

Bean Market News

1995 Summary

USDA Agricultural Marketing Service

711 'O' Street

Greeley, Colorado USA 80631

Phone 970-353-9750

Fax 970-353-9790

Released May 1996



USDA - AMS LIVESTOCK AND GRAIN MARKET NEWS

711 "O" Street
Greeley Colorado USDA 80631
Telephone: 970-353-9760 Fax: 970-353-9790

TABLE OF CONTENTS

	Page
Dealer Price Trends - Graphs	
Pinto - Northern Colorado	1
Pinto - North Dakota/Minnesota	2
Pea Bean - Michigan	3
Great Northern - Western Nebraska/Eastern Wyoming	4
*Monthly Average Prices - By Crop Year - FOB Dealer	
Pinto, Great Northern, Small Red, Pink	5
Black, Cranberry, Light Red Kidney	7
Small White, Pea Bean, Dark Red Kidney	9
Light Red Kidney, Baby Lima, Blackeye, Pink, Garbanzo (California)	13
*Monthly Average Prices - By Crop Year - FOB Grower	
Pinto, Great Northern, Small Red, Pink	6
Black, Cranberry, Light Red Kidney	8
Small White, Pea Bean, Dark Red Kidney	10
*Monthly Average Prices Peas & Lentils- By Crop Year - FOB Dealer and Grower	11-12
Dry Edible Beans, Production by Commercial Class and Canada Crop Production	14
Dry Edible Beans - Production by Commercial Class	15-16
Dry Pea and Lentil Production - USADPLC	17
Dry Pea and Lentil Production - USDA, NASS	18
Dry Beans, U.S. Exports by Country of Destination	19-21
Dried Peas, U.S. Exports by Country of Destination	22-24
USDA/CCC Purchases of Dry Edible Beans, Peas & Lentils	24
USDA/ F&V Purchases for Domestic Feeding Programs	25
U.S. Exports, Dry Beans and Dry Ripe Peas	26
U.S. Exports Shelled Beans Other Than Canned Dried, Beans Other Than Shelled, and Shelled Canned Dry Beans	27-28
World Pulse, Dry Bean, Garbanzo and Pea Production	29-32
Canadian Exports/Imports	33-35

**Average monthly prices are assembled by selected areas to give an indication of market trends rather than to provide a complete history of each area reported weekly. Average prices are numerical averages and are not weighted to reflect sales volume.*

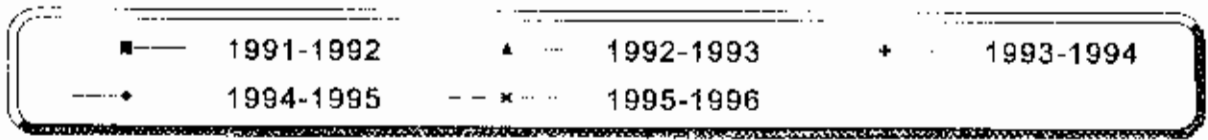
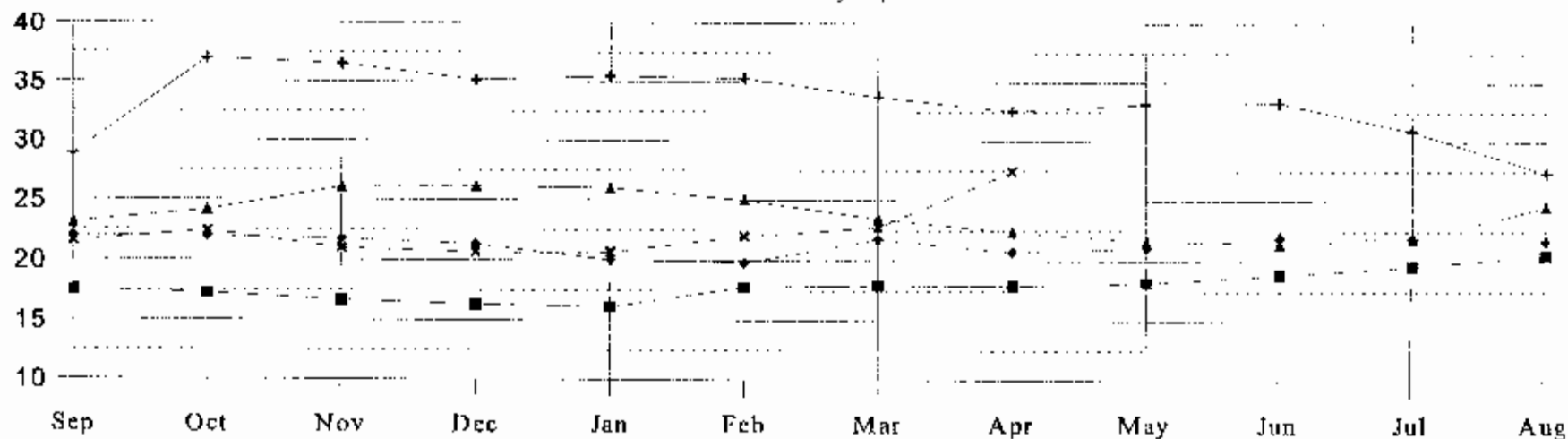
Monthly Average Prices Per Cwt. by Crop Year fob Dealer

PINTO - Northern Colorado

Year	Sep	Oct	Nov	Dec	Jan	Feb	Mar	Apr	May	Jun	Jul	Aug	Avg
1991-1992	17.50	17.25	16.69	16.33	16.13	17.81	17.93	17.94	18.22	18.88	19.63	20.56	17.91
1992-1993	23.10	24.13	26.06	26.13	26.00	25.00	23.45	22.38	21.63	21.45	21.88	24.55	23.81
1993-1994	28.81	37.00	36.50	35.17	35.50	35.31	33.75	32.56	33.19	33.30	30.88	27.35	33.28
1994-1995	22.00	21.94	21.75	21.33	20.05	19.81	21.75	20.75	21.10	21.94	21.88	21.70	21.33
1995-1996	21.56	22.40	21.00	20.67	20.70	22.00	22.75	27.45					

PINTO - Northern Colorado

Dealer Prices Per Cwt by Crop Year



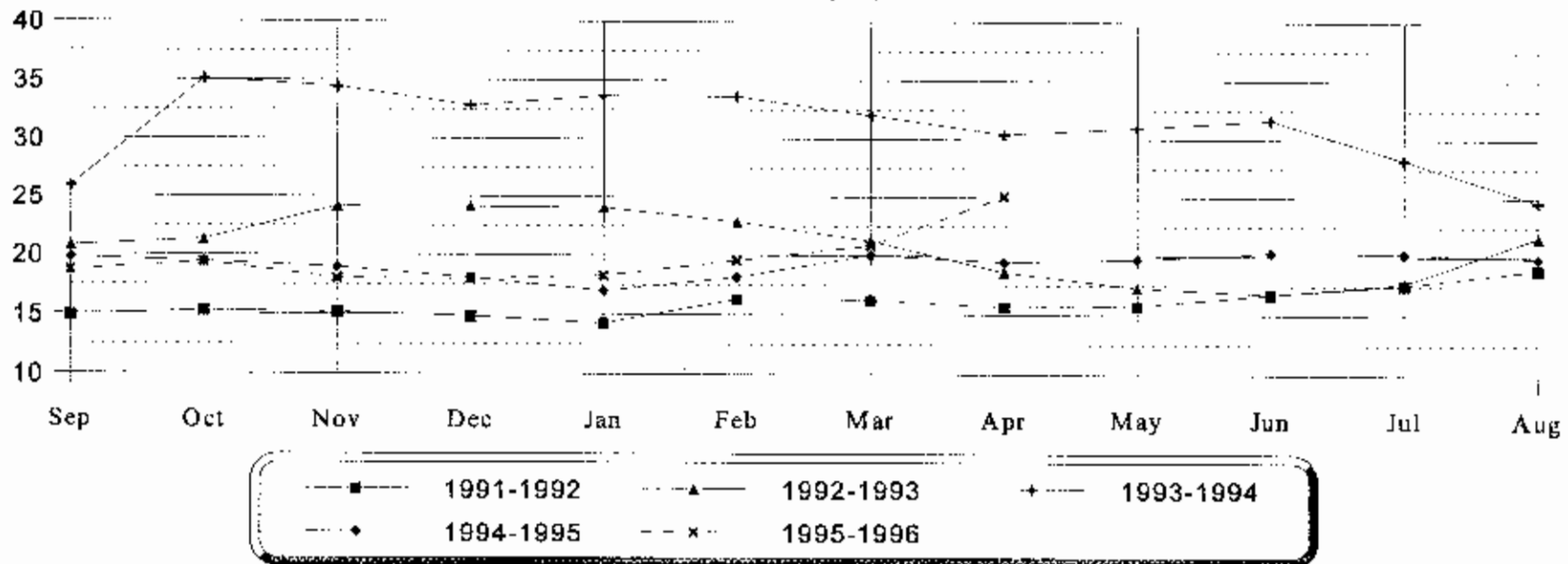
Monthly Average Prices Per Cwt. by Crop Year fob Dealer

PINTO - North Dakota/Minnesota

Year	Sep	Oct	Nov	Dec	Jan	Feb	Mar	Apr	May	Jun	Jul	Aug	Avg
1991-1992	14.88	15.30	15.16	14.83	14.25	16.31	16.23	15.69	15.78	16.78	17.59	18.91	15.98
1992-1993	20.75	21.31	24.16	24.13	24.06	22.88	21.25	18.63	17.31	16.80	17.75	21.65	20.89
1993-1994	25.88	35.13	34.45	32.83	33.69	33.63	32.06	30.44	31.00	31.68	28.25	24.65	31.14
1994-1995	19.75	19.44	19.00	18.08	17.00	18.19	20.05	19.47	19.73	20.31	20.25	19.85	19.26
1995-1996	18.66	19.43	18.06	18.00	18.30	19.59	20.88	25.10					

PINTO - North Dakota/Minnesota

Dealer Prices Per Cwt by Crop Year



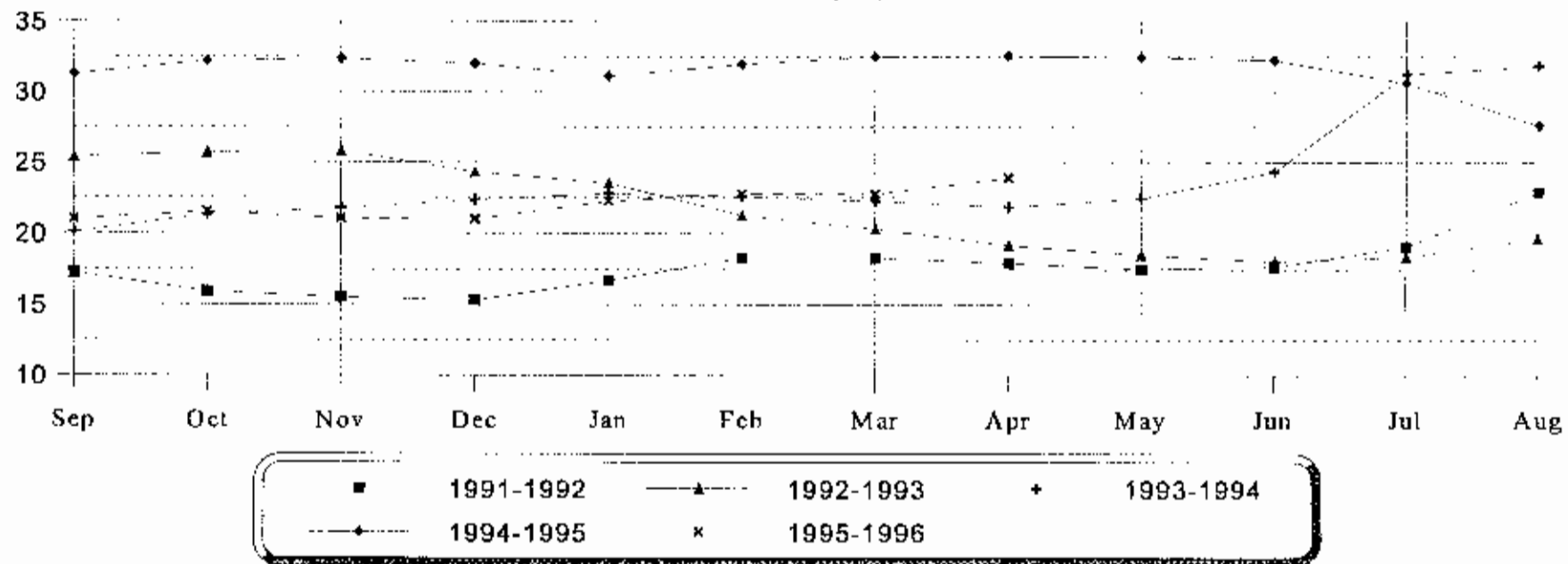
Monthly Average Prices Per Cwt. by Crop Year fob Dealer

PEA BEAN - Michigan No. 1's

Year	Sep	Oct	Nov	Dec	Jan	Feb	Mar	Apr	May	Jun	Jul	Aug	Avg
1991-1992	17.25	15.93	15.53	15.33	16.72	18.31	18.30	17.94	17.53	17.70	19.08	22.88	17.71
1992-1993	25.38	25.67	25.81	24.31	23.50	21.25	20.33	19.19	18.53	18.05	18.38	19.68	21.67
1993-1994	20.06	21.31	21.75	22.33	22.78	22.56	22.25	21.84	22.44	24.33	31.25	31.85	23.73
1994-1995	31.25	32.19	32.35	32.00	31.10	31.94	32.50	32.56	32.45	32.25	30.63	27.60	31.45
1995-1996	21.00	21.50	21.06	21.00	22.25	22.75	22.75	23.90					

PEA BEAN - Michigan No. 1's

Dealer Prices Per Cwt by Crop Year



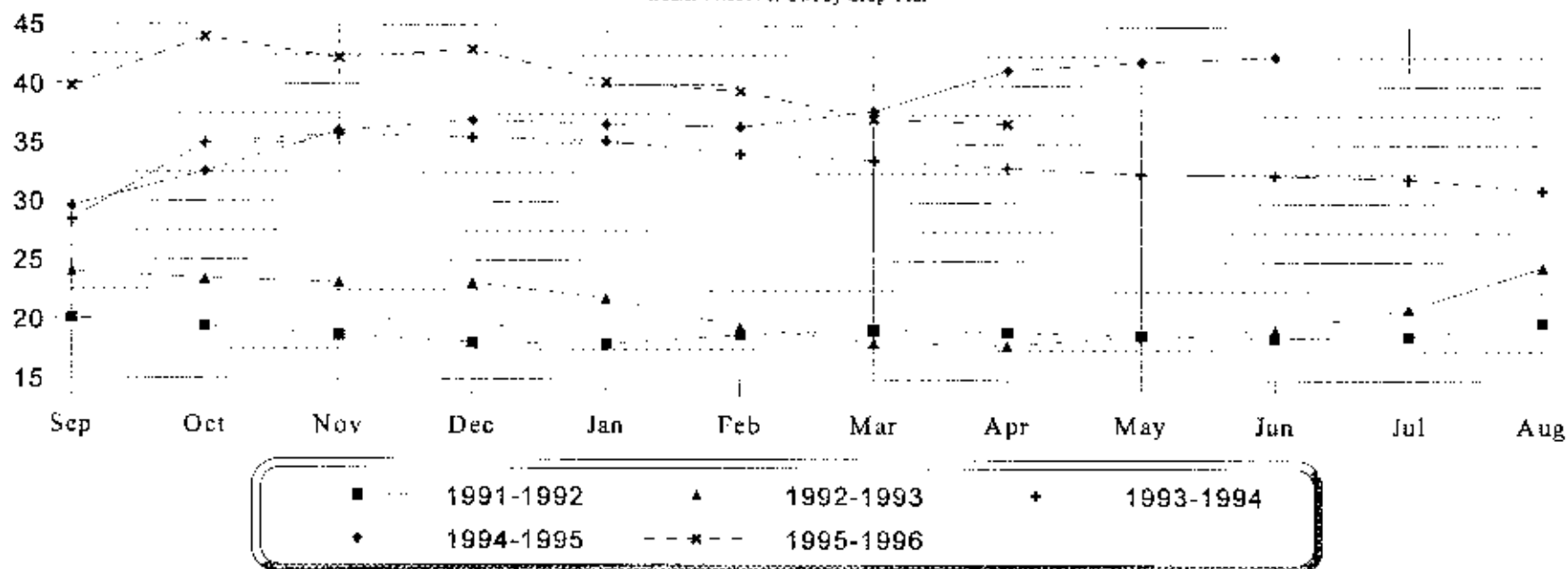
Monthly Average Prices Per Cwt. by Crop Year fob Dealer
GREAT NORTHERN - Western Nebraska/Eastern Wyoming

Year	Sep	Oct	Nov	Dec	Jan	Feb	Mar	Apr	May	Jun	Jul	Aug	Avg
1991-1992	20.13	19.40	18.72	18.08	17.97	18.75	19.20	19.00	18.75	18.55	18.69	19.91	18.93
1992-1993	24.00	23.44	23.13	23.13	21.88	19.38	18.10	17.88	18.69	19.25	21.06	24.63	21.21
1993-1994	28.42	35.00	35.75	35.50	35.25	34.13	33.60	33.00	32.50	32.40	32.13	31.20	33.24
1994-1995	29.56	32.56	36.05	37.00	36.65	36.44	37.78	41.31	42.05	42.50	NE	NE	37.19
1995-1996	39.81	44.00	42.25	43.00	40.25	39.50	37.13	36.75					

NE - Not Established

GREAT NORTHERN - Western Nebraska - Eastern Wyoming

Dealer Prices Per Cwt by Crop Year



Monthly Average Prices Per Cwt. by Crop Year fob Dealer

Year	Sep	Oct	Nov	Dec	Jan	Feb	Mar	Apr	May	June	Jul	Aug	Avg
PINTO - Northern Colorado													
1991-1992	17.50	17.25	16.69	16.33	16.13	17.81	17.93	17.94	18.22	18.88	19.63	20.56	17.91
1992-1993	23.10	24.13	26.06	26.13	26.00	25.00	23.45	22.38	21.63	21.45	21.88	24.55	23.81
1993-1994	28.81	37.00	36.50	35.17	35.50	35.31	33.75	32.56	33.19	33.30	30.88	27.35	33.28
1994-1995	22.00	21.94	21.75	21.33	20.05	19.81	21.75	20.75	21.10	21.94	21.88	21.70	21.33
1995-1996	21.56	22.40	21.00	20.67	20.70	22.00	22.75	27.45					
PINTO - North Dakota/Minnesota													
1991-1992	14.88	15.30	15.16	14.83	14.25	16.31	16.23	15.69	15.78	16.78	17.59	18.91	15.98
1992-1993	20.75	21.31	24.16	24.25	24.06	22.88	21.25	18.63	17.31	16.80	17.75	21.65	20.90
1993-1994	25.88	35.13	34.45	32.83	33.69	33.63	32.06	30.44	31.00	31.68	28.25	24.65	31.14
1994-1995	19.75	19.44	19.00	18.08	17.00	18.19	20.05	19.47	19.73	20.31	20.25	19.85	19.26
1995-1996	18.66	19.43	18.06	18.00	18.30	19.59	20.88	25.10					
PINTO - Idaho													
1991-1992	18.00	18.25	17.41	17.08	16.75	18.08	18.90	19.31	19.58	19.88	20.33	21.44	18.75
1992-1993	24.00	25.42	26.50	26.50	26.44	25.50	24.08	22.56	21.75	21.60	22.19	24.85	24.28
1993-1994	27.75	36.69	36.88	35.67	35.75	35.50	34.13	33.00	34.06	34.33	31.56	27.40	33.56
1994-1995	22.69	23.00	22.55	21.83	20.95	20.81	22.25	21.63	21.95	22.31	22.63	22.60	22.10
1995-1996	21.69	22.90	22.25	21.83	21.75	22.63	23.25	27.45					
GREAT NORTHERN - Western Nebraska/Eastern Wyoming													
1991-1992	20.13	19.40	18.72	18.08	17.97	18.75	19.20	19.00	18.75	18.55	18.69	19.91	18.93
1992-1993	22.80	23.44	23.13	23.13	21.88	19.38	18.10	17.88	18.69	19.25	21.06	24.63	21.11
1993-1994	28.42	35.00	35.75	35.50	35.25	34.13	33.60	33.00	32.50	32.40	32.13	31.20	33.24
1994-1995	29.56	32.56	36.05	37.00	36.65	36.44	37.78	41.31	42.05	42.50	N.E.	N.E.	37.19
1995-1996	39.81	44.00	42.25	43.00	40.25	39.50	37.13	36.75					
SMALL RED - Southern Idaho													
1991-1992	25.58	25.00	21.88	21.92	21.38	24.25	24.85	26.50	28.92	28.95	29.28	28.88	25.62
1992-1993	29.83	30.75	31.13	30.50	30.50	30.06	29.15	28.38	27.88	29.94	30.67	31.50	30.02
1993-1994	29.50	31.13	31.42	31.17	30.63	30.50	29.20	28.13	27.25	27.25	27.69	28.10	29.33
1994-1995	28.83	29.00	29.40	29.17	28.85	28.25	27.63	27.75	27.50	27.44	27.25	27.20	28.19
1995-1996	26.94	26.55	26.63	26.50	27.00	26.75	26.44	28.25					
PINK - Southern Idaho													
1991-1992	20.56	20.90	20.56	20.33	19.56	20.06	20.15	20.50	20.63	20.63	21.00	21.75	20.55
1992-1993	22.75	28.58	29.56	29.50	29.25	28.25	27.65	26.38	25.38	24.85	24.50	25.40	26.84
1993-1994	26.83	30.17	31.30	31.00	30.42	30.00	28.05	27.06	26.94	27.10	26.69	26.81	28.53
1994-1995	26.25	26.50	26.65	26.33	26.50	26.19	26.00	26.00	26.20	26.33	25.75	26.00	26.23
1995-1996	24.88	25.80	25.75	25.75	25.95	25.88	25.88	28.20					

NE - Not Established

Monthly Average Prices Per Cwt. by Crop Year fob Bid to Growers

Year	Sep	Oct	Nov	Dec	Jan	Feb	Mar	Apr	May	June	Jul	Aug	Avg
PINTO - Northern Colorado													
1991-1992	13.69	13.10	12.56	12.25	11.50	13.25	13.50	13.75	14.00	14.30	15.06	15.88	13.57
1992-1993	18.30	19.00	20.00	20.00	20.00	19.88	18.60	17.75	17.00	17.00	17.00	19.50	18.67
1993-1994	22.75	29.00	29.50	29.00	29.63	30.00	28.20	28.00	28.13	27.75	23.00	20.70	27.14
1994-1995	16.38	17.00	17.00	16.00	15.10	15.00	15.75	16.00	16.60	17.00	16.75	15.90	16.21
1995-1996	16.25	16.60	15.00	15.00	15.20	16.50	18.00	21.80					
PINTO - North Dakota/Minnesota													
1991-1992	11.13	11.35	11.06	10.42	10.19	11.38	12.00	12.00	12.00	12.30	13.13	14.44	11.78
1992-1993	16.70	17.13	18.88	19.25	19.25	18.00	16.80	15.47	14.00	13.60	13.50	13.75	16.36
1993-1994	21.00	28.25	28.00	27.00	27.75	29.00	27.00	N.Q.	27.75	27.25	21.00	19.40	25.76
1994-1995	15.38	15.38	15.05	13.83	13.30	14.31	15.50	15.63	15.90	16.00	15.88	15.80	15.16
1995-1996	14.13	15.10	14.00	14.00	14.10	15.38	16.44	20.00					
PINTO - Idaho													
1991-1992	13.50	13.40	13.00	13.00	12.13	13.38	14.10	14.88	15.00	15.00	15.06	16.25	14.06
1992-1993	19.40	20.25	20.00	20.13	21.00	19.88	18.80	18.00	17.13	16.90	16.63	18.70	18.90
1993-1994	21.75	28.50	29.30	29.00	29.50	30.00	28.00	28.00	28.00	28.25	22.00	21.20	26.96
1994-1995	18.00	18.00	18.00	17.00	16.00	16.00	16.88	16.88	17.00	17.50	18.00	18.00	17.27
1995-1996	17.13	17.00	16.50	16.00	16.20	17.50	18.50	22.00					
GREAT NORTHERN - Western Nebraska/Eastern Wyoming													
1991-1992	14.88	13.95	13.38	13.08	12.50	13.38	13.90	13.94	14.00	14.00	14.00	14.00	13.75
1992-1993	16.40	18.00	18.00	18.00	17.50	15.75	13.70	13.50	13.50	13.65	14.44	15.80	15.69
1993-1994	18.50	20.50	22.00	22.00	22.63	23.00	23.00	23.00	23.00	23.00	23.25	22.60	22.21
1994-1995	20.88	23.00	25.80	26.83	27.00	27.00	27.25	30.00	30.00	30.00	30.00	30.00	27.31
1995-1996	27.75	30.00	29.00	29.00	29.00	29.00	26.00	25.70					
SMALL RED - Southern Idaho													
1991-1992	19.00	18.50	15.00	15.00	15.00	15.50	16.40	18.00	19.25	20.00	20.25	21.00	17.74
1992-1993	22.20	23.00	23.00	23.00	23.00	22.25	22.00	22.00	22.00	22.00	22.25	23.00	22.48
1993-1994	22.13	22.75	23.00	23.00	23.00	23.00	21.50	21.25	21.00	21.00	20.88	21.00	21.96
1994-1995	21.00	21.38	22.00	22.00	21.80	21.50	21.63	21.50	21.20	21.00	21.50	21.50	21.50
1995-1996	19.63	19.90	19.75	19.50	19.40	19.38	19.75	20.30					
PINK - Southern Idaho													
1991-1992	15.25	15.40	15.00	14.33	13.25	13.63	14.00	15.00	15.63	16.00	16.00	16.25	14.98
1992-1993	19.50	22.50	23.00	22.00	23.00	21.50	20.70	19.75	18.50	17.80	16.75	18.30	20.28
1993-1994	19.75	22.00	22.00	22.17	22.25	21.88	19.00	19.00	19.00	19.00	19.00	19.00	20.34
1994-1995	19.00	19.00	19.00	18.17	18.00	18.00	18.00	18.13	18.20	18.00	18.00	18.00	18.29
1995-1996	18.00	18.00	18.00	18.00	18.00	18.38	18.75	20.10					

NQ - No Quote

Monthly Average Prices Per Cwt. by Crop Year fob Dealer

Year	Sep	Oct	Nov	Dec	Jan	Feb	Mar	Apr	May	June	Jul	Aug	Avg
BLACK - Michigan													
1991-1992	20.08	19.28	19.16	19.00	18.56	21.00	21.20	20.53	N.A.	19.81	19.81	20.41	19.89
1992-1993	22.55	23.81	25.06	24.75	25.25	24.88	24.00	22.75	22.44	23.44	24.50	27.66	24.26
1993-1994	22.25	24.24	27.45	27.00	26.33	25.00	24.60	25.31	31.75	33.28	34.13	34.25	27.97
1994-1995	27.31	33.25	34.03	33.75	33.70	33.97	34.25	33.50	33.10	32.88	32.00	29.30	32.59
1995-1996	20.25	20.20	19.19	19.00	18.55	19.00	20.13	22.45					
BLACK - New York													
1991-1992	N.A.	N.A.	20.50	N.A.	N.A.	N.A.	20.50	N.A.	21.25	21.19	N.A.	N.A.	20.86
1992-1993	22.63	24.00	26.00	25.50	25.50	25.67	24.67	24.00	24.00	N.A.	24.25	26.67	24.81
1993-1994	22.08	24.63	26.70	26.50	26.00	24.63	25.25	25.00	30.75	33.00	34.50	N.A.	27.19
1994-1995	27.75	32.00	33.15	33.58	32.80	32.75	33.69	33.13	32.90	33.00	32.50	30.20	32.29
1995-1996	20.88	20.65	20.50	20.50	19.70	20.00	20.25	22.65					
CRANBERRY - Michigan													
1991-1992	25.31	24.55	28.69	29.42	31.75	32.25	31.13	N.A.	N.A.	N.A.	N.A.	N.A.	29.01
1992-1993	37.50	41.08	50.41	52.25	51.50	N.A.	N.A.	31.75	32.50	N.A.	32.67	29.75	39.93
1993-1994	29.04	32.81	30.95	30.63	28.50	27.42	25.75	25.92	27.44	31.50	35.00	34.83	29.98
1994-1995	35.38	34.44	34.48	34.83	34.75	34.69	34.50	34.38	34.40	34.50	34.50	34.50	34.61
1995-1996	30.00	29.50	29.81	29.92	29.88	29.56	29.38	29.50					
LIGHT RED KIDNEY - Michigan													
1991-1992	30.63	30.90	31.38	31.17	30.75	30.13	30.00	29.50	N.A.	N.A.	24.50	N.A.	29.88
1992-1993	35.50	37.13	37.81	37.88	37.17	37.38	36.13	35.17	33.75	32.25	31.25	30.94	35.20
1993-1994	28.33	30.25	31.20	31.00	31.50	30.83	31.05	30.50	30.83	30.63	30.75	30.00	30.57
1994-1995	29.50	28.84	28.80	28.92	28.50	28.94	29.06	29.00	28.40	28.50	28.00	28.80	28.77
1995-1996	27.63	27.70	27.88	27.33	27.00	27.00	27.19	27.50					
LIGHT RED KIDNEY - New York													
1991-1992	30.50	30.50	30.63	30.42	29.75	29.17	28.53	28.50	N.A.	25.88	24.83	N.A.	28.87
1992-1993	29.00	36.83	37.88	38.06	36.88	36.67	N.A.	N.A.	33.50	N.A.	31.33	30.00	34.46
1993-1994	28.17	29.88	30.60	30.50	31.00	30.33	30.50	30.25	29.25	28.25	N.A.	N.A.	29.87
1994-1995	28.00	28.17	27.40	27.75	27.75	27.31	27.00	27.00	27.00	27.13	27.25	28.00	27.48
1995-1996	27.50	27.50	27.38	27.46	27.50	27.06	26.25	27.15					
LIGHT RED KIDNEY - Colorado													
1991-1992	31.38	31.35	31.19	31.83	31.75	32.00	31.50	30.83	N.E.	N.E.	N.E.	N.E.	31.48
1992-1993	36.88	37.44	37.94	38.25	38.50	37.69	35.50	35.13	34.17	33.67	34.00	33.83	36.08
1993-1994	30.17	33.17	34.00	33.50	34.50	34.50	34.10	34.00	34.06	34.25	34.18	31.81	33.52
1994-1995	29.88	30.44	29.80	29.75	29.20	29.50	29.25	28.63	28.95	28.50	28.75	29.00	29.30
1995-1996	28.38	28.95	28.75	28.92	28.55	28.13	27.75	29.35					

NA - Not Available

NE - Not Established

Monthly Average Prices Per Cwt. by Crop Year fob Bid to Growers

Year	Sep	Oct	Nov	Dec	Jan	Feb	Mar	Apr	May	June	Jul	Aug	Avg
BLACK - Michigan													
1991-1992	15.00	14.50	14.31	14.08	13.81	15.19	15.50	16.00	B.I.	B.I.	B.I.	B.I.	14.80
1992-1993	17.55	20.00	20.13	20.25	20.50	20.50	19.90	19.50	18.56	18.35	18.50	18.50	19.35
1993-1994	16.25	18.75	21.50	22.00	22.00	21.75	21.00	21.13	23.50	24.00	24.00	N.A.	21.44
1994-1995	22.00	29.13	29.30	29.50	29.80	30.00	30.00	30.00	30.00	30.00	29.50	29.00	29.02
1995-1996	15.38	15.30	14.63	13.83	13.40	13.88	14.00	15.70					
BLACK - New York													
1991-1992	15.00	15.00	15.00	15.00	14.88	14.88	15.30	16.00	15.75	15.70	16.00	16.25	15.40
1992-1993	17.56	17.75	18.00	18.00	18.00	18.00	18.00	18.00	18.00	18.00	18.75	19.13	18.10
1993-1994	15.25	16.00	17.00	18.00	18.00	17.50	17.00	17.00	18.50	19.67	N.A.	N.A.	17.39
1994-1995	18.88	21.63	22.50	23.00	23.80	24.50	24.00	24.00	24.50	24.00	24.00	24.00	23.23
1995-1996	16.00	15.80	15.13	15.00	14.10	14.00	14.00	15.10					
CRANBERRY - Michigan													
1991-1992	20.38	19.00	19.75	N.A.	N.A.	N.A.	N.A.	N.A.	N.A.	N.A.	N.A.	N.A.	19.71
1992-1993	28.67	N.A.	N.A.	N.A.	N.A.	N.A.	N.A.	N.A.	N.A.	N.A.	N.A.	N.A.	28.67
1993-1994	21.50	25.00	24.20	24.25	N.A.	22.00	N.A.	N.A.	22.83	N.A.	N.A.	N.A.	23.30
1994-1995	28.88	28.88	28.60	29.00	29.00	29.00	29.00	29.00	29.00	28.50	28.00	28.00	28.74
1995-1996	24.25	23.60	24.00	24.00	24.00	24.00	23.75	24.00					
LIGHT RED KIDNEY - Michigan													
1991-1992	24.50	24.90	25.00	25.00	25.00	25.00	25.00	24.88	24.50	B.I.	B.I.	B.I.	24.86
1992-1993	27.38	30.13	30.00	31.00	31.00	31.00	30.00	27.25	27.00	27.00	N.A.	N.A.	29.18
1993-1994	21.75	23.75	24.20	24.50	24.13	23.50	23.60	24.00	24.00	N.A.	N.A.	N.A.	23.71
1994-1995	23.88	23.75	23.40	23.50	23.50	23.50	23.25	23.00	23.40	23.63	22.50	22.30	23.30
1995-1996	22.26	22.60	22.38	22.00	21.70	21.50	21.50	22.10					
LIGHT RED KIDNEY - New York													
1991-1992	24.83	25.00	25.00	23.00	21.00	21.00	21.00	18.75	18.50	18.10	18.00	18.50	21.06
1992-1993	22.20	26.25	28.50	29.00	29.00	29.00	29.00	29.00	29.00	28.20	28.00	N.A.	22.20
1993-1994	20.25	21.00	21.00	21.00	21.00	21.00	21.00	21.00	21.00	21.00	N.A.	N.A.	20.93
1994-1995	21.13	19.50	18.20	18.00	18.00	18.25	18.00	18.00	18.00	18.00	22.00	22.00	19.09
1995-1996	20.50	20.50	20.25	20.00	19.70	19.00	19.00	19.40					
LIGHT RED KIDNEY - Colorado													
1991-1992	24.75	25.00	25.00	25.00	25.00	25.00	25.00	25.00	25.00	25.00	25.00	25.00	24.98
1992-1993	27.55	30.25	30.00	30.00	30.00	30.06	30.00	30.00	30.00	B.I.	B.I.	B.I.	29.73
1993-1994	23.17	24.13	25.50	26.00	26.00	26.00	26.00	26.00	26.00	26.00	B.I.	B.I.	25.48
1994-1995	24.00	23.13	23.00	23.00	23.00	23.38	22.63	22.50	21.70	21.50	21.63	22.00	22.62
1995-1996	22.63	22.80	22.00	21.33	20.00	20.38	20.50	23.05					

NA - Not Available BI - Bought In

Monthly Average Prices Per Cwt. by Crop Year fob Dealer

Year	Sep	Oct	Nov	Dec	Jan	Feb	Mar	Apr	May	June	Jul	Aug	Avg
SMALL WHITE - Idaho/Washington													
1991-1992	25.03	24.13	23.75	23.00	22.17	22.17	22.45	22.33	22.13	23.75	25.08	27.75	23.73
1992-1993	29.67	33.00	31.83	31.00	31.00	30.00	28.25	N.E.	N.E.	N.E.	24.50	25.38	29.40
1993-1994	26.00	29.50	29.06	29.33	29.31	29.00	28.75	27.00	25.50	27.00	31.42	32.75	28.72
1994-1995	32.75	33.19	34.44	34.50	34.80	35.38	35.13	34.92	35.00	35.13	34.38	33.00	34.39
1995-1996	28.00	NE	28.00	28.00	29.00	N.E.	N.E.	N.E.					
PEA BEAN - Michigan No. 1's													
1991-1992	17.25	15.93	15.53	15.33	16.72	18.31	18.30	17.94	17.53	17.70	19.08	22.88	17.71
1992-1993	25.38	25.67	25.81	24.31	23.50	21.25	20.33	19.19	18.53	18.05	18.38	19.68	21.67
1993-1994	20.06	21.31	21.75	22.33	22.78	22.56	22.25	21.84	22.44	24.33	31.28	31.85	23.73
1994-1995	31.25	32.19	32.35	32.00	31.10	31.94	32.50	32.56	32.45	32.25	30.63	27.60	31.45
1995-1996	21.00	21.50	21.05	21.00	22.25	22.75	22.75	23.90					
PEA BEAN - North Dakota/Minnesota													
1991-1992	15.50	15.10	14.97	N.E.	N.E.	16.75	16.75	16.06	15.83	16.56	N.E.	N.E.	15.94
1992-1993	23.00	23.75	24.17	23.50	21.50	19.50	18.83	17.50	16.81	16.96	17.00	19.25	20.15
1993-1994	18.25	20.13	20.38	20.75	21.63	21.94	21.00	21.31	20.04	22.67	27.25	N.E.	21.40
1994-1995	30.25	31.25	31.15	30.92	30.30	30.56	31.13	31.19	31.60	31.50	29.75	28.50	30.68
1995-1996	19.88	19.85	19.09	18.33	20.70	21.44	21.63	23.10					
DARK RED KIDNEY - Michigan													
1991-1992	29.67	26.44	25.00	24.08	23.13	21.75	21.90	23.50	23.50	30.88	32.50	35.00	26.45
1992-1993	37.50	41.50	42.50	42.00	41.63	41.13	39.75	39.81	38.75	37.00	34.19	35.58	39.28
1993-1994	36.33	38.94	39.55	38.26	37.75	36.63	35.84	34.94	33.75	33.65	32.81	30.67	35.76
1994-1995	25.81	26.47	26.95	26.67	25.60	25.56	25.88	25.63	26.65	27.75	29.38	30.63	26.92
1995-1996	30.81	32.00	32.00	31.50	30.80	30.00	30.13	31.05					
DARK RED KIDNEY - Minnesota/Wisconsin													
1991-1992	29.50	25.50	24.81	24.08	22.88	23.75	24.83	23.50	N.E.	35.63	N.E.	N.E.	26.05
1992-1993	38.63	41.25	42.00	42.00	41.62	41.58	38.75	38.00	37.25	36.75	N.E.	35.94	39.43
1993-1994	36.25	40.25	40.25	38.17	38.00	37.17	35.96	33.63	33.50	33.45	32.44	27.33	35.53
1994-1995	25.81	26.34	26.60	26.08	26.00	26.00	26.06	27.00	28.00	29.25	29.75	30.75	27.30
1995-1996	31.00	33.50	32.75	32.25	32.25	32.00	N.E.	N.E.					

NE - Not Established

Monthly Average Prices Per Cwt. by Crop Year fob Grower

Year	Sep	Oct	Nov	Dec	Jan	Feb	Mar	Apr	May	June	Jul	Aug	Avg
SMALL WHITE - Idaho/Washington													
1991-1992	19.50	18.90	19.13	18.00	15.50	15.63	16.00	16.00	16.00	16.20	17.63	21.25	17.48
1992-1993	24.80	26.00	26.00	25.00	24.00	22.50	28.25	20.00	19.00	18.00	17.63	18.00	22.43
1993-1994	20.38	21.25	21.10	21.00	21.00	21.00	21.50	21.13	21.00	21.00	23.50	25.50	21.61
1994-1995	27.00	27.25	26.45	26.50	26.50	26.50	26.50	27.63	26.80	28.38	26.63	24.75	26.74
1995-1996	23.00	23.00	23.00	23.00	23.10	23.25	23.50	24.20					
PEA BEAN - Michigan No. 1's													
1991-1992	14.06	12.50	11.75	11.67	12.25	13.63	14.25	14.38	14.00	14.40	15.44	19.56	13.99
1992-1993	22.00	21.75	21.63	21.25	20.00	17.50	16.60	15.66	15.13	14.70	14.63	14.95	17.98
1993-1994	15.75	16.44	17.35	18.17	18.75	18.44	18.30	18.50	18.63	19.80	25.38	27.60	19.43
1994-1995	27.56	29.50	29.65	29.83	29.15	28.25	29.00	29.25	29.25	29.13	27.38	23.30	28.44
1995-1996	16.69	16.55	17.00	17.00	17.80	17.75	18.00	18.80					
PEA BEAN - North Dakota/Minnesota													
1991-1992	11.38	11.25	10.75	10.33	10.25	11.56	12.00	12.00	11.50	11.55	12.06	14.00	11.55
1992-1993	18.80	18.38	18.88	18.88	17.88	15.50	15.00	13.56	13.25	13.05	12.75	13.10	15.76
1993-1994	14.50	15.06	16.40	16.50	16.81	17.00	17.00	17.00	17.25	18.10	N.E.	26.00	17.42
1994-1995	25.50	27.25	27.55	27.75	27.25	26.50	27.44	27.75	27.75	27.50	25.88	24.00	26.84
1995-1996	14.88	14.70	14.50	15.00	15.80	17.25	18.00	18.80					
DARK RED KIDNEY - Michigan													
1991-1992	23.25	21.40	18.50	17.50	17.25	14.25	15.00	15.00	B.I.	B.I.	B.I.	B.I.	17.77
1992-1993	31.67	33.75	33.13	33.00	32.00	31.00	31.00	B.I.	B.I.	B.I.	B.I.	B.I.	32.22
1993-1994	30.25	31.25	32.00	31.17	30.75	30.00	N.E.	28.67	N.E.	27.63	N.E.	N.E.	30.22
1994-1995	20.75	21.13	20.80	20.50	19.70	19.00	18.50	18.88	19.50	19.75	20.63	22.00	20.10
1995-1996	25.13	26.10	26.25	25.50	25.00	25.00	25.00	25.00					
DARK RED KIDNEY - Minnesota/Wisconsin													
1991-1992	24.00	20.33	18.50	17.50	17.25	16.50	N.E.	N.E.	B.I.	B.I.	B.I.	B.I.	19.01
1992-1993	31.67	33.75	34.00	34.88	34.88	34.50	N.E.	N.E.	N.E.	N.E.	N.E.	N.E.	33.95
1993-1994	31.00	33.12	34.30	34.00	31.50	30.00	W	W	28.00	27.75	N.E.	N.E.	31.21
1994-1995	20.50	19.88	19.50	19.50	19.40	19.19	19.19	18.88	19.40	21.38	22.00	22.50	20.11
1995-1996	26.56	27.85	26.88	26.50	26.25	26.38	26.44	26.60					

W - Windrowed NE - Not Established B.I. - Bought In

Monthly Average Prices Per Cwt. by Crop Year fob Dealer

Year	Sep	Oct	Nov	Dec	Jan	Feb	Mar	Apr	May	June	Jul	Aug	Avg
AUSTRIAN WINTER PEA - Idaho/Washington													
1991-1992	22.60	22.06	21.08	20.33	19.84	19.44	19.25	18.50	N.E.	16.25	14.63	14.17	18.92
1992-1993	14.25	14.25	14.13	14.25	14.50	13.42	12.98	12.63	12.63	11.75	11.75	11.40	13.16
1993-1994	11.50	11.25	11.33	11.33	11.13	11.38	N.E.	N.E.	N.E.	13.25	N.E.	17.50	12.33
1994-1995	16.75	16.13	16.00	16.08	16.00	16.21	N.E.	16.29	16.13	16.22	16.25	16.25	16.21
1995-1996	16.28	16.25	16.13	16.25	16.25	16.25	16.28	16.25					
LENTIL - Idaho/Washington													
1991-1992	19.25	18.28	18.14	18.94	18.41	18.38	18.88	18.25	17.58	18.00	20.75	19.25	18.68
1992-1993	23.97	24.19	25.13	25.23	25.00	22.29	19.65	18.06	18.81	19.25	19.69	18.65	21.66
1993-1994	20.81	20.00	20.58	20.25	18.68	18.92	18.88	17.50	17.15	16.78	16.31	16.73	18.55
1994-1995	16.16	16.73	16.31	16.38	16.60	16.28	16.28	16.53	16.70	16.70	18.88	19.97	16.96
1995-1996	19.66	18.78	18.88	18.67	18.60	18.41	18.25	18.35					
GREEN SPLIT - Idaho/Washington													
1991-1992	13.58	13.31	13.16	13.29	13.11	13.19	13.23	13.13	13.03	13.45	13.50	13.33	13.28
1992-1993	13.91	14.53	14.90	14.75	14.66	14.44	14.28	14.06	14.19	14.20	14.03	13.55	14.29
1993-1994	13.34	13.06	12.78	12.67	12.48	12.28	12.38	12.31	12.48	12.59	12.81	13.16	12.70
1994-1995	13.31	14.53	16.38	17.04	18.40	19.50	20.44	20.63	20.60	20.56	18.13	15.06	17.88
1995-1996	15.06	14.85	14.81	14.67	14.28	14.44	14.91	15.20					
WHOLE GREEN PEA - Idaho/Washington													
1991-1992	10.77	10.50	10.22	10.38	10.28	10.44	10.50	10.38	10.19	10.43	10.75	10.63	10.46
1992-1993	11.13	11.84	12.13	11.71	11.64	11.54	11.30	11.21	11.28	11.33	11.06	10.29	11.37
1993-1994	10.02	9.75	9.50	9.54	9.25	9.22	9.31	9.35	9.63	10.09	10.38	10.80	9.74
1994-1995	10.92	12.05	13.53	14.54	15.53	16.63	17.31	17.63	17.80	17.23	15.30	12.41	15.07
1995-1996	12.16	11.78	11.66	11.42	11.35	11.72	12.41	12.58					
WHOLE YELLOW PEA - Idaho/Washington													
1991-1992	N.E.	10.69	10.06	N.E.	10.00	9.88	10.00	10.00	9.25	9.17	N.E.	N.E.	9.88
1992-1993	N.E.	10.50	11.08	N.E.	10.44	10.38	10.44	N.E.	10.16	N.E.	11.50	10.75	10.66
1993-1994	11.94	11.78	12.08	12.46	12.33	12.19	12.38	N.E.	9.25	11.56	11.25	11.10	11.67
1994-1995	10.88	12.10	13.03	13.50	13.50	13.31	13.31	13.56	14.25	14.59	12.75	12.69	13.12
1995-1996	12.47	12.50	12.69	12.58	12.50	13.41	12.75	12.75					
YELLOW SPLIT - Idaho/Washington													
1991-1992	13.63	13.31	13.06	13.00	13.00	12.94	13.08	13.04	12.71	13.06	13.13	13.00	13.08
1992-1993	13.34	13.66	13.88	13.88	13.84	13.75	13.50	13.50	13.63	13.78	14.38	14.25	13.78
1993-1994	15.19	15.31	15.43	16.50	15.48	15.47	15.47	15.13	15.08	14.91	14.66	14.33	15.16
1994-1995	14.25	14.70	15.94	15.96	16.15	15.94	16.31	16.38	16.90	17.31	16.66	15.69	16.02
1995-1996	15.56	15.75	15.75	15.75	15.55	15.44	15.59	15.75					

NE - Not Established

Monthly Average Prices Per Cwt. by Crop Year fob Bid to Grower

Year	Sep	Oct	Nov	Dec	Jan	Feb	Mar	Apr	May	June	Jul	Aug	Avg
AUSTRIAN WINTER PEA - Idaho/Washington													
1991-1992	16.25	16.25	N.E.	N.E.	N.E.	N.E.	N.E.	N.E.	N.E.	N.E.	10.13	10.50	13.28
1992-1993	10.31	10.56	10.65	10.67	10.38	N.E.	N.E.	N.E.	N.E.	N.E.	N.E.	8.65	10.20
1993-1994	8.81	8.69	8.73	8.75	8.75	8.97	9.75	10.00	10.00	10.00	10.00	10.40	9.40
1994-1995	12.00	12.00	12.00	12.00	12.00	12.00	12.00	12.00	12.00	12.00	12.20	12.25	12.04
1995-1996	12.13	12.10	12.25	12.08	12.00	12.00	12.00	12.00					
LENTIL - Idaho/Washington													
1991-1992	16.28	15.25	15.22	16.00	15.38	15.50	15.68	14.94	14.66	14.78	17.16	15.75	15.55
1992-1993	19.91	20.56	21.70	21.83	21.92	18.81	16.13	14.84	15.81	15.95	16.06	15.00	18.21
1993-1994	17.50	16.56	16.35	15.17	14.88	15.25	15.44	14.50	13.85	13.38	13.00	13.33	14.93
1994-1995	12.88	13.65	13.38	13.33	13.30	13.22	13.31	13.56	13.83	13.56	15.60	16.81	13.87
1995-1996	16.66	15.78	15.75	15.71	15.50	15.41	15.44	15.68					
WHOLE GREEN PEA - Idaho/Washington													
1991-1992	8.30	7.94	7.69	8.00	7.97	8.25	8.28	8.03	7.78	8.18	8.25	7.85	8.04
1992-1993	8.50	9.09	9.08	8.88	8.84	9.13	9.00	8.78	8.88	8.78	8.06	7.38	8.70
1993-1994	7.03	6.97	6.88	6.67	6.48	6.63	6.97	7.06	7.28	7.69	7.97	8.25	7.16
1994-1995	8.28	8.98	10.16	11.33	12.13	12.75	13.38	13.44	13.40	13.00	9.43	9.28	11.30
1995-1996	8.91	8.40	8.31	8.25	8.45	9.00	9.56	9.78					
WHOLE YELLOW PEA - Idaho/Washington													
1991-1992	7.71	7.50	7.28	7.38	7.22	7.38	7.43	7.28	7.16	7.13	7.25	7.20	7.33
1992-1993	7.56	7.75	7.70	7.75	7.69	7.63	7.48	7.25	7.28	7.43	7.78	7.90	7.60
1993-1994	8.47	8.66	8.73	8.75	8.73	8.75	8.63	8.50	8.30	8.25	8.13	8.10	8.50
1994-1995	8.25	8.85	9.56	9.88	9.75	9.66	9.63	9.66	9.85	9.63	9.48	9.59	9.48
1995-1996	9.22	8.78	8.91	8.75	8.58	8.81	9.00	9.23					

NE - Not Established

Monthly Average Prices Per Cwt. by Crop Year fob Dealer

Year	Sep	Oct	Nov	Dec	Jan	Feb	Mar	Apr	May	June	Jul	Aug	Avg
LIGHT RED KIDNEY - California													
1991-1992	29.44	31.40	31.50	31.92	32.88	32.67	32.00	31.88	30.75	29.10	29.31	30.13	31.08
1992-1993	31.38	36.94	36.38	37.00	36.56	35.63	34.79	33.63	32.81	32.55	31.88	31.88	34.29
1993-1994	32.25	N.A.	34.63	33.83	34.00	33.83	32.44	34.00	32.81	33.03	32.63	31.50	33.18
1994-1995	31.33	31.19	32.20	31.50	31.80	31.75	30.92	30.75	30.50	30.31	30.16	30.05	31.04
1995-1996	29.66	30.00	30.00	30.00	29.75	29.75	29.69	30.55					
BABY LIMA - California													
1991-1992	33.75	N.Q.	21.58	21.25	20.56	20.44	20.50	20.50	20.44	20.30	20.50	20.31	21.83
1992-1993	20.78	20.75	22.88	23.75	23.44	23.00	22.44	21.50	20.94	21.05	25.00	26.88	22.70
1993-1994	29.75	33.19	36.13	36.25	35.50	34.97	34.98	34.56	34.25	35.00	35.50	35.75	34.65
1994-1995	34.31	32.81	32.95	33.00	33.90	34.00	33.94	34.00	34.00	34.00	33.75	34.95	33.80
1995-1996	35.81	36.85	36.75	36.92	38.50	41.88	41.75	41.45					
LARGE LIMA - California													
1991-1992	45.25	44.35	43.50	43.33	42.81	41.69	37.75	39.13	37.00	33.35	30.69	28.34	38.93
1992-1993	26.25	26.13	26.25	26.33	26.38	35.63	25.22	25.50	25.31	25.75	29.56	31.50	26.65
1993-1994	32.50	42.38	45.33	45.08	44.75	43.69	43.10	41.31	41.06	40.88	41.25	41.10	41.87
1994-1995	41.38	43.38	43.95	44.25	44.80	44.75	44.63	44.75	45.05	45.25	46.16	47.50	44.65
1995-1996	47.94	48.35	49.19	49.58	49.80	49.75	49.75	49.78					
BLACKEYE - California													
1991-1992	29.63	29.15	27.19	26.00	23.88	22.50	21.75	21.00	20.38	22.70	19.56	20.38	23.68
1992-1993	21.20	22.63	26.69	26.67	26.50	26.25	26.28	26.19	26.19	26.00	26.75	28.19	25.80
1993-1994	32.75	35.25	36.81	37.67	44.50	44.50	45.25	46.92	47.31	48.45	50.50	N.A.	42.72
1994-1995	36.00	33.25	35.55	41.67	42.20	42.06	42.06	41.88	42.00	42.00	43.00	41.30	40.25
1995-1996	33.83	30.10	28.00	27.16	26.25	25.13	25.13	27.60					
PINK - California													
1991-1992	N.Q.	N.Q.	N.Q.	N.Q.	N.Q.	N.Q.	N.Q.	N.Q.	N.Q.	N.Q.	20.83	N.Q.	20.83
1992-1993	N.A.	N.A.	N.A.	N.A.	N.A.	N.A.	N.A.	26.25	26.25	25.63	25.21	N.A.	25.84
1993-1994	N.A.	N.A.	N.A.	31.00	N.A.	N.A.	N.A.	N.A.	27.88	30.00	30.00	N.A.	29.72
1994-1995	28.00	27.00	N.E.	28.00	27.33	N.A.	N.A.	N.A.	26.33	28.00	N.A.	N.A.	27.42
1995-1996	N.E.	N.E.	N.E.	26.00	26.75	25.50	N.E.	27.83					
GARBANZO - California													
1991-1992	36.63	37.40	38.50	38.67	37.63	38.25	39.90	40.00	40.13	44.19	43.81	42.81	39.86
1992-1993	40.94	42.67	42.50	41.25	41.00	44.50	43.93	37.50	40.13	N.A.	N.A.	N.A.	41.60
1993-1994	N.A.	N.A.	N.A.	N.A.	34.38	34.00	33.75	30.75	N.A.	N.A.	N.A.	29.31	32.44
1994-1995	32.09	41.50	44.25	45.00	45.00	44.63	42.50	42.75	43.25	N.A.	N.A.	N.A.	42.33
1995-1996	49.00	51.30	56.25	59.00	56.25	52.38	51.25	50.00					

NO - No Quote NE - Not Established NA - Not Available

Dry Edible Beans, U.S. Production by Commercial Class (1,000 Cwt.)

Class	1991	1992	1993	1994	1995*	5 Year Average
Pea Bean, (Navy)	8,268	5,018	5,283	5,291	7,319	6,236
Great Northern	2,588	1,416	858	1,645	2,176	1,737
Small White	353	166	131	164	163	195
Pinto	13,643	9,172	8,059	12,741	11,349	10,993
Red Kidney	2,323	1,964	2,049	2,808	2,255	2,280
Pink	822	609	791	815	664	940
Small Red	751	607	784	773	745	732
Cranberry	478	380	558	419	583	484
Black Turtle Soup	741	758	1,270	1,462	2,317	1,310
Large Lima (Calif.)	681	615	360	429	450	505
Baby Lima (Calif.)	975	498	351	609	535	594
Blackeye (Calif.)	984	577	622	842	1,121	829
Garbanzo (Calif.)	26	264	301	328	485	281
Other	1,132	571	506	702	870	756
Total	33,765	22,615	21,913	29,028	31,032	27,671

Source: USDA, NASS *Subject to revision.

Canadian Crop Production

PEA BEANS

PROVINCE	HARVESTED ACRES (1,000)				PRODUCTION (1,000)			
	1992	1993	1994	1995	1992	1993	1994	1995
Alberta								
Manitoba	25.0	15.0	20.0	35.0	250.0	95.0	350.0	520.0
Ontario	90.0	99.0	85.0	115.0	900.0	1600.0	1500.0	2000.0
Quebec	1.5	1.5	1.2	2.0	22.0	19.8	19.8	33.1
TOTAL	116.5	115.5	106.2	152.0	1172.0	1714.8	1869.8	2553.1

COLORED BEANS

PROVINCE	HARVESTED ACRES (1,000)				PRODUCTION (1,000)			
	1992	1993	1994	1995	1992	1993	1994	1995
Alberta	12.0	30.0	25.0	30.0	125.0	450.0	800.0	600.0
Manitoba	10.0	18.0	25.0	30.0	120.0	120.0	400.0	490.0
Ontario	14.0	30.0	35.0	35.0	110.0	500.0	600.0	600.0
Quebec	4.9	5.9	5.2	8.9	88.2	99.2	95.0	176.4
TOTAL	40.9	83.9	90.2	103.9	443.2	1169.2	1895.0	1866.4

DRY PEAS

PROVINCE	HARVESTED ACRES (1,000)				PRODUCTION (1,000)			
	1992	1993	1994	1995	1992	1993	1994	1995
Alberta	190	280	390	445	5550	11000	13750	15150
British Columbia				30				1000
Manitoba	120	150	200	180	4000	3150	6200	5400
Saskatchewan	330	725	1100	1300	9000	21500	33000	31900
TOTAL	640	1155	1690	1955	18550	35650	52950	53450

LENTILS

PROVINCE	HARVESTED ACRES (1,000)				PRODUCTION (1,000)			
	1992	1993	1994	1995	1992	1993	1994	1995
Alberta	45	30	40	38	34,500	20,700	43,000	47,500
Manitoba	155	80	115	50	175,000	53,200	110,000	62,900
Saskatchewan	460	700	800	720	560,000	695,000	840,000	842,000
TOTAL	660	810	955	806	769,500	768,900	993,000	952,400

Source: Statistics Canada, Field Crop Reports

Dry Edible Beans, Production by Commercial Class (1,000 cwt)

Small Red

State	1991	1992	1993	1994	1995
ID	447	327	460	508	335
MI					160
WA	304	280	324	265	250
Total	751	607	784	773	745

Small White

State	1991	1992	1993	1994	1995
ID	118	71	46	64	62
MI	15	24	20	10	15
OR	26	29	34	53	36
WA	94	42	31	37	50
Total	353	166	131	164	163

Great Northern

State	1991	1992	1993	1994	1995
CO	42	27	2	14	64
ID	183	75	52	73	158
KS	15				28
MN					67
NE	2201	1270	797	1478	1723
WA	43				40
WY	104	44	7	80	96
Total	2588	1416	858	1645	2176

Pink

State	1991	1992	1993	1994	1995
CA		87	90	151	110
ID	697	407	544	462	301
MN					66
MT	15	6			
ND			24	87	59
NM	18	24	15	28	18
WA	92	85	118	87	110
Total	822	609	791	815	664

Cranberry

State	1991	1992	1993	1994	1995
CA					50
ID					19
MI	478	380	530	360	470
MN			28	59	44
Total	478	380	558	419	583

Baby Lima

State	1991	1992	1993	1994	1995
CA	975	498	351	609	535
Total	975	498	351	609	535

Black

State	1991	1992	1993	1994	1995
CA					40
CO			45	10	19
ID			32	40	55
MI	642	570	970	990	1700
MN					83
NE			32	32	17
ND			38	87	208
NY	99	90	120	146	135
WA		26	33	80	60
Total	741	758	1270	1462	2317

Blackeye

State	1991	1992	1993	1994	1995
CA	923	510	548	771	1000
TX	61	67	74	71	121
Total	984	577	622	842	1121

Large Lima

State	1991	1992	1993	1994	1995
CA	681	615	350	429	450
Total	681	615	350	429	450

Pea Bean (Navy)

State	1991	1992	1993	1994	1995
CO	30	8	17	36	14
ID	52	63	73	70	139
KS	14		30	26	17
MI	4940	2970	4060	2750	3950
MN	749	494	217	678	845
NE	64	13	76	66	110
NM	68	78	45	93	85
ND	2310	1305	704	1524	2086
OR	41	40	40	19	43
WY		47	21	29	30
Total	8268	5018	5283	5291	7319

Garbanzo

State	1991	1992	1993	1994	1995
CA			222	262	300
ID			17	9	63
OR			10	13	20
WA			52	44	102
Total			301	328	485

Dry Edible Beans, Production by Commercial Class (1000 cwt)

<i>All Red Kidney*</i>						<i>Light Red Kidney</i>					<i>Dark Red Kidney</i>				
State	1991	1992	1993	1994	1995	State	1992	1993	1994	1995	State	1992	1993	1994	1995
CA	397	469	523	388	295	CA	346	402	263	220	CA	123	121	125	75
CO	60	153	99	154	263	CO	153	99	154	263	ID	12	15	11	20
ID	47	23	30	22	38	ID	11	15	11	18	MI	100	160	230	210
MI	408	240	340	400	410	MI	140	180	170	200	MN	386	283	692	399
MN	681	505	356	897	499	MN	119	73	205	100	ND	58	45	93	43
NE	191	175	200	241	234	NE	175	200	241	234	NY	28	60	73	64
ND		58	45	93	43	NY	155	230	303	292	WI	158	145	237	117
NY	332	194	290	376	356	WA		21			Total	865	829	1461	928
WA			21			Total	1099	1220	1347	1327					
WI	207	158	145	237	117										
Total	2323	1917	2004	2808	2255										

Prior to 1991 Light Red Kidney and Dark Red Kidney were combined.

<i>Pinto</i>						<i>Other</i>						<i>Total</i>					
State	1991	1992	1993	1994	1995	State	1991	1992	1993	1994	1995	State	1991	1992	1993	1994	1995
CO	3173	2370	2438	2912	2158	CA	259	77	126	127	180	CA	3235	2445	2210	2771	2960
ID	1322	576	826	1414	971	CO	25	50	8	14	40	CO	3330	2608	2609	3140	2558
KS	504	325	330	508	410	ID	66	27	11	29	19	ID	2932	1584	2091	2691	2160
MI	131	75	95	60	70	KS	11	12	18	26	26	KS	544	350	378	560	481
MN	445	326	196	295	433	MI	39	31	65	110	155	MI	6753	4290	6080	4680	6930
MT	143	175	155	220	205	MN	105	91	39	107	18	MN	1980	1416	836	2079	2055
NE	1535	1008	966	1719	1414	NE	18	59	29	36	90	MT	158	181	155	220	205
NM	148	146	127	155	140	NM	6	6	2	7	8	NE	4009	2525	2100	3572	3588
ND	4846	3213	2103	4280	4704	NY	52	32	49	63	47	NM	240	254	189	283	251
OR	41	15	39	76	40	ND	392	47	50	39	82	NY	483	305	459	585	538
TX	258	284	204	121	23	OR	39	18	51	36	69	ND	7548	4680	2964	6110	7182
UT	26	40	24	24	32	TX	54	71	33	26	81	OR	147	121	174	197	208
WA	375	135	210	273	250	WA	66	33	9	54	40	TX	373	422	311	218	225
WY	696	484	346	684	499	WY		17	16	28	15	UT	26	40	24	24	32
Total	13643	9172	8059	12741	11349	Total	1132	571	506	702	870	WA	1000	644	798	840	902
												WI	207	158	145	237	117
												WY	800	592	390	821	640
												Total	33765	22615	21913	29028	31032

Source: USDA, NASS and Annual Crop Summary - January 1996

Dry Pea and Lentil Production Data 1991-1995*

REGULAR GREEN

Year	Acreage	Average lbs.	Production lbs.
1995	159,249	2,255	359,127,907
1994	107,074	1,701	182,138,971
1993	144,185	2,096	302,180,620
1992	150,122	1,467	220,198,154
1991	156,127	2,019	315,269,678
<i>10 Yr Avg</i>	140,972	1,898	267,520,047

LENTIL

Year	Acreage	Average lbs.	Production lbs.
1995	129,395	1,250	161,804,536
1994	174,677	917	160,189,216
1993	155,838 ^b	1,319	205,474,833
1992	132,027 ^b	1,160	153,096,575
1991	127,457	1,317	167,894,338
<i>10 Yr Avg</i>	131,416	1,124	147,714,767

SMALL SIEVE GREEN

Year	Acreage	Average lbs.	Production lbs.
1995	7,839	2,645	19,327,020
1994	7,615	1,784	13,586,278
1993	3,917	2,087	8,175,949
1992	5,288	1,479	7,818,433
1991	6,760	2,009	13,582,862
<i>10 Yr Avg</i>	7,002	2,020	14,141,641

YELLOW PEA

Year	Acreage	Average lbs.	Production lbs.
1995	23,192	1,683	34,291,888
1994	9,789	1,571	15,381,632
1993	4,894	2,594	12,695,981
1992	13,392	1,534	20,542,915
1991	26,057	1,705	44,426,378
<i>10 Yr Avg</i>	20,378	1,683	34,291,888

CHICKPEA

Year	Acreage	Average lbs.	Production lbs.
1995	13,137	1,369	17,978,008
1994	4,165	513	2,136,373
1993	6,729	827	5,618,798
1992	6,772 ^a	821	5,008,250
1991	4,440	821	3,644,685
<i>10 Yr Avg</i>	7,123	860	6,123,592

AUSTRIAN WINTER PEA

Year	Acreage	Average lbs.	Production lbs.
1995	8,224	1,406	11,563,195
1994	4,931	1,154	5,690,485
1993	11,857	1,276	15,130,100
1992	7,808	1,050	8,198,174
1991	12,767	1,056	13,481,467
<i>10 Yr Avg</i>	12,639	1,476	18,656,122

* Figures include U.S. dry pea and lentil figures as reported by member processors and WA & ID Chickpeas

** Acres Represent Harvested Acres

^a Adjusted Acreage
^b Small Brown Lentils not included
 Source: USA Dry Pea and Lentil Council

Lentil

State	<i>Area Planted</i> (1,000 Acres)					<i>Area Harvested</i> (1,000 Acres)					<i>Yield</i> (Pounds)					<i>Production</i> (1,000 Cwt.)				
	1991	1992	1993	1994	1995	1991	1992	1993	1994	1995	1991	1992	1993	1994	1995	1991	1992	1993	1994	1995
Idaho	47.0	50.0	57.0	86.0	69.0	46.0	49.0	56.0	85.0	68.0	1,350	1,200	1,500	1,100	1,350	621	588	840	935	918
Washington	76.0	78.0	88.0	94.0	79.0	75.0	77.0	87.0	93.0	75.0	1,400	1,270	1,340	990	1,400	1,050	978	1,166	921	1,050
United States	123.0	128.0	145.0	180.0	148.0	121.0	126.0	143.0	178.0	143.0	1,381	1,243	1,403	1,043	1,376	1,671	1,566	2,006	1,856	1,968

Dry Edible Pea

State	<i>Area Planted</i> (1,000 Acres)					<i>Area Harvested</i> (1,000 Acres)					<i>Yield</i> (Pounds)					<i>Production</i> (1,000 Cwt.)				
	1991	1992	1993	1994	1995	1991	1992	1993	1994	1995	1991	1992	1993	1994	1995	1991	1992	1993	1994	1995
Idaho	80.0	57.0	50.0	49.0	70.0	79.0	55.0	47.0	47.0	68.0	1,900	1,700	2,000	1,800	2,300	1,501	935	940	846	1,564
Washington	110.0	102.0	99.0	82.0	96.0	108.0	100.0	98.0	81.0	95.0	2,050	1,600	2,400	1,704	2,300	2,214	1,600	2,352	1,409	2,185
United States	190.0	59.0	149.0	131.0	166.0	187.0	155.0	145.0	128.0	163.0	1,987	1,635	2,270	1,762	2,300	3,715	2,535	3,292	2,255	3,749

Austrian Winter Pea

State	<i>Area Planted</i> (1,000 Acres)					<i>Area Harvested</i> (1,000 Acres)					<i>Yield</i> (Pounds)					<i>Production</i> (1,000 Cwt.)				
	1991	1992	1993	1994	1995	1991	1992	1993	1994	1995	1991	1992	1993	1994	1995	1991	1992	1993	1994	1995
Idaho	12.0	10.0	12.0	6.0	10.0	11.0	8.0	10.0	4.0	7.0	1,200	1,100	1,500	1,100	1,500	132	88	150	44	105
Oregon	1.0	1.2	1.0	1.0	0.9	0.5	0.7	.5	.6	0.7	1,400	1,500	1,000	1,170	1,600	7	11	5	7	11
United States	13.0	11.2	13.0	7.0	10.9	11.5	8.7	10.5	4.6	7.7	1,209	1,138	1,476	1,109	1,506	139	99	155	51	116

Wrinkled Seed Pea

State	<i>Production (1,000 cwt)</i>				
	1989	1990	1991	1992	1995
Idaho	655	596	639	397	577
Washington	595	326	286	140	272
United States	1,250	922	925	537	849

Dried Beans, U.S. Exports by Country of Destination, October 1994-September 1995

Metric Tons

<i>Country</i>	<i>Navy or Pea</i>	<i>Great Northern</i>	<i>Large Lima</i>	<i>Baby Lima</i>	<i>White n.e.c.</i>	<i>Lt Red Kidney</i>	<i>Dk Red Kidney</i>	<i>Pinto</i>	<i>Black</i>	<i>Beans n.e.c.</i>	<i>Seed Beans</i>	<i>Small Red</i>	<i>TOTAL</i>
NORTH AMERICA:													
Barbados							9	67					76
Bermuda										7			7
Canada	772					970	233			2048	1571	597	6191
Cayman Is.							7						7
Costa Rica	26				15	3		6		22	86	18	156
Dominican Rep.	148		16			18	20	2325		18		20	2565
French W. Indies	28					895	419		5	300	15		1662
Guatemala		12						716	178	14	27		947
Haiti	57		94	45				20358	272	627	49	169	21671
Honduras												1345	1345
Jamaica & Dep.			3	26			161			23	21		234
Leeward-Windward Is.							59		4	19			82
Mexico	760						233	8568	2117	704	428	16	12826
Netherlands-Antilles							20			17		4	41
Nicaragua												426	426
Panama	37		2	38		18	18	40		108			261
Trinidad & Tobago	34	18		20		135	451			420	15		1093
SOUTH AMERICA:													
Argentina											54		54
Bolivia									68				68
Brazil	1281	634				15	404	239	2000	882		136	5591
Chile					36						96		132
Colombia						100	38			19	52	1344	1553
Ecuador						40						156	196
French Guiana	7					195	11				20		233
Guyana								275		9			284
Peru	14							820		3	12	309	1158
Surinam								20					20
Uruguay				19							1		20
Venezuela	1123	250		73		474	561	20	5047	363	6	1121	9038
EUROPE:													
Armenia, Rep. of								749				1501	2250
Azerbaijan												4249	4249
Belgium & Luxembourg	504	2420				73	3047	310		122			6476
Bosnia-Herzegovina	7651							1042					8693

Dried Beans, U.S. Exports by Country of Destination, October 1994-September 1995

Metric Tons

Country	Navy or Pea	Great Northern	Large Lima	Baby Lima	White n.e.c.	Lt Red Kidney	Dk Red Kidney	Pinto	Black	Beans n.e.c.	Seed Beans	Small Red	TOTAL
Croatia								138					138
Czech Republic	10							133				10	153
Cyprus							26			257	17		300
France	328	9003			36	76	3727	598		470	419		14657
Georgia, Republic of							580					2209	2789
Germany	25	919			229		1429	762		129	31	31	3555
Greece	278	4670								585	14		5547
Hungary											5		5
Ireland	2023	40	189				35				3		2300
Italy	6033	1045	54	36		274	6664	202	48	3128	1741	30	19255
Malta & Gozo	20												20
Netherlands	556	1774	45	118	21		1122	38	65	11681	2713	152	18285
Norway		15										41	58
Poland		135					113	14	5				267
Portugal	257	444				1045	260	652	61	676			3395
Russian Federation				5			40	123		35			203
Slovakia							24	72					96
Slovenia							98						98
Spain	943	2944	18			138	386	219	67	1250	434		6399
Sweden		113				36	279	3		33	240		704
Switzerland	25						399	61					485
Turkey		3158					428			218	11		3815
Ukraine								100					100
United Kingdom	56083		1634	112			7631	169	87	187	209	41	66153
ASIA:													
Bahrain						22			12	94			128
China (Mainland)											3	20	23
Hong Kong	18					11	133		56	194	743	18	1173
India								16	54	20			90
Israel	313	1295							24	71	77		1780
Japan	343	2328	867	16269	82	15	809	13	43	643	571	2362	24345
Jordan											144		144
Korea	1180	436	112		91		56			39			1896
Kuwait		99					89		18	95			301
Lebanon	38										2		40
Malaysia	177	1144			105	20	100			95			1641
Oman											17		17
Philippines		1718											1718
Saudi Arabia	53	48				9	143		17	842	179		1291

Dried Beans, U.S. Exports by Country of Destination, October 1994-September 1995

Metric Tons

Country	Navy or Pea	Great Northern	Large Lima	Baby Lima	White n.e.c.	Lt Red Kidney	Dk Red Kidney	Pinto	Black	Beans n.e.c.	Seed Beans	Small Red	TOTAL
Singapore		11								18			29
Sri Lanka											72		72
Taiwan	38	21		18					73	97	6	6	259
Thailand											21		21
United Arab Emirates	76		4	4		190	143		405	221			1043
Yemen											19		19
OCEANIA:													
Australia		792	318	140	353	59	434	583			608	967	4254
French Pacific Is.		9			58					111		73	251
New Zealand	37	18		70			86	9	2	20	130	88	460
Other Pacific Is.											3		3
AFRICA:													
Algeria	9719	68			8288			7442			36		23531
Angola								10676					10676
Benin								3394					3394
Burkina Faso								1718					1718
Burundi												259	259
Ethiopia								1038					1038
Kenya								4480					4480
Liberia								4946					4946
Morocco	239												239
Mozambique								1217					1217
Rwanda								11987					11987
Senegal											4		4
Sierra Leone								902					902
So. Africa, Rep of	1086			54						133	123	19	1415
Tanzania								8005					8005
Togo								29					29
W. Africa, NEC								356					356
Zaire								17853					17853
Total	92320	35581	3388	17047	7292	4831	30927	113603	10728	27067	11028	17737	371527
Crop Year (Sep-Aug)	95422	36482	3215	17220	7418	5415	32757	145642	9543	26822	10815	19973	410724

Source: Bureau of Census. Compiled by USDA Bean Market News

Dried Peas, U.S. Exports by Country of Destination, October 1994-September 1995

Metric Tons

Country	Lentil	Yellow	Green	Other n.e.c.	Austrian Winter	Blackeye	Seed	Total Season
WESTERN HEMISPHERE:								
Argentina				18			59	77
Barbados	29	33	25				60	147
Belize		18						18
Bolivia	1752							1752
Brazil		21	2000	38				2059
Canada	637			1604			8165	10406
Chile			105				464	569
Colombia	41	312	625	2607		235	35	3855
Costa Rica	3		108	181		4	3	299
Dominican Republic	124		49	9			4	182
Ecuador			147	97				248
El Salvador			18					18
French Guiana	23					14		37
Guatemala							79	79
Guyana		254		48				302
Haiti	70		21526	24				21620
Leeward-Windward	4					5		9
Mexico	1638	483	1950	69	20		437	4597
Netherlands Ant.			14			27	40	81
Panama	35	43	190					268
Peru	8913	82	8511				537	18043
Surinam				40				40
Trinidad-Tobago	42	292	224	340		75	20	993
Venezuela		20	251	62			69	402
EUROPE:								
Armenia, Rep. of	768							768
Belgium-Lux.	128		114	116			240	598
Bulgaria	328							328
Bosnia-Herzegovina	1100	1433						2533
Croatia			7465					7465
Cyprus				127		174		301
Denmark	2			24			956	982
Finland							348	348
France	42		942	242			2130	3356
Germany	679			618			1323	2620
Greece	1514			59		370	125	2068

Dried Peas, U.S. Exports by Country of Destination, October 1994-September 1995

Metric Tons

Country	Lentil	Yellow	Green	Other n.e.c.	Austrian Winter	Blackeye	Seed	Total Season
Hungary				13			15	28
Iceland							20	20
Ireland							51	51
Italy	3101		855	492		142	2324	6914
Malta Gozo			3				25	28
Netherlands	269		131				1360	1760
Norway		20	327				102	449
Portugal	21			669		283	152	1125
Spain	15847		492	1439		429	2435	20642
Sweden	100			20		18	1090	1228
Switzerland	24		8					32
Turkey			124				13	137
United Kingdom			185	238		490	3351	4264
ASIA:								
Bahrain	47					90		137
China (Mainland)	169		82	14			36	301
Hong Kong	16	144	74	70	92	552	227	1175
India			3939	104				4043
Indonesia							3	3
Israel	5		247	54		88	324	718
Japan	170		1325	661	797	79	344	3376
Jordan			4					4
Korea			469	198			5	672
Kuwait	59	8	3	162		68	18	318
Lebanon			83				54	137
Malaysia			87	39			6	132
Pakistan	21		176				38	235
Philippines	42	362	7230	38				7672
Saudi Arabia	120		57	589		266	68	1100
Singapore			21	93		50		164
Syria							10	10
Taiwan	21	1069	1065	10	399	150	29	2743
United Arab Em.				692		18	462	1172
OCEANIA:								
Australia	154		21	13		55	65	308
Fr. Pacific Is.	455							455
New Zealand				131			70	201

Dried Peas, U.S. Exports by Country of Destination, October 1994-September 1995

Metric Tons

Country	Lentil	Yellow	Green	Other n.e.c.	Austrian Winter	Blackeye	Seed	Total Season
AFRICA:								
Algeria	9278		17				216	9511
Angola	1098		794					1892
Egypt							20	20
Ethiopia	2154							2154
Ghana						15		15
Kenya	855						27	882
Morocco							180	180
Rwanda	8699		8143					16842
Somalia	1998							1998
So. Africa, Rep. of							144	144
Sudan	5996							5996
Tanzania			70					70
Zimbabwe							56	56
Total	68591	4594	70296	12062	1308	3697	28434	188982
Crop Year (Sep '94- Aug '95)	63048	3056	72861	12042	1095	4073	27074	183249

Source: Bureau of Census, Compiled by USDA Bean Market News

USDA/CCC Purchases of Dry Edible Beans, Peas & Lentils Under PL480 Program for Export Distribution *(metric tons)*

CLASS	FY93	FY94	FY95
Pea Bean	4,110	28,270	1,290
Pinto	24,930	55,320	64,422
Great Northern	5,170		
Small Red	4,500	7,185	2,542
Black	6,960	1,390	460
Light Red Kidney		1,020	1,080
Dark Red Kidney		1,214	2,133
Lentil	37,060	37,780	33,660
Green Pea, Whole	13,500	27,600	41,045
Yellow Pea, Split	1,890		
Yellow Pea, Whole			5,570
Small White			210
TOTAL	98,660	159,779	152,412

**USDA Purchases of Canned Dry Beans, Peas and Lentils for Use
in Various Domestic Feeding Programs (1,000 pounds)**

Class	Nov '90 Sep '91	Oct '91 Sep '92	Oct '92 Sep '93	Oct '93 Sep '94	Oct '94 Sep '95
Baby Lima			1,108	455	521
Blackeye			1,182	665	735
Black					140
Garbanzo			259	3,079	245
Great Northern			1,071	1,485	815
Green Pea	2,218	23,151	18,439	9,961	12,110
Red Kidney			2,216	1,680	1,750
Pigeon Pea			734	356	
Pink			2,696	1,865	1,715
Pinto		4,395	5,984	5,459	7,733
Refried Bean	3,748	6,939	15,888	7,198	5,080
Small Red			1,847	2,869	3,079
Vegetarian Bean	47,829	19,736	22,367	16,949	16,523
Total	53,795	54,281	73,791	52,021	49,949

**USDA Purchases of Dry Edible Beans, Peas & Lentils
for Use in Various Domestic Feeding Programs (1,000 pounds)**

Class	Nov '90 Sep '91	Oct '91 Sep '92	Oct '92 Sep '93	Oct '93 Sep '94	Oct '94 Sep '95
Baby Lima	280	885	342	645	501
Blackeye	480	1,407	202	161	1,371
Garbanzo		40			40
Great Northern	560	2,332	4,636	3,386	2,136
Green Pea		2,400			40
Green Split Pea		120	40	161	282
Lentil		142	81		81
Pea Bean			40	81	363
Pink					
Pinto	4,760	10,420	9,144	7,784	12,692
Red Kidney	380	281	1,732	4,838	1,613
Small Red	40		242	645	40
Small White		40			40
Total	6,500	18,027	16,359	17,651	19,263

Source: Fruit and Vegetable Division, USDA

U.S. Exports, Dry Beans (cwt)

Beans	Oct 1990-Sep 1991	Oct 1991-Sep 1992	Oct 1992-Sep 1993	Oct 1993-Sep 1994	Oct 1994-Sep 1995
Beans n.e.c.**	1,389,714	1,505,896	865,173	742,245	596,719
Black	510,563	238,868	294,909	198,612	236,554
Garbanzo	NA	118,652	45,679	54,230	213,880
Great Northern	1,227,169	612,989	340,743	361,488	784,375
Lima	471,167	517,508	464,664	483,667	450,069
Navy or Pea	2,668,227	2,039,387	1,811,696	1,576,532	2,035,265
Pinto	4,138,056	2,176,822	1,246,503	1,860,264	2,504,514
Red Kidney	482,543	966,761	785,808	776,196	788,299
Seed	355,558	453,067	442,287	239,552	243,079
Small Red	*	*	266,757	389,928	391,030
White n.e.c.	124,913	99,119	151,214	35,406	160,781
TOTAL	11,367,910	8,729,069	6,715,432	6,718,120	8,404,565

*Included with Beans n.e.c. prior to 1992-93

** Includes broad beans and miscellaneous beans

NA - Not Available

U.S. Exports, Dry Ripe Peas (cwt)

Peas	Oct 1990-Sep 1991	Oct 1991-Sep 1992	Oct 1992-Sep 1993	Oct 1993-Sep 1994	Oct 1994-Sep 1995
Austrian Winter	26,654	23,479	45,900	69,842	28,858
Blackeye	149,759	88,581	159,150	68,739	81,482
Green	1,245,136	1,531,447	1,372,826	1,710,285	1,549,856
Lentils	919,450	792,730	1,343,725	1,978,011	1,512,069
Other n.e.c.	159,216	146,981	68,078	118,056	265,897
Seed All Types	499,761	494,734	474,893	571,895	626,790
Yellow	113,801	129,454	146,231	220,504	101,279
TOTAL	3,113,777	3,207,406	3,610,803	4,737,332	4,166,231

Source: Bureau of the Census

U.S. EXPORTS SHELLED BEANS OTHER THAN CANNED DRIED, OCTOBER/SEPTEMBER (Metric Tons)

COUNTRY	1991/92	1992/93	1993/94	1994/95	COUNTRY	1991/92	1992/93	1993/94	1994/95
Australia	106	281	422	800	Indonesia		6		55
Bahamas	18			6	Italy	7	9	17	29
Bahrain		9		12	Japan	17	9	9	211
Barbados		18		11	Kenya			4	
Belgium-Luxembourg				7	Korea, Rep. of	378	139	195	226
Bermuda	4				Kuwait	78	13		47
Brazil			2	9	Lebanon				26
Brunei				3	Malaysia			38	4
Canada	802	946	899	1127	Marshall Islands		8	9	
Cayman Islands		13			Mexico	284	360	757	380
Chile	8				Netherlands Antilles	81	38	71	75
China				25	Netherlands	46	40	58	129
Colombia	139		4	18	New Zealand			21	29
Costa Rica		26		14	Nicaragua		9		
Cyprus		6			Norway		9	22	86
Czechoslovakia	67				Oman	16			7
Denmark				41	Panama	32	76	269	123
Dominican Republic			43		Philippines	12			14
El Salvador				6	Russian Federation				92
Egypt				1	Saudi Arabia	393	32	34	91
Finland	7	17		39	Singapore	92	13	92	199
French Pacific Islands	23	56		87	Slovenia				6
French West Indies			16		Spain	16	21	24	37
France	38	46	49	153	Sweden	13	1	6	239
Germany	6	113	143	108	Taiwan	8	2	105	5
Georgia, Rep. of			41		Thailand				29
Greece				48	United Arab Emirates		41	51	11
Guatemala		4			United Kingdom	25	47	73	67
Honduras				32	Venezuela	5	59	19	157
Hong Kong	131	131	132	405	Yemen				14
Iceland				2	TOTAL	3053	2803	3620	5343

U.S. EXPORTS OF BEANS OTHER THAN SHELLED, OCTOBER/SEPTEMBER (Metric Tons)

COUNTRY	1991/92	1992/93	1993/94	1994/95	COUNTRY	1991/92	1992/93	1993/94	1994/95
Angola	31				Korea, Rep. of	8	74		21
Australia	326	381	431		Kuwait	186	67	15	5
Bahamas		5	18		Lebanon		17		15
Barbados		8		18	Loeward-Windward Is.	144	63		18
Belgium-Luxembourg	268	220			Marshall Islands		28		
Bolivia			4		Mauritius		31		
Brazil				18	Mexico	477	826	1103	1228
Canada	838	948	388	560	Nepal				
Cameroon				19	Netherlands	90	231		1
Cayman Islands	5				Netherlands Antilles	98	77	110	32
Chile		11			New Zealand	52	56	33	
Colombia				13	Norway				18
Costa Rica	31				Oman		132		20
Czech Republic			20		Panama	580	436	741	594
Dominican Republic	10	75	39		Peru	116			
Ecuador		91	18		Philippines	25	208	21	
Egypt			5		Poland		11		
El Salvador		7			Qatar		12		

Finland	13		9		Romania				14
France			9		Russian Federation	7	342	124	76
French Pacific Islands	116	193	277	291	Saudi Arabia	1098	605	4	20
Ghana				12	Singapore	8	9	14	
Germany	458	280		76	South Africa, Rep. of	41	115	61	80
Greece	8	45			Spain	35			
Guatemala				24	Sweden	10			15
Haiti				29	Taiwan	7		15	
Hong Kong	27	61	6		Turks & Caicos Is		2	2	
Iceland	3				United Arab Emirates	50	35	67	20
Ireland		128			United Kingdom	11	33	39	
Israel	161	15			Venezuela	20	60	1	13
Italy		555	2		W. Africa, nec				18
Jamaica & Dep.				22	Yemen			9	
Japan	5		4		TOTAL	5423	6432	3589	3345

U.S. EXPORTS OF SHELLED CANNED DRY BEANS, OCTOBER/SEPTEMBER (In Cases of 24/30.3)*

COUNTRY	1991/92	1992/93	1993/94	1994/95	COUNTRY	1991/92	1992/93	1993/94	1994/95
Angola		5			Korea, Rep. of	20	10	28	27
Argentina		6			Kuwait	82	97	95	23
Australia	4		1		Latvia				57
Bahamas	2	27	14	1	Lebanon	6	1		5
Bahrain	23	14	17	6	Leeward-Windward Islands		71	79	17
Barbados				1	Malaysia		6	4	3
Belgium-Luxembourg	1	33		1	Mexico	131	58	129	124
Brunei		1			Netherlands	14	28	20	5
Canada	1594	1889	1403	1461	Netherlands Antilles	15	17	20	4
Colombia			3		New Zealand		6	1	2
Costa Rica	6	2	5		Norway	13	49	19	10
Czechoslovakia	2				Oman	34	21	4	
Denmark	22	19	22	13	Panama	114	39	20	3
Dominican Republic				54	Philippines	11	2		
Egypt	7				Qatar		25	25	
El Salvador			3		Russian Federation		10	5	7
Finland	7	12	8	5	Saudi Arabia	391	220	341	31
France	58	68	72	37	Singapore	54	65	54	43
French Guiana	33	5			Sudan				13
French Pacific Islands		26			Sweden	74	62	69	38
Germany	13	13	2		Switzerland	5			
Greece	40	60	63	15	Taiwan	27		1	
Guatemala		1	139	81	Trinidad Tobago		14	6	
Hong Kong	68	142	73	39	United Arab Emirates	186	329	98	16
Iceland				3	United Kingdom	243	22	12	8
Indonesia		18	25	4	Venezuela	2	5	2	5
Israel	1				Yemen			7	
Japan	85	139	207	102	TOTAL	3389	3650	3111	2266
Jordan		12	18						

*24 lbs. net weight canned beans per case is equivalent to about 8 lbs. dry beans per case. For continuity of export data, figures shown are dry bean equivalent in metric ton.
Source: USDA, Foreign Agricultural Service and Bureau of Census

WORLD PULSE PRODUCTION (1,000 Metric Tons)***

COUNTRY	1979-1981	1991	1992	1993	1994	COUNTRY	1979-1981	1991	1992	1993	1994
WORLD	40674	56122	54284	56989	58000	Korea D P Rep	280	330F	310F	290F	293F
AFRICA	5111	7285	6454	6854	6764	Pakistan	595	727	709	556	616
Burkina Faso	46	120	62F	62F	63F	Syria	180	134	200	198	171
Burundi	317	377	386	376	287	Tajikistan**			10	5	6F
Egypt	283	544	280	321	317F	Thailand	342	455	401	440	441F
Ethiopia PDR**	962	824	815F			Turkey	817	1972	1822	1936	1818
Eritrea**				13F	13F	Yemen	80	43	76	76	72*
Ethiopia**				802F	800F	EUROPE	2557	7157	6972	7475	7276
Kenya	185	189	215	200F	200F	Belarus**			164F	150F	140F
Morocco	229	457	163	277	260	Bosnia Herzg**			23	17F	16F
Niger	292	441	458F	433	433F	Bulgaria	68	73	64	50	58F
Nigeria	647	1559	1575	1650F	1750F	Croatia**			20	22	22F
Rwanda	221	226F	163	208F	142F	Czechoslovak**	137	308	351		
South Africa	110	139	53	89	93	Czech Rep **		191		220	220F
Sudan	99	110	102	115	115F	Estonia**					
Tanzania	315	424F	312F	337F	302F	France	340	3257	3444	3853	3593
Tunisia	89	98	96	100	65	Greece	94	53	51	45	45F
Uganda	236	492	512	550	572	Hungary	127	284	255	154	165F
Zaire	155	193	195F	196F	198F	Italy	321	255	226	192	192F
NORTH AND CENTRAL AMERICA	3384	4924	3687	4779	5387	Latvia**			8	5	6F
Canada	199	885	933	1453	2032	Lithuania**			27	33F	30F
Dominican Rep	73	88	78	85	90	Macedonia, FYR**			34	25	26
Guatemala	77	116	127	112	113F	Moldova Rep**			122	113	86F
Mexico	1311	1613	949	1479	1242	Poland	216	680	598	639	658
St Kitts Nev**						Portugal	76	63	50	48	62F
USA	1466	1832	1244	1284	1527	Russian Fed**			3078	2898	3000F
SOUTH AMERICA	3024	3619	3727	3318	4243	Slovakia**		117		127	132F
Argentina	239	219	317	276F	277F	Slovenia**			7	5F	5F
Brazil	2206	2774	2820	2500	3373	Spain	365	215	162	172	216
Chile	171	157	147	94	92	UK	240	740	711	771	743
Colombia	128	169	182	184	200	Ukraine**			2986	2898	2800F
Peru	111	111	93	101	123	Yugoslav SFR	204	228			
ASIA	21714	26092	24835	25983	26613	Yugoslavia, FR**			110	83	67F
Armenia**			3	3	2F	OCEANIA	258	1910	2088	2375	1566
China	6648	5812F	6071F	5890F	5939F	Australia	192	1835	2003	2285	1476
India	10509	13694	12078	13145	13699	New Zealand	63	70	80	85F	85F
Indonesia	352	508F	524F	504F	504F	USSR	4627	5136F			
Iran	247	576	670	700*	730F						
Japan	108	136	106	113	113F						
Kazakhstan**			124	100	80F						

* - Unofficial Estimate
 ** - Data not Available
 *** - Latest Information Available
 F - FAO Estimate
 Source: FAO United Nations

WORLD DRY BEAN PRODUCTION (1,000 Metric Tons)***

COUNTRY	1979-1981	1991	1992	1993	1994	COUNTRY	1979-1981	1991	1992	1993	1994
WORLD	13488	16632	15905	16741	17827	China	1748	1512F	2011F	1910F	1928F
AFRICA	1501	2080	1828	1934	1832	India	2561	3514	3615*	4140*	4233F
Angola	42	36	36	36F	34F	Iran	62	188	218*	228*	238F
Benin	31	55	62	58	80	Japan	102	133	102	110F	110F
Burundi	286	338	346	337*	258*	Korea Rep	38	27	28	27F	27F
Cameroon	98	67F	70F	70F	72F	Myanmar	239	351	484	611	693*
Ethiopia PDR**	19		130F			Pakistan	65	88	90	101*	100*
Ethiopia**		130F		130F	130F	Philippines	32	32F	32F	32F	32F
Madagascar	45	40F	73	52	50	Thailand	265	305	261	310	310F
Rwanda	185	210F	150	190F	130F	Turkey	163	214	200	200	188*
South Africa	84	120	34	71	75	Viet Nam	52	110F	112F	115F	119F
Tanzania	251	270F	195F	205F	190F	EUROPE	726	581	487	443	436
Togo	17	17	24	39	39F	Belarus**			13F	7F	12F
Uganda	185	383	402	442	459	Bosnia Herzg**			19F	14F	13F
Zimbabwe	22	48F	40F	45F	46F	Bulgaria	52	38	33	19	25F
						Croatia**			16	18	18F
NORTH AND CENTRAL AMERICA	2618	3485	2263	2810	2899	Estonia**					
Canada	78	113	68	124	130F	France	30	12F	11	11	11F
Costa Rica	12	33	36	33	35F	Greece	41	27*	27	22	23F
Dominican Rep	50	26	37	43	48	Italy	78	35	34	37	37F
El Salvador	41	67	62	62	57	Latvia**				1	1F
Guatemala	68	103	115	100	100F	Lithuania**					
Haiti	51	45F	56	50F	51F	Macedonia, FYR**			13	9	10
Honduras	38	82	47	61	75*	Poland	98	132	99	107	100
Mexico	1015	1379	719	1242	1000*	Portugal	41	37	24	21	35F
Nicaragua	39	72	64	73	77F	Romania	97	46	41	42	37
USA	1210	1532	1026	991	1293	Russian Fed**			7	7F	5F
						Slovenia			5	4F	4F
SOUTH AMERICA	2733	3328	3421	3017	3939	Spain	86	49	36	34	34
Argentina	202	165	250F	200F	200F	Ukraine**			39	38	35F
Brazil	2165	2745	2797	2476	3348	Yugoslav SFR	144	161*			
Chile	113	117	91	55	54	Yugoslavia, FR**			73	48	36F
Colombia	77	108	120	122	137	OCEANIA	3	22	19	31	25
Ecuador	26	26	28	29	30	USSR	60	60F			
Paraguay	55	40	41	41F	41F						
Peru	55	53	42	49	71						
Venezuela	32	59*	38	30	42						
ASIA	5846	7156	7826	8448	8641						
Armenia**			2	3	2F						
Bangladesh	107	85*	69*	82*	82F						

* - Unofficial Estimate
 ** - Data not Available
 *** - Latest Information Available
 F - FAP Estimate
 Source: FAO United Nations

WORLD GARBANZO (CHICK-PEA) PRODUCTION (1,000 Metric Tons)***

<i>COUNTRY</i>	<i>1979-1981</i>	<i>1991</i>	<i>1992</i>	<i>1993</i>	<i>1994</i>	<i>COUNTRY</i>	<i>1979-1981</i>	<i>1991</i>	<i>1992</i>	<i>1993</i>	<i>1994</i>
WORLD	6070	8061	6766	6785	7035	EUROPE	98	63	51	51	78
AFRICA	251	313	263	278	250	Bulgaria**		6*	4	3	3F
Algeria	16	24*	21F	21F	22F	Greece	15	5	5	5	5F
Egypt	11	10	10	16	12F	Italy	16	12	12F	13F	13F
Ethiopia PDR	128		120F			Portugal	12	39	30	29	57
Eritrea**				1F	1F	Spain**	53				
Ethiopia**		120F		119F	119F	OCEANIA		221	175	170	110
Morocco	38	67	26	22	24F						
Tanzania	7	24F	16F	20F	15F						
Tunisia	29	23	30	36	15						
NORTH AND CENTRAL AMERICA	218	195	195	196	201						
Mexico	218	195	195F	196F	201F						
SOUTH AMERICA	26	25	35	27	26						
Argentina	4	2*	2F	2F	2F						
Chile	9	9	19	11	10						
Peru	2	3F	3F	3F	3F						
ASIA	5476	7246	6046	6063	6370						
Bangladesh	87	71	65	67	67F						
India	4474	5356	4121	4348	4700*						
Iran	93	266	309*	323*	336F						
Iraq	12	1	8*	9*	9F						
Israel	4	8	5	4	4F						
Jordan	1	1	2	2F	2F						
Lebanon	3	8	9	10F	10F						
Myanmar	79	104	112	101	60						
Pakistan	396	531	513	347	406						
Syria	49	28	74	55	25						
Turkey	245	855	770	740	694*						

* - Unofficial Estimate

** - Data not Available

*** - Latest Information Available

F - FAP Estimate

Source: FAO United Nations

WORLD PEA PRODUCTION (1,000 Metric Tons)***

COUNTRY	1979-1981	1991	1992	1993	1994	COUNTRY	1979-1981	1991	1992	1993	1994
WORLD	8127	12718	14230	14983	14865	EUROPE	653	4709	4789	5300	5025
AFRICA	356	360	296	341	304	Austria	16	90F	83F	87F	93F
Algeria	3	3*	4F	4F	4F	Belarus**			50F	57F	58F
Burundi	28	37	37	37*	27*	Bel-Lux	3	18	14	24	25F
Egypt	5	1	3	2	3F	Bulgaria	13	33	30	30F	32F
Ethiopia PDR**	183	110F	110F			Croatia**			1		
Eritrea**				1F	1F	Czechoslovak**	63	252	321		
Ethiopia**				109F	109F	Czech Rep **				206	206F
Lesotho	4	2F	2F	2F	2F	Denmark	10	154	301	451	451F
Morocco	24	68	10	50	29	Estonia**					
Rwanda	36	16F	13	18F	12F	Finland	13	98	29	30	33F
South Africa	7	6	7	4	5F	France	224	412	3346	3756	3513
Tanzania	7	24F	16F	20F	15F	Germany	42	28	18F	15	17F
Uganda	7	15	15	16	17	Germany NL		3155			
						Greece	2	9*			
NORTH AND CENTRAL AMERICA	260	633	656	1172	1606	Hungary	96	269	242	140	151F
Canada	88	410	505	970	1441	Italy	5	44	35	29	29F
Dominican Rep	1	1F	1F	1F	1F	Latvia**			7	4	5F
Mexico	4	2	2F	3F	3F	Lithuania**			14	16F	15F
USA	163	217	144	195	158F	Macedonia, FYR**			1	1	1F
						Moldova Rep**			104	93	75F
SOUTH AMERICA	102	95	116	122	123	Netherlands	15	30	18*	9*	9F
Argentina	15	12*	30F	38F	38F	Romania	17	32	33	36	38
Bolivia	5	6F	6F	6F	6F	Russian Fed**			2607	2400*	2520F
Chile	13	5	8	5	5F	Slovakia**				112*	120F
Colombia	33	44F	44F	44F	45F	Slovenia**					
Ecuador	7	3F	3	3F	3F	Spain	5	11	8	10	8
Paraguay	3	2F	2	2F	2F	Sweden	8	9	10F	10F	10F
Peru	22	18F	19F	19F	19F	UK	106	280	261	321	258
Uruguay	2	3F	3F	3F	3F	Ukraine**			2776	2731	2600F
Venezuela	2	2F	2F	2F	2F	Yugoslav SFR	15	26			
						Yugoslavia, FR**			24	21	20F
ASIA	2710	2084	2180	2064	2094	OCEANIA	139	538	532	603	380
Armenia**						Australia	77	473	456	523	300*
China	2267	1400F	1500F	1380F	1380F	New Zealand	62	65	75	80F	80F
India	295	550*	552	551	579F						
Israel	1	1F	1			USSR	3906	4255F			
Japan	2	1	1	1	2F						
Kazakhstan**			104*	80*	60F						
Myanmar	16	14	16	22	25*						
Syria	1		1	1							
Tajikistan			1	1	1F						
Turkey	7	7	4	4	4*						

* - Unofficial Estimate
 ** - Data not Available
 *** - Latest Information Available
 F - FAP Estimate
 Source: FAO United Nations

CANADIAN EXPORTS (Metric Ton) (Calendar Year)

COUNTRY	LENTILS			PEAS			PEA BEANS			OTHER BEANS*		
	1993	1994	1995	1993	1994	1995	1993	1994	1995	1993	1994	1995
NORTH AMERICA												
Costa Rica	692	348	192	252	172	252	64	169	168	65	209	
Cuba					53268	25694						
Dominican Republic	213	172	162	167	1337	877						
Guatemala								21		71	515	
Haiti							39	181		656	444	2390
Honduras											380	
Jamaica										142		100
Martinique							623	3100				40
Mexico	4042	5594	6370	630	2041	3518	68			272		68
Nicaragua								269		359	749	
Panama	2932	2708	6722		14	7697						60
St. Lucia	126	107	159									
Trinidad Tobago	1189	1556	1973	1686	4952	871	41	63	42	12	174	62
United States	2912	2914	2787	2933	4557	14567	4703	4748	7938	5729	8456	7934
SOUTH AMERICA												
Argentina	243	478	5677									
Brazil	4224	7813	7888	83	13598	2416				126	944	297
Chile	4139	6721	10222	661	1050	1161		20	191			
Colombia	7504	35487	32647	3551	26291	21590	250			63	3938	6080
Ecuador	6396	6944	8326	3414	5792	3217					63	
Paraguay								19			39	
Peru	9204	8810	6779	485	1076	3608				126		41
Surinam						417						
Uruguay	843	1247	3186		299	107						
Venezuela	9138	9150	13862	7307	6251	10740				213	1266	1358
EUROPE												
Armenia							408	383	95	19		
Austria									57			
Belgium	48077	24200	18539	103132	143398	209111				847	882	449
Bulgaria	4004											
Cyprus	533	594	721									
Czech Republic		210										
Czechoslovakia, FR	294											
Denmark											14	120
Finland								38				

CANADIAN EXPORTS (Metric Ton) (Calendar Year)

COUNTRY	LENTILS			PEAS			PEA BEANS			OTHER BEANS *		
	1993	1994	1995	1993	1994	1995	1993	1994	1995	1993	1994	1995
France	18346	20839	16519	3019	34308	91799	191		214	3396	1678	875
Germany	12627	9505	14238	5050	22982	4111	3154	2742	2285	531	580	2458
Greece	7588	9889	9807	53	43		20	129	160	196	937	739
Hungary		21	61									
Ireland				11953	12933	18082	95	765	727	38		
Italy	10387	15331	15407	1108	3536	21438	1134	4007	7302	3936	4214	10690
Kyrgyzstan								96				
Luxembourg	270	592	927									
Malta								38	19			
Netherlands	28258	11235	5375	55533	32180	109624	2355	780	3132	3276	806	953
Poland		188	142			379	38			38	18	82
Portugal				755	633	1355			38	1184	1880	2563
Russia								20				
Spain	30265	35962	41514	204298	176819	203596	133	700	1641	2614	2818	4460
Sweden	1531	1481	109	8	181	130				43	20	244
Switzerland		301	3927					38	495			162
Turkey	61	4018	5746						38		59	314
United Kingdom	1428	1647	1641	8832	2221	5811	15396	37592	32253	1852	624	1665
Former Yugoslavia	4315	42								27	291	19
ASIA												
Bangladesh					3313							
China, P. Rep.					86							
Guam											63	
Hong Kong				448	490	250		26	38			
India				25218	89172	44281						14
Indonesia				204	1460	1238						
Israel	1275	3425	1891	20	193				83	117	216	563
Iran Islamic Rep.						7456	76					
Japan				9873	10068	11045	549	1022	665	878	1397	2372
Jordan				156	42	422			38	173		21
Korea, South				140	233	441	375	2828	2051	368	191	156
Kuwait												64
Lebanon	1039	2174	3120									399
Malaysia				1070	2003	4734	76	38				
Nepal				401	257							
Pakistan				436	31871	59662				400		375
Philippines				748	1368	10056						
Saudi Arabia		247	425	300	600	86		812	1317		1047	3482

CANADIAN EXPORTS (Metric Ton) (Calendar Year)

COUNTRY	LENTILS			PEAS			PEA BEANS			OTHER BEANS*		
	1993	1994	1995	1993	1994	1995	1993	1994	1995	1993	1994	1995
Singapore							227	38				
Sri Lanka					370	478						
Taiwan				3062	4258	10535						
Thailand				913	960	985						
United Arab Emirates	418	356	645	149	1238	36773			64			570
Yemen				513	146	647						507
OCEANIA												
Australia	784	445	528		450	287	1814	1833	262		57	19
New Zealand							763	2164	2605			
AFRICA												
Algeria	18431	12982	4021	2727	10887	8800		618	607		2390	
Angola		2332						1671			1048	
Benin	360	132						380			100	
Cameroon							90					
Egypt		224	1147						333			
Kenya		5710									820	200
Libyan Arab. Jam				209								
Malawi												711
Mauritius	1898	761	1726	20	123	205						107
Morocco	3848	3662	21729	142	18	1337			914		240	
Mozambique	4344	21	21				1326	40	76	92	760	3170
Reunion-Africa	123	368	559							20	123	126
Rwanda										1503		
Senegal										259		309
South Africa	506	63	242	4359	5337	6985	2119	857	848	694	67	93
Sudan	523	4296										
Swaziland							30					
Tanzania					20	3415		57		40	813	
Togo					204							
Tunisia	39	225	63									
Zaire		747	1303									
Zambia									164			
Zimbabwe										197		542
Others	1580	2407	2130	524	617	2475	62	28	102	544	175	1018
TOTAL	256979	266681	281165	466542	715716	974761	36219	68330	66962	31116	41505	59041

* Includes Chickpeas, broad adzuki, mung, black or green gram, and kidney beans

Source: Ag Canada