

Exhibit _____

Tables and Charts Submitted by DFA, MMPA and NFO

Table of Contents

Table 1.	Annual Class I Pounds by Federal Milk Order Marketing Area 2004
Table 2 A - E.	Utilization and Statistical Uniform Blend Price: 2000-2004
Table 3.	Comparison of Fluid Use Pounds and Reserve Supply Pounds, Federal Order 1033 January 2000 - December 2004
Table 4 A - E.	Comparison of Relative Return Between Markets: 2000-2004
Table 5.	Summary of Supplemental Milk Purchases Dairy Farmers of America October 2004
Table 6.	Summary of Haul Invoices, Fall/Winter 2004/05
Table 7.	Summary of Mileage Ranges From Market Administrator Data, October 2004
Chart 1.	Comparison of Indexed Fluid Use Pounds versus Reserve Supply Pounds, Federal Order 1033, January 2000 thru December 2004
Chart 2.	Diesel Fuel Midwest Monthly, Department of Energy

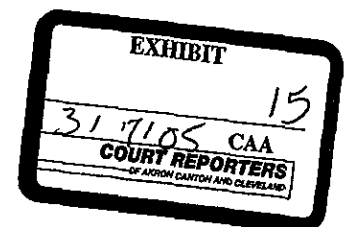


Exhibit _____, Table 1

Annual Class I Pounds by Federal Milk Order Marketing Area, 2004 1/

Federal Milk Order Marketing Area	Order Number	Total Million Pounds
Northeast	001	10,691,759,744
Appalachian	005	4,324,520,728
Southeast	007	4,640,048,012
Florida	006	2,439,560,009
Mideast	033	6,492,911,397
Upper Midwest	030	4,459,140,447
Central	032	4,345,805,673
Southwest	126	4,130,560,724
Arizona - Las Vegas	131	967,161,281
Pacific Northwest	124	2,153,463,181
All Markets Combined		44,644,931,196

1/ All Markets Combined and TOTAL may not add due to rounding.

Exhibit _____, Table 2 - A

Utilization and Statistical Uniform Blend Price

Federal Order 1033

CY 2000

	Base Zone	Class I Price	Class II Price	Class III Price	Class IV Price	Class I Pounds	Class II Pounds	Class III Pounds	Class IV Pounds	All Pounds	Class I Percent	Class II Percent	Class III Percent	Class IV Percent	Actual Blend	Producer Price Differential
Jan	\$ 2.00	\$ 12.90	\$ 11.43	\$ 10.05	\$ 10.73	584,035,392	172,646,565	252,858,950	114,147,156	1,123,688,063	52.0%	15.4%	22.5%	10.2%	\$11.62	\$ 1.57
Feb	\$ 2.00	\$ 12.71	\$ 11.51	\$ 9.54	\$ 10.80	649,647,785	187,566,603	250,519,074	114,147,156	1,101,880,618	49.9%	17.0%	22.7%	10.4%	\$11.52	\$ 1.98
Mar	\$ 2.00	\$ 12.84	\$ 11.71	\$ 9.54	\$ 11.00	586,081,597	223,959,791	277,772,755	77,863,850	1,165,677,993	50.3%	19.2%	23.8%	6.7%	\$11.68	\$ 2.14
Apr	\$ 2.00	\$ 12.93	\$ 12.10	\$ 9.41	\$ 11.38	523,072,595	177,282,846	295,612,331	108,829,415	1,104,797,187	47.3%	16.0%	26.8%	9.9%	\$11.77	\$ 2.36
May	\$ 2.00	\$ 13.48	\$ 12.63	\$ 9.37	\$ 11.91	556,332,894	178,128,237	308,236,353	90,990,868	1,133,688,352	49.1%	15.7%	27.2%	8.0%	\$12.21	\$ 2.84
Jun	\$ 2.00	\$ 13.70	\$ 13.08	\$ 9.46	\$ 12.38	521,550,228	176,612,370	340,348,559	75,949,692	1,114,460,849	46.8%	15.8%	30.5%	6.8%	\$12.38	\$ 2.92
Jul	\$ 2.00	\$ 14.46	\$ 12.58	\$ 10.66	\$ 11.87	514,292,282	212,421,440	386,606,936	99,997,881	1,213,318,539	42.4%	17.5%	31.9%	8.2%	\$12.68	\$ 2.02
Aug	\$ 2.00	\$ 13.95	\$ 12.56	\$ 10.13	\$ 11.87	578,774,964	194,566,618	365,308,855	46,034,028	1,184,684,465	48.9%	16.4%	30.8%	3.9%	\$12.49	\$ 2.36
Sep	\$ 2.00	\$ 13.84	\$ 12.58	\$ 10.76	\$ 11.94	577,626,165	207,933,856	422,422,008	51,430,429	1,259,412,458	45.9%	16.5%	33.5%	4.1%	\$12.53	\$ 1.77
Oct	\$ 2.00	\$ 13.89	\$ 12.54	\$ 10.02	\$ 11.81	568,995,028	163,103,249	509,097,436	72,129,435	1,313,325,148	43.3%	12.4%	38.8%	5.5%	\$12.04	\$ 2.02
Nov	\$ 2.00	\$ 13.82	\$ 13.68	\$ 8.57	\$ 13.00	577,879,418	142,720,825	502,565,871	41,249,714	1,264,415,828	45.7%	11.3%	39.7%	3.3%	\$11.91	\$ 3.34
Dec	\$ 2.00	\$ 14.13	\$ 13.97	\$ 9.37	\$ 13.27	577,955,842	83,133,122	541,598,346	43,088,936	1,245,776,246	46.4%	6.7%	43.5%	3.5%	\$12.16	\$ 2.79
Average	\$ 2.00	\$ 13.55	\$ 12.53	\$ 9.74	\$ 11.83	559,687,016	176,672,960	371,078,956	77,988,213	1,185,427,146	47.3%	15.0%	31.0%	6.7%	\$12.08	\$ 2.34

Exhibit _____, Table 2 - B

Utilization and Statistical Uniform Blend Price

Federal Order 1033

CY 2001

	Base Zone	Class I Price	Class II Price	Class III Price	Class IV Price	Class I Pounds	Class II Pounds	Class III Pounds	Class IV Pounds	All Pounds	Class I Percent	Class II Percent	Class III Percent	Class IV Percent	Actual Blend	Producer Price Differential
Jan	\$ 2.00	\$ 15.99	\$ 12.82	\$ 9.99	\$ 12.13	588,145,544	164,669,483	578,362,778	53,992,268	1,385,170,073	42.5%	11.9%	41.8%	3.9%	\$12.54	\$ 2.55
Feb	\$ 2.00	\$ 13.94	\$ 13.43	\$ 10.27	\$ 12.70	518,605,264	81,011,195	558,457,479	37,142,265	1,195,216,203	43.4%	6.8%	46.7%	3.1%	\$12.28	\$ 2.01
Mar	\$ 2.00	\$ 14.65	\$ 14.17	\$ 11.42	\$ 13.46	592,463,468	92,306,848	625,570,509	27,719,752	1,338,060,577	44.3%	6.9%	46.8%	2.1%	\$13.24	\$ 1.82
Apr	\$ 2.00	\$ 15.44	\$ 15.10	\$ 12.06	\$ 14.41	524,283,562	96,173,951	640,501,127	45,055,936	1,306,014,576	40.1%	7.4%	49.0%	3.4%	\$13.94	\$ 1.88
May	\$ 2.00	\$ 16.21	\$ 15.72	\$ 13.83	\$ 15.04	549,295,823	109,369,791	778,890,730	35,781,463	1,473,337,807	37.3%	7.4%	52.9%	2.4%	\$15.12	\$ 1.29
Jun	\$ 2.00	\$ 16.99	\$ 16.05	\$ 15.02	\$ 15.33	509,434,647	175,416,344	803,224,558	97,603,541	1,585,679,090	32.1%	11.1%	50.7%	6.2%	\$15.97	\$ 0.95
Jul	\$ 2.00	\$ 17.34	\$ 15.96	\$ 15.46	\$ 14.81	510,543,911	241,915,764	792,785,897	106,039,454	1,651,285,026	30.9%	14.7%	48.0%	6.4%	\$16.24	\$ 0.78
Aug	\$ 2.00	\$ 17.40	\$ 15.98	\$ 15.55	\$ 15.06	571,871,676	244,461,693	670,760,833	52,525,393	1,539,609,595	37.1%	15.9%	43.6%	3.4%	\$16.54	\$ 0.99
Sep	\$ 2.00	\$ 17.56	\$ 16.24	\$ 15.90	\$ 15.59	542,241,885	200,053,399	505,969,426	74,610,426	1,322,875,136	41.0%	15.1%	38.2%	5.6%	\$16.87	\$ 0.97
Oct	\$ 2.00	\$ 17.93	\$ 13.53	\$ 14.60	\$ 12.77	592,392,973	211,702,810	565,707,354	54,881,347	1,424,684,484	41.6%	14.9%	39.7%	3.9%	\$15.03	\$ 0.43
Nov	\$ 2.00	\$ 17.76	\$ 12.78	\$ 11.31	\$ 11.97	571,431,798	199,072,089	628,486,089	49,089,768	1,448,079,744	39.5%	13.7%	43.4%	3.4%	\$13.79	\$ 2.48
Dec	\$ 2.00	\$ 13.98	\$ 12.61	\$ 11.80	\$ 11.79	561,956,012	189,264,712	700,833,846	106,678,775	1,558,633,345	36.1%	12.1%	45.0%	6.8%	\$12.64	\$ 0.84
Average	\$ 2.00	\$ 16.27	\$ 14.53	\$ 13.10	\$ 13.76	552,722,214	167,118,173	654,128,386	61,751,699	1,435,720,471	38.8%	11.5%	45.5%	4.2%	\$14.52	\$ 1.42

Exhibit _____ Table 2 - C

Utilization and Statistical Uniform Blend Price

Federal Order 1033

CY 2002

	Base Zone	Class I	Class II	Class III	Class IV	Class I	Class II	Class III	Class IV	All	Class I	Class II	Class III	Class IV	Actual	Producer
		Price	Price	Price	Price	Pounds	Pounds	Pounds	Pounds	Pounds	Percent	Percent	Percent	Percent	Blend	Differential
Jan	\$ 2.00	\$ 13.96	\$ 12.69	\$ 11.87	\$ 11.93	577,948,671	203,175,073	584,307,106	60,184,551	1,425,615,401	40.6%	14.3%	41.0%	4.2%	\$ 12.88	\$ 1.01
Feb	\$ 2.00	\$ 13.95	\$ 12.28	\$ 11.63	\$ 11.54	514,236,891	209,880,750	637,468,707	111,936,469	1,473,522,817	34.9%	14.2%	43.3%	7.6%	\$ 12.46	\$ 0.83
Mar	\$ 2.00	\$ 13.62	\$ 12.19	\$ 10.65	\$ 11.42	550,370,147	168,134,774	775,107,221	82,248,591	1,575,860,733	34.9%	10.7%	49.2%	5.2%	\$ 11.93	\$ 1.28
Apr	\$ 2.00	\$ 13.47	\$ 11.88	\$ 10.85	\$ 11.09	537,590,317	171,657,184	782,034,326	66,117,653	1,557,399,480	34.5%	11.0%	50.2%	4.2%	\$ 11.92	\$ 1.07
May	\$ 2.00	\$ 13.26	\$ 11.29	\$ 10.82	\$ 10.57	557,213,864	236,181,123	848,024,479	93,789,845	1,735,209,311	32.1%	13.6%	48.9%	5.4%	\$ 11.63	\$ 0.81
Jun	\$ 2.00	\$ 13.03	\$ 11.19	\$ 10.09	\$ 10.52	476,322,047	215,793,278	845,127,244	91,913,577	1,629,156,146	29.2%	13.2%	51.9%	5.6%	\$ 11.24	\$ 1.15
Jul	\$ 2.00	\$ 12.62	\$ 11.14	\$ 9.33	\$ 10.45	522,927,772	102,187,085	779,755,040	25,250,042	1,430,119,939	36.6%	7.1%	54.5%	1.8%	\$ 10.85	\$ 1.52
Aug	\$ 2.00	\$ 12.48	\$ 11.07	\$ 9.54	\$ 10.41	565,655,752	227,682,694	529,398,459	36,795,071	1,359,531,976	41.6%	16.7%	38.9%	2.7%	\$ 11.19	\$ 1.65
Sep	\$ 2.00	\$ 12.46	\$ 10.91	\$ 9.92	\$ 10.22	541,081,574	216,284,385	586,798,464	54,565,671	1,398,730,094	38.7%	15.5%	42.0%	3.9%	\$ 11.09	\$ 1.17
Oct	\$ 2.00	\$ 12.15	\$ 11.12	\$ 10.72	\$ 10.50	590,239,828	224,554,569	600,961,675	53,971,071	1,469,727,143	40.2%	15.3%	40.9%	3.7%	\$ 11.32	\$ 0.60
Nov	\$ 2.00	\$ 12.60	\$ 11.26	\$ 9.84	\$ 10.58	568,214,641	139,984,315	561,126,534	51,454,511	1,320,780,001	43.0%	10.6%	42.5%	3.9%	\$ 11.17	\$ 1.33
Dec	\$ 2.00	\$ 12.52	\$ 11.62	\$ 9.74	\$ 10.49	550,728,223	131,853,132	593,972,718	87,108,591	1,363,662,664	40.4%	9.7%	43.6%	6.4%	\$ 11.12	\$ 1.38
Average	\$ 2.00	\$ 13.01	\$ 11.55	\$ 10.42	\$ 10.81	546,044,144	187,280,697	677,006,831	67,944,637	1,478,276,309	37.2%	12.7%	45.6%	4.6%	\$ 11.57	\$ 1.15

Exhibit _____, Table 2 - D

Utilization and Statistical Uniform Blend Price

Federal Order 1033

CY 2003

	Base Zone	Class I	Class II	Class III	Class IV	Class I	Class II	Class III	Class IV	All	Class I	Class II	Class III	Class IV	Actual	Producer
		Price	Price	Price	Price	Pounds	Pounds	Pounds	Pounds	Pounds	Percent	Percent	Percent	Percent	Blend	Price
Jan	\$ 2.00	\$ 12.56	\$ 11.29	\$ 9.78	\$ 10.07	596,358,649	154,264,306	651,201,747	61,033,625	1,462,858,327	40.8%	10.5%	44.5%	4.2%	\$ 11.05	\$ 1.27
Feb	\$ 2.00	\$ 12.23	\$ 10.66	\$ 9.66	\$ 9.81	521,750,583	205,814,311	588,933,668	71,270,693	1,387,769,255	37.6%	14.8%	42.4%	5.1%	\$ 10.72	\$ 1.06
Mar	\$ 2.00	\$ 11.81	\$ 10.54	\$ 9.11	\$ 9.79	545,081,291	180,086,804	644,622,942	87,002,967	1,456,794,004	37.4%	12.4%	44.2%	6.0%	\$ 10.36	\$ 1.25
Apr	\$ 2.00	\$ 11.64	\$ 10.44	\$ 9.41	\$ 9.73	533,093,970	222,357,851	638,078,273	79,817,039	1,473,347,133	36.2%	15.1%	43.3%	5.4%	\$ 10.47	\$ 1.06
May	\$ 2.00	\$ 11.71	\$ 10.43	\$ 9.71	\$ 9.74	562,541,788	233,399,394	658,729,700	78,824,051	1,533,494,933	36.7%	15.2%	43.0%	5.1%	\$ 10.63	\$ 0.92
Jun	\$ 2.00	\$ 11.74	\$ 10.46	\$ 9.75	\$ 9.76	485,359,456	226,133,281	639,543,563	78,975,810	1,430,012,110	33.9%	15.8%	44.7%	5.5%	\$ 10.63	\$ 0.88
Jul	\$ 2.00	\$ 11.77	\$ 10.63	\$ 11.78	\$ 9.95	521,934,715	251,726,536	183,838,831	60,781,149	1,018,281,231	51.3%	24.7%	18.1%	6.0%	\$ 11.68	\$ (0.10)
Aug	\$ 2.00	\$ 12.97	\$ 10.81	\$ 13.80	\$ 10.14	542,569,454	245,786,394	138,100,258	81,655,595	1,008,111,701	53.8%	24.4%	13.7%	8.1%	\$ 12.60	\$ (1.20)
Sep	\$ 2.00	\$ 15.71	\$ 10.76	\$ 14.30	\$ 10.05	550,838,355	248,701,436	156,159,388	50,532,590	1,006,231,769	54.7%	24.7%	15.5%	5.0%	\$ 13.93	\$ (0.37)
Oct	\$ 2.00	\$ 16.27	\$ 10.84	\$ 14.39	\$ 10.16	585,797,116	222,376,756	213,915,911	58,090,552	1,080,180,335	54.2%	20.6%	19.8%	5.4%	\$ 14.25	\$ (0.14)
Nov	\$ 2.00	\$ 16.37	\$ 10.99	\$ 13.47	\$ 10.30	539,191,395	208,978,518	605,980,454	83,377,094	1,437,527,461	37.5%	14.5%	42.2%	5.8%	\$ 13.93	\$ 0.46
Dec	\$ 2.00	\$ 15.84	\$ 11.30	\$ 11.87	\$ 10.52	561,523,974	178,082,464	631,443,953	84,632,061	1,455,682,452	38.6%	12.2%	43.4%	5.8%	\$ 13.26	\$ 1.39
Average	\$ 2.00	\$ 13.38	\$ 10.76	\$ 11.42	\$ 10.00	545,503,396	214,809,004	479,212,391	72,999,436	1,312,524,226	42.7%	17.1%	34.6%	5.6%	\$ 11.96	\$ 0.54

Exhibit _____, Table 2 - E

Utilization and Statistical Uniform Blend Price

Federal Order 1033

CY 2004

	Base Zone	Class I	Class II	Class III	Class IV	Class I	Class II	Class III	Class IV	All	Class I	Class II	Class III	Class IV	Actual	Producer
		Price	Price	Price	Price	Pounds	Pounds	Pounds	Pounds	Pounds	Percent	Percent	Percent	Percent	Blend	Differential
Jan	\$ 2.00	\$ 13.85	\$ 11.67	\$ 11.61	\$ 10.97	584,110,063	223,127,027	648,458,725	57,412,100	1,513,107,915	38.6%	14.7%	42.9%	3.8%	\$ 12.51	\$ 0.90
Feb	\$ 2.00	\$ 13.59	\$ 12.90	\$ 11.89	\$ 12.21	511,233,751	207,301,980	642,528,289	46,777,775	1,407,841,795	36.3%	14.7%	45.6%	3.3%	\$ 12.87	\$ 0.98
Mar	\$ 2.00	\$ 13.94	\$ 14.19	\$ 14.49	\$ 14.10	577,389,945	232,325,098	448,165,471	39,498,007	1,297,378,521	44.5%	17.9%	34.5%	3.0%	\$ 14.68	\$ 0.19
Apr	\$ 2.00	\$ 15.64	\$ 15.21	\$ 19.66	\$ 14.57	544,176,824	226,531,074	44,787,307	57,786,432	873,281,637	62.3%	25.9%	5.1%	6.6%	\$ 15.88	\$ (3.78)
May	\$ 2.00	\$ 21.65	\$ 15.03	\$ 20.58	\$ 14.50	501,647,870	243,038,061	50,125,048	124,287,331	919,098,310	54.6%	26.4%	5.5%	13.5%	\$ 18.99	\$ (1.59)
Jun	\$ 2.00	\$ 23.13	\$ 14.31	\$ 17.68	\$ 13.72	473,747,665	240,827,861	727,805,504	109,918,780	1,552,299,810	30.5%	15.5%	46.9%	7.1%	\$ 18.56	\$ 0.88
Jul	\$ 2.00	\$ 19.95	\$ 14.00	\$ 14.85	\$ 13.31	520,455,927	234,623,368	652,628,835	79,678,018	1,487,386,148	35.0%	15.8%	43.9%	5.4%	\$ 16.55	\$ 1.70
Aug	\$ 2.00	\$ 16.62	\$ 13.13	\$ 14.04	\$ 12.46	534,044,221	247,268,930	689,782,009	75,051,913	1,546,147,073	34.5%	16.0%	44.6%	4.9%	\$ 14.61	\$ 0.57
Sep	\$ 2.00	\$ 15.94	\$ 13.66	\$ 14.72	\$ 13.00	556,136,714	234,879,130	484,859,096	60,603,530	1,336,478,470	41.6%	17.6%	36.3%	4.5%	\$ 15.06	\$ 0.34
Oct	\$ 2.00	\$ 16.78	\$ 13.57	\$ 14.16	\$ 12.81	553,822,166	231,700,427	681,818,031	78,436,041	1,545,776,665	35.8%	15.0%	44.1%	5.1%	\$ 14.89	\$ 0.73
Nov	\$ 2.00	\$ 16.29	\$ 14.09	\$ 14.89	\$ 13.34	562,288,579	220,798,136	639,139,516	54,501,319	1,476,727,550	38.1%	15.0%	43.3%	3.7%	\$ 15.21	\$ 0.32
Dec	\$ 2.00	\$ 16.43	\$ 13.98	\$ 16.14	\$ 13.42	573,857,672	211,046,047	131,888,663	67,592,180	984,384,562	58.3%	21.4%	13.4%	6.9%	\$ 15.52	\$ (0.62)
Average	\$ 2.00	\$ 16.98	\$ 13.81	\$ 15.39	\$ 13.20	541,075,950	229,455,595	486,832,208	70,961,952	1,328,325,705	42.5%	18.0%	33.8%	5.6%	\$ 15.44	\$ 0.05

	Class I	Class II	Cl. I + Cl. II	Cl. I + Cl. II	Class III	Class IV	Cl. III + Cl. IV	Cl. III + Cl. IV
	Pounds	Pounds	Pounds	Index	Pounds	Pounds	Pounds	Index
Jan-02	577,948,671	203,175,073	781,123,744	103%	584,307,106	60,184,551	644,491,657	176%
Feb	514,236,891	209,880,750	724,117,641	96%	637,468,707	111,936,469	749,405,176	204%
Mar	550,370,147	168,134,774	718,504,921	95%	775,107,221	82,248,591	857,355,812	234%
Apr	537,590,317	171,657,184	709,247,501	94%	782,034,326	66,117,653	848,151,979	231%
May	557,213,864	236,181,123	793,394,987	105%	848,024,479	93,789,845	941,814,324	257%
Jun	476,322,047	215,793,278	692,115,325	91%	845,127,244	91,913,577	937,040,821	255%
Jul	522,927,772	102,187,085	625,114,857	83%	779,755,040	25,250,042	805,005,082	219%
Aug	565,655,752	227,682,694	793,338,446	105%	529,398,459	36,795,071	566,193,530	154%
Sep	541,081,574	216,284,385	757,365,959	100%	586,798,464	54,565,671	641,364,135	175%
Oct	590,239,828	224,554,569	814,794,397	108%	600,961,675	53,971,071	654,932,746	178%
Nov	568,214,641	139,984,315	708,198,956	94%	561,126,534	51,454,511	612,581,045	167%
Dec	550,728,223	131,853,132	682,581,355	90%	593,972,718	87,108,591	681,081,309	186%
Jan-03	596,358,649	154,264,306	750,622,955	99%	651,201,747	61,033,625	712,235,372	194%
Feb	521,750,583	205,814,311	727,564,894	96%	588,933,668	71,270,693	660,204,361	180%
Mar	545,081,291	180,086,804	725,168,095	96%	644,622,942	87,002,967	731,625,909	199%
Apr	533,093,970	222,357,851	755,451,821	100%	638,078,273	79,817,039	717,895,312	196%
May	562,541,788	233,399,394	795,941,182	105%	658,729,700	78,824,051	737,553,751	201%
Jun	485,359,456	226,133,281	711,492,737	94%	639,543,563	78,975,810	718,519,373	196%
Jul	521,934,715	251,726,536	773,661,251	102%	183,838,831	60,781,149	244,619,980	67%
Aug	542,569,454	245,786,394	788,355,848	104%	138,100,258	81,655,595	219,755,853	60%
Sep	550,838,355	248,701,436	799,539,791	106%	156,159,388	50,532,590	206,691,978	56%
Oct	585,797,116	222,376,756	808,173,872	107%	213,915,911	58,090,552	272,006,463	74%
Nov	539,191,395	208,978,518	748,169,913	99%	605,980,454	83,377,094	689,357,548	188%
Dec	561,523,974	178,082,464	739,606,438	98%	631,443,953	84,632,061	716,076,014	195%
Jan-04	584,110,063	223,127,027	807,237,090	107%	648,458,725	57,412,100	705,870,825	192%
Feb	511,233,751	207,301,980	718,535,731	95%	642,528,289	46,777,775	689,306,064	188%
Mar	577,389,945	232,325,098	809,715,043	107%	448,165,471	39,498,007	487,663,478	133%
Apr	544,176,824	226,531,074	770,707,898	102%	44,787,307	57,786,432	102,573,739	28%
May	501,647,870	243,038,061	744,685,931	98%	50,125,048	124,287,331	174,412,379	48%
Jun	473,747,665	240,827,861	714,575,526	94%	727,805,504	109,918,780	837,724,284	228%
Jul	520,455,927	234,623,368	755,079,295	100%	652,628,835	79,678,018	732,306,853	200%
Aug	534,044,221	247,268,930	781,313,151	103%	689,782,009	75,051,913	764,833,922	208%
Sep	556,136,714	234,879,130	791,015,844	105%	484,859,096	60,603,530	545,462,626	149%
Oct	553,822,166	231,700,427	785,522,593	104%	681,818,031	78,436,041	760,254,072	207%
Nov	562,288,579	220,798,136	783,086,715	103%	639,139,516	54,501,319	693,640,835	189%
Dec	573,857,672	211,046,047	784,903,719	104%	131,888,663	67,592,180	199,480,843	54%

Exhibit _____, Table 3

Federal Order 1033

Comparison of Fluid Use Pounds and Reserve Supply Pounds, Federal Order 1033 January 2000 - December 2004

	Class I	Class II	Cl. I + Cl. II	Cl. I + Cl. II	Class III	Class IV	Cl. III + Cl. IV	Cl. III + Cl. IV
	Pounds	Pounds	Pounds	Index	Pounds	Pounds	Pounds	Index
Jan-00	584,035,392	172,646,565	756,681,957	100%	252,858,950	114,147,156	367,006,106	100%
Feb	549,647,785	187,566,603	737,214,388	97%	250,519,074	114,147,156	364,666,230	99%
Mar	586,081,597	223,959,791	810,041,388	107%	277,772,755	77,863,850	355,636,605	97%
Apr	523,072,595	177,282,846	700,355,441	93%	295,612,331	108,829,415	404,441,746	110%
May	556,332,894	178,128,237	734,461,131	97%	308,236,353	90,990,868	399,227,221	109%
Jun	521,550,228	176,612,370	698,162,598	92%	340,348,559	75,949,692	416,298,251	113%
Jul	514,292,282	212,421,440	726,713,722	96%	386,606,936	99,997,881	486,604,817	133%
Aug	578,774,964	194,566,618	773,341,582	102%	365,308,855	46,034,028	411,342,883	112%
Sep	577,626,165	207,933,856	785,560,021	104%	422,422,008	51,430,429	473,852,437	129%
Oct	568,995,028	163,103,249	732,098,277	97%	509,097,436	72,129,435	581,226,871	158%
Nov	577,879,418	142,720,825	720,600,243	95%	502,565,871	41,249,714	543,815,585	148%
Dec	577,955,842	83,133,122	661,088,964	87%	541,598,346	43,088,936	584,687,282	159%
Jan-01	588,145,544	164,669,483	752,815,027	99%	578,362,778	53,992,268	632,355,046	172%
Feb	518,605,264	81,011,195	599,616,459	79%	558,457,479	37,142,265	595,599,744	162%
Mar	592,463,468	92,306,848	684,770,316	90%	625,570,509	27,719,752	653,290,261	178%
Apr	524,283,562	96,173,951	620,457,513	82%	640,501,127	45,055,936	685,557,063	187%
May	549,295,823	109,369,791	658,665,614	87%	778,890,730	35,781,463	814,672,193	222%
Jun	509,434,647	175,416,344	684,850,991	91%	803,224,558	97,603,541	900,828,099	245%
Jul	510,543,911	241,915,764	752,459,675	99%	792,785,897	106,039,454	898,825,351	245%
Aug	571,871,676	244,461,693	816,333,369	108%	670,750,833	52,525,393	723,276,226	197%
Sep	542,241,885	200,053,399	742,295,284	98%	505,969,426	74,610,426	580,579,852	158%
Oct	592,392,973	211,702,810	804,095,783	106%	565,707,354	54,881,347	620,588,701	169%
Nov	571,431,798	199,072,089	770,503,887	102%	628,486,089	49,089,768	677,575,857	185%
Dec	561,956,012	189,264,712	751,220,724	99%	700,833,846	106,578,775	807,412,621	220%

Exhibit _____ Table 4A
 Comparison of Relative Return Between Markets
 Federal Order 1005 & Federal Order 1033
 CY 2000

2000	Jan	Feb	Mar	Apr	May	Jun	Jul	Aug	Sep	Oct	Nov	Dec	Avg
Blend Price - F.O. 5	\$12.82	\$12.74	\$12.83	\$12.88	\$13.40	\$13.78	\$14.23	\$14.15	\$14.16	\$13.89	\$14.14	\$14.51	\$13.63
Loc Adj @ Winchester, KY	-\$0.90	-\$0.90	-\$0.90	-\$0.90	-\$0.90	-\$0.90	-\$0.90	-\$0.90	-\$0.90	-\$0.90	-\$0.90	-\$0.90	-\$0.90
F.O. 5 Blend @ Location	\$11.92	\$11.84	\$11.93	\$11.98	\$12.50	\$12.88	\$13.33	\$13.25	\$13.26	\$12.99	\$13.24	\$13.61	\$12.73
Freight from Minster, OH	\$0.99	\$0.99	\$0.99	\$0.99	\$0.99	\$0.99	\$0.99	\$0.99	\$0.99	\$0.99	\$0.99	\$0.99	\$0.99
Net Return	\$10.93	\$10.85	\$10.94	\$10.99	\$11.51	\$11.89	\$12.34	\$12.26	\$12.27	\$12.00	\$12.25	\$12.62	\$11.74
2000	Jan	Feb	Mar	Apr	May	Jun	Jul	Aug	Sep	Oct	Nov	Dec	Avg
Blend Price - F.O. 33	\$11.23	\$11.00	\$10.91	\$10.84	\$10.96	\$11.16	\$11.95	\$11.61	\$11.97	\$11.40	\$10.85	\$11.38	\$11.27
Loc Adj @ Cincinnati, OH	\$0.20	\$0.20	\$0.20	\$0.20	\$0.20	\$0.20	\$0.20	\$0.20	\$0.20	\$0.20	\$0.20	\$0.20	\$0.20
F.O. 33 Blend @ Location	\$11.43	\$11.20	\$11.11	\$11.04	\$11.16	\$11.36	\$12.15	\$11.81	\$12.17	\$11.60	\$11.05	\$11.58	\$11.47
Freight from Minster, OH	\$0.81	\$0.81	\$0.81	\$0.81	\$0.81	\$0.81	\$0.81	\$0.81	\$0.81	\$0.81	\$0.81	\$0.81	\$0.81
Net Return	\$10.62	\$10.39	\$10.30	\$10.23	\$10.35	\$10.55	\$11.34	\$11.00	\$11.36	\$10.79	\$10.24	\$10.77	\$10.67
FO 5 Net Gain Winchester, KY vs Cincinnati, OH	\$0.31	\$0.46	\$0.64	\$0.76	\$1.16	\$1.34	\$1.00	\$1.26	\$0.91	\$1.21	\$2.01	\$1.85	\$1.08
Freight return is computed by multiplying road miles by \$2.20 rate per loaded mile and dividing by a 48,000 pound load.													
Minster	Cincinnati OH 176	Winchester KY 215											
Rate per Loaded Mile	2.2												
Hundredweights	480												
Pounds	48,000												

Exhibit _____ Table 4B
Comparison of Relative Return Between Markets
Federal Order 1005 & Federal Order 1033
CY 2001

2001	Jan	Feb	Mar	Apr	May	Jun	Jul	Aug	Sep	Oct	Nov	Dec	Avg
Blend Price - F.O. 5	\$15.00	\$14.48	\$15.16	\$15.84	\$16.77	\$17.33	\$17.61	\$18.01	\$18.17	\$16.73	\$16.76	\$14.16	\$16.34
Loc Adj @ Winchester, KY	-\$0.90	-\$0.90	-\$0.90	-\$0.90	-\$0.90	-\$0.90	-\$0.90	-\$0.90	-\$0.90	-\$0.90	-\$0.90	-\$0.90	-\$0.90
F.O. 5 Blend @ Location	\$14.10	\$13.58	\$14.26	\$14.94	\$15.87	\$16.43	\$16.71	\$17.11	\$17.27	\$15.83	\$15.86	\$13.26	\$15.44
Freight from Minster, OH	\$0.99	\$0.99	\$0.99	\$0.99	\$0.99	\$0.99	\$0.99	\$0.99	\$0.99	\$0.99	\$0.99	\$0.99	\$0.99
Net Return	\$13.11	\$12.59	\$13.27	\$13.95	\$14.88	\$15.44	\$15.72	\$16.12	\$16.28	\$14.84	\$14.87	\$12.27	\$14.45
2001	Jan	Feb	Mar	Apr	May	Jun	Jul	Aug	Sep	Oct	Nov	Dec	Avg
Blend Price - F.O. 33	\$12.54	\$12.28	\$13.24	\$13.94	\$15.12	\$15.97	\$16.24	\$16.54	\$16.87	\$15.03	\$13.79	\$12.64	\$14.52
Loc Adj @ Cincinnati, OH	\$0.20	\$0.20	\$0.20	\$0.20	\$0.20	\$0.20	\$0.20	\$0.20	\$0.20	\$0.20	\$0.20	\$0.20	\$0.20
F.O. 33 Blend @ Location	\$12.74	\$12.48	\$13.44	\$14.14	\$15.32	\$16.17	\$16.44	\$16.74	\$17.07	\$15.23	\$13.99	\$12.84	\$14.72
Freight from Minster, OH	\$0.81	\$0.81	\$0.81	\$0.81	\$0.81	\$0.81	\$0.81	\$0.81	\$0.81	\$0.81	\$0.81	\$0.81	\$0.81
Net Return	\$11.93	\$11.67	\$12.63	\$13.33	\$14.51	\$15.36	\$15.63	\$15.93	\$16.26	\$14.42	\$13.18	\$12.03	\$13.91
FO 5 Net Gain Winchester, KY vs Cincinnati, OH	\$1.18	\$0.92	\$0.64	\$0.62	\$0.37	\$0.08	\$0.09	\$0.19	\$0.02	\$0.42	\$1.69	\$0.24	\$0.54
Freight return is computed by multiplying road miles by \$2.20 rate per loaded mile and dividing by a 48,000 pound load.													
Minster	Cincinnati OH	Winchester KY											
	176	215											
Rate per Loaded Mile	2.2												
Hundredweights	480												
Pounds	48,000												

Exhibit _____ Table 4C
**Comparison of Relative Return Between Markets
 Federal Order 1005 & Federal Order 1033
 CY 2002**

2002	Jan	Feb	Mar	Apr	May	Jun	Jul	Aug	Sep	Oct	Nov	Dec	Avg
Blend Price - F.O. 5	\$14.41	\$14.04	\$13.60	\$13.43	\$13.09	\$12.83	\$12.88	\$12.87	\$12.76	\$12.91	\$13.06	\$12.96	\$13.24
Loc Adj @ Winchester, KY	-\$0.90	-\$0.90	-\$0.90	-\$0.90	-\$0.90	-\$0.90	-\$0.90	-\$0.90	-\$0.90	-\$0.90	-\$0.90	-\$0.90	-\$0.90
F.O. 5 Blend @ Location	\$13.51	\$13.14	\$12.70	\$12.53	\$12.19	\$11.93	\$11.98	\$11.97	\$11.86	\$12.01	\$12.16	\$12.06	\$12.34
Freight from Minster, OH	\$0.99	\$0.99	\$0.99	\$0.99	\$0.99	\$0.99	\$0.99	\$0.99	\$0.99	\$0.99	\$0.99	\$0.99	\$0.99
Net Return	\$12.52	\$12.15	\$11.71	\$11.54	\$11.20	\$10.94	\$10.99	\$10.98	\$10.87	\$11.02	\$11.17	\$11.07	\$11.35
2002	Jan	Feb	Mar	Apr	May	Jun	Jul	Aug	Sep	Oct	Nov	Dec	Avg
Blend Price - F.O. 33	\$12.88	\$12.46	\$11.93	\$11.92	\$11.63	\$11.24	\$10.85	\$11.19	\$11.09	\$11.32	\$11.17	\$11.12	\$11.57
Loc Adj @ Cincinnati, OH	\$0.20	\$0.20	\$0.20	\$0.20	\$0.20	\$0.20	\$0.20	\$0.20	\$0.20	\$0.20	\$0.20	\$0.20	\$0.20
F.O. 33 Blend @ Location	\$13.08	\$12.66	\$12.13	\$12.12	\$11.83	\$11.44	\$11.05	\$11.39	\$11.29	\$11.52	\$11.37	\$11.32	\$11.77
Freight from Minster, OH	\$0.81	\$0.81	\$0.81	\$0.81	\$0.81	\$0.81	\$0.81	\$0.81	\$0.81	\$0.81	\$0.81	\$0.81	\$0.81
Net Return	\$12.27	\$11.85	\$11.32	\$11.31	\$11.02	\$10.63	\$10.24	\$10.58	\$10.48	\$10.71	\$10.56	\$10.51	\$10.96
FO 5 Net Gain Winchester, KY vs Cincinnati, OH	\$0.25	\$0.30	\$0.39	\$0.23	\$0.18	\$0.31	\$0.75	\$0.40	\$0.39	\$0.31	\$0.61	\$0.56	\$0.39
Freight return is computed by multiplying road miles by \$2.20 rate per loaded mile and dividing by a 48,000 pound load.													
Minster	Cincinnati OH 176	Winchester KY 215											
Rate per Loaded Mile	2.2												
Hundredweights	480												
Pounds	48,000												

Exhibit _____ Table 4D
 Comparison of Relative Return Between Markets
 Federal Order 1005 & Federal Order 1033
 CY 2003

2003	Jan	Feb	Mar	Apr	May	Jun	Jul	Aug	Sep	Oct	Nov	Dec	Avg
Blend Price - F.O. 5	\$12.94	\$12.52	\$12.07	\$12.04	\$12.11	\$12.04	\$12.49	\$13.52	\$15.57	\$16.09	\$15.76	\$15.48	\$13.55
Loc Adj @ Winchester, KY	-\$0.90	-\$0.90	-\$0.90	-\$0.90	-\$0.90	-\$0.90	-\$0.90	-\$0.90	-\$0.90	-\$0.90	-\$0.90	-\$0.90	-\$0.90
F.O. 5 Blend @ Location	\$12.04	\$11.62	\$11.17	\$11.14	\$11.21	\$11.14	\$11.59	\$12.62	\$14.67	\$15.19	\$14.86	\$14.58	\$12.65
Freight from Minster, OH	\$0.99	\$0.99	\$0.99	\$0.99	\$0.99	\$0.99	\$0.99	\$0.99	\$0.99	\$0.99	\$0.99	\$0.99	\$0.99
Net Return	\$11.05	\$10.63	\$10.18	\$10.15	\$10.22	\$10.15	\$10.60	\$11.63	\$13.68	\$14.20	\$13.87	\$13.59	\$11.67
2003	Jan	Feb	Mar	Apr	May	Jun	Jul	Aug	Sep	Oct	Nov	Dec	Avg
Blend Price - F.O. 33	\$11.05	\$10.72	\$10.36	\$10.47	\$10.63	\$10.63	\$11.68	\$12.60	\$13.93	\$14.25	\$13.93	\$13.26	\$11.96
Loc Adj @ Cincinnati, OH	\$0.20	\$0.20	\$0.20	\$0.20	\$0.20	\$0.20	\$0.20	\$0.20	\$0.20	\$0.20	\$0.20	\$0.20	\$0.20
F.O. 33 Blend @ Location	\$11.25	\$10.92	\$10.56	\$10.67	\$10.83	\$10.83	\$11.88	\$12.80	\$14.13	\$14.45	\$14.13	\$13.46	\$12.16
Freight from Minster, OH	\$0.81	\$0.81	\$0.81	\$0.81	\$0.81	\$0.81	\$0.81	\$0.81	\$0.81	\$0.81	\$0.81	\$0.81	\$0.81
Net Return	\$10.44	\$10.11	\$9.75	\$9.86	\$10.02	\$10.02	\$11.07	\$11.99	\$13.32	\$13.64	\$13.32	\$12.65	\$11.35
FO 5 Net Gain Winchester, KY vs Cincinnati, OH	\$0.61	\$0.52	\$0.43	\$0.29	\$0.20	\$0.13	-\$0.47	-\$0.36	\$0.36	\$0.56	\$0.55	\$0.94	\$0.31
Freight return is computed by multiplying road miles by				\$2.20 rate per loaded mile and dividing by a				48,000 pound load.					
Minster	Cincinnati OH	Winchester KY											
	176	215											
Rate per Loaded Mile	2.2												
Hundredweights	480												
Pounds	48,000												

Exhibit _____ Table 4E
**Comparison of Relative Return Between Markets
 Federal Order 1005 & Federal Order 1033
 CY 2004**

2004	Jan	Feb	Mar	Apr	May	Jun	Jul	Aug	Sep	Oct	Nov	Dec	Avg
Blend Price - F.O. 5	\$14.25	\$14.49	\$15.80	\$16.76	\$20.18	\$20.54	\$18.94	\$16.16	\$16.52	\$16.69	\$16.78	\$16.98	\$17.01
Loc Adj @ Winchester, KY	-\$0.90	-\$0.90	-\$0.90	-\$0.90	-\$0.90	-\$0.90	-\$0.90	-\$0.90	-\$0.90	-\$0.90	-\$0.90	-\$0.90	-\$0.90
F.O. 5 Blend @ Location	\$13.35	\$13.59	\$14.90	\$15.86	\$19.28	\$19.64	\$18.04	\$15.26	\$15.62	\$15.79	\$15.88	\$16.08	\$16.11
Freight from Minster, OH	\$0.99	\$0.99	\$0.99	\$0.99	\$0.99	\$0.99	\$0.99	\$0.99	\$0.99	\$0.99	\$0.99	\$0.99	\$0.99
Net Return	\$12.36	\$12.60	\$13.91	\$14.87	\$18.29	\$18.65	\$17.05	\$14.27	\$14.63	\$14.80	\$14.89	\$15.09	\$15.12
2004	Jan	Feb	Mar	Apr	May	Jun	Jul	Aug	Sep	Oct	Nov	Dec	Avg
Blend Price - F.O. 33	\$12.51	\$12.87	\$14.68	\$15.88	\$18.99	\$18.56	\$16.55	\$14.61	\$15.06	\$14.89	\$15.21	\$15.52	\$15.44
Loc Adj @ Cincinnati, OH	\$0.20	\$0.20	\$0.20	\$0.20	\$0.20	\$0.20	\$0.20	\$0.20	\$0.20	\$0.20	\$0.20	\$0.20	\$0.20
F.O. 33 Blend @ Location	\$12.71	\$13.07	\$14.88	\$16.08	\$19.19	\$18.76	\$16.75	\$14.81	\$15.26	\$15.09	\$15.41	\$15.72	\$15.64
Freight from Minster, OH	\$0.81	\$0.81	\$0.81	\$0.81	\$0.81	\$0.81	\$0.81	\$0.81	\$0.81	\$0.81	\$0.81	\$0.81	\$0.81
Net Return	\$11.90	\$12.26	\$14.07	\$15.27	\$18.38	\$17.95	\$15.94	\$14.00	\$14.45	\$14.28	\$14.60	\$14.91	\$14.84
FO 5 Net Gain Winchester, KY vs Cincinnati, OH	\$0.46	\$0.34	-\$0.16	-\$0.40	-\$0.09	\$0.70	\$1.11	\$0.27	\$0.18	\$0.52	\$0.29	\$0.18	\$0.28
Freight return is computed by multiplying road miles by \$2.20 rate per loaded mile and dividing by a 48,000 pound load.													
Minster	Cincinnati OH 176	Winchester KY 215											
Rate per Loaded Mile	2.2												
Hundredweights	480												
Pounds	48,000												

Exhibit _____ Table 5

Summary of Supplemental Milk Purchases Dairy Farmers of America

October 2004

STATE DELIVERED FROM:	STATE DELIVERED TO:	INDIANA	OHIO	PENNSYLVANIA	SHIPPING STATE TOTAL
ILLINOIS	Total Pounds		1,649,000		1,649,000
	Average Miles		593		593
	Wted Ave Per Loaded Mile		\$ 2.02		\$ 2.02
MICHIGAN	Total Pounds		288,568	389,172	677,740
	Average Miles		240	316	278
	Wted Ave Per Loaded Mile		\$ 2.10	\$ 2.61	\$ 2.35
WISCONSIN & MINNESOTA	Total Pounds	15,733,902	3,405,965	145,500	19,285,367
	Average Miles	332	511	576	369
	Wted Ave Per Loaded Mile	\$ 2.54	\$ 2.61	\$ 2.53	\$ 2.55
RECEIVING STATE TOTAL		15,733,902	5,343,533	534,672	21,612,107
Average Miles		332	516	489	381
Average Per Loaded Mile		\$ 2.54	\$ 2.37	\$ 2.55	\$ 2.51

Exhibit ____ Table 6
 Summary of Haul Invoices
 Fall/Winter 2004/05

Family Daries / 10/11/04		Haul Bill With		Avg	
From	To	Fuel Sur @ 8%	Loads	Miles	Per Loaded Mile
Wisconsin	Indiana	\$ 20,669.61	26	310	\$ 2.56

Family Daries / 12/13/04		Haul Bill With		Avg	
From	To	Fuel Sur @ 12%	Loads	Miles	Per Loaded Mile
Wisconsin	Indiana	\$ 23,581.63	26	356	\$ 2.55

MLT / 02/17/05		Haul Bill With		Avg	
From	To	Fuel Sur @ 10%	Loads	Miles	Per Loaded Mile
Indiana	Ohio / PA	\$ 3,480.40	5	275	\$ 2.53

Juda WI / Indiana 10/01/04		Haul Bill With		Avg	
From	To	Fuel Sur @ 0%	Loads	Miles	Per Loaded Mile
Wisconsin	Indiana	\$ 13,177.79	23	268	\$ 2.13

Juda WI / Indiana 11/01/04		Haul Bill With		Avg	
From	To	Fuel Sur @ 0%	Loads	Miles	Per Loaded Mile
Wisconsin	Indiana	\$ 12,275.19	22	250	\$ 2.21

Poch 10/19/04		Haul Bill With		Avg	
From	To	Fuel Sur @ 0%	Loads	Miles	Per Loaded Mile
Wisconsin	Indiana	\$ 3,677.93	5	296	\$ 2.49

Caledonia 10/15/04		Haul Bill With		Avg	
From	To	Fuel Sur @ 8%	Loads	Miles	Per Loaded Mile
Wisconsin	Indiana	\$ 3,078.00	3	441	\$ 2.33

Caledonia 11/15/04		Haul Bill With		Avg	
From	To	Fuel Sur @ 8%	Loads	Miles	Per Loaded Mile
Wisconsin	Indiana	\$ 8,515.80	7	512	\$ 2.38



Caledonia Haulers, Inc.

P.O. Box 31 - Caledonia, MN 55921
 Phone: 507-735-9600 • 800-375-4728
 Office Fax: 507-735-9415

PRO NUMBER 32986	INVOICE NUMBER 039498
ISSUE DATE 10/15/04	DATE RECEIVED 10/7/04
DATE RECEIVED 10/8/04	QUANTITY 475
UNIT NUMBER 204-735	QUANTITY 74

C A L E D O N I A

MIDWEST MARKETING AGENCY
 8904 BASH ST. SUITE M
 INDIANAPOLIS, IN 46256

S H I P P E R
C O N S

CALEDONIA MILK RECEIVING
 HWY 44
 CALEDONIA, MN 55921
 DEAN FOODS-ROCHESTER
 1700 NORTH OLD U.S. 31
 ROCHESTER, IN 46975

DESCRIPTION OF ARTICLES OR COMMODITY	WEIGHT	RATE	CHARGES
CRADLE MILK	30		0.5000
GENERAL			0.5000
HOME SURCHARGE	30		0.5000
STOP CHARGES			0.5000
		TOTAL	1.0000

40113 TC
 10/20/04

PLEASE REMIT TO:
 Caledonia Haulers, Inc.
 P.O. Box 31
 Caledonia, MN 55921

TOTAL 1.0000

OK OK 10/20/04



Caledonia Haulers, Inc.

P.O. Box 31 • Caledonia, MN 55921
Phone: 507-725-9400 • 507-325-0726
Office Fax: 507-725-9415

33288	39502		
10/15/04	10/12/04	10/13/04	424
199-841			74

MIDEAST MARKETING AGENCY
8904 BASH ST. SUITE M
INDIANAPOLIS, IN 46256

SHIPPER
CONSIGNEE

CALEDONIA MILK RECEIVING
HWY 44
CALEDONIA, MN 55921
DFA-GOSHEN
1110 S. 9TH ST.
GOSHEN, IN 46526

DESCRIPTION OF ARTICLES OR COMMODITY	WEIGHT	RATE	CHARGES
GRADE 1 MILK	5000 LBS	15.00/100 LBS	
IN TRANSIT			
FUEL SURCHARGE			
			40113 PC
			10/20/04
			10/20/04
TOTAL			61,049.75

PLEASE
REMIT
TO: Caledonia Haulers, Inc.
P.O. Box 31
Caledonia, MN 55921

OK 10/21/04



Caledonia Haulers, Inc.

P.O. Box 31 - Caledonia, MN 55921
Phone: 507-725-9000 • 800-925-4728
Office Fax: 507-725-9015

PRO NUMBER 32905	SHIPPER NUMBER 39496		
INVOICE DATE 10/12/04	DATE LOADED 10/3/04	DATE DELIVERED 10/4/04	QUANTITY 424
UNIT NUMBER 200 - 827	CUSTOMER NUMBER 74		

MIDEAST MARKETING AGENCY
8904 BASH ST. SUITE M
INDIANAPOLIS, IN 46256

CALEDONIA MILK RECEIVING
HWY 44
CALEDONIA, MN 55921

DFA-GOSHEN
1110 S. 9TH ST.
GOSHEN, IN 46526

DESCRIPTION OF ARTICLES OR COMMODITY	WEIGHT	RATE	CHARGES
CALEDONIA MILK	280 TB	\$50.00	
LINE HOURS	\$950.00		
GEL SURCHARGE			11.00
TOTAL			1026.00

40113
10/20/04
1026.00

PLEASE REMIT TO:
Caledonia Haulers, Inc.
P.O. Box 31
Caledonia, MN 55921

TOTAL

OK [signature] 10/21/04

... copy - Carrier.



Caledonia Haulers, Inc.

P.O. Box 31 • Caledonia, MN 55921
Phone: 507-725-9000 • 800-325-4728
Office Fax: 507-725-9015

PRO NUMBER 33909	SHIPPER NUMBER 039509		
INVOICE DATE 10/31/04	DATE LOADED 10/25/04	DATE DELIVERED 10/26/04	MILES 516
UNIT NUMBER 196-732	CUSTOMER NUMBER 74		

BILL TO

MIDEAST MARKETING AGENCY
8904 BASH ST. SUITE M
INDIANAPOLIS, IN 46256

SHIPPER
CONS

CALEDONIA MILK RECEIVING
HWY 44
CALEDONIA, MN 55921
PRAIRIE FARMS-EASTSIDE 2
722 BROADWAY ST
ANDERSON, IN 46012

DESCRIPTION OF ARTICLES OR COMMODITY	WEIGHT	RATE	CHARGES
GRADE A MILK	50,000 lbs	\$135.00 / ton	\$6,750.00
LINE HAUL			\$136.20
FUEL SURCHARGE			

40113 OK
11/9/04

PLEASE REMIT TO:
Caledonia Haulers, Inc.
P.O. Box 31
Caledonia, MN 55921

TOTAL **\$1,271.20**



Caledonia Haulers, Inc.

P.O. Box 31 • Caledonia, MN 55921
Phone: 507-725-9000 • 800-325-4728
Office Fax: 507-725-9015

PRO NUMBER 33908	SHIPPER NUMBER 039508		
INVOICE DATE 10/31/04	DATE LOADED 10/24/04	DATE DELIVERED 10/25/04	MILES 516
UNIT NUMBER 226 - 730	CUSTOMER NUMBER 74		

BILL TO

MIDEAST MARKETING AGENCY
8904 BASH ST. SUITE M
INDIANAPOLIS, IN 46256

SHIPPER
COND'S

CALEDONIA MILK RECEIVING
HWY 44
CALEDONIA, MN 55921
PRAIRIE FARMS-EASTSIDE 2
722 BROADWAY ST
ANDERSON, IN 46012

DESCRIPTION OF ARTICLES OR COMMODITY	WEIGHT	RATE	CHARGES
GRADE A MILK	50,100 lbs.	3.00 cwt	\$1,503.00
LINE HAUL		1.3500 / ton	\$1,350.00
FUEL SURCHARGE	51,350.00	1.20	\$6,162.00
			136.20
			401372 11/9/04 OKAY 11/10/04 \$1271.20
PLEASE REMIT TO: Caledonia Haulers, Inc. P.O. Box 31 Caledonia, MN 55921			TOTAL \$1,271.20 \$1,276.88



Caledonia Haulers, Inc.

P.O. Box 31 • Caledonia, MN 55921
Phone: 507-725-9000 • 800-325-4728
Office Fax: 507-725-9015

PRO NUMBER 33614	SHIPPER NUMBER 39505		
INVOICE DATE 10/27/04	DATE LOADED 10/19/04	DATE DELIVERED 10/20/04	MILES 516
UNIT NUMBER 256 - 751	CUSTOMER NUMBER 74		

BILL TO

MIDEAST MARKETING AGENCY
8904 BASH ST. SUITE M
INDIANAPOLIS, IN 46256

PREPARED BY

CALEDONIA MILK RECEIVING
HWY 44
CALEDONIA, MN 55921

PRAIRIE FARMS-EASTSIDE 2
722 BROADWAY ST
ANDERSON, IN 46012

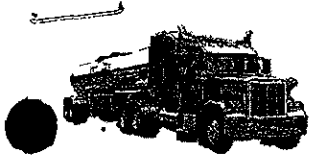
DESCRIPTION OF ARTICLES OR COMMODITY	WEIGHT	RATE	CHARGES
GRADE A MILK	30,560 lbs	0.0665 / lb	\$2,032.00
LINE HAUL			\$1,366.20
FUEL SURCHARGE			

40113 TC OK
10/29/04 11/3/04

PLEASE REMIT TO:
Caledonia Haulers, Inc.
P.O. Box 31
Caledonia, MN 55921

TOTAL

\$1,271.20



Caledonia Haulers, Inc.

P.O. Box 31 • Caledonia, MN 55921
Phone: 507-725-9000 • 800-325-4726
Office Fax: 507-725-9015

BRO NUMBER 33784		SHIPPER NUMBER 39506	
INVOICE DATE 10/27/04	DATE LOADED 10/21/04	DATE DELIVERED 10/22/04	MILES 516
UNIT NUMBER 267-811		CUSTOMER NUMBER 74	

B
I
L
L
T
O

MIDEAST MARKETING AGENCY
8904 BASH ST. SUITE M
INDIANAPOLIS, IN 46256

S
H
I
P
P
E
R

C
O
N
S

CALEDONIA MILK RECEIVING
HWY 44
CALEDONIA, MN 55921

PRAIRIE FARMS-EASTSIDE 2
722 BROADWAY ST
ANDERSON, IN 46012

DESCRIPTION OF ARTICLES OR COMMODITY	WEIGHT	RATE	CHARGES
GRADE A MILK	43,620 lbs		
LINE HADLE		\$1.35/100 lbs	\$585.00
FUEL SURCHARGE		\$2.00 / %	\$872.20

4013 PC OK 11/3/04
10/29/04 as

PLEASE
REMIT
TO: Caledonia Haulers, Inc.
P.O. Box 31
Caledonia, MN 55921

TOTAL **\$1,271.20**



Caledonia Haulers, Inc.

P.O. Box 31 • Caledonia, MN 55921
 Phone: 507-725-9000 • 800-325-4728
 Office Fax: 507-725-9015

PRO NUMBER	SHIPPER NUMBER		
33291	39503		
INVOICE DATE	DATE LOADED	DATE DELIVERED	MILES
10/19/04	10/13/04	10/14/04	516
UNIT NUMBER		CUSTOMER NUMBER	
253 - 725		74	

B I L L T O

MIDEAST MARKETING AGENCY
 8904 BASH ST. SUITE M
 INDIANAPOLIS, IN 46256

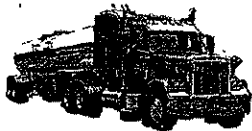
S H I P P E R C O N S

CALEDONIA MILK RECEIVING
 HWY 44
 CALEDONIA, MN 55921
 PRAIRIE FARMS-EASTSIDE 2
 722 BROADWAY ST
 ANDERSON, IN 46012

DESCRIPTION OF ARTICLES OR COMMODITY	WEIGHT	RATE	CHARGES
GRADE A MILK	29,340 lbs	\$1.2500 / cwt	\$3667.50
FUEL SURCHARGE		\$0.20 / cwt	\$5868.00
			36.20
		TOTAL	1271.20

40113 OC
10/25/04
OK 10/27/04
~~51,254.18~~

PLEASE REMIT TO:
Caledonia Haulers, Inc.
 P.O. Box 31
 Caledonia, MN 55921



Caledonia Haulers, Inc.

P.O. Box 31 • Caledonia, MN 55921
 Phone: 507-725-9000 • 800-325-4728
 Office Fax: 507-725-9015

PRO NUMBER 33289	SHIPPER NUMBER 039500		
INVOICE DATE 10/19/04	DATE LOADED 10/12/04	DATE DELIVERED 10/13/04	MILES 516
CAV NUMBER 212-747	CUSTOMER NUMBER 74		

SHIPPER
CONS

CALEDONIA MILK RECEIVING
 HWY 44
 CALEDONIA, MN 55921
 PRAIRIE FARMS-EASTSIDE 2
 722 BROADWAY ST
 ANDERSON, IN 46012

BILL TO

MIDEAST MARKETING AGENCY
 8904 BASH ST. SUITE M
 INDIANAPOLIS, IN 46256

DESCRIPTION OF ARTICLES OR COMMODITY	WEIGHT	RATE	CHARGES
GRADE A MILK	49260/136	1.5500/1111	\$7655.00
LINE HAUL		10.500/113	5272.20
FUEL SURCHARGE	\$1.135/00		36.20
		401300 10/25/04	OK 10/27/04 1291.20
		TOTAL	\$1254.18

PLEASE REMIT TO:
 Caledonia Haulers, Inc.
 P.O. Box 31
 Caledonia, MN 55921



Caledonia Haulers, Inc.

P.O. Box 31 • Caledonia, MN 55921
 Phone: 507-725-9000 • 800-325-4728
 Office Fax: 507-725-9015

PRO NUMBER 34014	SHIPPER NUMBER 039510		
INVOICE DATE 10/29/04	DATE LOADED 10/27/04	DATE DELIVERED 10/28/04	MILES 488
UNIT NUMBER 246-841		CUSTOMER NUMBER 74	

BILL TO

MIDEAST MARKETING AGENCY
 8904 BASH ST. SUITE M
 INDIANAPOLIS, IN 46256

SHIPPER
CONS.

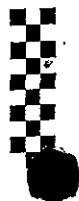
CALEDONIA MILK RECEIVING
 HWY 44
 CALEDONIA, MN 55921
 CROSSROAD FARMS DAIRY
 400 SOUTH SHORTRIDGE
 INDIANAPOLIS, IN 46219

DESCRIPTION OF ARTICLES OR COMMODITY	WEIGHT	RATE	CHARGES
GRADE A MILK	283,300 LBS	\$1.07500 / lb	\$304,725.00
BIND FUEL			
FUEL SURCHARGE	51,075.00	12.5%	63,843.75
			1,291.00
TOTAL			\$1,204.00

40113 PC
 11/3/04
 OK
 Dec 11/3/04

PLEASE REMIT TO:
Caledonia Haulers, Inc.
 P.O. Box 31
 Caledonia, MN 55921

CROSSROAD FARMS DAIRY
 400 SOUTH SHORTRIDGE RD. • P.O. BOX 50409
 INDIANAPOLIS, IND. 46219



MLT INC.
1841 GOVER PARKWAY
MT. PLEASANT, MI 48858
888-528-4MLT

INVOICE

31706

DMS

DAIRY FARMERS OF AMERICA
3737 Embassy Parkway
P.O. Box 5530
Fairlawn, OH 44334

CONTRACT	DATE	TERMS	TOTAL
----------	------	-------	-------

DFA 02/17/05 Net 30

DESCRIPTION	CHARGE
-------------	--------

1 SHARPS-GO	GOSHEN IN TO SHARPSVILLE PA #G-2033 8009-0729 2/4/05	700.00	700.00
1 FSC	10%	70.00	70.00
1 SHARPS-GO	GOSHEN IN TO SHARPSVILLE PA #G-2057 8009-0749 2/10/05	700.00	700.00
1 FSC	10%	70.00	70.00
1 SHARPS-GO	GOSHEN IN TO SHARPSVILLE PA #G-2058 8009-0748 2/10/05	700.00	700.00
1 FSC	10%	70.00	70.00

Invoice subtotal 2310.00

Invoice total 2310.00

306
AC
3/1/05

MAR 1 2005

7876-670-230

AC
3/1/05

QTY	DESCRIPTION	UNIT PRICE	TOTAL
1	NEWARK2	531.00	531.00
1	FSC	53.10	53.10
1	NEWARK2	531.00	531.00
1	FSC	53.10	53.10
1	NEWARK2	531.00	531.00
1	FSC	53.10	53.10
	GOSHEN IN TO NEWARK OH		
	#G-2047 8009-0744 2/8/05		
	10%		
	GOSHEN IN TO NEWARK OH		
	#G-2048 8009-0745 2/8/05		
	10%		
	Invoice subtotal		1168.20
	Invoice total		1168.20

TERMS	DATE	TERMS	TERMS
Net 30	02/17/05	DFA	

DAIRY FARMERS OF AMERICA
 3737 Embassy Parkway
 P.O. Box 5530
 Fairlawn, OH 44334

MLT INC.
 1841 GOVER PARKWAY
 MT. PLEASANT, MI 48858
 988-528-4MLT



INVOICE

31707



Dairy Farmers of America
3737 Embassy Parkway
PO Box 5530
Fairland, OH 44334-0530

December 13, 2004

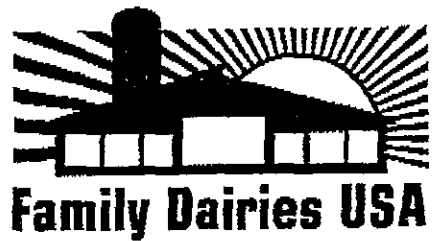
Family Dairies USA-Kewaskum

Hauling for November 1 to November 30, 2004.

Plant	City	# of Loads	Cost	Total
Dairy Farm Prod	Goshen	4	\$ 705.00	\$2,820.00
Dairy Farm Prod	Goshen		\$ 600.00	\$0.00
Dairy Farm Prod	Goshen		\$ 686.76	\$0.00
CrossRoads	Indianapolis		\$ 768.00	\$0.00
East Side Prairie	Anderson	9	\$ 744.00	\$6,696.00
East Side Prairie	Anderson	11	\$ 911.70	\$10,028.70
East Side Prairie	Anderson	1	\$ 755.00	\$755.00
East Side Prairie	Anderson	1	\$ 755.33	\$755.33
Dean Foods	Rochester		\$ 708.00	\$0.00
				<u>\$21,055.03</u>
Fuel Surcharge			12.0%	<u>\$2,526.60</u>
				<u>\$23,581.63</u>
			Paid on Advance	-
Amount Due Family Dairies USA				<u>\$23,581.63</u>

DUE UPON RECEIPT:

FAMILY DAIRIES USA
P.O. BOX 14380
MADISON, WI 53708-9782



Dairy Farmers of America
 3737 Embassy Parkway
 PO Box 5530
 Fairland, OH 44334-0530

October 11, 2004

Family Dairies USA-Kewaskum

Hauling for September 1 to September 30, 2004.

Plant	City	# of Loads	Cost	Total
Dairy Farm Prod	Goshen	4	\$ 665.00	\$2,660.00
Dairy Farm Prod	Goshen	1	\$ 865.00	\$865.00
Dairy Farm Prod	Goshen	2	\$ 623.99	\$1,247.98
Dairy Farm Prod	Goshen	1	\$ 600.00	\$600.00
Allen Dairy	Fort Wayne	3	\$ 773.00	\$2,319.00
East Side Prairie	Anderson	3	\$ 871.70	\$2,615.10
East Side Prairie	Anderson	1	\$ 773.00	\$773.00
East Side Prairie	Anderson	2	\$ 911.70	\$1,823.40
East Side Prairie	Anderson	1	\$ 860.16	\$860.16
East Side Prairie	Anderson	1	\$ 758.85	\$758.85
East Side Prairie	Anderson	1	\$ 744.00	\$744.00
Dean Foods	Rochester	3	\$ 715.00	\$2,145.00
Dean Foods	Rochester	1	\$ 623.99	\$623.99
Dean Foods	Rochester	2	\$ 552.00	\$1,104.00
				<u>\$19,139.48</u>
Fuel Surcharge			8.0%	<u>\$1,531.16</u>
				<u>\$20,670.64</u>
			Paid on Advance	-
			Amount Due Family Dairies USA	<u>\$20,670.64</u>

DUE UPON RECEIPT:

FAMILY DAIRIES USA
 P.O. BOX 14380
 MADISON, WI 53708-9782

3225 East Washington Avenue • Madison, WI 53704-4361 • Phone (608) 244-3373 • Fax (608) 244-3643

GRANDE CHEESE

October 2004 Actual

Delivery: East Side - Anderson, IN

Freight Charges

Pick up Location	Lbs.	Rate	Cost
Juda	55,540	\$1.800	\$999.72
Juda	156,622	\$2.150	\$3,367.37
Juda	106,166	\$0.300	\$318.50
	<u>318,328</u>	<u>\$1.47</u>	<u>\$4,685.59</u>

Delivery: Deans - Rochester, IN

Freight Charges

Pick up Location	Lbs.	Rate	Cost
Juda	53,100	\$1.800	\$955.80
Juda	311,440	\$0.500	\$1,557.20
Juda	160,120	\$1.450	\$2,321.74
	<u>524,660</u>	<u>\$0.921</u>	<u>\$4,834.74</u>

Delivery: DFA, Goshen, IN

Freight Charges

Pick up Location	Lbs.	Rate	Cost
Juda	158,000	\$1.700	\$2,686.00
Juda	54,220	\$1.350	\$731.97
Juda	53,220	\$0.450	\$239.49
	<u>265,440</u>	<u>\$1.378</u>	<u>\$3,657.46</u>

Grand Total **1,108,428** **\$1.189** **\$13,177.79**

GRANDE CHEESE

November 2004 Actual

Delivery: East Side - Anderson, IN
Freight Charges

Pick up Location	Lbs.	Rate	Cost
Juda	0	\$1.800	\$0.00
Juda	52,360	\$2.150	\$1,125.74
Juda	52,907	\$0.300	\$158.72
	<u>105,267</u>	<u>\$1.220</u>	<u>\$1,284.46</u>

Delivery: Deans - Rochester, IN
Freight Charges

Pick up Location	Lbs.	Rate	Cost
Juda	321,580	\$1.800	\$5,788.44
Juda	369,920	\$0.500	\$1,849.60
Juda	214,660	\$1.450	\$3,112.57
	<u>906,160</u>	<u>\$1.186</u>	<u>\$10,750.61</u>

Delivery: DFA, Goshen, IN
Freight Charges

Pick up Location	Lbs.	Rate	Cost
Juda	0	\$1.700	\$0.00
Juda	0	\$1.350	\$0.00
Juda	53,360	\$0.450	\$240.12
	<u>53,360</u>	<u>\$0.450</u>	<u>\$240.12</u>

Grand Total **1,064,787** **\$1.153** **\$12,275.19**

Load Date	BO Number	TRIP Number	Account - Project - Trailer	Subtotal
08/31/04	655507	60061	DENMARK-ROCHESTER - ORDER 33	634.65
09/14/04	655896	60258	DENMARK-INDIANAPOLIS - ORDER 33	992.85
09/18/04	655906	60341	DENMARK-INDIANAPOLIS - ORDER 33	992.85
09/20/04	409771	60350	GREENWOOD-INDIANAPOLIS - ORDER 33	1,384.25
09/28/04	657606	60450	DENMARK-INDIANAPOLIS - ORDER 33	1,002.85
10/10/04	655001	60633	KIEL-INDIANAPOLIS - ORDER 33	1,055.20
10/10/04	655002	60634	KIEL-ANDERSON - ORDER 33	958.45
10/10/04	378	60639	GREENWOOD-KIEL - ORDER 33	450.00
10/12/04	68724	60673	DENMARK-INDIANAPOLIS - ORDER 33	1,369.27
10/17/04	655534	60725	DENMARK-GOSHEN - ORDER 33	843.65
10/17/04	655044	60723	KIEL-ANDERSON - ORDER 33	1,069.45
10/17/04	655536	60726	DENMARK-GOSHEN - ORDER 33	849.69
10/17/04	655535	60727	DENMARK-GOSHEN - ORDER 33	843.65
10/17/04	657783	60724	DENMARK-INDIANAPOLIS - ORDER 33	897.85
10/17/04	525099	60728	GREENWOOD-GOSHEN - ORDER 33	1,232.05
10/17/04	655043	60722	KIEL-ROCHESTER - ORDER 33	755.85
10/17/04	655042	60721	KIEL-ROCHESTER - ORDER 33	745.85
10/18/04	525097	60741	GREENWOOD-ANDERSON - ORDER 33	1,353.65
10/18/04	655927	60739	DENMARK-ROCHESTER - ORDER 33	848.65
10/18/04	655045	60734	KIEL-INDIANAPOLIS - ORDER 33	898.05
10/18/04	655046	60735	KIEL-ROCHESTER - ORDER 33	740.85
10/18/04	655047	60736	KIEL-ROCHESTER - ORDER 33	755.85
10/19/04	655556	60754	DENMARK-ANDERSON - ORDER 33	1,162.25
10/19/04	655538	60756	DENMARK-NEW WILMINGTON - ORDER 33	1,831.35
10/19/04	655539	60757	DENMARK-NEW WILMINGTON - ORDER 33	1,831.35
10/19/04	657782	60755	DENMARK-INDIANAPOLIS - ORDER 33	987.85
10/19/04	525370	60758	GREENWOOD-NEW WILMINGTON - ORDER 33	2,000.75
10/19/04	655051	60753	KIEL-ROCHESTER - ORDER 33	745.05
10/19/04	655049	60751	KIEL-ROCHESTER - ORDER 33	750.85
10/20/04	655930	60768	DENMARK-SHARPSVILLE - ORDER 33	1,524.75
10/20/04	655931	60769	DENMARK-SHARPSVILLE - ORDER 33	1,538.75
10/20/04	655557	60767	DENMARK-ANDERSON - ORDER 33	1,050.25
10/20/04	655054	60765	KIEL-ROCHESTER - ORDER 33	746.85
10/20/04	655052	60763	KIEL-ROCHESTER - ORDER 33	750.85
10/20/04	655053	60766	KIEL-ROCHESTER - ORDER 33	850.65
10/20/04	655055	60766	KIEL-ROCHESTER - ORDER 33	755.85
10/21/04	657743	60787	DENMARK-NEWARK - ORDER 33	844.65
10/21/04	657744	60800	DENMARK-NEWARK - ORDER 33	1,621.50
10/21/04	655832	60798	DENMARK-ROCHESTER - ORDER 33	1,501.50
10/21/04	655071	60793	KIEL-INDIANAPOLIS - ORDER 33	888.05
10/21/04	655081	60796	KIEL-ROCHESTER - ORDER 33	743.85
10/21/04	655082	60795	KIEL-ANDERSON - ORDER 33	972.45
10/24/04	655558	60826	DENMARK-ANDERSON - ORDER 33	1,102.25
10/24/04	525372	60827	GREENWOOD-ROCHESTER - ORDER 33	1,197.05
10/24/04	657753	60826	DENMARK-INDIANAPOLIS - ORDER 33	984.85
10/24/04	655063	60821	KIEL-INDIANAPOLIS - ORDER 33	883.05
10/24/04	655084	60822	KIEL-INDIANAPOLIS - ORDER 33	881.05
10/24/04	655086	60824	KIEL-INDIANAPOLIS - ORDER 33	848.05
10/25/04	655933	60839	DENMARK-NEW WILMINGTON - ORDER 33	854.65
10/25/04	655088	60835	KIEL-INDIANAPOLIS - ORDER 33	893.05
10/25/04	655087	60836	KIEL-INDIANAPOLIS - ORDER 33	871.05
10/26/04	655089	60838	KIEL-INDIANAPOLIS - ORDER 33	874.05
10/26/04	657755	60857	DENMARK-INDIANAPOLIS - ORDER 33	1,017.85
10/27/04	657757	60856	DENMARK-INDIANAPOLIS - ORDER 33	1,017.85
10/27/04	655091	60868	KIEL-INDIANAPOLIS - ORDER 33	920.45
10/28/04	657759	60892	DENMARK-INDIANAPOLIS - ORDER 33	1,015.34
10/28/04	655112	60883	KIEL-ANDERSON - ORDER 33	869.49
10/29/04	697702	60912	SIOUX FALLS - LAKE NORDEN (WHOLE MILK) - ORDER 33	300.00
10/31/04	655134	60907	KIEL-NEWARK - ORDER 33	1,348.70
10/31/04	525373	60895	GREENWOOD-ROCHESTER - ORDER 33	1,123.50
10/31/04	655135	60906	KIEL-NEWARK - ORDER 33	1,348.70
10/31/04	657747	60908	DENMARK-NEWARK - ORDER 33	1,465.71
10/31/04	657763	60914A	DENMARK-INDIANAPOLIS - ORDER 33	912.85
10/31/04	655131	60909	KIEL-NEWARK - ORDER 33	1,408.50
10/31/04	655132	60914	KIEL-NEWARK - ORDER 33	1,445.08
10/31/04	655115	60911	KIEL-ANDERSON - ORDER 33	1,086.45

Hauling Charges - Pine Island-Tanker

Load Date	BOL Number	TRF Number	From/To - Product Hauled	Sub Total
10/31/04	657761	60910	DENMARK-INDIANAPOLIS - ORDER 33	912.85
10/31/04	655133	60913	KIEL-NEWARK - ORDER 33	1,394.70
11/01/04	655119	60917	KIEL-ANDERSON - ORDER 33	969.49
11/01/04	655117	60915	KIEL-INDIANAPOLIS - ORDER 33	920.45
11/01/04	655121	60919	KIEL-INDIANAPOLIS - ORDER 33	920.45
11/01/04	655129	60918	KIEL-INDIANAPOLIS - ORDER 33	920.45
11/01/04	655118	60916	KIEL-INDIANAPOLIS - ORDER 33	920.45
11/01/04	657768	60920	DENMARK-INDIANAPOLIS - ORDER 33	935.42
11/01/04	657767	60925	DENMARK-INDIANAPOLIS - ORDER 33	978.56
11/01/04	657768	60923	DENMARK-INDIANAPOLIS - ORDER 33	875.21
11/01/04	525374	60924	GREENWOOD-INDIANAPOLIS - ORDER 33	1,298.57
11/02/04	76190	60936	CALEDONIA-CLEVELAND - ORDER 33	1,480.00
11/02/04	655124	60943	KIEL-ANDERSON - ORDER 33	960.40
11/02/04	655122	60942	KIEL-INDIANAPOLIS - ORDER 33	920.45
11/02/04	655123	60945	KIEL-INDIANAPOLIS - ORDER 33	920.45
11/02/04	655125	60944	KIEL-INDIANAPOLIS - ORDER 33	920.45
11/02/04	657762	60941	KIEL-ROCHESTER - ORDER 33	882.43
11/02/04	657770	60937	DENMARK-INDIANAPOLIS - ORDER 33	978.53
11/02/04	657771	60939	DENMARK-INDIANAPOLIS - ORDER 33	1,046.20
11/02/04	655139	60930	KIEL-NEWARK - ORDER 33	1,357.43
11/02/04	655138	60931	KIEL-NEWARK - ORDER 33	1,423.31
11/02/04	525375	60935	GREENWOOD-ROCHESTER - ORDER 33	1,210.79
11/02/04	76187	60938	CALEDONIA-CLEVELAND - ORDER 33	1,480.50
11/03/04	655126	60957	KIEL-ROCHESTER - ORDER 33	798.56
11/03/04	655128	60960	KIEL-ANDERSON - ORDER 33	1,054.28
11/03/04	655127	60958	KIEL-INDIANAPOLIS - ORDER 33	920.45
11/03/04	655128	60962	KIEL-INDIANAPOLIS - ORDER 33	920.45
11/03/04	655130	60968	KIEL-INDIANAPOLIS - ORDER 33	920.45
11/03/04	657748	60950	DENMARK-NEWARK - ORDER 33	1,526.78
11/03/04	657749	60955	DENMARK-NEWARK - ORDER 33	1,509.79
11/03/04	657774	60956	DENMARK-INDIANAPOLIS - ORDER 33	925.74
11/03/04	657772	60961	DENMARK-INDIANAPOLIS - ORDER 33	1,217.24
11/03/04	657773	60952	KIEL-INDIANAPOLIS - ORDER 33	938.24
11/03/04	525376	60949	GREENWOOD-ROCHESTER - ORDER 33	1,276.42
11/04/04	655142	60977	KIEL-ANDERSON - ORDER 33	972.45
11/04/04	655143	60976	KIEL-INDIANAPOLIS - ORDER 33	920.45
11/04/04	657816	60978	KIEL-ROCHESTER - ORDER 33	1,102.82
11/04/04	657813	60979	KIEL-ROCHESTER - ORDER 33	912.26
11/04/04	657775	60971	DENMARK-INDIANAPOLIS - ORDER 33	1,012.38
11/04/04	655141	61270	KIEL-INDIANAPOLIS - ORDER 33	983.42
11/04/04	657751	60973	DENMARK-NEWARK - ORDER 33	1,543.68
11/04/04	657750	60974	DENMARK-NEWARK - ORDER 33	1,423.95
11/04/04	657752	60975	DENMARK-NEWARK - ORDER 33	883.98
11/05/04	657964	60986	DENMARK-NEWARK - ORDER 33	1,486.45
11/05/04	657963	60987	DENMARK-NEWARK - ORDER 33	1,506.31
11/05/04	657962	60980	DENMARK-NEWARK - ORDER 33	1,528.69
11/05/04	657965	60985	DENMARK-NEWARK - ORDER 33	1,493.87
11/06/04	657966	61001	DENMARK-NEWARK - ORDER 33	1,512.54
11/07/04	655144	61014	KIEL-ROCHESTER - ORDER 33	789.29
11/07/04	655146	61011	KIEL-ANDERSON - ORDER 33	972.45
11/07/04	657778	61021	KIEL-INDIANAPOLIS - ORDER 33	984.98
11/07/04	657778	61020	KIEL-INDIANAPOLIS - ORDER 33	1,063.21
11/07/04	657777	61016	DENMARK-INDIANAPOLIS - ORDER 33	964.85
11/07/04	657968	61003	DENMARK-NEWARK - ORDER 33	1,482.91
11/07/04	657969	61010	DENMARK-NEWARK - ORDER 33	1,462.80
11/07/04	525424	61022	GREENWOOD-INDIANAPOLIS - ORDER 33	1,325.29
11/08/04	655150	61034	KIEL-ANDERSON - ORDER 33	971.45
11/08/04	655148	61023	KIEL-INDIANAPOLIS - ORDER 33	920.45
11/08/04	657818	61936	DENMARK-ROCHESTER - ORDER 33	806.32
11/08/04	657970	61031	DENMARK-NEWARK - ORDER 33	1,523.57
11/08/04	525425	61028	GREENWOOD-ROCHESTER - ORDER 33	1,117.50
11/08/04	655149	61033	KIEL-INDIANAPOLIS - ORDER 33	920.45
11/08/04	655151	61035	KIEL-INDIANAPOLIS - ORDER 33	876.28
11/08/04	655152	61032	KIEL-NEWARK - ORDER 33	1,475.27
11/08/04	657819	61013	KIEL-ROCHESTER - ORDER 33	835.21
11/08/04	657971	61049	DENMARK-NEWARK - ORDER 33	1,368.10

hauling Charges - Pine Island-Tanker

Load Date	Number	Number	From To - Product - Header	Sub Total
11/09/04	658031	61048	DENMARK-NEWARK - ORDER 33	1,486.20
11/09/04	657780	61050	DENMARK-INDIANAPOLIS - ORDER 33	1,178.69
11/09/04	78222	61085	CALEDONIA-CLEVELAND - ORDER 33	1,480.50
11/09/04	655156	61047	KIEL-ANDERSON - ORDER 33	1,019.96
11/09/04	655155	61042	KIEL-INDIANAPOLIS - ORDER 33	960.40
11/09/04	655154	61043	KIEL-INDIANAPOLIS - ORDER 33	925.73
11/09/04	655157	61041	KIEL-INDIANAPOLIS - ORDER 33	984.85
11/09/04	657779	61044	KIEL-INDIANAPOLIS - ORDER 33	997.56
11/09/04	625426	61046	GREENWOOD-INDIANAPOLIS - ORDER 33	1,284.98
11/10/04	659162	61063	KIEL-INDIANAPOLIS - ORDER 33	920.45
11/10/04	657820	61077	DENMARK-ROCHESTER - ORDER 33	1,152.13
11/10/04	658034	61062	DENMARK-NEWARK - ORDER 33	1,502.30
11/10/04	658033	61061	DENMARK-NEWARK - ORDER 33	1,537.39
11/10/04	658032	61055	DENMARK-NEWARK - ORDER 33	1,576.69
11/10/04	655161	61065	KIEL-ANDERSON - ORDER 33	997.88
11/10/04	655160	61064	KIEL-INDIANAPOLIS - ORDER 33	920.45
11/10/04	655163	61067	KIEL-NEWARK - ORDER 33	1,479.51
11/10/04	625427	61068	GREENWOOD-ROCHESTER - ORDER 33	1,158.61
11/11/04	655183	61080	KIEL-NEWARK - ORDER 33	1,388.97
11/11/04	657822	61079	DENMARK-ROCHESTER - ORDER 33	954.12
11/11/04	655187	61078	KIEL-INDIANAPOLIS - ORDER 33	972.84
11/11/04	655186	61072	KIEL-INDIANAPOLIS - ORDER 33	920.45
11/11/04	655184	61074	KIEL-NEWARK - ORDER 33	1,483.91
11/11/04	657821	61079	KIEL-ROCHESTER - ORDER 33	954.12
11/11/04	657823	61081	KIEL-ROCHESTER - ORDER 33	807.69
11/11/04	657786	61073	KIEL-INDIANAPOLIS - ORDER 33	1,026.73
11/11/04	657781	61076	KIEL-INDIANAPOLIS - ORDER 33	1,087.36
11/12/04	655190	61089	KIEL-NEW WILMINGTON - ORDER 3	1,585.98
11/13/04	655541	61112	DENMARK-NEW WILMINGTON - ORDER 33	1,857.00
11/13/04	655540	61111	DENMARK-NEW WILMINGTON - ORDER 33	1,865.18
11/14/04	655197	61114	KIEL-ANDERSON - ORDER 33	953.05
11/14/04	655194	61113	KIEL-INDIANAPOLIS - ORDER 33	889.87
11/14/04	655192	61115	KIEL-INDIANAPOLIS - ORDER 33	920.45
11/14/04	658050	61100	KIEL-INDIANAPOLIS - ORDER 33	1,051.16
11/14/04	658051	61104	KIEL-INDIANAPOLIS - ORDER 33	993.61
11/14/04	655542	61103	DENMARK-NEW WILMINGTON - ORDER 33	1,835.67
11/14/04	625422	61118	GREENWOOD-NEW WILMINGTON - ORDER 33	1,287.09
11/15/04	625421	61099	GREENWOOD-NEW WILMINGTON - ORDER 33	1,339.68
11/15/04	655198	61123	KIEL-ANDERSON - ORDER 33	680.63
11/15/04	655202	61120	KIEL-INDIANAPOLIS - ORDER 33	956.60
11/15/04	658055	61102	KIEL-INDIANAPOLIS - ORDER 33	937.28
11/15/04	658054	61105	DENMARK-INDIANAPOLIS - ORDER 33	1,027.59
11/16/04	655209	61147	KIEL-INDIANAPOLIS - ORDER 33	920.45
11/16/04	655207	61150	KIEL-INDIANAPOLIS - ORDER 33	1,102.07
11/16/04	658056	61148	KIEL-INDIANAPOLIS - ORDER 33	1,005.37
11/16/04	658057	61149	KIEL-INDIANAPOLIS - ORDER 33	974.63
11/16/04	625420	61135	GREENWOOD-NEW WILMINGTON - ORDER 33	1,893.07
11/17/04	655947	61154	DENMARK-ANDERSON - ORDER 33	1,059.64
11/17/04	655211	61185	KIEL-INDIANAPOLIS - ORDER 33	920.45
11/17/04	658058	61164	KIEL-INDIANAPOLIS - ORDER 33	990.68
11/17/04	658060	61166	KIEL-INDIANAPOLIS - ORDER 33	894.26
11/17/04	658053	61163	DENMARK-INDIANAPOLIS - ORDER 33	1,012.30
11/17/04	625418	61160	GREENWOOD-ANDERSON - ORDER 33	1,325.64
11/18/04	655212	61180	KIEL-ANDERSON - ORDER 33	920.45
11/18/04	657822	61183	KIEL-ROCHESTER - ORDER 33	806.32
11/18/04	657823	61184	KIEL-ROCHESTER - ORDER 33	983.54
11/18/04	658061	61182	KIEL-INDIANAPOLIS - ORDER 33	937.12
11/18/04	658063	61185	KIEL-INDIANAPOLIS - ORDER 33	979.37
11/18/04	625417	61186	GREENWOOD-INDIANAPOLIS - ORDER 33	1,247.68
11/21/04	655215	61218	KIEL-INDIANAPOLIS - ORDER 33	973.62
Total				211,355.57
Surcharge	12%			25,360.27
Total				236,695.84

CHARLES POCH INC

W423 STATE RD 67
ST. CLOUD, WI 53079-1725
Phone 920-477-2011
Fax 920-477-3804

INVOICE

0572

SOLD TO:

DATE: 10/19/04

MIDEAST MILK MARKETING AGENCY INC
8904 BASH STREET - Suite M
INDIANAPOLIS, IN 46256

INVOICE #	DATE	WEIGHT	DESCRIPTION	UNIT PRICE	AMOUNT
18758	10/13	48000	Load hauled from NFO, Fond Du Lac, to Prairie Farm, Anderson, In Min Wgt(47767)	1.65	\$ 792.00
10949	10/12	48000	Load hauled from NFO, Fond Du Lac, to DFA, Goshen, In Min Wgt(45237)	1.30	\$ 624.00
18755	10/5	48000	Loads hauled from NFO, FOND DU LAC, to Dean Foods, Rochester, In. Min Wgt(43309)		
18756	10/6	48796			
18757	10/7	48000	Min Wgt(47346)		
		<u>144796</u>	Total FDL to Rochester, In @	1.29	\$1867.87
					3283.87
			Fuel Surcharge	12%	\$ 262.71
					394.06
			THANK YOU!!!	TOTAL	<u>\$3671.93</u>
			TERMS: 30 Days		\$3546.58
			A FINANCE CHARGE of 1-1/2% per month		
			ANNUAL RATE of 18% on past due invoices.		
			When sending payment, include invoice number on the check. THANK YOU!		

40113 DC
10/21/04

\$3671.93
~~\$3546.58~~

OK Q&A
10/27/04

Exhibit ____ Table 7

Summary of Mileage Ranges From Market Administrator Data

Oct-04

Mile Range	N Ohio	S Ohio	Michigan	Indiana	Pennsylvania	Total
1 - 20	10,660,449	6,893,518	14,649,654	11,520,826	8,711,211	52,435,658
21 - 40	38,744,933	14,698,816	42,903,628	21,685,475	12,430,481	130,463,333
41 - 60	11,328,063	13,712,241	25,489,623	10,878,290	23,722,364	85,130,581
61 - 80	13,001,905	5,390,544	36,990,391	27,682,508	7,454,276	90,519,624
81 - 100						-
Sub Total	73,735,350	40,695,119	120,033,296	71,767,099	52,318,332	358,549,196
All Total	92,080,764	126,541,716	188,941,975	118,424,424	84,716,021	610,704,900
Remainder	18,345,414	85,846,597	68,908,679	46,657,325	32,397,689	252,155,704
Pct Exempted	80%	32%	64%	61%	62%	59%

Exhibit _____, Chart 1 - Comparison of Indexed Fluid Use Pounds vs. Reserve
 Supply Pounds Federal Order 1033 - January 2000 thru December 2004

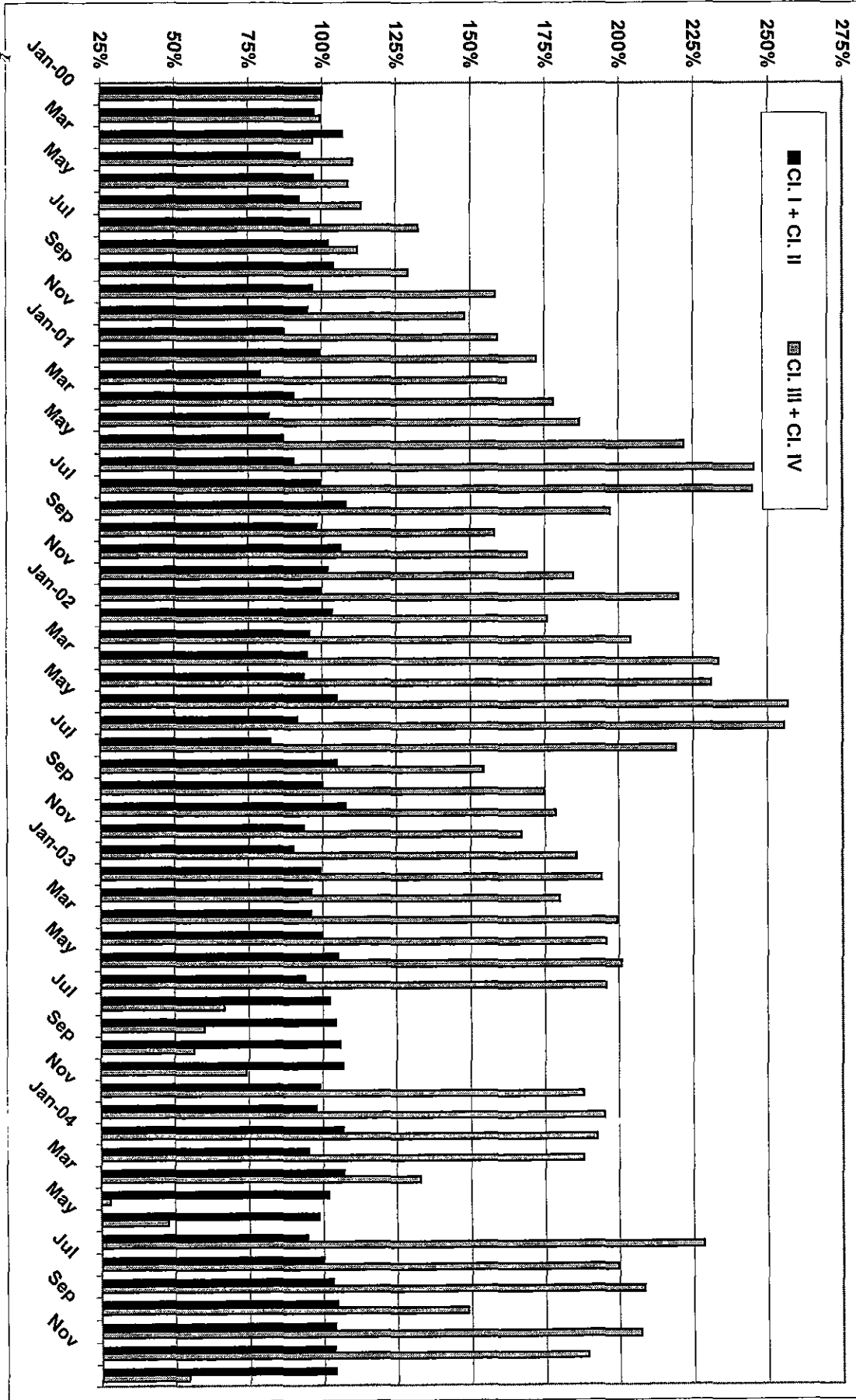


Exhibit 15
Chart 2 Diesel Fuel Midwest Monthly
Department of Energy

