

Bean Market News 2010 Summary



USDA Agricultural Marketing Service



USDA - AMS, LIVESTOCK AND GRAIN MARKET NEWS

800 8th Avenue, Suite 209

Greeley, Colorado 80631

Telephone: (970) 353-9750 FAX: (970) 353-9790

Internet Access: WWW.AMS.USDA.GOV/LSMARKETNEWS

Reporter: Devin Murnin

Market Reporting Assistant/Editor: Randall Bisel



TABLE OF CONTENTS

Table of Contents	Page
Terms of Use/Copyright Information	i - iii
Dealer Price Trends - Graphs	1 - 4
Pinto - Northern Colorado	1
Pinto - North Dakota/Minnesota	2
Pea Bean - Michigan	3
Great Northern - Western Nebraska/Eastern Wyoming	4
Monthly Average Prices	5 - 18
Dealer - Pinto, Great Northern	5
Grower - Pinto, Great Northern	6
Dealer - Black, Pink, Garbanzo	7
Grower - Black, Pink, Garbanzo	8
Dealer - Pea Bean, Light Red Kidney	9
Grower - Pea Bean, Light Red Kidney	10
Dealer - Dark Red Kidney, Small Red	11
Grower - Dark Red Kidney, Small Red	12
Dealer - Brewer Lentil, Pardina Lentil, Green Pea Split and Whole	13
Grower - Brewer Lentil, Pardina Lentil, Whole Green Pea	14
Dealer - Austrian Winter Peas, Richlea Lentil, Yellow Pea Split and Whole	15
Grower - Austrian Winter Pea, Richlea Lentil, Whole Yellow Pea	16
Dealer - Baby Lima, Large Lima, Blackeye, Garbanzo (California)	17
Grower - Baby Lima, Large Lima, Blackeye, Garbanzo (California)	18
Dry Beans, U.S. Production by Commercial Class, USDA/KCCC Purchases of Dry Edible Beans, Peas, and Lentils	19
Dry Edible Beans, Production by Commercial Class by State	20 - 21
Dry Bean, Pea, and Lentil Production 2006-2010, USDA, NASS	22

Dry Pea and Lentil Production, USADPLC	23
Dry Bean, U.S. Exports by Country of Destination	24 - 25
Dry Pea, U.S. Exports by Country of Destination	26 - 27
U.S. Exports, Dry Beans and Dry Ripe Peas FY Totals, 2005-2010	28
U.S. Exports, by Month, Dry Beans and Peas - Graphs	29 - 33
Pea Bean, Great Northern, Large Lima, Baby Lima	29
Light Red Kidney, Dark Red Kidney, Pinto, Black	30
Legume Seed, Small Reds, Other Kidney, Beans NESOI	31
Green Pea, Lentil, Seed Pea, Yellow Pea	32
Garbanzo, Blackeye, Peas NESOI, Split Peas	33
USDA/F&V Purchases for Domestic Feeding Programs	34
World Pulse Production	35
World Dry Bean Production	36
World Garbanzo Production	37
World Pea Production	38
World Lentil and Lupine Production	39
European Crop Production - Broad and Field Beans	40
European Crop Production - Peas	41
European Crop Production - Kidney Beans, Sweet Lupines	42
European Crop Production - Other Dried Pulses	43
Canadian Pulses Supply and Disposition, European Crop Production - Lentils	44
Selected special crop data, Canada, by crop year, Dry Peas and Dried Beans	45
Selected special crop data, Canada, by crop year, Lentils and Chickpeas	46

Exports of Special Crops, by country of final destination, Canada, Dried Peas	47
Exports of Special Crops, by country of final destination, Canada, Chickpeas	48
Exports of Special Crops, by country of final destination, Canada, Lentils	49
Exports of Special Crops, by country of final destination, Canada, Dried Beans	50
November 2010 estimates of production of principal field crops — Imperial, Canada	51
Australian Crop Production, Production by Province	52
Australian Supply and Disposition of Pulses, Australian Field Pea Production	53
South African Dry Bean Production, Production by Province, Consumption and Producer Price	54
Brazil and Chile, Harvest Area, Yield, Production	55
India Area, Yield, Production - Vigna Mungo, Pigion Peas, Lentils, Total	56

Terms of Use

United States

The United States Department of Agriculture has collected this information. You are, however, free to apply it as you wish, provided that you acknowledge the United States Department of Agriculture as the source of the basic data wherever you process, apply, utilize, publish or distribute the data; and also that you specify that the relevant application and analyses (where applicable) result from your own processing of the data and not The United States Department of Agriculture. World Wide Web Site located at www.usda.ams.gov. **NOTE: USDA symbols or logos are intended for official USDA use only. They are expressly excluded from any application that would imply or endorse a commercial product or service. The symbol or logo may not be used by anyone outside of USDA without permission.**

Chile

The contents and photographs published in this site are property of Agriculture and Livestock Service. The user can include the contents of this with the addition of the source and link to homepage www.sag.cl.

All rights, including intellectual property, on the Web pages on this site belong to the Agricultural and Livestock Service. When accessed, the user has the right to review all the information required and can only copy it to your computer for personal purposes other than commercial.

The information provided by www.sag.cl can be referenced by others, only if it clearly indicates its origin. If you wish to make such a reference in promotional materials or other means may be made only with written permission from the Agricultural and Livestock Service.

Copyright Information

Canada

Statistics Canada information is used with the permission of Statistics Canada. Users are forbidden to copy the data and disseminate them, in an original or modified form, for commercial purposes, without permission from Statistics Canada. Information on the availability of the wide range of data from Statistics Canada can be obtained from Statistics Canada's Regional Offices, its World Wide Web site at www.statcan.ca, and its toll-free access number 1-800-263-1136.

South Africa

The State has copyright on this information. You are, however, free to apply it as you wish, provided that you acknowledge the Directorate Agricultural Statistics as the source of the basic data wherever you process, apply, utilize, publish or distribute the data; and also that you specify that the relevant application and analyses (where applicable) result from your own processing of the data. World Wide Web Site located at www.nda.agric.za.

© European Communities

Reproduction is authorized, provided the source is acknowledged, save where otherwise stated. Where prior permission must be obtained for the reproduction or use of textual and multimedia information (sound, images, software, etc.), such permission shall cancel the above-mentioned general permission and shall clearly indicate any restrictions on use. World Wide Web Site located at [//epp.eurostat.ec.europa.eu/portal/](http://epp.eurostat.ec.europa.eu/portal/).



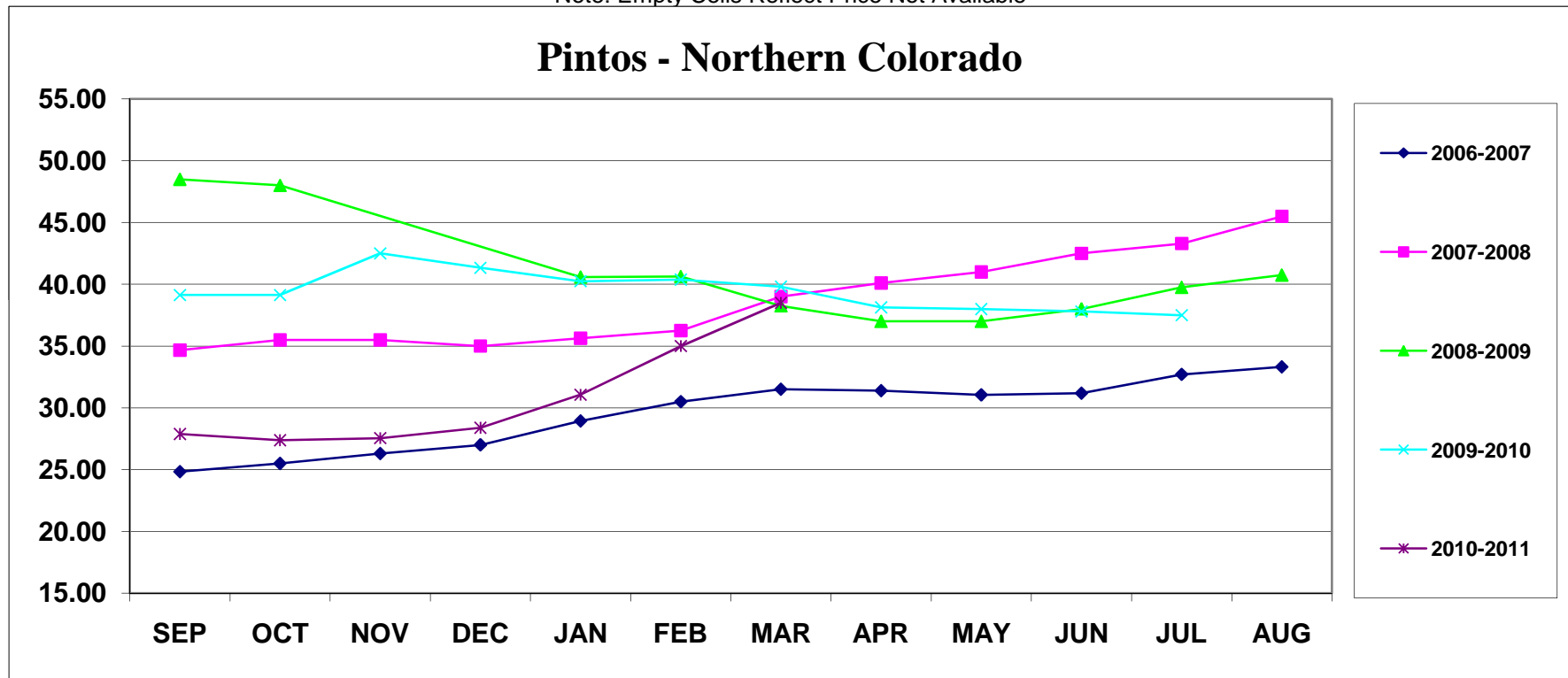
© 2008 Brazil Ministry of Agriculture, Livestock and Supply.

All rights reserved. Reproduction is permitted provided the source is cited. The liability for copyright texts and images of this book is the author.

Dealer Monthly Average Price
Per Cwt By Crop Year Fob
PINTOS - NORTHERN COLORADO

	SEP	OCT	NOV	DEC	JAN	FEB	MAR	APR	MAY	JUN	JUL	AUG	AVG
2006-2007	24.83	25.50	26.30	27.00	28.94	30.50	31.50	31.38	31.05	31.18	32.70	33.31	29.52
2007-2008	34.67	35.50	35.50	35.00	35.63	36.25	39.00	40.10	41.00	42.50	43.30	45.50	38.66
2008-2009	48.50	48.00			40.58	40.63	38.25	37.00	37.00	38.00	39.75	40.75	40.85
2009-2010	39.13	39.13	42.50	41.33	40.25	40.38	39.80	38.13	38.00	37.80	37.50		39.45
2010-2011	27.88	27.38	27.55	28.38	31.06	35.00	38.50						30.82

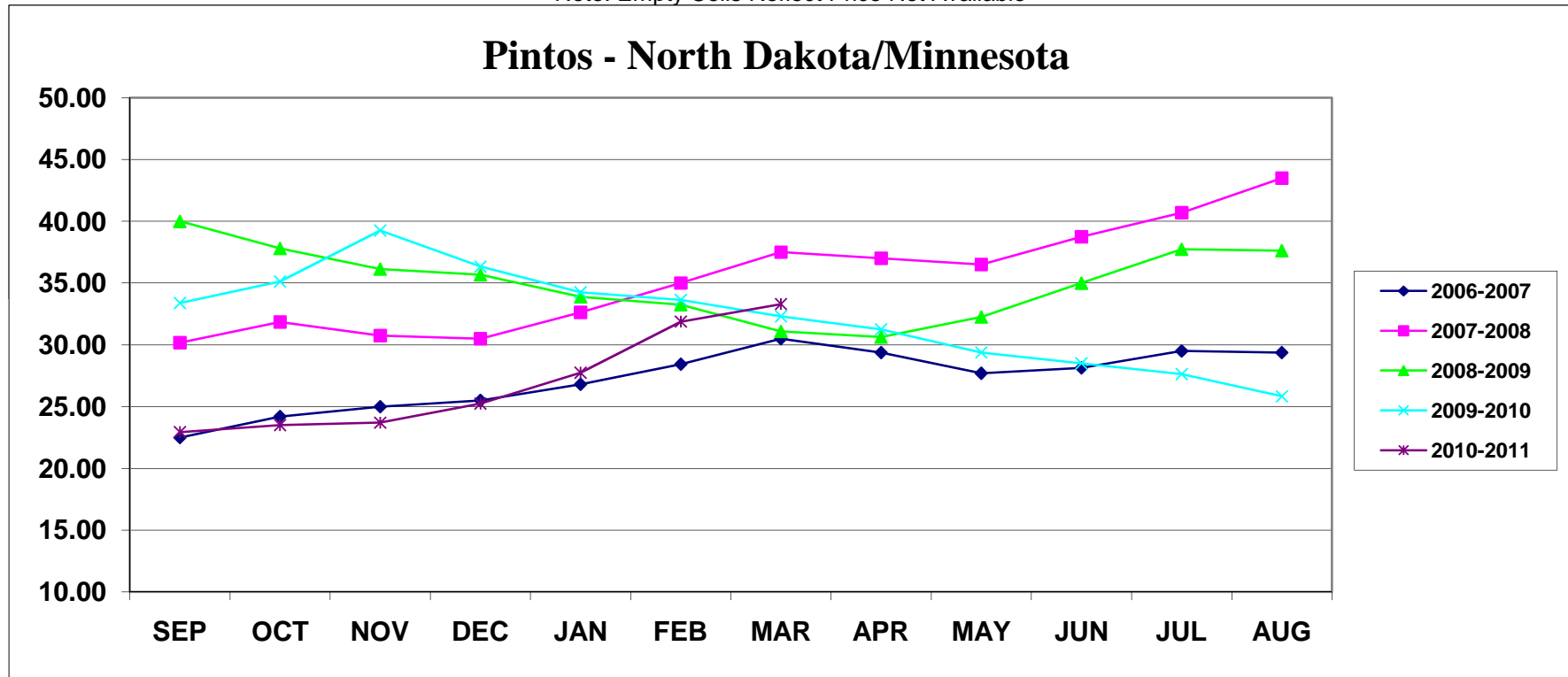
Note: Empty Cells Reflect Price Not Available



Dealer Monthly Average Price
Per Cwt By Crop Year Fob
PINTOS - NORTH DAKOTA/MINNESOTA

	SEP	OCT	NOV	DEC	JAN	FEB	MAR	APR	MAY	JUN	JUL	AUG	AVG
2006-2007	22.50	24.20	25.00	25.50	26.81	28.44	30.50	29.38	27.70	28.13	29.50	29.38	27.25
2007-2008	30.17	31.85	30.75	30.50	32.63	35.00	37.50	37.00	36.50	38.75	40.70	43.50	35.40
2008-2009	40.00	37.81	36.13	35.67	33.88	33.25	31.10	30.63	32.25	35.00	37.75	37.63	35.09
2009-2010	33.38	35.13	39.25	36.33	34.25	33.63	32.30	31.25	29.38	28.50	27.63	25.83	32.24
2010-2011	22.94	23.50	23.70	25.25	27.75	31.88	33.30						26.90

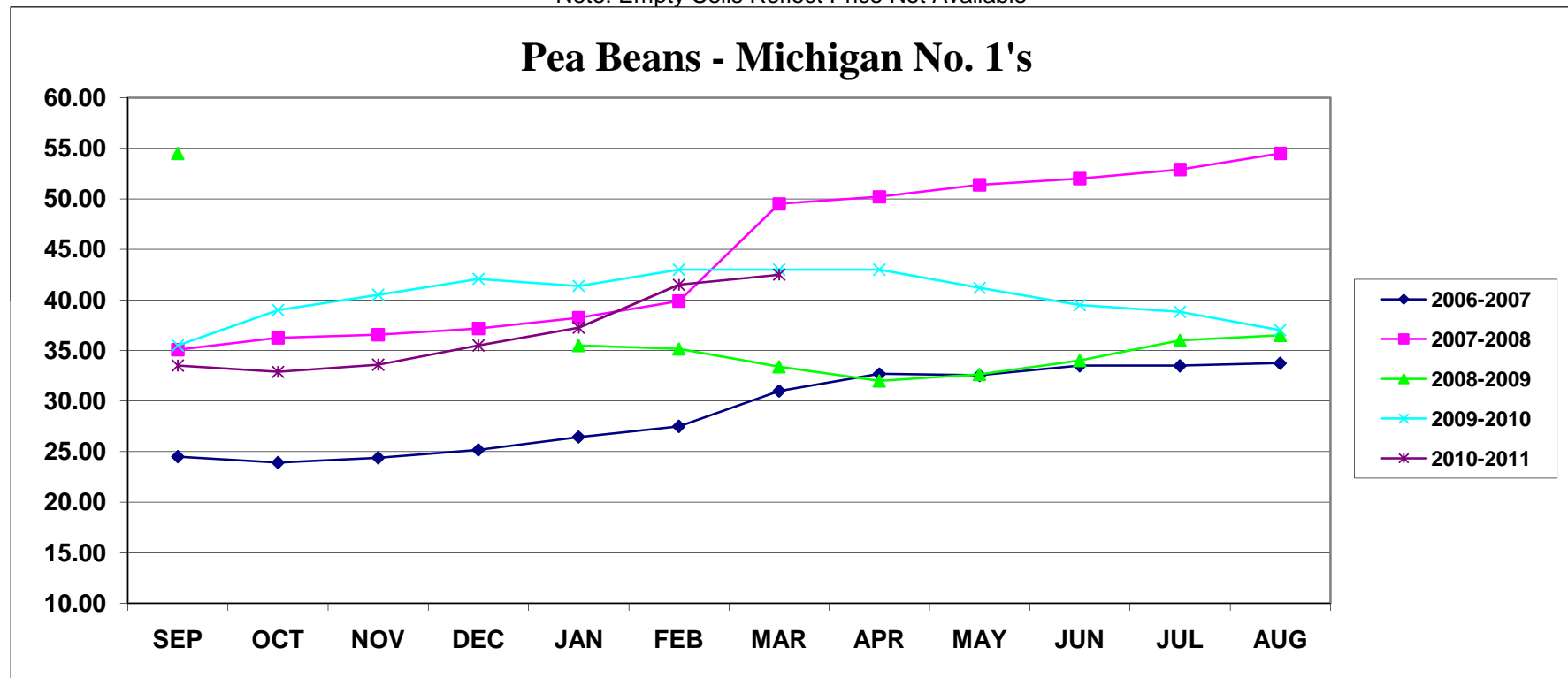
Note: Empty Cells Reflect Price Not Available



**Dealer Monthly Average Price
Per Cwt By Crop Year Fob
PEA BEANS - MICHIGAN No. 1's**

	SEP	OCT	NOV	DEC	JAN	FEB	MAR	APR	MAY	JUN	JUL	AUG	AVG
2006-2007	24.50	23.90	24.38	25.17	26.44	27.50	31.00	32.69	32.55	33.50	33.50	33.75	29.07
2007-2008	35.08	36.25	36.56	37.17	38.25	39.88	49.50	50.20	51.38	52.00	52.90	54.50	44.47
2008-2009	54.50				35.50	35.15	33.40	32.00	32.63	34.00	36.00	36.50	36.63
2009-2010	35.50	39.00	40.50	42.08	41.38	43.00	43.00	43.00	41.19	39.50	38.83	37.00	40.33
2010-2011	33.50	32.88	33.60	35.50	37.25	41.50	42.50						36.68

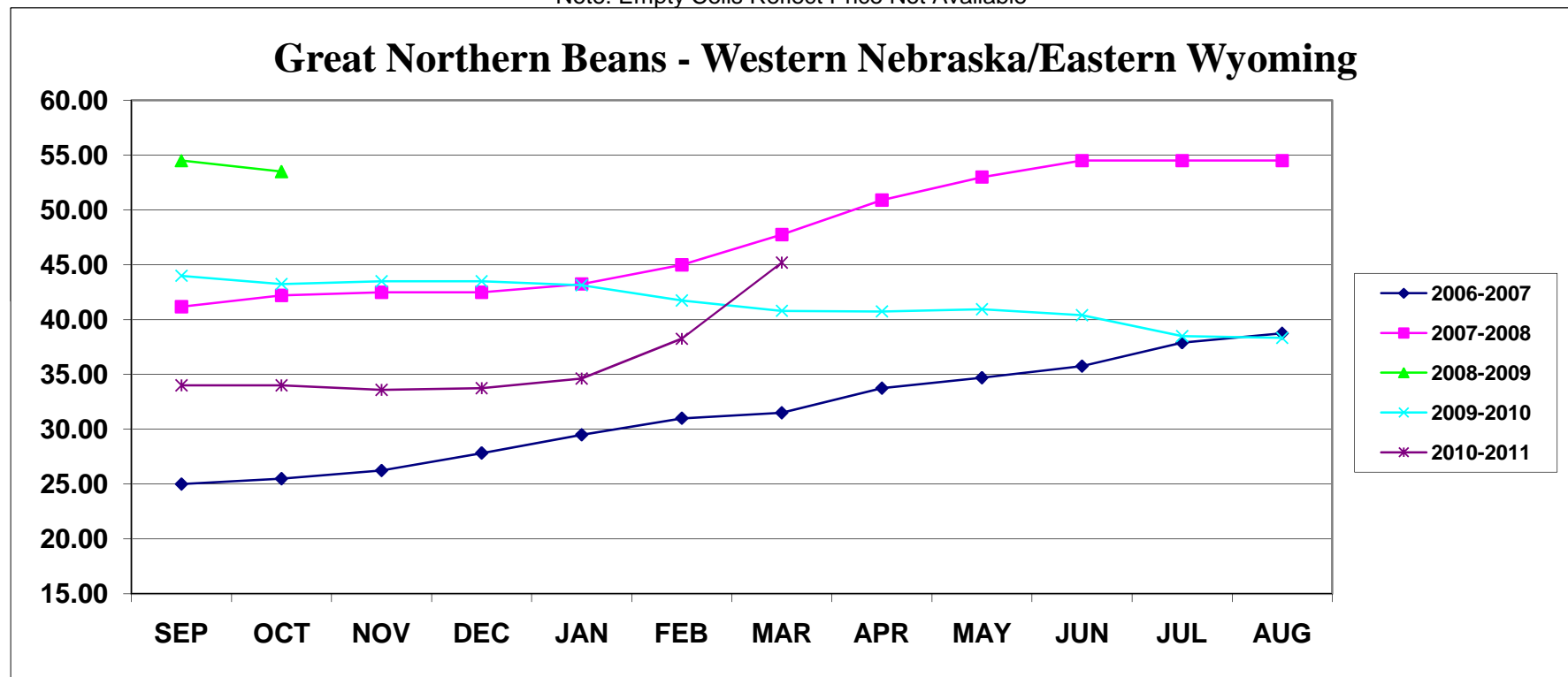
Note: Empty Cells Reflect Price Not Available



Dealer Monthly Average Price
Per Cwt By Crop Year Fob
GREAT NORTHERN - WESTERN NEBRASKA/EASTERN WYOMING

	SEP	OCT	NOV	DEC	JAN	FEB	MAR	APR	MAY	JUN	JUL	AUG	AVG
2006-2007	25.00	25.50	26.25	27.83	29.50	31.00	31.50	33.75	34.70	35.75	37.90	38.75	28.08
2007-2008	41.17	42.20	42.50	42.50	43.25	45.00	47.75	50.90	53.00	54.50	54.50	54.50	47.65
2008-2009	54.50	53.50											54.00
2009-2010	44.00	43.25	43.50	43.50	43.13	41.75	40.80	40.75	40.94	40.40	38.50	38.33	41.57
2010-2011	34.00	34.00	33.60	33.75	34.63	38.25	45.20						36.20

Note: Empty Cells Reflect Price Not Available



Dealer Monthly Average Price Per Cwt By Crop Year Fob

	SEP	OCT	NOV	DEC	JAN	FEB	MAR	APR	MAY	JUN	JUL	AUG	AVG
PINTO - Northeast Colorado													
2006-2007	24.83	25.50	26.30	27.00	28.94	30.50	31.50	31.38	31.05	31.18	32.70	33.31	29.52
2007-2008	34.67	35.50	35.50	35.00	35.63	36.25	39.00	40.10	41.00	42.50	43.30	45.50	38.66
2008-2009	48.50	48.00	NA	NA	40.58	40.63	38.25	37.00	37.00	38.00	39.75	40.75	40.85
2009-2010	39.13	39.13	42.50	41.33	40.25	40.38	39.80	38.13	38.00	37.80	37.50		39.45
2010-2011	27.88	27.38	27.55	28.38	31.06	35.00	28.50						29.39
PINTO - North Dakota/Minnesota													
2006-2007	22.50	24.20	25.00	25.50	26.81	28.44	30.50	29.38	27.70	28.13	29.50	29.38	27.25
2007-2008	30.17	31.85	30.75	30.50	32.63	35.00	37.50	37.00	36.50	38.75	40.70	43.50	35.40
2008-2009	40.00	37.81	36.13	35.67	33.88	33.25	31.10	30.63	32.25	35.00	37.75	37.63	35.09
2009-2010	33.38	35.13	39.25	36.33	34.25	33.63	32.30	31.25	29.38	28.50	27.63	25.83	32.24
2010-2011	22.94	23.50	23.70	25.25	27.75	31.88	33.30						26.90
PINTO - Idaho/Washington													
2006-2007	25.83	27.10	27.50	27.50	29.00	30.50	31.75	32.50	32.50	32.69	33.25	33.33	30.29
2007-2008	34.17	35.50	35.88	36.25	37.19	38.00	39.75	40.50	41.75	43.00	43.90	45.50	39.28
2008-2009	NA	NA	NA	NA	48.33	45.38	45.00	NA	43.50	43.50	43.50	NA	44.87
2009-2010	43.17	43.00	44.63	44.50	43.50	42.38	41.85	41.69	41.00	39.70	38.25	37.50	41.76
2010-2011		32.00	31.70	31.50	31.50	34.14	38.10						33.16
PINTO - North Wyoming/Montana													
2006-2007	NA	NA	NA	NA	NA	NA	NA	NA	NA	NA	NA	NA	NA
2007-2008	NA	NA	NA	NA	NA	NA	NA	NA	NA	NA	NA	NA	NA
2008-2009	NA	NA	NA	NA	NA	NA	NA	NA	NA	NA	NA	NA	NA
2009-2010	NA	NA	NA	NA	NA	NA	NA	NA	NA	NA	NA	NA	NA
2010-2011	NA	29.00	29.50	29.50	31.67	33.00	38.00						31.78
GREAT NORTHERN - Western Nebraska/Eastern Wyoming													
2006-2007	25.00	26.25	27.38	27.83	29.50	31.00	31.50	33.75	34.70	35.75	37.90	38.75	31.61
2007-2008	41.17	42.20	42.50	42.50	43.25	45.00	47.75	50.90	53.00	54.50	54.50	54.50	47.65
2008-2009	54.50	53.50	NA	NA	NA	NA	NA	NA	NA	NA	NA	NA	54.00
2009-2010	44.00	43.25	43.50	43.50	43.13	41.75	40.80	40.75	40.94	40.40	38.50	38.33	41.57
2010-2011	34.00	34.00	33.60	33.75	34.63	38.25	45.20						36.20
GREAT NORTHERN - North Dakota/Minnesota													
2006-2007	22.17	22.50	25.38	25.67	27.00	27.00	NA	NA	NA	NA	NA	NA	24.95
2007-2008	38.00	39.65	39.50	39.50	39.50	40.13	43.13	46.83	NA	NA	NA	NA	40.78
2008-2009	NA	NA	NA	NA	40.00	NA	NA	NA	NA	NA	NA	NA	40.00
2009-2010	41.00	39.38	39.63	39.83	40.00	39.50	39.20	38.50	37.50	37.50	NA	NA	39.20
2010-2011	NA	29.00	29.50	29.50	30.50	36.25	NA						30.95

NA=Not Available
W=Withdrawn

Grower Monthly Average Price Per Cwt By Crop Year Fob

	SEP	OCT	NOV	DEC	JAN	FEB	MAR	APR	MAY	JUN	JUL	AUG	AVG
PINTO - Northeast Colorado													
2006-2007	19.50	19.50	19.88	20.00	22.00	23.25	24.75	25.00	24.90	25.00	27.00	26.75	23.13
2007-2008	27.00	28.00	27.00	26.50	26.75	29.50	31.75	31.20	32.13	32.50	33.60	36.00	30.16
2008-2009	38.63	34.00	NA	NA	30.33	29.00	28.40	27.50	27.50	28.30	30.25	31.00	30.49
2009-2010	29.00	26.50	29.25	30.00	30.00	30.00	30.00	28.13	27.50	27.50	25.88	23.63	28.12
2010-2011	18.75	19.50	19.85	19.50	20.88	26.25	27.20						21.70
PINTO - North Dakota/Minnesota													
2006-2007	17.67	18.50	19.25	19.50	21.25	22.50	23.50	23.25	22.10	22.00	22.10	22.13	21.15
2007-2008	24.33	25.40	24.13	24.00	25.50	27.75	29.75	29.30	29.50	30.38	31.50	34.38	27.99
2008-2009	32.50	27.17	27.00	27.00	26.25	26.25	24.00	24.25	24.50	26.60	28.75	29.00	26.94
2009-2010	25.63	25.50	30.33	28.00	27.33	26.63	24.70	23.50	23.00	23.00	22.63	20.38	25.05
2010-2011	17.50	18.00	18.00	18.00	20.38	24.38	25.33						20.23
PINTO - Idaho/Washington													
2006-2007	NA	NA	18.38	20.83	22.00	22.75	23.88	25.00	25.00	25.00	25.00	25.00	23.28
2007-2008	25.67	27.90	28.00	28.00	28.75	30.00	31.50	32.10	32.50	33.00	33.10	34.25	30.40
2008-2009	38.75	39.50	38.00	38.00	37.88	37.50	37.50	NA	NA	NA	NA	NA	38.16
2009-2010	32.00	31.00	31.75	31.33	31.25	30.75	30.70	30.38	30.00	29.20	28.50	27.17	30.34
2010-2011	NA	23.00	23.00	23.00	23.25	25.25	28.90						24.40
PINTO - North Wyoming/Montana													
2006-2007	NA	NA	NA	NA	NA	NA	NA	NA	NA	NA	NA	NA	NA
2007-2008	NA	NA	NA	NA	NA	NA	NA	NA	NA	NA	NA	NA	NA
2008-2009	NA	NA	NA	NA	NA	NA	NA	NA	NA	NA	NA	NA	NA
2009-2010	NA	NA	NA	NA	NA	NA	NA	NA	NA	NA	NA	NA	NA
2010-2011	20.50	18.00	18.00	18.50	20.38	24.38	25.33						20.73
GREAT NORTHERN - Western Nebraska/Eastern Wyoming													
2006-2007	18.00	18.00	20.00	20.00	21.75	22.38	24.75	26.00	26.00	26.50	28.00	28.50	23.32
2007-2008	31.33	32.00	32.00	32.00	32.00	32.75	35.75	38.00	40.00	40.00	40.00	41.50	35.61
2008-2009	41.50	NA	NA	NA	NA	NA	NA	NA	26.00	26.80	30.50	32.00	31.36
2009-2010	31.50	30.00	30.00	30.00	30.00	30.00	30.00	30.00	30.00	29.60	28.00	28.00	29.76
2010-2011	25.00	25.00	25.00	25.00	25.63	29.75	34.40						27.11
GREAT NORTHERN - North Dakota/Minnesota													
2006-2007	16.50	17.70	18.50	18.50	19.25	19.50	NA	NA	NA	NA	NA	NA	18.33
2007-2008	30.00	30.00	30.00	30.00	30.25	31.25	33.00	NA	NA	NA	NA	NA	30.64
2008-2009	40.33	NA	NA	NA	34.00	NA	NA	NA	NA	NA	NA	NA	37.17
2009-2010	29.67	29.00	29.00	30.00	30.00	30.00	30.00	30.00	NA	NA	NA	NA	29.71
2010-2011	20.00	20.00	NA	22.75	23.19	25.75	29.50						23.53

NA=Not Available
W=Withdrawn

**Dealer Monthly Average Price
Per Cwt By Crop Year Fob**

	SEP	OCT	NOV	DEC	JAN	FEB	MAR	APR	MAY	JUN	JUL	AUG	AVG
BLACK - Michigan													
2006-2007	26.17	27.25	28.06	28.67	29.69	31.06	33.13	33.50	32.70	33.75	33.50	33.75	30.94
2007-2008	35.17	36.50	37.13	36.17	38.50	40.13	42.83	49.25	49.75	50.00	51.70	54.50	43.47
2008-2009	52.25	50.00	43.00	42.00	45.00	45.13	43.50	44.13	46.67	49.75	49.50	49.50	46.70
2009-2010	45.50	44.75	47.75	47.92	47.94	48.38	47.60	47.50	47.50	46.50	42.00	39.13	46.04
2010-2011	32.75	33.25	35.40	35.50	37.88	42.50	49.00						38.04
BLACK - North Dakota/Minnesota													
2006-2007	22.50	22.50	25.50	26.50	27.50	28.19	29.00	29.50	28.70	28.50	28.50	28.88	27.15
2007-2008	30.67	31.90	32.50	33.17	34.75	36.63	39.13	42.38	42.75	44.50	46.20	47.50	38.51
2008-2009	47.50	50.00	36.50	37.00	40.00	39.88	37.38	40.75	42.25	43.50	43.50	49.50	42.31
2009-2010	NA	39.50	43.00	42.25	42.00	48.50	NA	NA	44.50	44.50	40.50	39.33	42.68
2010-2011	29.00	30.13	34.00	35.00	35.75	39.17	43.80						35.26
PINK - Idaho/Washington													
2006-2007	27.83	27.50	28.25	28.00	28.25	29.50	31.50	31.50	32.30	32.50	32.50	33.25	30.24
2007-2008	35.17	35.70	36.50	36.50	36.56	38.06	39.75	NA	NA	NA	NA	NA	36.89
2008-2009	NA	NA	NA	NA	50.00	50.00	51.06	50.17	49.83	49.50	49.50	NA	50.01
2009-2010	45.83	45.50	44.50	44.33	44.13	44.67	44.60	44.25	43.25	42.50	41.13	40.17	43.74
2010-2011	NA	38.81	39.00	39.00	39.00	39.75	43.00						39.76
PINK - North Dakota/Minnesota													
2006-2007	23.17	23.50	23.75	24.17	25.75	24.75	24.63	25.00	27.00	NA	NA	NA	24.64
2007-2008	NA	31.88	32.50	32.50	32.63	34.00	35.17	NA	NA	NA	NA	NA	33.11
2008-2009	NA	NA	NA	NA	NA	NA	NA	NA	NA	NA	NA	NA	NA
2009-2010	36.75	NA	NA	NA	NA	NA	NA	NA	NA	35.00	35.38	33.81	35.24
2010-2011	31.50	32.25	33.80	34.50	36.50	39.00	44.00						35.94
GARBANZO - Idaho/Washington													
2006-2007	36.83	37.90	38.88	38.17	NA	37.00	37.38	37.38	37.20	36.50	36.50	36.00	37.25
2007-2008	38.33	40.70	41.00	39.67	39.38	39.81	41.42	45.17	46.25	51.00	51.30	52.25	43.86
2008-2009	52.50	NA	NA	NA	39.50	37.63	36.40	35.25	34.75	35.50	36.94	38.63	38.57
2009-2010	38.50	38.75	40.69	40.33	40.38	39.50	39.10	39.50	38.63	37.80	37.50	39.50	39.18
2010-2011	39.63	41.08	41.90	42.00	43.75	47.25	51.00						43.80
GARBANZO - North Dakota/Montana													
2006-2007	NA	NA	NA	NA	NA	NA	NA	NA	NA	NA	NA	NA	NA
2007-2008	NA	NA	NA	NA	NA	NA	NA	NA	NA	NA	NA	NA	NA
2008-2009	NA	NA	NA	NA	NA	NA	NA	NA	NA	NA	NA	NA	NA
2009-2010	NA	NA	NA	NA	NA	NA	NA	NA	NA	NA	NA	NA	NA
2010-2011	NA	NA	NA	NA	35.00	NA	NA						35.00

NA=Not Available
W=Withdrawn

Grower Monthly Average Price Per Cwt By Crop Year Fob

	SEP	OCT	NOV	DEC	JAN	FEB	MAR	APR	MAY	JUN	JUL	AUG	AVG
BLACK - Michigan													
2006-2007	NA	20.00	21.13	21.50	22.13	23.00	23.63	26.06	26.50	26.50	26.50	26.38	23.94
2007-2008	26.50	30.00	30.13	30.50	30.56	31.75	33.69	35.42	NA	NA	NA	NA	31.07
2008-2009	42.25	NA	NA	NA	32.50	32.50	32.00	30.63	32.88	33.00	33.50	NA	33.66
2009-2010	30.00	35.00	35.00	36.00	37.33	39.00	39.25	39.25	39.81	40.06	NA	NA	37.07
2010-2011	NA	NA	28.75	29.19	29.19	29.63	NA						29.19
BLACK - North Dakota/Minnesota													
2006-2007	17.50	17.50	17.88	19.50	19.88	20.50	22.50	22.50	22.50	22.50	22.25	22.50	20.63
2007-2008	22.83	23.50	24.50	24.50	25.50	27.75	29.50	31.40	29.50	NA	NA	NA	26.55
2008-2009	35.00	NA	NA	NA	28.88	30.00	29.90	29.50	29.75	30.00	30.00	NA	30.38
2009-2010	27.67	28.25	29.25	30.00	30.00	30.00	30.00	30.00	30.00	30.00	30.00	29.67	29.57
2010-2011	19.50	20.38	22.60	23.00	24.13	27.88	31.60						24.16
PINK - Idaho/Washington													
2006-2007	20.33	21.00	21.00	21.00	21.25	21.50	21.83	22.25	22.50	22.50	22.50	23.50	21.76
2007-2008	25.50	26.30	26.50	26.50	26.88	29.63	31.67	32.00	NA	NA	NA	NA	28.12
2008-2009	37.50	37.50	37.50	37.50	38.50	38.63	38.00	34.00	34.00	NA	NA	NA	37.01
2009-2010	32.67	31.00	31.00	31.00	30.67	30.50	30.60	30.50	30.00	30.00	29.50	30.00	30.62
2010-2011	NA	24.50	24.50	24.50	24.75	26.50	29.40						25.69
PINK - North Dakota/Minnesota													
2006-2007	17.17	17.50	17.50	17.50	18.00	19.50	19.50	19.50	19.50	19.50	19.50	19.50	18.68
2007-2008	23.50	23.50	23.50	23.50	23.50	24.63	26.00	NA	NA	NA	NA	NA	24.02
2008-2009	NA	NA	NA	NA	NA	28.50	28.50	NA	NA	NA	NA	NA	28.50
2009-2010	28.00	25.00	NA	NA	NA	NA	28.00	28.00	NA	28.00	28.00	28.00	27.57
2010-2011	NA	NA	21.00	21.00	21.63	26.00	28.40						23.61
GARBANZO - Idaho/Washington													
2006-2007	25.50	27.10	27.88	28.50	28.83	28.38	29.50	29.50	29.50	29.50	29.50	29.00	28.56
2007-2008	30.50	32.50	32.50	31.17	29.88	31.38	32.83	34.60	35.50	40.50	40.50	42.50	34.53
2008-2009	42.50	40.00	40.00	NA	29.00	28.75	27.00	25.00	25.38	25.80	27.25	30.50	31.02
2009-2010	28.70	28.88	30.75	31.67	30.75	30.50	29.40	31.00	30.50	29.20	28.00	27.50	29.74
2010-2011	28.00	29.25	31.00	31.50	31.88	33.13	35.30						31.44
GARBANZO - North Dakota/Montana													
2006-2007	NA	NA	NA	NA	NA	NA	NA	NA	NA	NA	NA	NA	NA
2007-2008	NA	NA	NA	NA	NA	NA	NA	NA	NA	NA	NA	NA	NA
2008-2009	NA	NA	NA	NA	NA	NA	NA	NA	NA	NA	NA	NA	NA
2009-2010	NA	NA	NA	NA	NA	NA	NA	NA	NA	NA	NA	NA	NA
2010-2011	NA	NA	29.00	29.00	30.13	33.50	33.50						31.03

NA=Not Available
W=Withdrawn

Dealer Monthly Average Price Per Cwt By Crop Year Fob

	SEP	OCT	NOV	DEC	JAN	FEB	MAR	APR	MAY	JUN	JUL	AUG	AVG
PEA BEAN - Michigan No 1's													
2006-2007	24.50	23.90	24.38	25.17	26.44	27.50	31.00	32.69	32.55	33.50	33.50	33.75	29.07
2007-2008	35.08	36.25	36.56	37.17	38.25	39.88	49.50	50.30	51.38	52.00	52.90	54.50	44.48
2008-2009	54.50	NA	NA	NA	35.50	35.13	33.40	32.00	32.63	34.00	36.00	36.50	36.63
2009-2010	35.50	39.00	40.50	42.08	41.83	43.00	43.00	43.00	41.19	39.50	38.83	37.00	40.37
2010-2011	33.50	32.88	33.60	35.50	37.25	41.50	42.50						36.68
PEA BEAN - North Dakota/Minnesota													
2006-2007	23.00	23.00	23.31	23.83	24.63	25.50	27.25	28.25	28.10	28.50	29.50	29.75	26.22
2007-2008	30.83	31.50	32.44	33.42	35.13	36.50	42.00	47.75	48.50	49.50	50.50	50.50	40.71
2008-2009	50.50	NA	NA	NA	35.50	32.88	30.80	29.00	29.00	29.00	30.50	32.00	33.24
2009-2010	32.25	32.00	NA	38.50	38.50	39.38	39.50	39.25	37.00	36.50	35.83	34.50	36.66
2010-2011	29.00	29.50	30.80	31.75	34.67	39.00	41.50						33.75
LIGHT RED KIDNEY - Michigan													
2006-2007	29.17	30.30	31.75	32.33	33.75	35.44	36.50	36.50	37.40	38.50	39.80	42.50	35.33
2007-2008	48.25	52.40	54.25	54.83	55.50	57.00	NA	NA	NA	NA	NA	NA	53.71
2008-2009	NA	NA	NA	NA	NA	57.83	57.50	NA	NA	NA	NA	NA	57.67
2009-2010	45.17	44.50	NA	NA	NA	38.50	43.50	42.50	42.00	40.90	40.25	39.38	41.86
2010-2011	NA	41.00	41.00	41.00	41.63	46.13	49.00						43.29
LIGHT RED KIDNEY - Colorado													
2006-2007	30.83	31.50	31.88	33.17	34.63	35.50	37.25	37.50	38.40	39.13	39.80	41.50	35.92
2007-2008	46.17	52.70	54.38	54.83	56.00	57.00	60.00	65.00	NA	54.50	NA	NA	55.62
2008-2009	NA	NA	NA	63.50	NA	NA	60.50	NA	NA	49.00	48.50	48.00	53.90
2009-2010	45.75	45.00	45.63	45.17	44.63	44.50	44.40	43.50	41.67	41.50	40.75	40.17	43.56
2010-2011	40.00	40.25	41.20	42.00	42.38	46.13	50.00						43.14
LIGHT RED KIDNEY -Minnesota/Wisconsin													
2006-2007	29.50	29.50	31.50	32.67	33.88	34.75	37.50	37.50	38.00	NA	NA	45.00	34.98
2007-2008	48.25	51.90	53.25	53.83	55.25	57.00	NA	NA	NA	NA	NA	NA	53.25
2008-2009	NA	NA	NA	NA	59.50	57.00	NA	NA	NA	NA	NA	NA	58.25
2009-2010	NA	NA	44.50	44.25	NA	44.44	43.90	42.50	41.00	40.00	39.38	39.00	42.11
2010-2011	40.00	39.25	39.00	39.00	40.88	44.50	49.40						41.72

NA=Not Available

W=Withdrawn

**Grower Monthly Average Price
Per Cwt By Crop Year Fob**

	SEP	OCT	NOV	DEC	JAN	FEB	MAR	APR	MAY	JUN	JUL	AUG	AVG
PEA BEAN - Michigan No 1's													
2006-2007	18.25	17.65	17.44	18.25	19.50	20.50	21.44	22.63	22.70	22.75	22.75	24.00	20.66
2007-2008	27.00	30.50	30.50	30.50	31.50	34.00	35.63	38.50	38.50	NA	NA	40.13	33.68
2008-2009	NA	NA	NA	NA	25.00	25.00	24.80	24.00	23.75	26.90	27.50	NA	25.28
2009-2010	29.75	30.25	30.50	30.50	35.00	35.00	35.00	34.00	33.00	33.00	29.00	29.00	32.00
2010-2011	24.00	25.38	26.50	26.50	28.50	30.00	NA						26.81
PEA BEAN - North Dakota/Minnesota													
2006-2007	17.33	17.50	16.25	16.75	17.25	19.50	20.50	20.50	20.50	20.50	20.70	22.00	19.11
2007-2008	24.67	24.00	24.00	24.00	25.50	27.88	32.50	35.00	35.00	35.88	NA	NA	28.84
2008-2009	36.50	24.50	24.50	24.50	22.00	22.00	22.00	21.63	21.50	23.40	24.25	24.50	24.27
2009-2010	25.25	24.75	27.00	27.00	30.00	29.25	29.80	29.13	29.38	27.80	27.50	26.38	27.77
2010-2011	21.38	21.13	21.50	21.75	22.81	26.00	30.50						23.58
LIGHT RED KIDNEY - Michigan													
2006-2007	21.50	23.10	23.75	24.00	25.00	25.50	25.50	25.88	26.00	NA	NA	NA	24.47
2007-2008	35.50	40.00	40.00	40.00	40.38	40.50	NA	NA	NA	NA	NA	NA	39.40
2008-2009	52.00	NA	NA	NA	NA	NA	NA	NA	NA	NA	NA	NA	52.00
2009-2010	35.00	NA	NA	NA	NA	NA	NA	NA	NA	NA	NA	NA	35.00
2010-2011	NA	31.50	31.50	31.50	31.50	31.50	NA						31.50
LIGHT RED KIDNEY - Colorado/Nebraska													
2006-2007	23.00	22.00	25.25	27.00	27.75	27.63	27.50	31.00	31.00	31.00	31.00	33.13	28.11
2007-2008	37.17	42.00	42.00	42.00	44.63	45.00	45.00	45.90	46.50	46.50	46.50	46.50	44.14
2008-2009	54.33	NA	NA	NA	NA	NA	NA	NA	NA	NA	NA	40.00	47.17
2009-2010	37.00	35.00	35.00	35.00	35.00	35.00	35.00	33.50	32.63	32.20	32.00	32.00	34.11
2010-2011	29.88	29.50	29.50	29.50	30.75	33.88	36.20						31.32
LIGHT RED KIDNEY -Minnesota/Wisconsin													
2006-2007	NA	NA	NA	NA	NA	NA	NA	NA	NA	NA	NA	NA	NA
2007-2008	NA	NA	NA	NA	NA	NA	NA	NA	NA	NA	NA	NA	NA
2008-2009	NA	NA	NA	NA	NA	NA	NA	NA	NA	NA	NA	NA	NA
2009-2010	NA	NA	NA	NA	NA	NA	NA	NA	NA	NA	NA	NA	NA
2010-2011	NA	NA	NA	NA	31.25	34.88	37.60						34.58

NA=Not Available

W=Withdrawn

**Dealer Monthly Average Price
Per Cwt By Crop Year Fob**

	SEP	OCT	NOV	DEC	JAN	FEB	MAR	APR	MAY	JUN	JUL	AUG	AVG
DARK RED KIDNEY - Michigan													
2006-2007	29.17	29.90	30.75	31.42	31.75	32.38	33.50	34.88	36.30	36.50	36.50	39.38	33.54
2007-2008	41.00	NA	NA	NA	NA	57.50	NA	NA	NA	NA	NA	NA	49.25
2008-2009	NA	NA	NA	NA	NA	58.50	58.50	NA	49.00	49.00	49.00	NA	52.80
2009-2010	NA	NA	NA	NA	NA	NA	NA	43.69	41.83	41.50	41.25	40.50	41.75
2010-2011	NA	NA	NA	NA	NA	50.50	NA						50.50
DARK RED KIDNEY - Minnesota/Wisconsin													
2006-2007	29.17	29.50	30.13	30.83	31.88	33.50	34.75	35.50	36.00	36.00	36.00	41.00	33.69
2007-2008	41.00	49.33	50.50	51.00	NA	51.00	NA	NA	NA	NA	NA	NA	48.57
2008-2009	NA	NA	NA	NA	NA	57.50	57.50	NA	NA	NA	NA	NA	57.50
2009-2010	NA	NA	45.50	45.00	NA	44.63	NA	43.75	41.67	41.10	40.50	40.50	42.83
2010-2011	NA	41.00	42.20	44.50	46.50	50.63	54.00						46.47
SMALL RED - Idaho/Washington													
2006-2007	28.17	28.30	29.50	29.50	30.13	31.50	31.50	32.00	32.50	32.50	32.50	33.25	30.95
2007-2008	35.17	38.40	41.63	43.17	47.00	49.00	50.25	51.50	NA	NA	NA	NA	44.52
2008-2009	58.00	58.00	58.00	NA	50.00	50.63	50.40	48.00	48.67	NA	NA	NA	52.71
2009-2010	43.50	44.25	44.38	44.50	43.88	44.50	44.10	43.63	42.88	42.50	41.25	40.50	43.32
2010-2011	39.00	41.00	43.40	44.00	45.88	48.50	53.60						45.05
SMALL RED - Michigan													
2006-2007	25.50	26.90	27.25	27.80	29.63	31.25	31.56	32.50	32.50	32.50	32.70	32.88	30.25
2007-2008	36.17	41.05	43.75	45.67	48.00	49.63	NA	NA	NA	NA	NA	NA	44.05
2008-2009	NA	NA	NA	NA	45.00	43.75	42.30	41.33	41.67	NA	NA	NA	42.81
2009-2010	35.83	35.00	38.00	37.00	37.00	36.88	37.00	NA	35.33	35.83	35.50	35.00	36.22
2010-2011	NA	27.63	26.20	30.00	45.00	49.17	53.60						38.60
SMALL RED - North Dakota/Minnesota													
2006-2007	23.17	23.50	24.13	24.50	25.17	NA	NA	25.00	NA	NA	NA	NA	24.25
2007-2008	NA	39.00	37.38	38.67	40.38	42.88	43.67	NA	NA	NA	NA	NA	40.33
2008-2009	NA	NA	58.00	NA	NA	NA	NA	38.50	38.83	NA	NA	NA	45.11
2009-2010	36.75	NA	NA	NA	NA	34.50	34.50	34.50	NA	32.50	33.00	32.00	33.96
2010-2011	NA	NA	NA	NA	NA	47.50	NA						47.50

NA=Not Available

W=Withdrawn

Grower Monthly Average Price Per Cwt By Crop Year Fob

	SEP	OCT	NOV	DEC	JAN	FEB	MAR	APR	MAY	JUN	JUL	AUG	AVG
DARK RED KIDNEY - Michigan													
2006-2007	NA	NA	23.00	23.00	24.00	25.13	25.38	25.00	NA	NA	NA	35.00	25.79
2007-2008	35.00	NA	NA	NA	NA	NA	NA	NA	NA	NA	NA	NA	35.00
2008-2009	35.00	NA	NA	NA	NA	NA	NA	NA	NA	NA	NA	NA	35.00
2009-2010	NA	NA	NA	NA	NA	NA	NA	NA	NA	NA	NA	NA	NA
2010-2011	NA	NA	NA	NA	NA	NA	NA	NA					NA
DARK RED KIDNEY - Minnesota/Wisconsin													
2006-2007	22.92	23.55	23.50	23.50	25.50	25.50	25.50	28.38	30.00	30.00	30.00	34.00	26.86
2007-2008	34.00	37.00	37.00	37.00	37.00	NA	NA	NA	NA	NA	NA	NA	36.40
2008-2009	NA	NA	NA	NA	NA	NA	NA	NA	NA	NA	NA	NA	NA
2009-2010	NA	NA	34.25	33.50	33.50	34.00	34.00	34.00	NA	NA	NA	NA	33.88
2010-2011	32.38	32.50	32.90	32.00	37.50	41.00	43.60						35.98
SMALL RED - Idaho/Washington													
2006-2007	21.50	21.10	21.00	22.00	22.00	22.50	22.50	23.63	24.00	24.00	24.00	25.33	22.80
2007-2008	25.50	27.90	29.75	30.00	34.63	37.88	41.00	41.00	40.50	NA	NA	NA	34.24
2008-2009	42.50	43.13	41.50	41.50	41.00	39.38	39.00	NA	NA	NA	NA	NA	41.14
2009-2010	33.33	31.00	31.00	31.00	31.00	30.25	30.40	30.25	30.00	30.00	30.00	30.00	30.69
2010-2011	NA	25.13	26.40	28.00	28.25	29.25	30.50						27.92
SMALL RED - Michigan													
2006-2007	19.00	18.60	18.88	19.50	19.88	20.50	20.50	28.38	30.00	30.00	30.00	34.00	24.10
2007-2008	NA	29.50	30.00	30.00	36.00	36.75	NA	NA	NA	NA	NA	NA	32.45
2008-2009	44.50	NA	NA	NA	26.00	26.00	26.00	26.00	26.00	26.00	26.25	26.50	28.14
2009-2010	26.50	26.50	26.50	26.50	26.50	29.00	29.50	29.63	30.00	30.00	30.00	NA	28.24
2010-2011	NA	27.63	29.20	30.00	30.00	NA	NA						29.21
SMALL RED - North Dakota/Minnesota													
2006-2007	17.50	17.50	17.75	18.00	18.50	19.88	19.50	19.50	19.50	19.50	19.50	19.50	18.84
2007-2008	23.50	24.20	24.25	24.50	25.13	25.50	26.00	NA	NA	NA	NA	NA	24.73
2008-2009	NA	NA	NA	NA	NA	30.50	30.50	NA	NA	NA	NA	NA	30.50
2009-2010	NA	NA	NA	NA	NA	NA	28.00	28.00	NA	28.00	28.00	28.00	28.00
2010-2011	NA	NA	21.00	21.00	NA	NA	NA						21.00

NA=Not Available

W=Withdrawn

**Dealer Monthly Average Price
Per Cwt By Crop Year Fob**

	SEP	OCT	NOV	DEC	JAN	FEB	MAR	APR	MAY	JUN	JUL	AUG	AVG
BREWER LENTIL - Idaho/Washington													
2006-2007	17.25	17.75	18.31	19.00	19.25	19.50	19.50	19.63	19.75	19.75	19.75	22.25	19.31
2007-2008	21.00	30.50	35.25	37.50	38.19	38.50	39.50	40.40	40.50	40.50	40.50	NA	36.58
2008-2009	NA	NA	NA	NA	35.67	37.50	38.35	40.06	41.00	41.30	41.00	34.50	38.67
2009-2010	31.75	30.75	29.63	34.75	36.25	37.25	36.50	36.25	36.25	36.50	NA	NA	34.59
2010-2011	32.08	39.13	40.70	41.00	42.13	45.50	45.50						40.86
PARDINA LENTIL - Idaho/Washington													
2006-2007	18.53	21.30	24.75	25.00	25.38	25.50	25.50	25.50	25.50	25.50	25.50	26.25	24.52
2007-2008	30.58	27.70	39.75	40.50	40.25	40.06	40.88	41.50	41.00	40.75	41.10	NA	38.55
2008-2009	NA	52.00	NA	40.00	35.75	37.63	38.95	40.75	40.88	41.90	42.50	34.50	40.49
2009-2010	31.95	29.75	29.63	31.00	35.83	35.75	36.55	37.13	37.00	36.50	NA	NA	34.11
2010-2011	35.00	37.06	36.70	36.50	36.50	37.75	37.30						36.69
GREEN SPLIT PEA - Idaho/Washington													
2006-2007	13.63	13.85	14.75	14.75	15.31	15.63	16.38	18.06	18.33	19.03	19.50	19.50	16.56
2007-2008	20.50	24.10	26.63	27.33	27.88	28.38	30.50	32.50	32.50	32.00	31.20	31.50	28.75
2008-2009	31.50	NA	NA	26.00	24.00	24.63	25.44	26.13	25.88	25.50	25.00	20.50	25.46
2009-2010	20.15	20.50	19.81	20.50	20.94	21.06	20.90	20.50	20.25	20.00	19.50	18.58	20.22
2010-2011	NA	19.94	20.93	21.50	21.88	22.25	23.00						21.58
WHOLE GREEN PEA - Idaho/Washington													
2006-2007	10.69	11.50	11.91	12.83	13.19	13.44	13.94	14.19	14.53	15.06	15.20	15.31	13.48
2007-2008	16.06	18.40	20.41	21.08	22.88	24.63	26.69	27.95	27.63	27.63	27.55	27.50	24.03
2008-2009	26.00	21.75	20.00	19.00	19.94	21.19	21.65	22.69	22.88	22.30	21.50	15.83	21.23
2009-2010	15.30	15.59	16.22	17.17	17.50	16.83	NA	NA	15.38	15.50	NA	15.00	16.05
2010-2011	14.67	16.25	16.80	17.00	17.44	17.88	17.80						16.83
WHOLE GREEN PEA - North Dakota/Montana													
2006-2007	7.94	8.53	9.13	9.25	10.19	10.50	12.75	13.00	13.25	NA	NA	NA	10.50
2007-2008	NA	17.50	17.75	19.50	19.50	21.25	NA	23.00	NA	NA	NA	NA	19.75
2008-2009	NA	NA	NA	NA	NA	18.33	18.06	16.50	16.19	17.63	NA	12.83	16.59
2009-2010	NA	13.00	14.25	NA	NA	NA	NA	10.20	NA	12.19	NA	NA	12.41
2010-2011	NA	NA	14.75	15.08	15.21	12.98	NA						14.51

NA=Not Available
W=Withdrawn

Grower Monthly Average Price Per Cwt By Crop Year Fob

	SEP	OCT	NOV	DEC	JAN	FEB	MAR	APR	MAY	JUN	JUL	AUG	AVG
BREWER LENTIL - Idaho/Washington													
2006-2007	13.06	14.15	14.25	14.50	14.59	14.81	14.75	14.94	15.05	15.25	15.25	18.00	14.88
2007-2008	20.38	24.40	28.00	30.00	30.38	30.13	32.38	34.38	33.88	34.00	34.20	34.50	30.55
2008-2009	36.38	38.00	NA	NA	27.75	28.75	29.00	31.50	32.38	32.10	30.00	25.75	31.16
2009-2010	23.90	23.00	23.63	25.83	28.67	29.25	29.00	29.00	28.50	28.00	27.50	22.50	26.57
2010-2011	25.00	29.00	31.00	31.00	31.00	32.50	35.50						30.71
PARDINA LENTIL - Idaho/Washington													
2006-2007	13.75	16.30	18.75	19.50	19.50	19.50	19.50	19.50	19.45	19.25	19.35	20.00	18.70
2007-2008	24.06	30.40	31.00	32.17	31.38	31.63	32.75	33.80	33.88	34.00	34.20	NA	31.75
2008-2009	38.00	38.00	NA	30.00	29.00	29.00	29.40	31.50	32.38	32.50	30.67	25.75	31.47
2009-2010	23.90	23.00	22.75	25.17	26.38	28.25	28.80	29.00	28.50	28.00	27.17	22.00	26.08
2010-2011	24.50	29.00	30.50	30.50	30.50	30.63	30.00						29.38
WHOLE GREEN PEA - Idaho/Washington													
2006-2007	6.44	6.70	7.19	7.58	7.81	8.69	9.50	10.19	10.33	10.63	10.63	10.72	8.87
2007-2008	11.78	13.00	13.50	14.08	15.56	17.31	18.44	18.90	18.75	18.75	18.70	18.33	16.43
2008-2009	17.25	14.75	14.75	13.50	13.63	13.81	14.45	14.88	15.25	15.90	14.50	10.63	14.44
2009-2010	9.50	9.50	9.38	9.83	10.00	9.75	9.75	9.75	9.75	9.75	9.50	9.17	9.64
2010-2011	9.38	10.13	10.40	10.50	10.75	11.50	12.50						10.74
WHOLE GREEN PEA -North Dakota/Montana													
2006-2007	5.83	6.17	6.71	7.19	7.53	7.89	9.38	10.06	10.48	10.13	9.95	9.79	8.43
2007-2008	10.50	13.06	14.27	16.63	17.14	18.42	19.83	18.15	NA	NA	NA	NA	16.00
2008-2009	19.00	NA	NA	NA	NA	14.14	12.81	12.06	13.13	13.08	12.13	10.93	13.41
2009-2010	7.26	7.92	9.48	10.50	10.63	9.58	9.33	8.34	8.13	7.57	8.15	7.66	8.71
2010-2011	8.40	9.32	10.46	10.71	11.47	12.98	12.23						10.80

NA=Not Available
W=Withdrawn

**Dealer Monthly Average Price
Per Cwt By Crop Year Fob**

	SEP	OCT	NOV	DEC	JAN	FEB	MAR	APR	MAY	JUN	JUL	AUG	AVG
AUSTRIAN WINTER PEA - Idaho/Washington													
2006-2007	11.56	11.85	11.92	11.50	12.25	12.25	NA	NA	NA	NA	NA	NA	11.89
2007-2008	19.50	19.50	NA	NA	NA	NA	30.00	30.00	NA	NA	NA	NA	24.75
2008-2009	NA	39.50	NA	NA	NA	NA	NA	NA	NA	NA	NA	NA	39.50
2009-2010	30.60	31.00	32.00	32.00	NA	NA	NA	NA	NA	NA	24.00	NA	29.92
2010-2011	23.50	NA	24.50	24.50	24.50	24.50	24.60						24.35
RICHLEA LENTIL - North Dakota/Montana													
2006-2007	NA	NA	12.75	13.50	13.50	13.50	NA	NA	NA	NA	NA	NA	13.31
2007-2008	NA	NA	32.50	33.33	34.50	35.00	NA	NA	NA	NA	NA	NA	33.83
2008-2009	NA	NA	NA	NA	NA	35.50	37.00	37.75	39.38	41.00	NA	31.50	37.02
2009-2010	32.50	29.83	32.50	NA	NA	35.50	NA	NA	NA	NA	NA	NA	32.58
2010-2011	NA	NA	39.00	39.00	39.13	39.50	NA						39.16
YELLOW SPLIT PEA - Idaho/Washington													
2006-2007	13.38	13.75	14.50	15.00	15.38	15.50	16.19	17.00	17.60	17.94	18.45	18.75	16.12
2007-2008	19.44	20.25	25.50	26.00	26.50	27.75	29.00	30.20	30.00	NA	30.33	NA	26.50
2008-2009	NA	NA	NA	NA	23.00	23.50	NA	NA	NA	NA	NA	NA	23.25
2009-2010	NA	NA	NA	20.13	NA	NA	18.79	19.00	NA	NA	NA	NA	19.31
2010-2011	NA	18.75	NA	NA	21.50	21.50	21.50						20.81
WHOLE YELLOW PEA - Idaho/Washington													
2006-2007	10.19	10.80	11.00	11.58	12.31	13.06	13.69	13.75	14.15	14.25	14.25	14.25	12.77
2007-2008	15.06	16.81	20.00	20.25	21.25	21.50	25.50	26.75	NA	NA	26.50	25.50	21.91
2008-2009	NA	NA	NA	NA	NA	NA	NA	NA	NA	NA	NA	NA	NA
2009-2010	NA	NA	NA	16.75	NA	NA	NA	NA	NA	NA	NA	NA	16.75
2010-2011	NA	18.25	NA	NA	16.50	16.50	NA						17.08
WHOLE YELLOW PEA - North Dakota/Montana													
2006-2007	7.25	8.00	8.69	9.00	9.33	9.50	11.50	11.94	12.25	NA	NA	NA	9.72
2007-2008	15.00	15.00	16.75	18.00	18.25	NA	20.13	19.44	NA	NA	NA	NA	17.51
2008-2009	NA	NA	NA	NA	NA	15.00	NA	NA	14.60	13.63	NA	NA	14.41
2009-2010	NA	12.00	11.50	NA	NA	NA	NA	NA	NA	NA	NA	NA	11.75
2010-2011	NA	NA	NA	12.80	13.30	15.65	11.94						13.42

NA=Not Available
W=Withdrawn

Grower Monthly Average Price Per Cwt By Crop Year Fob

	SEP	OCT	NOV	DEC	JAN	FEB	MAR	APR	MAY	JUN	JUL	AUG	AVG
AUSTRIAN WINTER PEA - Idaho/Washington													
2006-2007	7.50	7.50	7.83	NA	NA	NA	NA	NA	NA	NA	NA	NA	7.61
2007-2008	13.00	13.00	13.00	13.00	NA	NA	NA	NA	NA	NA	18.00	NA	14.00
2008-2009	25.00	25.00	13.00	NA	NA	NA	NA	NA	NA	NA	NA	NA	21.00
2009-2010	18.00	18.00	18.00	18.00	18.00	18.00	18.00	18.00	18.00	18.00	18.00	18.00	18.00
2010-2011	17.00	18.00	18.00	18.00	18.00	18.00	18.00						17.86
RICHLEA LENTIL - North Dakota/Montana													
2006-2007	6.58	6.70	9.50	9.83	9.88	10.00	10.63	12.75	13.20	13.50	13.80	14.19	10.88
2007-2008	14.75	23.82	24.50	24.50	25.50	27.75	29.75	31.90	NA	NA	33.00	33.00	26.85
2008-2009	NA	NA	NA	NA	NA	27.33	27.20	28.50	31.00	31.67	30.50	26.13	28.90
2009-2010	31.30	22.00	28.88	31.00	30.88	29.13	27.55	29.63	28.50	28.00	28.00	20.50	27.95
2010-2011	29.17	31.00	31.50	31.50	31.50	32.13	30.00						30.97
WHOLE YELLOW PEA - Idaho/Washington													
2006-2007	5.78	6.10	6.66	7.04	7.13	7.94	8.63	8.75	9.20	9.50	9.60	9.75	8.01
2007-2008	10.69	11.80	13.00	13.33	14.81	16.06	17.44	17.90	17.50	NA	17.63	14.75	14.99
2008-2009	13.15	11.63	11.75	10.75	10.75	10.75	10.75	NA	9.75	9.80	9.26	9.50	10.71
2009-2010	8.80	8.75	8.75	9.50	9.19	10.00	9.70	9.50	9.50	9.50	9.25	8.00	9.20
2010-2011	7.75	8.50	9.06	9.25	9.50	10.19	11.00						9.32
WHOLE YELLOW PEA - North Dakota/Montana													
2006-2007	5.43	5.71	6.68	7.28	7.28	7.27	8.09	9.83	10.62	10.56	9.56	9.31	8.14
2007-2008	10.06	11.83	13.33	15.12	16.12	17.29	17.19	15.57	14.73	NA	NA	13.46	14.47
2008-2009	13.00	NA	NA	NA	NA	9.66	9.37	8.38	8.49	9.27	8.88	7.78	9.35
2009-2010	6.54	6.50	7.88	8.50	8.57	8.04	7.34	6.95	6.79	6.39	6.88	6.67	7.25
2010-2011	6.91	7.75	8.61	9.40	10.56	12.25	11.94						9.63

NA=Not Available
W=Withdrawn

**Dealer Monthly Average Price
Per Cwt By Crop Year Fob**

	SEP	OCT	NOV	DEC	JAN	FEB	MAR	APR	MAY	JUN	JUL	AUG	AVG
BABY LIMA - California													
2006-2007	42.75	46.50	47.56	47.67	47.50	47.50	47.50	NA	49.50	48.75	NA	NA	47.25
2007-2008	41.50	41.50	41.88	42.00	42.25	43.63	44.00	NA	NA	NA	NA	NA	42.39
2008-2009	65.50	65.50	NA	NA	59.00	58.19	58.25	NA	NA	NA	54.00	51.67	58.87
2009-2010	50.33	50.00	NA	44.50	44.00	40.75	40.75	NA	NA	NA	NA	37.50	43.98
2010-2011	NA	40.00	40.00	40.00	40.00	40.25	49.40						41.61
LARGE LIMA - California													
2006-2007	54.50	NA	62.25	64.50	65.38	66.25	66.50	NA	72.00	72.00	NA	73.00	66.26
2007-2008	62.50	62.50	62.50	62.50	62.63	63.50	64.88	65.40	NA	75.00	75.00	NA	65.64
2008-2009	NA	NA	75.00	74.17	73.50	73.44	73.30	73.00	73.06	73.00	73.00	72.38	73.39
2009-2010	72.17	72.50	72.13	73.00	72.19	70.81	70.38	NA	NA	69.50	NA	NA	71.59
2010-2011	NA	NA	61.00	61.00	60.25	59.00	59.00						60.05
BLACKEYE - California													
2006-2007	48.25	50.38	50.25	49.75	50.00	49.75	NA	NA	42.00	NA	NA	38.67	47.38
2007-2008	40.50	40.50	40.00	40.33	40.50	40.63	40.13	43.50	NA	44.50	44.50	NA	41.51
2008-2009	NA	NA	NA	NA	51.50	51.25	51.50	NA	53.25	NA	NA	52.33	51.97
2009-2010	53.50	NA	42.50	43.50	43.33	43.75	43.75	NA	NA	NA	NA	45.50	45.12
2010-2011	NA	41.00	41.30	43.00	43.00	43.00	43.00						42.38
GARBANZO - California													
2006-2007	40.00	NA	NA	NA	40.00	NA	NA	NA	NA	NA	NA	35.00	38.33
2007-2008	NA	NA	NA	NA	NA	NA	NA	NA	NA	NA	NA	NA	NA
2008-2009	NA	50.00	NA	NA	NA	NA	NA	NA	NA	46.00	NA	NA	48.00
2009-2010	NA	NA	NA	NA	NA	NA	NA	NA	NA	NA	46.00	NA	46.00
2010-2011	NA	NA	NA	NA	NA	NA	NA						NA

NA=Not Available
W=Withdrawn

Grower Monthly Average Price Per Cwt By Crop Year Fob

	SEP	OCT	NOV	DEC	JAN	FEB	MAR	APR	MAY	JUN	JUL	AUG	AVG
BABY LIMA - California													
2006-2007	NA	44.50	44.25	44.17	44.50	44.50	44.50	NA	NA	NA	NA	NA	44.40
2007-2008	40.00	40.00	40.00	40.00	40.00	40.75	41.50	NA	NA	NA	NA	NA	40.32
2008-2009	NA	60.50	55.00	NA	55.00	55.25	54.75	53.00	53.00	NA	49.83	49.00	53.93
2009-2010	49.00	44.50	43.50	42.50	40.50	39.00	39.17	NA	35.00	35.13	34.50	35.13	39.81
2010-2011	36.17	36.75	37.20	37.50	37.50	38.00							37.19
LARGE LIMA US No 1- California													
2006-2007	NA	NA	60.00	61.33	60.00	63.00	63.50	NA	NA	NA	NA	NA	61.57
2007-2008	60.00	60.00	60.13	60.00	60.00	61.25	62.50	NA	NA	NA	NA	NA	60.55
2008-2009	NA	70.00	70.00	70.00	70.00	70.00	70.00	70.00	70.00	NA	70.00	70.00	70.00
2009-2010	70.00	72.63	70.00	70.00	69.25	68.00	68.00	NA	NA	69.50	NA	NA	69.67
2010-2011	NA	NA	61.00	61.00	56.50	55.38	55.00						57.78
LARGE LIMA Canner Quality - California													
2006-2007	NA	NA	NA	NA	NA	NA	NA	NA	NA	NA	NA	NA	NA
2007-2008	NA	NA	NA	NA	NA	NA	NA	NA	NA	NA	NA	NA	NA
2008-2009	NA	NA	NA	NA	NA	NA	NA	NA	NA	NA	NA	NA	NA
2009-2010	NA	NA	NA	NA	NA	NA	NA	NA	NA	NA	NA	NA	NA
2010-2011	NA	NA	84.00	84.00	84.00	84.00	84.00						84.00
BLACKEYE - California													
2006-2007	NA	47.75	48.00	48.00	50.00	49.75	NA	NA	NA	NA	NA	NA	48.70
2007-2008	38.50	38.50	38.50	38.50	38.50	38.50	38.50	NA	NA	NA	NA	NA	38.50
2008-2009	NA	45.00	45.00	45.00	45.00	45.00	NA	NA	NA	NA	NA	NA	45.00
2009-2010	NA	39.00	39.00	39.00	39.00	39.00	39.25	NA	NA	NA	NA	NA	39.04
2010-2011	NA	38.75	39.00	39.25	39.63	39.75	40.00						39.40
GARBANZO - California													
2005-2006	33.25	NA	NA	NA	NA	NA	NA	NA	NA	NA	29.50	NA	31.38
2006-2007	33.25	NA	NA	NA	NA	NA	NA	NA	NA	NA	NA	33.50	33.38
2007-2008	34.63	34.50	NA	NA	NA	NA	NA	NA	NA	NA	NA	44.50	37.88
2008-2009	44.63	45.00	NA	NA	NA	NA	NA	NA	NA	40.00	NA	NA	43.21
2009-2010	NA	NA	NA	NA	NA	NA	NA						NA

NA=Not Available

W=Withdrawn

Dry Edible Beans, U.S. Production by Commercial Class (1,000 Cwt.)

Class	2010	2009	2008	2007	2006	5 Year Average
Pea Bean, (Navy)	4,766	3,332	4,542	3,832	4,353	4,165
Great Northern	1,403	999	1,598	1,186	1,190	1,275
Small White	71	71	0	10	46	40
Pinto	13,814	10,914	10,257	11,778	9,618	11,276
Dark Red Kidney	833	850	992	663	824	832
Light Red Kidney	966	967	1,023	813	770	908
Pink	586	497	557	578	731	590
Small Red	478	703	816	535	649	636
Cranberry	66	84	141	124	149	113
Black	4,661	3,010	2,923	2,803	2,661	3,212
Large Lima	399	333	317	302	239	318
Baby Lima	304	352	239	377	304	315
Blackeye	585	771	394	497	533	556
Garbanzo	1,939	1,444	1,118	1,515	1,539	1,511
Other	930	1,033	641	571	673	770
Total	31,801	25,360	25,558	25,584	24,279	26,516

Source: USDA, NASS. *Subject to revision.

USDA/KCCC Purchases of Dry Edible Beans, Peas, & Lentils Under PL480 Program for Export Distribution (MT)

CLASS	FY10	FY09	FY08	FY07	FY06	FY05
PEA BEAN	0	0	7,790	6,570	760	730
PINTO	25,580	37,900	33,660	24,700	10,840	17,020
GREAT NORTHERN	1,320	750	420	530	920	1,000
SMALL RED	1,280	370	1,210	2,950	2,080	3,170
BLACK	2,980	500	520	3,900	1,930	400
LIGHT RED KIDNEY	70	3,040	0	1,150	350	0
DARK RED KIDNEY	0	0	1,010	3,140	3,140	1,710
PINK	0	0	810	1,190	0	0
GARBANZO	180	1,260	3,660	1,410	0	0
LENTIL	27,450	39,180	74,870	49,310	49,310	102,710
GREEN PEA	8,630	14,110	15,150	15,850	17,140	19,730
SPLIT GREEN PEAS	0	9,860	9,450	4,010	4,870	6,150
YELLOW PEA	9,560	26,090	31,740	17,370	44,080	51,420
SPLIT YELLOW PEAS	92,190	100,940	71,690	66,990	25,040	21,180
TOTAL	169,240	234,000	251,980	199,070	160,460	160,460

Source: USDA Kansas City Commodities Corporation

Dry Edible Beans, Production by Commercial Class (1,000 cwt)

SMALL RED					
State	2010	2009	2008	2007	2006
ID	218	176	215	104	91
MI	173	404	425	253	390
MN	21	23	29	29	32
ND	17	35	85	74	68
WA	45	65	62	75	68
Total	474	703	816	535	649

SMALL WHITE					
State	2010	2009	2008	2007	2006
ID	9	13	0	10	28
OR	25	23	0	0	8
WA	0	35	0	0	10
Total	34	71	0	10	46

GREAT NORTHERN					
State	2010	2009	2008	2007	2006
ID	92	94	59	49	63
MI	0	0	0	0	10
NE	1166	779	1369	991	1030
ND	81	113	110	113	70
WY	46	13	60	33	17
Total	1385	999	1598	1186	1190

BABY LIMAS					
State	2010	2009	2008	2007	2006
CA	269	352	239	377	304
Total	269	352	239	377	304

LARGE LIMA					
State	2010	2009	2008	2007	2006
CA	409	400	317	302	239
Total	409	400	317	302	239

PINK					
State	2010	2009	2008	2007	2006
CA	0	0	0	0	3
ID	220	170	140	146	245
MN	93	104	143	134	116
ND	158	150	211	234	277
OR	9	0	0	11	0
WA	105	73	63	53	90
Total	585	497	557	578	731

CRANBERRY					
State	2010	2009	2008	2007	2006
CA	0	18	21	18	15
ID	9	11	12	18	19
MI	57	55	108	88	115
Total	66	84	141	124	149

GARBANZO					
State	2010	2009	2008	2007	2006
CA	271	284	116	114	198
ID	623	415	362	432	476
MT	106	18	17	86	71
ND	250	194	119	248	111
NE	0	0	0	0	9
OR	7	6	9	51	64
SD	58	27	29	44	73
WA	634	500	466	540	537
Total	1949	1444	1118	1515	1539

BLACK					
State	2010	2009	2008	2007	2006
CA	12	0	0	8	10
ID	108	69	38	46	65
MI	2304	1770	1691	1540	1670
MN	420	288	201	378	165
NE	123	79	69	0	57
ND	1436	610	731	652	520
NY	130	97	133	114	126
OR	29	31	14	12	0
WA	92	66	46	53	48
Total	4654	3010	2923	2803	2661

BLACK EYE					
State	2010	2009	2008	2007	2006
AZ	39	52	0	0	0
CA	294	324	125	269	303
TX	227	395	269	228	230
Total	560	771	394	497	533

PEA BEAN (NAVY)					
State	2010	2009	2008	2007	2005
ID	132	84	79	88	136
MI	1272	976	1162	990	1310
MN	1240	906	1124	999	967
NE	20	0	0	0	78
ND	1928	1263	2087	1636	1330
OR	0	0	0	13	14
SD	76	86	69	86	119
WA	34	0	0	0	18
WY	19	17	21	20	23
Total	4721	3332	4542	3832	3995

Source: USDA, NASS Crop Production Report - 2010

Dry Edible Beans, Production by Commercial Class (1000 cwt)

ALL RED KIDNEY*					
State	2010	2009	2008	2007	2006
CA	32	51	34	27	37
CO	100	202	133	143	98
ID	77	73	62	46	72
MI	185	161	146	117	217
MN	909	870	984	676	725
NE	179	226	297	243	175
ND	32	31	39	22	15
NY	113	70	161	120	119
OR	18	28	27	8	11
WA	0	0	25	0	30
WI	123	127	136	92	108
Total	1,768	1,839	2,044	1,494	1,607

LIGHT RED KIDNEY					
State	2010	2009	2008	2007	2006
CA	21	42	26	22	28
CO	100	160	116	127	63
ID	36	51	33	28	30
MI	153	139	117	99	175
MN	355	277	274	199	183
NE	179	226	297	243	175
NY	98	51	141	95	88
OR	9	21	19	0	0
WA	9	0	0	0	0
Total	951	967	1,023	813	742

DARK RED KIDNEY					
State	2010	2009	2008	2007	2006
CA	11	9	8	5	9
ID	41	42	17	16	35
MI	32	22	29	18	42
MN	554	593	710	477	542
ND	32	31	39	22	15
NY	15	19	20	25	31
OR	9	7	8	8	11
WA	0	0	25	0	30
WI	123	127	136	92	108
Total	817	850	992	663	823

PINTO					
State	2010	2009	2008	2007	2006
AZ	106	140	0	0	0
CO	914	628	496	562	950
ID	936	783	465	620	638
KS	220	210	105	138	210
MI	78	63	32	58	93
MN	309	270	274	367	230
MT	265	224	174	192	234
NE	1,582	1,305	1,075	1,132	1,363
NM	299	275	196	175	197
ND	7,504	6,106	6,660	7,760	4,988
OR	28	19	15	10	20
SD	55	62	40	49	40
UT	0	0	7	5	2
WA	310	260	160	230	143
WY	869	569	558	480	510
Total	13,475	10,914	10,257	11,778	9,618

OTHER					
State	2010	2009	2008	2007	2006
AZ	98	130	0	0	0
CA	99	146	108	97	100
CO	108	60	48	47	127
ID	55	72	42	45	90
KS	5	14	11	0	0
MI	143	81	43	74	70
MN	70	59	73	27	30
NE	37	72	75	52	40
NM	0	0	18	6	0
NY	32	14	11	17	10
ND	10	36	25	29	30
OR	33	40	29	44	74
SD	39	57	15	27	34
TX	14	30	14	15	11
WA	131	141	63	69	29
WY	63	81	66	22	28
Total	937	1,033	641	571	673

TOTAL					
State	2010	2009	2008	2007	2006
AZ	243	322	0	0	0
CA	1,386	1,508	960	1,212	1,209
CO	1,122	848	660	736	1,140
ID	2,479	1,980	1,462	1,602	1,906
KS	225	224	116	138	210
MI	4,212	3,510	3,607	3,120	4,085
MN	3,062	2,520	2,828	2,610	2,228
MT	371	242	191	278	305
NE	3,107	2,461	2,885	2,418	2,728
NM	299	275	214	181	197
NY	292	193	324	248	239
ND	11,399	8,526	10,048	10,773	7,680
OR	149	147	94	149	190
SD	228	232	153	206	224
TX	241	425	283	243	238
UT	0	0	7	5	2
WA	1,360	1,140	885	1,020	968
WI	123	127	136	92	108
WY	997	680	705	555	590
Total	31,295	25,360	25,558	25,586	24,247

Source: USDA, NASS Crop Production Report - 2010

USDA Dry Pea and Lentil Production Data 2006-2010

LENTIL

STATE	Area Planted					Area Harvested					Yield					Production				
	(1,000 Acres)					(1,000 Acres)					(Pounds)					(1,000 Cwt.)				
	2010	2009	2008	2007	2006	2010	2009	2008	2007	2006	2010	2008	2007	2006	2005	2010	2009	2008	2007	2006
Idaho	55	53	38	38	50	54	52	37	37	49	950	1,250	951	1,151	951	513	650	352	426	466
Montana	260	122	83	87	142	245	116	79	85	134	1,500	1,380	770	1,151	1,280	3,675	1,601	608	978	804
North Dakota	265	165	95	110	160	254	164	90	106	148	1,530	1,560	920	1,360	820	3,886	2,558	828	1,442	1,214
Washington	75	75	55	68	77	75	75	55	67	76	900	1,400	1,100	1,200	1,000	675	1,050	605	804	760
United States	655	415	271	303	429	628	407	261	295	407	1,393	1,440	917	1,237	797	8,749	5,859	2,393	3,650	3,244

DRY EDIBLE PEA

STATE	Area Planted					Area Harvested					Yield					Production				
	(1,000 Acres)					(1,000 Acres)					(Pounds)					(1,000 Cwt.)				
	2010	2009	2008	2007	2006	2010	2009	2008	2007	2006	2010	2008	2007	2006	2005	2010	2009	2008	2007	2006
Idaho	31	42	37	25	30	30	41	36	24	29	1,600	1,900	1,500	1,700	1,600	480	779	540	408	464
Montana	220	240	245	235	210	200	226	231	217	183	1,900	1,330	1,080	1,700	1,127	3800	3006	2495	3689	2063
North Dakota	435	490	520	515	610	405	480	500	500	590	2,030	2,400	1,580	2,170	1,580	8222	11520	7900	10850	9322
Oregon	7.0	6.3	5.5	5.5	8.5	6.4	5.9	5.3	4.3	8.1	2,906	2,237	2,547	2,000	2,049	186	132	135	86	166
Washington	70	85	75	67	67	70	85	75	66	66	1,400	2,000	1,600	1,900	1,800	980	1700	1200	1254	1188
United States	763	863	883	848	926	711	838	847	811	876	1,921	2,045	1,448	2,008	1,507	13668	17137	12270	16287	13203

AUSTRIAN WINTER PEA

STATE	Area Planted					Area Harvested					Yield					Production				
	(1,000 Acres)					(1,000 Acres)					(Pounds)					(1,000 Cwt.)				
	2010	2009	2008	2007	2006	2010	2009	2008	2007	2006	2010	2008	2007	2006	2005	2010	2009	2008	2007	2006
Idaho	11.0	8.0	5.0	6.0	9.0	9.0	6.0	4.0	5.0	8.0	1,100	1,600	1,400	1,300	1,300	99	96	56	65	104
Montana	16.0	10.0	10.0	20.0	32.0	6.0	6.0	3.0	4.0	12.0	1,000	933	967	900	917	60	56	29	36	110
Oregon	3.6	2.5	2.5	3.0	5.0	1.6	1.7	1.0	1.0	2.5	1,500	1,765	1,900	1,700	1,800	24	30	19	17	45
United States	30.6	20.5	17.5	29.0	46.0	16.6	13.7	8.0	10.0	22.5	1,102	1,328	1,300	1,180	1,151	183.0	182.0	104.0	118.0	259.0

WRINKLED SEED PEA

STATE	Production (1,000 cwt)				
	2010	2009	2008	2007	2006
Idaho	155	180	160	135	80
Washington	425	694	420	406	510
United States	580	874	580	541	590

* TBA - To Be Announced

Source: Agricultural Statistics Board, NASS, USDA

Dry Pea and Lentil Production Data 2001-2010*

REGULAR GREEN			
Year	Acreage	Avg lbs.	Production lbs.
2010	332,188	1,783	592,445,370
2009	378,118	2,308	872,660,790
2008	308,429	1,475	454,848,250
2007	331,247	1,798	595,666,181
2006	382,406	1,542	589,801,822
2005	391,664	1,676	656,522,845
2004	276,456	2,467	682,052,193
2003	232,007	1,590	368,843,629
2002	179,014	1,608	287,940,114
2001	145,159	1,699	246,629,930
10 Yr Avg	295,669	1,795	534,741,112

YELLOW PEA			
Year	Acreage	Avg lbs.	Production lbs.
2010	382,032	2,161	825,504,900
2009	420,070	2,397	1,006,778,310
2008	528,089	1,285	678,631,812
2007	548,600	1,955	1,072,502,616
2006	581,134	1,434	833,541,060
2005	403,762	1,945	785,322,022
2004	226,383	1,706	386,248,087
2003	72,580	1,790	129,912,434
2002	114,325	1,452	166,010,666
2001	64,033	2,143	137,196,533
10 Yr Avg	334,101	1,827	602,164,844

SMALL LENTILS			
Year	Acreage	Avg lbs.	Production lbs.
2010	114844	1326	152,226,606
2009	103587	1475	152,758,800
2008	72,756	1,094	79,603,188
2007	91168	1229	112,047,206
2006	104,986	950	99,737,766
2005	68,808	958	65,939,078
2004	72,702	1,037	75,364,122
2003	158,983	1,115	177,343,425
2002	146,263	1,155	168,924,643
2001	61,815	1,159	176,943,127
10 Yr Avg	99,591	1,150	126,088,796

LARGE CHICKPEA			
Year	Acreage	Avg lbs.	Production lbs.
2010	100,297	1,372	137,628,763
2009	64,320	1,405	90,390,205
2008	65,327	1,396	91,196,956
2007	115,997	983	114,002,016
2006	112,751	1,048	118,211,146
2005	85,738	982	84,194,649
2004	20,198	1,277	25,787,441
2003	28,546	953	27,209,441
2002	67,664	866	58,583,988
2001	82,142	1,359	111,612,349
10 Yr Avg	74,298	1,164	85,881,695

AUSTRIAN WINTER PEA			
Year	Acreage	Avg lbs.	Production lbs.
2010	18,100	1,313	23,760,000
2009	7,750	1,812	14,041,675
2008	11,504	1,271	14,621,871
2007	25,220	1,253	31,606,527
2006	7,170	1,145	8,210,131
5 Yr Avg	13,949	1,359	18,448,041

MEDIUM LENTILS			
Year	Acreage	Avg lbs.	Production lbs.
2010	368,954	1,517	559,687,258
2009	196,394	1,534	301,242,150
2008	143,047	986	140,979,638
2007	186,635	1,293	241,381,853
2006	295,209	1,174	346,914,397
2005	303,043	1,267	384,090,129
2004	259,598	1,191	309,240,698
2003	76,671	861	65,996,436
2002	54,280	991	53,795,357
2001	69,857	1,295	90,477,725
10 Yr Avg	195,369	1,211	249,380,564

SMALL CHICKPEAS			
Year	Acreage	Avg lbs.	Production lbs.
2010	24,860	1,352	33,600,992
2009	17,313	1,416	24,514,000
2008	8,398	1,730	14,526,035
2007	15065	1110	16726000
2006	31,978	1,125	35,970,119
5 Yr Avg	19,523	1,347	25,067,429

LARGE LENTILS			
Year	Acreage	Avg lbs.	Production lbs.
2010	28,900	1,416	40,921,250
2009	30,799	1,396	43,008,900
2008	32,322	822	26,557,024
2007	35,298	1,319	46,567,997
2006	19,280	1,162	22,406,300
5 Yr Avg	29,320	1,223	35,892,294

RED LENTILS			
Year	Acreage	Avg lbs.	Production lbs.
2010	81,725	1,473	120,384,793
2009	37,660	1,472	55,424,400
2008	25,840	822	23,171,053
3 Yr Avg	48,408	1256	66,326,749

Source: USA Dry Pea and Lentil Council, Figures include US dry pea and lentil figures as reported by member processors and the Farm Service Agency

BEANS, DRY: U.S. EXPORTS BY COUNTRY OF DESTINATION

October 2009-September 2010 (Data in Metric Tons)

(Data in Metric Tons)

COUNTRY	NAVY OR PEA	GREAT NORTHERN	LARGE LIMA	BABY LIMA	LT. RED KIDNEY	DK. RED KIDNEY	OTHER KIDNEY	PINTO BEANS	BLACK BEANS	BEANS NESOI	LEGUME SEED	SMALL REDS	TOTAL BEANS
NORTH AMERICA	24063	48	649	167	4354	2917	10395	62161	115659	14994	19670	1731	256807
Bahamas, The			5				3	3	12	71	2		97
Barbados	4				5			6			1		16
Bermuda					11								11
Canada	19363		515		632	1314	2689			8196	9011	1000	42721
Cayman Isl.							7				5	7	19
Costa Rica					41			77	21	2	123		265
Dominican Republic			23	3	104	482		23350	14	2183	17	3	26177
El Salvador								12862	39		1	51	12953
French W.Indies				159	1520					75			1754
Guatemala					117	973	68	5377	3240	13	1045		10832
Haiti							48		3640	232	100		4020
Honduras									2	2	18		22
Jamaica & Dep.	19		87	6	1264	98	62	50			1262	392	3238
Leeward-Windward	43				11	41	50	10	21	689	50		915
Mexico	4622	48			4		7468	20357	108420	3446	8027	278	152670
Netherlands-Antilles			20		603	7		27	141	67	4		868
Nicaragua	9							40	64				113
Panama	3				42	2		2	45	18	5		117
SOUTH AMERICA				101	93	5	25	2441	34	79	1366		4144
Argentina								18		9	173		200
Bolivia					8								8
Brazil										2	269		271
Chile								68			445		513
Colombia					40	5	19	2355		67	34		2520
Ecuador											33		33
French Guiana				101							102		203
Peru											33		33
Surinam					44		5				41		90
Uruguay											1		1
Venezuela									34	1	236		272
EUROPE	45258	10660	1023	133	326	6918	193	704	821	3993	7887	84	77915
Belgium & Lux.	128	2232				1660		40		144			4204
Croatia										155			155
Cyprus										18	15		33
Denmark										54	113		168
France		6069	52		40	945				11	1262		8378
Germany	43	255			3	232			7		873	37	1450
Greece		490	19			134	20				199		862
Hungary											542		542
Italy	1396	352	190	114		2650	46		261	1695	1826		8528
Netherlands		565			4	472		520	13	634	2627		4834
Norway			29		107	82			27	258			503
Portugal			37		107	125		104					373
Spain	773	698			42	436				84	247		2280
Sweden									61	98	25		183
Switzerland				19	16					280			315
United Kingdom	42918		697		8	182	127	40	452	480	159	47	45108
Yugoslavia										84			84

BEANS, DRY: U.S. EXPORTS BY COUNTRY OF DESTINATION

October 2009-September 2010 (Data in Metric Tons)

(Data in Metric Tons)

COUNTRY	NAVY OR	GREAT	LARGE	BABY	LT. RED	DK. RED	OTHER	PINTO	BLACK	BEANS	LEGUME	SMALL	TOTAL
	PEA	NORTHERN	LIMA	LIMA	KIDNEY	KIDNEY	KIDNEY	BEANS	BEANS	NESOI	SEED	REDS	BEANS
ASIA	310	9615	4466	4081	52	2058	387	1643	360	6336	2919	1687	33912
Bahrain										54	19		73
Cambodia											50		50
China(Mainland)		20											20
Hong Kong		61			27	23	20		73	108	110		423
India										926	203		1128
Israel							12				358		370
Japan	20	2461	4066	4057		1042	354		119	3705	1397	862	18081
Jordan											122		122
Korea	163	688				376		17		974	41		2259
Kuwait		8							14	23	1		45
Lebanon		46								17	68		131
Malaysia		713			13	539			75	61	6		1407
Oman									5		15		20
Pakistan											75		75
Philippines	111	642							45	125			924
Qatar										3	1		4
Saudi Arabia											141		141
Singapore		126		5						116	4		250
Sri Lanka											40		40
Syria											16		16
Taiwan										138	40	824	1002
Thailand	16			20	7					48	57		148
Turkey		4391				79			21		127		4618
United Arab Emirates					4			1626	8	39	30		1707
Yemen		460	400										860
		1993	1155	76	68	152	263	430	486	2448	6102	224	13467
OCEANIA	35	997	577	38	34	76	132	215	243	1224	3056	112	6739
Australia		963	523	38	34	76	38	215	224	705	2607	75	5497
French Pacific Is.										132	23	37	192
New Zealand	35	34	54				93		20	388	416		1040
Other Pacific Is.											10		10
AFRICA	78	262	21			460	2	24968	296	663	794		27543
Angola								7980		605	71		8655
Cameroon						440					210		650
Congo (Brazzaville)									296				296
Congo DR (Zaire)								150					150
Djibouti								6858					6858
Comoros Isl.										59			59
Kenya											40		40
Liberia						20					21		41
Malawi								1048					1048
Mauritius											11		11
Mozambique								3670					3670
Niger		262									200		462
Nigeria			2				2	2					6
So. Africa, Rep of	78		18								207		303
Tanzania								5260			34		5294
Zimbabwe											6		6
Others								1718					1718
Total	69743	24845	6736	4520	4859	12434	11134	93849	117446	28289	37044	3613	414512

Source: Foreign Agricultural Service, Compiled by USDA Market News

Note: Bean, NESOI (Not Elsewhere Specified Or Indicated) includes Beans NESOI, Broad Beans, White, Pink, Cranberry, and Mung Beans

Note: Countries not displayed had no activity or less than .5 MT.

PEAS, DRY: U.S. EXPORTS BY COUNTRY OF DESTINATION
October 2009-September 2010 (Data in Metric Tons)

COUNTRY	LENTILS	YELLOW PEAS	GREEN PEAS	SPLIT PEAS	PEAS NESOI	AUSTRIAN WINTER	BLACK EYE	GARBONZO BEANS	SEED PEAS	TOTAL PEAS
NORTH AMERICA	16678	4774	20199	2989	15058		413	3165	11293	
Bahamas, The					33					33
Barbados	70	46	17	144	39		28	11	35	389
Belize				24			215			239
Bermuda			4							4
Canada	6133	3642	11644	264	12942			2856	5649	2652
Costa Rica			4	8				22	2	36
Dominican Republic			35		2			52		89
French W.Indies	1562									1562
Guatemala	65				79			68	735	947
Haiti	4662	1058	6820							12541
Honduras	7		2					3	4	15
Jamaica & Dep.	12	19	3		4				2	39
Leeward-Windward Islands	122		22	71	72			109		395
Mexico	3998	10	1645	2439	1882			2	4860	14836
Netherlands-Antilles	47			40	6		171	26		291
Nicaragua									5	5
Panama			4					16		20
SOUTH AMERICA	16316	1104	6372	6955	120			987	2003	33857
Argentina									653	653
Brazil	150		39		36				26	251
Chile	415			193					418	1026
Colombia	3874	1081	4529		70			525		10077
Ecuador	200		152						209	561
French Guiana	83									83
Peru	11596	23	1331	6762				455	698	20864
Surinam			65					1		67
Venezuela			256		14			6		276
EUROPE	35701	11	3020	2935	653	30	108	10901	5326	58685
Belgium & Lux.	363		466	176		30				1035
Cyprus					18					18
Denmark			364		201					565
Finland									61	61
France					18				1257	1276
Germany	1190		757					98	298	2343
Greece	1068		22							1090
Hungary	91								1437	1528
Iceland					70					70
Italy	2353		307	1036				1597	191	5484
Netherlands	913	11	370	1245	40			93	608	3280
Norway			155					100	398	653
Portugal	2126									2126
Romania	218									218
Spain	27323		580	478				8690		37071
Sweden	21							94		115
United Kingdom	35				306		108	229	1075	1752
OCEANIA	1295		17	646	48			347	195	2547
Australia				81	48			39	18	186
French Pacific Is.	1240		17							1257
New Zealand	55			2				307	163	528
Other Pacific Is.				562					14	577

PEAS, DRY: U.S. EXPORTS BY COUNTRY OF DESTINATION
October 2009-September 2010 (Data in Metric Tons)

COUNTRY	LENTILS	YELLOW PEAS	GREEN PEAS	SPLIT PEAS	PEAS NESOI	AUSTRIAN WINTER	BLACK EYE	GARBONZO	SEED PEAS	TOTAL PEAS
ASIA	110934	135455	116468	18035	99829	860	1799	12875	8022	
Afghanistan		3921								3921
Bangladesh	330	5225	1082		1338					7974
China(Mainland)		29206	12478		8037			619	5339	55678
Hong Kong	70	82		20	2154			176	117	2618
India	81722	61797	67349	907	62607		1560	7139	1127	284209
Indonesia		5399	316		135					5850
Israel	42		156					212	126	536
Japan	217	58	301		23	133	5	246	406	1387
Jordan			69		42				216	328
Korea			3158		190			73	7	3427
Kuwait							27			27
Lebanon	91		46					1148	14	1298
Malaysia		319	903	97	91		18	196		1623
Nepal		1970	1072	1566	179			180		4967
Pakistan	3954	19905	4926	11830	18854			2047	226	61742
Philippines	275	1990	14749	390	4374			228		22006
Saudi Arabia	1393		2183							3580
Singapore					426		49		93	567
Sri Lanka	13561	1210	335	689	53					15849
Syria									71	71
Taiwan	2631	1324	4659	118	466	728		208	200	10334
Thailand	20	40	96							156
Turkey	4085		1982	1428	257			404	55	8211
United Arab Emirates	2545	2951	448	571	604		140		24	7282
Vietnam		58	160							217
Yemen				420						420
AFRICA	29775	21545	1976	79395	616				1492	134797
Benin	900									900
Burundi		209								209
Cameroon		1620		1335						2955
Chad				600						600
Congo (Brazzaville)				47						47
Djibouti Afars-Issas		78		10122						10200
Ethiopia	7643	2310		34408					1288	45650
Kenya	460	9940		22858	16				155	33428
Liberia				690	600					1290
Mali				827						827
Mauritania	376									376
Mozambique		617		87						704
Niger	1399									1399
Sierra Leone	145									145
So. Africa, Rep of		3582	490	5541					8	9621
Sudan	18644									18644
Tanzania			1196	2880					39	4115
Uganda			290							290
Zambia	178									178
Zimbabwe		2840								2840
Others	30	349							2	380
Total	215768	163247	151009	111753	116399	890	2319	29258	44457	998141

Source: Foreign Agricultural Service, Compiled by USDA Market News Note: Peas NESOI (Not Elsewhere Specified Or Indicated)
Note: Countries not displayed had no activity or less than .5 MT.

U.S. Exports, Dry Beans (cwt)

BEANS	Oct 09-Sep 10	Oct 08-Sep 09	Oct 07-Sep 08	Oct 06-Sep 07	Oct 05-Sep 06	Oct 04-Sep 05
PEA BEAN	1,537,145	1,674,833	1,685,881	1,087,696	1,101,713	1,081,877
GREAT NORTHERN	547,577	449,226	766,110	374,151	509,697	370,647
LIMA	248,082	233,375	318,125	351,340	402,494	251,851
KIDNEY	626,524	663,177	749,453	758,705	901,745	212,818
PINTO	2,068,428	3,023,304	1,961,304	1,959,643	2,763,904	1,314,047
BLACK	2,588,505	2,283,388	1,042,459	1,134,818	797,209	609,781
BEANS NESOI**	623,483	408,719	175,328	314,753	281,054	616,944
SEED	816,459	2,004,906	665,537	599,069	975,072	609,825
SMALL RED	79,639	86,238	74,350	97,880	170,744	149,431
TOTAL	9,135,842	7,438,548	7,438,548	6,678,054	7,903,632	5,217,221

Note: Bean, NESOI (Not Elsewhere Specified Or Indicated) includes Beans NESOI, Broad Beans, White, Pink, Cranberry, and Mung Beans

U.S. Exports, Dry Peas (cwt)

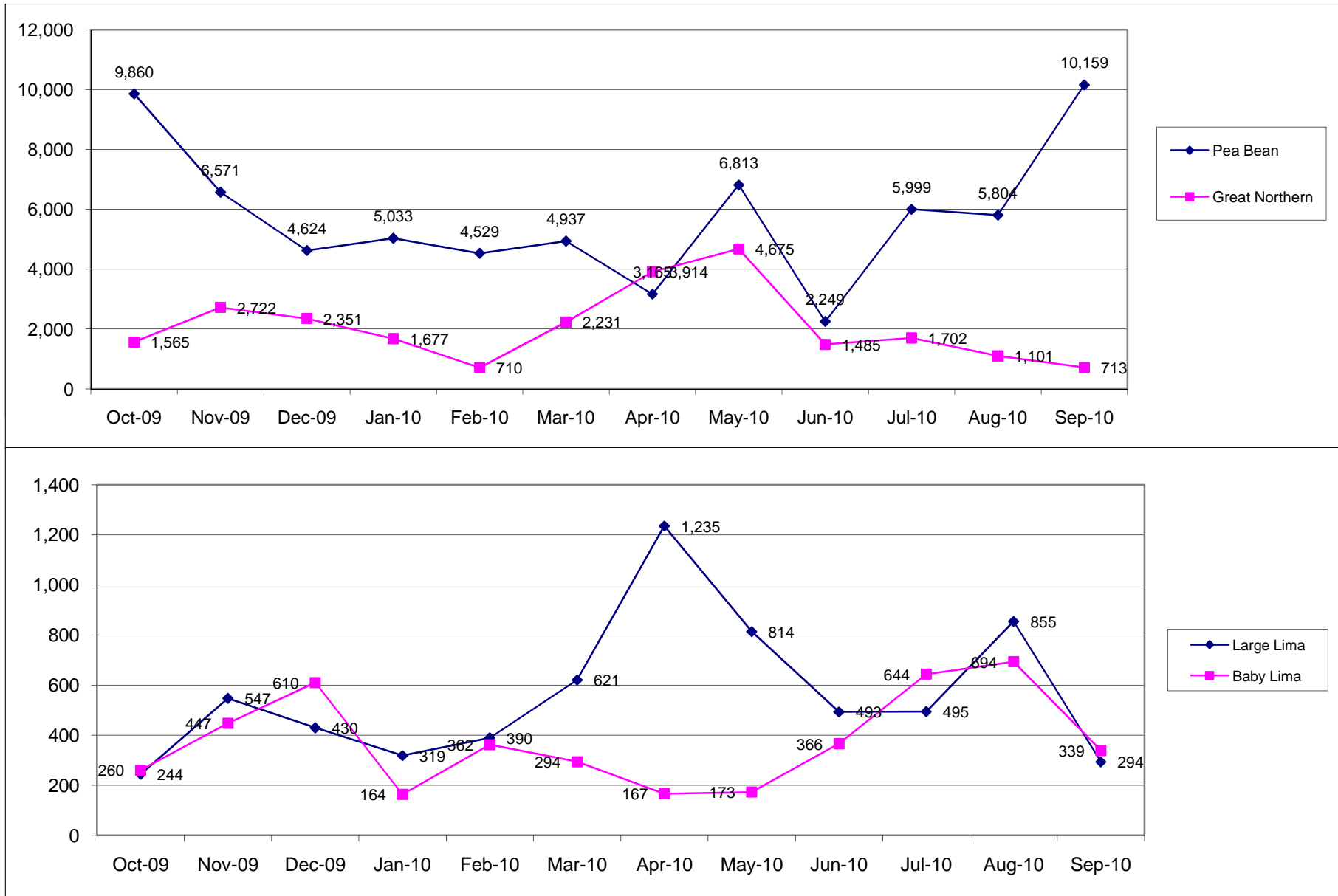
PEAS	Oct 09-Sep 10	Oct 08-Sep 09	Oct 07-Sep 08	Oct 06-Sep 07	Oct 05-Sep 06	Oct 04-Sep 05
LENTIL	4,755,527	2,747,130	2,715,835	2,424,907	3,392,044	2,424,907
YELLOW PEAS	3,597,964	4,281,246	4,541,540	1,690,821	2,922,195	1,690,821
GREEN PEAS	3,328,238	3,354,843	4,025,915	2,914,922	3,361,298	2,914,922
SPLIT PEAS	2,463,036	857,790	625,032	197,368	205,104	197,368
PEAS NESOI**	2,565,434	1,248,449	2,159,545	1,826,345	1,876,750	1,826,345
AUSTRIAN WINTER	19,616	6,744	30,680	11,064	40,510	11,064
BLACKEYE	51,111	20,021	21,092	55,387	31,760	55,387
GARBANZO	644,846	466,825	499,603	198,669	403,663	198,669
SEED	979,832	464,295	763,730	701,732	847,769	701,732
TOTAL	18,405,604	15,382,972	15,382,972	10,021,213	13,081,093	10,021,213

Note: Peas NESOI (Not Elsewhere Specified Or Indicated)

BEANS, DRY: U.S. EXPORTS BY MONTH

October 2009-September 2010

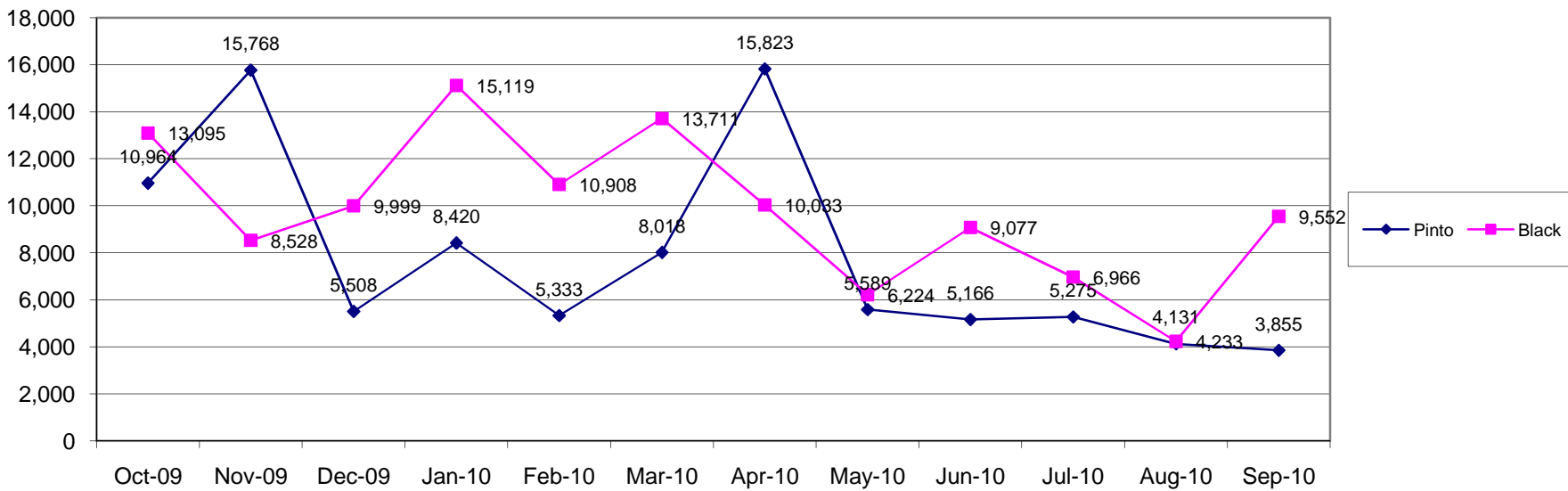
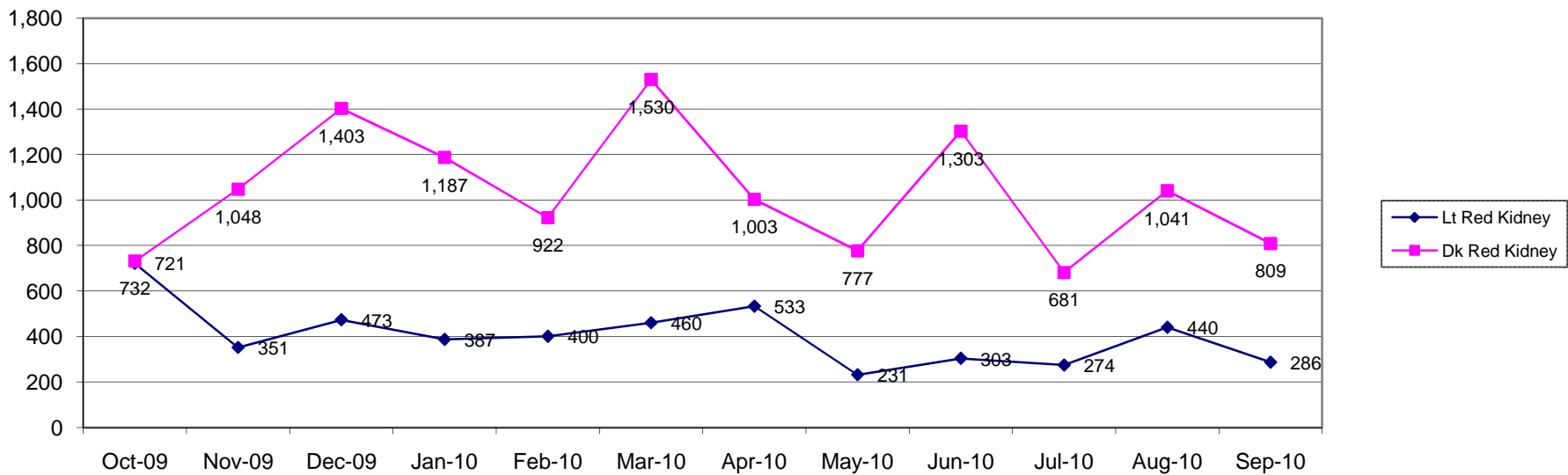
Data in Metric Tons



BEANS, DRY: U.S. EXPORTS BY MONTH

October 2009-September 2010

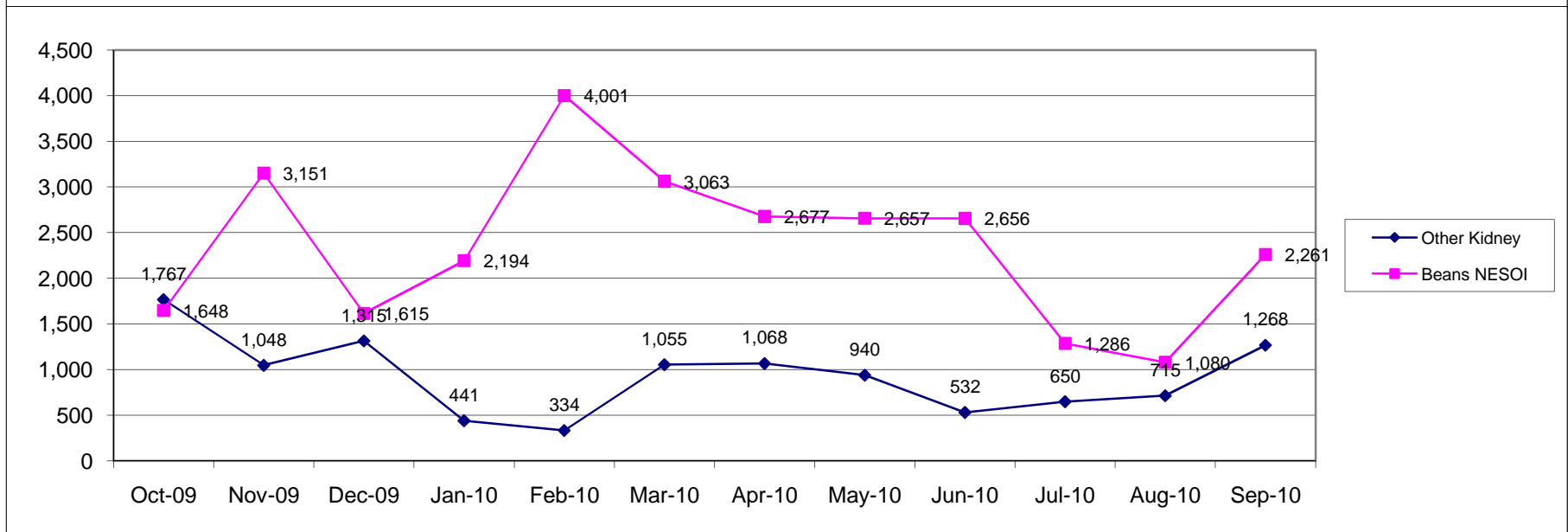
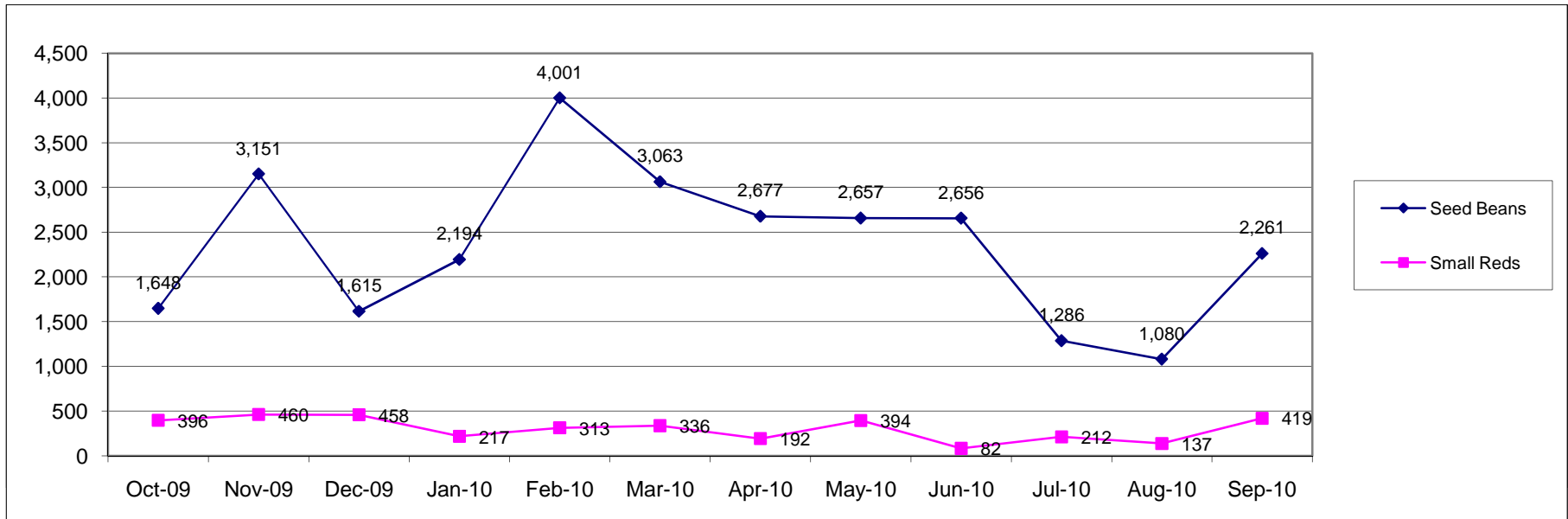
Data in Metric Tons



BEANS, DRY: U.S. EXPORTS BY MONTH

October 2009-September 2010

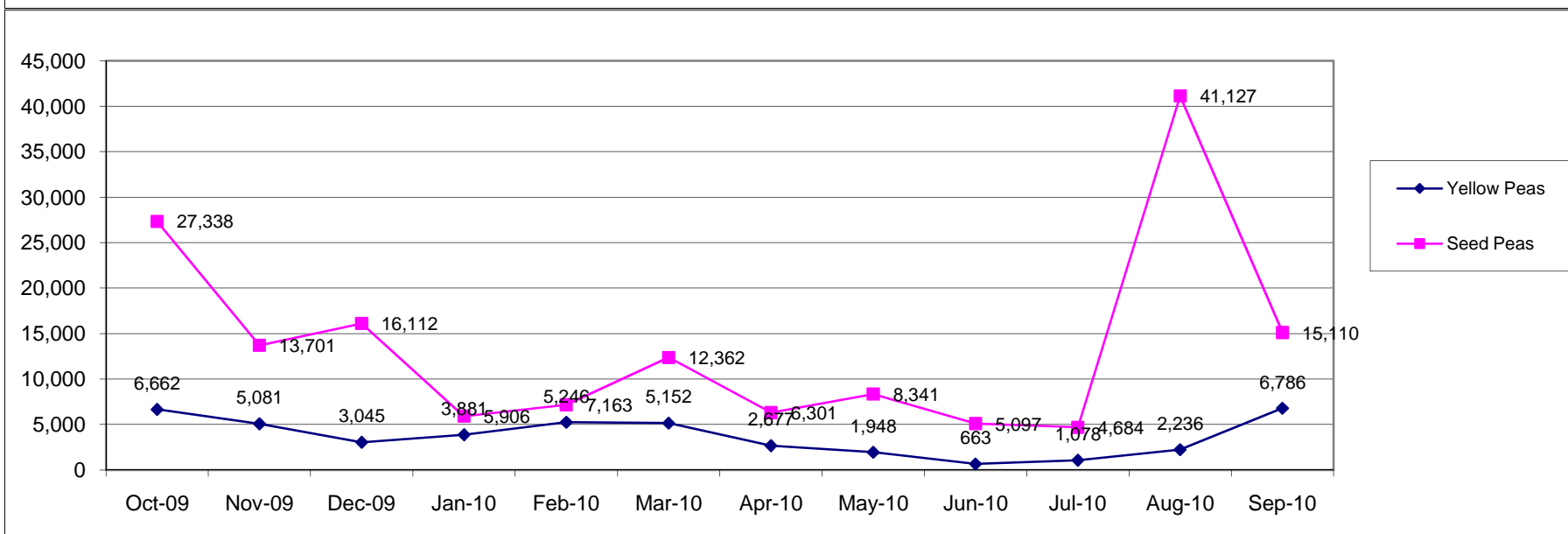
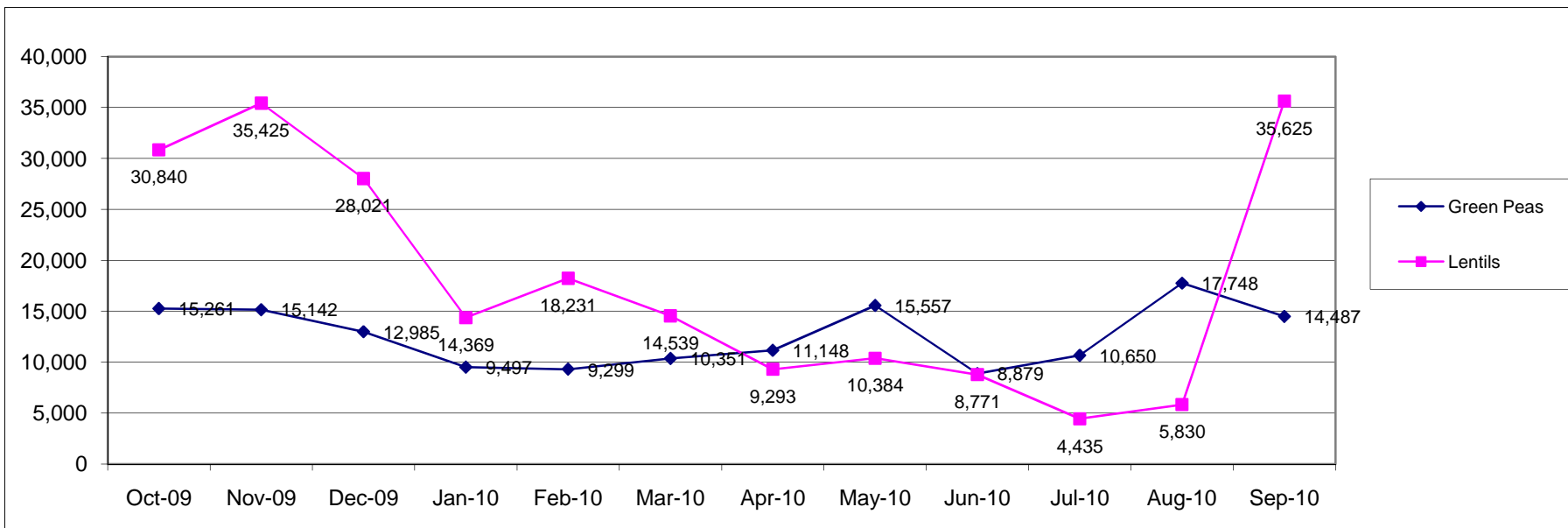
Data in Metric Tons



PEAS, DRY: U.S. EXPORTS BY MONTH

October 2009-September 2010

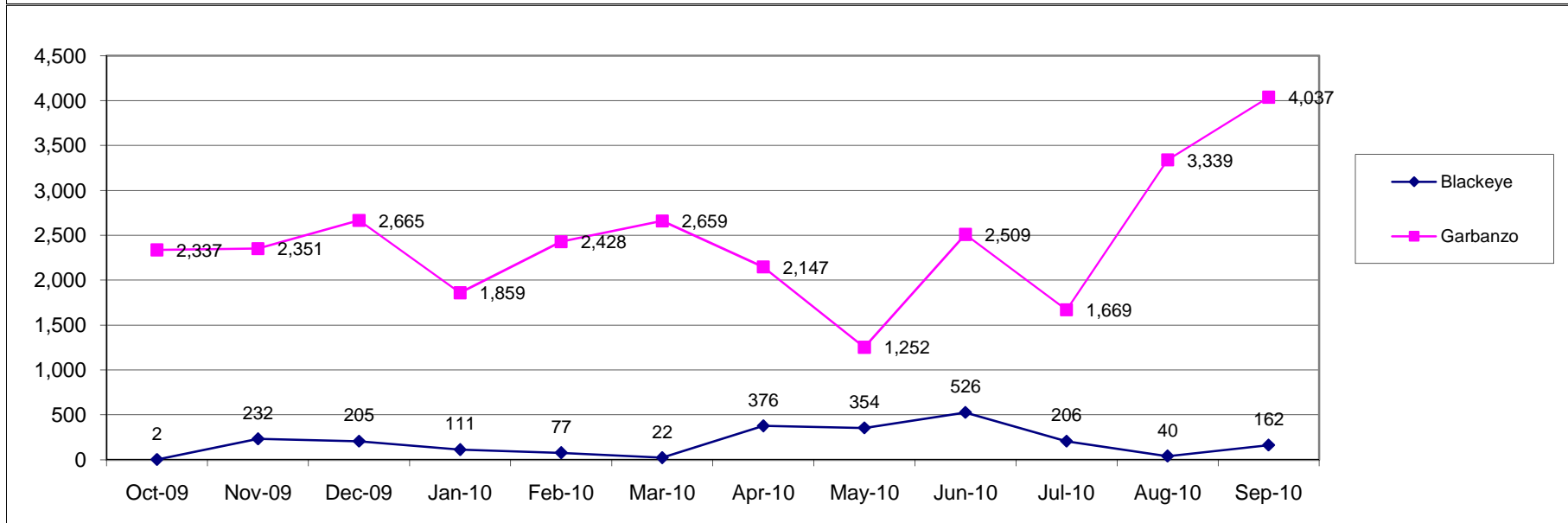
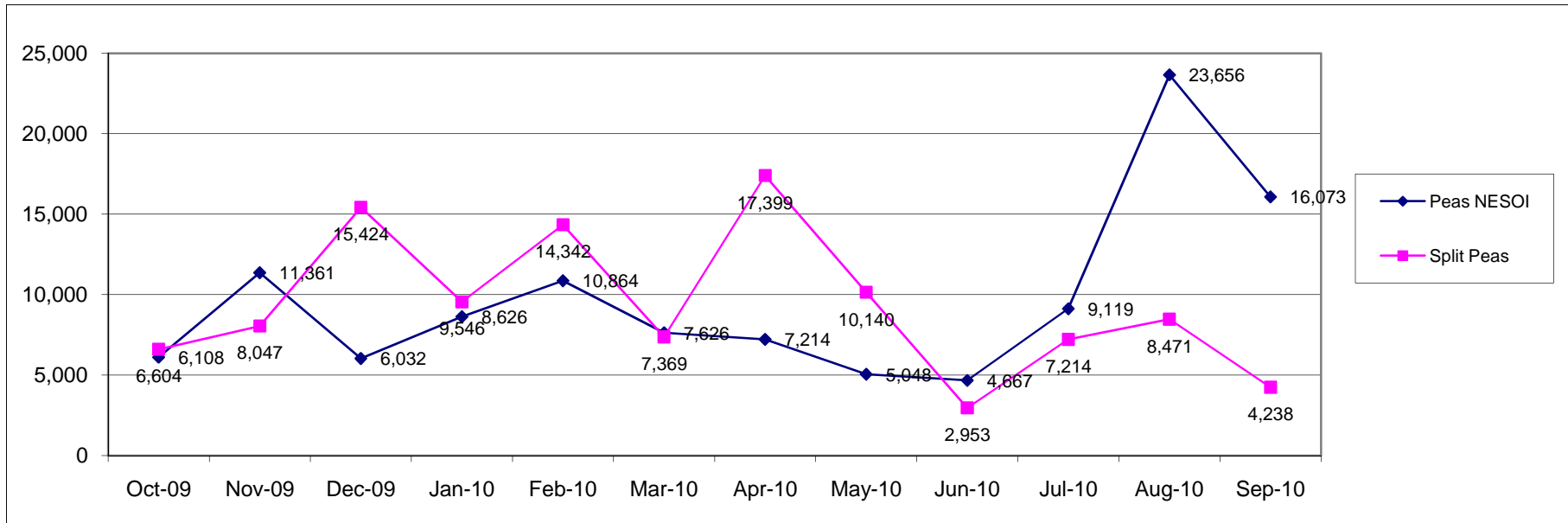
Data in Metric Tons



PEAS, DRY: U.S. EXPORTS BY MONTH

October 2009-September 2010

Data in Metric Tons



USDA Purchases of Canned or Frozen Dry Beans, Peas and Lentils for Use in Various Domestic Feeding Programs (1,000 pounds)

CLASS	FY10	FY09	FY08	FY07	FY06	FY05
BABY LIMA	350	490	210	70	70	0
BLACKEYE	5,565	7,273	4,650	2,664	3,369	4,190
BLACK	352	105	140	70	315	0
GARBANZO	700	805	735	980	280	595
GREAT NORTHERN	70	105	0	70	35	35
CANNED PEAS	13,344	20,614	22,068	13,133	12,150	13,408
FROZEN PEAS	4,000	4,039	3,960	5,504	2,178	3,920
RED KIDNEY	6,596	8,090	5,774	2,260	948	1,202
PINK	630	1,365	2,135	2,694	210	1,960
PINTO	5,846	8,753	6,998	7,803	3,884	4,234
REFRIED BEAN	9,064	8,231	7,328	8,495	6,279	6,505
SMALL RED	1,435	1,890	2,414	2,659	1,120	3,044
VEGETARIAN BEAN	14,784	14,005	13,025	11,314	8,800	9,494
TOTAL	62,736	75,765	69,437	57,716	39,638	48,587

USDA Purchases of Dry Edible Beans, Peas and Lentils for Use in Various Domestic Feeding Programs (1,000 pounds)

CLASS	FY10	FY09	FY08	FY07	FY06	FY05
BABY LIMA	968	1,452	766	847	3,185	1,048
BLACKEYE	1,129	2,016	1,452	403	524	1,411
GREAT NORTHERN	3,548	53,727	4,918	2,258	8,583	4,838
GARBANZO	40	0	0	0	0	0
SPLIT PEAS	0	0	0	0	1,650	0
LENTIL	1,169	0	0	0	0	0
PEA BEAN	0	40	40	0	1,247	0
PINK	0	0	0	0	887	0
PINTO	14,631	18,623	24,309	11,527	19,862	12,738
RED KIDNEY	2,379	1,855	0	887	7,096	2,944
SMALL RED	0	0	0	0	0	0
SMALL WHITE	0	0	0	0	0	0
TOTAL	23,864	77,713	31,485	15,922	43,034	22,979

WORLD PULSE (Not Elsewhere Specified) PRODUCTION (1,000 Metric Tons)*

COUNTRY	2010e	2009	2008	2007	2006
WORLD	2941	3497	3297	3202	3119
AFRICA	971	970	980	895	789
Benin		48	48	10	19
Botswana		26	26	26	25
Burkina Faso		20	26	25	25
Cameroon	1	1	1	1	1
Cape Verde		3	3	4	5
Central African Rep	24	24	24	24	24
Chad		46	45	45	43
Comoros	16	16	16	15	15
Congo DR		10	10	10	9
Cote d'Ivoire		11	11	11	10
Egypt	8	8	8	7	7
Ethiopia		46	45	40	25
Eritrea		25	25	25	30
Gambia		3	3	3	3
Ghana		18	18	18	18
Guinea		63	62	61	60
Guinea-Bissau		2	2	2	2
Kenya		16	16	15	14
Liberia		4	4	4	4
Madagascar		7	7	7	7
Mauritania		17	17	17	16
Morocco		24	18	19	14
Mozambique		151	165	150	104
Namibia		17	17	17	17
Niger		13	13	13	12
Nigeria		53	53	51	50
Sierra Leone		66	66	66	58
Sudan		80	80	80	73
Swaziland		1	1	1	1
Tanzania		100	100	80	56
Tunisia		19	19	19	19
Togo		5	6	3	4
Zambia		24	24	23	23
Zimbabwe			4	4	4
AMERICAS	31	31	31	29	29
Barbados	1	1	1	1	1
Guatemala		23	23	21	21
Mexico				1	
Panama		4	4	4	4
Peru		2	2	2	2
OCEANIA	9	9	8	7	7
Papua New Guinea		3	3	3	3
Solomon Islands		4	4	4	4

COUNTRY	2010e	2009	2008	2007	2006
ASIA	1507	1546	1540	1504	1422
Afghanistan		43	42	42	42
Azerbaijan	1	1	1	1	
Bangladesh		72	83	107	136
Bhutan		2	2	2	2
China	100	130	109	110	128
India		800	800	759	649
Indonesia		1	1	1	1
Iran	33	36	54	44	44
Korea		7	6	7	8
Kyrgyzstan	2	3	1	1	1
Lao, PDR		14	14	14	14
Mongolia	1	1	1	1	1
Nepal	25	25	25	25	24
Pakistan		121	121	121	99
Philippines	32	30	28	28	28
Saudi Arabia		8	8	8	8
Syria		8	8	6	5
Tajikistan	24	24	16	11	119
Thailand		80	80	80	80
Turkey	10	21	22	20	20
Uzbekistan	15	11	10	8	5
Vietnam		97	97	97	97
Yemen		11	11	10	10
EUROPE	423	942	737	768	872
Albania	1	1	1	1	1
Austria	4	3	4	5	4
Czech Rep	8	6	9	16	9
Denmark		4	5	6	10
France	10	9	10	9	8
Germany	12	11	8	8	9
Greece	3	3	3	3	4
Lithuania	18	20	18	10	23
Poland	150	150	150	150	126
Russian Federation	46	99	51	32	33
Slovakia	2	3	2	4	3
Spain	17	13	15	16	22
Ukraine	16	9	8	6	13
United Kingdom	132	612	455	500	610

*Latest information available e=FAO Estimate

Source: FAO United Nations, ProdSTAT Database, 2010

WORLD DRY BEAN PRODUCTION (1,000 Metric Tons)*

COUNTRY	2009	2008	2007	2006	2005
WORLD	19723	20405	20829	20833	18911
AFRICA	3808	3585	3651	3563	3330
Angola	247	124	104	100	108
Benin		144	131	80	105
Burundi		205	205	209	250
Cameroon	250	250	250	250	234
Chad		63	65	78	78
Congo, DR		113	112	111	110
Egypt	100	96	61	54	50
Ethiopia	330	241	223	138	160
Kenya		265	430	532	382
Madagascar		88	88	88	78
Malawi		125	129	117	86
Morocco		13	13	12	12
Rwanda	300	308	329	283	200
Somalia		18	18	18	19
South Africa	67	59	40	67	70
Sudan	12	17	16	16	15
Tanzania		850	850	850	750
Togo		71	63	53	67
Uganda	452	440	435	424	478
Zimbabwe		30	30	30	21
AMERICAS	7341	7398	6971	7682	6608
Argentina	313	337	328	323	169
Belize	5	4	5	4	5
Bolivia	54	36	39	36	34
Brazil	3523	3461	3169	3458	3022
Canada	220	266	277	372	318
Chile	28	20	19	50	45
Colombia	154	161	156	137	144
Costa Rica	10	7	8	11	10
Cuba	111	97	97	71	106
Dominican Rep		21	29	29	23
Ecuador	11	15	12	18	23
El Salvador	80	95	71	91	65
Guatemala		100	100	140	83
Haiti		65	70	40	40
Honduras	71	67	68	61	86
Mexico	1051	1123	994	1386	827
Nicaragua		177	170	180	212
Panama		4	4	5	4
Paraguay	43	45	70	70	67
Peru	98	86	82	83	72
USA	1150	1159	1161	1010	1205
Uruguay		4	3	3	4
Venezuela		48	37	19	43

COUNTRY	2009	2008	2007	2006	2005
ASIA	8089	8994	9806	9143	8446
Armenia	6	6	5	4	4
Azerbaijan	11	11	10	9	10
Bangladesh		37	41	37	34
Cambodia		39	54	60	45
China	1543	1709	1533	1560	1807
Georgia	10	12	11	8	23
India	2310	3010	3930	3270	2631
Indonesia	330	325	320	327	321
Iran	181	183	223	208	216
Iraq		7	7	7	8
Japan	69	94	88	83	105
Kazakhstan	1	1	1	1	1
Korea DPR		300	300	300	300
Korea Rep		8	8	6	7
Kyrgyzstan	68	67	71	56	44
Myanmar		2500	2500	2502	2175
Nepal		29	29	29	30
Pakistan	130	171	195	154	130
Philippines	28	30	29	26	27
Sri Lanka	9	9	9	8	9
Thailand		113	113	112	133
Turkey	181	155	154	196	210
Viet Nam		158	158	158	158
EUROPE	435	397	367	408	474
Albania	23	22	21	24	24
Belarus	174	133	86	83	111
Bosnia Herzegovina	15	13	10	14	13
Bulgaria	2	2	7	5	10
Croatia	2	3	3	4	6
France	6	6	7	8	9
Greece	13	13	18	20	19
Hungary	1	2	1	2	2
Ireland		9	9	9	14
Italy	13	12	12	13	19
Lithuania	5	4	3	3	6
Macedonia		7	7	7	6
Moldova	11	16	5	27	27
Netherlands	2	2	3	2	4
Poland	29	30	39	28	29
Portugal	3	3	4	4	3
Romania	22	25	18	35	42
Russian Fed	7	6	10	11	11
Serbia		42	60	60	59
Spain	13	10	11	14	15
Sweden	1	1	1	1	1
Ukraine	31	32	31	32	40
OCEANIA	51	30	29	36	53
Australia	51	30	29	36	53

*Latest information available e=FAO Estimate

Source: FAO United Nations, ProdSTAT Database, 2010

WORLD GARBANZO (CHICK-PEA) PRODUCTION (1,000 Metric Tons)*

COUNTRY	2009	2008	2007	2006	2005
WORLD	978	8053	9677	8458	8445
AFRICA	475	451	415	398	371
Algeria	18	11	14	13	14
Egypt	6	8	10	13	13
Eritrea		4	4	5	4
Ethiopia	312	287	254	211	217
Malawi		40	40	35	37
Morocco		38	33	66	32
Sudan	12	17	12	12	12
Tanzania		31	31	31	32
Tunisia		11	13	9	7
Uganda		3	3	3	3
AMERICAS	316	293	453	410	293
Argentina	5	5	5	5	2
Canada	76	67	225	163	104
Chile	2	3	3	3	3
Mexico		165	148	163	134
Peru	3	3	3	5	1
USA	65	51	69	70	48
EUROPE	61	63	63	55	52
Bosnia Herzegovina		4	4	4	4
Bulgaria	3	2	0	0	0
Greece	3	3	3	3	3
Italy	8	6	6	6	6
Macedonia	1	1	1	1	1
Moldova	2	4	1	4	2
Portugal		1	1	1	1
Russian Federation	18	18	18	15	15
Slovakia	1	1	1	1	1
Spain	21	22	30	20	19

COUNTRY	2009	2008	2007	2006	2005
ASIA	8477	7254	8434	7362	7606
Bangladesh		7	10	10	10
China	8	8	7	7	9
India	6540	5749	6334	5575	5469
Iran	209	113	329	325	265
Iraq	1	2	5	15	13
Israel		12	12	12	12
Jordan	1	1	1	2	4
Kazakhstan	15	10	4	3	3
Lebanon		1	1	1	1
Myanmar		260	260	260	235
Nepal	7	7	8	8	10
Palestine/Gaza		2	2	2	2
Pakistan	741	475	838	480	868
Syria	57	27	50	52	65
Turkey	563	518	505	552	600
Uzbekistan	4	3	4	3	1
Yemen	51	58	63	54	37
OCEANIA	445	443	313	232	123
Australia	445	443	313	232	123

*Latest information available e=FAO Estimate

Source: FAO United Nations, ProdSTAT Database, 2010

WORLD DRY PEA PRODUCTION (1,000 Metric Tons)*

COUNTRY	2009e	2008	2007	2006	2005
WORLD	10380	10035	9284	9795	11281
AFRICA	443	403	381	375	381
Algeria	6	4	6	5	5
Burundi		33	33	33	34
Congo		6	5	6	6
Congo, DR		1	1	1	1
Eritrea		1	1	1	
Ethiopia	267	232	210	182	197
Lesotho	1	1	1	2	2
Libyan	5	5	5	5	5
Madagascar		18	18	18	17
Malawi		5	5	15	13
Mauritania		10	10	10	10
Morocco		16	12	24	14
Niger		1	1	1	1
Rwanda		14	14	14	19
Sierra Leone		2	2	2	2
South Africa		1	1	1	1
Tanzania		29	29	29	30
Tunisia	10	10	10	9	10
Uganda	17	16	16	16	15
AMERICAS	4331	4296	3839	3284	3770
Argentina	50	50	50	55	36
Belize	3	3	2	2	2
Bolivia		5	5	5	5
Brazil	5	5	4	4	6
Canada	3379	3571	2935	2520	2994
Chile	3	2	2	2	1
Columbia	45	45	46	38	39
Ecuador	1	1	1	2	2
Guyana		1	1	1	1
Jamaica		1	1	1	1
Mexico		2	4	4	2
Paraguay	4	4	4	4	5
Peru	50	47	43	45	39
USA	777	557	739	599	635
Uruguay		3	3	3	3
ASIA	2011	2095	2095	1909	2121
Azerbaijan	9	11	8	8	8
Bangladesh		9	10	12	14
Bhutan		2	2	3	3
China	1000	1100	1080	1013	1155
India		800	800	710	786
Japan	1	1	1	1	1
Kazakhstan	51	35	49	33	38

COUNTRY	2009e	2008	2007	2006	2005
Kyrgyzstan	1	1	2	1	1
Lebanon		2	2	2	2
Myanmar		40	40	38	36
Pakistan		64	71	52	47
Syria	7	6	6	10	5
Tajikistan	4	4	5	4	9
Turkey	4	4	4	4	4
Turkmenistan		11	11	14	9
Uzbekistan	2	2	1	1	1
Yemen	3	3	3	2	2
EUROPE	3218	2983	2679	4055	4385
Austria	35	45	57	90	90
Belarus	49	39	30	47	51
Belgium		4	3	3	5
Bosnia	3	4	5	6	5
Bulgaria	2	4	3	1	2
Croatia	1	1	1	1	1
Czech Rep	52	41	55	72	79
Denmark	18	11	14	26	43
Estonia	7	3	9	5	6
Finland	11	7	11	9	8
France		447	594	1016	1331
Germany	166	141	177	288	346
Greece	1	1	1	1	1
Hungary	33	46	51	49	50
Ireland		4	4	4	5
Italy	28	28	41	43	34
Latvia	3	1	1	1	3
Lithuania	50	29	24	16	21
Luxembourg	1	1	1	1	1
Macdonia	3	2	2	2	1
Moldova Rep	13	18	9	34	34
Netherlands	6	4	3	5	10
Poland	25	23	32	29	34
Romania	30	36	17	36	39
Russian Fed	1349	1257	863	1151	1127
Serbia					33
Slovakia	12	14	19	23	28
Slovenia	1	4	5	10	5
Spain	144	144	160	190	133
Sweden	50	29	38	51	65
Switzerland	15	17	18	18	18
Ukraine	494	455	268	653	616
UK	132	91	130	145	161
OCEANIA	377	258	290	172	623
Australia	356	238	268	140	585
New Zealand	21	20	22	32	38

*Latest information available e=FAO Estimate

Source: FAO United Nations, ProdSTAT Database, 2010

WORLD LENTIL PRODUCTION (1,000 Metric Tons)*

COUNTRY	2009e	2008	2007	2006	2005
WORLD	3595	2827	3298	3338	4044
AFRICA	109	111	97	99	85
Algeria	3	1	1	1	
Egypt	1	1	2	1	2
Ethiopia	90	94	81	58	63
Kenya		1	1	1	1
Madagascar		1	1	1	1
Malawi		2	2	2	2
Morocco		9	9	34	15
Tunisia	1	1	1	1	
AMERICAS	1795	1170	919	857	1421
Argentina	2	2	2	2	3
Canada	1610	1043	734	693	1164
Chile	1	1	1	1	1
Columbia	1	1	1	1	1
Ecuador		2	2	2	2
Martinique		1	1	1	1
Mexico		8	9	7	8
Peru	4	3	3	3	3
USA	266	109	166	147	238
ASIA	1507	1446	2115	2299	2290
Azerbaijan	1	2	1	2	2
Bangladesh		72	117	115	121
China	130	150	134	126	135
India		810	910	946	994
Iran	84	56	105	101	113
Iraq	2	2	3	17	4
Lebanon		1	1	1	1
Myanmar		1	1	1	1
Nepal	148	161	165	158	161
Pakistan	14	15	21	18	26
Syria	102	34	109	181	154
Turkey		131	535	623	570
Uzbekistan	1	1	1	1	
Yemen	8	9	9	8	6
EUROPE	38	32	33	45	35
Bulgaria	2	1	2	2	2
France	12	8	10	1	2
Greece	3	3	3	2	2
Italy	1	1	1	1	1
Russian Fed	7	6	3	11	6
Spain	13	13	14	12	7
OCEANIA	146	68	134	39	213
Australia	143	64	131	36	210
New Zealand		3	3	3	3

*Latest information available e=FAO Estimate

Source: FAO United Nations, ProdSTAT Database, 2010

WORLD LUPINE PRODUCTION (1,000 Metric Tons)*

COUNTRY	2009e	2008	2007	2006	2005
World	934	1011	980	808	1680
Africa	30	30	30	31	31
Egypt	3	2	3	3	3
Morocco		14	14	14	14
South Africa		13	13	14	14
Americas	42	42	62	80	74
Chile		32	51	70	63
Ecuador		2	2	1	1
Peru		8	8	8	9
Asia	1	1	1	1	1
Lebanon	1	1	1	1	1
Europe	247	231	226	226	289
Austria	1	1	1	1	1
Belarus	74	81	47	54	79
France	8	7	11	17	18
Germany		50	65	85	95
Greece	1	1			
Hungary	1			1	
Italy	5	5	5	6	4
Lithuania	11	7	8	5	5
Poland	57	40	56	28	41
Russian Federation	9	22	17	14	32
Slovakia				2	
Spain	5	4	6	7	6
Ukraine	27	14	8	7	9
Oceania	614	708	662	470	1285
Australia	614	708	662	470	1285

EUROPEAN CROP PRODUCTION

Broad and Field Beans

(Data in 1,000 Tons, Calendar Year)

COUNTRY	Area in Production 1,000 ha				Harvested Production 1,000 t				Yield 100kg/ha			
	2010	2009	2008	2007	2010	2009	2008	2007	2010	2009	2008	2007
Albania	0.0	0.0	15.0	14.6	0.0	0.0	25.0	20.8	0.0	0.0	16.6	14.2
Austria	4.2	2.8	3.7	4.5	10.1	6.7	8.1	10.5	24.0	23.9	22.0	23.5
Belgium	0.9	0.5	0.4	0.4	4.1	3.1	1.8	2.2	45.6	83.4	46.0	50.8
Bosnia-Herzegovina	0.0	9.5	9.4	9.3	0.0	14.9	12.9	10.4	0.0	15.7	13.8	11.2
Bulgaria	2.4	1.7	2.1	5.4	0.0	0.0	2.5	7.7	0.0	0.0	11.9	14.2
Croatia	0.0	1.9	2.1	4.5	0.0	2.5	3.3	2.5	0.0	12.6	15.2	5.6
Cyprus	0.6	0.5	0.8	0.8	0.9	0.8	0.7	0.7	14.9	15.2	9.6	9.5
Czech Republic	2.0	1.9	0.9	1.4	2.0	2.6	1.3	1.7	10.0	13.7	14.5	12.6
Denmark	1.1	0.0	0.0	0.0	0.0	0.0	0.0	0.0	0.0	0.0	0.0	0.0
Estonia	0.1	0.1	0.1	0.1	0.1	0.1	0.1	0.1	12.7	15.7	10.0	10.0
Finland	9.4	2.3	0.7	0.7	0.0	0.0	0.0	0.0	0.0	0.0	0.0	0.0
France	146.9	90.5	63.0	56.8	679.3	443.6	320.6	254.8	46.2	49.0	50.9	44.8
Germany	16.9	12.0	11.1	12.2	56.2	47.5	38.4	43.1	33.3	39.6	34.6	35.3
Greece	0.0	0.8	0.8	9.0	0.0	12.8	12.8	17.6	0.0	16.0	16.0	19.7
Hungary	0.6	0.6	0.9	1.0	0.0	1.1	2.1	1.6	0.0	17.1	23.4	16.2
Italy	0.0	56.1	60.3	56.9	106.9	106.9	118.1	104.4	0.0	17.4	19.6	18.3
Latvia	0.0	1.2	0.8	0.5	0.0	2.4	1.7	0.6	0.0	20.0	21.3	12.0
Lithuania	3.0	2.1	2.6	1.8	4.5	5.1	4.3	2.7	15.0	24.3	16.5	15.0
Luxembourg	0.1	0.1	0.1	0.0	0.3	0.3	0.1	0.1	35.2	35.2	28.2	22.0
Netherlands	0.6	2.0	1.5	1.4	0.0	6.3	3.9	5.0	0.0	32.0	26.0	36.6
Poland	0.0	20.6	20.9	28.0	0.0	44.0	43.1	57.5	0.0	21.3	20.6	20.5
Portugal	6.5	6.5	6.3	7.6	3.3	3.3	3.2	4.0	5.1	5.1	5.1	5.3
Romania	14.1	30.0	36.2	41.9	14.1	22.3	25.2	18.0	10.0	7.5	7.0	4.3
Slovakia	0.3	0.2	0.2	1.8	0.0	0.2	0.2	1.5	0.0	9.6	10.6	8.3
Slovenia	0.0	0.0	0.0	0.0	0.0	0.7	0.4	0.6	0.0	0.0	0.0	0.0
Spain	0.0	26.2	28.4	35.9	0.0	35.4	38.5	48.3	0.0	13.5	13.6	13.5
Sweden	13.7	8.5	6.8	5.9	0.0	0.0	0.0	0.0	0.0	0.0	0.0	0.0
Switzerland	0.0	0.0	0.2	0.3	0.0	0.0	0.7	0.7	0.0	0.0	29.1	24.2
Turkey	0.0	0.0	0.0	0.0	0.0	165.0	155.0	177.0	0.0	0.0	0.0	0.0
United Kingdom	0.0	186.0	118.3	123.8	0.0	688.2	0.0	0.0	0.0	37.0	0.0	0.0
Yugoslavia	0.0	14.0	13.6	13.7	0.0	0.0	12.8	10.9	0.0	0.0	9.4	8.0
Total	223.4	478.6	407.2	440.9	881.8	1615.8	836.8	805.0	252.0	524.8	491.5	455.6

Source: Eurostat Database (See Copyright Information)

Note: 2010 entries are provisional values

EUROPEAN CROP PRODUCTION

Peas

(Data in 1,000 Tons, Calendar Year)

COUNTRY	Area in Production 1,000 ha				Harvested Production 1,000 t				Yield 100kg/ha			
	2010	2009	2008	2007	2010	2009	2008	2007	2010	2009	2008	2007
Austria	13.6	15.2	22.3	28.1	32.8	34.7	45.4	56.7	24.2	22.9	20.3	20.2
Belgium	1.1	1.0	0.8	1.0	4.6	5.4	3.5	3.1	41.8	53.0	44.1	30.6
Bosnia-Herzegovina	0.0	1.4	1.6	1.7	0.0	3.2	4.0	4.8	0.0	22.5	24.5	28.5
Bulgaria	3.9	3.1	3.7	4.6	0.0	9.7	6.5	7.8	0.0	30.9	17.6	16.9
Croatia	0.0	1.0	0.7	0.4	0.0	2.4	2.0	0.7	0.0	23.6	28.0	17.9
Cyprus	0.1	0.1	0.0	0.0	0.1	0.1	0.1	0.1	16.5	18.3	51.7	51.7
Czech Republic	24.4	21.1	17.4	22.9	54.0	51.9	40.9	55.0	22.2	24.5	23.5	24.0
Denmark	8.5	6.8	4.4	5.8	0.0	22.4	14.0	19.4	0.0	32.9	31.8	33.6
Estonia	6.1	4.8	4.7	5.6	11.4	7.5	3.2	9.4	18.7	15.5	6.8	16.8
Finland	6.1	4.2	3.3	4.4	12.0	11.2	7.2	10.7	19.7	26.5	21.8	24.3
France	236.1	113.7	100.2	164.0	1075.1	543.0	446.9	595.3	45.5	47.8	44.6	36.3
Germany	58.7	48.3	48.0	67.7	176.7	165.9	140.6	177.5	30.1	34.3	29.3	26.2
Greece	0.0	3.8	4.4	4.3	0.0	5.5	6.1	6.7	0.0	14.3	13.9	15.7
Hungary	17.8	19.1	20.7	22.4	40.2	32.5	46.0	51.2	22.5	17.1	22.2	22.9
Italy	0.0	10.8	10.4	13.0	0.0	28.7	26.8	41.8	0.0	26.7	25.8	32.2
Latvia	0.0	1.3	0.7	0.9	0.0	2.6	1.1	1.8	0.0	20.0	15.7	20.0
Lithuania	28.8	25.2	15.3	15.6	49.0	50.3	29.1	24.2	17.0	20.0	19.0	15.5
Luxembourg	0.2	0.2	0.2	0.3	0.9	0.9	1.0	0.7	41.9	41.9	59.9	23.0
Netherlands	9.0	1.2	0.9	0.9	4.5	5.6	4.2	3.4	48.0	46.0	45.6	38.9
Poland	0.0	14.5	13.8	18.0	0.0	37.2	29.0	41.5	0.0	22.6	21.0	23.1
Romania	27.2	22.7	18.0	23.4	46.1	30.0	36.9	17.7	16.9	13.2	20.6	7.6
Slovakia	9.8	7.5	7.1	9.3	15.0	11.7	13.6	19.3	15.3	15.6	19.2	20.7
Slovenia	0.0	0.0	0.0	0.0	1.4	1.4	3.8	5.4	0.0	0.0	0.0	0.0
Spain	0.0	185.1	122.6	178.6	0.0	168.7	158.1	194.0	0.0	9.1	12.9	10.9
Sweden	22.5	16.3	10.7	13.3	54.3	48.9	29.1	38.0	24.0	30.0	27.2	28.5
Switzerland	0.0	0.0	4.3	5.2	0.0	0.0	16.2	18.2	0.0	0.0	37.8	34.6
Turkey	0.0	0.0	1.0	0.0	0.0	4.0	4.0	3.0	0.0	0.0	40.0	0.0
United Kingdom	0.0	42.0	30.1	37.2	0.0	151.2	91.0	0.0	0.0	36.0	30.3	0.0
Yugoslavia	0.0	1.1	1.0	0.9	0.0	0.0	2.4	1.9	0.0	0.0	25.4	20.8
Total	473.9	571.5	468.3	649.5	1578.1	1436.6	1212.7	1409.3	404.3	665.2	780.5	641.4

Source: Eurostat Database (See Copyright Information)

Note: 2010 entries are provisional values

EUROPEAN CROP PRODUCTION - Kidney Beans

(Data in 1,000 Tons, Calendar Year)

COUNTRY	Area in Production 1,000 ha				Harvested Production 1,000 t				Yield 100kg/ha			
	2010	2009	2008	2007	2010	2009	2008	2007	2010	2009	2008	2007
	Albania	0.0	0.0	15.0	14.6	0.0	0.0	25.0	20.8	0.0	0.0	16.6
Belgium	0.3	0.1	0.1	0.1	1.1	0.7	0.3	0.3	36.7	49.3	33.0	28.0
Bulgaria	0.0	0.0	2.1	5.3	0.0	0.0	2.4	7.4	0.0	0.0	11.4	13.9
Croatia	0.0	1.9	2.1	4.5	0.0	2.5	3.3	2.5	0.0	12.6	15.2	5.6
Cyprus	0.3	0.3	0.2	0.2	0.2	0.2	0.1	0.1	9.1	7.4	5.6	5.6
France	0.0	2.5	2.3	3.1	0.0	6.3	5.9	8.5	0.0	25.5	25.6	27.6
Greece	0.0	6.5	6.5	7.5	0.0	10.3	10.3	15.0	0.0	15.9	15.9	20.0
Hungary	0.0	0.5	0.7	0.6	0.0	0.9	1.6	0.9	0.0	17.4	24.9	14.5
Italy	0.0	6.4	6.0	0.0	0.0	12.8	11.6	0.0	0.0	20.0	19.4	0.0
Latvia	0.0	1.1	0.8	0.5	0.0	2.4	1.7	0.0	0.0	21.8	21.3	0.0
Netherlands	0.0	0.0	0.9	1.1	0.0	0.0	2.2	3.5	0.0	0.0	24.1	32.0
Poland	17.1	14.3	15.1	20.1	0.0	28.5	29.8	38.8	0.0	20.0	19.8	19.4
Portugal	0.0	6.5	6.3	7.6	0.0	3.3	3.2	4.0	0.0	5.1	5.1	5.3
Romania	0.0	0.0	0.0	42.1	0.0	0.0	0.0	18.1	0.0	0.0	0.0	4.3
Slovakia	0.0	0.0	0.0	1.2	0.0	0.0	0.0	1.0	0.0	0.0	0.0	8.9
Slovenia	0.0	0.0	0.0	0.4	0.0	0.0	0.4	0.6	0.0	0.0	14.4	16.1
Spain	0.0	7.8	7.2	8.8	0.0	12.9	11.0	11.6	0.0	16.5	15.4	13.2
Sweden	0.7	0.5	0.5	0.5	0.0	0.0	0.0	0.0	0.0	0.0	0.0	0.0
Turkey	0.0	0.0	0.3	0.3	0.0	0.0	3.0	2.0	0.0	0.0	10.0	6.7
Total	18.9	48.9	66.6	119.0	1.3	80.8	111.8	135.1	45.8	211.5	277.7	235.3

EUROPEAN CROP PRODUCTION - Sweep Lupines

(Data in 1,000 Tons, Calendar Year)

COUNTRY	Area in Production 1,000 ha				Harvested Production 1,000 t				Yield 100kg/ha			
	2010	2009	2008	2007	2010	2009	2008	2007	2010	2009	2008	2007
	Austria	0.0	0.2	0.2	0.4	0.0	0.6	0.5	1.3	0.0	30.0	30.1
Bulgaria	0.0	0.0	0.0	0.0	0.0	0.0	0.0	0.0	0.0	0.0	0.0	24.0
Czech Republic	0.0	0.0	0.0	0.0	10.2	2.2	0.0	0.0	0.0	0.0	0.0	0.0
France	0.0	3.2	2.7	4.8	0.0	8.2	6.8	11.3	0.0	25.9	25.3	23.4
Germany	0.0	19.4	19.9	25.2	0.0	0.0	0.0	0.0	0.0	0.0	0.0	0.0
Greece	0.0	0.3	0.3	0.3	0.0	0.7	0.7	0.2	0.0	20.3	20.3	6.2
Hungary	0.0	0.4	0.3	0.4	0.0	0.6	0.4	0.4	0.0	14.4	14.0	11.4
Lithuania	0.0	10.4	7.5	10.3	0.0	10.6	7.3	7.9	0.0	10.2	9.7	7.7
Poland	0.0	35.7	30.7	41.9	0.0	57.0	39.7	56.5	0.0	16.0	12.9	13.5
Romania	0.6	0.0	0.0	0.0	0.0	0.0	0.0	0.0	0.0	0.0	0.0	0.0
Slovakia	0.2	0.0	0.1	0.5	0.0	0.0	0.0	0.3	0.0	0.0	6.6	5.9
Spain	0.0	6.8	5.1	6.0	0.0	4.6	3.9	5.2	0.0	6.8	7.7	8.7
Switzerland	0.0	0.0	0.1	0.1	0.0	0.0	0.2	0.3	0.0	0.0	29.2	32.8
Total	0.8	76.4	66.9	89.9	10.2	84.5	59.5	83.4	0.0	123.6	155.8	163.6

Source: Eurostat Database (See Copyright Information)

Note: 2010 entries are provisional values

EUROPEAN CROP PRODUCTION
Other Dried Pulses

(Data in 1,000 Tons, Calendar Year)

COUNTRY	Area in Production 1,000 ha				Harvested Production 1,000 t				Yield 100kg/ha			
	2010	2009	2008	2007	2010	2009	2008	2007	2010	2009	2008	2007
Austria	4.1	3.6	2.7	3.3	0.0	7.4	5.6	7.0	0.0	20.6	20.6	21.3
Belgium	0.1	0.1	0.2	0.2	0.0	0.0	0.0	0.0	0.0	0.0	0.0	0.0
Bosnia-Herzegovina	0.0	0.3	0.3	0.4	0.0	0.7	1.0	0.7	0.0	27.5	38.6	20.8
Bulgaria	2.0	2.0	1.5	2.0	0.0	9.7	6.5	7.8	0.0	8.6	11.5	12.5
Croatia	0.0	0.1	0.0	0.0	0.0	2.4	2.0	0.7	0.0	18.0	10.0	0.0
Cyprus	0.1	0.1	0.1	0.1	0.1	0.1	0.1	0.1	8.9	9.0	4.2	4.2
Czech Republic	10.2	10.2	5.7	8.5	54.0	51.9	40.9	55.0	14.7	13.0	14.2	13.3
Denmark	0.0	0.0	0.0	0.0	0.0	22.4	14.0	19.4	0.0	0.0	0.0	0.0
Estonia	0.0	0.0	0.0	0.0	11.4	7.5	3.2	9.4	0.0	0.0	0.0	0.0
Finland	0.0	0.0	0.0	0.0	12.0	11.2	7.2	10.7	0.0	0.0	0.0	0.0
France	0.0	20.1	14.7	0.0	0.0	20.1	14.7	0.0	0.0	16.8	15.5	0.0
Germany	0.0	0.0	0.0	0.0	176.7	165.9	140.6	177.5	0.0	0.0	0.0	0.0
Greece	0.0	11.2	11.2	11.8	0.0	5.5	6.1	6.7	0.0	13.0	13.0	12.9
Hungary	0.0	1.2	0.5	1.0	40.2	32.5	46.0	51.2	0.0	15.6	13.9	14.0
Italy	0.0	9.2	7.6	7.6	0.0	28.7	26.8	41.8	0.0	11.7	10.7	10.7
Latvia	0.0	0.0	0.1	0.1	0.0	2.6	1.1	1.8	0.0	0.0	10.0	10.0
Lithuania	30.5	30.3	28.9	29.5	49.0	50.3	29.1	24.2	12.7	14.9	15.4	12.7
Luxembourg	0.1	0.1	0.0	0.0	0.9	0.9	1.0	0.7	30.9	30.9	27.0	15.6
Netherlands	0.0	0.0	0.0	0.0	4.5	5.6	4.2	3.4	0.0	0.0	0.0	0.0
Poland	0.0	200.4	163.4	189.2	0.0	37.2	29.0	41.5	0.0	22.7	20.3	20.8
Portugal	12.3	12.3	12.2	13.0	0.0	0.0	0.0	0.0	0.0	0.0	0.0	0.0
Romania	0.0	0.6	0.4	0.4	46.1	30.0	36.9	17.7	0.0	7.8	6.9	7.0
Slovakia	0.0	3.0	4.0	2.6	15.0	11.7	13.6	19.3	0.0	10.6	16.6	10.4
Slovenia	0.0	0.0	0.0	0.0	1.4	1.4	3.8	5.4	0.0	0.0	0.0	0.0
Spain	0.0	76.0	53.4	72.0	0.0	168.7	158.1	194.0	0.0	7.5	9.1	8.6
Sweden	0.0	0.0	0.0	0.0	54.3	48.9	29.1	38.0	0.0	0.0	0.0	0.0
Switzerland	0.0	0.0	0.2	0.3	0.0	0.0	16.2	18.2	0.0	0.0	29.2	32.8
Turkey	0.0	1010.0	716.0	559.4	0.0	4.0	4.0	3.0	0.0	0.0	0.0	0.0
United Kingdom	0.0	0.0	0.0	0.0	0.0	151.2	91.0	0.0	0.0	0.0	0.0	0.0
Yugoslavia	0.0	0.0	0.1	0.1	0.0	0.0	2.4	1.9	0.0	0.0	8.9	8.5
Total	59.4	1390.8	1023.2	901.5	465.6	878.5	734.2	757.1	67.2	248.2	295.6	236.1

Source: Eurostat Database (See Copyright Information)

Note: 2010 entries are provisional values

EUROPEAN CROP PRODUCTION

Lentils

(Data in 1,000 Tons, Calendar Year)

COUNTRY	Area in Production 1,000 ha				Harvested Production 1,000 t				Yield 1,000 t			
	2009	2008	2007	2006	2009	2008	2007	2006	2008	2008	2007	2006
Bulgaria	1.1	2.0	1.1	1.2	0.0	1.6	1.1	1.5	0.0	8.1	10.0	12.8
Cyprus	0.1	0.1	0.1	0.1	0.0	0.0	0.0	0.0	1.2	1.3	0.8	0.8
France	0.0	8.8	6.8	8.6	0.0	11.9	7.9	11.1	0.0	13.5	11.6	13.0
Greece	0.0	2.1	2.1	2.0	0.0	2.8	2.8	2.4	0.0	13.3	13.3	12.0
Hungary	0.0	0.0	0.0	0.3	0.0	0.0	0.0	0.4	0.0	48.0	15.8	15.0
Italy	1.8	1.9	1.8	0.1	0.0	1.4	1.3	0.0	0.0	7.6	7.4	0.0
Slovakia	0.8	0.3	0.3	0.4	0.0	0.3	0.2	0.3	0.0	9.4	8.6	7.1
Spain	0.0	23.1	16.9	18.2	0.0	11.9	12.5	15.4	0.0	5.2	7.4	8.5
Turkey	0.0	0.0	319.0	389.0	0.0	375.0	131.0	535.0	0.0	0.0	4.1	13.8
Romania	0.6	0.2	0.0	0.0	0.0	0.0	0.0	0.0	0.0	0.0	0.0	0.0
Yugoslavia	0.0	0.1	0.1	0.1	0.0	0.0	0.1	0.1	0.0	0.0	8.9	8.5
Total	4.5	38.7	348.3	420.1	0.0	404.9	156.9	566.2	1.2	106.4	87.9	91.5

Source: Eurostat Database (See Copyright Information)

Note: 2010 entries are provisional values

Canadian Pulses Supply and Disposition

Commodity/ Crop Year	Area Harvested	Yield	Production	Imports	Total Supply	Exports	Domestic Use	Carry Out Stocks
	1000 ha	t/ha	1000 mt	1000 mt	1000 mt	1000 mt	1000 mt	1000 mt
Dry Peas								
2010-2011f	1322	2.17	2862	30	3678	2400	987	300
2009-2010	1487	2.27	3379	55	3880	2178	907	796
2008-2009	1582	2.26	3571	15	3841	2826	571	445
Lentils								
2010-2011f	1336	1.46	1947	25	2024	1200	374	450
2009-2010	963	1.57	1510	10	1552	1386	115	52
2008-2009	700	1.49	1043	7	1102	973	97	32
Dry Beans								
2010-2011f	127	2.00	254	52	311	245	41	25
2009-2010	114	1.96	224	53	285	255	25	5
2008-2009	125	2.12	266	54	340	282	50	8
Chickpeas								
2009-2010f	77	1.67	128	5	153	70	68	15
2009-2010f	30	2.49	76	5	143	66	57	20
2008-2009	51	1.30	67	4	163	48	62	61

f-forecast

Source: Canada Pulse and Special Crops Outlook, 01/28/2010, Agriculture and Agri-Food Canada

Selected special crop data, Canada, by crop year

	Average 2004/2005 to 2008/2009	Total		August to December	
		2008/2009	2009/2010 ^r	2009/2010 ^r	2010/2011 ^p
Dried beans					
Area harvested					
Thousands of hectares	149.1	125.5	114.3	114.3	127.2
Thousands of acres	368.4	309.6	282.6	282.6	314.6
Yield					
Kilograms per hectare	1,920.00	2,100.00	2,000.00	2,000.00	2,000.00
Hundredweight per acre	17.2	19	17.5	17.5	17.8
thousands of metric tonnes					
Production	288.2	266.2	223.8	223.8	253.7
Imports 1	44.1	54.4	54.8	24.7	31.5
Exports 1	302.8	282.4	255.8	107.6	107.8
	Average 2004/2005 to 2008/2009	Total		August to December	
		2008/2009	2009/2010 ^r	2009/2010 ^r	2010/2011 ^p
Dry peas					
Area harvested					
Thousands of hectares	1,353.20	1,582.20	1,487.20	1,487.20	1,322.10
Thousands of acres	3,344.00	3,910.00	3,675.00	3,675.00	3,267.00
Yield					
Kilograms per hectare	2,240.00	2,300.00	2,300.00	2,300.00	2,200.00
Bushels per acre	33.3	33.6	33.8	33.8	32.2
thousands of metric tonnes					
Production	3,023.40	3,571.30	3,379.40	3,379.40	2,862.40
Imports 1	49	15.1	55.1	31.7	20.8
Exports 1	2,283.30	2,825.60	2,177.80	816.6	1,425.40
Stocks on farm	155.6	190	525	2,490.00	1,855.00
In commercial positions	185	255	270	255	315
Ending stocks	340.6	445	795	2,745.00	2,170.00

Selected special crop data, Canada, by crop year

	Average 2004/2005 to 2008/2009	Total		August to December	
		2008/2009	2009/2010 ^r	2009/2010 ^r	2010/2011 ^p
Lentils					
Area harvested					
Thousands of hectares	666.1	700.2	963.2	963.2	1,335.50
Thousands of acres	1,646.00	1,730.00	2,380.00	2,380.00	3,300.00
Yield					
Kilograms per hectare	1,354.00	1,490.00	1,570.00	1,570.00	1,460.00
Pounds per acre	1,209.40	1,329.00	1,399.00	1,399.00	1,301.00
thousands of metric tonnes					
Production	910	1,043.20	1,510.20	1,510.20	1,947.10
Imports 1	9.3	7.4	9.5	5.9	18.3
Exports 1	751.5	973	1,386.40	724.1	519.8
Stocks on farms	173.4	15	26	750	1,380.00
In commercial positions	28.4	17	20	73	87
Ending stocks	201.8	32	46	823	1,467.00
	Average 2004/2005 to 2008/2009	Total		August to December	
		2008/2009	2009/2010 ^r	2009/2010 ^r	2010/2011 ^p
Chickpeas					
Area harvested					
Thousands of hectares	91	42.4	40.3	40.3	76.9
Thousands of acres	225	105	100	100	190
Yield					
Kilograms per hectare	1,382.00	1,580.00	1,870.00	1,870.00	1,670.00
Pounds per acre	1,233.00	1,409.00	1,667.00	1,667.00	1,489.00
thousands of metric tonnes					
Production	122	67	75.5	75.5	128.3
Imports 1	5.6	4.1	5	2.3	2.7
Exports 1	69.5	53	65.6	30.6	37.6
Stocks on farms	36.8	50	10	87	95
In commercial positions	7.8	12	10	7	12
Ending stocks	44.6	62	20	94	107

Source: Cereals and Oilseeds Review, 22-007-x, dated January 2011, Statistics Canada

Exports of Special Crops, by country of final destination, Canada

	Average 2004/2005 to 2008/2009	Total		August to December		December 2010 ^P
		2008/2009	2009/2010 ^r	2009/2010 ^r	2010/2011 ^P	
metric tonnes						
Dry peas						
Belgium	35,977	6,953	3,672	866	448	141
Denmark	20,233	28,216	0	0	0	0
Italy	7,282	5,266	5,063	2,801	2,401	517
Netherlands	4,461	2,415	1,170	854	1,320	254
Norway	17,369	34,081	0	0	0	0
Spain	308,033	21,871	8,424	5,517	47,328	43,708
United Kingdom	6,353	10,305	5,783	2,386	1,586	409
Western Europe total 1	406,894	123,664	28,750	14,222	53,632	45,221
Eastern Europe total 1	7,825	5,852	8,370	4,007	2,660	987
United Arab Emirates	48,264	86,819	13,487	3,282	13,731	307
Middle East total 1	90,736	148,976	49,225	16,859	24,575	2,444
Algeria	6,548	3,178	6,894	2,887	5,185	178
South Africa	16,015	18,496	16,023	4,021	1,898	257
Africa total 1	54,333	60,935	59,473	20,477	19,134	4,998
Bangladesh	230,651	474,714	308,638	399	124,407	43
China	246,056	316,062	417,798	84,512	252,606	110,698
India	912,464	1,314,600	1,085,218	616,689	754,687	71,607
Japan	9,587	8,343	9,643	3,607	1,597	464
Malaysia	2,246	2,056	2,599	904	682	120
Pakistan	59,957	42,176	10,149	1,414	73,822	0
Philippines	11,641	11,691	15,174	3,232	4,943	1,902
Taiwan	11,532	12,461	12,496	5,278	5,620	1,318
Asia total 1	1,507,078	2,204,772	1,893,911	720,639	1,225,505	187,674
Oceania total 1	2,674	2,653	3,014	958	702	42
Colombia	32,045	37,364	21,180	6,840	11,882	1,708
Ecuador	3,989	4,278	3,001	1,377	694	22
Peru	18,126	14,044	9,222	2,394	5,385	1,233
Venezuela	14,113	13,124	18,842	8,509	12,724	1,601
South America total 1	85,954	86,423	72,706	24,829	37,059	5,762
Cuba	73,990	135,656	21,727	0	44,383	24,000
Mexico	8,553	8,853	8,606	4,301	3,918	622
Central America and Antilles	91,009	152,972	38,233	7,089	52,359	24,876
United States	36,838	39,335	24,168	7,535	9,806	2,385
North America total 1	36,838	39,335	24,168	7,535	9,806	2,385
Dry pea total	2,283,341	2,825,580	2,177,850	816,615	1,425,432	274,390

Exports of Special Crops, by country of final destination, Canada

	Average 2004/2005 to 2008/2009	Total		August to December		December 2010 ^P
		2008/2009	2009/2010 ^r	2009/2010 ^r	2010/2011 ^P	
Chickpeas						
Italy	4,045	3,968	5,112	2,137	1,937	215
Spain	4,593	2,628	3,582	980	756	235
Western Europe total 1	17,402	10,298	14,781	5,020	4,907	879
Eastern Europe total 1	280	340	297	131	160	0
Egypt	1,406	781	3,114	1,972	3,098	451
Jordan	5,867	2,954	5,081	2,056	3,268	1,527
Middle East total 1	13,077	6,538	15,511	7,840	21,247	2,976
Africa total 1	2,783	1,703	3,459	689	1,384	0
Bangladesh	1,075	0	0	0	0	0
India	7,566	6,507	7,518	6,660	1,450	108
Pakistan	12,830	10,517	10,416	3,956	2,053	376
Asia total 1	22,054	17,335	18,553	11,054	3,638	495
Oceania total 1	63	151	192	43	34	0
Colombia	4,008	3,238	1,080	342	884	86
South America total 1	5,828	3,881	1,285	414	1,184	86
Central America and Antilles	1,841	2,445	2,233	485	758	184
United States	6,147	10,297	9,293	4,876	4,296	685
North America total 1	6,147	10,297	9,293	4,876	4,296	685
Chickpea total	69,473	52,988	65,603	30,552	37,607	5,306

Exports of Special Crops, by country of final destination, Canada

	Average 2004/2005 to 2008/2009	Total		August to December		December 2010 ^P
		2008/2009	2009/2010 ^r	2009/2010 ^r	2010/2011 ^P	
Lentils						
Belgium	9,818	7,121	5,400	1,773	1,735	424
France	9,307	9,281	10,668	4,608	3,357	1,548
Germany	13,318	10,207	15,557	4,717	5,358	946
Greece	9,950	9,372	7,557	4,430	5,489	357
Italy	22,408	21,344	25,327	15,202	12,386	2,006
Spain	25,595	17,648	24,862	9,003	12,911	3,647
United Kingdom	5,394	5,235	8,869	3,187	4,568	1,207
Western Europe total 1	102,936	87,759	103,843	45,264	50,445	11,500
Eastern Europe total 1	10,689	9,215	10,192	4,825	5,428	1,565
Egypt	38,499	54,614	61,729	38,304	30,971	4,339
Iran	6,819	7,029	3,782	2,821	1,549	597
Israel	5,312	5,068	5,849	2,931	3,590	1,598
Lebanon	5,599	8,865	8,535	4,068	1,497	495
Turkey	78,362	198,911	226,072	113,472	97,251	28,704
United Arab Emirates	45,543	70,371	95,693	53,012	37,094	7,935
Middle East total 1	191,278	363,466	420,333	223,205	178,438	44,995
Algeria	62,508	54,404	76,188	32,858	36,745	6,618
Bangladesh	36,425	46,044	129,459	87,332	25,182	5,355
India	60,673	67,999	283,995	195,795	61,739	3,054
Pakistan	32,682	50,007	41,718	18,239	29,529	5,786
Sri Lanka	22,057	60,145	74,342	34,200	28,786	9,965
Asia total 1	153,854	226,000	531,836	336,670	146,102	24,284
Oceania total 1	1,284	1,522	1,729	450	414	62
Brazil	11,998	5,751	13,743	6,203	6,259	314
Chile	16,957	13,714	18,487	2,378	4,131	623
Colombia	57,714	63,381	64,480	20,140	24,634	7,213
Ecuador	16,440	16,592	17,074	5,537	6,185	2,470
Peru	19,132	18,957	17,426	3,621	8,834	25,551
Venezuela	22,872	24,378	24,642	7,648	20,071	4,998
South America total 1	152,303	150,140	158,871	47,306	70,977	18,920
Mexico	28,468	29,400	37,115	16,209	15,871	4,709
Panama	6,375	6,520	7,191	2,936	2,151	343
Trinidad and Tobago	2,036	1,617	1,918	711	620	117
Central America and Antilles	39,161	39,529	48,120	20,575	19,117	5,308
United States	9,771	17,996	9,582	4,384	4,671	944
Lentil total	751,602	972,992	1,386,378	724,095	519,779	116,592

Exports of Special Crops, by country of final destination, Canada

	Average 2004/2005 to 2008/2009	Total		August to December		December 2010 ^P
		2008/2009	2009/2010 ^r	2009/2010 ^r	2010/2011 ^P	
Dried beans						
Belgium	2,100	1,360	804	176	219	156
France	3,630	1,755	760	223	446	69
Germany	2,280	1,483	1,740	529	1,789	388
Greece	6,895	8,319	5,371	3,426	3,811	724
Italy	21,184	18,865	21,875	10,553	9,201	862
Netherlands	4,632	1,779	2,229	993	517	60
Portugal	5,780	5,514	4,302	1,310	2,745	325
Spain	4,608	2,056	2,754	1,306	2,145	497
United Kingdom	64,130	62,294	56,606	22,468	27,507	4,058
Western Europe total 1	117,601	105,955	98,868	41,949	49,035	7,265
Eastern Europe total 1	7,756	6,055	4,427	2,290	3,282	770
Middle East total 1	6,465	8,229	8,710	3,738	4,867	627
Angola	12,555	13,520	20,071	2,363	6,219	2,339
South Africa	697	150	0	0	335	0
Africa total 1	16,238	16,163	22,728	3,999	6,860	2,344
Japan	15,355	14,071	10,723	4,606	5,086	2,598
Asia total 1	22,013	18,002	15,561	6,405	8,388	3,909
New Zealand	3,385	6,029	5,826	2,169	2,170	236
Oceania total 1	6,993	9,925	11,120	3,305	3,009	475
South America total 1	4,912	4,836	2,920	415	2,717	283
Dominican Republic	11,768	5,778	7,732	2,438	1,464	573
Central America and Antilles	27,804	33,209	20,693	7,843	5,252	1,250
United States	88,942	80,074	70,746	37,698	24,366	3,280
North America total 1	88,942	80,074	70,746	37,698	24,366	3,280
Dried bean total	298,724	282,449	255,773	107,642	107,776	20,202

1. Exports to individual countries are included in the continental totals.

^p preliminary

^r revised

Source(s): Statistics Canada, International Trade Division.

Table 1-2

November 2010 estimates of production of principal field crops — Imperial, Canada

Commodity	Area		Yield on harvested area	Production
	seeded	harvested		
	thousands of acres		bushels per acre	bushels
Canada				
Dry peas	3,450.00	3,267.00	32.2	105,175
Dry white beans	120	116	19.4	2,255
Dry coloured beans	216.1	198.6	16.8	3,339
Quebec				
	thousands of acres		hundredweight per acre	hundredweight
Total dry beans	11.1	10.6	14.5	154
Ontario				
	thousands of acres		hundredweight per acre	hundredweight
Dry white beans	85	85	21.4	1,820
Dry coloured beans	55	50	20.6	1,030
Manitoba				
	thousands of acres		hundredweight per acre	hundredweight
Dry peas	80	72	31.9	2,300
Dry white beans	35	31	14	435
Dry coloured beans	100	95	14.7	1,400
Saskatchewan				
	thousands of acres		hundredweight per acre	hundredweight
Dry peas	2,460.00	2,300.00	29.8	68,425
Lentils	3,340.00	3,165.00	1,282	4,057,000
Chick peas	205	190	1,489	282,860
Alberta				
	thousands of acres		bushels per acre	bushels
Dry peas	910	895	38.5	34,450
Dry coloured beans	50	43	17.6	755
Lentils	140	135	1,744	235,400
Western Canada				
	thousands of acres		bushels per acre	bushels
Dry peas	3,450.00	3,267.00	32.2	105,175

1. The seeded area remaining in June after winterkill.

Source: Field Crop Reporting Series 22-002-x, No. 8, Dated December 2010, Statistics Canada

Australian Crop Production

COMMODITY	Area Planted (1,000 Acres)					Yield (Pounds)					Production (1000 cwt)					
	Crop Year and 5 Year Average	2011	2010	2009	2008	5 Year	2011	2010	2009	2008	5 Year	2011	2010	2009	2008	5 Year
Lupins		1403.53	1724.76	1425.77	1121.83	1766.77	825.12	809.11	1112.33	1577.42	1115.01	11581	13955	15859	7414	17696
Field Peas		721.53	704.24	741.30	724.00	803.08	1356.67	1132.35	719.17	980.77	897.45	9789	7974	5331	6003	7101
Chickpeas		1349.17	896.97	835.20	756.13	704.24	689.02	1111.29	1188.13	936.14	906.52	9296	9968	9923	7011	7078
Broad (Faba) Beans		358.30	318.76	308.88	328.64	373.12	1662.99	1524.91	979.04	1260.94	1060.62	5958	4861	3024	3091	4144
Lentils		392.89	256.98	289.11	321.23	363.24	1693.30	1246.46	495.87	927.44	824.93	6653	3203	1434	2934	2979

Australian Crop Production by Province

PROVINCE	Lupins								Chickpeas							
	Crop Year/5 Year Avg	Harvested Acres (1,000)				Production (1,000MT)				2011	2010	2009	5 Year	2011	2010	2009
2011		2010	2009	5 Year	2011	2010	2009	5 Year								
New South Wales	222.39	254.51	108.72	165.56	96.00	77.00	37.00	44.00	872.26	526.32	491.73	427.48	234.00	269.00	292.00	199.00
Victoria	66.72	86.49	88.96	93.90	43.00	31.00	18.00	25.00	61.78	51.89	108.72	74.13	48.00	19.00	17.00	18.00
Queensland	0.00	0.00	0.00	0.00	0.00	0.00	0.00	0.00	415.13	281.69	212.51	180.38	112.00	139.00	126.00	90.00
Western Australia	966.16	1250.33	1097.12	1334.34	270.00	639.00	600.00	649.00	22.24	4.94	7.41	4.94	5.00	3.00	4.00	2.00
South Australia	148.26	130.96	130.96	170.50	108.00	75.00	52.00	70.00	24.71	14.47	14.83	14.83	17.00	16.00	4.00	6.00
TOTAL	1403.53	1722.29	1425.77	1764.29	517.00	822.00	707.00	788.00	1396.12	879.32	835.20	701.76	416.00	446.00	443.00	315.00

PROVINCE	Broad (Faba) Beans								Lentils							
	Crop Year/5 Year Avg	Harvested Acres (1,000)				Production (1,000MT)				2011	2010	2009	5 Year	2011	2010	2009
2011		2010	2009	5 Year	2011	2010	2009	5 Year								
New South Wales	98.84	111.20	71.66	76.60	52.00	65.00	35.00	47.00	2.47	0.00	0.00	0.00	0.00	0.00	0.00	0.00
Victoria	111.20	54.36	88.96	103.78	88.00	35.00	27.00	35.00	185.33	128.49	175.44	212.51	132.00	50.00	25.00	64.00
Queensland	7.41	4.94	0.00	2.47	4.00	3.00	0.00	1.00	0.00	0.00	0.00	0.00	0.00	0.00	0.00	31.00
Western Australia	7.41	9.88	4.94	9.88	3.00	5.00	4.00	4.00	0.00	0.00	0.00	0.00	0.00	0.00	0.00	3.00
South Australia	135.91	140.85	143.32	182.85	130.00	110.00	68.00	98.00	205.09	128.49	111.20	145.79	164.00	93.00	39.00	66.00
TOTAL	360.77	321.23	308.88	375.59	277.00	218.00	134.00	185.00	392.89	256.98	286.64	358.30	296.00	143.00	64.00	164.00

Note: 2011 data is an ABARE estimate

Source: Australian Bureau of Agriculture and Resource Economics and Sciences, Australian Crop Report dtd 07 Dec 2010

Australian supply and disposal of pulses

COMMODITY	Production (1,000MT)					
	2005-06	2006-07	2007-08	2008-09	2009-10	2010-11
Lupins	1,285	470	662	708	823	517
Field Peas	585	140	268	238	256	437
Chickpeas	150	229	313	443	445	415

COMMODITY	Apparent Domestic Use (1,000MT)					
	2005-06	2006-07	2007-08	2008-09	2009-10	2010-11
Lupins	551.00	437.00	665.00	499.00	350.00	262
Field Peas	214.00	114.00	189.00	123.00	238.00	295
Chickpeas	9.00	20.00	22.00	24.00	31.00	36

COMMODITY	Exports (1,000MT)					
	2005-06	2006-07	2007-08	2008-09	2009-10	2010-11
Lupins	494.00	93.00	77.00	304.00	342.00	255
Field Peas	252.00	138.00	141.00	137.00	171.00	245
Chickpeas	161.00	241.00	222.00	506.00	481.00	375

PROVINCE	Field Peas								
	Crop Year/5 Yr Avg	Harvested Acres (1,000)				Production (1,000MT)			
		2011	2010	2009	5 Year	2011	2010	2009	5 Year
New South Wales	140.85	113.67	71.66	98.84	55.00	33.00	16.00	24.00	
Victoria	111.20	128.49	168.03	192.74	68.00	75.00	25.00	67.00	
Queensland	0.00	0.00	0.00	0.00	0.00	0.00	0.00	0.00	
Western Australia	177.91	148.26	200.15	172.97	66.00	65.00	82.00	71.00	
South Australia	291.58	313.82	298.99	338.53	248.00	183.00	114.00	154.00	
TOTAL	721.53	704.24	738.83	803.08	437.00	356.00	237.00	316.00	

Note: 2011 data is an ABARE estimate

Source: Australian Bureau of Agriculture and Resource Economics and Sciences, Australian Crop Report dtd 07 Dec 2010

South African Dry Bean Production and Consumption

Production Year	Gross Value R1,000	Marketed by Producers	Consumption Tons	Imports	Exports	Market Year Jan-Dec
2008/09	531,762	53,510	150,000	93,133	1,300	2009
2007/08	469,644	54,100	120,000	60,992	3,398	2008
2006/07	346,423	39,500	120,000	84,113	2,200	2007
2005/06	324,729	67,000	130,000	6,440	1,226	2006
2004/05	244,412	70,000	130,000	50,203	9,341	2005

South African Dry Bean Production by Province

Province	1,000 Tons					
	2010/11f	2009/10	2008/09	2007/08	2006/07	2005/06
Western Cape	0.30	0.30	0.28	0.25	0.34	0.45
Eastern Cape	0.10	0.48	0.30	0.00	0.00	0.00
Northern Cape	1.00	1.20	0.25	0.60	0.22	0.90
Free State	15.00	14.40	28.80	21.45	12.38	19.80
KwaZulu-Natal	4.80	4.50	4.80	5.95	3.00	0.90
Limpopo	10.40	9.35	6.75	6.80	4.90	0.60
Mpumalanga	12.00	12.08	15.75	15.00	13.30	27.50
Gauteng	2.60	4.55	5.10	5.08	3.40	6.30
Northwest	7.00	5.40	5.00	3.85	2.00	10.80
Total	53.20	52.26	67.03	58.98	39.54	67.25

South African Production and Producer Price

Year	Area Planted 1,000 Acres	Total Production 1,000 t	Producer Prices R per 70kg Bag (R per 154.35 lbs)			
			Large White Kidney	Small White Kidney	Sugar (Lima) Beans	Haricot Beans NESOI
2008/09	108.72	74	390.00	356.50	314.50	Not Available
2007/08	108.72	65	595.24	462.18	539.22	525.21
2006/07	126.02	44	649.95	363.44	463.12	350.00
2005/06	135.91	74	406.00	294.00	308.00	224.00
2004/05	121.08	79	315.00	210.00	217.00	140.00

Source: Directorate of Agriculture, Republic of South Africa, Abstract of Agricultural Statistics 2010

Brazil Dry Bean Harvested Area 2010-2011				
Year	Beans (shelled) 1st Harvested	Beans (shelled) 2nd Harvested	Beans (grain) 3rd Harvested	Beans (grain) Total Harvested
	Area	Area	Area	Area
	ha	ha	ha	ha
2011	2,319,976	1,353,027	189,375	3,862,378
2010	2,043,388	1,256,349	186,876	3,486,613

Brazil Dry Bean Harvested Yield 2010-2011				
Year	Beans (shelled) 1st Harvested	Beans (shelled) 2nd Harvested	Beans (grain) 3rd Harvested	Beans (grain) Total Harvested
	Yield	Yield	Yield	Yield
	kg/ha	kg/ha	kg/ha	kg/ha
2011	1,035	2,262	24,521	999
2010	950	2,536	22,612	924

Brazil Dry Bean Production Yield 2010-2011				
Year	Beans (shelled) 1st Harvested	Beans (shelled) 2nd Harvested	Beans (grain) 3rd Harvested	Beans (grain) Total Harvested
	Production	Production	Production	Production
	t	t	t	t
2011	2,031,334	1,400,032	428,434	3,859,800
2010	1,556,252	1,192,968	473,854	3,223,074

Source: Brazil Ministry of Agriculture, Livestock, and Supply

Chile Dry Bean Area, Production, and Performance by Crop Year								
Commodity	Area		Annual	Production		Annual	Yield	
	ha		Change	100kg (qqm)		Change	(qqm)100kg/ha	
	2008/9	2009/10	(%)	2008/9	2009/10	(%)	2008/9	2009/10
Dry Beans	16,709	13,509	-19.20	283,957	234,195	-17.50	17.00	17.30
Lentils	955	1,222	28.00	5,639	7,191	27.50	5.90	5.90
Chickpeas	1,887	1,885	-0.10	19,230	29,888	55.40	10.20	15.90
Dry peas	2,752	5,480	-9.90	33,809	22,896	-32.20	12.30	9.20

Source: Coordination Group of Agricultural Statistics - LAEC/IBGE, DPE, COAGRO, Systematic Survey of Agricultural Production - February 2011

India Crop Area Harvested, Production, and Yield Vigna Mungo Beans

	Area Harvested (1,000 Acres)	Yield (Pounds/Acre)	Production (1000 cwt)
2005-06	17,124.40	13.87	123,458.72
2006-07	18,508.19	13.26	139,552.45
2007-08	18,631.75	14.70	126,765.65
2008-09	19,496.61	12.53	155,646.17
2009-10	20,287.35	12.52	162,039.57
5 Year Avg	18,809.66	13.38	141,492.51

India Crop Area Harvested, Production, and Yield Pigeon Peas

	Area Harvested (1,000 Acres)	Yield (Pounds/Acre)	Production (1000 cwt)
2005-06	8,846.37	17.37	50,926.72
2006-07	5,708.13	8.41	67,902.30
2007-08	7,610.85	15.21	50,044.87
2008-09	5,609.29	9.98	56,217.81
2009-10*	6,301.19	8.74	72,091.07
5 Year Avg	6,815.17	11.94	297,182.78

India Crop Area Harvested, Production, and Yield Lentils

	Area Harvested (1,000 Acres)	Yield (Pounds/Acre)	Production (1000 cwt)
2005-06	3,632.45	15.84	22928.05
2006-07	3,731.29	17.10	21825.74
2007-08	3,632.45	17.34	20943.89
2008-09	3,237.08	16.14	20062.04
2009-10*	3,410.05	19.10	17857.42
5 Year Avg	3,528.66	17.10	103,617.14

India Crop Area Harvested, Production, and Yield Total Pulses

	Area Harvested (1,000 Acres)	Yield (Pounds/Acre)	Production (1000 cwt)
2006-07	57,303.74	18.30	313,056.04
2007-08	58,391.00	17.94	325,401.91
2008-09	54,585.58	16.99	321,213.13
2009-10*	57,699.11	17.93	321,874.52
2010-11**	27,576.96	20.85	132,277.20
5 Year Avg	51,111.28	18.40	1,413,822.81

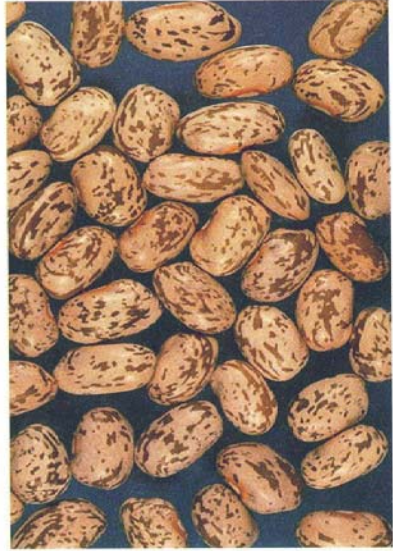
*\$th Estimate **First Estimate

India's Imports and Exports of Pulses by Year (1000 tonnes)

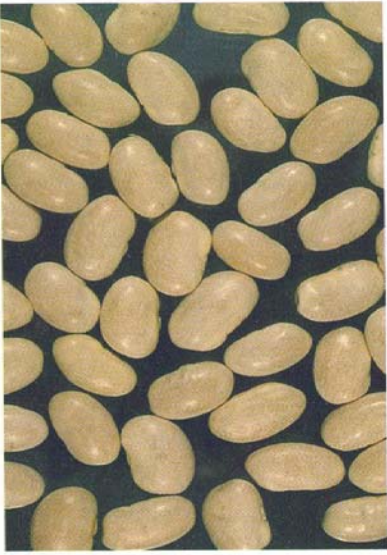
Year	09-10P	08-09	07-08	06-07	05-06	04-05	03-04	10 Year Average
Imports	3,448.4	2,474.1	2,835.1	2,271.0	1,696.0	1,339.5	1,723.3	2,221.92
Exports	100.0	136.3	164.2	250.7	447.4	271.2	153.9	216.67

P - Provisional

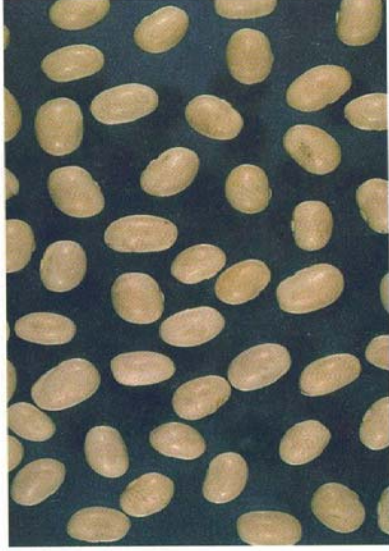
Source: India, Directorate of Economics and Statistics, Department of Agriculture and Cooperatiperation, Agricultural Statistics at a Glance 2010



Pinto



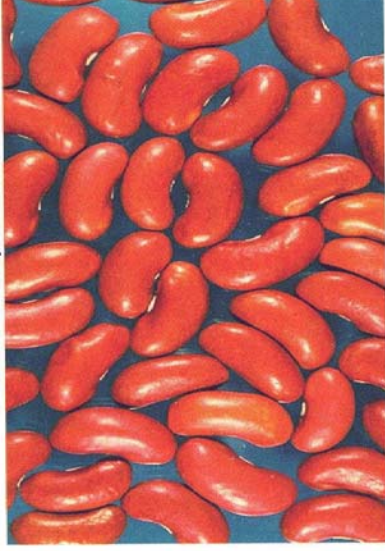
Great Northern



Navy



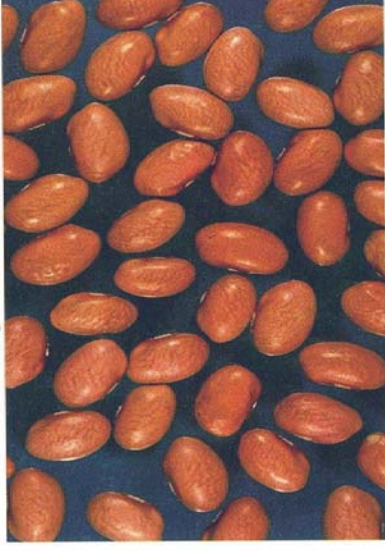
Black



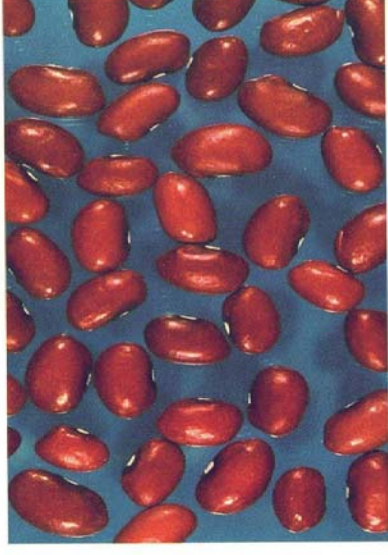
Light Red Kidney



Anasazi



Pink



Small Red