

**THE VISUAL AIDS ON THE FOLLOWING
PAGES ARE FOR REFERENCE ONLY AND
NOT INTENDED FOR OFFICIAL USE.**

**TO PURCHASE OFFICIAL VISUAL AIDS PLEASE CONTACT
THE SPECIALTY CROPS INSPECTION DIVISION'S
EQUIPMENT AND FORMS DEPOT**

**USDA, AMS, FVP, SCI
831 MITTEN ROAD, ROOM 200
BURLINGAME, CA 94010
PHONE: 650-552-9073
FAX: 650-552-9147**

[EQUIPMENT CATALOG](#)

PEARS AFFECTED BY PEAR PSYLLA



Left: Moderately scattered
Right: Heavily concentrated

C-1
PEAR PSYLLA
MAY 1990 (Previously January 1964)

PEARS

SLIDE 134 -- PSYLLA



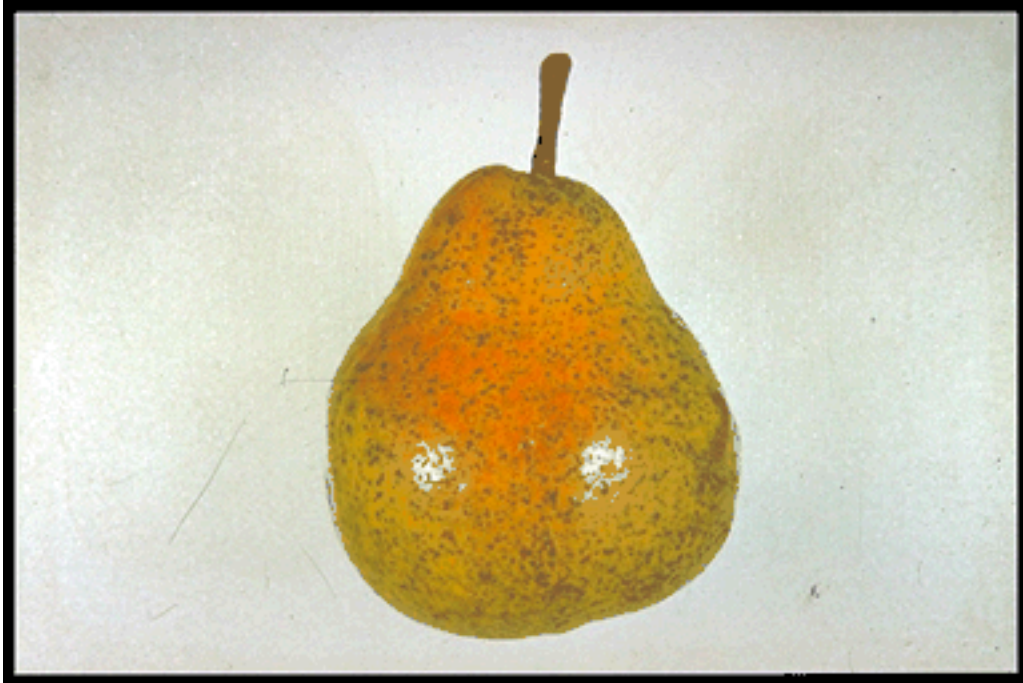
PEARS

SLIDE 135 -- PSYLLA



PEARS

SLIDE 258 – BARTLETT LENTICLE RUSSETING



PEARS

SLIDE 259 – BARTLETT SPRAYBURN APHIDS



PEARS

SLIDE 260 – BARTLETT RUSSETING

