

Bean Market News 1998 Summary



USDA Agricultural Marketing Service



USDA - AMS, LIVESTOCK AND GRAIN MARKET NEWS

711 "O" Street
 Greeley, Colorado 80631
 Telephone: (970) 353-9750 FAX: (970) 353-9790
 Internet Access: WWW.AMS.USDA.GOV



TABLE OF CONTENTS

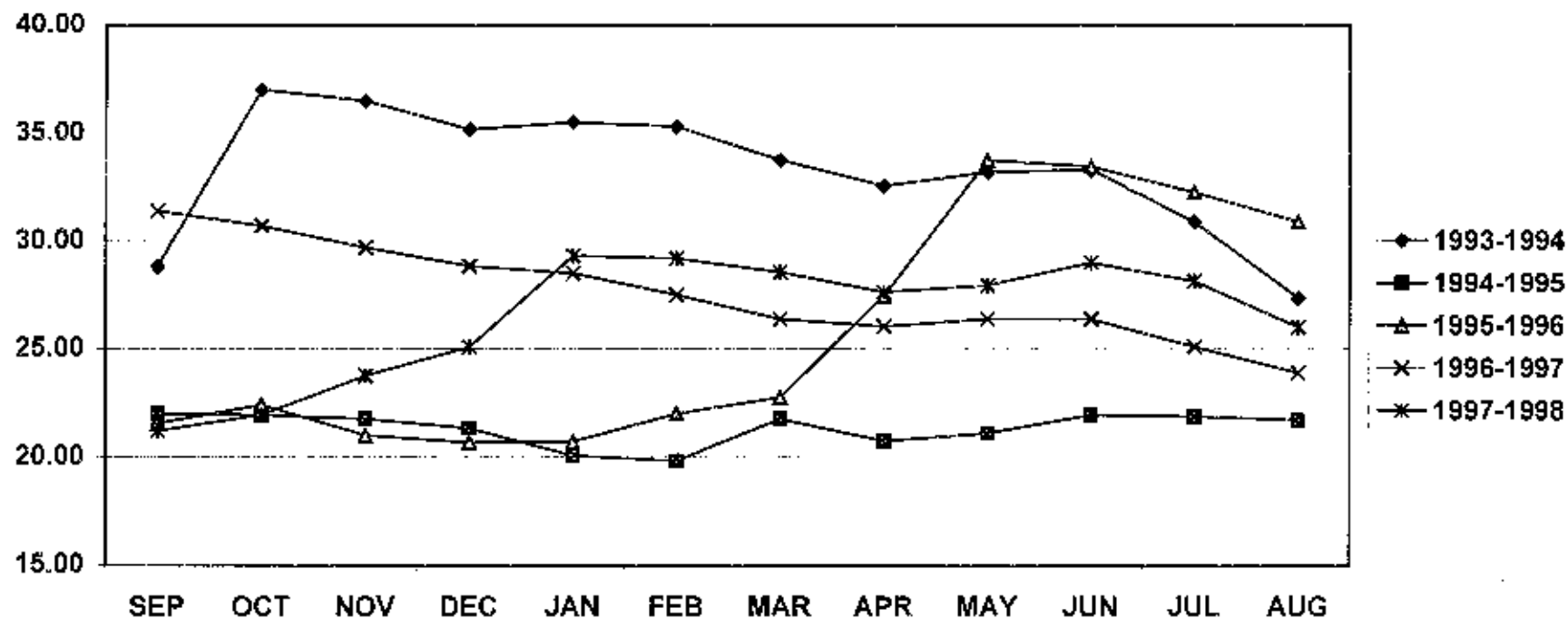
Dealer Price Trends - Graphs.....	1-4
Pinto - Northern Colorado.....	1
Pinto - North Dakota/Minnesota.....	2
Pea Bean - Michigan.....	3
Great Northern - Western Nebraska/Eastern Wyoming.....	4
 Monthly Average Prices.....	 5-14
Dealer - Pinto, Great Northern, Small Red, Pink.....	5
Grower - Pinto, Great Northern, Small Red, Pink.....	6
Dealer - Black, Cranberry, Light Red Kidney.....	7
Grower - Black, Cranberry, Light Red Kidney.....	8
Dealer - Small White, Pea Bean, Dark Red Kidney.....	9
Grower - Small White, Pea Bean, Dark Red Kidney.....	10
Dealer - Austrian Winter Pea, Lentil, Green Pea Split and Whole, Yellow Pea Split and Whole.....	11
Grower - Austrian Winter Pea, Lentil, Green Pea Split and Whole, Yellow Pea Split and Whole.....	12
Dealer - Light Red Kidney, Baby Lima, Large Lima, Blackeye, Pink, Garbanzo (California).....	13
Grower - Light Red Kidney, Baby Lima, Large Lima, Blackeye, Pink, Garbanzo (California).....	14
 Dry Edible Beans, U.S. Production by Commercial Class FY Total and Canadian Crop Production.....	 15
 Dry Edible Beans, Production by Commercial Class by State.....	 16-17
 Dry Bean, Pea, and Lentil Production - USDA, NASS.....	 18
 Dry Pea and Lentil Production - USADPLC.....	 19

Dry Bean, U.S. Exports by Country of Destination.....	20-21
Dry Pea, U.S. Exports by Country of Destination.....	22-23
U.S. Exports, Dry Beans and Dry Ripe Peas FY Totals.....	24
U.S. Exports, by Month, Dry Beans - Graphs.....	25-28
Pea Bean, Great Northern, Large Lima, Baby Lima.....	25
Light Red Kidney, Dark Red Kidney, Pinto, Black.....	26
Seed Beans, Small Reds, White n.e.c., Beans n.e.c.....	27
Green Pea, Lentil, Seed Pea, Yellow Pea.....	28
Canadian Exports by Country of Destination.....	29-31
USDA/CCC Purchases of Dry Edible Beans, Peas, and Lentils.....	31
USDA/F&V Purchases for Domestic Feeding Programs.....	32
World Pulse Production.....	33
World Dry Bean Production.....	34
World Garbanzo Production.....	35
World Pea Production.....	36

Dealer Monthly Average Price
Per Cwt By Crop Year Fob
PINTOS - NORTHERN COLORADO

	SEP	OCT	NOV	DEC	JAN	FEB	MAR	APR	MAY	JUN	JUL	AUG	AVG
1993-1994	28.81	37.00	36.50	35.17	35.50	35.31	33.75	32.56	33.19	33.30	30.88	27.35	33.28
1994-1995	22.00	21.94	21.75	21.33	20.05	19.81	21.75	20.75	21.10	21.94	21.88	21.70	21.33
1995-1996	21.56	22.40	21.00	20.67	20.70	22.00	22.75	27.45	33.75	33.44	32.25	30.88	25.74
1996-1997	31.38	30.70	29.69	28.83	28.50	27.50	26.38	26.05	26.38	26.38	25.10	23.88	27.56
1997-1998	21.20	21.94	23.75	25.08	29.31	29.19	28.55	27.63	27.94	29.00	28.13	26.00	26.48

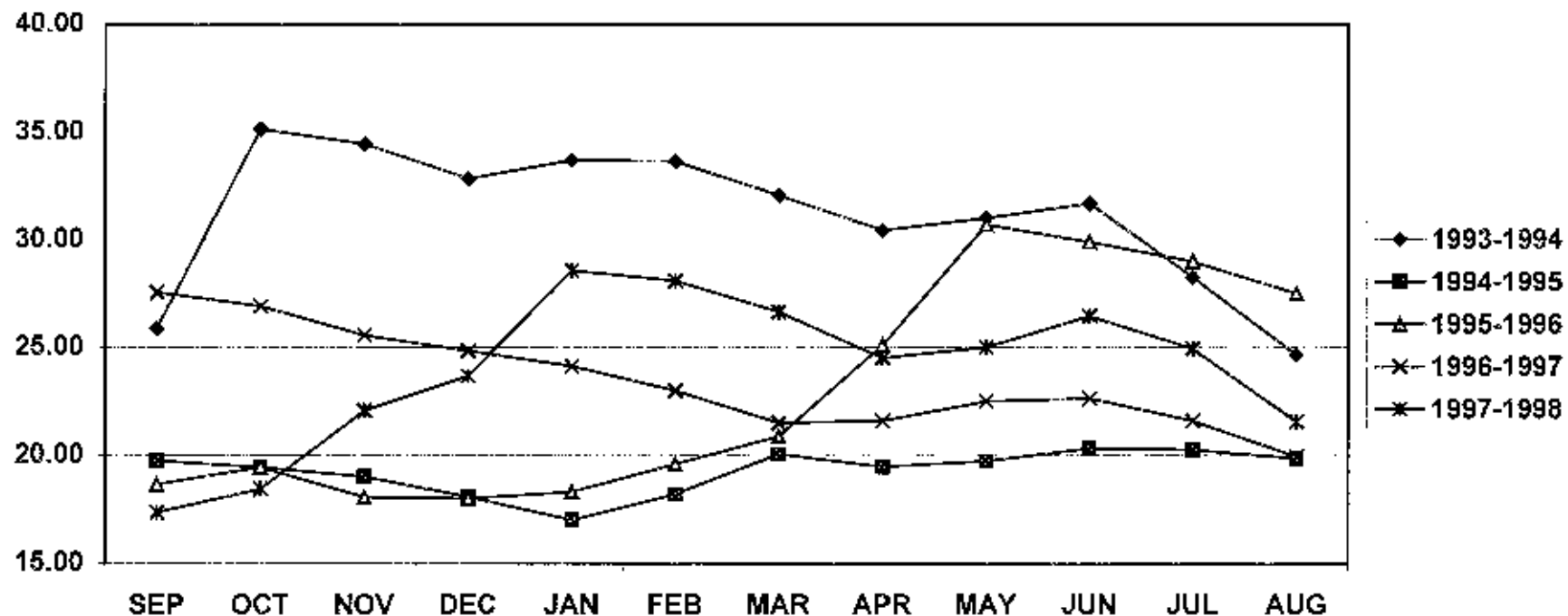
Pintos - Northern Colorado



**Dealer Monthly Average Price
Per Cwt By Crop Year Fob
PINTOS - NORTH DAKOTA/MINNESOTA**

	SEP	OCT	NOV	DEC	JAN	FEB	MAR	APR	MAY	JUN	JUL	AUG	AVG
1993-1994	25.88	35.13	34.45	32.83	33.69	33.63	32.06	30.44	31.00	31.68	28.25	24.65	31.14
1994-1995	19.75	19.44	19.00	18.08	17.00	18.19	20.05	19.47	19.73	20.31	20.25	19.85	19.26
1995-1996	18.66	19.43	18.06	18.00	18.30	19.59	20.88	25.10	30.69	29.88	28.98	27.50	22.92
1996-1997	27.56	26.90	25.56	24.83	24.13	23.00	21.50	21.60	22.50	22.63	21.60	19.94	23.48
1997-1998	17.34	18.44	22.06	23.67	28.56	28.09	26.65	24.50	25.00	26.45	24.94	21.56	23.94

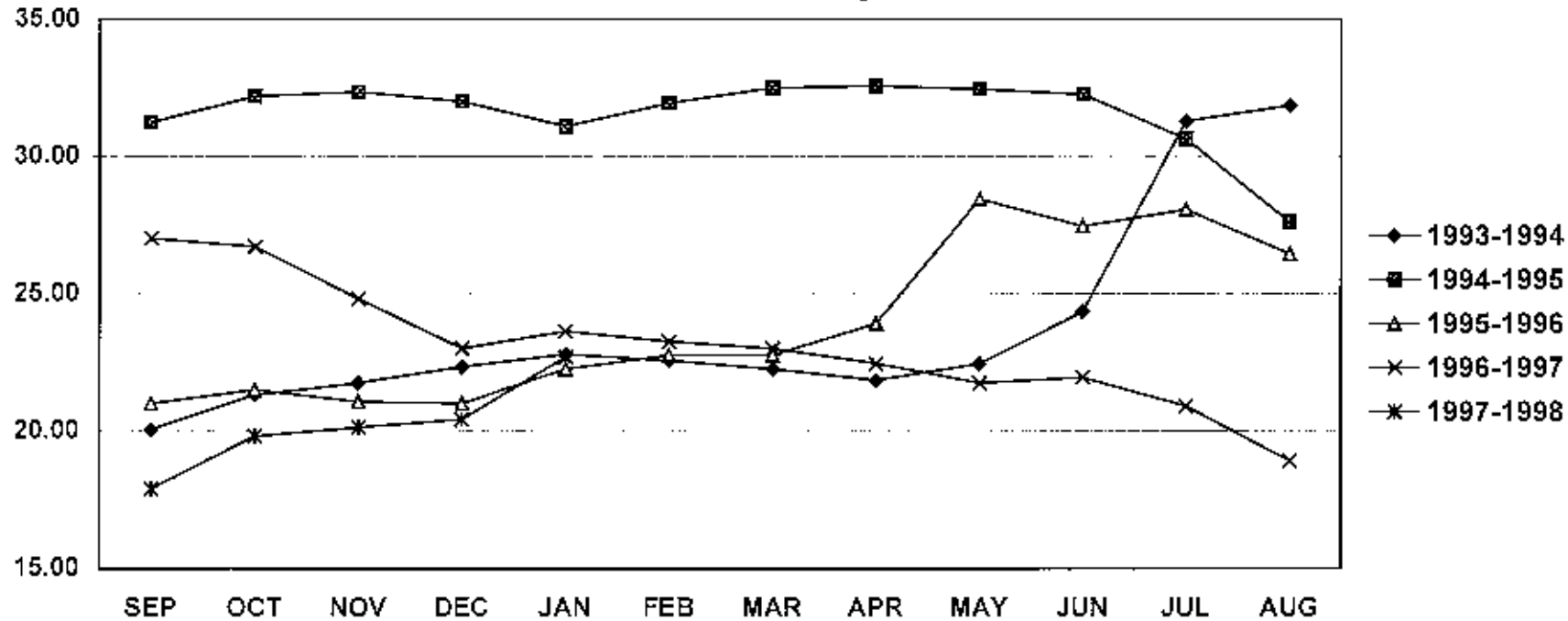
Pintos - North Dakota/Minnesota



**Dealer Monthly Average Price
Per Cwt By Crop Year Fob
PEA BEANS - MICHIGAN No. 1's**

	SEP	OCT	NOV	DEC	JAN	FEB	MAR	APR	MAY	JUN	JUL	AUG	AVG
1993-1994	20.06	21.31	21.75	22.33	22.78	22.56	22.25	21.84	22.44	24.33	31.28	31.85	23.73
1994-1995	31.25	32.19	32.35	32.00	31.10	31.94	32.50	32.56	32.45	32.25	30.63	27.60	31.57
1995-1996	21.00	21.50	21.06	21.00	22.25	22.75	22.75	23.90	28.44	27.44	28.05	26.44	23.88
1996-1997	27.00	26.70	24.81	23.00	23.63	23.25	23.00	22.45	21.75	21.94	20.90	18.91	23.11
1997-1998	17.90	19.81	20.13	20.42	22.67	NE	NE	NE	NE	24.00	NE	NE	20.82

Pea Beans - Michigan No. 1's



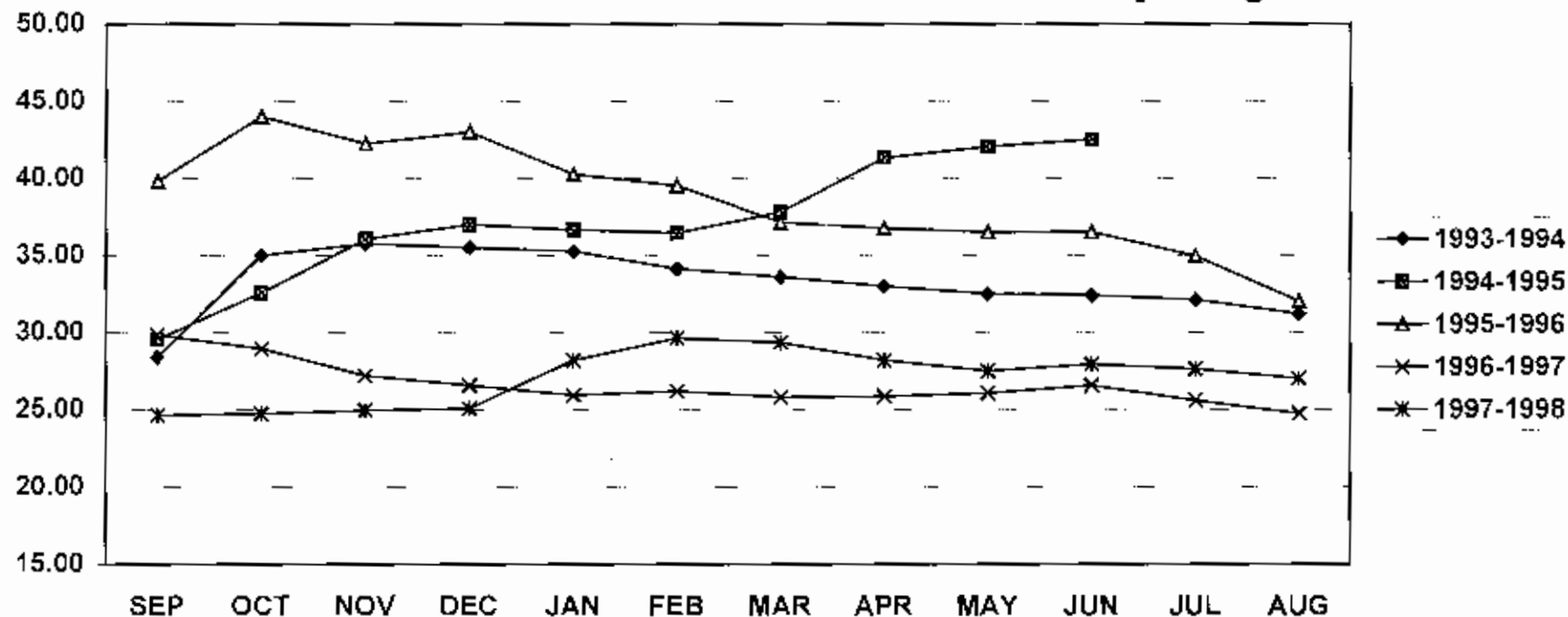
Dealer Monthly Average Price

Per Cwt By Crop Year Fob

GREAT NORTHERNS - WESTERN NEBRASKA/EASTERN WYOMING

	SEP	OCT	NOV	DEC	JAN	FEB	MAR	APR	MAY	JUN	JUL	AUG	AVG
1993-1994	28.42	35.00	35.75	35.50	35.25	34.13	33.60	33.00	32.50	32.40	32.13	31.20	33.24
1994-1995	29.56	32.56	36.05	37.00	36.65	36.44	37.78	41.31	42.05	42.50	NE	NE	37.19
1995-1996	39.81	44.00	42.25	43.00	40.25	39.50	37.13	36.75	36.50	36.50	34.95	32.00	38.55
1996-1997	29.84	28.95	27.19	26.58	25.94	26.19	25.81	25.85	26.06	26.56	25.60	24.75	26.61
1997-1998	24.63	24.75	24.94	25.08	28.19	29.63	29.35	28.19	27.50	27.93	27.63	27.00	27.07

Great Northerns - Western Nebraska/Eastern Wyoming



Dealer Monthly Average Price

Per Cwt By Crop Year Fob

	SEP	OCT	NOV	DEC	JAN	FEB	MAR	APR	MAY	JUN	JUL	AUG	AVG
PINTO - Northern Colorado													
1993-1994	28.81	37.00	36.50	35.17	35.50	35.31	33.75	32.56	33.19	33.30	30.88	27.35	33.28
1994-1995	22.00	21.94	21.75	21.33	20.05	19.81	21.75	20.75	21.10	21.94	21.88	21.70	21.33
1995-1996	21.56	22.40	21.00	20.67	20.70	22.00	22.75	27.45	33.75	33.44	32.25	30.88	25.74
1996-1997	31.38	30.70	29.69	28.83	28.50	27.50	26.38	26.05	26.38	26.38	25.10	23.88	27.56
1997-1998	21.20	21.94	23.75	25.08	29.31	29.19	28.55	27.63	27.94	29.00	28.13	26.00	26.48
PINTO - North Dakota/Minnesota													
1993-1994	25.88	35.13	34.45	32.83	33.69	33.63	32.06	30.44	31.00	31.68	28.25	24.65	31.14
1994-1995	19.75	19.44	19.00	18.08	17.00	18.19	20.05	19.47	19.73	20.31	20.25	19.85	19.26
1995-1996	18.66	19.43	18.06	18.00	18.30	19.59	20.88	25.10	30.69	29.88	28.98	27.50	22.92
1996-1997	27.56	26.90	25.56	24.83	24.13	23.00	21.50	21.60	22.50	22.63	21.60	19.94	23.48
1997-1998	17.28	18.44	16.50	23.67	28.56	28.09	26.65	24.50	25.00	26.45	24.94	21.56	23.47
PINTO - Idaho													
1993-1994	27.75	36.69	36.88	35.67	35.75	35.50	34.13	33.00	34.06	34.33	31.56	27.40	33.56
1994-1995	22.69	23.00	22.55	21.83	20.95	20.81	22.25	21.63	21.95	22.31	22.63	22.60	22.10
1995-1996	21.69	22.90	22.25	21.83	21.75	22.63	23.25	27.45	34.13	33.94	33.30	31.50	26.39
1996-1997	31.75	31.40	30.50	30.00	29.06	29.13	28.56	27.85	27.94	28.44	28.30	26.88	29.15
1997-1998	24.50	24.08	25.00	26.08	30.00	30.63	29.45	27.75	27.88	29.80	28.63	26.50	27.53
GREAT NORTHERN - Western Nebraska/Eastern Wyoming													
1993-1994	28.42	35.00	35.75	35.50	35.25	34.13	33.60	33.00	32.50	32.40	32.13	31.20	33.24
1994-1995	29.56	32.56	36.05	37.00	36.65	36.44	37.78	41.31	42.05	42.50	NE	NE	37.19
1995-1996	39.81	44.00	42.25	43.00	40.25	39.50	37.13	36.75	36.50	36.50	34.95	32.00	38.55
1996-1997	29.84	28.95	27.19	26.58	25.94	26.19	25.81	25.85	26.06	26.56	25.60	24.75	26.61
1997-1998	24.63	24.75	24.94	25.08	28.19	29.63	29.35	28.19	27.50	27.93	27.63	27.00	27.07
SMALL RED - Southern Idaho													
1993-1994	29.50	31.13	31.42	31.17	30.63	30.50	29.20	28.13	27.25	27.25	27.69	28.10	29.33
1994-1995	28.83	29.00	29.40	29.17	28.85	28.25	27.63	27.75	27.50	27.44	27.25	27.20	28.19
1995-1996	26.94	26.55	26.63	26.50	27.00	26.75	26.44	28.25	31.50	32.50	33.40	34.00	28.87
1996-1997	34.63	36.60	38.44	38.75	40.38	40.19	40.19	40.35	40.44	40.63	40.95	40.13	39.31
1997-1998	30.00	28.50	28.31	28.25	28.38	28.75	28.25	27.63	27.69	27.80	27.31	27.09	28.16
PINK - Southern Idaho													
1993-1994	26.83	30.17	31.30	31.00	30.42	30.00	28.05	27.06	26.94	27.10	26.69	26.81	28.53
1994-1995	26.25	26.50	26.65	26.33	26.50	26.19	26.00	26.08	26.20	26.33	25.75	26.00	26.23
1995-1996	24.88	25.80	25.75	25.75	25.95	25.88	25.88	28.20	31.50	32.25	32.95	33.50	28.19
1996-1997	33.75	33.50	33.63	33.25	32.94	32.50	31.88	30.95	30.92	30.56	30.10	30.25	32.02
1997-1998	28.30	28.13	28.31	28.50	29.13	29.50	28.90	28.56	28.50	28.75	28.81	29.00	28.70

NE=Not Established

Grower Monthly Average Price Per Cwt By Crop Year Fob

	SEP	OCT	NOV	DEC	JAN	FEB	MAR	APR	MAY	JUN	JUL	AUG	AVG
PINTO - Northern Colorado													
1993-1994	22.75	29.00	29.50	29.00	29.63	30.00	28.20	28.00	28.13	27.75	23.00	20.70	27.14
1994-1995	16.38	17.00	17.00	16.00	15.10	15.00	15.75	16.00	16.60	17.00	16.75	15.90	16.21
1995-1996	16.25	16.60	15.00	15.00	15.20	16.50	18.00	21.80	26.88	27.00	25.80	24.75	19.90
1996-1997	24.75	22.80	22.50	21.33	20.25	20.00	19.25	18.50	18.75	19.38	18.40	17.50	20.28
1997-1998	15.50	15.25	17.38	19.00	21.50	22.38	21.80	21.00	20.50	21.00	21.00	19.75	19.67
PINTO - North Dakota/Minnesota													
1993-1994	21.00	28.25	28.00	27.00	27.75	29.00	27.00	NQ	27.75	27.25	21.00	19.40	25.76
1994-1995	15.38	15.38	15.05	13.83	13.30	14.31	15.50	15.63	15.90	16.00	15.88	15.80	15.16
1995-1996	14.13	15.10	14.00	14.00	14.10	15.38	16.44	20.00	24.88	25.00	25.00	24.63	18.56
1996-1997	22.88	22.20	20.50	20.33	19.25	18.50	17.88	16.50	17.25	17.63	17.30	16.00	18.85
1997-1998	13.30	13.81	16.25	18.00	21.50	21.88	20.60	20.44	20.25	21.20	20.63	18.25	18.84
PINTO - Idaho													
1993-1994	21.75	28.50	29.30	29.00	29.50	30.00	28.00	28.00	28.00	28.25	22.00	21.20	26.96
1994-1995	18.00	18.00	18.00	17.00	16.00	16.00	16.88	16.88	17.00	17.50	18.00	18.00	17.27
1995-1996	17.13	17.00	16.50	16.00	16.20	17.50	18.50	22.00	26.75	27.00	27.00	25.00	20.55
1996-1997	25.00	25.20	23.00	22.83	23.00	23.00	21.13	20.50	20.50	21.00	20.60	19.75	22.13
1997-1998	17.80	18.00	18.63	20.00	22.50	23.75	22.80	22.13	22.00	22.60	21.50	21.00	21.06
GREAT NORTHERN - Western Nebraska/Eastern Wyoming													
1993-1994	18.50	20.50	22.00	22.00	22.63	23.00	23.00	23.00	23.00	23.00	23.25	22.60	22.21
1994-1995	20.88	23.00	25.80	26.83	27.00	27.00	27.25	30.00	30.00	30.00	30.00	30.00	27.31
1995-1996	27.75	30.00	29.00	29.00	29.00	29.00	26.00	25.70	26.00	26.00	24.80	24.00	27.19
1996-1997	22.75	19.60	18.88	18.17	17.13	17.00	18.00	18.40	18.00	18.25	18.20	17.50	18.49
1997-1998	17.00	17.00	17.00	17.00	18.50	19.13	20.00	20.00	20.63	20.00	20.00	20.00	18.86
SMALL RED - Southern Idaho													
1993-1994	22.20	23.00	23.00	23.00	23.00	22.25	22.00	22.00	22.00	22.00	22.25	23.00	22.48
1994-1995	21.00	21.38	22.00	22.00	21.80	21.50	21.63	21.50	21.20	21.00	21.50	21.50	21.50
1995-1996	19.63	19.90	19.75	19.50	19.40	19.38	19.75	20.30	22.88	24.63	25.00	25.00	21.26
1996-1997	25.50	26.00	26.38	27.50	28.00	29.50	30.50	29.40	30.00	30.25	30.40	30.00	28.62
1997-1998	20.20	21.00	20.75	21.00	21.00	21.25	21.30	21.00	21.00	21.00	21.00	21.00	20.96
PINK - Southern Idaho													
1993-1994	19.75	22.00	22.00	22.17	22.25	21.88	19.00	19.00	19.00	19.00	19.00	19.00	20.34
1994-1995	19.00	19.00	19.00	18.17	18.00	18.00	18.00	18.13	18.20	18.00	18.00	18.00	18.29
1995-1996	18.00	18.00	18.00	18.00	18.00	18.38	18.75	20.10	22.88	23.88	24.00	24.25	20.19
1996-1997	25.33	25.60	26.00	26.00	26.00	26.00	26.00	25.10	25.00	25.13	24.50	24.25	25.41
1997-1998	20.50	21.00	21.00	21.00	22.00	22.25	22.00	22.00	22.00	22.00	22.00	NE	21.61

Dealer Monthly Average Price

Per Cwt By Crop Year Fob

	SEP	OCT	NOV	DEC	JAN	FEB	MAR	APR	MAY	JUN	JUL	AUG	AVG
BLACK - Michigan													
1993-1994	22.25	24.24	27.45	27.00	26.33	25.00	24.60	25.31	31.75	33.28	34.13	34.25	27.97
1994-1995	27.31	33.25	34.03	33.75	33.70	33.97	34.25	33.50	33.10	32.88	32.00	29.30	32.59
1995-1996	20.25	20.20	19.19	19.00	18.55	19.00	20.13	22.45	29.88	28.81	28.85	28.00	22.86
1996-1997	27.50	27.05	26.81	26.50	26.81	28.25	28.19	28.25	28.50	28.06	25.85	23.19	27.08
1997-1998	20.55	22.63	27.94	31.83	38.63	38.88	35.15	35.50	38.00	42.75	NE	NE	33.19
BLACK - New York													
1993-1994	22.08	24.63	26.70	26.50	26.00	24.63	25.25	25.00	30.75	33.00	34.50	NA	27.19
1994-1995	27.75	32.00	33.15	33.58	32.80	32.75	33.69	33.13	32.90	33.00	32.50	30.20	32.29
1995-1996	20.88	20.65	20.50	20.50	19.70	20.00	20.25	22.65	29.56	28.45	28.85	27.94	23.33
1996-1997	27.50	27.35	27.13	28.92	27.31	27.72	27.94	27.75	27.88	27.88	26.63	24.17	27.18
1997-1998	20.92	22.38	27.25	31.25	37.17	38.50	35.00	35.00	35.00	41.13	NE	NE	32.36
CRANBERRY - Michigan													
1993-1994	29.04	32.81	30.95	30.63	28.50	27.42	25.75	25.92	27.44	31.50	35.00	34.83	29.98
1994-1995	35.38	34.44	34.48	34.83	34.75	34.69	34.50	34.38	34.40	34.50	34.50	34.50	34.61
1995-1996	30.00	29.50	29.81	29.92	29.88	29.56	29.38	29.50	30.75	31.38	31.50	NA	30.11
1996-1997	38.88	39.30	38.13	36.58	34.59	33.19	32.25	31.50	30.38	29.50	27.90	27.88	33.34
1997-1998	27.50	26.13	25.44	25.58	26.81	29.25	29.50	28.63	28.75	29.50	30.00	33.50	28.38
LIGHT RED KIDNEY - Michigan													
1993-1994	28.33	30.25	31.20	31.00	31.50	30.83	31.05	30.50	30.83	30.63	30.75	30.00	30.57
1994-1995	29.50	28.84	28.80	28.92	28.50	28.94	29.06	29.00	28.40	28.50	28.00	28.80	28.77
1995-1996	27.63	27.70	27.88	27.33	27.00	27.00	27.19	27.50	29.56	32.25	33.70	33.50	29.02
1996-1997	36.00	39.00	39.00	39.00	39.13	39.44	39.13	38.80	37.38	36.75	35.70	33.83	37.76
1997-1998	26.00	26.06	26.50	26.50	28.06	29.38	29.80	29.88	30.50	29.60	29.50	29.50	28.44
LIGHT RED KIDNEY - New York													
1993-1994	28.17	29.88	30.60	30.50	31.00	30.33	30.50	30.25	29.25	28.25	NA	NA	29.87
1994-1995	28.00	28.17	27.40	27.75	27.75	27.31	27.00	27.00	27.00	27.13	27.25	28.00	27.48
1995-1996	27.50	27.50	27.38	27.46	27.50	27.06	26.25	27.15	29.63	32.25	33.45	33.88	28.92
1996-1997	36.88	39.00	39.22	39.33	39.38	39.50	39.25	38.35	36.81	36.94	34.30	32.56	37.63
1997-1998	25.69	25.75	25.88	26.25	27.25	29.44	30.30	30.50	30.50	29.45	NE	30.00	28.27
LIGHT RED KIDNEY - Colorado													
1993-1994	30.17	33.17	34.00	33.50	34.50	34.50	34.10	34.00	34.06	34.25	34.18	31.81	33.52
1994-1995	29.88	30.44	29.80	29.75	29.20	29.50	29.25	28.63	28.95	28.50	28.75	29.00	29.30
1995-1996	28.38	28.95	28.75	28.92	28.55	28.13	27.75	29.35	31.88	33.00	33.55	33.88	30.09
1996-1997	37.00	39.40	39.94	40.08	40.00	40.00	40.00	40.00	38.50	37.88	36.90	35.69	38.78
1997-1998	26.65	26.94	27.50	27.50	28.75	29.50	28.90	28.13	28.00	28.80	28.75	29.75	28.26

NA=Not Available

Grower Monthly Average Price Per Cwt By Crop Year Fob

	SEP	OCT	NOV	DEC	JAN	FEB	MAR	APR	MAY	JUN	JUL	AUG	AVG
BLACK - Michigan													
1993-1994	16.25	18.75	21.50	22.00	22.00	21.75	21.00	21.13	23.50	24.00	24.00	NA	21.44
1994-1995	22.00	29.13	29.30	29.50	29.80	30.00	30.00	30.00	30.00	30.00	29.50	29.00	29.02
1995-1996	15.38	15.30	14.63	13.83	13.40	13.88	14.00	15.70	22.63	21.88	23.60	23.25	17.29
1996-1997	23.38	22.90	22.50	22.50	21.25	22.36	22.88	22.90	22.50	22.50	20.70	19.50	22.16
1997-1998	15.00	16.81	19.00	22.17	27.75	29.00	28.00	28.00	28.00	26.25	BI	24.00	16.94
BLACK - New York													
1993-1994	15.25	16.00	17.00	18.00	18.00	17.50	17.00	17.00	18.50	19.67	NA	NA	17.39
1994-1995	18.88	21.63	22.50	23.00	23.80	24.50	24.00	24.00	24.50	24.00	24.00	24.00	23.23
1995-1996	16.00	15.80	15.13	15.00	14.10	14.00	14.00	15.10	19.75	20.00	20.20	20.50	16.63
1996-1997	20.75	20.90	20.13	20.00	20.00	20.00	20.00	20.00	20.38	21.50	20.75	NE	20.40
1997-1998	15.00	15.38	17.38	20.00	NE	25.75	NE	BI	BI	BI	BI	BI	18.70
CRANBERRY - Michigan													
1993-1994	21.50	25.00	24.20	24.25	NA	22.00	NA	NA	22.83	NA	NA	NA	23.30
1994-1995	28.88	28.88	28.60	29.00	29.00	29.00	29.00	29.00	29.00	28.50	28.00	28.00	28.74
1995-1996	24.25	23.60	24.00	24.00	24.00	24.00	23.75	24.00	24.38	24.00	24.00	NA	24.00
1996-1997	32.81	33.30	31.13	29.33	29.00	27.38	25.63	25.50	24.75	24.75	24.00	NE	27.96
1997-1998	21.90	19.75	18.63	NE	19.75	21.33	22.00	22.00	NE	NE	NE	NE	20.77
LIGHT RED KIDNEY - Michigan													
1993-1994	21.75	23.75	24.20	24.50	24.13	23.50	23.60	24.00	24.00	NA	NA	NA	23.71
1994-1995	23.88	23.75	23.40	23.50	23.50	23.50	23.25	23.00	23.40	23.63	22.50	22.30	23.30
1995-1996	22.25	22.60	22.38	22.00	21.70	21.50	21.50	22.10	22.25	22.50	23.00	23.00	22.23
1996-1997	29.63	32.50	31.25	32.17	32.00	32.13	31.13	31.00	31.50	31.50	NE	NE	31.48
1997-1998	20.00	20.00	19.50	19.50	20.88	21.25	21.80	22.00	22.00	22.00	22.00	22.38	21.11
LIGHT RED KIDNEY - New York													
1993-1994	20.25	21.00	21.00	21.00	21.00	21.00	21.00	21.00	21.00	21.00	NA	NA	20.93
1994-1995	21.13	19.50	18.20	18.00	18.00	18.25	18.00	18.00	18.00	18.00	22.00	22.00	19.09
1995-1996	20.50	20.50	20.25	20.00	19.70	19.00	19.00	19.40	20.88	21.00	21.60	22.25	20.34
1996-1997	28.25	31.00	31.38	31.00	31.00	31.13	31.50	31.40	31.00	30.00	NE	NE	30.77
1997-1998	20.00	19.25	19.25	19.50	20.00	21.00	21.00	BI	BI	24.00	BI	BI	20.50
LIGHT RED KIDNEY - Colorado													
1993-1994	23.17	24.13	25.50	26.00	26.00	26.00	26.00	26.00	26.00	26.00	BI	BI	25.48
1994-1995	24.00	23.13	23.00	23.00	23.00	23.38	22.63	22.50	21.70	21.50	21.63	22.00	22.62
1995-1996	22.63	22.80	22.00	21.33	20.00	20.38	20.50	23.05	25.75	26.00	26.00	26.00	23.04
1996-1997	29.63	31.70	32.00	32.00	31.88	31.75	32.00	32.00	31.88	29.00	28.00	NE	31.08
1997-1998	19.60	19.50	20.25	20.00	20.75	21.38	22.30	22.50	22.50	22.50	22.50	22.50	21.36

NA=Not Available NE=Not Established BI=Bought-In

Dealer Monthly Average Price
Per Cwt By Crop Year Fob

	SEP	OCT	NOV	DEC	JAN	FEB	MAR	APR	MAY	JUN	JUL	AUG	AVG
SMALL WHITE - Idaho/Washington													
1993-1994	26.00	29.50	29.06	29.33	29.31	29.00	28.75	27.00	25.50	27.00	31.42	32.75	28.72
1994-1995	32.75	33.19	34.44	34.50	34.80	35.38	35.13	34.92	35.50	35.13	34.38	33.00	34.43
1995-1996	28.00	NE	28.00	28.00	29.00	NE	NE	NE	31.50	NE	NE	NE	28.90
1996-1997	NE	36.92	38.75	NE	40.25	NE	NE	NE	NE	NE	40.00	37.25	38.63
1997-1998	29.25	28.88	28.88	28.00	29.00	29.38	29.05	29.13	28.13	28.23	28.50	28.31	28.73
PEA BEAN - Michigan No 1's													
1993-1994	20.06	21.31	21.75	22.33	22.78	22.56	22.25	21.84	22.44	24.33	31.28	31.85	23.73
1994-1995	31.25	32.19	32.35	32.00	31.10	31.94	32.50	32.56	32.45	32.25	30.63	27.60	31.57
1995-1996	21.00	21.50	21.06	21.00	22.25	22.75	22.75	23.90	28.44	27.44	28.05	26.44	23.88
1996-1997	27.00	26.70	24.81	23.00	23.63	23.25	23.00	22.45	21.75	21.94	20.90	18.91	23.11
1997-1998	17.90	19.81	20.13	20.42	22.67	NE	NE	NE	NE	24.00	NE	NE	20.82
PEA BEAN - North Dakota/Minnesota													
1993-1994	18.25	20.13	20.38	20.75	21.63	21.94	21.00	21.31	20.04	22.67	27.25	NE	21.40
1994-1995	30.25	31.25	31.15	30.92	30.30	30.56	31.13	31.19	31.36	31.50	29.75	28.50	30.66
1995-1996	19.88	19.85	19.09	18.33	20.70	21.44	21.83	23.10	27.81	26.44	26.95	25.50	22.56
1996-1997	26.31	25.30	22.88	21.67	22.00	23.55	21.06	20.55	20.03	19.94	18.95	17.69	21.66
1997-1998	15.75	15.63	16.50	17.50	21.06	20.00	NE	16.88	17.59	20.75	21.25	21.25	18.56
DARK RED KIDNEY - Michigan													
1993-1994	36.33	38.94	39.55	38.25	37.75	36.63	35.84	34.94	33.75	33.65	32.81	30.67	35.76
1994-1995	25.81	26.47	26.95	26.67	25.60	25.56	25.88	25.63	26.65	27.75	29.38	30.63	26.92
1995-1996	30.81	32.00	32.00	31.50	30.80	30.00	30.13	31.05	33.75	34.13	33.75	35.06	32.08
1996-1997	36.50	36.20	34.56	33.50	33.00	32.63	31.38	29.20	27.75	27.00	27.80	26.69	31.35
1997-1998	25.75	26.00	27.75	28.17	28.63	29.44	29.45	29.94	29.50	29.70	22.50	32.50	28.28
DARK RED KIDNEY - Minnesota/Wisconsin													
1993-1994	36.25	40.25	40.25	38.17	38.00	37.17	35.96	33.63	33.50	33.45	32.44	27.33	35.53
1994-1995	25.81	26.34	26.60	26.08	26.00	26.00	26.06	27.00	28.00	29.25	29.75	30.75	27.30
1995-1996	31.00	33.50	32.75	32.25	32.25	32.00	NE	NE	36.00	36.50	35.90	36.00	33.82
1996-1997	36.00	36.25	34.83	34.50	33.06	31.92	30.00	28.13	25.75	NE	26.80	26.19	31.22
1997-1998	25.30	25.38	27.69	28.42	28.88	28.56	29.54	29.50	29.81	29.10	30.38	32.81	28.78

NE=Not Established

**Grower Monthly Average Price
Per Cwt By Crop Year Fob**

	SEP	OCT	NOV	DEC	JAN	FEB	MAR	APR	MAY	JUN	JUL	AUG	AVG
SMALL WHITE - Idaho/Washington													
1993-1994	20.38	21.25	21.10	21.00	21.00	21.00	21.50	21.13	21.00	21.00	23.50	25.50	21.61
1994-1995	27.00	27.25	26.45	26.50	26.50	26.50	26.50	27.63	26.80	28.38	26.63	24.75	26.74
1995-1996	23.00	23.00	23.00	23.00	23.10	23.25	23.50	24.20	24.88	25.25	26.70	27.50	24.20
1996-1997	26.67	27.40	28.25	28.67	28.88	30.13	30.00	29.40	29.25	29.50	29.75	NE	28.90
1997-1998	21.50	20.38	20.50	20.50	20.63	21.00	20.70	20.67	20.25	20.60	20.88	20.75	20.70
PEA BEAN - Michigan No 1's													
1993-1994	15.75	16.44	17.35	18.17	18.75	18.44	18.30	18.50	18.63	19.80	25.38	27.60	19.43
1994-1995	27.56	29.50	29.65	29.83	29.15	28.25	29.00	29.25	29.25	29.13	27.38	23.30	28.44
1995-1996	15.69	16.55	17.00	17.00	17.80	17.75	18.00	18.80	21.88	21.88	24.00	23.25	19.22
1996-1997	23.50	22.70	20.38	18.83	18.63	18.63	18.13	16.70	16.50	16.50	15.70	14.25	18.37
1997-1998	12.75	12.69	12.56	12.50	13.69	14.19	14.05	14.00	14.13	15.10	15.50	15.83	13.92
PEA BEAN - North Dakota/Minnesota													
1993-1994	14.50	15.06	16.40	16.50	16.81	17.00	17.00	17.00	17.25	18.10	NE	26.00	17.42
1994-1995	25.50	27.25	27.55	27.75	27.25	26.50	27.44	27.75	27.75	27.50	25.88	24.00	26.84
1995-1996	14.88	14.70	14.50	15.00	15.80	17.25	18.00	18.80	21.75	21.50	22.50	22.50	18.10
1996-1997	22.31	20.70	18.88	17.50	17.50	17.50	17.13	15.50	15.50	15.13	14.25	13.42	17.11
1997-1998	11.95	11.56	11.50	11.50	13.50	13.69	13.30	13.13	13.00	14.30	14.50	14.50	13.04
DARK RED KIDNEY - Michigan													
1993-1994	30.25	31.25	32.00	31.17	30.75	30.00	NE	28.67	NE	27.63	NE	NE	30.22
1994-1995	20.75	21.13	20.80	20.50	19.70	19.00	18.50	18.88	19.50	19.75	20.63	22.00	20.10
1995-1996	25.13	26.10	26.25	25.50	25.00	25.00	25.00	25.00	25.00	25.50	26.80	27.50	25.65
1996-1997	28.63	28.90	29.38	29.00	28.13	25.88	25.50	24.40	23.63	21.00	NE	NE	26.45
1997-1998	NE	20.25	20.00	20.33	21.38	21.25	22.80	23.00	22.50	22.50	22.50	23.17	21.79
DARK RED KIDNEY - Minnesota/Wisconsin													
1993-1994	31.00	33.12	34.30	34.00	31.50	30.00	W	W	28.00	27.75	NE	NE	31.21
1994-1995	20.50	19.88	19.50	19.50	19.40	19.19	19.19	18.88	19.40	21.38	22.00	22.50	20.11
1995-1996	26.56	27.85	26.88	26.50	26.25	26.38	26.44	26.60	28.38	29.75	30.00	30.25	27.65
1996-1997	31.00	29.70	29.25	29.67	28.13	25.38	25.50	22.67	20.25	20.67	20.60	NE	25.71
1997-1998	19.00	19.75	21.00	21.50	21.13	21.75	22.00	22.00	22.38	22.00	22.19	25.31	21.67

NE=Not Established W=Withdrawn

**Dealer Monthly Average Price
Per Cwt By Crop Year Fob**

	SEP	OCT	NOV	DEC	JAN	FEB	MAR	APR	MAY	JUN	JUL	AUG	AVG
Austrian Winter Pea - Idaho/Washington													
1993-1994	11.50	11.25	11.33	11.33	11.13	11.38	N.E.	N.E.	N.E.	13.25	N.E.	17.50	12.33
1994-1995	16.75	16.13	16.00	16.08	16.00	16.21	N.E.	16.29	16.13	16.22	16.25	16.25	16.21
1995-1996	16.28	16.25	16.13	16.25	16.25	16.25	16.28	16.25	16.69	17.44	17.34	17.50	16.58
1996-1997	17.83	18.56	17.78	17.50	17.63	17.92	17.97	18.45	18.75	18.69	17.75	17.50	18.03
1997-1998	16.88	16.78	16.66	16.25	16.33	16.53	16.18	16.00	16.50	NE	NE	14.50	16.26
Lentil - Idaho/Washington													
1993-1994	20.81	20.00	20.58	20.25	18.68	18.92	18.88	17.50	17.15	16.78	16.31	16.73	18.55
1994-1995	16.16	16.73	16.31	16.38	16.60	16.28	16.28	16.53	16.70	16.70	18.88	19.97	16.96
1995-1996	19.66	18.78	18.88	18.67	18.60	18.41	18.25	18.35	20.22	22.13	22.85	23.50	19.86
1996-1997	23.03	20.88	21.28	20.71	20.31	19.25	20.50	19.95	19.50	19.31	19.15	18.47	20.20
1997-1998	17.00	16.22	15.63	15.13	14.88	15.19	14.87	14.44	14.19	14.88	15.22	14.69	15.20
Green Split Pea - Idaho/Washington													
1993-1994	13.34	13.06	12.78	12.67	12.48	12.28	12.38	12.31	12.48	12.59	12.81	13.16	12.70
1994-1995	13.31	14.53	16.38	17.04	18.40	19.50	20.44	20.63	20.60	20.56	18.13	15.06	17.88
1995-1996	15.06	14.85	14.81	14.67	14.28	14.44	14.91	15.20	15.69	16.88	17.63	18.41	15.57
1996-1997	18.65	18.00	17.47	17.29	17.66	19.27	20.59	20.15	19.25	18.44	16.55	13.41	18.06
1997-1998	13.48	13.53	13.50	13.29	13.09	13.09	12.83	12.66	12.59	12.68	12.56	12.22	12.96
Whole Green Pea - Idaho/Washington													
1993-1994	10.02	9.75	9.50	9.54	9.25	9.22	9.31	9.35	9.63	10.09	10.38	10.80	9.74
1994-1995	10.92	12.05	13.53	14.54	15.53	16.63	17.31	17.63	17.80	17.23	15.30	12.41	15.07
1995-1996	12.16	11.78	11.66	11.42	11.35	11.72	12.41	12.58	12.81	13.88	14.45	15.63	12.65
1996-1997	15.60	14.69	14.38	14.04	14.47	16.46	17.50	16.98	16.44	15.19	13.50	10.72	15.00
1997-1998	10.58	11.00	11.06	10.92	10.84	10.81	10.55	10.63	10.47	10.65	10.44	10.00	10.66
Yellow Split Pea - Idaho/Washington													
1993-1994	11.94	11.78	12.08	12.46	12.33	12.19	12.38	N.E.	9.25	11.56	11.25	11.10	11.67
1994-1995	10.88	12.10	13.03	13.50	13.50	13.31	13.31	13.56	14.25	14.59	12.75	12.69	13.12
1995-1996	12.47	12.50	12.69	12.58	12.50	13.41	12.75	12.75	12.81	13.75	14.69	15.00	13.16
1996-1997	15.40	14.69	14.38	13.96	14.47	16.46	17.25	16.40	15.78	14.69	13.15	10.56	14.77
1997-1998	13.33	13.47	13.31	13.25	13.00	13.00	12.85	12.66	12.44	12.63	12.44	12.08	12.87
Whole Yellow Pea - Idaho/Washington													
1993-1994	15.19	15.31	15.43	15.50	15.48	15.47	15.47	15.13	15.08	14.91	14.66	14.33	15.16
1994-1995	14.25	14.70	15.94	15.96	16.15	15.94	16.31	16.38	16.90	17.31	16.66	15.69	16.02
1995-1996	15.56	15.75	15.75	15.75	15.55	15.44	15.59	15.75	15.88	16.88	17.60	18.00	16.13
1996-1997	18.33	17.88	17.44	17.29	17.66	19.19	20.25	19.00	18.69	17.88	17.00	13.38	17.83
1997-1998	10.45	10.69	10.84	10.75	10.75	10.75	10.54	10.75	10.46	10.45	10.25	10.08	10.56

**Grower Monthly Average Price
Per Cwt By Crop Year Fob**

	SEP	OCT	NOV	DEC	JAN	FEB	MAR	APR	MAY	JUN	JUL	AUG	AVG
Austrian Winter Pea - Idaho/Washington													
1993-1994	8.81	8.69	8.73	8.75	8.75	8.97	9.75	10.00	10.00	10.00	10.00	10.40	9.40
1994-1995	12.00	12.00	12.00	12.00	12.00	12.00	12.00	12.00	12.00	12.00	12.20	12.25	12.04
1995-1996	12.13	12.10	12.25	12.08	12.00	12.00	12.00	12.00	12.00	12.00	12.10	13.00	12.14
1996-1997	13.00	13.00	12.88	12.83	13.00	13.00	13.19	13.50	NE	NE	13.00	12.56	13.00
1997-1998	12.38	12.25	12.19	12.25	12.06	12.00	12.00	11.00	NE	NE	NE	NE	12.02
Lentil - Idaho/Washington													
1993-1994	17.50	16.56	16.35	15.17	14.88	15.25	15.44	14.50	13.85	13.38	13.00	13.33	14.93
1994-1995	12.88	13.65	13.38	13.33	13.30	13.22	13.31	13.56	13.83	13.56	15.60	16.81	13.87
1995-1996	16.66	15.78	15.75	15.71	15.50	15.41	15.44	15.68	16.91	18.88	19.80	20.59	16.84
1996-1997	19.75	18.81	18.25	17.33	17.13	17.38	17.31	17.15	16.67	16.25	15.80	14.91	17.23
1997-1998	13.65	12.81	12.28	11.50	11.41	11.81	11.58	10.91	10.81	11.20	12.03	11.31	11.78
Whole Green Pea - Idaho/Washington													
1993-1994	7.03	6.97	6.88	6.67	6.48	6.63	6.97	7.06	7.28	7.69	7.97	8.25	7.16
1994-1995	8.28	8.98	10.16	11.33	12.13	12.75	13.38	13.44	13.40	13.00	9.43	9.28	11.30
1995-1996	8.91	8.40	8.31	8.25	8.45	9.00	9.56	9.78	10.03	10.91	11.55	12.50	9.64
1996-1997	12.20	11.19	10.97	11.00	11.44	12.58	14.38	13.80	13.42	11.88	8.70	7.66	11.60
1997-1998	7.73	7.84	8.09	8.00	8.00	8.00	8.10	7.91	7.75	7.85	7.72	6.84	7.82
Whole Yellow Pea - Idaho/Washington													
1993-1994	8.47	8.66	8.73	8.75	8.73	8.75	8.63	8.50	8.30	8.25	8.13	8.10	8.50
1994-1995	8.25	8.85	9.56	9.88	9.75	9.66	9.63	9.66	9.85	9.63	9.48	9.59	9.48
1995-1996	9.22	8.78	8.91	8.75	8.58	8.81	9.00	9.23	9.53	10.41	11.15	12.06	9.54
1996-1997	12.18	11.00	10.91	11.00	11.44	12.58	13.63	12.65	11.42	10.38	8.25	7.56	11.08
1997-1998	7.60	7.63	7.75	7.75	7.56	7.75	7.65	7.50	7.50	7.43	7.00	6.34	7.46

Dealer Monthly Average Price

Per Cwt By Crop Year Fob

	SEP	OCT	NOV	DEC	JAN	FEB	MAR	APR	MAY	JUN	JUL	AUG	AVG
Light Red Kidney - California													
1993-1994	32.25	NA	34.63	33.83	34.00	33.83	32.44	34.00	32.81	33.03	32.63	31.50	33.18
1994-1995	31.33	31.19	32.20	31.50	31.80	31.75	30.92	30.75	30.50	30.31	30.16	30.05	31.04
1995-1996	29.66	30.00	30.00	30.00	29.75	29.75	29.69	31.75	32.78	35.50	NE	35.00	31.26
1996-1997	35.00	39.33	40.75	42.75	42.00	42.00	42.00	41.05	40.56	39.83	38.00	37.58	40.07
1997-1998	NE	31.00	30.00	30.00	30.00	30.25	31.60	30.75	31.00	31.70	32.00	32.00	30.94
Baby Lima - California													
1993-1994	29.75	33.19	36.13	36.25	35.50	34.97	34.98	34.58	34.25	35.00	35.50	35.75	34.65
1994-1995	34.31	32.81	32.95	33.00	33.90	34.00	33.94	34.00	34.00	34.00	33.75	34.95	33.80
1995-1996	35.81	36.85	36.75	36.92	38.50	41.88	41.75	41.50	41.38	41.56	41.50	41.50	39.66
1996-1997	41.50	42.35	43.56	46.00	47.50	47.50	47.50	46.75	46.56	46.50	46.45	44.75	45.58
1997-1998	32.75	29.56	28.50	28.33	27.00	26.25	25.85	25.75	25.75	26.10	26.69	27.56	27.51
Large Lima - California													
1993-1994	32.50	42.38	45.33	45.08	44.75	43.69	43.10	41.31	41.06	40.88	41.25	41.10	41.87
1994-1995	41.38	43.38	43.95	44.25	44.80	44.75	44.63	44.75	45.05	45.25	46.16	47.50	44.65
1995-1996	47.94	48.35	49.19	49.58	49.80	49.75	49.75	49.88	50.53	51.56	51.70	51.63	49.97
1996-1997	51.31	52.60	53.94	54.92	55.00	56.56	58.50	60.40	60.50	60.50	60.45	60.38	57.09
1997-1998	48.50	43.06	41.13	40.42	37.94	37.06	35.80	35.50	36.00	39.70	41.31	41.25	39.81
Blackeye - California													
1993-1994	32.75	35.25	36.81	37.67	44.50	44.50	45.25	46.92	47.31	48.45	50.50	NA	42.72
1994-1995	36.00	33.25	35.55	41.67	42.20	42.06	42.06	41.88	42.00	42.00	43.00	41.30	40.25
1995-1996	33.83	30.10	28.00	27.16	26.25	25.13	25.13	30.50	31.44	31.88	31.50	31.44	29.36
1996-1997	33.00	34.00	34.38	34.50	34.38	33.69	32.69	31.00	31.00	30.63	30.60	31.00	32.57
1997-1998	31.50	31.38	31.13	30.50	30.50	30.75	30.00	29.94	29.38	30.20	31.75	35.00	31.00
Pink - California													
1993-1994	NA	NA	NA	31.00	NA	NA	NA	NA	27.88	30.00	30.00	NA	29.72
1994-1995	28.00	27.00	NE	28.00	27.33	NA	NA	NA	26.33	28.00	NA	NA	27.44
1995-1996	NE	NE	NE	26.00	26.75	25.50	NE	27.83	31.13	NE	NE	NE	27.44
1996-1997	NE	35.00	34.75	34.13	NE	34.00	34.00	32.25	31.25	31.25	32.00	31.33	33.00
1997-1998	28.00	30.25	29.50	30.00	NE	31.00	31.50	NE	NE	NE	NE	30.00	30.04
Garbanzo - California													
1993-1994	NA	NA	NA	NA	34.38	34.00	33.75	30.75	NA	NA	NA	29.31	32.44
1994-1995	32.09	41.50	44.25	45.00	45.00	44.63	42.50	42.75	43.25	NA	NA	NA	42.33
1995-1996	49.00	51.30	56.25	59.00	56.25	52.38	51.25	35.50	37.38	36.25	35.00	34.67	46.19
1996-1997	33.00	32.75	32.08	32.00	33.00	33.50	33.50	31.00	31.50	31.67	31.50	31.63	32.26
1997-1998	32.25	32.00	31.75	31.50	33.75	34.75	34.80	34.94	35.88	NE	36.00	36.00	33.97

Grower Monthly Average Price

Per Cwt By Crop Year Fob

Data prior to April 1996 Not Available

	SEP	OCT	NOV	DEC	JAN	FEB	MAR	APR	MAY	JUN	JUL	AUG	AVG
Light Red Kidney - California													
1995-1996	NA	NA	NA	NA	NA	NA	NA	NE	31.20	34.00	34.00	34.50	33.43
1996-1997	NE	37.38	39.75	40.00	40.25	40.17	39.75	39.25	39.00	38.25	37.13	35.38	38.76
1997-1998	33.50	29.50	28.83	29.00	29.00	29.00	28.90	29.00	28.75	28.80	29.75	30.00	29.50
Baby Lima - California													
1995-1996	NA	NA	NA	NA	NA	NA	NA	40.00	40.00	40.19	40.05	40.00	40.05
1996-1997	40.00	40.00	40.50	43.67	45.06	45.00	45.00	47.50	44.88	44.25	44.50	43.06	43.62
1997-1998	34.50	27.63	27.00	26.92	25.75	24.75	24.20	23.81	23.75	24.15	25.38	26.50	26.20
Large Lima - California													
1995-1996	NA	NA	NA	NA	NA	NA	NA	48.00	48.75	50.00	50.00	49.88	49.33
1996-1997	49.75	50.00	50.63	51.67	52.00	53.88	55.38	55.50	58.00	58.00	58.00	58.00	54.23
1997-1998	49.20	41.00	39.50	38.67	36.63	35.06	34.20	33.91	34.31	38.40	39.25	38.13	38.19
Blackeye - California													
1995-1996	NA	NA	NA	NA	NA	NA	NA	30.00	29.94	30.25	30.00	29.50	29.94
1996-1997	31.25	31.90	32.38	32.50	32.00	31.50	31.25	29.80	29.50	29.50	29.50	29.50	30.88
1997-1998	29.30	29.50	29.13	29.00	29.00	28.75	28.00	28.00	27.88	28.60	30.00	NE	28.83
Pink - California													
1995-1996	NA	NA	NA	NA	NA	NA	NA	NE	30.25	NE	NE	NE	30.25
1996-1997	NE	NE	32.00	32.50	NE	32.00	NE	30.00	30.00	28.75	27.75	27.50	30.06
1997-1998	26.50	NE	28.25	NE	NE	NE	NE	NE	NE	NE	NE	NE	27.38
Garbanzo - California													
1995-1996	NA	NA	NA	NA	NA	NA	NA	NE	NE	NE	NE	32.00	32.00
1996-1997	31.25	29.80	NE	29.17	NE	30.50	31.00	NE	29.00	29.33	29.50	29.33	29.88
1997-1998	29.70	29.13	29.00	29.00	29.50	31.00	30.75	31.31	31.50	NE	32.33	32.00	30.47

Dealer Monthly Average Price**Current Growing Season (1998-1999)****Per Cwt By Crop Year Fob**

	SEP	OCT	NOV	DEC	JAN	FEB	MAR	APR	MAY	AVG
PINTO - Northern Colorado	23.20	22.19	22.38	22.45	21.42	20.81	19.85	19.25	19.69	21.25
PINTO - North Dakota/Minnesota	18.80	18.75	19.63	19.44	17.42	16.13	14.75	14.56	15.94	17.27
PINTO - Idaho	24.60	24.25	24.13	23.50	22.83	21.94	21.50	20.75	20.88	22.71
GREAT NORTHERN - W.NE/E.WY	25.80	26.00	27.19	27.31	26.42	25.94	24.85	24.56	24.44	25.85
SMALL RED - Southern Idaho	26.80	26.88	28.75	31.38	29.08	28.50	27.23	26.69	26.63	27.99
PINK - Southern Idaho	28.20	27.50	27.75	27.63	27.50	27.50	27.40	27.25	26.75	27.50
BLACK - Michigan	29.50	32.25	34.88	35.50	32.67	30.50	NE	22.50	24.50	30.29
BLACK - New York	29.81	31.88	35.00	35.25	32.83	30.50	NE	NE	24.00	31.32
CRANBERRY - Michigan	34.00	34.81	35.25	35.25	34.50	34.00	32.50	31.38	31.50	33.69
LIGHT RED KIDNEY - Michigan	31.75	32.63	32.94	34.69	34.50	34.00	34.00	32.69	31.56	33.20
LIGHT RED KIDNEY - New York	31.92	32.38	32.88	34.63	34.50	34.44	33.40	32.50	27.00	32.63
LIGHT RED KIDNEY - Colorado	32.40	32.50	32.94	34.50	35.33	35.44	34.03	33.13	33.25	33.72
SMALL WHITE - Idaho/Washington	27.95	28.38	28.63	28.75	29.25	28.75	29.00	28.25	28.38	28.59
PEA BEAN - Michigan No 1's	23.00	17.81	25.58	26.25	24.67	24.50	24.10	24.94	30.25	24.57
PEA BEAN - ND/MN	20.88	23.25	25.42	25.00	23.33	22.25	21.15	23.56	28.63	23.72
DARK RED KIDNEY - Michigan	32.90	34.69	35.94	26.25	35.25	34.75	34.50	32.88	32.00	33.24
DARK RED KIDNEY - MN/WI	33.35	34.69	36.19	35.88	35.50	35.31	34.55	32.75	32.13	34.48

Grower Monthly Average Price

Current Growing Season (1998-1999)

Per Cwt By Crop Year Fob

	SEP	OCT	NOV	DEC	JAN	FEB	MAR	APR	MAY	AVG
PINTO - Northern Colorado	16.60	16.00	16.00	16.00	14.83	13.94	13.65	13.31	13.25	14.84
PINTO - North Dakota/Minnesota	14.50	13.88	14.88	14.63	13.00	11.94	11.00	10.75	11.00	12.84
PINTO - Idaho	17.25	17.00	17.13	17.13	16.00	15.00	15.00	15.00	14.50	16.00
GREAT NORTHERN - W.NE/E.WY	18.10	17.00	17.63	18.00	17.50	16.88	16.00	16.00	16.25	17.04
SMALL RED - Southern Idaho	19.20	18.88	19.50	19.88	19.83	20.00	20.00	20.00	19.00	19.59
PINK - Southern Idaho	19.63	18.38	18.38	19.00	19.00	18.13	18.50	18.50	18.63	18.68
BLACK - Michigan	24.40	26.38	27.75	27.88	26.00	WD	WD	20.00	19.00	24.49
BLACK - New York	23.50	24.88	25.75	26.00	25.33	WD	WD	WD	17.00	23.74
CRANBERRY - Michigan	28.13	29.00	29.50	29.50	29.17	28.25	28.00	NE	NE	28.79
LIGHT RED KIDNEY - Michigan	25.30	27.00	27.13	27.50	27.67	26.75	26.00	26.00	27.00	26.71
LIGHT RED KIDNEY - New York	24.25	25.38	26.38	26.00	26.00	26.00	25.70	24.88	25.00	25.51
LIGHT RED KIDNEY - Colorado	23.70	24.00	24.13	26.50	28.00	28.00	28.00	27.63	27.50	26.38
SMALL WHITE - Idaho/Washington	20.30	19.50	19.13	19.50	19.50	19.50	19.30	19.00	19.00	19.41
PEA BEAN - Michigan No 1's	16.90	17.81	19.38	19.50	19.50	18.75	17.10	17.50	20.25	18.52
PEA BEAN - ND/MN	15.25	16.38	17.63	18.00	17.00	16.75	14.80	15.38	18.00	16.58
DARK RED KIDNEY - Michigan	26.30	28.50	28.13	28.38	28.00	27.75	27.20	26.00	26.00	27.36
DARK RED KIDNEY - MN/WI	27.50	27.94	28.00	28.75	29.00	28.25	27.20	26.00	26.00	27.63

Dealer Monthly Average Price

Current Growing Season (1998-1999) - Idaho/Washington

Per Cwt By Crop Year Fob

	SEP	OCT	NOV	DEC	JAN	FEB	MAR	APR	MAY	AVG
Austrian Winter Pea	14.50	NE	NE	NE	NE	13.00	NE	NE	NE	13.75
Lentil	13.68	13.56	14.44	14.84	14.58	14.75	14.60	14.25	15.75	14.49
Green Split Pea	11.60	11.63	11.75	11.67	11.63	11.75	11.60	11.22	11.53	11.60
Whole Green Pea	9.48	9.41	9.31	9.38	9.50	9.50	9.38	9.28	9.63	9.43
Yellow Split Pea	11.31	11.41	11.22	11.19	11.29	11.38	11.38	11.00	11.25	11.27
Whole Yellow Pea	9.25	9.28	9.08	9.06	9.33	9.25	9.21	9.16	9.31	9.21

Grower Monthly Average Price

Per Cwt By Crop Year Fob

	SEP	OCT	NOV	DEC	JAN	FEB	MAR	APR	MAY	AVG
Austrian Winter Pea	NE	NE	7.75	NE	NE	7.50	7.50	NE	NE	7.58
Lentil	10.15	9.81	10.81	10.94	10.92	11.25	11.55	11.38	11.81	10.96
Whole Green Pea	6.15	6.00	6.19	6.31	6.46	6.50	6.53	6.56	6.75	6.38
Whole Yellow Pea	5.63	5.69	5.78	5.94	6.00	6.06	6.35	6.19	6.38	6.00

Dealer Monthly Average Price
Current Growing Season (1998-1999) - California

	Per Cwt By Crop Year Fob									
	SEP	OCT	NOV	DEC	JAN	FEB	MAR	APR	MAY	AVG
Light Red Kidney	32.44	33.50	NE	36.00	37.17	37.38	NE	NE	36.00	35.42
Baby Lima	30.85	33.88	38.75	46.88	48.50	47.50	47.13	46.00	42.75	42.47
Large Lima	40.40	41.38	44.25	50.66	53.00	52.88	52.10	50.44	47.94	48.12
Blackeye	32.67	32.00	32.88	35.13	38.83	40.75	41.00	41.06	40.69	37.22
Pink	NE	NE	NE	30.50	30.00	NE	NE	NE	NE	30.25
Garbanzo	36.80	37.00	35.75	36.25	37.00	37.00	35.00	35.00	36.00	36.20

Grower Monthly Average Price
Per Cwt By Crop Year Fob

	Per Cwt By Crop Year Fob									
	SEP	OCT	NOV	DEC	JAN	FEB	MAR	APR	MAY	AVG
Light Red Kidney	30.20	31.63	32.00	33.88	35.00	35.50	35.00	34.75	35.00	33.66
Baby Lima	28.70	32.25	36.50	43.63	45.00	44.75	44.75	41.00	38.94	39.50
Large Lima	38.00	38.25	41.38	48.13	50.00	50.00	50.00	48.13	46.25	45.57
Blackeye	31.17	30.00	30.75	32.38	36.00	39.00	39.20	39.50	39.63	35.29
Pink	NE	NE	NE	27.75	28.00	NE	NE	NE	NE	27.88
Garbanzo	32.00	32.00	32.00	32.00	32.00	32.00	30.00	30.00	NE	31.50

Dry Edible Beans, U.S. Production by Commercial Class (1,000 Cwt.)

Class	1998	1997	1996	1995	1994	5 Year Average
Pea Bean, (Navy)	3,935	5,487	6,001	7,319	5,291	5,607
Great Northern	2,169	2,267	2,252	2,176	1,645	2,102
Small White	60	185	113	163	164	137
Pinto	14,832	10,827	12,162	11,349	12,741	12,382
Red Kidney	1,993	2,541	2,095	2,241	2,808	2,336
Pink	872	699	528	652	815	713
Small Red	660	900	405	745	773	697
Cranberry	401	661	503	575	419	512
Black	3,570	2,100	1,350	2,305	1,462	2,157
Large Lima	475	698	394	415	429	482
Baby Lima	300	914	517	510	609	570
Blackeye	749	802	567	1,091	842	810
Garbanzo	338	381	504	473	328	405
Other	686	694	569	798	702	690
Total	31,040	29,156	27,960	30,812	29,028	29,599

Source: USDA, NASS. *Subject to revision.

Canadian Crop Production

Pea Beans

PROVINCE	Harvested Acres (1,000)				Production (1,000MT)			
	1998	1997	1996	1995	1998	1997	1996	1995
Alberta	9.88	4.94			9.10	4.50		
Manitoba	49.91	49.91	35.09	35.09	36.30	31.80	20.00	23.60
Ontario	35.09	60.05	75.12	114.90	25.40	43.50	40.80	90.7
Quebec	3.46	3.46	0.15	0.20	3.10	2.80	1.30	1.50
TOTAL	98.35	118.36	110.35	150.19	73.90	82.60	62.10	115.80

Colored Beans

PROVINCE	Harvested Acres (1,000)				Production (1,000MT)			
	1998	1997	1996	1995	1998	1997	1996	1995
Alberta	35.09	29.90	20.02	29.90	36.30	31.80	18.10	27.20
Manitoba	49.91	29.90	20.02	29.90	35.80	15.90	12.20	22.20
Ontario	39.78	29.90	29.90	35.09	31.80	22.70	19.10	27.2
Quebec	8.65	8.65	7.41	8.90	7.30	7.50	6.20	8.00
TOTAL	133.43	98.35	77.34	103.78	111.20	77.90	55.60	84.60

Dry Peas

Province	Harvested Acres (1,000)				Production (1,000MT)			
	1998	1997	1996	1995	1998	1997	1996	1995
Alberta	499.88	384.98	340.01	445.03	488.00	421.80	356.50	412.30
British Columbia	9.88	4.94	4.94	29.90	9.10	4.10	4.10	27.20
Manitoba	255.01	205.09	145.05	179.89	225.90	178.30	136.90	147
Saskatchewan	1899.95	1499.90	879.92	1299.99	1613.90	1158.00	747.90	868.20
TOTAL	2664.73	2094.91	1369.92	1954.81	2336.90	1762.20	1245.40	1454.70

Lentils

Province	Harvested Acres (1,000)				Production (1,000MT)			
	1998	1997	1996	1995	1998	1997	1996	1995
Alberta	15.07	24.96	24.96	29.90	8.00	8.30	8.40	15.30
Manitoba	13.10	7.91	47.94	49.91	5.90	5.30	25.20	28.5
Saskatchewan	890.05	780.09	709.92	720.05	465.80	365.10	383.70	381.90
TOTAL	918.22	812.96	782.81	799.86	479.70	378.70	417.30	425.70

Source: Statistics Canada, Field Crop Reports

Dry Edible Beans, Production by Commercial Class (1,000 cwt)

Small Red						Pink						Black					
State	1998	1997	1996	1995	1994	State	1998	1997	1996	1995	1994	State	1998	1997	1996	1995	1994
ID	275	470	263	335	508	CA	70	84	125	98	151	CA	40		17	28	34
MI	200	150	35	160	0	ID	373	332	167	301	462	CO	14	8		19	10
WA	185	280	107	250	265	MN	90	115	66	66	0	ID	107	51	21	55	40
Total	660	900	405	745	773	ND	189	95	96	59	87	MI	2100	1400	940	1700	990
						NM	0	0	8	18	28	MN	171	85	41	83	43
						WA	150	93	66	110	87	NE	56	46	19	17	32
						Total	872	699	528	652	815	ND	816	334	213	208	87
												NY	147	176	100	135	146
												WA	55			60	80
												WY	64				
												Total	3570	2100	1350	2305	1462
Small White						Cranberry						Blackeye					
State	1998	1997	1996	1995	1994	State	1998	1997	1996	1995	1994	State	1998	1997	1996	1995	1994
ID	31	79	57	62	64	CA	40	70	45	42	0	CA	666	690	511	970	771
MI	0	0	0	15	10	ID	18	24	24	19	0	TX	83	112	56	121	71
OR	7	28	10	36	53	MI	285	520	400	470	360	Total	749	802	567	1091	842
WA	22	78	46	50	37	MN	58	47	34	44	59						
Total	60	185	113	163	164	Total	401	661	503	575	419						
Great Northern						Baby Limas						Pea Bean (Navy)					
State	1998	1997	1996	1995	1994	State	1998	1997	1996	1995	1994	State	1998	1997	1996	1995	1994
CO	0	5	21	64	14	CA	300	914	517	510	609	CO	0	3	0	14	36
ID	158	122	167	158	73	Total	300	914	517	510	609	ID	35	92	152	139	70
KS	0	22	37	28	0							KS	0	0	18	17	26
MN	24	40	48	67	0							MI	1180	2320	2600	3950	2750
NE	1855	1974	1817	1723	1478							MN	784	891	783	645	678
WA	0	0	52	40	0							NE	102	117	95	110	66
WY	132	104	110	96	80							NM	40	92	110	85	93
Total	2169	2267	2252	2176	1645							ND	1767	1878	1929	2066	1524
												OR	9	34	42	43	19
												WY	18	60	72	30	29
												Total	3935	5487	6001	7319	5291
Garbanzo						Large Lima											
State	1998	1997	1996	1995	1994	State	1998	1997	1996	1995	1994						
CA	85	136	352	288	262	CA	475	698	394	415	429						
ID	135	102	37	63	9	Total	475	698	394	415	429						
OR	59	66	34	20	13												
WA	59	77	81	102	44												
Total	338	381	504	473	328												

Source: Compiled by USDA, AMS

Dry Edible Beans, Production by Commercial Class (1000 cwt)

All Red Kidney*						Light Red Kidney					Dark Red Kidney						
State	1998	1997	1996	1995	1994	State	1998	1997	1996	1995	1994	State	1998	1997	1996	1995	1994
CA	190	268	269	281	388	CA	130	197	187	209	263	CA	60	91	82	72	125
CO	150	248	114	263	154	CO	150	248	114	263	154	ID	21	11	12	20	11
ID	53	37	29	38	22	ID	32	26	17	18	11	MI	90	150	100	210	230
MI	260	380	240	410	400	MI	170	230	140	200	170	MN	462	510	630	399	692
MN	625	665	809	499	897	MN	163	155	179	100	205	ND	32	24	50	43	93
NE	252	365	199	234	241	NE	252	365	199	234	241	NY	88	33	38	64	73
ND	32	24	50	43	93	NY	209	348	203	292	303	WI	115	153	144	117	237
NY	297	381	241	356	376	WA	19	0	0	0	0	Total	868	972	1,056	925	1,461
WA	19	0	0	0	0	Total	1,125	1,569	1,039	1,316	1,347						
WI	115	153	144	117	237												
Total	1,993	2,641	2,095	2,241	2,808												

Pinto						Other					Total						
State	1998	1997	1996	1995	1994	State	1998	1997	1996	1995	1994	State	1998	1997	1996	1995	1994
CO	2,873	1,991	2,112	2,158	2,912	CA	150	110	95	180	127	CA	2,016	2,970	2,325	2,740	2,771
ID	914	886	976	971	1,414	CO	3	25	3	40	14	CO	3,040	2,280	2,250	2,558	3,140
KS	354	315	370	410	508	ID	13	20	14	19	29	ID	2,112	2,215	1,907	2,160	2,891
MI	293	170	120	70	60	KS	26	43	19	28	26	KS	380	380	444	481	560
MN	744	485	573	433	295	MI	107	93	105	155	110	MI	4,425	5,033	4,640	6,930	4,680
MT	264	257	235	205	220	MN	42	75	64	18	107	MN	2,538	2,403	2,418	2,055	2,079
NE	1,386	1,188	1,560	1,414	1,719	MT	42	75	64	18	107	MT	266	257	235	205	220
NM	92	112	146	140	155	NE	15	18	16	90	36	NE	3,666	3,708	3,705	3,588	3,572
ND	6,832	4,480	5,138	4,704	4,280	NM	39	0	0	8	7	NM	171	204	264	251	283
OR	42	39	40	40	76	NY	38	60	36	47	63	NY	426	617	377	538	585
TX	3	17	8	23	121	ND	106	79	98	82	39	ND	9,798	6,890	7,524	7,182	6,110
UT	30	39	10	32	24	OR	35	57	32	69	36	OR	152	224	158	208	197
WA	380	235	311	250	273	TX	49	14	20	81	26	TX	135	143	84	225	218
WY	625	613	563	499	684	WA	20	87	47	40	54	UT	30	39	10	32	24
Total	14,832	10,827	12,162	11,349	12,741	WY	41	13	20	15	28	WA	890	850	710	902	840
						Total	726	769	633	688	809	WI	115	153	144	117	237
												WY	880	790	765	640	821
												Total	31,040	29,156	27,960	30,812	29,028

Source: USDA, NASS and Annual Crop Summary - January 1998

USDA Dry Bean, Pea, and Lentil Production Data 1993-1997

Lentil

State	Area Planted (1,000 Acres)					Area Harvested (1,000 Acres)					Yield (Pounds)					Production (1,000 Cwt.)				
	1998	1997	1996	1995	1994	1998	1997	1996	1995	1994	1998	1997	1996	1995	1994	1998	1997	1996	1995	1994
Idaho	55	61	56	71	86	53	60	55	70	85	1,100	1,500	800	1,450	1,100	583	900	440	1,015	935
Washington	62	77	63	79	94	62	77	62	75	93	1,350	1,450	1,100	1,400	990	837	1,124	682	1,050	921
Other States	42	43	28	18	0	40	35	23	18	0	1,130	1,050	917	883	0	457	367	211	159	0
United States	159	181	147	168	180	155	172	140	163	178	1,207	1,390	952	1,364	1,043	1,877	2,391	1,333	2,224	1,856

Dry Edible Pea

State	Area Planted (1,000 Acres)					Area Harvested (1,000 Acres)					Yield (Pounds)					Production (1,000 Cwt.)				
	1998	1997	1996	1995	1994	1998	1997	1996	1995	1994	1998	1997	1996	1995	1994	1998	1997	1996	1995	1994
Idaho	69	75	61	70	49	67	74	59	68	47	1,700	2,100	1,000	2,300	1,800	1,139	1,554	590	1,564	846
Washington	108	116	109	112	82	108	116	108	111	81	2,100	2,230	1,300	2,500	1,740	2,268	2,587	1,404	2,775	1,409
Other States	146	103	46	16	0	134	86.6	37.9	15	0	1,829	1,934	1,786	2,840	0	2,451	1,675	677	426	0
United States	323	294	216	198	131	309	276.6	204.9	194	128	1,896	2,103	1,304	2,456	1,762	5,858	5,816	2,671	4,765	2,255

Austrian Winter Pea

State	Area Planted (1,000 Acres)					Area Harvested (1,000 Acres)					Yield (Pounds)					Production (1,000 Cwt.)				
	1998	1997	1996	1995	1994	1998	1997	1996	1995	1994	1998	1997	1996	1995	1994	1998	1997	1996	1995	1994
Idaho	8.0	7.5	8.0	10.0	6.0	7.0	7.2	7.0	7.0	4.0	1,400	1,500	1,400	1,500	1,100	98	108	98	105	44
Oregon	1.0	0.6	0.6	0.9	1.0	0.4	0.4	0.3	0.7	0.6	1,500	1,750	1,667	2,000	1,167	6	7	5	14	7
United States	9.0	8.1	8.6	10.9	7.0	7.4	7.6	7.3	4.6	7.7	1,405	1,513	1,411	1,109	1,545	104	115	103	51	119

Wrinkled Seed Pea

States	Production (1,000 cwt)					
	1998	1997	1996	1995	1994	1993
Idaho	NA	286	316	493	368	577
Washington	NA	396	232	555	386	272
United States	NA	682	548	1048	754	849

Source: Agricultural Statistics Board, NASS, USDA

Dry Pea and Lentil Production Data 1992-1997*

				CHICK PEA							
				Year	Acreage	Avg lbs	Production lbs				
				1998	22,056	1,106	24,390,500				
				1997	12,168	1,391	16,920,777				
				1996	17,760	666	11,832,620				
				1995	13,137	1,369	17,978,008				
				1994	4,165	513	2,136,373				
				1993	6,729	827	5,618,798				
				1992	6,772	821	5,008,250				
				10 Yr Avg	9,793	1,001	9,802,296				
				LENTIL							
				Year	Acreage	Avg lbs	Production lbs.				
				1998	58,096	1,239	72,002,949				
				1997	95,259	1,222	116,446,926				
				1996	88,232	894	78,905,656				
				1995	129,395	1,250	161,804,536				
				1994	174,677	917	160,189,216				
				1993	155,838	1,319	205,474,833				
				1992	132,027	1,160	153,096,575				
				10 Yr Avg	116,195	1,131	131,365,028				
				OTHER LENTIL VARIETIES							
				Year	Acreage	Avg lbs	Production lbs.				
				1998	98,556	1,069	105,366,971				
				1997	59,047	1,586	93,650,994				
				1996	52,298	658	34,401,606				
				1995	42,814	1,314	56,248,274				
				1994	48,131	1070	51,522,016				
				5 Yr Avg	62,082	1,099	68,237,972				
REGULAR GREEN								SMALL SIEVE GREEN			
Year	Acreage	Avg lbs	Production lbs.	Year	Acreage	Avg lbs	Production lbs	Year	Acreage	Avg lbs	Production lbs
1998	197,365	2,142	422,687,215	1998	6,354	1,827	11,611,921	1998	6,354	1,827	11,611,921
1997	156,861	2,291	359,320,171	1997	10,865	1,725	18,741,862	1997	10,865	1,725	18,741,862
1996	141,097	1,141	161,033,931	1996	10,302	1,077	11,092,055	1996	10,302	1,077	11,092,055
1995	159,249	2,255	359,127,907	1995	7,839	2,645	19,327,020	1995	7,839	2,645	19,327,020
1994	107,074	1,701	182,138,971	1994	7,615	1,784	13,586,278	1994	7,615	1,784	13,586,278
1993	144,185	2,096	302,180,620	1993	3,917	2,087	8,175,949	1993	3,917	2,087	8,175,949
1992	150,122	1,467	220,198,154	1992	5,288	1,479	7,818,433	1992	5,288	1,479	7,818,433
10 Yr Avg	145,779	1,933	281,736,595	10 Yr Avg	7,110	1,814	12,899,767	10 Yr Avg	7,110	1,814	12,899,767
YELLOW PEA								AUSTRIAN WINTER PEA			
Year	Acreage	Avg lbs	Production lbs.	Year	Acreage	Avg lbs	Production lbs	Year	Acreage	Avg lbs	Production lbs
1998	98,258	2,016	198,075,267	1998	10,187	2,307	23,506,249	1998	10,187	2,307	23,506,249
1997	37,481	2,038	76,383,732	1997	13,054	954	12,449,989	1997	13,054	954	12,449,989
1996	25,957	1,034	26,833,781	1996	6,893	1,406	10,531,800	1996	6,893	1,406	10,531,800
1995	23,192	1,683	34,291,888	1995	8,224	1,406	11,563,195	1995	8,224	1,406	11,563,195
1994	9,789	1,571	15,381,632	1994	4,931	1,154	5,690,485	1994	4,931	1,154	5,690,485
1993	4,894	2,594	12,695,981	1993	11,857	1,276	15,130,100	1993	11,857	1,276	15,130,100
1992	13,392	1,534	20,542,915	1992	7,808	1,050	8,198,174	1992	7,808	1,050	8,198,174
10 Yr Avg	30,612	1,782	54,553,996	7 Yr Avg	8,993	1,365	12,438,570	7 Yr Avg	8,993	1,365	12,438,570

* - Figures include US dry pea and lentil figures as reported by member processors

Source: USA Dry Pea and Lentil Council

BEANS, DRY: U.S. EXPORTS BY COUNTRY OF DESTINATION, October 1997-September 1998

(Data in Metric Tons)

Country	Navy or Pea	Great Northern	Large Lima	Baby Lima	White n.e.c.	Lt. Red Kidney	Dk Red Kidney	Pinto	Black	Beans n.e.c.	Seed Beans	Small Reds	Total
NORTH AMERICA:													
Antigua & Barbuda						23	76						99
Bahamas, The											11		11
Belize						4							4
Canada	3208		500			1478	573			2174	2354	536	10823
Costa Rica		4			28	8	10		3595	42	155	499	4399
Dominican Republic	175	76		50			38	4963	68		22		5392
El Salvador								99		80			179
French W. Indies	28					322	356			34			740
Guatemala								574	589		181		1324
Haiti					41		6	19610	99	51		150	19957
Honduras							381		20			1204	1605
Jamaica & Dep.	128		20	79		14	139				28	18	427
Mexico	1839		219	147	106	915	1302	61230	29845	13286	2757	128	111373
Netherlands-Antilles			13	7		88	54	6	8				188
Nicaragua								301					301
Panama				20	36	534	66	12	104	76	9	77	925
SOUTH AMERICA:													
Argentina											371		371
Brazil		58	108				78	111	1958	107	41	542	3007
Chile								798			166		954
Colombia	383					414		3		445	184	968	2897
Ecuador	102						40						142
French Guiana						360	58			71			489
Guyana							19	120					139
Leeward-Windward						117	865						802
Peru			224	563		175	20	140		428	24		1574
Surinam						3							3
Trinidad-Tobago							183			11	2		176
Uruguay											3		3
Venezuela	59	464	67	18		1231	340		3158	109	496		5943
EUROPE:													
Armenia								507					507
Belgium & Lux.	19	1372			151		472	13			74		2101
Bulgaria								899					899
Bosnia	631						418						1050
Croatia										74			14
Cyprus											3		3
Denmark									6				6
France	323	4451	2			201	3851		139	1	413		9391
Georgia, Rep. Of							958					659	1817
Germany	22	202			124		1777		12	43	1		2186
Greece	19	2222						27		58	170		2496
Hungary											44		44
Iceland				38									38
Ireland			80				60				2		142
Italy	11051	808	94	37			4558		62	2873	1215		26777
Moldova, Rep. Of								220					220
Netherlands	1178	697	199	36		20	794	75	31	833	2285		5998
Poland							150			15			169
Portugal	58	102				1218	812	139	104	266		109	2808
Russian Federation		5					323						326
Slovakia	29							29					58
Slovenia		41								18			60
Spain	287	952			19	58	509	87	187	4818	548		7472
Sweden	18	93				1	18		2	18		24	175
Switzerland		64					428	81		6			577
Turkey		1045								815	298		2259
United Kingdom	74941	251	2968	78		18	4490	232	36	905	358	20	83690

BEANS, DRY: U.S. EXPORTS BY COUNTRY OF DESTINATION, October 1997-September 1998

(Data in Metric Tons)

Country	Navy or Pea	Great Northern	Large Lima	Baby Lima	White n.e.c.	Lt Red Kidney	Ok Red Kidney	Pinto	Black	Beans n.e.c.	Seed Beans	Small Reds	Total
A\$IA													
Azerbaijan, Rep								460					460
Bahrain									35				35
China(Mainland)										3361	19	8	3388
Hong Kong	75	27	6*			80	25	18	163	14	18	11	492
India			3						36	1699			1738
Indonesia											8		8
Iraq		29885											29885
Israel	2	365									27		364
Japan	58	2020	2569	11941	112	9	162	5	19	118	1134	274	18201
Jordan									18		122		140
Korea	238	1150			55		55		18	40			1554
Kuwait		100	11				33		16	10			172
Lebanon								22		103	29		154
Malaysia	69	1172			42		31						1314
Ontario						17					225		242
Philippines	20	1066			41		21		72	64			1284
Saudi Arabia	133					80	4			111	80		394
Singapore	6									1			7
Sri Lanka											115		115
Syria										3	221		224
Taiwan			9	53			36		86	7	16		247
Thailand	20							20		2105	20		2165
United Arab Emirates			58			56	35	10	36	92	22		307
Vietnam										58			58
OCEANIA													
Australia	3719	837	314	293	535	106	162	373	58	713	1243	676	9032
French Polynesia					42							68	110
New Zealand	9205	18		20			126	20	4	117	61	18	3589
AFRICA													
Algeria	670	2780											3650
Angola	100							4944				386	5333
Burkina Faso								2223					2223
Cape Verde Is.						279	328	828					1435
Egypt										7	36		43
Ghana	411												411
Guinea								147					147
Kenya												710	710
Liberia								2000					2000
Malawi										6			6
Morocco			20								3		23
Rwanda												90	90
So. Africa, Rep of	491			36						16	176		715
Others	61					76	45			59	11	3	205
Oct 97-Sep 98	103756	52338	7337	13451	1332	7841	25081	101065	40385	35812	15785	7185	411368

Source: Foreign Agricultural Service, Compiled by USDA Market News

Note: Bean, N.E.C. includes Beans Other, Beans other Ex Seed, Beans Misc, Chickpeas, Cranberry, and Mung Beans

PEAS, DRIED: U.S. EXPORTS BY COUNTRY OF DESTINATION, October 1997-September 1998

(Data in Metric Tons)

Country	Lentils	Yellows	Green	Other n.e.c.	Austrian Winter	Blackeye	Seed	Total
NORTH AMERICA								
Antigua & Barbuda	8					21		29
Canada	13846		1004	10806			7367	29340
Costa Rica	6		124				94	177
Dominican Republic	7		21	51			623	851
El Salvador				5				5
French W. Indies	131	32	17			5	5	188
Guatemala				2			319	162
Haiti	740		4106					4846
Honduras				4			12	10
Jamaica & Dep.			208					208
Mexico	4142	947	1910	118			620	7427
Netherlands-Antilles								37
Nicaragua			20					20
Panama	90		18		64		18	190
SOUTH AMERICA								
Argentina	3		119	13			255	263
Bolivia	488		1495					1984
Brazil	231		952	36		1014	36	2251
Chile			128	13			433	358
Colombia	47	776	1858	107		951	206	3842
Ecuador			486	8			88	538
French Guiana	40							40
Guyana		180	67					247
Leeward-Windward	21	25	17					63
Peru	11260	269	8963	547		125	2564	22446
Trinidad-Tobago		68						68
Uruguay	13						10	18
Venezuela	309		100	121			45	553
EUROPE								
Armenia	247		242					489
Austria				77				77
Belgium & Luxembourg				8000			296	8148
Cyprus						200		200
Denmark							519	260
Finland							163	82
France	69			172		40	1006	784
Germany	21			5			796	424
Greece	1167		10	159		457	46	1826
Hungary							71	36
Iceland							91	46
Ireland				5			71	41
Italy	3005		1037	58		137	1615	5045
Netherlands	125		51	400		36	700	962
Norway			150				58	179
Poland	21							21
Portugal				123		951	76	1112
Russian Federation	20		65					85
Spain	18328		106	167		492	1066	19626
Sweden	216					27	1219	853
Tajikistan, Rep.	989							989

PEAS, DRIED: U.S. EXPORTS BY COUNTRY OF DESTINATION, October 1996-September 1997

Country	(Data in Metric Tons)						Total	
	Lentils	Yellows	Green	Other n.e.c	Austrian Winter	Blackeye		Seed
Turkey	635		618	60			57	1332
United Kingdom	82		50	305		475	3733	2779
ASIA								
Bahrain	54							54
China(Mainland)	2		42	20		18	180	172
Hong Kong	42	30	133	163	102	369	393	1036
India	2118		5860	2940		48	42	10987
Israel	6		66	6		91	90	178
Japan	110	38	1404	188	403		447	2367
Jordan	16		41			82		139
Korea	18	273	1713	3		18	45	2048
Kuwait						116		116
Lebanon	21			57		18	87	140
Malaysia			21			91		112
Oman	9							9
Pakistan			146				77	185
Philippines		1089	11931	19			18	13048
Saudi Arabia	142		82			103		327
Singapore						36		36
Syria	2						131	68
Taiwan	18	1167	1724	13	1308	129	121	4420
Thailand	53		21		20			94
United Arab Emirates				36		645	15	689
OCEANIA								
Australia	414		148	1464		269	784	2687
French Pacific Is	566			3				569
New Zealand			17	12		18	35	65
Other Pacific Is	22							22
AFRICA								
Algeria							18	9
Angola	1076		1917					2993
Benin			498					498
Egypt	87							87
Ethiopia	559							559
Ghana			95			8	138	172
Guinea			69					69
Kenya	329						140	399
Liberia			2500					2500
Malawi	48			271				319
Morocco							11	6
Mozambique			1993					1993
Rwanda		1375	5902					7277
Sierra Leone	4661		879					5540
So. Africa, Rep of				57			167	141
Sudan	1701		500					2201
Tanzania			4538					4538
Uganda			4316					4316
Others	108	7		8				123
Oct 97-Sep 98	68490	6276	70498	27072	1897	6982	27199	389702

Source: Foreign Agricultural Service, Compiled by USDA Market News

Note: Other n.e.c. consists of Peas other ex seed, Dried Peas, and Split Peas.

U.S. Exports, Dry Beans (cwt)

Beans	Oct 97-Sep 98	Oct 96-Sep 97	Oct 95-Sep 96	Oct 94-Sep 95	Oct 93-Sep 94	Oct 92-Sep 93
Pea Bean	2,286,782	2,078,626	2,026,534	2,035,265	1,576,532	1,811,696
Great Northern	1,219,650	852,126	660,388	784,375	361,488	340,743
Lima	458,168	394,856	390,214	450,069	483,667	464,664
White n.e.c.	29,357	12,100	25,331	160,781	35,406	151,214
Kidney	228,092	799,524	719,405	788,299	776,196	785,808
Pinto	2,227,473	1,519,430	1,898,668	2,504,514	1,860,264	1,246,503
Black	890,085	487,806	513,716	236,554	198,612	294,909
Beans n.e.c. **	789,296	570,174	448,526	810,599	796,475	910,852
Seed	347,901	310,838	261,620	243,079	239,552	442,287
Small Red	158,357	250,998	264,045	391,030	389,928	266,757
Total	8,635,162	7,276,478	7,208,447	8,404,565	6,718,120	6,715,433

* included in Beans, n.e.c. prior to 1992-1993

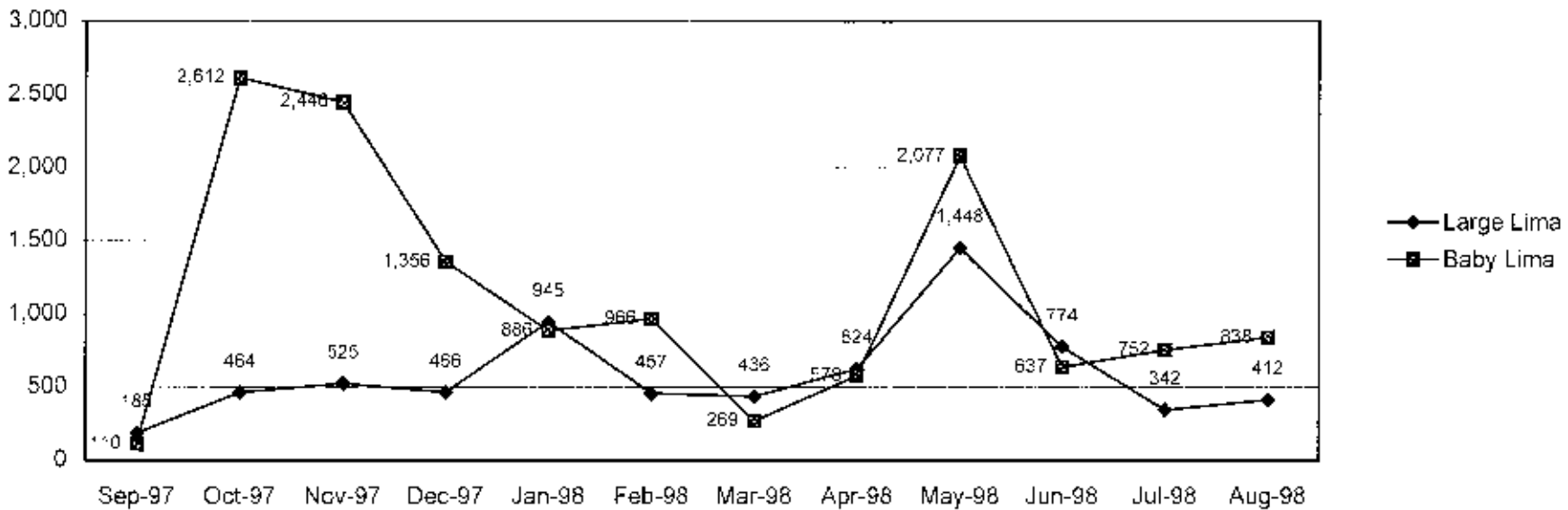
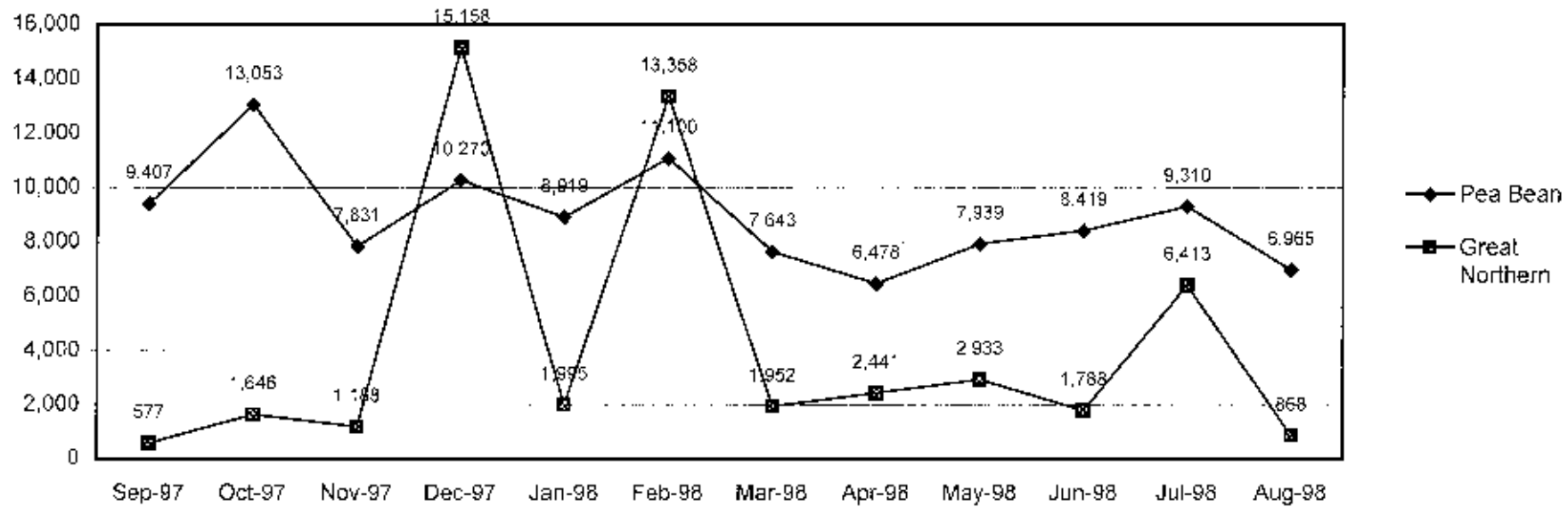
** Bean, N.E.C. includes Beans Other, Beans other Ex Seed, Beans Misc, Chickpeas, Cranberry, and Mung Beans

U.S. Exports, Dry Ripe Peas (cwt)

Peas	Oct 97-Sep 98	Oct 96-Sep 97	Oct 95-Sep 96	Oct 94-Sep 95	Oct 93-Sep 94	Oct 92-Sep 93
Austrian Winter	41,810	57,134	50,463	28,858	69,842	45,900
Blackeye	153,883	58,894	66,998	81,482	68,739	159,150
Green	1,553,776	926,266	2,000,763	1,549,856	1,710,285	1,372,826
Lentils	2,170,720	1,240,206	1,233,738	1,512,069	1,978,011	1,343,725
Other n.e.c.	596,667	126,456	94,158	265,897	118,056	68,078
Seed	599,466	507,364	578,509	626,790	571,895	474,893
Yellow	138,323	127,314	144,908	101,279	220,504	146,231
Total	5,254,645	3,043,634	4,169,537	4,166,231	4,737,332	3,610,803

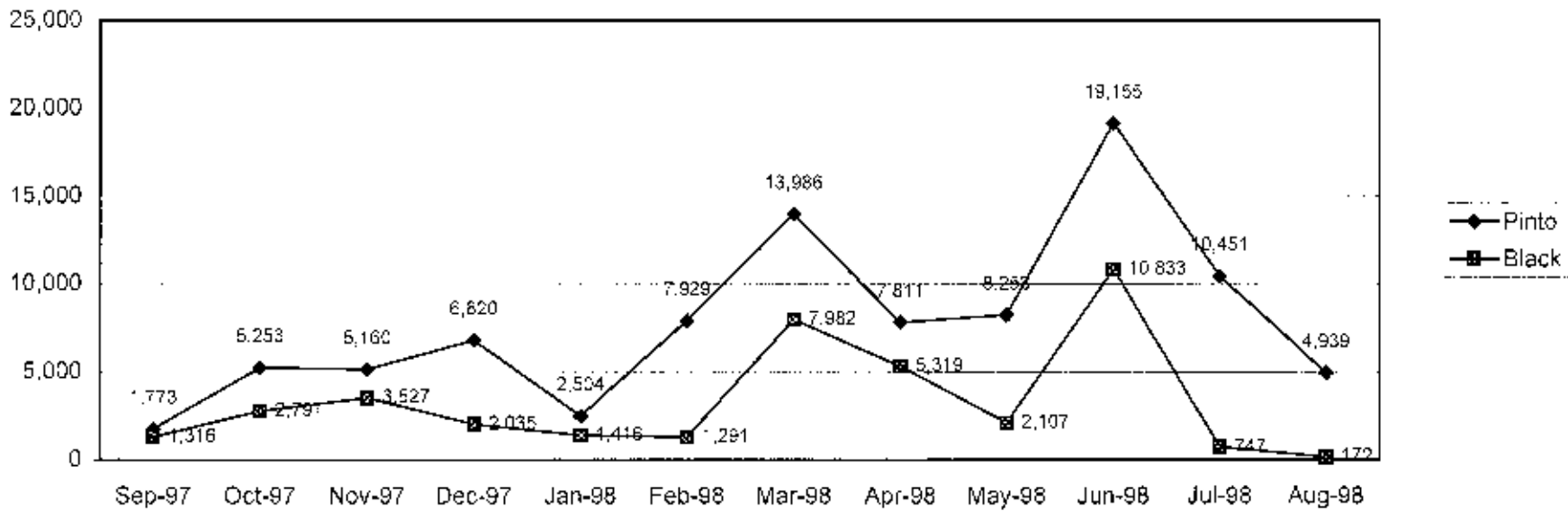
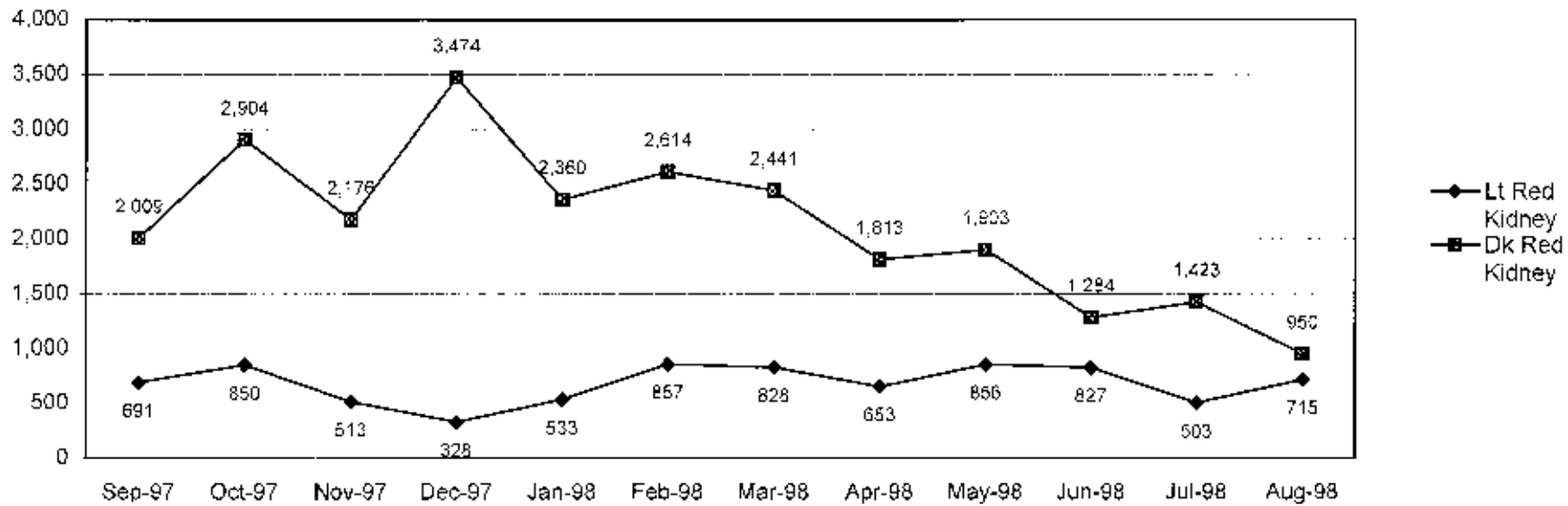
BEANS, DRY: U.S. EXPORTS BY MONTH, September 1996-August 1997

Data in Metric Tons



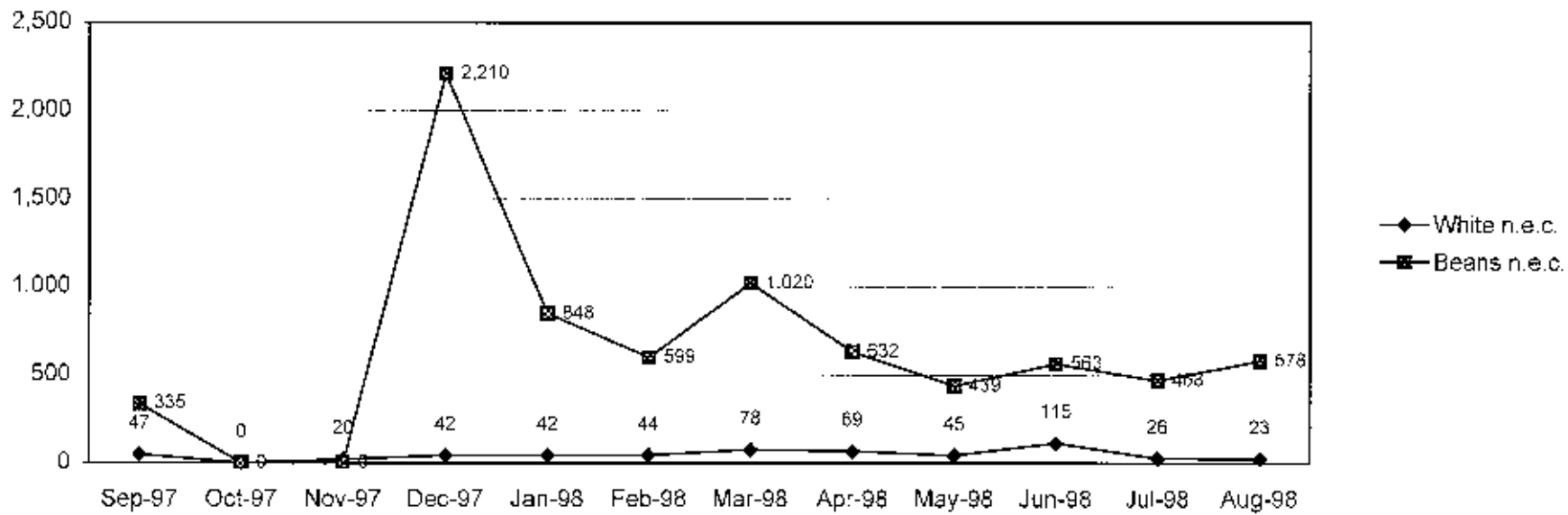
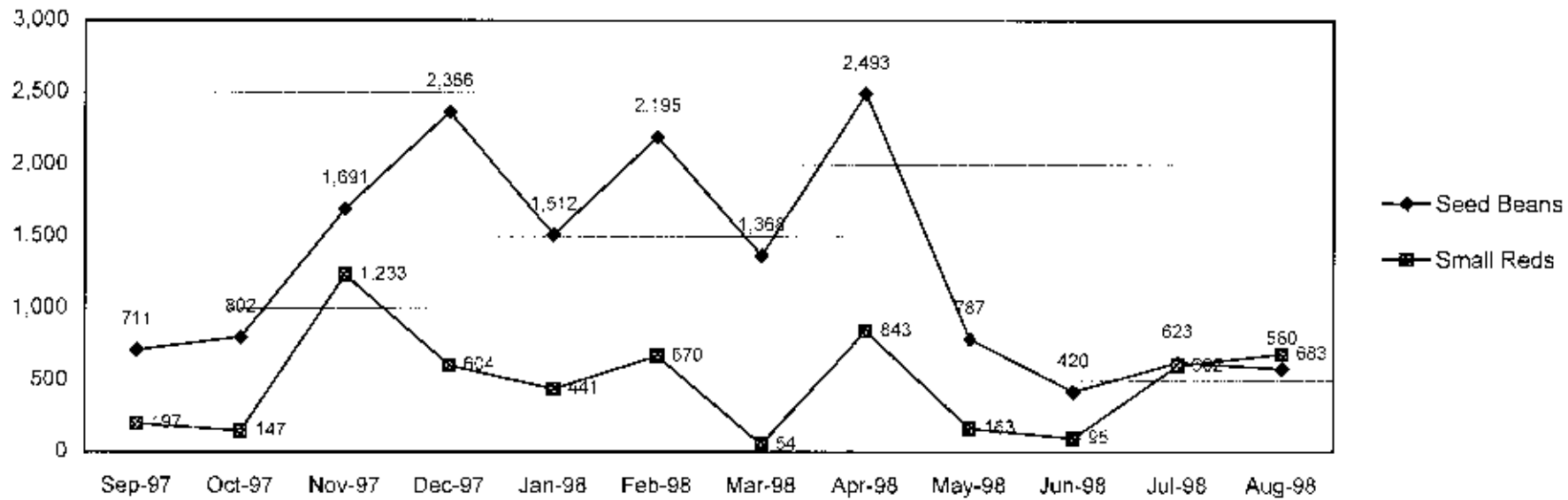
BEANS, DRY: U.S. EXPORTS BY MONTH, September 1996-August 1997

Data in Metric Tons



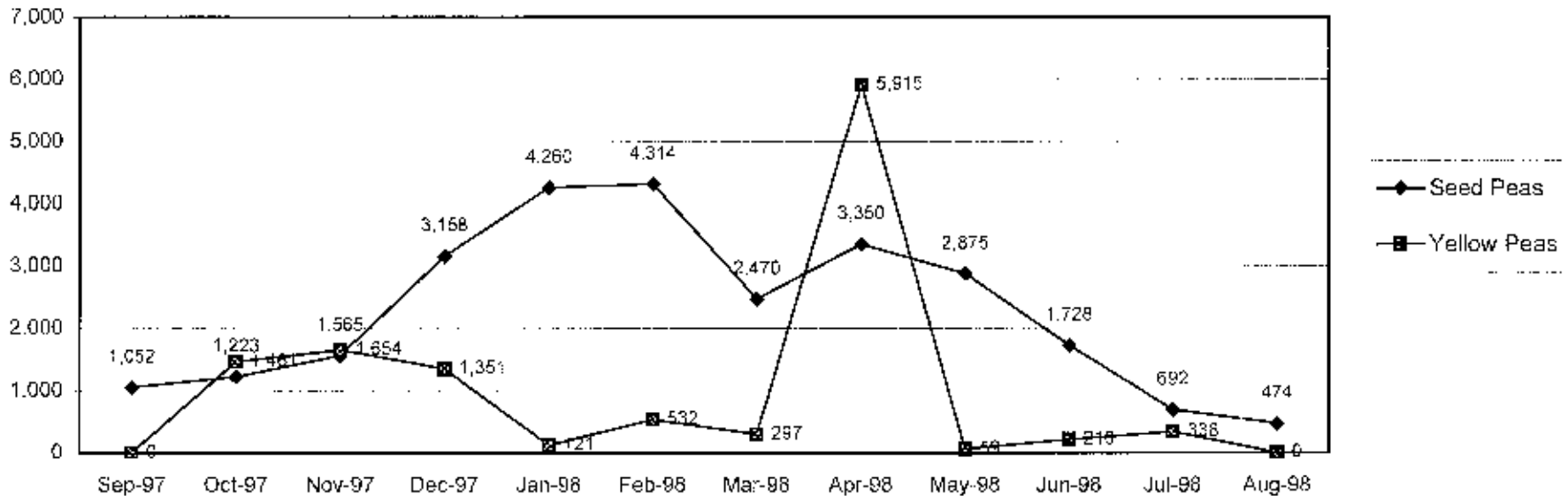
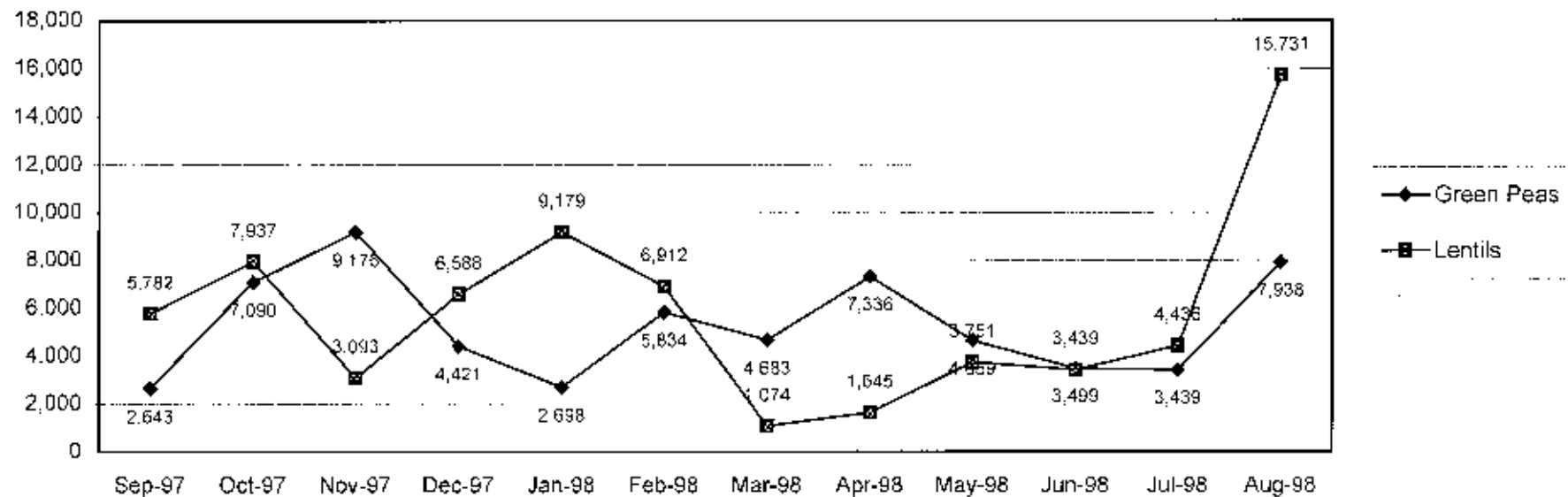
BEANS, DRY: U.S. EXPORTS BY MONTH, September 1997-August 1998

Data in Metric Tons



PEAS, DRY: U.S. EXPORTS BY MONTH, September 1997-August 1998

Data in Metric Tons



CANADIAN EXPORTS BY COUNTRY OF DESTINATION

(Data in Metric Tons, Calander Year)

Country	Lentils			Peas			Pea Beans			Other Beans		
	1998	1997	1996	1998	1997	1996	1998	1997	1996	1998	1997	1996
NORTH AMERICA:												
Bermuda	66	180			22						38	38
Costa Rica	250	170	202	43	36	224	31	53	63	2824	2485	2485
Cuba	9963	27		106320	87599	81619	6096	107	114	6293	212	212
Dominican Rep	389	119	168	321	105	348				1174	1577	1577
French W. Indies	128	144			6							
Guatemala				452							165	165
Haiti					258					1928	2814	2814
Jamaica & Dep.										112	287	287
Leeward-Windward Is.	152											
Mexico	14924	11447	9097	8603	4423	3259	476	60		2314		
Netherlands-Antilles				224								
Nicaragua					241					61		
Panama	3493	3689	3692	1830	148	149				464	276	276
St Lucia	84	82	107	22	3					63		
Trinidad & Tobago	2032	1543	1969	3372	4035	253	67	64	43	187	45	45
United States	11005	11712	5203	7907	11578	6322	2735	4015	5134	26673	31835	31835
SOUTH AMERICA:												
Argentina	2127	4266	4803	85	63	456						
Bolivia	65			43								
Brazil	11699	4608	6878	4093	9959				304	6526	363	363
Chile	12823	11279	8697	4230	3277	767				449	43	43
Colombia	31830	40101	30661	32458	27062	29000	750	567	157	6517	10580	10580
Ecuador	11024	13080	9407	5958	5541	4483	353	104		122	124	124
Grenada	22	8		58	51					7		
Guyana				1023	401							
Paraguay	39	21										
Peru	11688	8025	8020	18198	8095	3802	19	171		298	148	148
Surinam				336	24						13	13
Uruguay	1470	1316	2354	143	136	175				21		
Venezuela	13645	12324	10390	13348	15738	6483	359	21		3417	3106	3106
EUROPE:												
Albania	816											
Belgium & Luxembourg	16268	15391	18512	51946	129697	147041	672	163	219	305	146	146
Bulgaria	1433	1023						20				
Croatia		85								57	257	257
Cyprus	527	710	572								7	7
Czech Republic	1066	1229	2084				256				21	21
Denmark	3	21	30	107						5		
France	12405	11192	16054	1362	287	38550	433	83	607	1046	726	726
Germany	13765	15804	12466	15383	5537	2871	3346	745	2020	765	1638	1638
Greece	10262	8509	8471	43	96		10	136	30	1790	1887	1887
Ireland	64			19843	18835	29171	2098	1987	1897	64	81	81
Italy	17449	14457	18935	6191	12901	13997	2421	3433	5538	7047	6604	6604
Malta Gozo				64			120	42				
Netherlands	4200	4454	8127	24094	9234	17591	2749	1003	43	1247	890	890
Poland	151	85	147		42	234			1012	172		
Portugal	1020	103		758	459	730	19	21	21	4665	3188	3188
Romania				85	42						64	64

CANADIAN EXPORTS BY COUNTRY OF DESTINATION

(Data in Metric Tons, Calendar Year)

Country	Lentils		1996		1998		Peas		1996		1998		Pea Beans		1996		1998		Other Beans		1998	
	1998	1997	1996	1998	1997	1996	1998	1997	1996	1998	1997	1996	1998	1997	1996	1998	1997	1998	1997	1998		
Russian Federation														15	19							2717
Slovakia														19								41
Slovenia																						466
Spain	25637	25004	26190	354740	286724	168928	332	314	315	6395	3496	2871										
Sweden	168	66	139	247	20	116		7		169	102	119										
Switzerland	3160		336	641	21	250	36	21		10												
Turkey	11765	12903	448	1152	107	213																1137
Ukraine		22																				920
United Kingdom	2461	1751	1939	763	981	2772	29026	27890	33647	2731	1224	1415										
Yugoslavia																						19
ASIA:																						
Bangladesh	1926			57549	11980																	
China (Mainland)				28134	68690	38257					21											
Hong Kong				434	520	147																70
India	4902	1525		104961	64905	73406					2											
Indonesia					675	1116																
Israel	1185	3997	1419	66	856					43												258
Iran		221		298																		427
Iraq																						200
Japan	188	104		25454	7837	27738																501
Jordan	368	746		64	64	105				303	98											2000
Korea		2720		2154	568	270				1152	1006											2366
Kuwait	213	236	171	21	4																	2252
Lebanon	4612	3651	1643	79	63																	3319
Malaysia				128	949	1732																1589
Nepal				149																		428
Oman																						19
Pakistan	4303	216		8683	1192	14533																19
Philippines				2922	9477	3947				19												64
Saudi Arabia	998	1363	318	2973	2150	910				2845	788											1745
Sri Lanka	1781	3241		498	1349	266																372
Taiwan				7400	5452	4410																367
Thailand				620	572	1061																20
United Arab Emirates	5128	1091	427	658	172	470																124
Viet-Nam, South	21																					38
Yemen				1102	401	256																162
OCEANIA:																						
Australia	147	194	21	7255		22																456
New Zealand	4			16																		171
AFRICA:																						
Algeria	47454	21251	20427	4730	319																	597
Angola		583																				21
Cameroon																						630
Cape Verde																						384
Egypt	14148		3439	3042	43																	405
Ethiopia				363	500																	27

CANADIAN EXPORTS BY COUNTRY OF DESTINATION

(Data in Metric Tons, Calander Year)

Country	Lentils		Peas				Pea Beans		Other Beans			
	1998	1997	1996	1995	1994	1993	1992	1991	1990	1989	1988	
Fr. Indian Ocean Areas											247	20
Guinea	880	360										
Kenya	1551	67	2138	1892	746	544						
Liberia	1013	180										
Libya	64	10									10	
Malawi							156			980	60	20
Mauritius	854	1008	1316	31	64	31			83		10	85
Morocco	9402	4274	1645	3197	818	20	102	167	19	85		
Mozambique										480	20	1680
Rwanda		700		680				2496			811	
Sierra Leone	1038	365									101	
Somalia		500			149							
So. Africa, Rep of	1425	1634	1266	2802	5828	3381	517		502	380	561	1134
Tanzania	2880	64	720	1891				640			80	
Tunisia				150								
Uganda		21										
Zaire			154	64								
Zimbabwe							21			43		
Others	1392	12704		213	3					457	3	
Total	369614	300447	252591	956010	830922	734799	59170	49531	62044	103032	82784	51710

Source: Agriculture & Agri-Food Canada

USDA/CCC Purchases of Dry Edible Beans, Peas, & Lentils Under PL480 Program for Export Distribution (MT)

CLASS	FY98	FY97	FY96	FY95	FY94	FY93
Pea Bean	5,070	4,860	2,050	1,290	28,270	4,110
Pinto	9,220	12,238	21,688	64,422	55,320	24,930
Great Northern	230	0	0	0	0	5,170
Small Red	4,120	810	4,983	2,542	7,185	4,500
Black	370	110	420	460	1,390	6,960
Light Red Kidney	610	0	420	1,080	1,020	0
Dark Red Kidney	2,390	4,710	1,261	2,133	1,214	0
Lentil	17,510	18,580	20,640	33,660	37,780	37,060
Green Pea	41,420	33,770	48,400	41,045	27,600	13,500
Yellow Pea	8,900	4,041	3,510	5,570	0	1,890
Small White	0	0	0	210	0	0
Pink	0	0	120	0	0	0
TOTAL	89,840	79,119	103,492	152,412	159,779	98,120

**USDA Purchases of Canned Dry Beans, Peas and Lentils for Use
in Various Domestic Feeding Programs (1,000 pounds)**

Class	Oct 97-Sep 98	Oct 96-Sep 97	Oct 95-Sep 96	Oct 94-Sep 95	Oct 93-Sep 94	Oct 92-Sep 93
Baby Lima	0	350	315	524	455	1,108
Blackeye	665	490	140	735	665	1,182
Black	105	105	0	140	0	0
Garbanzo	735	420	70	245	3,079	259
Great Northern	665	385	385	315	1,485	1,071
Green Pea	0	0	13,959	12,110	9,964	18,439
Red Kidney	0	1,295	2,449	1,750	1,680	2,216
Pigeon Pea	0	0	0	0	356	734
Pink	0	875	1,190	1,715	1,865	2,696
Pinto	10,253	3,800	7,278	7,733	5,459	5,984
Refried Bean	7,836	4,902	4,935	5,080	7,198	15,888
Small Red	0	490	980	3,079	2,869	1,847
Vegetarian Bean	22,894	22,509	20,475	18,523	18,949	22,367
Total	43,153	35,621	52,175	49,949	52,024	73,791

**USDA Purchases of Dry Edible Beans, Peas and Lentils for Use
in Various Domestic Feeding Programs (1,000 pounds)**

Class	Oct 97-Sep 98	Oct 96-Sep 97	Oct 95-Sep 96	Oct 94-Sep 95	Oct 93-Sep 94	Oct 92-Sep 93
Baby Lima	363	1,613	726	564	645	242
Blackeye	1,613	1,532	363	1,371	161	202
Garbanzo	0	0	0	40	0	0
Great Northern	2,500	3,709	1,813	2,136	3,386	4,636
Green Pea	0	0	40	40	0	0
Green Split Pea	0	0	40	282	161	40
Lentil	0	0	40	81	0	81
Pea Bean	16,775	0	0	363	81	40
Pink	0	0	160	0	0	0
Pinto	16,155	22,120	14,500	12,692	7,784	9,144
Red Kidney	1,169	1,815	1,048	1,613	4,838	1,732
Small Red	0	0	0	40	645	242
Small White	0	0	40	40	0	0
Total	38,575	30,789	18,770	19,262	17,701	16,359

Source: Fruit and Vegetable Division, USDA

WORLD PULSE PRODUCTION (1,000 Metric Tons)***

COUNTRY	1998	1997	1996	1995	1994	COUNTRY	1998	1997	1996	1995	1994
WORLD	56786	55832	55162	55997	57782	ASIA	27157	26356	27121	27481	26977
AFRICA	7566	7437	7433	7257	6933	Armenia	5	5	5	4	4
Algeria	27	28	52	41	38	Bangladesh	508	518	527	532	533
Angola	86	86	175	170	162	China	4713	4203	4914	5511	6113
Benin	84	84	69	76	71	India	14520	14520	14090	14820	14317
Botswana	9	11	14	10	14	Indonesia	872	872	862	310	259
Burkina Faso	66	66	62	62	74	Iran	580	567	650	650	640
Burundi	316	311	327	358	259	Japan	133	133	133	103	112
Cameroon	97	97	97	91	86	Kazakhstan	14	19	40	55	80
Congo	222	229	234	242	240	Korea	306	306	306	300	200
Egypt	586	537	509	362	386	Myanmar	1188	1188	1289	1029	838
Ethiopia	1158	1138	1138	1108	954	Nepal	221	231	226	210	196
Eritrea	33	33	33	45	38	Pakistan	1200	1024	1099	781	824
Guinea	60	60	60	60	60	Syria	296	190	250	259	188
Kenya	250	240	240	270	254	Tajikistan	5	5	6	6	6
Madagascar	84	82	80	80	74	Thailand	357	333	370	365	381
Mali	71	71	82	88	87	Turkey	1683	1694	1832	1824	1679
Malawi	284	280	276	276	272	Vietnam	210	210	216	216	220
Morocco	213	245	257	118	285	Yemen	66	66	67	70	68
Mozambique	191	153	141	134	95	EUROPE	9722	10186	8801	5811	6970
Niger	428	428	428	433	433	Austria	84	86	102	77	160
Nigeria	1700	1700	1700	1850	1721	Belarus	372	482	310	173	140
Rwanda	130	128	117	130	132	Bosnia Herzg	15	15	16	17	16
South Africa	57	82	78	72	87	Bulgaria	43	43	29	52	45
Sudan	175	167	126	107	115	Croatia	24	24	24	23	24
Tanzania	412	375	328	378	302	Czech Rep	105	105	139	137	183
Togo	52	53	49	34	25	Denmark	387	387	275	300	382
Tunisia	92	72	105	79	77	Estonia	24	17	13	6	1
Uganda	346	351	359	510	498	France	3383	3121	2619	2792	3850
Zaire				200	198	Germany	587	587	215	215	201
Zimbabwe	46	48	45	43	49	Greece	44	44	44	41	44
NORTH AND CENTRAL AMERIC	6898	5772	5376	5797	5697	Hungary	152	142	112	130	144
Canada	2851	2313	1819	2090	2077	Italy	145	145	156	174	168
Dominican Rep	62	55	76	79	90	Latvia	12	8	8	6	6
El Salvador	73	67	58	51	61	Lithuania	43	43	50	35	30
Guatemala	120	118	117	122	113	Macedonia	28	28	27	26	25
Haiti	90	88	85	63	88	Moldova Rep	58	58	37	65	70
Honduras	51	55	55	38	73	Poland	291	277	277	250	215
Mexico	1704	1205	1542	1428	1509	Portugal	36	38	38	44	44
Nicaragua	85	71	75	88	74	Romania	72	75	77	97	76
USA	1803	1734	1481	1769	1556	Russian Fed	999	1800	1800	1435	2673
SOUTH AMERICA	3125	3903	3742	3878	4266	Slovakia	102	98	129	147	187
Argentina	356	338	284	307	265	Slovenia	5	5	7	6	9
Brazil	2204	3015	2847	3941	3396	Spain	383	390	282	155	212
Chile	89	74	115	92	91	Sweden	243	169	122	81	67
Colombia	140	140	161	217	194	UK	674	674	558	721	721
Ecuador	57	75	63	55	55	Ukraine	1173	1075	1122	1518	2638
Paraguay	75	75	80	72	56	Yugoslavia	142	142	142	113	107
Peru	135	135	141	126	122	OCEANIA	2330	2176	2688	2464	1287
						Australia	2269	2120	2624	2361	1216
						New Zealand	56	51	59	76	66

*** . Latest information available

Source: FAO United Nations

WORLD DRY BEAN PRODUCTION (1,000 Metric Tons)***

COUNTRY	1998	1997	1996	1995	1994	COUNTRY	1998	1997	1996	1995	1994
WORLD	17353	17354	18537	17944	17938	ASIA	8308	8086	9547	8339	8799
AFRICA	2067	2044	2092	2068	1813	Armenia	5	5	5	4	3
Angola	86	66	175	34	34	Bangladesh	85	66	84	87	85
Benin	74	74	59	63	63	China	1513	1313	1591	1411	1511
Burundi	280	271	288	319	332	India	3600	3600	4683	3900	4420
Cameroon	91	91	91	72	72	Indonesia	870	870	860	810	850
Chad	24	24	15	17	12	Iran	140	140	140	150	150
Congo	146	149	155	154	153	Japan	130	130	130	100	109
Egypt	25	24	23	14	12	Kazakhstan	3	3	12	20	22
Ethiopia	410	400	400	390	270	Korea D P Rep	270	270	270	250	300
Lesotho	8	14	7	5	3	Korea Rep	29	29	28	19	19
Madagascar	72	70	68	50	50	Myanmar	844	844	935	966	612
Malawi	90	89	85	87	84	Nepal	25	25	25	25	17
Morocco	8	8	8	8	5	Pakistan	115	115	118	110	107
Rwanda	120	120	105	118	120	Philippines	35	35	35	32	32
South Africa	42	67	63	57	64	Sri Lanka	21	21	20	20	22
Sudan	12	11	8	7	15	Thailand	238	212	250	240	258
Tanzania	250	230	260	230	190	Turkey	235	235	230	225	180
Togo	46	47	43	29	22	Viet Nam	110	110	115	115	110
Uganda	220	221	234	387	378	EUROPE	594	672	567	568	488
Zimbabwe	43	45	42	40	46	Albania	21	21	23	20	18
NORTH AND CENTRAL AMERICA	3480	2850	3143	3317	3306	Belarus	155	205	129	75	51
Belize	5	5	3	3	3	Bosnia Herzg	13	13	13	14	13
Canada	161	161	117	200	171	Bulgaria	25	25	19	35	30
Costa Rica	14	22	23	45	40	Croatia	21	21	20	20	21
Cuba	18	18	18	18	17	France	10	10	10	10	10
Dominican Rep	30	28	37	37	37	Greece	24	24	25	23	24
El Salvador	73	67	58	51	61	Ireland	17	17	17	17	17
Guatemala	84	82	115	100	91	Italy	22	22	24	27	28
Haiti	50	50	49	30	50	Latvia	3	2	1	1	1
Honduras	51	55	55	38	41	Macedonia	11	11	11	12	12
Mexico	1475	965	1349	1278	1364	Moldova	27	27	14	15	15
Nicaragua	85	71	75	80	84	Netherlands	5	5	8	5	5
Panama	5	5	5	6	6	Poland	48	43	41	101	66
USA	1409	1323	1268	1406	1324	Portugal	15	14	15	16	15
SOUTH AMERICA	2888	3664	3485	3565	3959	Romania	47	47	42	42	37
Argentina	299	281	227	240	198	Russian Fed	2	3	5	4	5
Bolivia	12	12	12	13	9	Slovenia	2	2	4	4	7
Brazil	2178	2990	2822	2913	3368	Spain	22	27	37	34	33
Chile	52	37	66	56	54	Ukraine	18	46	40	42	32
Colombia	139	139	160	160	137	Yugoslavia	69	69	60	70	62
Ecuador	41	41	42	33	39	OCEANIA	38	37	50	50	23
Paraguay	68	68	52	46	46	Australia	38	37	50	50	23
Peru	61	61	69	60	63						
Uruguay	3	3	3	3	3						
Venezuela	32	32	31	42	42						

*** - Latest information available
Source: FAO United Nations

WORLD GARBANZO (CHICK-PEA) PRODUCTION (1,000 Metric Tons)***

COUNTRY	1998	1997	1996	1995	1994	COUNTRY	1998	1997	1996	1995	1994
WORLD	8829	8633	7947	8016	7055	ASIA	8010	7876	7098	7307	6502
AFRICA	296	272	293	265	283	Bangladesh	60	61	62	60	62
Algeria	16	16	24	16	15	China	5	3	3	3	2
Egypt	9	9	11	12	11	India	6000	6000	5020	5406	4904
Eritrea	1	1	1	1	1	Iran	280	267	350	340	299
Ethiopia	128	127	127	126	122	Iraq	8	8	8	9	9
Malawi	40	39	39	39	38	Israel	7	7	9	6	8
Morocco	40	40	29	12	47	Jordan	2	2	3	2	2
Sudan	9	8	8	5	3	Kazakhstan	1	1	5	10	15
Tanzania	22	21	30	22	15	Lebanon	11	11	10	10	10
Tunisia	28	8	30	9	6	Myanmar	90	90	121	77	60
Uganda	3	3	3	3	3	Nepal	14	14	14	16	14
NORTH AND CENTRAL AME	190	201	223	116	80	Pakistan	774	694	680	559	411
Mexico	190	201	223	116	80	Syria	96	59	46	53	36
SOUTH AMERICA	8	8	15	26	25	Turkey	625	720	732	730	650
Argentina	2	2	2	2	2	Yemen	36	36	36	38	37
Chile	4	4	10	11	10	EUROPE	85	85	111	48	77
Colombia					5	Bulgaria	4	4	2	4	2
Peru	2	2	2	2	3	Greece	2	2	2	2	2
						Italy	3	3	3	3	4
						Portugal	9	9	8	9	9
						Spain	66	66	96	31	55
						OCEANIA	240	191	278	258	65
						Australia	240	191	278	258	65

*** - Latest information available

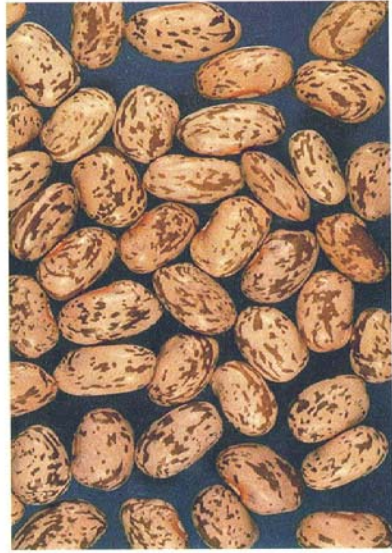
Source: FAO United Nations

WORLD PEA PRODUCTION (1,000 Metric Tons)***

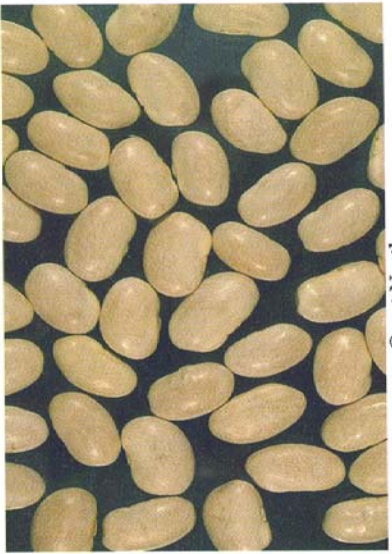
COUNTRY	1998	1997	1996	1995	1994	COUNTRY	1998	1997	1996	1995	1994
WORLD	12932	12353	10851	11535	14654						
AFRICA	354	353	379	335	309						
Algeria	1	1	5	3	3	Japan	1	1	1	1	1
Burundi	24	37	36	37	24	Kazakhstan	11	15	23	24	43
Congo, D R	65	68	70	73	72	Myanmar	30	30	27	25	21
Congo, Rep	4	4	4	4	4	Pakistan	82	79	78	74	74
Egypt	3	3	3	4	3	Turkey	4	4	4	4	4
Eritrea	1	1	1		1						
Ethiopia	165	160	160	150	120	EUROPE	7363	7530	6370	4017	5177
Lesotho	3	3	4	2	1	Austria	80	80	93	60	134
Morocco	16	16	28	4	29	Belarus	217	280	181	112	104
Rwanda	10	8	12	12	13	Bel-Lux	9	9	9	15	15
South Africa	2	2	2	3	4	Bulgaria	12	12	8	14	12
Tanzania	25	22	30	22	15	Croatia	1	1	1		
Tunisia	3	3	10	2	2	Czech Rep	93	93	127	130	149
Uganda	18	20	17	16	17	Denmark	384	384	257	400	377
NORTH AND CENTRAL AMERICA	2610	2067	1402	1687	1587	Estonia	18	11	13	6	1
Canada	2300	1762	1245	1455	1441	Finland	13	13	13	11	14
Jamaica	2	2	3	4	5	France	3311	3052	2552	2698	3777
Mexico	2	2	2	2	3	Germany	399	399	30	21	12
USA	305	300	151	223	139	Greece					
SOUTH AMERICA	75	75	78	116	112	Hungary	140	130	101	143	134
Argentina	30	30	30	31	39	Ireland	2	2	2	2	2
Bolivia	4	4	4	4	5	Italy	15	15	12	20	23
Chile	3	3	3	4	4	Latvia	9	6	6	5	5
Colombia					10	Lithuania	19	19	26	24	20
Ecuador	7	7	9	4	4	Macedonia	2	2	2	2	2
Paraguay	1	1	2	2	2	Moldova Rep	31	31	19	40	52
Peru	26	26	25	25	20	Netherlands	5	5	8	5	11
Uruguay	3	3	3	3	3	Poland	63	55	67	57	53
Venezuela				1	1	Romania	24	27	34	54	38
ASIA	2135	1975	2045	2068	2247	Russian Fed	775	1419	1408	1212	2287
Bangladesh	14	14	29	26	25	Slovakia	82	58	89	108	160
China	1240	1060	1300	1000	1275	Slovenia	2	2	2	1	1
India	740	740	580	600	561	Spain	73	70	5	4	8
						Sweden	188	114	40	22	10
						UK	297	297	240	267	267
						Ukraine	1085	901	985	1376	2470
						Yugoslavia	21	21	24	20	22
						OCEANIA	395	353	576	537	278
						Australia	340	303	530	465	215
						New Zealand	55	50	46	72	60

*** - Latest information available

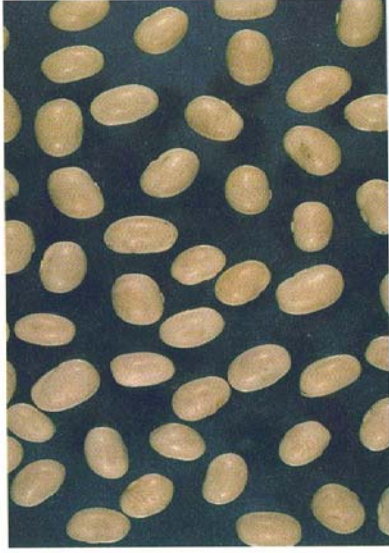
Source: FAO United Nations



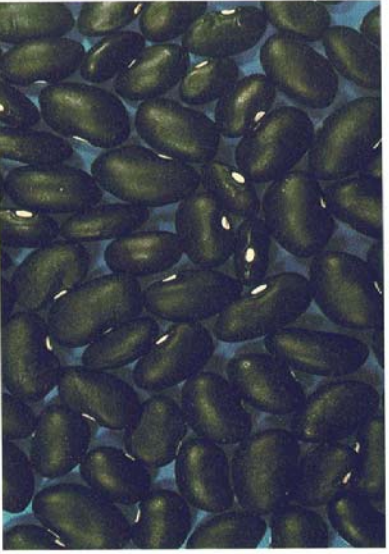
Pinto



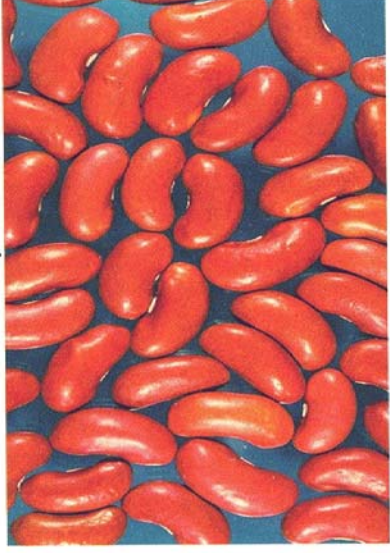
Great Northern



Navy



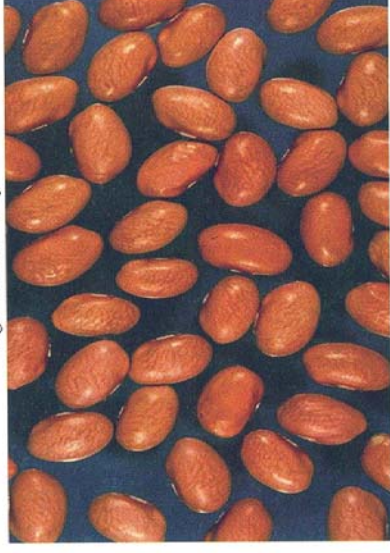
Black



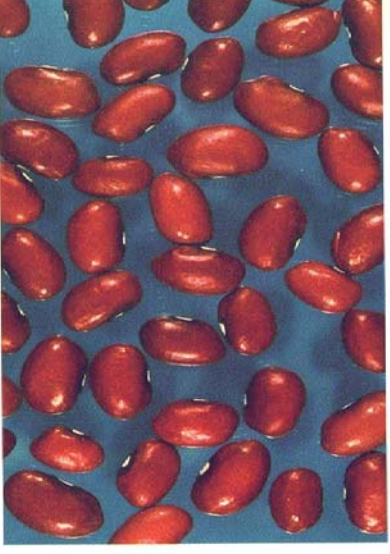
Light Red Kidney



Anasazi



Pink



Small Red