

Bean Market News 1999 Summary



USDA Agricultural Marketing Service



USDA - AMS, LIVESTOCK AND GRAIN MARKET NEWS

711 "O" Street
Greeley, Colorado 80631
Telephone: (970) 353-9750 FAX: (970) 353-9790
Internet Access: WWW.AMS.USDA.GOV



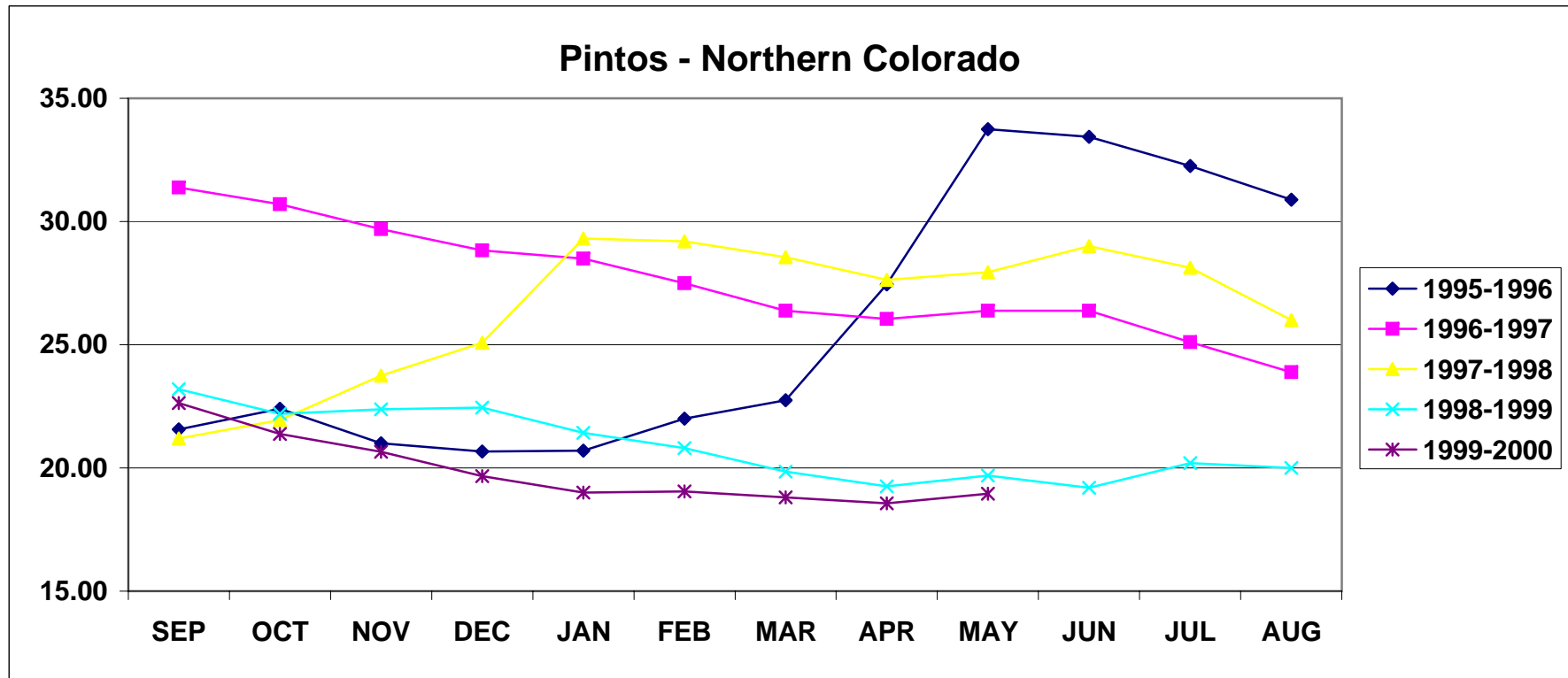
TABLE OF CONTENTS

Dealer Price Trends - Graphs.....	1-4
Pinto - Northern Colorado.....	1
Pinto - North Dakota/Minnesota.....	2
Pea Bean - Michigan.....	3
Great Northern - Western Nebraska/Eastern Wyoming.....	4
 Monthly Average Prices.....	 5-14
Dealer - Pinto, Great Northern, Small Red, Pink.....	5
Grower - Pinto, Great Northern, Small Red, Pink.....	6
Dealer - Black, Cranberry, Light Red Kidney.....	7
Grower - Black, Cranberry, Light Red Kidney.....	8
Dealer - Small White, Pea Bean, Dark Red Kidney.....	9
Grower - Small White, Pea Bean, Dark Red Kidney.....	10
Dealer - Austrian Winter Pea, Lentil, Green Pea Split and Whole, Yellow Pea Split and Whole.....	11
Grower - Austrian Winter Pea, Lentil, Green Pea Split and Whole, Yellow Pea Split and Whole.....	12
Dealer - Light Red Kidney, Baby Lima, Large Lima, Blackeye, Pink, Garbanzo (California).....	13
Grower - Light Red Kidney, Baby Lima, Large Lima, Blackeye, Pink, Garbanzo (California).....	14
 Dry Edible Beans, U.S. Production by Commercial Class FY Total and Canadian Crop Production.....	 15
 Dry Edible Beans, Production by Commercial Class by State.....	 16-17
 Dry Bean, Pea, and Lentil Production - USDA, NASS.....	 18
 Dry Pea and Lentil Production - USADPLC.....	 19
 Dry Bean, U.S. Exports by Country of Destination.....	 20-21

Dry Pea, U.S. Exports by Country of Destination.....	22-23
U.S. Exports, Dry Beans and Dry Ripe Peas FY Totals.....	24
U.S. Exports, by Month, Dry Beans - Graphs.....	25-28
Pea Bean, Great Northern, Large Lima, Baby Lima.....	25
Light Red Kidney, Dark Red Kidney, Pinto, Black.....	26
Seed Beans, Small Reds, White n.e.c., Beans n.e.c.....	27
Green Pea, Lentil, Seed Pea, Yellow Pea.....	28
Canadian Exports by Country of Destination.....	29-31
USDA/CCC Purchases of Dry Edible Beans, Peas, and Lentils.....	31
USDA/F&V Purchases for Domestic Feeding Programs.....	32
World Pulse Production.....	33
World Dry Bean Production.....	34
World Garbanzo Production.....	35
World Pea Production.....	36

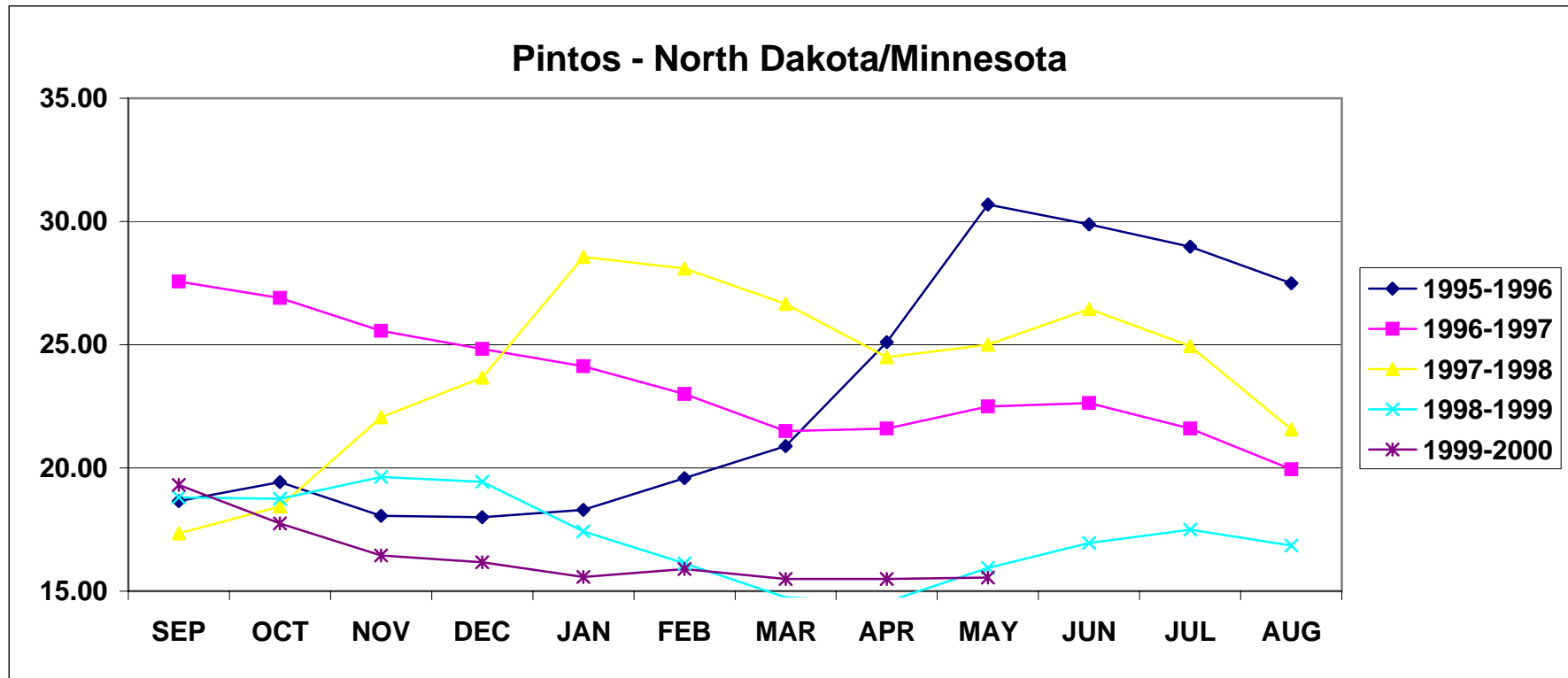
**Dealer Monthly Average Price
Per Cwt By Crop Year Fob
PINTOS - NORTHERN COLORADO**

	SEP	OCT	NOV	DEC	JAN	FEB	MAR	APR	MAY	JUN	JUL	AUG	AVG
1995-1996	21.56	22.40	21.00	20.67	20.70	22.00	22.75	27.45	33.75	33.44	32.25	30.88	25.74
1996-1997	31.38	30.70	29.69	28.83	28.50	27.50	26.38	26.05	26.38	26.38	25.10	23.88	27.56
1997-1998	21.20	21.94	23.75	25.08	29.31	29.19	28.55	27.63	27.94	29.00	28.13	26.00	26.48
1998-1999	23.20	22.19	22.38	22.45	21.42	20.81	19.85	19.25	19.69	19.20	20.19	20.00	20.89
1999-2000	22.63	21.38	20.65	19.67	19.00	19.05	18.81	18.56	18.95				19.86



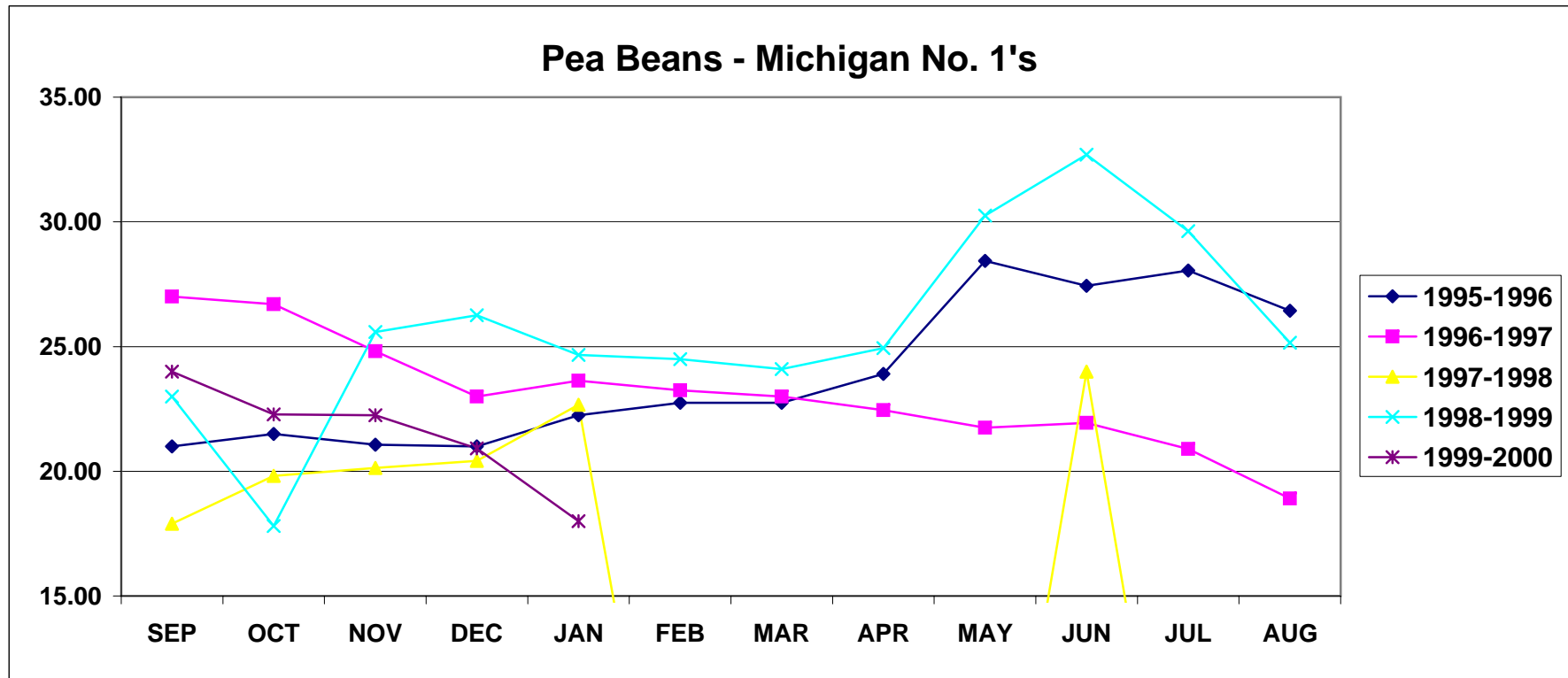
Dealer Monthly Average Price
Per Cwt By Crop Year Fob
PINTOS - NORTH DAKOTA/MINNESOTA

	SEP	OCT	NOV	DEC	JAN	FEB	MAR	APR	MAY	JUN	JUL	AUG	AVG
1995-1996	18.66	19.43	18.06	18.00	18.30	19.59	20.88	25.10	30.69	29.88	28.98	27.50	22.92
1996-1997	27.56	26.90	25.56	24.83	24.13	23.00	21.50	21.60	22.50	22.63	21.60	19.94	23.48
1997-1998	17.34	18.44	22.06	23.67	28.56	28.09	26.65	24.50	25.00	26.45	24.94	21.56	23.94
1998-1999	18.80	18.75	19.63	19.44	17.42	16.13	14.75	14.56	15.94	16.95	17.50	16.85	17.23
1999-2000	19.31	17.75	16.45	16.17	15.58	15.90	15.50	15.50	15.55				16.41



**Dealer Monthly Average Price
Per Cwt By Crop Year Fob
PEA BEANS - MICHIGAN No. 1's**

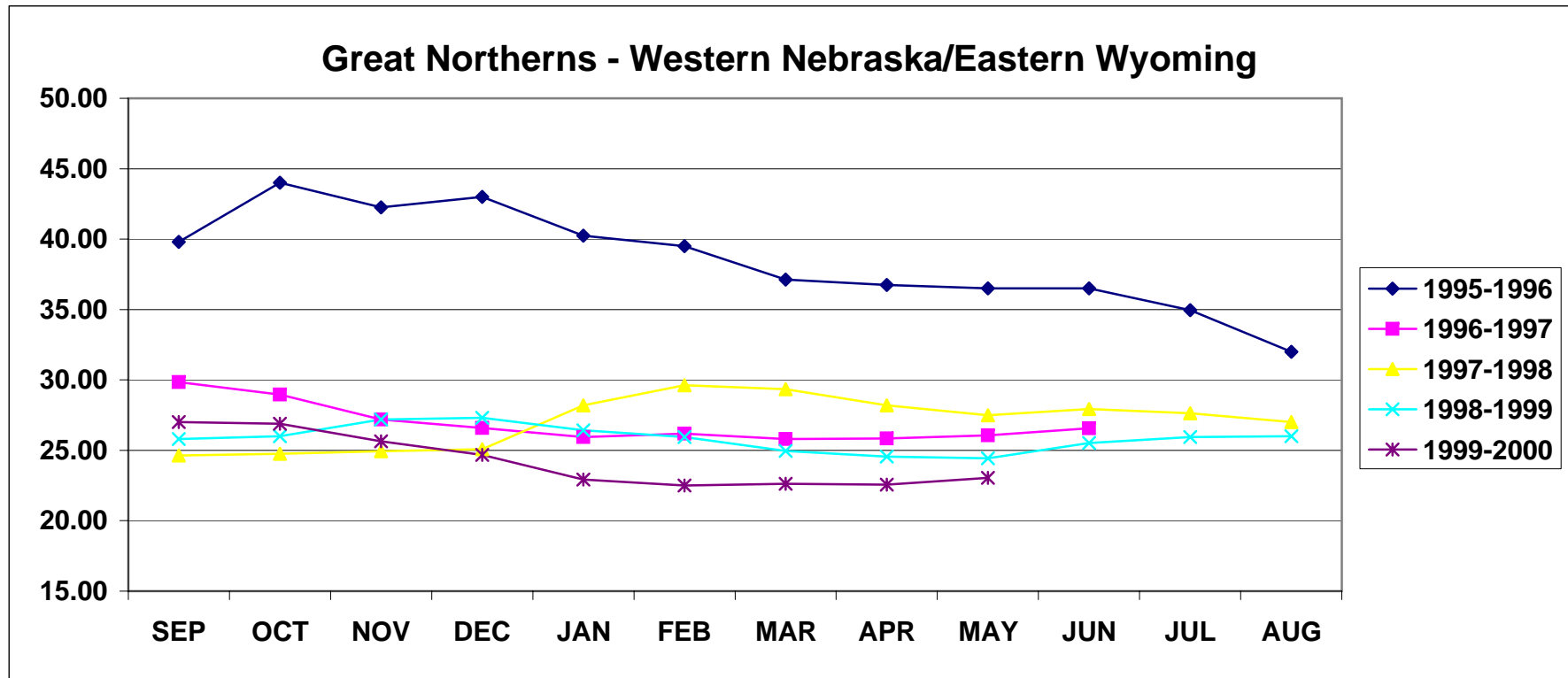
	SEP	OCT	NOV	DEC	JAN	FEB	MAR	APR	MAY	JUN	JUL	AUG	AVG
1995-1996	21.00	21.50	21.06	21.00	22.25	22.75	22.75	23.90	28.44	27.44	28.05	26.44	23.88
1996-1997	27.00	26.70	24.81	23.00	23.63	23.25	23.00	22.45	21.75	21.94	20.90	18.91	23.11
1997-1998	17.90	19.81	20.13	20.42	22.67	NE	NE	NE	NE	24.00	NE	NE	20.82
1998-1999	23.00	17.81	25.58	26.25	24.67	24.50	24.10	24.94	30.25	32.70	29.63	25.15	25.72
1999-2000	24.00	22.28	22.25	20.92	18.00	18.00	16.53	17.00					19.87



**Dealer Monthly Average Price
Per Cwt By Crop Year Fob**

GREAT NORTHERNS - WESTERN NEBRASKA/EASTERN WYOMING

	SEP	OCT	NOV	DEC	JAN	FEB	MAR	APR	MAY	JUN	JUL	AUG	AVG
1995-1996	39.81	44.00	42.25	43.00	40.25	39.50	37.13	36.75	36.50	36.50	34.95	32.00	38.55
1996-1997	29.84	28.95	27.19	26.58	25.94	26.19	25.81	25.85	26.06	26.56	25.60	24.75	26.61
1997-1998	24.63	24.75	24.94	25.08	28.19	29.63	29.35	28.19	27.50	27.93	27.63	27.00	27.07
1998-1999	25.80	26.00	27.19	27.31	26.42	25.94	24.95	24.56	24.44	25.53	25.94	26.00	25.84
1999-2000	27.00	26.88	25.65	24.67	22.92	22.50	22.63	22.56	23.05				24.21



**Dealer Monthly Average Price
Per Cwt By Crop Year Fob**

	SEP	OCT	NOV	DEC	JAN	FEB	MAR	APR	MAY	JUN	JUL	AUG	AVG
PINTO - Northern Colorado													
1995-1996	21.56	22.40	21.00	20.67	20.70	22.00	22.75	27.45	33.75	33.44	32.25	30.88	25.74
1996-1997	31.38	30.70	29.69	28.83	28.50	27.50	26.38	26.05	26.38	26.38	25.10	23.88	27.56
1997-1998	21.20	21.94	23.75	25.08	29.31	29.19	28.55	27.63	27.94	29.00	28.13	26.00	26.48
1998-1999	23.20	22.19	22.38	22.45	21.42	20.81	19.85	19.25	19.69	19.20	20.19	20.00	20.89
1999-2000	22.63	21.38	20.65	19.67	19.00	19.05	18.81	18.56	18.95				19.86
PINTO - North Dakota/Minnesota													
1995-1996	18.66	19.43	18.06	18.00	18.30	19.59	20.88	25.10	30.69	29.88	28.98	27.50	22.92
1996-1997	27.56	26.90	25.56	24.83	24.13	23.00	21.50	21.60	22.50	22.63	21.60	19.94	23.48
1997-1998	17.28	18.44	16.50	23.67	28.56	28.09	26.65	24.50	25.00	26.45	24.94	21.56	23.47
1998-1999	18.80	18.75	19.63	19.44	17.42	16.13	14.75	14.56	15.94	16.95	17.50	16.85	17.23
1999-2000	19.31	17.75	16.45	16.17	15.58	15.90	15.50	15.50	15.55				16.41
PINTO - Idaho													
1995-1996	21.69	22.90	22.25	21.83	21.75	22.63	23.25	27.45	34.13	33.94	33.30	31.50	26.39
1996-1997	31.75	31.40	30.50	30.00	29.06	29.13	28.56	27.85	27.94	28.44	28.30	26.88	29.15
1997-1998	24.50	24.08	25.00	26.08	30.00	30.63	29.45	27.75	27.88	29.80	28.63	26.50	27.53
1998-1999	24.60	24.25	24.13	23.50	22.83	21.94	21.50	20.75	20.88	20.75	20.56	20.90	22.22
1999-2000	23.50	23.00	22.30	21.58	20.75	21.05	21.00	20.75	20.65				21.62
GREAT NORTHERN - Western Nebraska/Eastern Wyoming													
1995-1996	39.81	44.00	42.25	43.00	40.25	39.50	37.13	36.75	36.50	36.50	34.95	32.00	38.55
1996-1997	29.84	28.95	27.19	26.58	25.94	26.19	25.81	25.85	26.06	26.56	25.60	24.75	26.61
1997-1998	24.63	24.75	24.94	25.08	28.19	29.63	29.35	28.19	27.50	27.93	27.63	27.00	27.07
1998-1999	25.80	26.00	27.19	27.31	26.42	25.94	24.95	24.56	24.44	25.53	25.94	26.00	25.84
1999-2000	27.00	26.88	25.65	24.67	22.92	22.50	22.63	22.56	23.05				24.21
SMALL RED - Southern Idaho													
1995-1996	26.94	26.55	26.63	26.50	27.00	26.75	26.44	28.25	31.50	32.50	33.40	34.00	28.87
1996-1997	34.63	36.60	38.44	38.75	40.38	40.19	40.19	40.35	40.44	40.63	40.95	40.13	39.31
1997-1998	30.00	28.50	28.31	28.25	28.38	28.75	28.25	27.63	27.69	27.80	27.31	27.09	28.16
1998-1999	26.80	26.88	28.75	31.38	29.08	28.50	27.23	26.69	26.63	25.95	26.38	26.15	27.54
1999-2000	25.88	24.63	23.40	23.00	22.25	22.15	21.50	18.13	19.90				22.32
PINK - Southern Idaho													
1995-1996	24.88	25.80	25.75	25.75	25.95	25.88	25.88	28.20	31.50	32.25	32.95	33.50	28.19
1996-1997	33.75	33.50	33.63	33.25	32.94	32.50	31.88	30.95	30.92	30.56	30.10	30.25	32.02
1997-1998	28.30	28.13	28.31	28.50	29.13	29.50	28.90	28.56	28.50	28.75	28.81	29.00	28.70
1998-1999	28.20	27.50	27.75	27.63	27.50	27.50	27.40	27.25	26.75	26.30	26.25	25.60	27.14
1999-2000	25.00	24.19	23.45	22.67	22.25	21.75	20.75	20.13	20.20				22.27

NE=Not Established

Grower Monthly Average Price Per Cwt By Crop Year Fob

	SEP	OCT	NOV	DEC	JAN	FEB	MAR	APR	MAY	JUN	JUL	AUG	AVG
PINTO - Northern Colorado													
1995-1996	16.25	16.60	15.00	15.00	15.20	16.50	18.00	21.80	26.88	27.00	25.80	24.75	19.90
1996-1997	24.75	22.80	22.50	21.33	20.25	20.00	19.25	18.50	18.75	19.38	18.40	17.50	20.28
1997-1998	15.50	15.25	17.38	19.00	21.50	22.38	21.80	21.00	20.50	21.00	21.00	19.75	19.67
1998-1999	16.60	16.00	16.00	16.00	14.83	13.94	13.65	13.31	13.25	13.25	14.13	13.90	14.57
1999-2000	17.13	15.47	15.00	13.50	13.00	13.00	13.00	13.00	13.00				14.01
PINTO - North Dakota/Minnesota													
1995-1996	14.13	15.10	14.00	14.00	14.10	15.38	16.44	20.00	24.88	25.00	25.00	24.63	18.56
1996-1997	22.88	22.20	20.50	20.33	19.25	18.50	17.88	16.50	17.25	17.63	17.30	16.00	18.85
1997-1998	13.30	13.81	16.25	18.00	21.50	21.88	20.60	20.44	20.25	21.20	20.63	18.25	18.84
1998-1999	14.50	13.88	14.88	14.63	13.00	11.94	11.00	10.75	11.00	12.25	13.06	12.35	12.77
1999-2000	15.00	13.50	12.50	11.50	11.00	11.00	10.63	10.50	10.50				11.79
PINTO - Idaho													
1995-1996	17.13	17.00	16.50	16.00	16.20	17.50	18.50	22.00	26.75	27.00	27.00	25.00	20.55
1996-1997	25.00	25.20	23.00	22.83	23.00	23.00	21.13	20.50	20.50	21.00	20.60	19.75	22.13
1997-1998	17.80	18.00	18.63	20.00	22.50	23.75	22.80	22.13	22.00	22.60	21.50	21.00	21.06
1998-1999	17.25	17.00	17.13	17.13	16.00	15.00	15.00	15.00	14.50	14.50	14.50	14.50	15.63
1999-2000	17.38	17.63	16.90	15.83	15.50	15.40	14.50	14.50	14.90				15.84
GREAT NORTHERN - Western Nebraska/Eastern Wyoming													
1995-1996	27.75	30.00	29.00	29.00	29.00	29.00	26.00	25.70	26.00	26.00	24.80	24.00	27.19
1996-1997	22.75	19.60	18.88	18.17	17.13	17.00	18.00	18.40	18.00	18.25	18.20	17.50	18.49
1997-1998	17.00	17.00	17.00	17.00	18.50	19.13	20.00	20.00	20.63	20.00	20.00	20.00	18.86
1998-1999	18.10	17.00	17.63	18.00	17.50	16.88	16.00	16.00	16.25	17.00	17.00	17.00	17.03
1999-2000	18.44	16.72	16.58	15.50	14.83	15.00	15.00	15.00	15.60				15.85
SMALL RED - Southern Idaho													
1995-1996	19.63	19.90	19.75	19.50	19.40	19.38	19.75	20.30	22.88	24.63	25.00	25.00	21.26
1996-1997	25.50	26.00	26.38	27.50	28.00	29.50	30.50	29.40	30.00	30.25	30.40	30.00	28.62
1997-1998	20.20	21.00	20.75	21.00	21.00	21.25	21.30	21.00	21.00	21.00	21.00	21.00	20.96
1998-1999	19.20	18.88	19.50	19.88	19.83	20.00	20.00	20.00	19.00	18.60	18.88	18.00	19.31
1999-2000	17.25	17.63	16.90	14.67	14.17	14.00	14.00	13.75	13.20				15.06
PINK - Southern Idaho													
1995-1996	18.00	18.00	18.00	18.00	18.00	18.38	18.75	20.10	22.88	23.88	24.00	24.25	20.19
1996-1997	25.33	25.60	26.00	26.00	26.00	26.00	26.00	25.10	25.00	25.13	24.50	24.25	25.41
1997-1998	20.50	21.00	21.00	21.00	22.00	22.25	22.00	22.00	22.00	22.00	22.00	NE	21.61
1998-1999	19.63	18.38	18.38	19.00	19.00	18.13	18.50	18.50	18.63	18.00	18.50	18.30	18.58
1999-2000	16.25	16.13	15.50	14.83	13.83	13.50	13.50	13.50	13.50				14.50

**Dealer Monthly Average Price
Per Cwt By Crop Year Fob**

	SEP	OCT	NOV	DEC	JAN	FEB	MAR	APR	MAY	JUN	JUL	AUG	AVG
BLACK - Michigan													
1995-1996	20.25	20.20	19.19	19.00	18.55	19.00	20.13	22.45	29.88	28.81	28.85	28.00	22.86
1996-1997	27.50	27.05	26.81	26.50	26.81	28.25	28.19	28.25	28.50	28.06	25.85	23.19	27.08
1997-1998	20.55	22.63	27.94	31.83	38.63	38.88	35.15	35.50	38.00	42.75	NE	NE	33.19
1998-1999	29.50	32.25	34.88	35.50	32.67	30.50	NE	22.50	24.50	24.15	24.06	23.60	28.56
1999-2000	21.44	20.50	19.95	19.75	18.25	18.05	17.69	16.91	16.35				18.77
BLACK - New York													
1995-1996	20.88	20.65	20.50	20.50	19.70	20.00	20.25	22.65	29.56	28.45	28.85	27.94	23.33
1996-1997	27.50	27.35	27.13	26.92	27.31	27.72	27.94	27.75	27.88	27.88	26.63	24.17	27.18
1997-1998	20.92	22.38	27.25	31.25	37.17	38.50	35.00	35.00	35.00	41.13	NE	NE	32.36
1998-1999	29.81	31.88	35.00	35.25	32.83	30.50	NE	NE	24.00	24.60	24.75	24.20	29.28
1999-2000	21.08	20.63	19.90	19.58	18.00	17.78	17.50	17.25	17.10				18.76
CRANBERRY - Michigan													
1995-1996	30.00	29.50	29.81	29.92	29.88	29.56	29.38	29.50	30.75	31.38	31.50	NA	30.11
1996-1997	38.88	39.30	38.13	36.58	34.59	33.19	32.25	31.50	30.38	29.50	27.90	27.88	33.34
1997-1998	27.50	26.13	25.44	25.58	26.81	29.25	29.50	28.63	28.75	29.50	30.00	33.50	28.38
1998-1999	34.00	34.81	35.25	35.25	34.50	34.00	32.50	31.38	31.50	31.00	30.13	28.56	32.74
1999-2000	23.75	22.31	23.95	24.83	25.50	25.15	24.50	23.69	22.90				24.06
LIGHT RED KIDNEY - Michigan													
1995-1996	27.63	27.70	27.88	27.33	27.00	27.00	27.19	27.50	29.56	32.25	33.70	33.50	29.02
1996-1997	36.00	39.00	39.00	39.00	39.13	39.44	39.13	38.80	37.38	36.75	35.70	33.83	37.76
1997-1998	26.00	26.06	26.50	26.50	28.06	29.38	29.80	29.88	30.50	29.60	29.50	29.50	28.44
1998-1999	31.75	32.63	32.94	34.69	34.50	34.00	34.00	32.69	31.56	31.00	30.88	28.20	32.40
1999-2000	26.94	27.56	27.30	26.50	26.67	26.75	26.50	26.50	26.50				26.80
LIGHT RED KIDNEY - New York													
1995-1996	27.50	27.50	27.38	27.46	27.50	27.06	26.25	27.15	29.63	32.25	33.45	33.88	28.92
1996-1997	36.88	39.00	39.22	39.33	39.38	39.50	39.25	38.35	36.81	36.94	34.30	32.56	37.63
1997-1998	25.69	25.75	25.88	26.25	27.25	29.44	30.30	30.50	30.50	29.45	NE	30.00	28.27
1998-1999	31.92	32.38	32.88	34.63	34.50	34.44	33.40	32.50	27.00	31.45	31.25	28.38	32.06
1999-2000	26.81	27.34	27.50	26.42	26.42	26.25	26.50	26.50	26.30				26.67
LIGHT RED KIDNEY - Colorado													
1995-1996	28.38	28.95	28.75	28.92	28.55	28.13	27.75	29.35	31.88	33.00	33.55	33.88	30.09
1996-1997	37.00	39.40	39.94	40.08	40.00	40.00	40.00	40.00	38.50	37.88	36.90	35.69	38.78
1997-1998	26.65	26.94	27.50	27.50	28.75	29.50	28.90	28.13	28.00	28.80	28.75	29.75	28.26
1998-1999	32.40	32.50	32.94	34.50	35.33	35.44	34.03	33.13	33.25	33.00	32.31	30.70	33.29
1999-2000	30.38	29.75	29.50	29.17	28.25	27.50	27.00	26.63	26.50				28.30

NA=Not Available

Grower Monthly Average Price Per Cwt By Crop Year Fob

	SEP	OCT	NOV	DEC	JAN	FEB	MAR	APR	MAY	JUN	JUL	AUG	AVG
BLACK - Michigan													
1995-1996	15.38	15.30	14.63	13.83	13.40	13.88	14.00	15.70	22.63	21.88	23.60	23.25	21.44
1996-1997	23.38	22.90	22.50	22.50	21.25	22.36	22.88	22.90	22.50	22.50	20.70	19.50	29.02
1997-1998	15.00	16.81	19.00	22.17	27.75	29.00	28.00	28.00	28.00	26.25	BI	24.00	17.29
1998-1999	24.40	26.38	27.75	27.88	26.00	WD	WD	20.00	19.00	18.00	17.50	17.80	22.16
1999-2000	16.38	14.63	14.20	13.00	12.00	11.30	11.50	11.50	11.20				16.94
BLACK - New York													
1995-1996	16.00	15.80	15.13	15.00	14.10	14.00	14.00	15.10	19.75	20.00	20.20	20.50	16.63
1996-1997	20.75	20.90	20.13	20.00	20.00	20.00	20.00	20.00	20.38	21.50	20.75	NE	20.40
1997-1998	15.00	15.38	17.38	20.00	NE	25.75	NE	BI	BI	BI	BI	BI	18.70
1998-1999	23.50	24.88	25.75	26.00	25.33	WD	WD	WD	17.00	17.00	17.38	17.50	21.59
1999-2000	15.88	14.88	14.00	13.67	13.00	11.90	12.00	11.88	11.70				13.21
CRANBERRY - Michigan													
1995-1996	24.25	23.60	24.00	24.00	24.00	24.00	23.75	24.00	24.38	24.00	24.00	NA	24.00
1996-1997	32.81	33.30	31.13	29.33	29.00	27.38	25.63	25.50	24.75	24.75	24.00	NE	27.96
1997-1998	21.90	19.75	18.63	NE	19.75	21.33	22.00	22.00	NE	NE	NE	NE	20.77
1998-1999	28.13	29.00	29.50	29.50	29.17	28.25	28.00	NE	NE	NE	NE	NE	28.79
1999-2000	17.13	15.75	16.15	17.00	17.50	18.20	18.00	18.00	18.00				17.30
LIGHT RED KIDNEY - Michigan													
1995-1996	22.25	22.60	22.38	22.00	21.70	21.50	21.50	22.10	22.25	22.50	23.00	23.00	22.23
1996-1997	29.63	32.50	31.25	32.17	32.00	32.13	31.13	31.00	31.50	31.50	NE	NE	31.48
1997-1998	20.00	20.00	19.50	19.50	20.88	21.25	21.80	22.00	22.00	22.00	22.00	22.38	21.11
1998-1999	25.30	27.00	27.13	27.50	27.67	26.75	26.00	26.00	27.00	25.00	24.75	21.60	25.98
1999-2000	21.38	21.75	20.90	20.83	19.83	19.70	19.63	19.50	19.50				20.34
LIGHT RED KIDNEY - New York													
1995-1996	20.50	20.50	20.25	20.00	19.70	19.00	19.00	19.40	20.88	21.00	21.60	22.25	20.34
1996-1997	28.25	31.00	31.38	31.00	31.00	31.13	31.50	31.40	31.00	30.00	NE	NE	30.77
1997-1998	20.00	19.25	19.25	19.50	20.00	21.00	21.00	BI	BI	24.00	BI	BI	20.50
1998-1999	24.25	25.38	26.38	26.00	26.00	26.00	25.70	24.88	25.00	25.00	24.75	24.00	25.28
1999-2000	19.75	19.75	19.90	19.67	19.50	19.40	19.13	19.00	19.00				19.46
LIGHT RED KIDNEY - Colorado													
1995-1996	22.63	22.80	22.00	21.33	20.00	20.38	20.50	23.05	25.75	26.00	26.00	26.00	23.04
1996-1997	29.63	31.70	32.00	32.00	31.88	31.75	32.00	32.00	31.88	29.00	28.00	NE	31.08
1997-1998	19.60	19.50	20.25	20.00	20.75	21.38	22.30	22.50	22.50	22.50	22.50	22.50	21.36
1998-1999	23.70	24.00	24.13	26.50	28.00	28.00	28.00	27.63	27.50	27.50	27.50	22.30	26.23
1999-2000	20.00	20.00	20.00	20.00	19.67	19.90	19.25	19.00	18.70				19.61

NA=Not Available NE=Not Established BI=Bought-In

Dealer Monthly Average Price
Per Cwt By Crop Year Fob

	SEP	OCT	NOV	DEC	JAN	FEB	MAR	APR	MAY	JUN	JUL	AUG	AVG
SMALL WHITE - Idaho/Washington													
1995-1996	28.00	NE	28.00	28.00	29.00	NE	NE	NE	31.50	NE	NE	NE	28.90
1996-1997	NE	36.92	38.75	NE	40.25	NE	NE	NE	NE	NE	40.00	37.25	38.63
1997-1998	29.25	28.88	28.88	28.00	29.00	29.38	29.05	29.13	28.13	28.23	28.50	28.31	28.73
1998-1999	27.95	28.38	28.63	28.75	29.25	28.75	29.00	28.25	28.38	27.70	26.88	26.40	28.19
1999-2000	28.00	27.88	27.95	28.50	NE	24.00	NE	NE	NE				27.27
PEA BEAN - Michigan No 1's													
1995-1996	21.00	21.50	21.06	21.00	22.25	22.75	22.75	23.90	28.44	27.44	28.05	26.44	23.88
1996-1997	27.00	26.70	24.81	23.00	23.63	23.25	23.00	22.45	21.75	21.94	20.90	18.91	23.11
1997-1998	17.90	19.81	20.13	20.42	22.67	NE	NE	NE	NE	24.00	NE	NE	20.82
1998-1999	23.00	17.81	25.58	26.25	24.67	24.50	24.10	24.94	30.25	33.30	30.00	25.45	25.82
1999-2000	24.00	22.66	22.25	20.90	18.00	18.50	18.00	17.25	17.00				19.84
PEA BEAN - North Dakota/Minnesota													
1995-1996	19.88	19.85	19.09	18.33	20.70	21.44	21.63	23.10	27.81	26.44	26.95	25.50	22.56
1996-1997	26.31	25.30	22.88	21.67	22.00	23.55	21.06	20.55	20.03	19.94	18.95	17.69	21.66
1997-1998	15.75	15.63	16.50	17.50	21.06	20.00	NE	16.88	17.59	20.75	21.25	21.25	18.56
1998-1999	20.88	23.25	25.42	25.00	23.33	22.25	21.15	23.56	28.63	31.80	28.88	24.10	24.85
1999-2000	21.42	20.44	19.80	17.92	17.00	17.28	16.88	16.31	15.60				18.07
DARK RED KIDNEY - Michigan													
1995-1996	30.81	32.00	32.00	31.50	30.80	30.00	30.13	31.05	33.75	34.13	33.75	35.06	32.08
1996-1997	36.50	36.20	34.56	33.50	33.00	32.63	31.38	29.20	27.75	27.00	27.80	26.69	31.35
1997-1998	25.75	26.00	27.75	28.17	28.63	29.44	29.45	29.94	29.50	29.70	22.50	32.50	28.28
1998-1999	32.90	34.69	35.94	26.25	35.25	34.75	34.50	32.88	32.00	31.05	30.31	28.88	32.45
1999-2000	27.31	27.75	28.15	27.17	26.33	25.95	25.38	24.81	24.70				26.39
DARK RED KIDNEY - Minnesota/Wisconsin													
1995-1996	31.00	33.50	32.75	32.25	32.25	32.00	NE	NE	36.00	36.50	35.90	36.00	33.82
1996-1997	36.00	36.25	34.83	34.50	33.06	31.92	30.00	28.13	25.75	NE	26.80	26.19	31.22
1997-1998	25.30	25.38	27.69	28.42	28.88	28.56	29.54	29.50	29.81	29.10	30.38	32.81	28.78
1998-1999	33.35	34.69	36.19	35.88	35.50	35.31	34.55	32.75	32.13	31.30	30.50	28.69	33.40
1999-2000	26.38	27.78	27.10	26.00	26.13	25.35	24.69	25.00	26.00				26.05

NE=Not Established

Grower Monthly Average Price
Per Cwt By Crop Year Fob

	SEP	OCT	NOV	DEC	JAN	FEB	MAR	APR	MAY	JUN	JUL	AUG	AVG
SMALL WHITE - Idaho/Washington													
1995-1996	23.00	23.00	23.00	23.00	23.10	23.25	23.50	24.20	24.88	25.25	26.70	27.50	24.20
1996-1997	26.67	27.40	28.25	28.67	28.88	30.13	30.00	29.40	29.25	29.50	29.75	NE	28.90
1997-1998	21.50	20.38	20.50	20.50	20.63	21.00	20.70	20.67	20.25	20.60	20.88	20.75	20.70
1998-1999	20.30	19.50	19.13	19.50	19.50	19.50	19.30	19.00	19.00	19.00	19.00	19.40	19.34
1999-2000	19.13	19.25	18.90	17.33	17.33	17.00	17.00	17.00	16.30				17.69
PEA BEAN - Michigan No 1's													
1995-1996	16.69	16.55	17.00	17.00	17.80	17.75	18.00	18.80	21.88	21.88	24.00	23.25	19.22
1996-1997	23.50	22.70	20.38	18.83	18.63	18.63	18.13	16.70	16.50	16.50	15.70	14.25	18.37
1997-1998	12.75	12.69	12.56	12.50	13.69	14.19	14.05	14.00	14.13	15.10	15.50	15.83	13.92
1998-1999	16.90	17.81	19.38	19.50	19.50	18.75	17.10	17.50	20.25	21.90	22.00	20.00	19.22
1999-2000	19.06	17.25	16.30	13.17	11.17	11.10	11.00	11.00	10.80				13.43
PEA BEAN - North Dakota/Minnesota													
1995-1996	14.88	14.70	14.50	15.00	15.80	17.25	18.00	18.80	21.75	21.50	22.50	22.50	18.10
1996-1997	22.31	20.70	18.88	17.50	17.50	17.50	17.13	15.50	15.50	15.13	14.25	13.42	17.11
1997-1998	11.95	11.56	11.50	11.50	13.50	13.69	13.30	13.13	13.00	14.30	14.50	14.50	13.04
1998-1999	15.25	16.38	17.63	18.00	17.00	16.75	14.80	15.38	18.50	19.13	22.67	17.00	17.37
1999-2000	16.83	16.50	16.50	12.83	10.33	10.60	10.50	10.50	10.50				12.79
DARK RED KIDNEY - Michigan													
1995-1996	25.13	26.10	26.25	25.50	25.00	25.00	25.00	25.00	25.00	25.50	26.80	27.50	25.65
1996-1997	28.63	28.90	29.38	29.00	28.13	25.88	25.50	24.40	23.63	21.00	NE	NE	26.45
1997-1998	NE	20.25	20.00	20.33	21.38	21.25	22.80	23.00	22.50	22.50	22.50	23.17	21.79
1998-1999	26.30	28.50	28.13	28.38	28.00	27.75	27.20	26.00	26.00	25.40	24.75	22.50	26.58
1999-2000	21.63	21.88	21.50	20.83	19.17	18.00	19.00	19.00	19.00				20.00
DARK RED KIDNEY - Minnesota/Wisconsin													
1995-1996	26.56	27.85	26.88	26.50	26.25	26.38	26.44	26.60	28.38	29.75	30.00	30.25	27.65
1996-1997	31.00	29.70	29.25	29.67	28.13	25.38	25.50	22.67	20.25	20.67	20.60	NE	25.71
1997-1998	19.00	19.75	21.00	21.50	21.13	21.75	22.00	22.00	22.38	22.00	22.19	25.31	21.67
1998-1999	27.50	27.94	28.00	28.75	29.00	28.25	27.20	26.00	26.00	25.00	24.75	22.50	26.74
1999-2000	21.38	23.00	21.90	20.83	NE	19.20	19.00	19.38	19.50				20.52

NE=Not Established W=Withdrawn

Dealer Monthly Average Price
Per Cwt By Crop Year Fob

	SEP	OCT	NOV	DEC	JAN	FEB	MAR	APR	MAY	JUN	JUL	AUG	AVG
Austrian Winter Pea - Idaho/Washington													
1995-1996	16.28	16.25	16.13	16.25	16.25	16.25	16.28	16.25	16.69	17.44	17.34	17.50	16.58
1996-1997	17.83	18.56	17.78	17.50	17.63	17.92	17.97	18.45	18.75	18.69	17.75	17.50	18.03
1997-1998	16.88	16.78	16.66	16.25	16.33	16.53	16.18	16.00	16.50	NE	NE	14.50	16.26
1998-1999	14.50	NE	NE	NE	NE	13.00	NE	NE	NE	NE	12.50	9.00	12.25
1999-2000	9.79	10.00	10.00	NE	10.19	NE	NE	11.00	NE				10.20
Lentil - Idaho/Washington													
1995-1996	19.66	18.78	18.88	18.67	18.60	18.41	18.25	18.35	20.22	22.13	22.85	23.50	19.86
1996-1997	23.03	20.88	21.28	20.71	20.31	19.25	20.50	19.95	19.50	19.31	19.15	18.47	20.20
1997-1998	17.00	16.22	15.63	15.13	14.88	15.19	14.87	14.44	14.19	14.88	15.22	14.69	15.20
1998-1999	13.68	13.56	14.44	14.84	14.58	14.75	14.60	14.25	15.31	15.68	15.63	15.63	14.75
1999-2000	15.53	15.50	16.38	16.08	15.83	15.60	15.50	15.59	16.15				15.80
Green Split Pea - Idaho/Washington													
1995-1996	15.06	14.85	14.81	14.67	14.28	14.44	14.91	15.20	15.69	16.88	17.63	18.41	15.57
1996-1997	18.65	18.00	17.47	17.29	17.66	19.27	20.59	20.15	19.25	18.44	16.55	13.41	18.06
1997-1998	13.48	13.53	13.50	13.29	13.09	13.09	12.83	12.66	12.59	12.68	12.56	12.22	12.96
1998-1999	11.60	11.63	11.75	11.67	11.63	11.75	11.60	11.22	11.53	11.70	12.00	11.93	11.67
1999-2000	11.84	11.72	11.83	11.83	11.58	11.25	11.06	10.89	11.05				11.45
Whole Green Pea - Idaho/Washington													
1995-1996	12.16	11.78	11.66	11.42	11.35	11.72	12.41	12.58	12.81	13.88	14.45	15.63	12.65
1996-1997	15.60	14.69	14.38	14.04	14.47	16.46	17.50	16.98	16.44	15.19	13.50	10.72	15.00
1997-1998	10.58	11.00	11.06	10.92	10.84	10.81	10.55	10.63	10.47	10.65	10.44	10.00	10.66
1998-1999	9.48	9.41	9.31	9.38	9.50	9.50	9.38	9.28	9.63	9.63	10.00	9.73	9.52
1999-2000	9.81	9.75	9.55	9.38	9.38	9.45	9.09	9.13	9.18				9.41
Yellow Split Pea - Idaho/Washington													
1995-1996	12.47	12.50	12.69	12.58	12.50	13.41	12.75	12.75	12.81	13.75	14.69	15.00	13.16
1996-1997	15.40	14.69	14.38	13.96	14.47	16.46	17.25	16.40	15.78	14.69	13.15	10.56	14.77
1997-1998	13.33	13.47	13.31	13.25	13.00	13.00	12.85	12.66	12.44	12.63	12.44	12.08	12.87
1998-1999	11.31	11.41	11.22	11.19	11.29	11.38	11.38	11.00	11.25	11.38	11.50	11.70	11.33
1999-2000	11.84	11.50	11.58	11.50	11.42	11.35	11.31	11.44	11.48				11.49
Whole Yellow Pea - Idaho/Washington													
1995-1996	15.56	15.75	15.75	15.75	15.55	15.44	15.59	15.75	15.88	16.88	17.60	18.00	16.13
1996-1997	18.33	17.88	17.44	17.29	17.66	19.19	20.25	19.00	18.69	17.88	17.00	13.38	17.83
1997-1998	10.45	10.69	10.84	10.75	10.75	10.75	10.54	10.75	10.46	10.45	10.25	10.08	10.56
1998-1999	9.25	9.28	9.08	9.06	9.33	9.25	9.21	9.16	9.31	9.13	9.47	9.65	9.27
1999-2000	9.69	9.33	9.38	9.67	9.58	9.50	9.34	9.41	9.50				9.49

Grower Monthly Average Price
Per Cwt By Crop Year Fob

	SEP	OCT	NOV	DEC	JAN	FEB	MAR	APR	MAY	JUN	JUL	AUG	AVG
Austrian Winter Pea - Idaho/Washington													
1995-1996	12.13	12.10	12.25	12.08	12.00	12.00	12.00	12.00	12.00	12.00	12.10	13.00	12.14
1996-1997	13.00	13.00	12.88	12.83	13.00	13.00	13.19	13.50	NE	NE	13.00	12.56	13.00
1997-1998	12.38	12.25	12.19	12.25	12.06	12.00	12.00	11.00	NE	NE	NE	NE	12.02
1998-1999	NE	NE	7.75	NE	NE	7.50	7.50	NE	NE	8.00	7.00	6.33	7.35
1999-2000	6.00	6.19	6.30	6.50	6.50	6.40	6.38	6.44	6.50				6.36
Lentil - Idaho/Washington													
1995-1996	16.66	15.78	15.75	15.71	15.50	15.41	15.44	15.68	16.91	18.88	19.80	20.59	16.84
1996-1997	19.75	18.81	18.25	17.33	17.13	17.38	17.31	17.15	16.67	16.25	15.80	14.91	17.23
1997-1998	13.65	12.81	12.28	11.50	11.41	11.81	11.58	10.91	10.81	11.20	12.03	11.31	11.78
1998-1999	10.15	9.81	10.81	10.94	10.92	11.25	11.55	11.38	11.69	11.90	11.94	12.15	11.21
1999-2000	12.13	12.28	13.05	13.17	12.88	12.45	12.13	12.31	12.73				12.57
Whole Green Pea - Idaho/Washington													
1995-1996	8.91	8.40	8.31	8.25	8.45	9.00	9.56	9.78	10.03	10.91	11.55	12.50	9.64
1996-1997	12.20	11.19	10.97	11.00	11.44	12.58	14.38	13.80	13.42	11.88	8.70	7.66	11.60
1997-1998	7.73	7.84	8.09	8.00	8.00	8.00	8.10	7.91	7.75	7.85	7.72	6.84	7.82
1998-1999	6.15	6.00	6.19	6.31	6.46	6.50	6.53	6.56	6.75	6.88	6.91	6.53	6.48
1999-2000	6.22	6.03	6.03	5.83	5.79	5.78	5.78	5.69	5.68				5.87
Whole Yellow Pea - Idaho/Washington													
1995-1996	9.22	8.78	8.91	8.75	8.58	8.81	9.00	9.23	9.53	10.41	11.15	12.06	9.54
1996-1997	12.18	11.00	10.91	11.00	11.44	12.58	13.63	12.65	11.42	10.38	8.25	7.56	11.08
1997-1998	7.60	7.63	7.75	7.75	7.56	7.75	7.65	7.50	7.50	7.43	7.00	6.34	7.46
1998-1999	5.63	5.69	5.78	5.94	6.00	6.06	6.35	6.19	6.38	6.30	6.50	6.75	6.13
1999-2000	6.34	6.25	6.33	6.29	6.38	6.13	6.03	6.00	5.88				6.18

Dealer Monthly Average Price
Per Cwt By Crop Year Fob

	SEP	OCT	NOV	DEC	JAN	FEB	MAR	APR	MAY	JUN	JUL	AUG	AVG
Light Red Kidney - California													
1995-1996	29.66	30.00	30.00	30.00	29.75	29.75	29.69	31.75	32.78	35.50	NE	35.00	31.26
1996-1997	35.00	39.33	40.75	42.75	42.00	42.00	42.00	41.05	40.56	39.83	38.00	37.58	40.07
1997-1998	NE	31.00	30.00	30.00	30.00	30.25	31.60	30.75	31.00	31.70	32.00	32.00	30.94
1998-1999	32.44	33.50	NE	36.00	37.17	37.38	NE	NE	NE	34.50	34.50	33.00	34.81
1999-2000	32.00	NE	32.00	NE	31.88	NE	32.00	32.50	NE				32.08
Baby Lima - California													
1995-1996	35.81	36.85	36.75	36.92	38.50	41.88	41.75	41.50	41.38	41.56	41.50	41.50	39.66
1996-1997	41.50	42.35	43.56	46.00	47.50	47.50	47.50	46.75	46.56	46.50	46.45	44.75	45.58
1997-1998	32.75	29.56	28.50	28.33	27.00	26.25	25.85	25.75	25.75	26.10	26.69	27.56	27.51
1998-1999	30.85	33.88	38.75	46.88	48.50	47.50	47.13	46.00	42.75	39.30	38.00	35.69	41.27
1999-2000	30.97	29.50	29.40	29.25	28.58	28.65	28.06	27.44	27.55				28.82
Large Lima - California													
1995-1996	47.94	48.35	49.19	49.58	49.80	49.75	49.75	49.88	50.53	51.56	51.70	51.63	49.97
1996-1997	51.31	52.60	53.94	54.92	55.00	56.56	58.50	60.40	60.50	60.50	60.45	60.38	57.09
1997-1998	48.50	43.06	41.13	40.42	37.94	37.06	35.80	35.50	36.00	39.70	41.31	41.25	39.81
1998-1999	40.40	41.38	44.25	50.66	53.00	52.88	52.10	50.44	47.94	45.00	43.75	39.80	46.80
1999-2000	37.03	34.94	35.00	35.00	36.58	36.53	36.72	36.28	35.78				35.98
Blackeye - California													
1995-1996	33.83	30.10	28.00	27.16	26.25	25.13	25.13	30.50	31.44	31.88	31.50	31.44	29.36
1996-1997	33.00	34.00	34.38	34.50	34.38	33.69	32.69	31.00	31.00	30.63	30.60	31.00	32.57
1997-1998	31.50	31.38	31.13	30.50	30.50	30.75	30.00	29.94	29.38	30.20	31.75	35.00	31.00
1998-1999	32.67	32.00	32.88	35.13	38.83	40.75	41.00	41.06	40.69	40.45	39.75	35.00	37.52
1999-2000	27.75	25.44	24.81	24.33	22.50	21.58	21.31	21.41	22.23				23.48
Pink - California													
1995-1996	NE	NE	NE	26.00	26.75	25.50	NE	27.83	31.13	NE	NE	NE	27.44
1996-1997	NE	35.00	34.75	34.13	NE	34.00	34.00	32.25	31.25	31.25	32.00	31.33	33.00
1997-1998	28.00	30.25	29.50	30.00	NE	31.00	31.50	NE	NE	NE	NE	30.00	30.04
1998-1999	NE	NE	NE	30.50	30.00	NE	NE	NE	NE	NE	NE	NE	30.25
1999-2000	NE	NE	NE	NE	NE	NE	NE	NE	NE				#DIV/0!
Garbanzo - California													
1995-1996	49.00	51.30	56.25	59.00	56.25	52.38	51.25	35.50	37.38	36.25	35.00	34.67	46.19
1996-1997	33.00	32.75	32.08	32.00	33.00	33.50	33.50	31.00	31.50	31.67	31.50	31.63	32.26
1997-1998	32.25	32.00	31.75	31.50	33.75	34.75	34.80	34.94	35.88	NE	36.00	36.00	33.97
1998-1999	36.80	37.00	35.75	36.25	37.00	37.00	35.00	35.00	36.00	34.00	28.50	28.75	34.75
1999-2000	27.00	28.38	28.00	30.58	31.00	29.00	28.88	32.38	31.30				29.61

Grower Monthly Average Price Per Cwt By Crop Year Fob

	SEP	OCT	NOV	DEC	JAN	FEB	MAR	APR	MAY	JUN	JUL	AUG	AVG
Light Red Kidney - California													
1995-1996	NA	NA	NA	NA	NA	NA	NA	NE	31.20	34.00	34.00	34.50	33.43
1996-1997	NE	37.38	39.75	40.00	40.25	40.17	39.75	39.25	39.00	38.25	37.13	35.38	38.76
1997-1998	33.50	29.50	28.83	29.00	29.00	29.00	28.90	29.00	28.75	28.80	29.75	30.00	29.50
1998-1999	30.20	31.63	32.00	33.88	35.00	35.50	35.00	34.75	35.00	NE	32.83	31.00	33.34
1999-2000	NE	30.00	30.00	30.00	30.08	30.00	30.00	30.00	30.00				30.01
Baby Lima - California													
1995-1996	NA	NA	NA	NA	NA	NA	NA	40.00	40.00	40.19	40.05	40.00	40.05
1996-1997	40.00	40.00	40.50	43.67	45.06	45.00	45.00	47.50	44.88	44.25	44.50	43.06	43.62
1997-1998	34.50	27.63	27.00	26.92	25.75	24.75	24.20	23.81	23.75	24.15	25.38	26.50	26.20
1998-1999	28.70	32.25	36.50	43.63	45.00	44.75	44.75	41.00	39.13	37.40	36.13	33.80	38.59
1999-2000	29.13	28.19	27.80	27.50	27.00	27.00	26.63	26.13	26.00				27.26
Large Lima - California													
1995-1996	NA	NA	NA	NA	NA	NA	NA	48.00	48.75	50.00	50.00	49.88	49.33
1996-1997	49.75	50.00	50.63	51.67	52.00	53.88	55.38	55.50	58.00	58.00	58.00	58.00	54.23
1997-1998	49.20	41.00	39.50	38.67	36.63	35.06	34.20	33.91	34.31	38.40	39.25	38.13	38.19
1998-1999	38.00	38.25	41.38	48.13	50.00	50.00	50.00	48.13	46.25	43.00	41.75	37.90	44.40
1999-2000	35.75	34.94	35.00	35.00	35.00	34.70	35.00	34.75	34.40				34.95
Blackeye - California													
1995-1996	NA	NA	NA	NA	NA	NA	NA	30.00	29.94	30.25	30.00	29.50	29.94
1996-1997	31.25	31.90	32.38	32.50	32.00	31.50	31.25	29.80	29.50	29.50	29.50	29.50	30.88
1997-1998	29.30	29.50	29.13	29.00	29.00	28.75	28.00	28.00	27.88	28.60	30.00	NE	28.83
1998-1999	31.17	30.00	30.75	32.38	36.00	39.00	39.20	39.50	39.63	40.00	35.50	NE	35.74
1999-2000	26.50	24.25	22.00	22.00	21.83	20.05	20.00	20.00	20.30				21.88
Pink - California													
1995-1996	NA	NA	NA	NA	NA	NA	NA	NE	30.25	NE	NE	NE	30.25
1996-1997	NE	NE	32.00	32.50	NE	32.00	NE	30.00	30.00	28.75	27.75	27.50	30.06
1997-1998	26.50	NE	28.25	NE	NE	NE	NE	NE	NE	NE	NE	NE	27.38
1998-1999	NE	NE	NE	27.75	28.00	NE	NE	NE	NE	NE	NE	NE	27.88
1999-2000	NE	NE	NE	NE	NE	NE	NE	NE	NE				#DIV/0!
Garbanzo - California													
1995-1996	NA	NA	NA	NA	NA	NA	NA	NE	NE	NE	NE	32.00	32.00
1996-1997	31.25	29.80	NE	29.17	NE	30.50	31.00	NE	29.00	29.33	29.50	29.33	29.88
1997-1998	29.70	29.13	29.00	29.00	29.50	31.00	30.75	31.31	31.50	NE	32.33	32.00	30.47
1998-1999	32.00	32.00	32.00	32.00	32.00	32.00	30.00	30.00	NE	NE	25.50	26.00	30.35
1999-2000	24.17	25.00	26.60	28.50	27.50	24.50	22.50	23.25	28.00				25.56

Dry Edible Beans, U.S. Production by Commercial Class (1,000 Cwt.)

Class	1999	1998	1997	1996	1995	5 Year Average
Pea Bean, (Navy)	7,292	3,887	5,524	6,001	7,319	6,005
Great Northern	2,471	2,173	2,251	2,252	2,176	2,265
Small White	112	60	183	113	163	126
Pinto	10,839	14,511	10,920	12,162	11,349	11,956
Red Kidney	2,423	1,976	2,610	2,095	2,241	2,269
Pink	817	919	699	528	652	723
Small Red	900	660	892	405	745	720
Cranberry	578	382	660	503	575	540
Black	3,372	3,564	2,122	1,350	2,305	2,543
Large Lima	435	312	718	394	415	455
Baby Lima	675	204	902	517	510	562
Blackeye	1,327	653	807	567	1,091	889
Garbanzo	740	418	392	504	473	505
Other	1,249	699	690	569	798	801
Total	33,230	30,418	29,370	27,960	30,812	30,358

Source: USDA, NASS. *Subject to revision.

Canadian Crop Production

Pea Beans

PROVINCE	Harvested Acres (1,000)				Production (1,000MT)			
	1999	1998	1997	1996	1998	1998	1997	1996
Alberta	6.90	9.88	4.94		6.40	9.10	4.50	
Manitoba	100.10	49.91	49.91	35.09	72.60	36.30	31.80	20.00
Ontario	85.00	35.09	60.05	75.12	67.10	25.40	43.50	40.80
Quebec	3.70	3.46	3.46	0.15	3.00	3.10	2.80	1.30
TOTAL	195.70	98.35	118.36	110.35	149.10	73.90	82.60	62.10

Colored Beans

PROVINCE	Harvested Acres (1,000)				Production (1,000MT)			
	1999	1998	1997	1996	1999	1998	1997	1996
Alberta	40.00	35.09	29.90	20.02	36.30	36.30	31.80	18.10
Manitoba	69.90	49.91	29.90	20.02	49.00	35.80	15.90	12.20
Ontario	49.90	39.78	29.90	29.90	38.60	31.80	22.70	19.10
Quebec	14.80	8.65	8.65	7.41	11.50	7.30	7.50	6.20
TOTAL	174.60	133.43	98.35	77.34	135.40	111.20	77.90	55.60

Dry Peas

Province	Harvested Acres (1,000)				Production (1,000MT)			
	1999	1998	1997	1996	1999	1998	1997	1996
Alberta	454.90	499.88	384.98	340.01	530.80	488.00	421.80	356.50
British Columbia	8.90	9.88	4.94	4.94	5.70	9.10	4.10	4.10
Manitoba	94.90	255.01	205.09	145.05	92.00	225.90	178.30	136.90
Saskatchewan	1504.80	1899.95	1499.90	879.92	1623.40	1613.90	1158.00	747.90
TOTAL	2063.50	2664.73	2094.91	1369.92	2251.90	2336.90	1762.20	1245.40

Lentils

Province	Harvested Acres (1,000)				Production (1,000MT)			
	1999	1998	1997	1996	1999	1998	1997	1996
Alberta	22.00	15.07	24.96	24.96	12.40	8.00	8.30	8.40
British Columbia								
Manitoba	15.10	13.10	7.91	47.94	8.80	5.90	5.30	25.20
Saskatchewan	1190.00	890.05	780.09	709.92	702.60	465.80	365.10	383.70
TOTAL	1227.10	918.22	812.96	782.81	723.80	479.70	378.70	417.30

Source: Statistics Canada, Field Crop Reports

Dry Edible Beans, Production by Commercial Class (1,000 cwt)

Small Red					
State	1999	1998	1997	1996	1995
ID	405	275	462	263	335
MI	310	200	150	35	160
WA	185	185	280	107	250
Total	900	660	892	405	745

Small White					
State	1999	1998	1997	1996	1995
ID	61	31	77	57	62
MI	0	0	0	0	15
OR	12	7	28	10	36
WA	39	22	78	46	50
Total	112	60	183	113	163

Great Northern					
State	1999	1998	1997	1996	1995
CO	0	3	5	21	64
ID	137	158	120	167	158
KS	0	0	22	37	28
MN	40	30	40	48	67
NE	2111	1855	1974	1817	1723
WA	27	0	0	52	40
WY	156	127	90	110	96
Total	2471	2173	2251	2252	2176

Garbanzo					
State	1999	1998	1997	1996	1995
CA	290	80	150	352	288
ID	147	136	109	37	63
MT	133	84	0	0	0
ND	88	0	0	0	0
OR	22	59	56	34	20
WA	60	59	77	81	102
Total	740	418	392	504	473

Pink					
State	1999	1998	1997	1996	1995
CA	25	59	62	125	98
ID	412	373	325	167	301
MN	143	148	124	66	66
ND	145	189	95	96	59
NM	0	0	0	8	18
WA	92	150	93	66	110
Total	817	919	699	528	652

Cranberry					
State	1999	1998	1997	1996	1995
CA	25	35	70	45	42
ID	23	18	24	24	19
MI	496	285	520	400	470
MN	34	44	47	34	44
Total	578	382	661	503	575

Baby Limas					
State	1999	1998	1997	1996	1995
CA	675	204	902	517	510
Total	675	204	902	517	510

Large Lima					
State	1999	1998	1997	1996	1995
CA	435	312	718	394	415
Total	435	312	718	394	415

Black					
State	1999	1998	1997	1996	1995
CA	11	35	0	17	28
CO	20	9	8		19
ID	103	107	50	21	55
MI	2260	2100	1400	940	1700
MN	150	172	85	41	83
NE	115	56	46	18	17
ND	496	816	334	213	208
NY	141	147	199	100	135
WA	76	55	0	0	60
WY	0	64	0	0	0
Total	3372	3561	2122	1350	2305

Blackeye					
State	1999	1998	1997	1996	1995
CA	800	570	695	511	970
TX	527	83	112	56	121
Total	1327	653	807	567	1091

Pea Bean (Navy)					
State	1999	1998	1997	1996	1995
CO	0	9	3	0	14
ID	108	35	91	152	139
KS	0	0	0	18	17
MI	3450	1180	2290	2800	3950
MN	998	745	926	783	845
NE	121	102	117	95	110
NM	0	40	92	110	85
ND	2555	1767	1943	1929	2086
OR	23	9	21	42	43
WY	37	0	41	72	30
Total	7292	3887	5524	6001	7319

Dry Edible Beans, Production by Commerical Class (1000 cwt)

All Red Kidney*						Light Red Kidney					Dark Red Kidney						
State	1999	1998	1997	1996	1995	State	1999	1998	1997	1996	1995	State	1999	1998	1997	1996	1995
CA	175	164	288	269	281	CA	125	117	198	187	209	CA	50	47	90	82	72
CO	220	170	248	114	263	CO	220	170	248	114	263	ID	22	20	11	12	20
ID	39	52	38	29	38	ID	17	32	27	17	18	MI	153	90	120	100	210
MI	459	260	350	240	410	MI	306	170	230	140	200	MN	597	450	543	630	399
MN	775	615	706	809	499	MN	178	165	163	179	100	ND	27	32	33	50	43
NE	265	252	365	199	234	NE	265	252	365	199	234	NY	71	88	24	38	64
ND	27	32	33	50	43	NY	225	209	387	203	292	WI	124	115	171	144	117
NY	296	297	411	241	356	WA	43	19	0	0	0	Total	1,044	842	992	1,056	925
WA	43	19	0	0	0	Total	1,379	1,134	1,618	1,039	1,316						
WI	124	115	171	144	117												
Total	2,423	1,976	2,610	2,095	2,241												

Pinto						Other					Total						
State	1999	1998	1997	1996	1995	State	1999	1998	1997	1996	1995	State	1999	1998	1997	1996	1995
CO	2,235	2,617	1,991	2,112	2,158	CA	164	95	115	95	180	CA	2,600	1,554	3,000	2,325	2,740
ID	664	914	842	976	971	CO	280	60	25	3	40	CO	2,755	2,868	2,280	2,250	2,558
KS	292	354	315	370	410	ID	13	13	19	14	19	ID	2,112	2,112	2,156	1,907	2,160
MI	170	293	140	120	70	KS	95	26	43	19	26	KS	387	380	380	444	481
MN	343	726	555	573	433	MI	205	107	91	105	155	MI	7,350	4,425	4,941	4,640	6,930
MT	296	264	257	235	205	MN	75	58	75	64	18	MN	2,558	2,538	2,558	2,418	2,055
NE	1,096	1,386	1,188	1,560	1,414	MT	12	2	0	64	18	MT	441	350	257	235	205
NM	18	92	112	146	140	NE	32	15	18	16	90	NE	3,740	3,666	3,708	3,705	3,588
ND	4,860	6,832	4,480	5,138	4,704	NM	0	39	0	0	8	NM	18	171	204	264	251
OR	35	42	30	40	40	NY	21	38	60	36	47	NY	414	426	679	377	538
TX	12	3	17	8	23	ND	50	106	79	98	82	ND	8,265	9,798	7,119	7,524	7,182
UT	53	30	42	10	32	OR	82	35	47	32	69	OR	174	152	182	158	208
WA	207	380	235	311	250	TX	162	49	14	20	81	TX	701	135	143	84	225
WY	558	578	552	563	499	WA	21	20	87	47	40	UT	53	30	42	10	32
Total	10,839	14,511	10,756	12,162	11,349	WY	37	36	17	20	15	WA	750	890	850	710	902
						Total	1,249	699	690	633	888	WI	124	115	171	144	117
												WY	788	808	700	765	640
												Total	33,230	30,418	29,370	27,960	30,812

Source: USDA, NASS and Annual Crop Summary - January 1998

USDA Dry Bean, Pea, and Lentil Production Data 1995-1999

Lentil

State	Area Planted (1,000 Acres)					Area Harvested (1,000 Acres)					Yield (Pounds)					Production (1,000 Cwt.)				
	1999	1998	1997	1996	1995	1999	1998	1997	1996	1995	1999	1998	1997	1996	1995	1999	1998	1997	1996	1995
Idaho	61	58	67	56	71	60	56	66	55	70	1,400	1,150	1,400	800	1,450	840	644	924	440	1,015
Washington	75	62	83	63	79	75	62	82	62	75	1,300	1,350	1,360	1,100	1,400	975	837	1,115	682	1,050
Other States	46	42	43	28	18	39	40	35	23	18	1,450	1,130	1,050	917	883	572	457	367	211	159
United States	182	162	193	147	168	174	158	183	140	163	1,207	1,207	1,315	952	1,364	2,387	1,938	2,406	1,333	2,224

Dry Edible Pea

State	Area Planted (1,000 Acres)					Area Harvested (1,000 Acres)					Yield (Pounds)					Production (1,000 Cwt.)				
	1999	1998	1997	1996	1995	1999	1998	1997	1996	1995	1999	1998	1997	1996	1995	1999	1998	1997	1996	1995
Idaho	54	69	75	61	70	53	67	74	59	68	1,900	1,700	2,100	1,000	2,300	1007	1139	1554	590	1,564
Washington	110	108	126	109	112	110	108	126	108	111	2,020	2,170	2,080	1,300	2,500	2222	2344	2621	1404	2,775
Other States	146	146	103	46	16	134	134	86.6	37.9	15	1,790	1,830	1,930	1,786	2,840	1801	2451	1577	677	426
United States	310	323	304	216	198	297	309	286.6	204.9	194	1,694	1,920	2,007	1,304	2,456	5030	5934	5752	2671	4765

Austrian Winter Pea

State	Area Planted (1,000 Acres)					Area Harvested (1,000 Acres)					Yield (Pounds)					Production (1,000 Cwt.)				
	1999	1998	1997	1996	1995	1999	1998	1997	1996	1995	1999	1998	1997	1996	1995	1999	1998	1997	1996	1995
Idaho	5.0	8.0	7.5	8.0	10.0	4.0	7.0	7.2	7.0	7.0	1,400	1,400	1,500	1,400	1,500	56	98	108	98	105
Oregon	1.1	1.0	1.2	0.6	0.9	0.4	0.4	0.4	0.3	0.7	1,000	1,500	1,750	1,667	2,000	4	6	7	5	14
United States	6.1	9.0	8.7	8.6	10.9	4.4	7.4	7.6	7.3	7.7	1,364	1,405	1,513	1,411	1,545	60	104	115	103	119

Wrinkled Seed Pea

States	Production (1,000 cwt)				
	1999	1998	1997	1996	1995
Idaho	340	248	286	316	493
Washington	318	426	396	232	555
United States	658	674	682	548	1048

Source: Agricultural Statistics Board, NASS, USDA

Dry Pea and Lentil Production Data 1993-1999*

				CHICK PEA							
				Year	Acreage	Avg lbs.	Production lbs.				
				1999	35,200	917	32,282,960				
				1998	22,056	1,106	24,390,500				
				1997	12,168	1,391	16,920,777				
				1996	17,760	666	11,832,620				
				1995	13,137	1,369	17,978,008				
				1994	4,165	513	2,136,373				
				1993	6,729	827	5,618,798				
				10 Yr Avg	12,967	978	12,687,811				
				LENTIL							
				Year	Acreage	Avg lbs.	Production lbs.				
				1999	58,000	1,226	71,129,746				
				1998	58,096	1,239	72,002,949				
				1997	95,259	1,222	116,446,926				
				1996	88,232	894	78,905,656				
				1995	129,395	1,250	161,804,536				
				1994	174,677	917	160,189,216				
				1993	155,838	1,319	205,474,833				
				10 Yr Avg	112,557	1,135	127,754,390				
				OTHER LENTIL VARIETIES							
				Year	Acreage	Avg lbs.	Production lbs.				
				1999	131,400	1,206	158,475,899				
				1998	98,556	1,069	105,366,971				
				1997	59,047	1,586	93,650,994				
				1996	52,298	658	34,401,606				
				1995	42,814	1,314	56,248,274				
				5 Yr Avg	78,736	1,138	89,628,949				
				SMALL SIEVE GREEN							
				Year	Acreage	Avg lbs.	Production lbs.				
				1999	2,109	2,324	4,901,311				
				1998	6,354	1,827	11,611,921				
				1997	10,865	1,725	18,741,852				
				1996	10,302	1,077	11,092,055				
				1995	7,839	2,645	19,327,020				
				1994	7,615	1,784	13,586,278				
				1993	3,917	2,087	8,175,949				
				10 Yr Avg	6,766	1,774	12,001,585				
				AUSTRIAN WINTER PEA							
				Year	Acreage	Avg lbs.	Production lbs.				
				1999	10,000	1,032	10,319,038				
				1998	10,187	2,307	23,506,249				
				1997	13,054	954	12,449,989				
				1996	6,893	1,406	10,531,800				
				1995	8,224	1,406	11,563,195				
				1994	4,931	1,154	5,690,485				
				1993	11,857	1,276	15,130,100				
				7 Yr Avg	9,307	1,362	12,741,551				
				REGULAR GREEN							
Year	Acreage	Avg lbs.	Production lbs.								
1999	206,645	1,945	401,892,562								
1998	197,365	2,142	422,687,215								
1997	156,861	2,291	359,320,171								
1996	141,097	1,141	161,033,931								
1995	159,249	2,255	359,127,907								
1994	107,074	1,701	182,138,971								
1993	144,185	2,096	302,180,620								
10 Yr Avg	153,193	1,892	289,774,533								
				YELLOW PEA							
Year	Acreage	Avg lbs.	Production lbs.								
1999	60,313	1,849	111,511,553								
1998	98,258	2,016	198,075,267								
1997	37,481	2,038	76,383,732								
1996	25,957	1,034	26,833,781								
1995	23,192	1,683	34,291,888								
1994	9,789	1,571	15,381,632								
1993	4,894	2,594	12,695,981								
10 Yr Avg	33,653	1,785	600,068,178								

* - Figures include US dry pea and lentil figures as reported by member processors

Source: USA Dry Pea and Lentil Council

BEANS, DRY: U.S. EXPORTS BY COUNTRY OF DESTINATION, October 1998-September 1999

(Data in Metric Tons)

Country	Navy or Pea	Great Northern	Large Lima	Baby Lima	White n.e.c.	Lt Red Kidney	Dk Red Kidney	Pinto	Black	Beans n.e.c.	Seed Beans	Small Reds	Total
NORTH AMERICA													
Antigua & Barbuda						18	72						90
Bahamas, The								39		10			49
Bermuda										11			11
Canada	8570		619			1783	933			2970	2762	476	18113
Costa Rica	59	64			16				2786	93	342	39	3399
Dominican Republic	668	370	4	3			38	13010	148				14241
El Salvador						199				179		504	882
Guatemala		41						983	2565	190	7		3786
Haiti					41			24848	168		166	401	25624
Honduras		361				449	989	6089	330		346	4370	12934
Jamaica & Dep.	129		4	9	55	49	197				27	304	774
Leeward-Windward	39						1240	68	26	9			1382
Mexico	2253		224	9	121	1513	493	27235	13314	10144	3211		58517
Netherlands-Antillies			28	3		131	174	9	6				351
Nicaragua	16							7370			35	1542	8963
Panama	230		36	116	20	300	590	41	31	38	272		1674
SOUTH AMERICA													
Aruba											9		9
Argentina											35	18	53
Bolivia										17			17
Brazil								2236	163		213	62	2674
Chile		128								5	38		171
Colombia	37					508				404	105	116	1170
Ecuador	254										2		256
French Guiana						103	216						319
Guyana								124					124
Peru			27					770		498	108		1403
Trinidad-Tobago						36	218	203		23	54		534
Uruguay										128	2		130
Venezuela	201	410	36			1352	249		117	95	17	62	2539
EUROPE													
Austria										44			44
Belgium & Lux.	2942	1923			206	54	311					36	5472
Bosnia	3307						358	230				390	4285
Bugaria							945	1135					2080
Croatia						280		1156					1436
Cyprus											1		1
Denmark							19		19				38
Finland	17												17
France	157	6688	1	18		23	1710	59		1453	43	30	10182
Germany	574	166			65	4	1070						1879
Greece	2247	1894	3					361	18		86		4609
Hungary											31		31
Ireland		25	39				27		21				112
Italy	9915	700	296	54			3952	13		2052	1640		18622
Macedonia	1654												1654
Netherlands	1402	1672	109	18	58	48	812	130	27	739	1349		6364
Norway		80								5			85
Poland							23						23
Portugal	27					802	558	43	113	113	18		1674
Romania	17												17
Russian Federation							1026						1026
Slovakia								46					46
Slovenia										14			14
Spain	380	398					469	125	233	3261	614		5480
Sweden		23						9		20			52
Switzerland							687						687
Ukraine	19												19
United Kingdom	52758	20	2149	51			2488	193	22	2245	118	41	60085
Yugoslavia	1711						174	130					2015

BEANS, DRY: U.S. EXPORTS BY COUNTRY OF DESTINATION, October 1998-September 1999

(Data in Metric Tons)

Country	Navy or Pea	Great Northern	Large Lima	Baby Lima	White n.e.c.	Lt Red Kidney	Dk Red Kidney	Pinto	Black	Beans n.e.c.	Seed Beans	Small Reds	Total
ASIA													
Azerbaijan, Rep.								860					860
China(Mainland)			12	18			5			4717	34	21	4807
Hong Kong	54	20				108	4		163	93	71		513
India			18						36	3271	18		3343
Israel	19	621								21	143		804
Japan	29	2783	1423	8120	169	8	42	24	78	90	872	72	13710
Jordan											425		425
Kazakistan	6												6
Korea	553	1283			41		121		18	60			2076
Kuwait										30			30
Lebanon										89			89
Malaysia	19	611		36	213			42					921
Myanmar(Burma)										161			161
Oman											17		17
Pakistan										106			106
Philippines		1289			61		61			182		43	1636
Saudi Arabia										24	278		302
Singapore								10		25			35
Sri Lanka											56		56
Syria										11	1		12
Taiwan		20		91						88	10		209
Thailand								21		1929	74		2024
Turkey		636	4							723			1363
United Arab Emirates			9							46	20		75
Vietnam										7			7
OCEANIA													
Australia		779	320	249	261	48	376	488	12	1560	989	589	5671
French Pacific Is.					44		64		17			76	201
New Zealand	2520	59			193	45	47	20	7	100	71		3062
Other Pacific Is.											7		7
AFRICA													
Algeria		8401								2189	45		10635
Angola								3010			25		3035
Burkina								2292					2292
Cape Verde Is.								617					617
Egypt		8323								62	28		8413
Ghana											17		17
Kenya										34			34
Malawi										9			9
Morocco		557									11		568
Rwanda								944					944
Senegal								620					620
So. Africa, Rep of	936			58						29	40		1063
Sudan												703	703
Zambia								301					301
Zimbabwe											3		3
Others													63
Oct-98 Sep-99	93764	40345	5361	8853	1564	7662	20776	96103	20438	40416	14906	9895	360083

Source: Foreign Agricult.

Note: Bean, N.E.C. includes Beans Other, Beans other Ex Seed, Beans Misc, Chickpeas, Cranberry, and Mung Beans

PEAS, DRIED: U.S. EXPORTS BY COUNTRY OF DESTINATION, October 1998-September 1999

(Data in Metric Tons)

Country	Lentils	Yellows	Green	Other n.e.c.	Austrian Winter	Blackeye	Seed	Total
NORTH AMERICA								
Antigua & Barbuda	10					22		32
Belize						55		55
Canada	14363		810	29290			8258	52721
Costa Rica	1		159				18	178
Dominican Republic	13		7					20
El Savador							9	9
Guatemala							225	225
Haiti	3611		706					4317
Honduras							30	30
Jamaica & Dep.			426				9	435
Leeward-Windward	74	21	19				19	133
Mexico	3984	222	2207	103			1595	8111
Netherlands-Antillies					5			18
Panama	162		5	1		13	1	242
SOUTH AMERICA								
Aruba								
Argentina							82	82
Bolivia	347		2445					2792
Brazil	34			73			126	233
Chile			235	21			426	682
Colombia	1542	554	741	1			1	2839
Ecuador	124						15	139
French Guiana	63							63
Guyana		468						468
Peru	7808		5030	922			1629	15389
Surinam		11	11			36		58
Trinidad-Tobago		45				36		81
Uruguay	66						6	72
Venezuela	413		164		51		85	713
EUROPE								
Belgium & Lux.							483	483
Cyprus				36		314	36	386
Denmark			63	1			334	398
Finland							150	150
France	98			119		18	1829	2064
Germany	192		5	18			1392	1607
Greece	1099			29		969	8	2105
Hungary							47	47
Iceland							45	45
Ireland							38	38
Italy	2109	21	35	37		266	1673	4141
Malta							3	3
Moldova, Rep. Of							415	415
Netherlands	954		2594	363		40	825	4776
Norway	20		41				48	109
Portugal						549	134	683
Russian Federation	161	121	691				994	1967
Spain	18740		85	231		255	1455	20766
Sweden	188	328	108			18	602	1244
Switzerland							55	55
United Kingdom	24		307	294		223	2578	3426

PEAS, DRIED: U.S. EXPORTS BY COUNTRY OF DESTINATION, October 1998-September 1999

(Data in Metric Tons)

Country	Lentils	Yellows	Green	Other n.e.c.	Austrian Winter	Blackeye	Seed	Total
ASIA								
Azerbaijan, Rep.		153						153
Bahrain	57					12		69
Bangladesh	408		105					513
China(Mainland)	3		64	53		161	1207	1488
Hong Kong		84	399	92		291	397	1263
India	2665		5473	3606		17		11761
Israel	21		43				220	284
Japan	152	22	884	266	178	17	380	1899
Jordan			85			42	47	174
Korea		21	1405				53	1479
Kuwait							9	9
Lebanon	1						128	129
Malaysia			629			128		757
Oman							18	18
Pakistan	1137						167	1304
Philippines	324		11897		209		16	12446
Qatar							6	6
Saudi Arabia	142		77			22	222	463
Singapore			128			109		237
Syria							356	356
Taiwan	10	1677	643		211	54	62	2657
Tajikistan, Rep.		197						197
Thailand				25			23	48
Turkey	843		214	10			60	1127
United Arab Emirates				21		432	532	985
OCEANIA								
Australia	1250		211	977		179	782	3399
French Pacific Is.	361							361
New Zealand	15			57		18	128	218
AFRICA								
Algeria	106						100	206
Burkina		66	1240					1306
Burundi			1637					1637
Central Africa Rep.							121	121
Egypt	382						1291	1673
Ethiopia	2075		3725					5800
Ghana			363			5		368
Guinea			160					160
Kenya	3028	420	923	91			49	4511
Liberia	1613	2296	2077					5986
Malawi	42			111				153
Mali			627					627
Maurituis		618	169					787
Rwanda		8005	6674					14679
Sierra Leone	2068		979					3047
So. Africa, Rep of			14			18	6	38
Sudan	3055		597					3652
Uganda			1296					1296
Zimbabwe						18	15	33
Others	241	19		23			20	303
Oct-98 Sep-99	76199	15509	60691	36871	654	4410	32093	226427

Source: Foreign Agricultural Service, Compiled by USDA Market News

Note: Other n.e.c. consists of Peas other ex seed, Dried Peas, and Split Peas.

U.S. Exports, Dry Beans (cwt)

Beans	Oct 98-Sep 99	Oct 97-Sep 98	Oct 96-Sep 97	Oct 95-Sep 96	Oct 94-Sep 95	Oct 93-Sep 94
Pea Bean	2,066,559	2,286,782	2,078,626	2,026,534	2,035,265	1,576,532
Great Northern	889,204	1,219,650	852,126	660,388	784,375	361,488
Lima	313,277	458,168	394,856	390,214	450,069	483,667
White n.e.c.	34,471	29,357	12,100	25,331	160,781	35,406
Kidney	626,774	228,092	799,524	719,405	788,299	776,196
Pinto	2,118,110	2,227,473	1,519,430	1,898,668	2,504,514	1,860,264
Black	450,454	890,085	487,806	513,716	236,554	198,612
Beans n.e.c. **	890,769	789,296	570,174	448,526	810,599	796,475
Seed	328,528	347,901	310,838	261,620	243,079	239,552
Small Red	218,086	158,357	250,998	264,045	391,030	389,928
Total	7,936,229	8,635,162	7,276,478	7,208,447	8,404,565	6,718,120

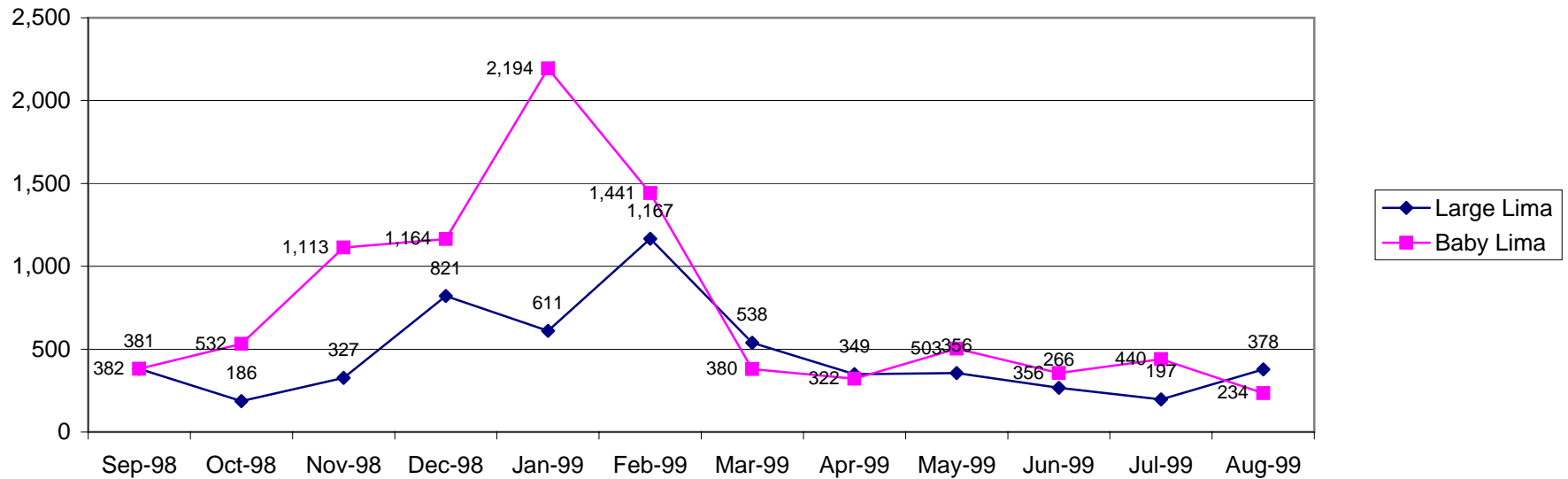
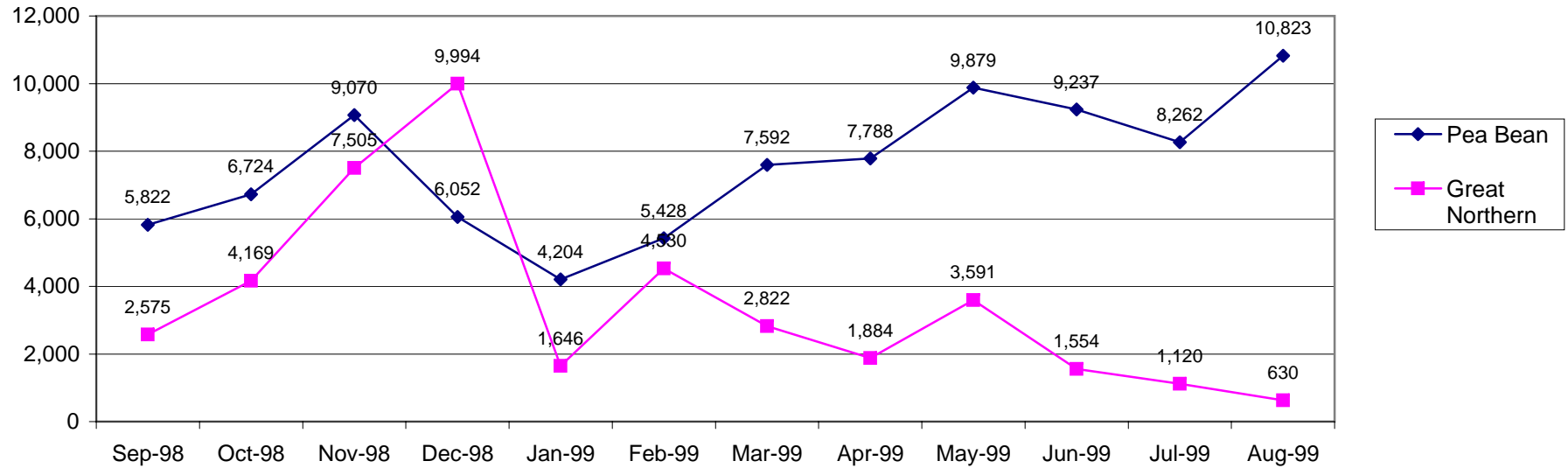
** Bean, N.E.C. includes Beans Other, Beans other Ex Seed, Beans Misc, Chickpeas, Cranberry, and Mung Beans

U.S. Exports, Dry Ripe Peas (cwt)

Peas	Oct 98-Sep 99	Oct 97-Sep 98	Oct 96-Sep 97	Oct 95-Sep 96	Oct 94-Sep 95	Oct 93-Sep 94
Austrian Winter	14,414	41,810	57,134	50,463	28,858	69,842
Blackeye	97,196	153,883	58,894	66,998	81,482	68,739
Green	1,337,630	1,553,776	926,266	2,000,763	1,549,856	1,710,285
Lentils	1,679,426	2,170,720	1,240,206	1,233,738	1,512,069	1,978,011
Other n.e.c.	812,637	596,667	126,456	94,158	265,897	118,056
Seed	707,330	599,466	507,364	578,509	626,790	571,895
Yellow	341,818	138,323	127,314	144,908	101,279	220,504
Total	4,990,451	5,254,645	3,043,634	4,169,537	4,166,231	4,737,332

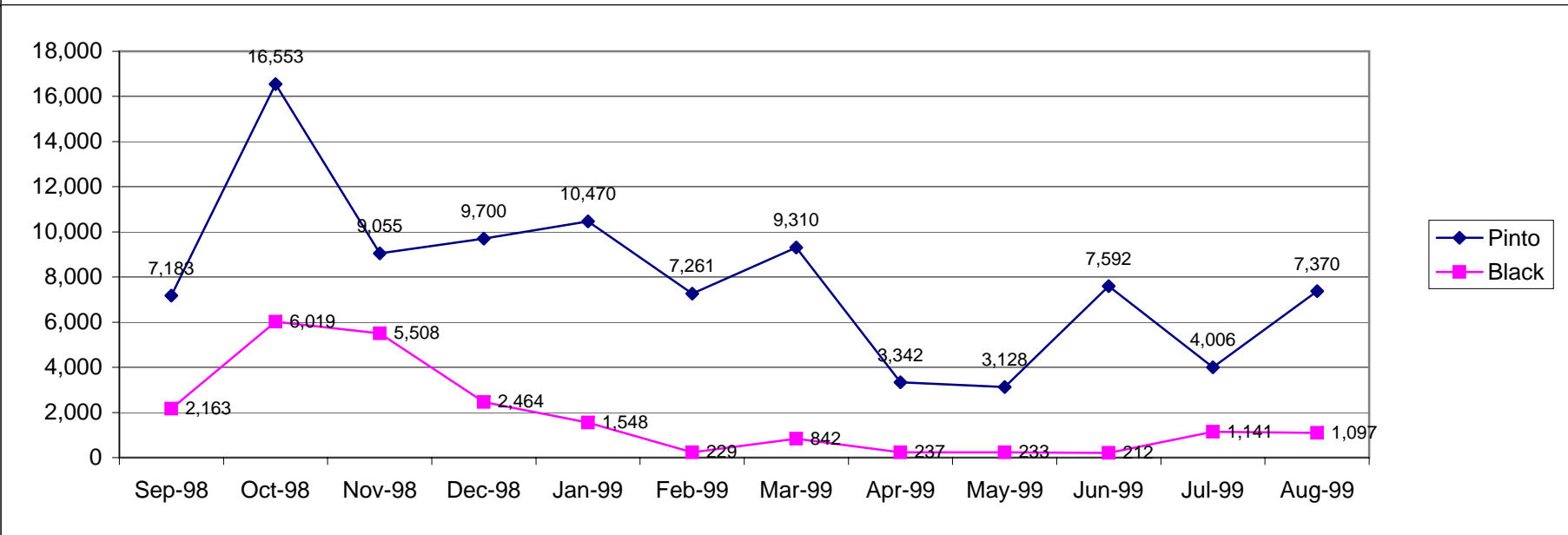
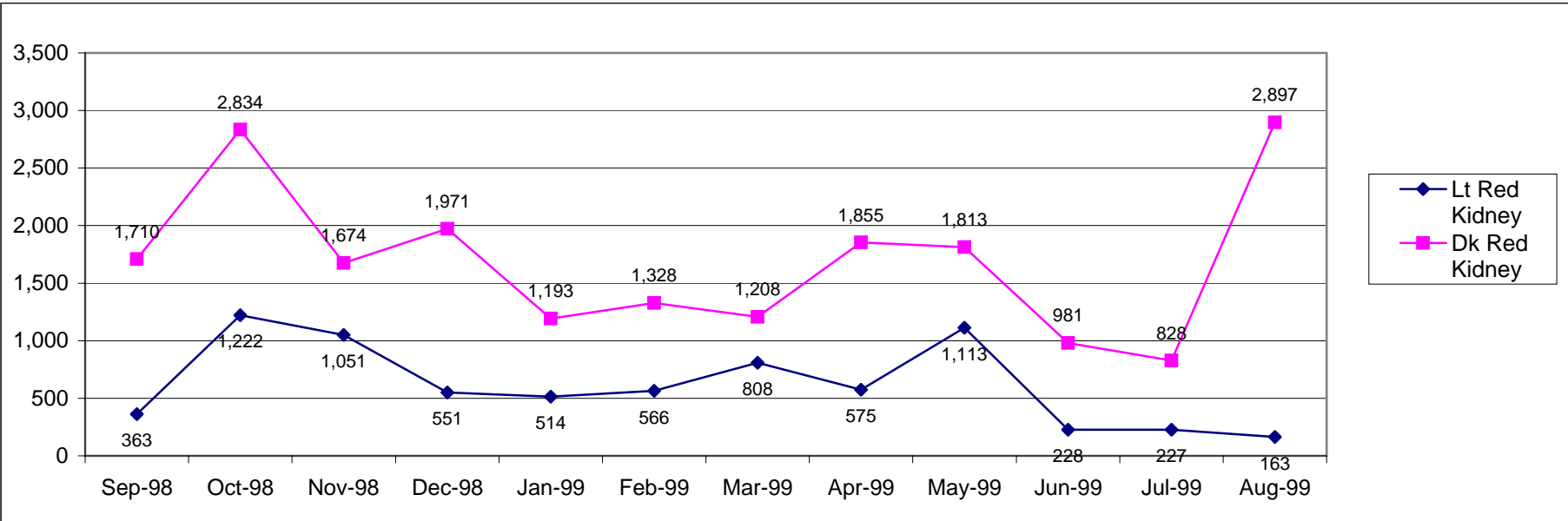
BEANS, DRY: U.S. EXPORTS BY MONTH, September 1998-August 1999

Data in Metric Tons



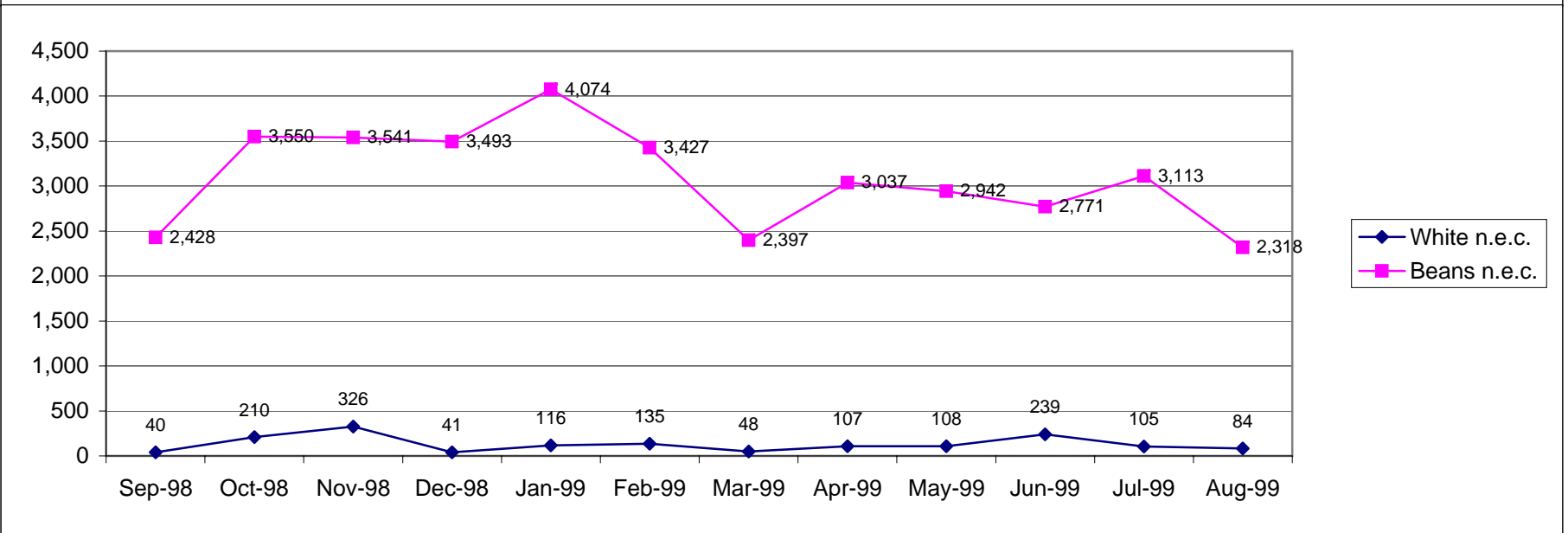
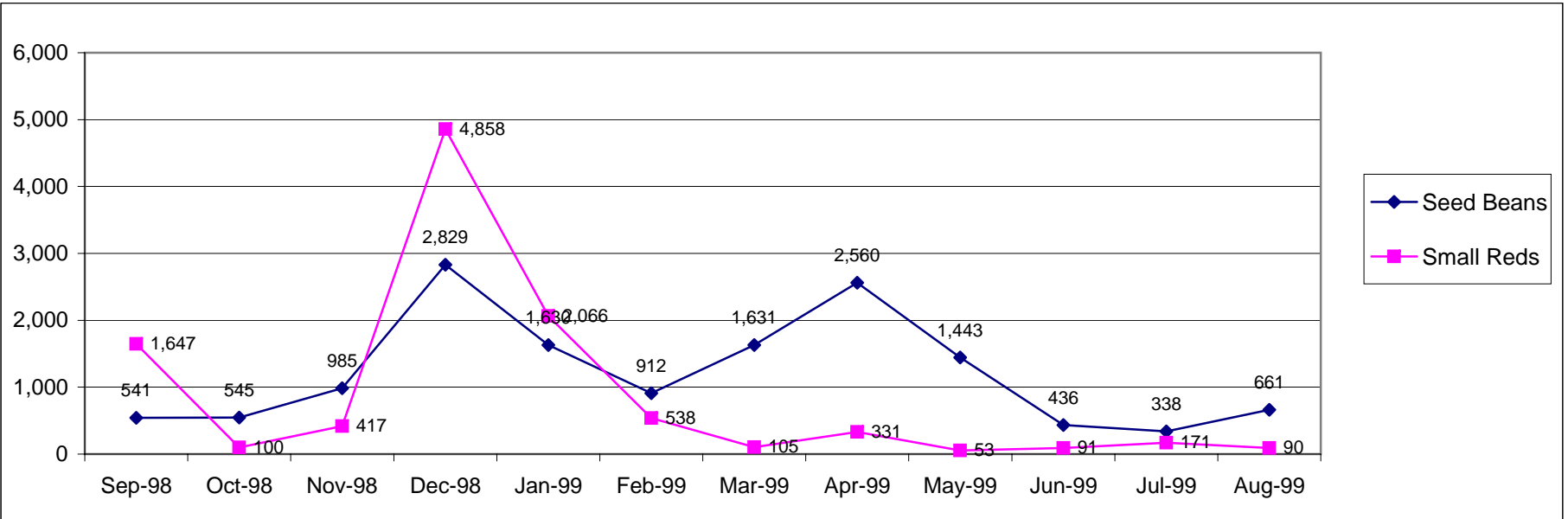
BEANS, DRY: U.S. EXPORTS BY MONTH, September 1998-August 1999

Data in Metric Tons



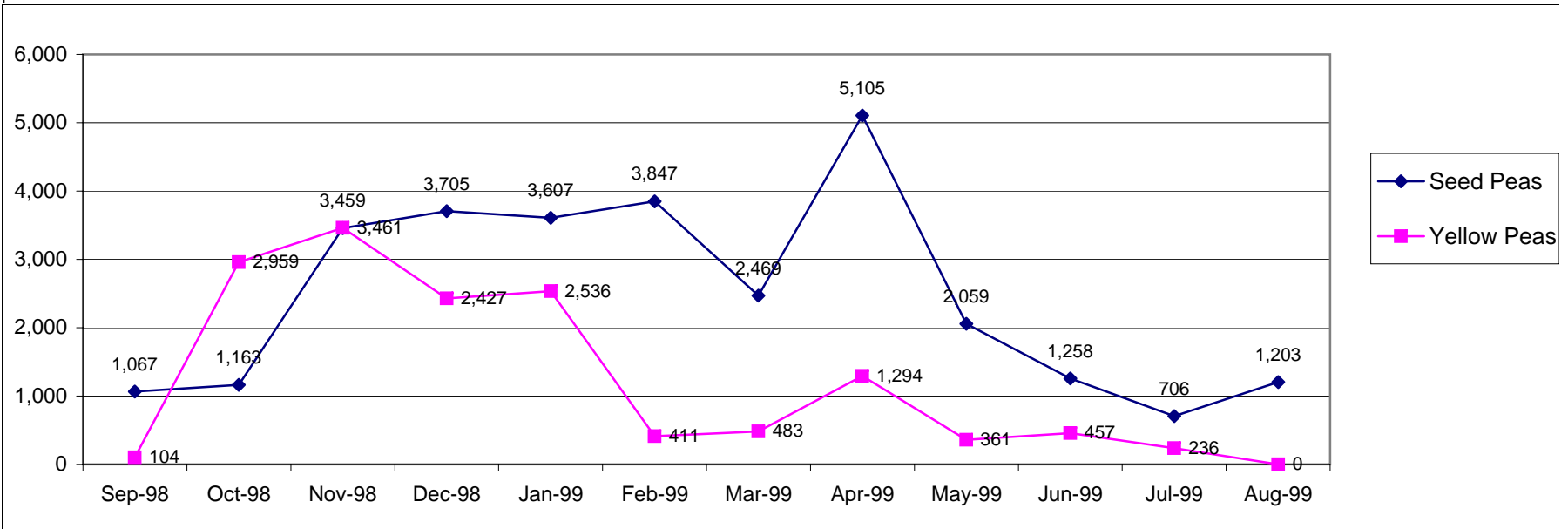
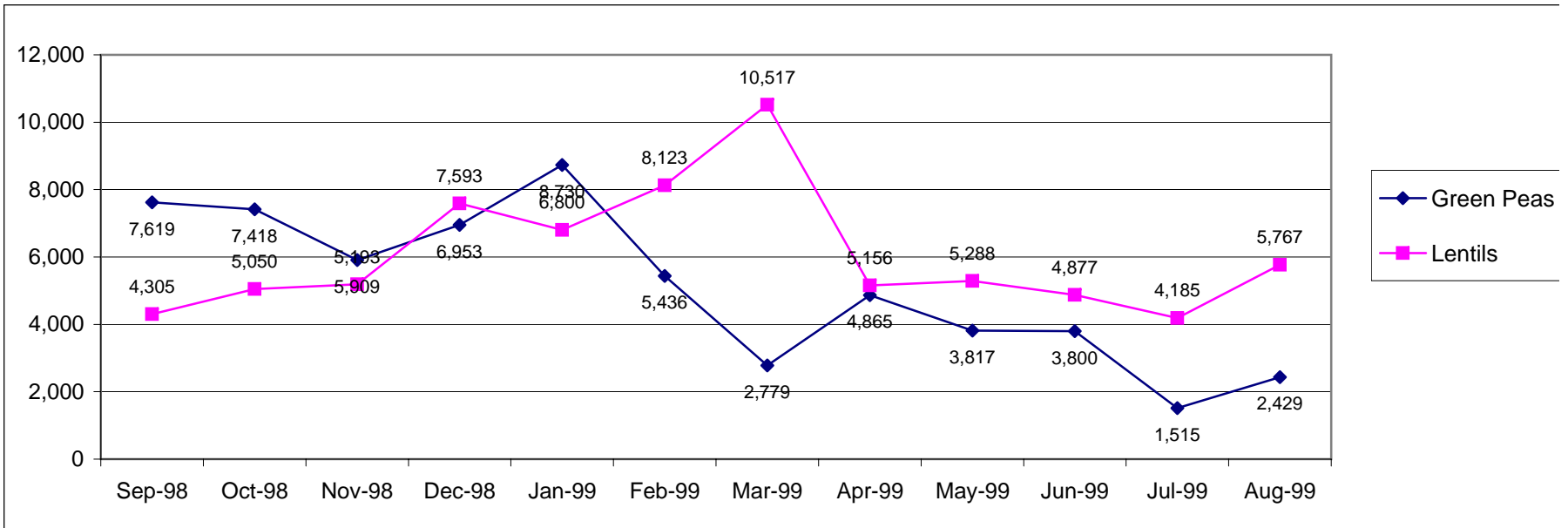
BEANS, DRY: U.S. EXPORTS BY MONTH, September 1998-August 1999

Data in Metric Tons



PEAS, DRY: U.S. EXPORTS BY MONTH, September 1998-August 1999

Data in Metric Tons



CANADIAN EXPORTS BY COUNTRY OF DESTINATION
(Data in Metric Tons, Calander Year)

Country	Lentils			Peas			Pea Beans			Other Beans		
	1999	1998	1997	1999	1998	1997	1999	1998	1997	1999	1998	1997
NORTH AMERICA:												
Barbados	28	21	109	12	14	158						
Bermuda		66	180			22						38
Costa Rica	297	250	170	7	43	47	187	31	59	1313	2951	2827
Cuba	4313	9963	27	182974	135785	87599	1253	6096	107	26456	6293	404
Dominican Rep.	249	389	119	68	321	225				4343	1234	3109
El Salvador										509		
French W.Indies		128	144			6						
Guatemala	21				452					212		165
Haiti				420		258				3885	1991	2878
Honduras		21				21				280	60	
Jamaica & Dep.										562	112	287
Leeward-Windward Is.	207	152								36	42	
Mexico	14227	14924	11447	5385	8797	4967	1070	476	60	646	2314	
Netherlands-Antilles	21				224		62			177		
Nicaragua				641		241				402	61	
Panama	4575	3493	3689	492	1830	148				1422	564	319
St Lucia		84	82		22	3					63	
Trinidad & Tobago	2162	2032	1543	3795	3437	4315	69	67	64	188	211	87
United States	2104	11005	11712	7122	7927	11578	2357	2735	4015	37687	25292	30079
SOUTH AMERICA:												
Argentina	1063	2127	4266	146	85	63						
Bolivia	213	85			43							
Brazil	10531	11699	4608	11315	4093	10087				186	6739	420
Chile	7513	12823	11279	5136	4252	3277				762	449	43
Colombia	46168	31830	40101	30479	36513	30832	344	750	567	14482	6515	10662
Ecuador	8926	11024	13080	6025	5958	5690	64	353	104	84	122	124
Grenada		22	8	28	58	55					4	
Guyana				1337	1023	491						
Paraguay	38	39	21									
Peru	6389	11688	8025	14079	16198	8246		19	320		220	76
Surinam				174	404	24						7
Uruguay	1640	1470	1316	46	143	161				21	21	
Venezuela	13627	13645	12324	14195	13540	17380	20	359	21	2908	3536	3918
EUROPE:												
Albania		816										
Armenia, Republic of	87											
Austria	22			108	21	379				41		
Belgium & Luxembourg	16602	16268	15391	43133	61101	129697	1209	672	220	598	346	146
Bulgaria	2178	1433	1023						20			
Croatia	52	85		11						201	57	296
Cyprus	648	527	710									7
Czech Republic	1026	1066	1229	85				256		128		21
Denmark	127	3	21	215	107						5	13
Finland		20		285						20		
France	16649	12405	11192	18562	1362	287	128	433	313	1729	1086	817
Georgia, Republic of	21			730								
Germany	15375	13765	15804	550	15392	5537	1375	3346	1070	1855	765	1740
Greece	11372	10262	8509	74	43	96		10	174	2833	1854	1906
Hungary		10								4		

CANADIAN EXPORTS BY COUNTRY OF DESTINATION
(Data in Metric Tons, Calander Year)

Country	Lentils			Peas			Pea Beans			Other Beans		
	1999	1998	1997	1999	1998	1997	1999	1998	1997	1999	1998	1997
Iceland										81	38	20
Ireland	108	64		14975	19843	18835	1783	2098	2051		64	59
Italy	18149	17449	14457	24930	6217	13667	1602	2421	3689	10156	7145	7356
Malta Gozo				21	64		43	120	42	20		
Netherlands	3458	4200	4454	20226	24594	9277	380	2749	1243	3441	1205	995
Norway						25						
Poland	172	151	85	192		42					172	
Portugal	685	1020	103	264	758	459	226	19	21	5959	4746	3290
Romania				43	85	42						64
Russian Federation				1358					15			
Slovakia									19		41	
Slovenia										1114	486	778
Spain	21791	25637	25004	382778	379061	286724	1055	373	376	7253	6562	4025
Sweden	182	168	66	573	418	20	3		7	316	148	102
Switzerland	1625	3160		1446	641	21	20	38	21			98
Turkey	41725	11785	12903	190	1152	107			38	1249	1266	1056
Ukraine	43		22									
United Kingdom	3537	2461	1751	452	763	1061	40658	29026	29399	3189	2731	1654
Yugoslavia	73									568	19	60
ASIA:												
Bahrain	10					7						
Bangladesh	315	1926		153966	91266	11980						
China (Mainland)				21048	37393	79170					36	22
Hong Kong				1334	434	291				85		
India	12583	4902	1525	195214	301601	133637				39		
Indonesia				42		875						
Israel	2235	1185	3997	1165	905	856	21	43		850	358	380
Iran			221		298				200	28		
Iraq							350		501		1000	
Japan	151	188	104	12455	25615	44868	650	303	1152	3812	2467	2269
Jordan	795	368	746		64	64	97	98				
Korea			2720	662	2154	568	3025	1983	2093	2279	1567	504
Kuwait	40	213	236		21	4	82	38		57	19	58
Lebanon	2202	4612	3651	60	79	63				478	79	182
Malaysia	213			30159	8822	949	21			60		43
Nepal					149							
Oman											19	114
Pakistan	9390	4303	216	22817	8683	1192						
Philippines				7043	2964	9477		19				
Saudi Arabia	1482	998	1353	3227	2973	2150	1493	2845	788	65	159	282
Singapore			21	28518						16		
Sri Lanka	2926	1781	3241	259	498	1349						
Taiwan				8614	7400	5452						20
Thailand	95			572	620	572						
United Arab Emirates	6886	5128	1091	2375	658	9572		20	145	318	162	64
Viet-Nam, South		21										
Yemen				749	1102	401						
OCEANIA:												
Australia	64	147	194	58540	21500		1810		176	333	251	456
French Pacific Is.			353									
New Zealand	21	4		2	16				133			57
Other Pacific Is.										64		

CANADIAN EXPORTS BY COUNTRY OF DESTINATION
(Data in Metric Tons, Calander Year)

Country	Lentils			Peas			Pea Beans			Other Beans		
	1999	1998	1997	1999	1998	1997	1999	1998	1997	1999	1998	1997
AFRICA:												
Algeria	51075	47454	21251	4722	4730	319	838	597		1693	4626	
Angola			583	1418				21		1399	518	42
Botswana												20
Cape Verde											405	27
Egypt	14679	14148		2004	3042	107						
Ethiopia				9688	383	500						
Fr. Indian Ocean Areas												247
Guinea		880	360	1354		21						
Kenya		1551	67	2771	1892	1065	19					
Liberia	245	1013	180	841								
Libya		64	10									10
Malawi							78	156		660	980	320
Mauritius	366	854	1006	192	31	85				21		10
Morocco	20169	9402	4274	5659	3304	860	1387	102	167		85	64
Mozambique											480	20
Rwanda			700		680				2496			811
Sierra Leone	226	1038	365									101
Somalia			500			149						
So. Africa, Rep of	1675	1425	1634	1154	2802	5828		517		1020	380	697
Tanzania		2880	64	1907	1891				640			80
Tunisia					150							
Uganda	64		21	1008								
Zaire				622	64							
Zimbabwe								21			43	
Others	1534	1392	12704	229	213	3	20		16	323	903	325
Total	410972	374086	316474	1367670	1265704	964993	53848	59211	52975	151148	103032	86704

Source: Agriculture & Agri-Food Canada

**USDA/CCC Purchases of Dry Edible Beans, Peas, & Lentils
Under PL480 Program for Export Distribution (MT)**

CLASS	FY99	FY98	FY97	FY96	FY95	FY94
Pea Bean	19,329	5,070	4,860	2,050	1,290	28,270
Pinto	24,560	9,220	12,238	21,688	64,422	55,320
Great Northern	3,810	230	0	0	0	0
Small Red	6,060	4,120	810	4,983	2,542	7,185
Black	1,740	370	110	420	460	1,390
Light Red Kidney	0	610	0	420	1,080	1,020
Dark Red Kidney	2,160	2,390	4,710	1,261	2,133	1,214
Lentil	27,300	17,510	18,580	20,640	33,660	37,780
Green Pea	28,490	41,420	33,770	48,400	41,045	27,600
Yellow Pea	12,060	8,900	4,041	3,510	5,570	0
Small White	0	0	0	0	210	0
Pink	0	0	0	120	0	0
TOTAL	125,509	89,840	79,119	103,492	152,412	159,779

**USDA Purchases of Canned Dry Beans, Peas and Lentils for Use
in Various Domestic Feeding Programs (1,000 pounds)**

Class	Oct 98-Sep 99	Oct 97-Sep 98	Oct 96-Sep 97	Oct 95-Sep 96	Oct 94-Sep 95	Oct 93-Sep 94
Baby Lima	700	0	350	315	524	455
Blackeye	1,365	665	490	140	735	665
Black	350	105	105	0	140	0
Garbanzo	175	735	420	70	245	3,079
Great Northern	840	665	385	385	315	1,485
Green Pea	0	0	0	13,959	12,110	9,964
Red Kidney	1,855	0	1,295	2,449	1,750	1,680
Pigeon Pea	0	0	0	0	0	356
Pink	1,540	0	875	1,190	1,715	1,865
Pinto	5,949	10,253	3,800	7,278	7,733	5,459
Refried Bean	0	7,836	4,902	4,935	5,080	7,198
Small Red	1,680	0	490	980	3,079	2,869
Vegetarian Bean	14,020	22,894	22,509	20,475	16,523	16,949
Total	28,474	43,153	35,621	52,176	49,949	52,024

**USDA Purchases of Dry Edible Beans, Peas and Lentils for Use
in Various Domestic Feeding Programs (1,000 pounds)**

Class	Oct 98-Sep 99	Oct 97-Sep 98	Oct 96-Sep 97	Oct 95-Sep 96	Oct 94-Sep 95	Oct 93-Sep 94
Baby Lima	403	363	1,613	726	564	645
Blackeye	1,008	1,613	1,532	363	1,371	161
Garbanzo	0	0	0	0	40	0
Great Northern	2,460	2,500	3,709	1,813	2,136	3,386
Green Pea	0	0	0	40	40	0
Green Split Pea	0	0	0	40	282	161
Lentil	0	0	0	40	81	0
Pea Bean	80	16,775	0	0	363	81
Pink	0	0	0	160	0	0
Pinto	18,085	16,155	22,120	14,500	12,692	7,784
Red Kidney	725	1,169	1,815	1,048	1,613	4,838
Small Red	0	0	0	0	40	645
Small White	0	0	0	40	40	0
Total	22,761	38,575	30,789	18,770	19,262	17,701

Source: Fruit and Vegetable Division, USDA

WORLD PULSE PRODUCTION (1,000 Metric Tons)***

COUNTRY	1999	1998	1997	1996	1995	COUNTRY	1998	1997	1996	1995	1994
WORLD	59275	56788	55832	55162	55987	ASIA	29844	26356	27121	27481	26977
AFRICA	7890	7566	7437	7433	7257	Armenia	9	5	5	4	4
Algeria	38	27	28	52	41	Bangladesh	513	518	527	532	533
Angola	68	86	66	175	170	China	5357	4203	4914	5511	6113
Benin	109	84	84	69	76	India	16095	14520	14090	14820	14317
Botswana	16	9	11	14	10	Indonesia	902	872	862	310	259
Burkina Faso	66	66	66	62	62	Iran	566	567	650	650	640
Burundi	262	316	311	327	358	Japan	103	133	133	103	112
Cameroon	101	97	97	97	91	Kazakhstan	16	19	40	55	80
Congo	8	222	229	234	242	Korea	270	306	306	300	200
Egypt	371	586	537	509	362	Myanmar	1895	1188	1289	1029	838
Ethiopia	784	1158	1138	1138	1108	Nepal	213	231	226	210	196
Eritrea	43	33	33	33	45	Pakistan	1123	1024	1099	781	624
Guinea	60	60	60	60	60	Syria	113	190	250	259	188
Kenya	240	250	240	240	270	Tajikistan	8	5	6	6	6
Madagascar	94	84	82	80	80	Thailand	367	333	370	365	381
Mali	120	71	71	82	88	Turkey	1661	1694	1832	1824	1679
Malawi	289	284	280	276	278	Vietnam	245	210	216	216	220
Morocco	214	213	245	257	118	Yemen	74	66	67	70	68
Mozambique	195	191	153	141	134	EUROPE	8270	10186	8801	5811	6970
Niger	649	428	428	428	433	Austria	86	86	102	77	160
Nigeria	2149	1700	1700	1700	1850	Belarus	253	492	310	173	140
Rwanda	149	130	128	117	130	Bosnia Herzg	17	15	16	17	16
South Africa	114	57	82	78	72	Bulgaria	39	43	29	52	45
Sudan	179	175	167	126	107	Croatia	26	24	24	23	24
Tanzania	423	412	375	328	378	Czech Rep	117	105	139	137	163
Tago	39	52	53	49	34	Denmark	388	387	275	300	382
Tunisia	104	92	72	105	79	Estonia	11	17	13	6	1
Uganda	448	346	351	359	510	France	2707	3121	2619	2792	3850
Zaire					200	Germany	797	587	215	215	201
Zimbabwe	49	46	48	45	43	Greece	41	44	44	41	44
NORTH AND CENTRAL AMERIC.	7104	6898	5772	5376	5797	Hungary	141	142	112	130	144
Canada	3270	2851	2313	1819	2090	Italy	138	145	156	174	168
Dominican Rep	69	62	55	76	79	Latvia	2	8	8	6	6
El Salvador	72	73	67	58	51	Lithuania	106	43	50	35	30
Guatemala	129	120	118	117	122	Macedonia	28	28	27	26	25
Haiti	77	90	88	85	63	Moldova Rep	64	58	37	65	70
Honduras	53	51	55	55	38	Poland	277	277	277	250	215
Mexico	1396	1704	1205	1542	1428	Portugal	32	38	38	44	44
Nicaragua	94	85	71	75	88	Romania	47	75	77	97	76
USA	1884	1803	1734	1481	1769	Russian Fed	877	1800	1800	1435	2673
SOUTH AMERICA	3871	3125	3903	3742	3878	Slovakia	98	98	129	147	187
Argentina	375	356	338	284	307	Slovenia	5	5	7	6	9
Brazil	2912	2204	3015	2847	3941	Spain	278	390	282	155	212
Chile	57	89	74	115	92	Sweden	140	169	122	81	67
Colombia	141	140	140	161	217	UK	732	674	558	721	721
Ecuador	44	57	75	63	55	Ukraine	605	1075	1122	1516	2636
Paraguay	80	75	75	60	72	Yugoslavia	116	142	142	113	107
Peru	193	135	135	141	126	OCEANIA	2296	2176	2688	2464	1287
						Australia	2232	2120	2624	2361	1216
						New Zealand	58	51	59	76	66

*** - Latest information available

Source: FAO United Nations

WORLD DRY BEAN PRODUCTION (1,000 Metric Tons)***

COUNTRY	1999	1998	1997	1996	1995	COUNTRY	1999	1998	1997	1996	1995
WORLD	19393	17353	17354	18537	17944	ASIA	10005	8308	8086	9547	8339
AFRICA	1898	2067	2044	2092	2068	Armenia	1	5	5	5	4
Angola	68	86	66	175	34	Bangladesh	85	85	86	84	87
Benin	94	74	74	59	63	China	1810	1513	1313	1591	1411
Burundi	227	280	271	288	319	India	4550	3600	3600	4683	3900
Cameroon	95	91	91	91	72	Indonesia	900	870	870	860	810
Chad	53	24	24	15	17	Iran	183	140	140	140	150
Congo	130	146	149	155	154	Japan	102	130	130	130	100
Egypt	25	25	24	23	14	Kazakhstan	9	3	3	12	20
Ethiopia	102	410	400	400	390	Korea D P Rep	270	270	270	270	250
Lesotho	9	8	14	7	5	Korea Rep	24	29	29	28	19
Madagascar	82	72	70	68	50	Myanmar	1207	844	844	935	966
Malawi	92	90	89	85	87	Nepal	23	25	25	25	25
Morocco	11	8	8	8	8	Pakistan	115	115	115	118	110
Rwanda	140	120	120	105	118	Philippines	26	35	35	35	32
South Africa	94	42	67	63	57	Sri Lanka	15	21	21	20	20
Sudan	13	12	11	8	7	Thailand	245	236	212	250	240
Tanzania	255	250	230	280	230	Turkey	242	235	235	230	225
Togo	33	46	47	43	29	Viet Nam	144	110	110	115	115
Uganda	300	220	221	234	387	EUROPE	526	594	672	567	568
Zimbabwe	46	43	45	42	40	Albania	26	21	21	23	20
NORTH AND CENTRAL AMERICA	3291	3460	2850	3143	3317	Belarus	100	155	205	129	75
Belize	5	5	5	3	3	Bosnia Herzg	14	13	13	13	14
Canada	285	161	161	117	200	Bulgaria	23	25	25	19	35
Costa Rica	17	14	22	23	45	Croatia	22	21	21	20	20
Cuba	16	18	18	18	18	France	10	10	10	10	10
Dominican Rep	26	30	28	37	37	Greece	22	24	24	25	23
El Salvador	72	73	67	58	51	Ireland	17	17	17	17	17
Guatemala	93	84	82	115	100	Italy	22	22	22	24	27
Haiti	36	50	50	49	30	Latvia	1	3	2	1	1
Honduras	53	51	55	55	38	Macedonia	14	11	11	11	12
Mexico	1085	1475	965	1349	1278	Moldova	24	27	27	14	15
Nicaragua	94	85	71	75	80	Netherlands	6	5	5	8	5
Panama	3	5	5	5	6	Poland	44	48	43	41	101
USA	1507	1409	1323	1268	1406	Portugal	15	15	14	15	16
SOUTH AMERICA	3622	2886	3664	3485	3565	Romania	25	47	47	42	42
Argentina	310	299	281	227	240	Russian Fed	4	2	3	5	4
Bolivia	13	12	12	12	13	Slovenia	3	2	2	4	4
Brazil	2889	2179	2990	2822	2913	Spain	24	22	27	37	34
Chile	31	52	37	66	56	Ukraine	45	18	46	40	42
Colombia	140	139	139	160	160	Yugoslavia	45	69	69	60	70
Ecuador	31	41	41	42	33	OCEANIA	51	38	37	50	50
Paraguay	70	68	68	52	46	Australia	51	38	37	50	50
Peru	104	61	61	69	60						
Uruguay	3	3	3	3	3						
Venezuela	31	32	32	31	42						

*** - Latest information available

Source: FAO United Nations

WORLD GARBANZO (CHICK-PEA) PRODUCTION (1,000 Metric Tons)***

COUNTRY	1999	1998	1997	1996	1995	COUNTRY	1999	1998	1997	1996	1995
WORLD	9244	8829	8633	7947	8016	ASIA	8488	8010	7876	7098	7307
AFRICA	296	296	272	293	265	Bangladesh	60	60	61	62	60
Algeria	13	16	16	24	16	China	5	5	3	3	3
Egypt	15	9	9	11	12	India	6700	6000	6000	5020	5406
Eritrea	1	1	1	1	1	Iran	249	280	267	350	340
Ethiopia	139	128	127	127	126	Iraq	8	8	8	8	9
Malawi	41	40	39	39	39	Israel	8	7	7	9	6
Morocco	28	40	40	29	12	Jordan	0	2	2	3	2
Sudan	10	9	8	8	5	Kazakhstan	0	1	1	5	10
Tanzania	23	22	21	30	22	Lebanon	11	11	11	10	10
Tunisia	22	28	8	30	9	Myanmar	69	90	90	121	77
Uganda	3	3	3	3	3	Nepal	13	14	14	14	16
NORTH AND CENTRAL AMEI	211	190	201	223	116	Pakistan	700	774	594	680	559
Mexico	211	190	201	223	116	Syria	29	96	59	46	53
SOUTH AMERICA	7	8	8	15	26	Turkey	600	625	720	732	730
Argentina	3	2	2	2	2	Yemen	39	36	36	36	38
Chile	0	4	4	10	11	EUROPE	43	85	85	111	48
Colombia	0	0	0	0	0	Bulgaria	4	4	4	2	4
Peru	3	2	2	2	2	Greece	2	2	2	2	2
						Italy	5	3	3	3	3
						Portugal	2	9	9	8	9
						Spain	30	66	66	96	31
						OCEANIA	198	240	191	278	258
						Australia	198	240	191	278	258

*** - Latest information available

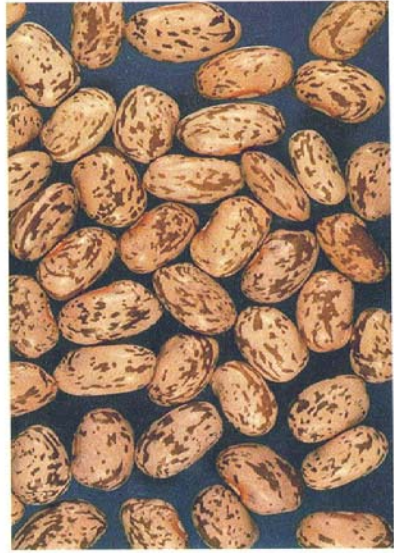
Source: FAO United Nations

WORLD PEA PRODUCTION (1,000 Metric Tons)***

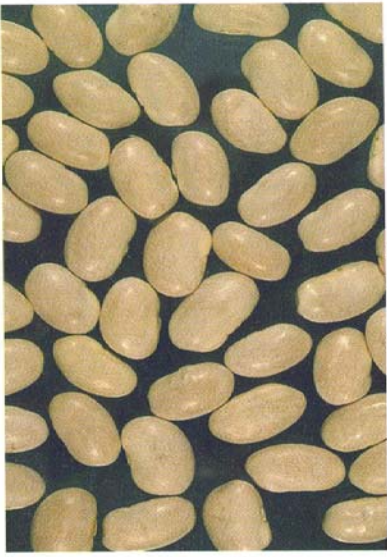
COUNTRY	1999	1998	1997	1996	1995	COUNTRY	1999	1998	1997	1996	1995
WORLD	11699	12932	12353	10851	11535						
AFRICA	273	354	353	379	335	Japan	1	1	1	1	1
Algeria	3	1	1	5	3	Kazakhstan	7	11	15	23	24
Burundi	32	24	37	36	37	Myanmar	379	30	30	27	25
Congo, D R	40	65	68	70	73	Pakistan	78	82	79	78	74
Congo, Rep	32	4	4	4	4	Turkey	3	4	4	4	4
Egypt	0	3	3	3	4	EUROPE	6039	7363	7530	6370	4017
Eritrea	1	1	1	1		Austria	80	80	80	93	60
Ethiopia	98	165	160	160	150	Belarus	153	217	280	181	112
Lesotho	3	3	3	4	2	Bel-Lux	10	9	9	9	15
Morocco	11	16	16	28	4	Bulgaria	9	12	12	8	14
Rwanda	8	10	8	12	12	Croatia	1	1	1	1	
South Africa	1	2	2	2	3	Czech Rep	105	93	93	127	130
Tanzania	27	25	22	30	22	Denmark	386	384	384	257	400
Tunisia	14	3	3	10	2	Estonia	5	18	11	13	6
Uganda	22	18	20	17	16	Finland	11	13	13	13	11
NORTH AND CENTRAL AMERICA	2516	2610	2067	1402	1687	France	2612	3311	3052	2552	2698
Canada	2252	2300	1762	1245	1455	Germany	609	399	399	30	21
Jamaica	2	2	2	3	4	Greece	0	0	0	0	0
Mexico	1	2	2	2	2	Hungary	131	140	130	101	143
USA	261	305	300	151	223	Ireland	2	2	2	2	2
SOUTH AMERICA	82	75	75	78	116	Italy	19	15	15	12	20
Argentina	35	30	30	30	31	Latvia	1	9	6	6	5
Bolivia	4	4	4	4	4	Lithuania	15	19	19	26	24
Chile	1	3	3	3	4	Macedonia	3	2	2	2	2
Colombia	0	0	0	0	0	Moldova Rep	3	31	31	19	40
Ecuador	3	7	7	9	4	Netherlands	5	5	5	8	5
Paraguay	3	1	1	2	2	Poland	55	63	55	67	57
Peru	31	26	26	25	25	Romania	21	24	27	34	54
Uruguay	3	3	3	3	3	Russian Fed	680	775	1419	1408	1212
Venezuela	0	0	0	0	1	Slovakia	57	62	58	89	108
ASIA	2396	2135	1975	2045	2068	Slovenia	2	2	2	2	1
Bangladesh	14	14	14	29	26	Spain	48	73	70	5	4
China	1300	1240	1080	1300	1000	Sweden	85	188	114	40	22
India	600	740	740	580	600	UK	355	297	297	240	267
						Ukraine	510	1085	901	985	1376
						Yugoslavia	21	21	21	24	20
						OCEANIA	393	395	353	576	537
						Australia	336	340	303	530	465
						New Zealand	57	55	50	46	72

*** - Latest information available

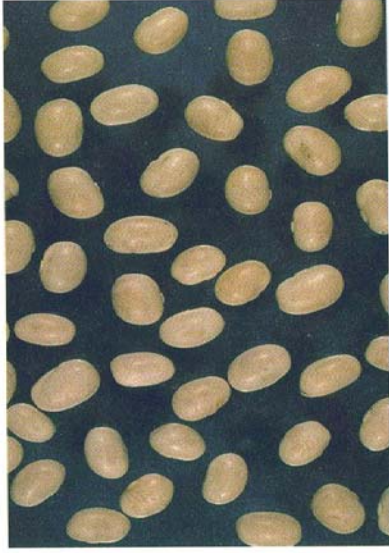
Source: FAO United Nations



Pinto



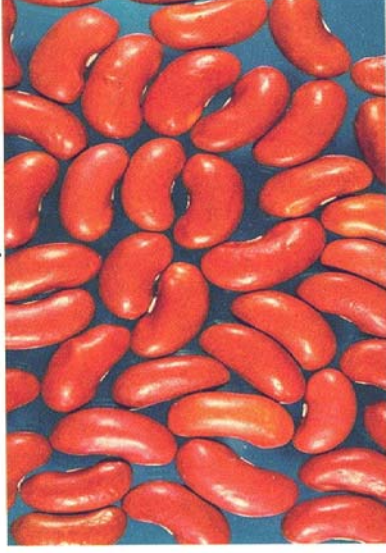
Great Northern



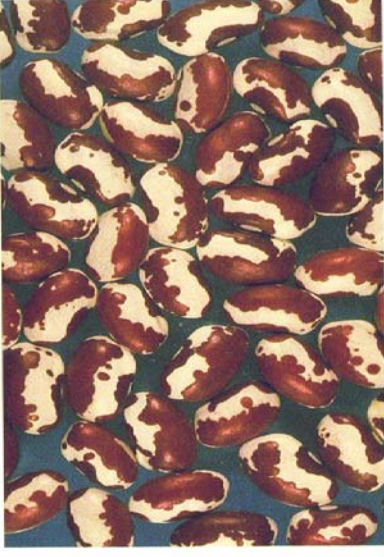
Navy



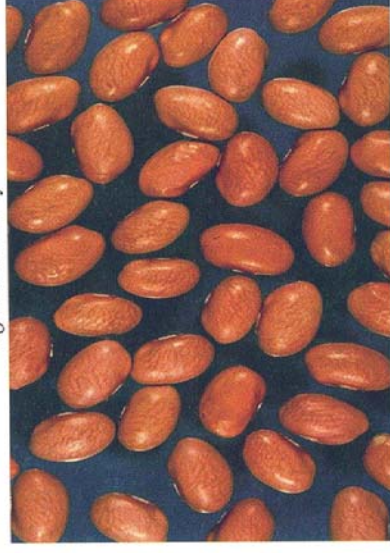
Black



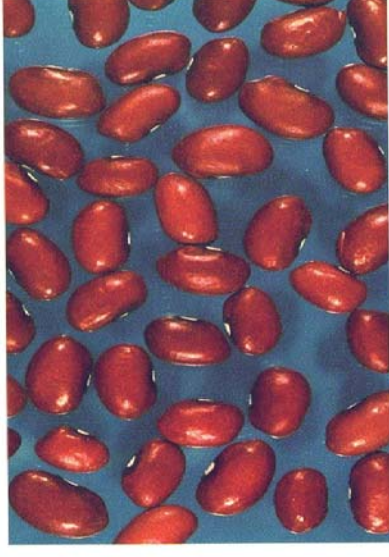
Light Red Kidney



Anasazi



Pink



Small Red