



UNITED STATES DEPARTMENT OF  
**AGRICULTURE**

**2004**  
**Dry Edible Bean**  
**Market News Summary**

**Published by:**  
**United States Department of Agriculture**  
**Agricultural Marketing Service**  
**Livestock & Grain Market News**  
**711 'O' Street**  
**Greeley, CO 80631**



# USDA - AMS, LIVESTOCK AND GRAIN MARKET NEWS

711 "O" Street

Greeley, Colorado 80631

Telephone: (970) 353-9750 FAX: (970) 353-9790

Internet Access: WWW.AMS.USDA.GOV



## TABLE OF CONTENTS

<b>Dealer Price Trends - Graphs.....</b>	<b>1 - 4</b>
Pinto - Northern Colorado.....	1
Pinto - North Dakota/Minnesota.....	2
Pea Bean - Michigan.....	3
Great Northern - Western Nebraska/Eastern Wyoming.....	4
<b>Monthly Average Prices.....</b>	<b>5 - 14</b>
Dealer - Pinto, Great Northern, Small Red, Pink.....	5
Grower - Pinto, Great Northern, Small Red, Pink.....	6
Dealer - Black, Cranberry, Light Red Kidney.....	7
Grower - Black, Cranberry, Light Red Kidney.....	8
Dealer - Small White, Pea Bean, Dark Red Kidney.....	9
Grower - Small White, Pea Bean, Dark Red Kidney.....	10
Dealer - Austrian Winter Pea, Lentil, Green Pea Split and Whole, Yellow Pea Split and Whole.....	11
Grower - Austrian Winter Pea, Lentil, Green Pea Split and Whole, Yellow Pea Split and Whole.....	12
Dealer - Light Red Kidney, Baby Lima, Large Lima, Blackeye, Pink, Garbanzo (California).....	13
Grower - Light Red Kidney, Baby Lima, Large Lima, Blackeye, Pink, Garbanzo (California).....	14
<b>Dry Edible Beans, U.S. Production by Commercial Class FY Total and Canadian Crop Production.....</b>	<b>15</b>
<b>Dry Edible Beans, Production by Commercial Class by State.....</b>	<b>16 - 17</b>
<b>Dry Bean, Pea, and Lentil Production - USDA, NASS.....</b>	<b>18</b>
<b>Dry Pea and Lentil Production - USADPLC.....</b>	<b>19</b>
<b>Dry Bean, U.S. Exports by Country of Destination.....</b>	<b>20 - 21</b>

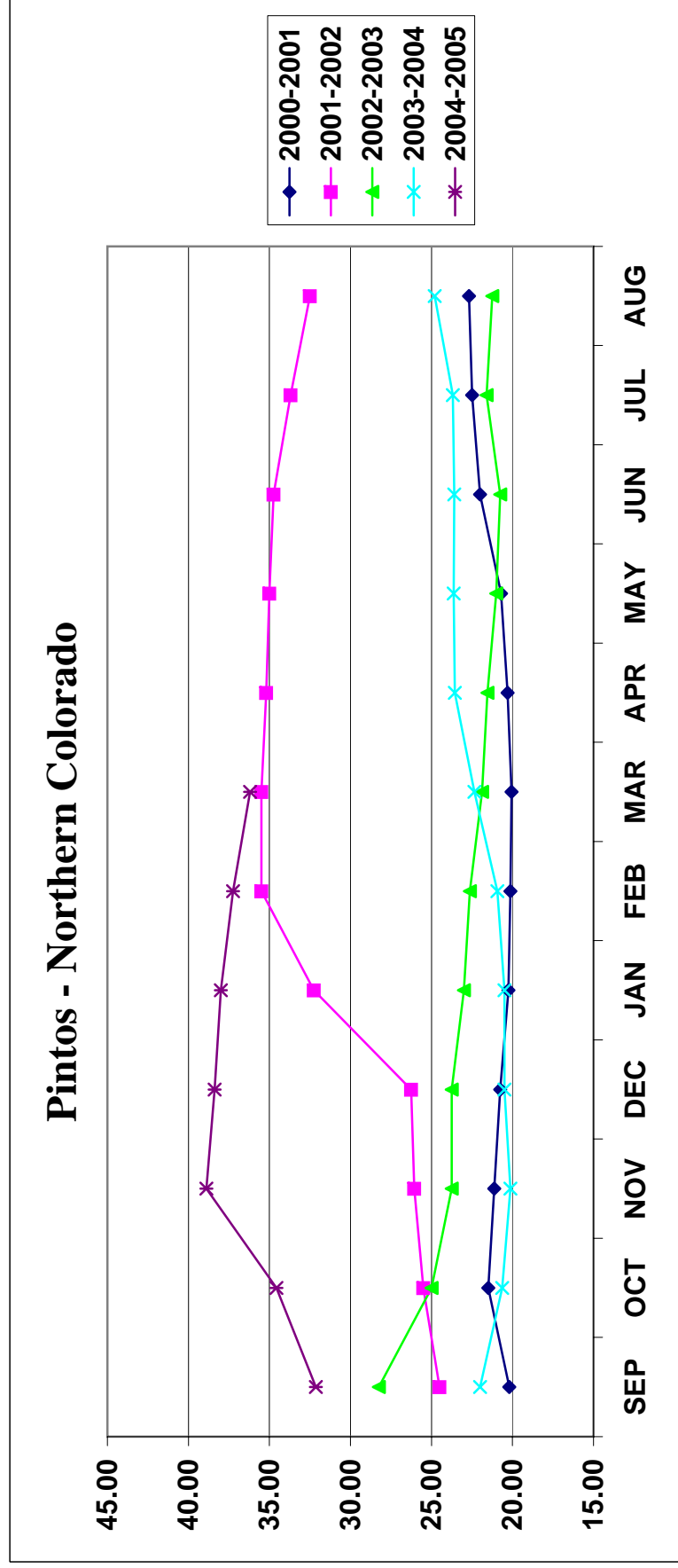
Dry Pea, U.S. Exports by Country of Destination.....	22 - 23
U.S. Exports, Dry Beans and Dry Ripe Peas FY Totals.....	24
U.S. Exports, by Month, Dry Beans - Graphs.....	25 - 28
Pea Bean, Great Northern, Large Lima, Baby Lima.....	25
Light Red Kidney, Dark Red Kidney, Pinto, Black.....	26
Seed Beans, Small Reds, White n.e.c., Beans n.e.c.....	27
Green Pea, Lentil, Seed Pea, Yellow Pea.....	28
Canadian Exports by Country of Destination.....	29 - 30
USDA/CCC Purchases of Dry Edible Beans, Peas, and Lentils.....	30
USDA/F&V Purchases for Domestic Feeding Programs.....	31
World Pulse Production.....	32
World Dry Bean Production.....	33
World Garbanzo Production.....	34
World Pea Production.....	35

# Dealer Monthly Average Price

Per Cwt By Crop Year Fob

## PINTOS - NORTHERN COLORADO

	SEP	OCT	NOV	DEC	JAN	FEB	MAR	APR	MAY	JUN	JUL	AUG	AVG
<b>2000-2001</b>	20.19	21.50	21.13	20.75	20.25	20.13	20.06	20.31	20.70	22.00	22.50	22.69	21.02
<b>2001-2002</b>	24.50	25.50	26.06	26.25	32.25	35.50	35.50	35.20	35.00	34.75	33.70	32.50	31.39
<b>2002-2003</b>	28.25	25.00	23.75	23.75	23.00	22.63	21.88	21.55	21.00	20.75	21.60	21.25	22.87
<b>2003-2004</b>	22.00	20.63	20.13	20.50	20.50	20.94	22.35	23.56	23.63	23.60	23.69	24.80	22.19
<b>2004-2005</b>	32.13	34.56	38.90	38.38	38.00	37.25	36.20						36.49

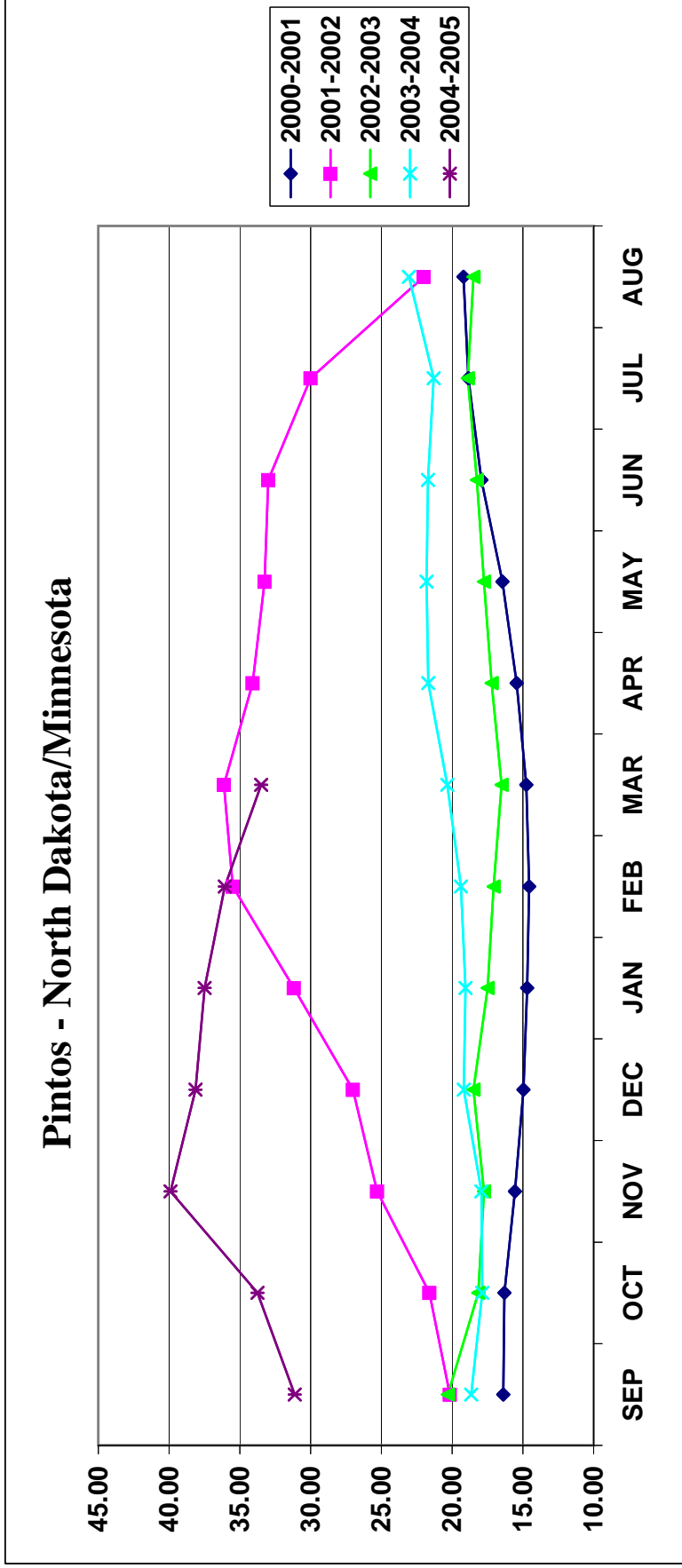


# Dealer Monthly Average Price

## Per Cwt By Crop Year Fob

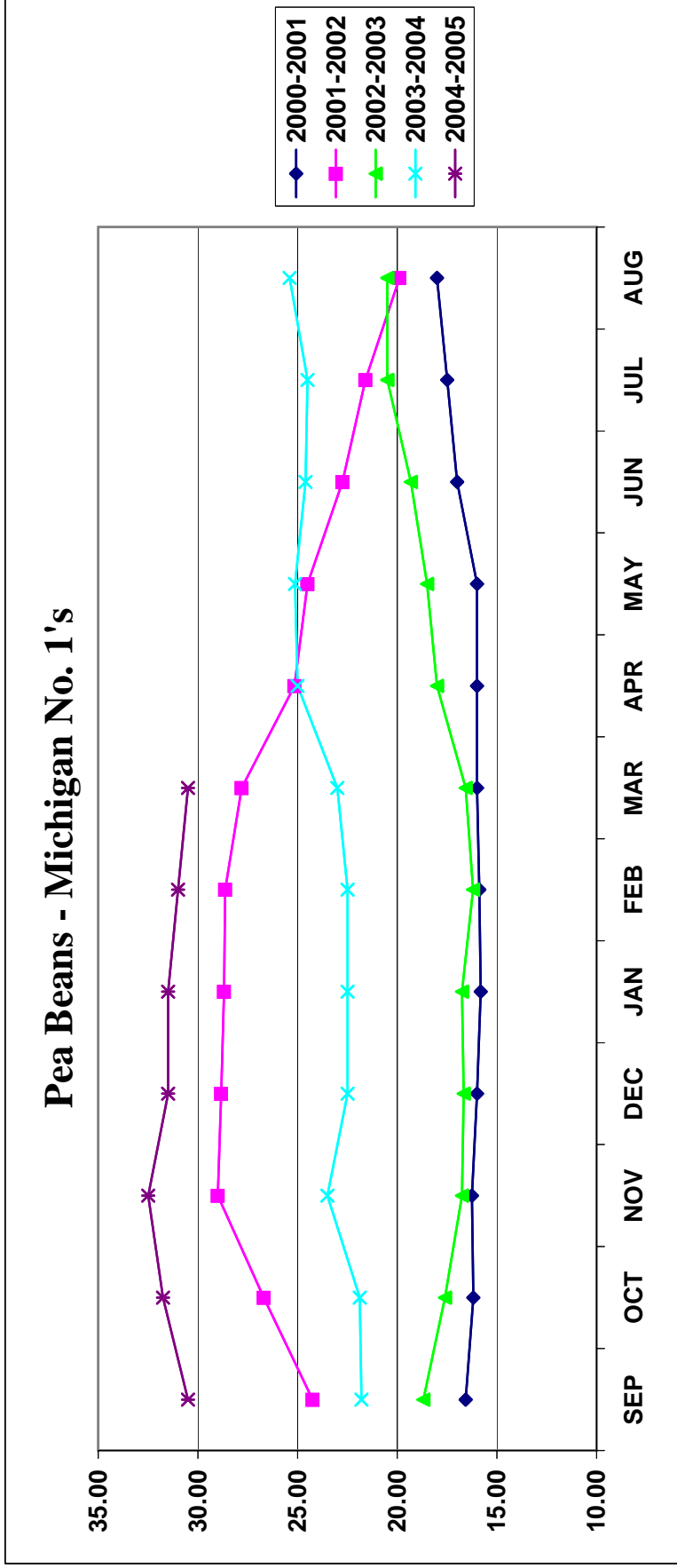
### PINTOS - NORTH DAKOTA/MINNESOTA

	SEP	OCT	NOV	DEC	JAN	FEB	MAR	APR	MAY	JUN	JUL	AUG	AVG
2000-2001	16.38	16.30	15.56	14.96	14.69	14.56	14.76	15.44	16.45	17.94	18.85	19.19	16.26
2001-2002	20.17	21.60	25.31	27.00	31.19	35.50	36.13	34.10	33.25	33.00	30.00	22.00	29.10
2002-2003	20.31	18.15	17.75	18.50	17.50	17.06	16.50	17.20	17.75	18.25	18.90	18.50	18.03
2003-2004	18.65	17.88	17.94	19.17	19.06	19.38	20.35	21.69	21.81	21.70	21.31	23.06	20.17
2004-2005	31.13	33.75	39.90	38.13	37.50	36.06	33.50						35.71



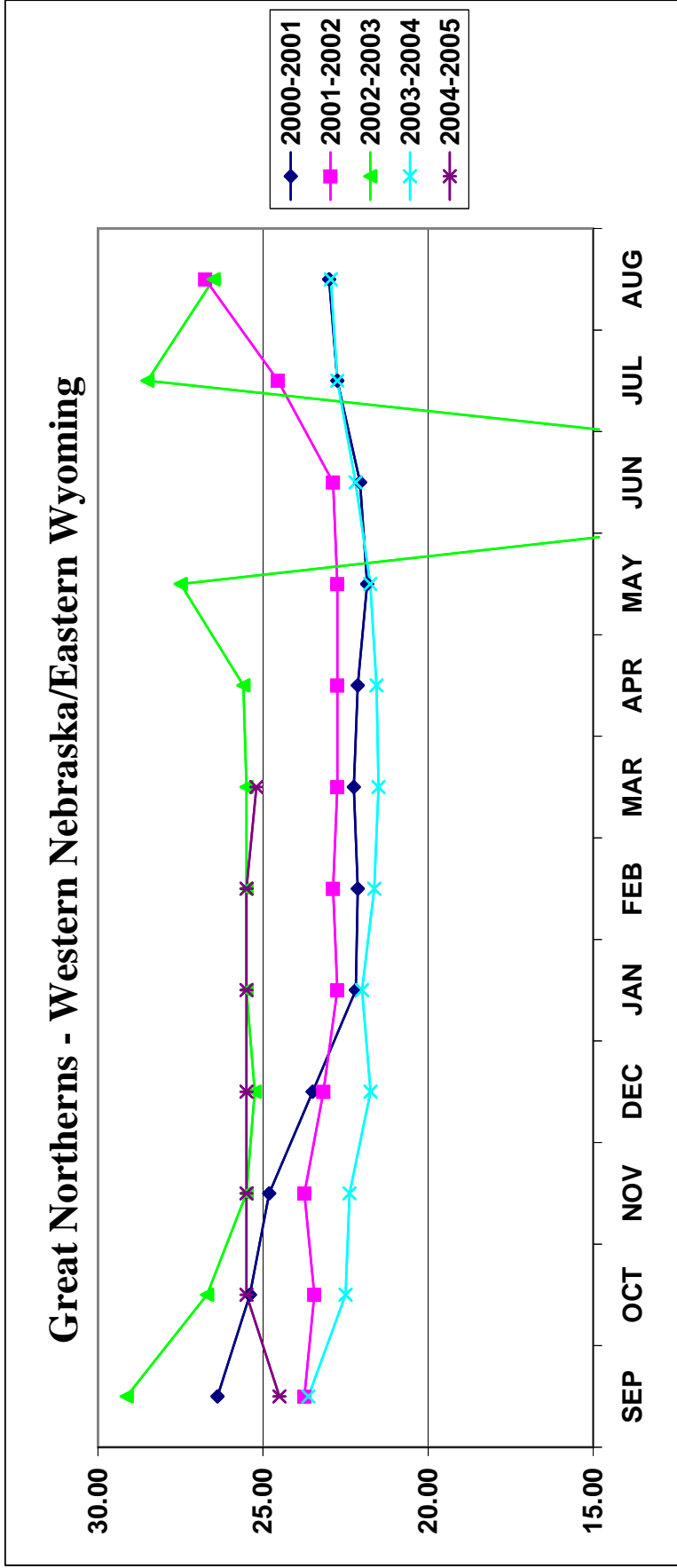
## Dealer Monthly Average Price Per Cwt By Crop Year Fob PEA BEANS - MICHIGAN No. 1's

	SEP	OCT	NOV	DEC	JAN	FEB	MAR	APR	MAY	JUN	JUL	AUG	AVG
2000-2001	16.56	16.18	16.25	16.00	15.81	15.88	16.00	16.00	16.00	17.00	17.50	18.00	16.43
2001-2002	24.25	26.70	29.00	28.83	28.69	28.63	27.81	25.15	24.50	22.75	21.60	19.88	25.65
2002-2003	18.69	17.60	16.75	16.67	16.75	16.19	16.56	18.00	18.50	19.31	20.50	20.50	18.00
2003-2004	21.80	21.88	23.50	22.50	22.50	22.50	23.00	25.00	25.13	24.60	24.50	25.40	23.53
2004-2005	30.50	31.75	32.50	31.50	31.50	31.00	30.50						31.32



# Dealer Monthly Average Price Per Cwt By Crop Year Fob GREAT NORTHERNS - WESTERN NEBRASKA/EASTERN WYOMING

	SEP	OCT	NOV	DEC	JAN	FEB	MAR	APR	MAY	JUN	JUL	AUG	AVG
2000-2001	26.38	25.40	24.81	23.50	22.19	22.13	22.25	22.13	21.85	22.06	22.75	23.00	23.20
2001-2002	23.75	23.45	23.75	23.17	22.75	22.88	22.75	22.75	22.75	22.88	24.55	26.75	23.52
2002-2003	29.13	26.70	25.50	25.25	25.50	25.50	25.50	25.60	27.50	NE	28.50	26.50	26.47
2003-2004	23.63	22.50	22.38	21.74	22.00	21.63	21.50	21.56	21.75	22.20	22.75	22.95	22.22
2004-2005	24.50	25.50	25.50	25.50	25.50	25.50	25.20						25.31



## Dealer Monthly Average Price Per Cwt By Crop Year Fob

	SEP	OCT	NOV	DEC	JAN	FEB	MAR	APR	MAY	JUN	JUL	AUG	AVG
<b>PINTO - Northern Colorado</b>													
2000-2001	20.19	21.50	21.13	20.75	20.25	20.13	20.06	20.31	20.70	22.00	22.50	22.69	21.02
2001-2002	24.50	25.50	26.06	26.25	32.25	35.50	35.50	35.20	35.00	34.75	33.70	32.50	31.39
2002-2003	28.25	25.00	23.75	23.75	23.00	22.63	21.88	21.55	21.00	20.75	21.60	21.25	22.87
2003-2004	22.00	20.63	20.13	20.50	20.50	20.94	22.35	23.56	23.63	23.60	23.69	24.80	22.19
2004-2005	32.13	34.56	38.90	38.38	38.00	37.25	36.20						36.49
<b>PINTO - North Dakota/Minnesota</b>													
2000-2001	16.38	16.30	15.56	14.96	14.69	14.56	14.76	15.44	16.45	17.94	18.85	19.19	16.26
2001-2002	20.17	21.60	25.31	27.00	31.19	35.50	36.13	34.10	33.25	33.00	30.00	22.00	29.10
2002-2003	20.31	18.15	17.75	18.50	17.50	17.06	16.50	17.20	17.75	18.25	18.90	18.50	18.03
2003-2004	18.65	17.88	17.94	19.17	19.06	19.38	20.35	21.69	21.81	21.70	21.31	23.06	20.17
2004-2005	31.13	33.75	39.90	38.13	37.50	36.06	33.50						35.71
<b>PINTO - Idaho</b>													
2000-2001	22.13	22.50	22.50	21.83	21.06	20.94	21.50	21.75	22.70	24.25	24.50	24.50	22.51
2001-2002	25.17	26.00	27.25	27.50	33.13	36.00	36.38	36.70	36.88	36.13	35.10	33.38	32.47
2002-2003	29.63	28.40	27.00	26.83	26.50	26.50	26.38	25.50	25.00	24.13	23.75	23.88	26.13
2003-2004	24.25	23.38	22.50	22.50	22.50	22.63	23.60	24.38	24.50	24.50	24.50	24.50	23.65
2004-2005	33.50	35.13	40.10	39.75	39.50	38.75	37.90						37.80
<b>GREAT NORTHERN - Western Nebraska/Eastern Wyoming</b>													
2000-2001	26.38	25.40	24.81	23.50	22.19	22.13	22.25	22.13	21.85	22.06	22.75	23.00	23.20
2001-2002	23.75	23.45	23.75	23.17	22.75	22.88	22.75	22.75	22.75	22.88	24.55	26.75	23.52
2002-2003	29.13	26.70	25.50	25.25	25.50	25.50	25.50	25.60	27.50	NE	28.50	26.50	26.47
2003-2004	23.63	22.50	22.38	21.75	22.00	21.63	21.50	21.56	21.75	22.20	22.75	22.95	22.22
2004-2005	24.50	25.50	25.50	25.50	25.50	25.50	25.20						25.31
<b>SMALL RED - Idaho/Washington</b>													
2000-2001	23.25	24.00	24.25	24.00	24.38	24.19	24.00	23.58	23.85	24.25	25.65	26.50	24.33
2001-2002	26.42	28.40	32.25	32.58	34.63	35.50	35.75	35.90	35.63	35.00	35.00	33.25	33.36
2002-2003	26.00	28.83	29.00	29.00	29.00	29.00	29.00	29.00	29.50	29.38	28.75	29.25	28.81
2003-2004	28.60	28.50	28.50	28.50	28.50	28.50	28.50	28.50	28.50	28.50	28.50	28.70	28.53
2004-2005	30.88	31.75	32.50	32.50	32.50	32.50	32.50						32.16
<b>PINK - Idaho/Washington</b>													
2000-2001	22.94	23.75	23.56	23.25	23.44	23.50	23.00	22.92	23.40	24.31	24.70	25.75	23.71
2001-2002	26.58	28.50	31.63	32.25	33.56	34.50	34.63	35.30	34.75	34.50	34.50	33.25	32.83
2002-2003	26.00	29.00	28.50	28.50	28.50	28.50	28.50	28.50	28.50	28.50	28.50	28.50	28.33
2003-2004	28.38	28.00	28.00	28.00	28.00	28.00	28.40	28.50	28.50	28.50	28.50	28.65	28.29
2004-2005	30.88	31.75	32.30	32.50	32.50	32.50	32.40						32.12

NE=Not Established  
NA=Not Available  
W=Withdrawn



# Grower Monthly Average Price

Per Cwt By Crop Year Fob

	SEP	OCT	NOV	DEC	JAN	FEB	MAR	APR	MAY	JUN	JUL	AUG	AVG
<b>PINTO - Northern Colorado</b>													
2000-2001	14.63	15.00	15.00	15.00	14.38	14.50	14.75	15.00	15.00	15.75	16.60	17.25	15.24
2001-2002	20.33	19.50	19.38	19.00	23.88	25.00	27.00	28.00	28.00	28.00	25.90	23.00	23.92
2002-2003	20.38	16.60	15.00	15.00	15.00	14.88	14.00	14.00	16.00	16.00	16.00	16.00	15.74
2003-2004	15.60	14.00	14.63	14.50	15.00	15.00	16.20	17.00	17.50	17.50	17.50	17.90	16.03
2004-2005	26.38	26.56	28.20	28.50	28.25	28.00	28.00						27.70

## PINTO - North Dakota/Minnesota

2000-2001	11.75	12.30	11.94	11.67	10.38	10.38	10.63	11.19	11.95	13.13	14.30	14.50	12.01
2001-2002	16.17	17.15	20.25	22.33	25.75	29.75	31.50	30.60	30.50	30.75	27.10	20.25	25.18
2002-2003	15.38	14.50	14.00	13.83	13.00	12.63	12.63	13.00	13.50	13.75	14.60	14.63	13.79
2003-2004	14.40	14.00	14.00	14.33	14.63	15.13	16.00	17.00	17.94	17.70	17.50	17.50	15.84
2004-2005	23.75	28.88	33.40	32.00	32.00	31.00	28.80						29.98

## PINTO - Idaho

2000-2001	15.75	17.30	16.63	15.50	15.38	15.38	15.50	15.75	16.80	18.50	18.80	19.13	16.70
2001-2002	19.83	20.00	20.38	21.00	24.38	27.75	29.75	29.50	29.50	29.50	29.50	29.50	25.88
2002-2003	21.00	19.60	18.50	18.50	18.00	18.38	17.50	17.50	18.00	18.00	18.00	18.06	18.42
2003-2004	19.13	17.75	16.50	16.50	17.50	18.00	18.50	19.00	19.13	19.50	19.50	19.50	18.38
2004-2005	25.25	26.13	29.40	30.00	30.00	30.00	29.50						28.61

## GREAT NORTHERN - Western Nebraska/Eastern Wyoming

2000-2001	16.38	16.00	15.75	15.00	14.50	14.00	14.50	15.00	15.00	15.00	15.10	16.13	15.20
2001-2002	16.50	16.50	16.38	16.33	16.00	16.00	16.00	16.00	16.00	16.00	17.20	19.00	16.49
2002-2003	20.00	18.70	18.00	18.00	18.00	18.00	18.00	18.30	19.38	21.00	21.80	20.00	19.10
2003-2004	17.20	15.88	15.00	15.00	15.00	15.00	15.00	15.00	15.00	15.00	15.00	15.00	15.26
2004-2005	16.42	17.50	17.50	17.50	17.50	17.50	17.50						17.35

## SMALL RED - Idaho/Washington

2000-2001	15.13	15.50	15.50	15.50	15.38	15.00	15.00	15.38	15.50	16.00	16.50	16.50	15.57
2001-2002	18.00	19.20	21.13	24.00	25.00	25.50	25.50	25.50	25.50	25.50	25.50	25.50	23.82
2002-2003	20.50	20.00	20.00	20.00	20.00	19.63	19.50	19.50	20.00	20.00	20.00	20.00	19.93
2003-2004	21.40	21.00	21.00	21.00	21.00	21.00	20.60	20.50	20.50	20.70	20.88	20.50	20.84
2004-2005	22.33	22.50	22.50	22.50	22.50	22.50	22.80						22.52

## PINK - Idaho/Washington

2000-2001	14.50	14.90	15.50	15.50	15.50	15.25	15.00	15.38	15.80	16.25	16.60	16.50	15.56
2001-2002	18.83	19.10	21.63	24.50	24.75	25.50	25.63	26.00	25.88	25.50	25.50	25.50	24.03
2002-2003	20.50	20.00	20.00	20.00	20.00	19.63	19.50	19.80	20.00	20.00	20.00	20.00	19.95
2003-2004	20.50	20.50	20.00	20.00	20.00	20.00	20.40	20.50	20.50	20.50	20.50	20.50	20.33
2004-2005	22.33	22.63	20.95	22.50	22.50	22.50	22.60						22.29

NE=Not Established  
 NA=Not Available  
 W=Withdrawn

## Dealer Monthly Average Price Per Cwt By Crop Year Fob

	SEP	OCT	NOV	DEC	JAN	FEB	MAR	APR	MAY	JUN	JUL	AUG	AVG
<b>BLACK - Michigan</b>													
2000-2001	17.19	15.80	16.06	15.75	15.56	15.88	16.19	16.06	18.85	23.19	24.10	25.38	18.33
2001-2002	33.50	36.60	37.63	38.00	39.84	40.56	41.16	40.60	38.88	38.00	36.50	28.00	37.44
2002-2003	19.75	17.75	17.56	18.00	18.50	18.00	17.69	17.80	18.13	20.13	23.75	23.81	19.24
2003-2004	22.50	22.63	23.50	23.50	23.50	23.50	24.30	26.94	27.38	26.50	25.63	25.80	24.64
2004-2005	28.56	28.00	26.50	26.50	26.88	27.50	27.50						27.35
<b>BLACK - New York</b>													
2000-2001	18.50	16.80	16.63	16.50	16.47	16.53	16.75	16.63	17.90	21.72	23.00	24.00	18.45
2001-2002	NE	35.25	37.50	35.83	37.00	38.00	37.31	36.85	36.00	35.38	34.25	31.50	35.90
2002-2003	20.88	19.85	19.50	19.50	19.25	19.25	19.25	19.25	19.25	19.94	22.90	23.13	20.16
2003-2004	22.38	22.50	23.25	23.50	23.50	23.50	23.95	25.38	25.31	25.50	25.38	24.63	24.07
2004-2005	28.00	26.31	26.50	26.50	26.50	26.50	26.50						26.69
<b>CRANBERRY - Michigan</b>													
2000-2001	29.38	29.05	29.06	27.83	26.38	26.13	25.56	25.81	26.10	25.63	25.70	26.33	26.91
2001-2002	32.50	35.10	36.31	36.50	36.50	36.50	36.50	NE	34.50	34.50	34.50	NE	35.34
2002-2003	26.50	25.70	25.50	25.50	24.50	24.31	24.25	24.40	23.75	23.69	23.50	23.38	24.58
2003-2004	28.50	28.50	28.50	28.50	28.50	28.50	28.40	28.38	28.88	28.90	28.69	27.83	28.51
2004-2005	33.63	33.63	34.80	34.50	34.25	33.75	34.10						34.09
<b>LIGHT RED KIDNEY - Michigan</b>													
2000-2001	27.13	26.25	26.00	26.17	25.44	24.75	24.50	25.00	24.90	24.22	24.80	24.63	25.32
2001-2002	26.50	30.30	35.88	35.67	36.00	36.13	36.00	35.55	35.50	34.88	32.10	34.00	34.04
2002-2003	29.13	27.70	27.50	28.08	28.50	28.69	30.00	30.50	31.50	31.50	31.50	31.50	29.68
2003-2004	29.10	28.50	29.00	36.50	29.50	29.50	29.50	29.88	30.25	30.60	30.50	30.67	30.29
2004-2005	37.25	37.00	36.60	36.50	37.25	37.50	36.50						36.94
<b>LIGHT RED KIDNEY - New York</b>													
2000-2001	26.34	26.20	26.00	25.75	25.50	25.13	25.38	25.25	25.40	25.00	24.70	24.63	25.44
2001-2002	26.50	30.48	35.06	35.92	36.50	37.38	37.00	36.50	35.94	34.44	33.00	31.88	34.22
2002-2003	31.00	28.55	28.50	28.50	28.50	29.13	30.44	30.70	31.00	31.38	31.50	31.50	30.06
2003-2004	29.10	28.50	28.88	29.50	29.50	29.50	29.50	29.88	30.25	30.30	30.50	31.00	29.70
2004-2005	NE	36.50	36.50	36.50	36.50	36.50	36.50						36.50
<b>LIGHT RED KIDNEY - Colorado</b>													
2000-2001	27.25	27.25	27.00	26.33	26.06	26.00	26.00	26.00	25.85	26.25	26.25	26.25	26.37
2001-2002	26.75	30.20	33.25	34.67	35.69	36.00	36.38	36.20	36.13	36.25	36.25	36.00	34.48
2002-2003	32.00	33.30	32.50	32.50	32.33	32.13	32.38	31.70	31.50	31.25	31.00	31.00	31.97
2003-2004	30.50	29.50	29.25	29.50	29.50	29.50	29.50	29.50	29.56	30.25	30.50	31.10	29.85
2004-2005	36.25	37.50	37.50	38.50	38.50	38.50	37.80						37.79

NE=Not Established  
 NA=Not Available  
 W=Withdrawn

# Grower Monthly Average Price

Per Cwt By Crop Year Fob

	SEP	OCT	NOV	DEC	JAN	FEB	MAR	APR	MAY	JUN	JUL	AUG	AVG
<b>BLACK - Michigan</b>													
2000-2001	10.75	10.60	10.75	10.50	10.50	10.50	10.50	10.50	11.20	16.25	17.20	17.50	12.23
2001-2002	25.75	28.65	31.50	33.00	33.38	35.00	35.00	35.00	35.00	35.00	33.38	NE	32.79
2002-2003	14.00	12.00	11.50	11.50	11.50	11.50	11.50	12.20	12.50	13.63	16.90	17.50	13.02
2003-2004	17.50	17.63	18.25	18.25	18.25	18.13	19.55	21.00	21.38	20.10	20.00	20.00	19.17
2004-2005	21.00	19.13	18.50	18.50	18.88	20.63	20.60						19.61
<b>BLACK - New York</b>													
2000-2001	12.00	11.00	11.00	11.00	11.00	11.00	11.00	11.00	11.00	16.13	16.00	16.00	12.34
2001-2002	25.50	25.50	29.00	27.50	27.25	27.00	27.00	29.00	29.00	28.75	28.00	NE	27.59
2002-2003	NE	13.83	13.50	13.50	13.50	13.50	13.50	13.80	14.00	14.25	16.90	17.50	14.34
2003-2004	17.25	17.25	17.50	17.50	17.50	17.50	18.40	19.25	20.00	19.80	19.50	19.50	18.41
2004-2005	NE	19.50	19.50	19.50	19.13	19.50	19.50						19.44
<b>CRANBERRY - Michigan</b>													
2000-2001	22.25	21.70	21.50	21.50	21.00	20.00	18.50	18.88	19.00	19.00	19.30	20.33	20.25
2001-2002	26.50	27.50	28.00	28.00	28.00	28.00	28.00	NE	NE	NE	NE	NE	27.71
2002-2003	20.50	17.70	17.50	17.50	17.00	17.00	17.00	17.00	NE	NE	NE	NE	17.65
2003-2004	23.00	23.00	21.00	20.50	20.63	21.00	21.30	21.75	22.00	22.00	NE	NE	21.62
2004-2005	25.75	24.50	24.50	24.50	24.88	25.00	25.00						24.88
<b>LIGHT RED KIDNEY - Michigan</b>													
2000-2001	19.88	20.40	20.25	19.50	19.50	19.13	19.50	19.38	19.50	19.25	19.00	19.38	19.56
2001-2002	20.50	23.30	25.25	25.67	25.00	28.00	28.00	28.00	27.75	27.00	27.00	27.00	26.04
2002-2003	22.00	22.00	21.50	21.50	21.50	22.00	21.50	21.70	22.00	NE	NE	NE	21.74
2003-2004	22.63	23.31	22.75	22.75	22.75	22.50	22.50	23.00	23.25	24.20	24.38	24.00	23.17
2004-2005	28.25	27.50	27.50	27.50	27.50	27.50	27.50						27.61
<b>LIGHT RED KIDNEY - New York</b>													
2000-2001	19.00	19.00	19.00	19.00	18.63	18.50	18.88	18.50	18.70	18.75	18.50	18.50	18.75
2001-2002	19.75	22.30	23.75	24.83	24.75	25.00	25.75	26.80	27.00	27.00	26.00	26.00	24.91
2002-2003	21.50	22.30	21.88	21.50	21.50	22.13	22.50	22.50	22.75	23.00	23.00	23.00	22.30
2003-2004	22.50	22.25	22.50	22.50	22.50	22.50	22.60	23.00	23.00	22.80	22.50	22.63	22.61
2004-2005	NE	28.63	28.20	28.25	28.00	28.00	27.70						28.13
<b>LIGHT RED KIDNEY - Colorado</b>													
2000-2001	18.63	19.50	19.50	19.50	19.13	19.00	19.00	19.00	18.70	18.50	18.50	18.38	18.95
2001-2002	19.50	21.00	22.00	22.50	26.13	24.00	27.00	28.00	28.00	28.00	28.00	28.00	25.18
2002-2003	23.00	22.50	21.50	21.50	21.50	21.50	21.50	21.50	21.50	21.50	22.40	23.75	21.97
2003-2004	21.90	21.38	21.00	21.00	21.00	21.00	21.00	21.00	21.25	21.50	21.50	22.10	21.30
2004-2005	25.75	28.00	28.00	28.00	28.00	28.00	28.00						27.68

NE=Not Established  
NA=Not Available  
W=Withdrawn

# Dealer Monthly Average Price

Per Cwt By Crop Year Fob

	SEP	OCT	NOV	DEC	JAN	FEB	MAR	APR	MAY	JUN	JUL	AUG	AVG
<b>SMALL WHITE - Idaho/Washington</b>													
2000-2001	25.00	25.10	24.88	25.00	24.25	24.00	24.00	24.00	24.00	25.75	25.80	26.00	24.82
2001-2002	26.83	27.90	30.50	30.50	32.00	33.50	33.50	NE	NE	NE	NE	NE	30.68
2002-2003	NE	26.00	26.19	26.08	26.00	26.00	25.88	25.50	25.50	NE	NE	NE	25.89
2003-2004	26.56	26.56	26.75	26.75	26.81	27.00	27.00	27.00	27.00	27.00	NE	NE	26.84
2004-2005	NE	34.13	34.00	NE	NE	33.00	33.30						33.61
<b>PEA BEAN - Michigan No 1's</b>													
2000-2001	16.56	16.18	16.25	16.00	15.81	15.88	16.00	16.00	16.00	17.00	17.50	18.00	16.43
2001-2002	24.25	26.70	29.00	28.83	28.69	28.63	27.81	25.15	24.50	22.75	21.60	19.88	25.65
2002-2003	18.69	17.60	16.75	16.67	16.75	16.19	16.56	18.00	18.50	19.31	20.50	20.50	18.00
2003-2004	21.80	21.88	23.50	22.50	22.50	22.50	23.00	25.00	25.13	24.60	24.50	25.40	23.53
2004-2005	30.50	31.75	32.50	31.50	31.50	31.00	30.50						31.32
<b>PEA BEAN - North Dakota/Minnesota</b>													
2000-2001	15.63	15.30	15.25	15.00	15.00	14.63	14.41	14.38	14.50	16.25	16.15	18.00	15.38
2001-2002	23.13	24.90	28.00	27.17	27.63	27.00	26.50	23.00	21.63	20.38	19.70	18.00	23.92
2002-2003	17.13	15.70	15.38	15.50	15.50	15.19	15.38	16.50	17.00	17.75	19.40	19.63	16.67
2003-2004	19.80	19.75	20.63	20.50	20.50	20.50	21.05	22.56	22.50	22.50	22.50	22.50	21.27
2004-2005	29.75	30.50	30.70	30.50	29.63	29.50	29.00						29.94
<b>DARK RED KIDNEY - Michigan</b>													
2000-2001	27.00	26.90	26.50	25.33	25.44	25.50	25.25	24.75	24.50	24.81	25.50	26.38	25.66
2001-2002	27.17	35.50	43.25	41.00	41.25	41.50	41.38	40.90	37.50	37.00	37.00	28.17	37.64
2002-2003	27.81	25.90	24.88	24.50	24.50	24.50	25.19	26.10	27.38	29.75	30.70	30.13	26.78
2003-2004	28.25	27.50	27.50	28.50	28.50	28.79	29.00	30.50	30.63	31.00	31.13	31.50	29.40
2004-2005	36.50	36.25	35.50	35.50	35.50	36.00	35.10						35.76
<b>DARK RED KIDNEY - Minnesota/Wisconsin</b>													
2000-2001	26.56	25.65	25.56	24.75	24.88	24.63	24.75	24.50	24.70	25.13	25.25	26.00	25.20
2001-2002	26.67	35.25	41.50	42.00	41.38	41.50	41.00	39.60	37.13	36.75	35.00	NE	37.98
2002-2003	25.19	23.00	22.50	22.67	22.50	22.75	23.94	25.60	27.50	29.50	30.00	30.25	25.45
2003-2004	27.30	26.50	26.50	27.50	27.75	28.50	29.05	30.50	30.75	31.40	31.50	31.50	29.06
2004-2005	37.00	36.44	35.60	35.25	34.81	34.56	34.25						35.42
<b>GARBANZO - Idaho/Washington</b>													
2000-2001	32.50	31.30	29.94	29.67	29.44	28.75	28.75	28.38	26.75	25.09	25.50	22.75	28.24
2001-2002	22.58	23.00	23.31	22.33	21.81	22.13	21.33	21.50	21.38	21.00	21.13	NE	21.95
2002-2003	22.75	24.35	25.13	24.50	NE	24.33	25.00	24.50	24.63	25.33	25.50	26.50	24.77
2003-2004	27.80	26.88	27.50	27.50	29.00	29.38	30.00	31.33	30.81	31.50	32.25	32.00	29.66
2004-2005	35.38	39.38	39.40	38.75	39.50	39.17	NE						38.60

NE=Not Established  
 NA=Not Available  
 W=Withdrawn

# Grower Monthly Average Price

Per Cwt By Crop Year Fob

	SEP	OCT	NOV	DEC	JAN	FEB	MAR	APR	MAY	JUN	JUL	AUG	AVG
<b>SMALL WHITE - Idaho/Washington</b>													
2000-2001	17.50	17.10	16.50	16.50	16.25	16.25	16.63	17.00	17.00	17.00	17.60	18.83	17.01
2001-2002	19.33	19.60	20.13	20.50	22.38	24.00	24.00	NE	NE	NE	NE	NE	21.42
2002-2003	20.00	20.00	20.00	19.83	20.00	19.88	20.00	20.00	20.00	19.88	19.70	20.00	19.94
2003-2004	19.13	19.50	20.00	20.00	20.00	20.00	20.00	20.00	19.75	19.83	NE	NE	19.82
2004-2005	NE	23.67	24.00	NE	NE	24.00	24.00						23.92
<b>PEA BEAN - Michigan No 1's</b>													
2000-2001	10.69	10.90	10.94	10.75	10.50	10.50	10.50	10.50	10.65	12.00	12.50	13.50	11.16
2001-2002	18.25	19.50	21.75	23.17	23.63	23.75	23.00	20.55	20.00	20.00	18.20	17.00	20.73
2002-2003	13.75	12.50	11.00	11.00	11.00	10.44	10.25	11.60	12.00	12.75	15.00	15.50	12.23
2003-2004	16.00	16.50	17.75	17.67	17.50	17.50	18.60	19.75	20.00	20.20	20.50	20.33	18.53
2004-2005	25.13	26.38	26.30	26.00	26.00	26.00	26.00						25.97
<b>PEA BEAN - North Dakota/Minnesota</b>													
2000-2001	10.63	11.25	11.31	11.08	10.50	10.50	10.50	10.50	10.80	12.00	12.00	13.50	11.21
2001-2002	17.25	18.33	21.00	21.50	21.94	22.25	21.81	17.90	17.00	17.00	15.90	15.50	18.95
2002-2003	12.75	10.60	10.00	10.00	10.00	9.13	9.25	10.60	11.50	12.00	13.60	14.00	11.12
2003-2004	14.80	15.38	15.50	15.50	15.50	15.50	16.60	17.88	18.50	18.50	18.50	18.50	16.72
2004-2005	24.50	25.50	25.50	25.50	24.75	24.50	24.80						25.01
<b>DARK RED KIDNEY - Michigan</b>													
2000-2001	19.75	20.40	20.13	20.00	19.63	19.25	19.50	19.50	19.20	19.00	19.00	19.38	19.56
2001-2002	20.17	24.67	29.75	28.00	28.00	28.00	28.00	28.00	28.00	28.00	28.00	NA	27.14
2002-2003	20.00	18.80	17.00	17.00	17.00	18.75	20.00	20.00	22.50	22.75	23.00	23.00	19.98
2003-2004	22.50	22.13	21.75	22.00	22.13	22.50	22.70	23.00	23.25	24.00	24.00	24.00	22.83
2004-2005	28.75	28.38	27.50	27.50	27.50	26.50	26.20						27.48
<b>DARK RED KIDNEY - Minnesota/Wisconsin</b>													
2000-2001	20.63	19.60	19.13	18.83	18.50	18.50	18.63	19.00	18.50	18.50	18.80	19.50	19.01
2001-2002	19.83	24.67	29.50	29.50	29.25	29.50	29.50	29.10	29.00	29.00	29.00	NE	27.99
2002-2003	20.33	18.50	17.00	17.00	17.00	17.00	17.63	18.00	21.50	22.50	23.00	23.00	19.37
2003-2004	22.20	21.38	21.00	21.50	21.75	22.50	22.90	24.00	24.50	24.50	24.50	24.50	22.94
2004-2005	29.25	29.13	28.90	28.50	28.50	27.75	26.00						28.29
<b>GARBANZO - Idaho/Washington</b>													
2000-2001	22.13	21.50	21.75	22.33	22.50	22.50	22.50	22.25	19.67	17.00	17.00	17.50	20.72
2001-2002	17.50	17.50	17.19	16.17	15.50	15.25	15.00	15.30	15.50	15.50	16.00	NE	16.04
2002-2003	17.00	17.80	18.75	18.25	NE	NE	18.00	18.00	18.50	19.33	19.67	20.50	18.58
2003-2004	21.40	21.50	20.75	21.25	21.00	22.88	23.60	24.06	24.13	24.75	24.75	24.63	22.89
2004-2005	26.75	29.75	29.90	29.50	29.38	29.50	NE						29.13

NE=Not Established  
 NA=Not Available  
 W=Withdrawn

## Dealer Monthly Average Price Per Cwt By Crop Year Fob

	SEP	OCT	NOV	DEC	JAN	FEB	MAR	APR	MAY	JUN	JUL	AUG	AVG
<b>AUSTRIAN WINTER PEA - Idaho/Washington</b>													
2000-2001	11.21	11.28	11.63	12.88	13.38	11.50	NE	NE	NE	15.00	NE	16.75	12.95
2001-2002	16.75	NE	NE	NE	NE	NE	NE	NE	NE	NE	NE	14.00	15.38
2002-2003	14.56	14.83	17.75	17.25	NE	18.75	19.38	NE	18.00	18.00	18.00	18.00	17.45
2003-2004	18.05	18.06	17.97	18.00	NE	NE	NE	18.50	18.44	NE	18.06	14.50	NE
2004-2005	14.92	14.75	14.88	15.25	15.13	14.56	14.00						NE
<b>LENTIL - Idaho/Washington</b>													
2000-2001	14.88	14.50	14.31	14.25	14.44	14.03	13.69	13.44	13.33	13.31	13.45	13.38	13.92
2001-2002	13.83	13.75	13.75	13.67	13.06	12.88	12.91	13.60	13.50	13.47	13.33	13.47	13.44
2002-2003	15.25	17.63	18.63	19.46	21.92	24.00	25.16	25.30	24.88	25.38	21.10	18.56	21.44
2003-2004	20.55	22.50	22.38	22.50	23.38	24.38	25.70	26.75	26.38	20.65	18.75	18.10	22.67
2004-2005	20.94	22.50	21.95	20.63	19.50	18.75	18.35						20.37
<b>GREEN SPLIT PEA - Idaho/Washington</b>													
2000-2001	10.56	10.75	10.88	11.00	11.56	12.06	12.25	12.22	12.08	12.00	12.15	11.81	11.61
2001-2002	11.83	12.68	13.16	13.25	13.41	13.75	13.53	13.63	13.53	13.63	13.55	13.41	13.28
2002-2003	14.03	15.85	16.50	16.75	17.67	17.81	18.38	18.70	18.63	18.63	14.19	14.00	16.76
2003-2004	14.80	15.56	16.25	16.25	16.56	17.38	17.95	18.25	18.63	15.05	13.75	13.20	16.14
2004-2005	13.56	13.69	13.55	13.50	13.38	13.16	12.50						13.33
<b>WHOLE GREEN PEA - Idaho/Washington</b>													
2000-2001	8.50	8.45	8.72	9.13	9.56	9.63	9.75	9.66	9.65	9.66	9.70	9.50	9.33
2001-2002	9.58	9.80	10.13	10.25	10.44	10.59	10.91	11.20	11.25	11.16	10.85	10.75	10.58
2002-2003	11.13	12.83	13.50	13.75	14.58	14.63	15.69	15.50	15.75	15.75	14.70	12.16	14.16
2003-2004	12.25	12.75	13.81	14.00	14.31	14.88	15.25	15.75	15.63	12.50	11.34	10.55	13.59
2004-2005	10.58	10.53	10.45	10.25	10.25	10.19	9.85						10.30
<b>YELLOW SPLIT PEA - Idaho/Washington</b>													
2000-2001	10.56	10.75	10.88	11.00	11.59	12.63	12.69	12.25	12.05	12.00	12.15	11.81	11.70
2001-2002	11.83	12.63	13.50	13.92	14.25	14.28	14.38	14.35	14.38	14.25	14.25	13.54	13.80
2002-2003	13.81	15.15	15.56	14.92	16.83	17.06	17.25	17.25	17.25	17.25	NE	12.75	15.92
2003-2004	13.60	14.00	14.81	15.00	15.50	15.88	16.05	16.25	16.25	14.40	13.00	12.20	14.75
2004-2005	12.38	12.38	12.75	12.25	12.25	12.44	12.10						12.36
<b>WHOLE YELLOW PEA - Idaho/Washington</b>													
2000-2001	8.44	8.35	8.63	9.00	9.59	10.03	9.88	9.59	9.50	9.59	9.70	9.56	9.32
2001-2002	9.50	9.83	10.38	10.50	11.31	11.53	11.56	12.10	12.06	11.75	11.85	11.06	11.12
2002-2003	10.88	12.20	12.56	13.83	13.42	13.50	13.94	14.20	14.19	13.75	NE	10.25	12.97
2003-2004	11.30	11.75	12.00	12.25	12.56	13.19	13.55	13.50	14.00	11.70	10.50	9.92	12.19
2004-2005	9.69	9.75	10.00	9.75	9.69	9.69	9.20						9.68

NE=Not Established  
NA=Not Available  
W=Withdrawn

## Grower Monthly Average Price Per Cwt By Crop Year Fob

	SEP	OCT	NOV	DEC	JAN	FEB	MAR	APR	MAY	JUN	JUL	AUG	AVG
<b>AUSTRIAN WINTER PEA - Idaho/Washington</b>													
2000-2001	7.00	7.00	7.00	7.46	9.75	8.00	8.06	8.25	8.25	8.92	10.00	10.50	8.35
2001-2002	11.00	11.00	11.00	11.00	11.00	11.00	11.00	NA	11.00	11.00	NE	9.00	10.80
2002-2003	9.59	9.20	9.83	10.50	10.50	11.00	11.00	11.00	11.00	10.00	10.00	11.00	10.39
2003-2004	11.00	11.00	11.00	11.00	11.00	NE	NE	11.00	11.00	10.20	9.50	9.50	10.62
2004-2005	10.00	10.00	9.90	9.50	9.75	9.38	8.20						9.53
<b>LENTIL - Idaho/Washington</b>													
2000-2001	11.19	11.03	10.97	10.88	10.84	10.50	10.22	10.25	9.90	9.91	9.78	9.84	10.44
2001-2002	9.83	9.75	9.72	9.71	9.44	9.06	9.03	9.75	9.59	9.44	9.40	9.50	9.52
2002-2003	10.75	12.85	13.81	14.25	15.42	17.63	18.63	18.70	18.63	18.56	15.20	14.50	15.74
2003-2004	14.85	16.50	16.88	16.50	17.13	19.00	20.90	21.25	20.38	15.80	14.19	13.25	17.22
2004-2005	14.38	15.56	15.95	15.38	14.69	14.19	13.45						14.80
<b>WHOLE GREEN PEA - Idaho/Washington</b>													
2000-2001	5.13	5.20	5.38	5.50	5.84	6.28	6.44	6.53	6.43	6.28	6.25	6.19	5.95
2001-2002	6.21	6.35	6.56	6.88	7.04	7.06	7.13	7.40	7.25	7.25	7.25	7.13	6.96
2002-2003	7.38	7.68	7.91	8.33	9.08	9.81	10.88	10.60	10.44	10.13	9.30	7.56	9.09
2003-2004	7.63	8.09	8.84	9.08	9.56	9.94	10.50	10.94	11.25	8.43	7.38	6.45	9.01
2004-2005	6.41	6.66	6.93	6.69	6.63	6.56	6.03						6.56
<b>WHOLE YELLOW PEA - Idaho/Washington</b>													
2000-2001	5.16	5.15	5.31	5.38	5.81	6.31	6.44	6.38	6.40	6.25	6.25	6.19	5.92
2001-2002	6.17	6.25	6.56	6.79	7.04	7.25	7.31	7.68	7.66	7.59	7.38	6.50	7.02
2002-2003	6.72	7.10	7.34	7.58	7.42	7.94	8.03	8.50	8.75	8.67	8.44	6.63	7.76
2003-2004	6.43	6.75	7.53	7.75	7.91	8.72	9.03	9.25	9.42	7.73	7.13	6.08	7.81
2004-2005	5.97	6.25	6.43	6.25	6.00	6.00	5.73						6.09

NE=Not Established  
 NA=Not Available  
 W=Withdrawn

## Dealer Monthly Average Price Per Cwt By Crop Year Fob

	SEP	OCT	NOV	DEC	JAN	FEB	MAR	APR	MAY	JUN	JUL	AUG	AVG
<b>BABY LIMA - California</b>													
2000-2001	28.75	27.55	27.50	27.46	27.44	26.94	26.25	25.25	24.60	24.38	24.35	24.69	26.26
2001-2002	25.96	25.73	31.16	31.17	32.00	32.69	36.38	37.18	37.88	37.94	38.25	38.44	33.73
2002-2003	38.75	33.48	32.17	31.50	31.50	31.50	31.75	31.50	31.38	31.50	31.20	31.13	32.28
2003-2004	31.55	31.38	31.19	31.25	31.13	31.25	31.15	31.19	30.94	32.65	35.00	39.38	32.34
2004-2005	42.00	42.00	41.20	41.00	41.06	41.31	41.50						41.44
<b>LARGE LIMA - California</b>													
2000-2001	35.75	34.65	34.44	34.50	34.38	34.75	34.38	34.38	34.00	34.13	34.48	34.88	34.56
2001-2002	35.67	39.60	42.56	42.67	42.13	42.00	42.38	42.63	42.50	42.72	42.55	42.44	41.65
2002-2003	42.75	42.55	42.38	42.58	42.50	42.50	42.50	42.50	42.31	42.06	41.80	41.50	42.33
2003-2004	42.25	43.06	42.25	42.58	42.31	42.25	42.10	42.25	42.13	42.35	42.31	42.90	42.40
2004-2005	43.19	43.00	43.10	43.38	43.50	43.81	43.80						43.40
<b>BLACKEYE - California</b>													
2000-2001	23.22	25.60	26.88	26.92	26.47	26.38	26.47	26.31	26.00	25.50	25.75	25.84	25.95
2001-2002	26.17	28.05	28.92	29.17	30.06	30.56	30.81	30.70	31.19	31.31	31.30	30.94	29.93
2002-2003	31.31	32.90	33.31	33.33	33.63	35.50	35.81	35.44	35.75	36.25	NE	36.00	34.48
2003-2004	36.00	30.50	30.00	30.00	29.88	29.81	29.90	29.50	28.81	28.40	29.00	29.60	30.12
2004-2005	29.81	30.00	28.45	30.25	30.50	31.17	31.50						30.24
<b>GARBANZO - California</b>													
2000-2001	33.69	32.15	30.69	31.00	30.50	NE	NE	28.25	28.00	NE	26.50	27.33	29.79
2001-2002	27.50	27.50	27.00	27.00	26.00	27.00	25.00	27.00	NE	NE	NE	NE	26.75
2002-2003	25.00	25.00	NE	NE	NE	NE	NE	NE	NE	NE	NE	30.33	26.78
2003-2004	29.75	NE	NE	30.00	NE	NE	NE	NE	NE	NE	31.50	32.00	30.81
2004-2005	NE	NE	NE	NE	NE	NE	NE						NE

NE=Not Established  
 NA=Not Available  
 W=Withdrawn



## Grower Monthly Average Price Per Cwt By Crop Year Fob

	SEP	OCT	NOV	DEC	JAN	FEB	MAR	APR	MAY	JUN	JUL	AUG	AVG
<b>BABY LIMA - California</b>													
2000-2001	26.13	26.50	25.88	25.83	25.50	24.88	24.19	23.50	23.45	22.88	22.60	23.63	24.58
2001-2002	24.00	26.70	29.38	29.33	30.25	31.75	34.88	35.40	36.44	36.75	37.00	37.00	32.41
2002-2003	31.75	31.20	30.25	29.92	30.00	30.06	31.38	29.95	30.00	30.00	30.00	30.00	30.38
2003-2004	30.00	30.00	30.00	30.00	30.00	30.00	30.00	30.00	30.25	31.30	33.50	37.25	31.03
2004-2005	39.50	39.50	39.00	39.00	39.13	39.63	39.60						39.34
<b>LARGE LIMA - California</b>													
2000-2001	33.50	33.30	33.25	33.42	33.50	33.00	33.00	32.88	32.50	32.50	32.70	33.13	33.06
2001-2002	33.33	37.95	40.25	40.00	40.13	40.00	40.00	40.60	41.25	41.00	41.00	41.00	39.71
2002-2003	40.88	41.00	41.00	40.67	40.50	40.75	41.13	41.00	40.94	41.00	41.00	41.00	40.91
2003-2004	41.50	41.69	41.00	41.00	41.00	41.00	41.00	41.00	41.00	41.00	41.00	41.90	41.17
2004-2005	41.50	41.50	41.80	41.75	42.00	42.00	41.90						41.78
<b>BLACKEYE - California</b>													
2000-2001	21.25	23.45	24.25	25.00	24.50	24.50	24.63	24.63	24.50	24.75	24.00	24.06	24.13
2001-2002	24.50	25.70	27.33	27.33	28.13	28.38	28.38	28.50	28.88	29.00	28.50	28.50	27.76
2002-2003	29.75	31.45	31.38	31.33	32.08	33.25	34.67	34.06	34.25	34.50	35.50	NE	32.93
2003-2004	NE	29.00	28.25	28.00	28.00	28.00	28.00	28.00	28.00	27.90	27.63	28.00	28.07
2004-2005	28.00	28.06	28.45	28.50	28.50	28.50	28.50						28.36
<b>GARBANZO - California</b>													
2000-2001	29.75	29.63	26.83	25.50	25.50	29.00	NE	25.00	26.50	NE	24.50	24.00	26.62
2001-2002	25.50	25.20	25.50	NE	22.00	NE	NE	NE	NE	NE	NE	NE	24.55
2002-2003	22.50	22.50	NE	21.00	NE	NE	NE	28.00	NE	NE	NE	25.00	23.80
2003-2004	27.38	NE	28.00	28.00	NE	NE	28.00	NE	NE	NE	29.50	30.25	28.52
2004-2005	33.75	NE	38.00	NE	NE	39.00							36.92

NE=Not Established  
NA=Not Available  
W=Withdrawn

## Dry Edible Beans, U.S. Production by Commercial Class (1,000 Cwt.)

Class	2004	2003	2002	2001	2000	5 Year Average
Pea Bean, (Navy)	2,141	2,514	5,389	2,311	4,771	3,425
Great Northern	950	2,216	1,558	2,108	2,489	1,864
Small White	66	55	68	39	64	58
Pinto	8,034	10,453	13,188	8,721	10,670	10,213
Red Kidney	1,506	1,940	2,343	1,503	2,366	1,932
Pink	525	612	596	326	320	476
Small Red	601	581	592	172	313	452
Cranberry	192	190	359	147	449	267
Black	1,875	1,263	3,120	783	1,336	1,675
Large Lima	331	369	334	326	437	359
Baby Lima	300	325	501	235	542	381
Blackeye	379	785	543	553	382	528
Garbanzo	567	417	861	1,612	1,308	953
Other	651	772	860	747	962	798
<b>Total</b>	<b>18,118</b>	<b>22,492</b>	<b>30,312</b>	<b>19,583</b>	<b>26,409</b>	<b>23,383</b>

Source: USDA, NASS. \*Subject to revision.

## Canadian Crop Production

### Dry White Beans

PROVINCE	Harvested Acres (1,000)					Production (1,000MT)				
	2004	2003	2002	2001	2000	2004	2003	2002	2001	2000
Alberta	0.00	15.07	15.07	15.07	15.07	0.00	17.20	13.60	15.90	15.90
Manitoba	55.10	109.96	170.00	100.08	100.08	20.40	124.70	124.70	65.10	65.10
Ontario	60.05	55.10	85.00	49.91	49.91	51.70	49.90	71.40	29.70	29.70
Quebec	0.00	3.95	6.67	6.18	6.18	0.00	3.20	5.80	5.20	5.20
<b>TOTAL</b>	<b>115.15</b>	<b>184.09</b>	<b>276.75</b>	<b>171.24</b>	<b>171.24</b>	<b>72.10</b>	<b>195.00</b>	<b>215.50</b>	<b>115.90</b>	<b>115.90</b>

### Dry Peas

PROVINCE	Harvested Acres (1,000)					Production (1,000MT)				
	2004	2003	2002	2001	2000	2004	2003	2002	2001	2000
Alberta	655.06	604.90	440.09	609.84	609.84	698.10	507.90	221.60	541.60	541.60
British Columbia	3.95	9.88	4.94	9.88	9.88	3.40	9.50	3.50	9.00	9.00
Manitoba	144.80	134.92	199.66	174.95	174.95	160.00	137.40	176.90	170.70	170.70
Saskatchewan	2519.93	2389.95	1949.87	2650.15	2650.15	2476.70	1469.60	963.50	1475.70	1475.70
<b>TOTAL</b>	<b>3323.74</b>	<b>3139.65</b>	<b>2594.55</b>	<b>3444.82</b>	<b>3444.82</b>	<b>3338.20</b>	<b>2124.40</b>	<b>1365.50</b>	<b>2197.00</b>	<b>2197.00</b>

### Chickpeas

PROVINCE	Harvested Acres (1,000)					Production (1,000MT)				
	2004	2003	2002	2001	2000	2004	2003	2002	2001	2000
Alberta	15.07	24.96	29.90	75.12	75.12	8.60	13.20	15.90	18.10	18.10
Saskatchewan	80.06	129.97	349.89	1100.09	1100.09	42.60	54.40	140.60	446.80	446.80
<b>TOTAL</b>	<b>95.13</b>	<b>154.93</b>	<b>379.79</b>	<b>1175.21</b>	<b>1175.21</b>	<b>51.20</b>	<b>67.60</b>	<b>156.50</b>	<b>464.90</b>	<b>464.90</b>

### Colored Beans

PROVINCE	Harvested Acres (1,000)					Production (1,000MT)				
	2004	2003	2002	2001	2000	2004	2003	2002	2001	2000
Alberta	46.95	37.07	24.96	39.04	39.04	43.10	43.10	18.10	38.60	38.60
Manitoba	55.10	109.96	140.11	89.94	89.94	18.10	106.60	106.60	63.50	63.50
Ontario	64.99	49.91	75.17	49.91	49.91	60.30	47.60	54.40	22.70	22.70
Quebec	19.77	19.77	14.83	14.83	14.83	20.00	20.00	12.80	10.80	10.80
<b>TOTAL</b>	<b>186.81</b>	<b>216.71</b>	<b>255.06</b>	<b>193.73</b>	<b>193.73</b>	<b>141.50</b>	<b>217.30</b>	<b>191.90</b>	<b>135.60</b>	<b>135.60</b>

### Lentils

PROVINCE	Harvested Acres (1,000)					Production (1,000MT)				
	2004	2003	2002	2001	2000	2004	2003	2002	2001	2000
Alberta	17.79	14.83	5.93	18.04	18.04	11.30	6.90	1.90	5.90	5.90
British Columbia	4.94	3.95	0.00	3.95	3.95	0.80	2.70	0.00	2.30	2.30
Manitoba	1830.02	1304.94	950.10	1685.22	1685.22	948.90	510.30	351.90	576.60	576.60
Saskatchewan	1852.76	1323.71	956.03	1707.21	1707.21	961.00	519.90	353.80	584.80	584.80
<b>TOTAL</b>	<b>3675.53</b>	<b>2747.42</b>	<b>1906.03</b>	<b>3594.42</b>	<b>3594.42</b>	<b>1922.00</b>	<b>1089.80</b>	<b>706.60</b>	<b>1240.30</b>	<b>1240.30</b>

# Dry Edible Beans, Production by Commercial Class (1,000 cwt)

## SMALL RED

State	2004	2003	2002	2001	2000
ID	192	200	226	83	147
MI	261	280	208	27	113
MIN	13	15	28	0	0
ND	54	0	0	0	0
WA	81	86	130	62	53
<b>Total</b>	<b>601</b>	<b>581</b>	<b>592</b>	<b>172</b>	<b>313</b>

## SMALL WHITE

State	2004	2003	2002	2001	2000
ID	50	39	38	20	29
OR	0	10	12	11	16
WA	16	6	18	8	19
<b>Total</b>	<b>66</b>	<b>55</b>	<b>68</b>	<b>39</b>	<b>64</b>

## GREAT NORTHERN

State	2004	2003	2002	2001	2000
ID	58	79	65	88	146
MI	16	134	60	20	0
MIN	0	25	12	13	35
NE	827	1743	1286	1786	2040
ND	29	137	74	128	83
WA	0	20	33	27	24
WY	20	78	28	46	161
<b>Total</b>	<b>950</b>	<b>2216</b>	<b>1558</b>	<b>2108</b>	<b>2489</b>

## BABY LIMAS

State	2004	2003	2002	2001	2000
CA	300	325	501	235	542
<b>Total</b>	<b>300</b>	<b>325</b>	<b>501</b>	<b>235</b>	<b>542</b>

## LARGE LIMA

State	2004	2003	2002	2001	2000
CA	331	369	334	326	437
<b>Total</b>	<b>331</b>	<b>369</b>	<b>334</b>	<b>326</b>	<b>437</b>

## PINK

State	2004	2003	2002	2001	2000
CA	8	9	0	0	6
ID	258	244	220	109	70
MN	71	128	142	59	85
ND	78	130	124	59	55
WA	110	101	110	99	104
<b>Total</b>	<b>525</b>	<b>612</b>	<b>596</b>	<b>326</b>	<b>320</b>

## CRANBERRY

State	2004	2003	2002	2001	2000
CA	35	25	23	30	37
ID	27	23	46	40	25
MI	130	142	290	70	380
MN	0	0	0	7	7
<b>Total</b>	<b>192</b>	<b>190</b>	<b>359</b>	<b>147</b>	<b>449</b>

## GARBANZO

State	2004	2003	2002	2001	2000
CA	120	85	288	342	343
ID	179	97	212	412	410
MT	28	22	73	171	150
ND	30	74	91	231	145
NE	8	14	0	48	0
OR	37	24	27	63	77
SD	51	17	25	141	65
WA	114	84	145	204	118
<b>Total</b>	<b>567</b>	<b>417</b>	<b>861</b>	<b>1612</b>	<b>1308</b>

## BLACK

State	2004	2003	2002	2001	2000
CA	15	7	0	0	5
ID	57	24	76	13	24
MI	1290	680	2030	335	840
MN	57	78	139	16	57
NE	46	20	38	22	18
ND	250	277	689	288	282
NY	93	142	91	59	78
WA	67	34	57	50	32
<b>Total</b>	<b>1875</b>	<b>1262</b>	<b>3120</b>	<b>783</b>	<b>1336</b>

## BLACKEYE

State	2004	2003	2002	2001	2000
CA	235	395	313	290	330
TX	144	390	230	263	52
<b>Total</b>	<b>379</b>	<b>785</b>	<b>543</b>	<b>553</b>	<b>382</b>

## PEA BEAN (NAVY)

State	2004	2003	2002	2001	2000
ID	98	71	119	63	160
MI	970	592	1620	170	1800
MN	330	612	1128	713	990
NE	41	23	68	0	77
ND	650	1164	2340	1327	1620
OR	10	8	0	0	7
SD	33	24	96	25	77
WY	9	20	18	13	40
<b>Total</b>	<b>2141</b>	<b>2514</b>	<b>5389</b>	<b>2311</b>	<b>4771</b>

# Dry Edible Beans, Production by Commercial Class (1000 cwt)

## ALL RED KIDNEY\*

State	2004	2003	2002	2001	2000
CA	86	84	117	130	245
CO	90	86	162	135	193
ID	75	31	51	44	48
MI	292	359	390	115	467
MN	473	620	846	550	688
NE	174	292	315	209	271
ND	15	20	27	68	50
NY	193	323	259	122	232
WA	0	0	26	20	26
WI	108	124	150	110	146
<b>Total</b>	<b>1,506</b>	<b>1,939</b>	<b>2,343</b>	<b>1,503</b>	<b>2,366</b>

## LIGHT RED KIDNEY

State	2004	2003	2002	2001	2000
CA	64	68	76	90	163
CO	90	86	162	135	193
ID	42	17	25	10	27
MI	212	239	260	85	285
MN	117	140	152	115	178
NE	174	292	315	209	271
NY	128	253	191	112	209
WA	0	0	26	20	26
<b>Total</b>	<b>827</b>	<b>1,095</b>	<b>1,207</b>	<b>776</b>	<b>1,352</b>

## DARK RED KIDNEY

State	2004	2003	2002	2001	2000
CA	22	16	41	40	82
ID	33	14	26	34	21
MI	80	120	130	30	182
MN	356	480	694	435	510
ND	15	20	27	68	50
NY	65	70	68	10	23
WI	108	124	150	110	146
<b>Total</b>	<b>679</b>	<b>844</b>	<b>1,136</b>	<b>727</b>	<b>1,014</b>

## PINTO

State	2004	2003	2002	2001	2000
CO	1,126	1,031	1,282	1,530	1,675
ID	593	649	833	521	641
KS	153	231	256	234	279
MI	111	150	183	23	290
MN	160	329	322	156	494
MT	244	209	290	200	331
NE	1,196	1,019	1,709	1,050	749
NM	156	186	153	300	0
ND	3,573	5,864	7,184	4,050	5,294
OR	33	30	30	46	58
SD	55	38	73	45	57
TX	0	8	29	15	8
UT	14	16	5	17	10
WA	153	161	295	94	242
WY	467	526	544	440	542
<b>Total</b>	<b>8,034</b>	<b>10,447</b>	<b>13,188</b>	<b>8,721</b>	<b>10,670</b>

## OTHER

State	2004	2003	2002	2001	2000
CA	170	75	186	143	114
CO	57	51	75	120	112
ID	51	38	21	31	16
KS	0	0	24	25	10
MI	75	138	122	20	235
MN	46	63	49	61	44
MT	0	2	4	5	5
NE	84	40	49	70	75
NY	11	31	24	13	48
ND	21	84	56	49	84
OR	16	27	77	52	53
SD	25	54	67	59	27
TX	7	115	56	70	98
WA	68	33	16	14	22
WY	20	21	34	15	19
<b>Total</b>	<b>651</b>	<b>772</b>	<b>860</b>	<b>747</b>	<b>962</b>

## TOTAL

State	2004	2003	2002	2001	2000
CA	1,300	1,380	1,762	1,496	2,059
CO	1,273	1,168	1,519	1,785	1,980
ID	1,638	1,497	1,907	1,424	1,716
KS	153	231	280	259	289
MI	3,145	2,475	4,903	780	4,125
MN	1,150	1,870	2,666	1,575	2,400
MT	272	233	367	376	486
NE	2,376	3,151	3,465	3,185	3,230
NM	156	186	153	300	0
NY	247	446	333	194	358
ND	4,750	7,800	10,626	6,200	7,613
OR	96	99	146	172	211
SD	164	133	261	270	226
TX	151	513	315	348	158
UT	14	16	5	17	10
WA	609	525	830	578	640
WI	108	124	150	110	146
WY	516	645	624	514	762
<b>Total</b>	<b>18,118</b>	<b>22,492</b>	<b>30,312</b>	<b>19,583</b>	<b>26,409</b>

# USDA Dry Bean, Pea, and Lentil Production Data 2000-2004

## LENTIL

STATE	Area Planted (1,000 Acres)				Area Harvested (1,000 Acres)				Yield (Pounds)				Production (1,000 Cwt.)				
	2004	2003	2002	2001	2004	2003	2002	2001	2004	2003	2002	2001	2004	2003	2002	2001	
Idaho	72	68	68	54	70	66	66	53	64	1,100	950	1,200	1,500	770	627	792	795
Montana	78	30	25	22	65	26	21	21	21	1,400	1,050	710	1,200	910	273	149	252
North Dakota	100	55	53	45	94	54	47	44	44	1,370	1,170	1,100	1,370	1,288	632	517	603
Washington	93	93	75	80	93	91	75	64	85	1,200	1,000	1,700	2,000	1,116	910	1,275	1,280
United States	343	246	221	201	322	237	209	182	214	1,268	1,030	1,308	1,610	4,084	2,442	2,733	2,930

## DRY EDIBLE PEA

STATE	Area Planted (1,000 Acres)				Area Harvested (1,000 Acres)				Yield (Pounds)				Production (1,000 Cwt.)				
	2004	2003	2002	2001	2004	2003	2002	2001	2004	2003	2002	2001	2004	2003	2002	2001	
Idaho	57	55	41	24	55	54	40	23	24	1,400	1,200	1,600	2,000	770	648	640	460
Montana	68	33	32	25	59	31	27	18	24	1,551	1,452	759	1,423	915	450	205	249
North Dakota	310	160	155	90	296	155	138	86	62	2,340	1,770	1,450	2,020	6926	2744	2001	1737
Oregon	7	7	5	5	7	7	5	5	4	3,000	2,000	1,404	1,604	204	130	66	77
Washington	85	83	70	62	84	82	70	62	65	2,400	1,500	1,900	2,000	2016	1230	1330	1240
United States	527	338	303	206	501	329	280	193	179	2,163	1,584	1,517	1,947	10831	5202	4242	3763

## AUSTRIAN WINTER PEA

STATE	Area Planted (1,000 Acres)				Area Harvested (1,000 Acres)				Yield (Pounds)				Production (1,000 Cwt.)				
	2004	2003	2002	2001	2004	2003	2002	2001	2004	2003	2002	2001	2004	2003	2002	2001	
Idaho	15.5	10.0	11.0	4.5	12.0	8.0	7.5	4.0	3.7	1,400	1,400	1,800	1,700	168	112	135	68
Montana	12.0	9.5	9.5	9.9	8.0	7.0	3.5	2.5	0.0	1,000	800	571	800	80	56	20	20
Oregon	3.0	1.6	1.0	1.5	1.5	0.6	0.6	0.6	0.4	1,600	1,000	1,500	1,500	24	6	9	9
United States	30.5	21.1	21.5	15.9	21.5	15.6	11.6	7.1	4.1	1,265	1,115	1,414	1,366	272.0	174.0	164.0	97.0

## WRINKLED SEED PEA

STATE	Production (1,000 cwt)	
	2003	2002
Idaho	163	157
Washington	510	442
United States	673	599

## Dry Pea and Lentil Production Data 1995-2004\*

REGULAR GREEN			YELLOW PEA			SMALL SIEVE GREEN		
Year	Acreage Avg lbs.	Production lbs.	Year	Acreage Avg lbs.	Production lbs.	Year	Acreage Avg lbs.	Production lbs.
2004	326,874	2,087	2004	175,965	2,195	2004	4,754	2,365
2003	232,007	1,590	2003	72,580	1,790	2003	3,566	1,480
2002	179,014	1,608	2002	114,325	1,452	2002	3,409	2,178
2001	145,159	1,699	2001	64,033	2,143	2001	4,680	1,704
2000	139,195	1,948	2000	50,417	2,182	2000	742	3,389
1999	206,645	1,945	1999	60,313	1,849	1999	2,109	2,324
1998	197,365	2,142	1998	98,258	2,016	1998	6,354	1,827
1997	156,861	2,303	1997	37,481	2,038	1997	10,865	1,725
1996	141,097	1,141	1996	25,957	1,034	1996	10,302	1,077
1995	159,249	2,255	1995	23,192	2,162	1995	7,839	2,465
<b>10 Yr Avg</b>	<b>188,347</b>	<b>1,872</b>	<b>10 Yr Avg</b>	<b>72,252</b>	<b>1,886</b>	<b>10 Yr Avg</b>	<b>5,462</b>	<b>2,053</b>

<b>10 Yr Avg</b>	<b>188,347</b>	<b>1,872</b>	<b>356,257,869</b>
------------------	----------------	--------------	--------------------

LARGE CHICKPEA			AUSTRIAN WINTER PEA			MEDIUM LENTILS		
Year	Acreage Avg lbs.	Production lbs.	Year	Acreage Avg lbs.	Production lbs.	Year	Acreage Avg lbs.	Production lbs.
2004	32,518	1,241	2004	17,486	1,565	2004	259,598	1,191
2003	28,546	953	2003	18,650	1,280	2003	76,671	861
2002	67,664	866	2002	14,964	1,164	2002	54,280	991
2001	82,142	1,359	2001	7,178	1,865	2001	69,857	1,295
2000	82,819	1,146	2000	5,872	1,693	2000	60,083	1,554
1999	35,200	917				1999	58,000	1,226
1998	22,056	1,106				1998	58,096	1,239
1997	12,168	1,635				1997	88,026	1,323
1996	17,760	666				1996	88,232	894
1995	13,137	1,369				1995	129,395	1,250
<b>10 Yr Avg</b>	<b>39,401</b>	<b>1,126</b>	<b>43,903,335</b>	<b>5 Yr Avg</b>	<b>12,830</b>	<b>1,513</b>	<b>18,395,137</b>	

SMALL CHICKPEAS			SMALL LENTILS			LARGE LENTILS		
Year	Acreage Avg lbs.	Production lbs.	Year	Acreage Avg lbs.	Production lbs.	Year	Acreage Avg lbs.	Production lbs.
2004	3,429	542	2004	72,702	1,037	2004	94,224	1,182
			2003	158,983	1,115	2003		
			2002	146,263	1,155	2002		
			2001	152,630	1,159	2001		
			2000	155,176	1,308	2000		
			<b>5 Yr Avg</b>	<b>137,151</b>	<b>1,155</b>	<b>160,316,217</b>		

<b>10 Yr Avg</b>	<b>39,401</b>	<b>1,126</b>	<b>43,903,335</b>
------------------	---------------	--------------	-------------------

\*Figures include US dry pea and lentil figures as reported by member processors, the Farm Service Agency, and the National Agriculture Statistics Service  
Source: USA Dry Pea and Lentil Council

# BEANS, DRY: U.S. EXPORTS BY COUNTRY OF DESTINATION

## October 2003-September 2004

(Data in Metric Tons)

COUNTRY	PEA	GREAT NORTHERN	LARGE LIMA	BABY LIMA	WHITE N.E.C.	LT. RED KIDNEY	DK. RED KIDNEY	PINTO	BLACK	BEANS N.E.C.	SEED BEANS	SMALL REDS	TOTAL
<b>NORTH AMERICA</b>													
Bahamas, The								5	78		14		33
Belize													78
Bermuda						10	5				17		32
Canada	4420		274		353	1189				5874	7874		20073
Costa Rica					3				21	3	29		56
Cuba	134							6026	10		21		6180
Dominican Republic		113			45			17092					17679
El Salvador			38			20		140		350	21		515
French W. Indies						503				60	20		582
Guatemala		22					831	600	2092	199	136		4036
Haiti		26						21285	386	39	7		21743
Honduras										970			1923
Jamaica & Dep.			247	35		136	1256				192		106
Leeward-Windward	13					57				13	23		106
Mexico	3330				41	20	4	7694	18134	5357	2821		37540
Netherlands-Antilles						20	27			436			391
Nicaragua						170		425	8	16	66		1038
Panama	8		17	43				38					366
<b>SOUTH AMERICA</b>													
Argentina										683	60		743
Brazil										17	39		56
Chile											90		90
Colombia										1	24		25
Ecuador											5		5
French Guiana						19					68		19
Peru									3				68
Surinam				6							20		9
Trinidad-Tobago		69				165	4	1		54	20		239
Venezuela	5	50			69	417			35	39	114		752
<b>EUROPE</b>													
Albania													50
Austria							41						41
Belgium & Lux.		1087				136	977	21			176		2396
Bugania											17		17
Croatia							21						36
Cyprus											1		1
Denmark							100			123	208		434
Finland							9				5		14
France	176	2857	19	131			1234		25	20	1147		5433
Germany		82					692	58		728	798		2532
Greece		1648					99		40	1	73		1904
Ireland	96									13			159
Italy	251	483	59	88			393		78	1502	575		3612
Malta													67
Moldova, Rep. Of								2160					2160
Netherlands	38	678	20	18			489	147	3	140	59		1613
Norway							84		4	280	74		455
Portugal				35		139	81		332	43	26		729
Romania									20				20
Russian Federation											8		8
Slovenia										391			391
Spain	39	727		36		4	245		105	2478	2231		6137
Sweden		84					65		62	274	208		698
United Kingdom	21135		1421	209			362	41	3	147	368		24010

**BEANS, DRY: U.S. EXPORTS BY COUNTRY OF DESTINATION**  
**October 2003-September 2004**

(Data in Metric Tons)

COUNTRY	PEA	GREAT NORTHERN	LARGE LIMA	BABY LIMA	WHITE N.E.C.	LT. RED KIDNEY	DK. RED KIDNEY	PINTO	BLACK	BEANS N.E.C.	SEED BEANS	SMALL REDS	TOTAL
<b>ASIA</b>													
China(Mainland)						12	26				46		57
Hong Kong						8			447		31		542
India								170			32		119
Indonesia									40		4		963
Israel	39	1472	1871	7873	173			34	59	375	73		120
Japan											1025		14229
Jordan											159		159
Korea	3630	288		13		20	63	32		86	644		4711
Kuwait							20			10	9		103
Lebanon											32		32
Malaysia		1353			107		21		507	44	159		2189
Oman											5		5
Pakistan								208			90		298
Philippines		937				5				184			1145
Saudi Arabia						19	19		40	47	424		549
Singapore				3		32			60				96
Sri Lanka											19		19
Syria								1191	20	502	147		111
Taiwan					32						9		19
Tajikistan, Rep.											36		36
Thailand											18		42
Turkey									2	4	7		7
United Arab Emirates			18										
Yemen													
<b>OCEANIA</b>													
Australia	1631	198	221	153	9	74	66	443	151	59	827		4491
French Pacific Is.					23		102	10		98	32		124
New Zealand			17										300
<b>AFRICA</b>													
Algeria										949	2		951
Angola								1755					4554
Congo								110					110
Congo DR (Zaire)	14790							1331					1331
Djibouti									20		4980		19770
Egypt											107		127
Ethiopia	139												139
Ghana													169
Ivory Coast	1194												1194
Kenya	1015							897			242		2333
Mauritius											13		13
Morocco											80		80
Mozambique													1912
Rwanda										217			653
Sierra Leone													517
Somalia													885
So. Africa, Rep of				36							190		995
Sudan													646
Swaziland													236
Tanzania													15
Uganda								10120					10120
Western Africa								212					212
Zambia								1473					1473
Zimbabwe								15029					15029
<b>Others</b>	70							69				160	299
<b>Oct-03 Sep-04</b>	52151	12267	4238	8680	1487	2322	8523	92279	22784	23804	27204	9718	265457

Sources: Foreign Agricultural Service, Compiled by USDA Market News

Note: Bean, N.E.C. includes Beans Other Kidney, Broad Beans, Chickpeas, Cranberry, and Mung Beans



# PEAS, DRY: U.S. EXPORTS BY COUNTRY OF DESTINATION

## October 2003-September 2004

(Data in Metric Tons)

COUNTRY	LENTIL	YELLOW	GREEN	OTHER		AUSTRIAN WINTER	BLACKEYE	SEED	TOTAL
				N.E.C.					
<b>NORTH AMERICA</b>									
Barbados	24	24		20					68
Belize				51					51
Bermuda				8					8
Canada	2116	621	11228	8636				5050	27651
Costa Rica		10226	357	2				1991	359
Cuba									12218
Dominican Republic			6						6
French W. Indies	64							445	64
Guatemala	194		123					13	762
Haiti	6908			20			40		6941
Honduras									40
Jamaica & Dep.		8		5					14
Leeward-Windward	169			217					386
Mexico	2145	47	1506	690			14	3400	7787
Netherlands-Antilles									14
Nicaragua	642								642
Panama								9	9
<b>SOUTH AMERICA</b>									
Argentina								64	64
Bolivia	1306		1395						2701
Brazil					4			20	24
Chile								383	383
Colombia	31	109	588	601				34	1330
Ecuador								353	34
Peru	2591		689	281					3913
Venezuela			408						408
<b>EUROPE</b>									
Armenia	299								299
Belgium & Lux.	143	234					235		378
Cyprus									235
Denmark								109	109
Finland								139	139
France	20							266	286
Germany	463							103	566
Greece	1167								1167
Hungary								329	329
Iceland			67						67
Italy	3135		437				5	826	4403
Netherlands	391		130					416	806
Norway								38	168
Poland								24	24
Portugal	879						79	15	958
Spain	27113		279					674	27406
Sweden	285								959
United Kingdom							134	1015	1149
<b>OCEANIA</b>									
Australia	345	654							345
French Pacific Is.									654
Other Pacific Is.		350							350

# PEAS, DRY: U.S. EXPORTS BY COUNTRY OF DESTINATION

## October 2003-September 2004

(Data in Metric Tons)

COUNTRY	LENTIL	YELLOW	GREEN	OTHER N.E.C.	AUSILIAN WINTER	BLACKEYE	SEED	TOTAL
<b>ASIA</b>	345							345
Afghanistan		654						654
Azerbaijan, Rep.		350	192	21	25		86	350
Vietnam		18	16	125	5		39	342
Afghanistan	6	7	1286		54		43	199
Bahrain								1482
Bangladesh	98	25						29
Cambodia	4							353
Hong Kong	96		136	120				1258
India	290		562	73	40		91	111
Indonesia			3373	5	49		57	3798
Iran	23		26	424	4		559	612
Iraq							10	10
Jordan			196	300				517
Korea	21		296					2802
Laos		2506						1571
Lebanon	574	998	15751					15754
Malaysia	4							288
Nepal	288							791
Nepal	772					20		780
Oman	780							780
Pakistan								17
Philippines							17	17
Qatar	185	641	884	498	342		18	2568
Singapore			41	209				250
Sri Lanka			150				1	150
Turkey			150				1	150
<b>AFRICA</b>								
Angola	938	5583	568	80				7169
Benin	349		258					607
Burkina Faso	1903		490					2392
Burundi		1150	3027					4177
Central Africa Rep.			100					100
Chad			476					476
Congo	3437	980	1731					6148
Djibouti		159						159
Egypt				5				5
Ethiopia	5691		6966	8879				21536
Eritrea	11101		4525					15626
Guinea		1159						1159
Ivory Coast			524					524
Kenya	70	2323	3975	2				6369
Lesotho			600					600
Liberia	200	2423	407					3029
Mauritania	538	762						1300
Rwanda		1181						1181
Senegal	208							208
Sierra Leone	1185	600						1785
Somalia	1930			292				2222
So. Africa, Rep of	159			17			255	452
Sudan	9046	1172	5448		20			15666
Tanzania		3118	1618					4736
Uganda		1531						1531
Zimbabwe							8	8
<b>OTHER</b>	139		1651					1810
Oct-03	91014	38609	72657	21604	543	899	17164	242491

Source: Foreign Agricultural Service, Compiled by USDA Market News

Note: Other n.e.c. consists of Peas other ex seed and Split Peas.

Note: Annual Totals are adjusted monthly to reflect current data and adjustments to previous data

## U.S. Exports, Dry Beans (cwt)

BEANS	Oct 03-Sep 04	Oct 02-Sep 03	Oct 01-Sep 02	Oct 00-Sep 01	Oct 99-Sep 00	Oct 98-Sep 99
PEA BEAN	1,149,421	1,458,753	1,400,783	1,884,420	1,559,969	2,066,559
GREAT NORTHER	270,365	1,050,382	1,079,446	1,129,109	828,660	889,204
LIMA	284,713	388,896	335,585	313,078	417,261	313,277
WHITE N.E.C.	32,773	264,216	19,869	31,583	32,553	34,471
KIDNEY	239,024	721,700	442,041	710,966	602,992	626,774
PINTO	2,033,829	1,134,509	1,947,049	1,869,411	1,513,421	2,118,110
BLACK	628,010	1,083,775	431,061	706,624	607,863	450,454
BEANS N.E.C.**	610,530	697,808	953,018	1,365,290	683,835	890,769
SEED	614,078	527,109	679,903	574,847	304,813	328,528
SMALL RED	220,356	167,901	97,562	141,254	203,099	218,086
<b>TOTAL</b>	<b>6,083,100</b>	<b>7,495,048</b>	<b>7,386,318</b>	<b>8,726,584</b>	<b>6,754,467</b>	<b>7,936,229</b>

\*\* Bean, N.E.C. includes Beans Other, Beans other Ex Seed, Beans Misc, Chickpeas, Cranberry, and Mung Beans

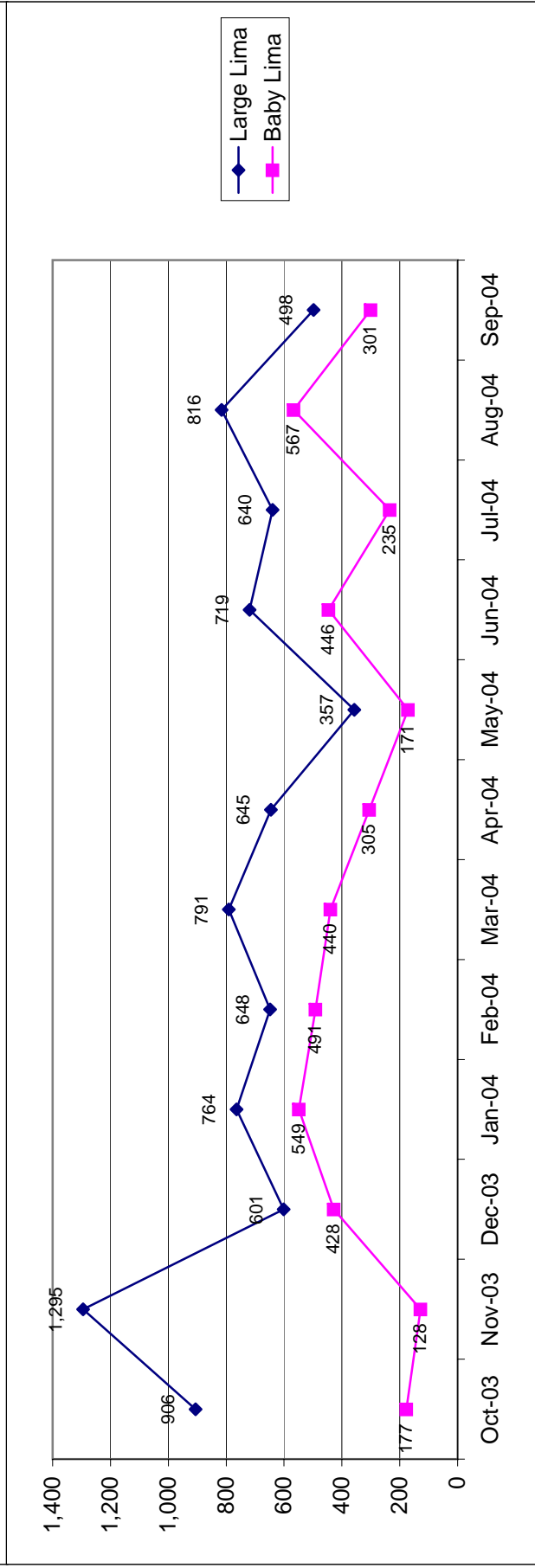
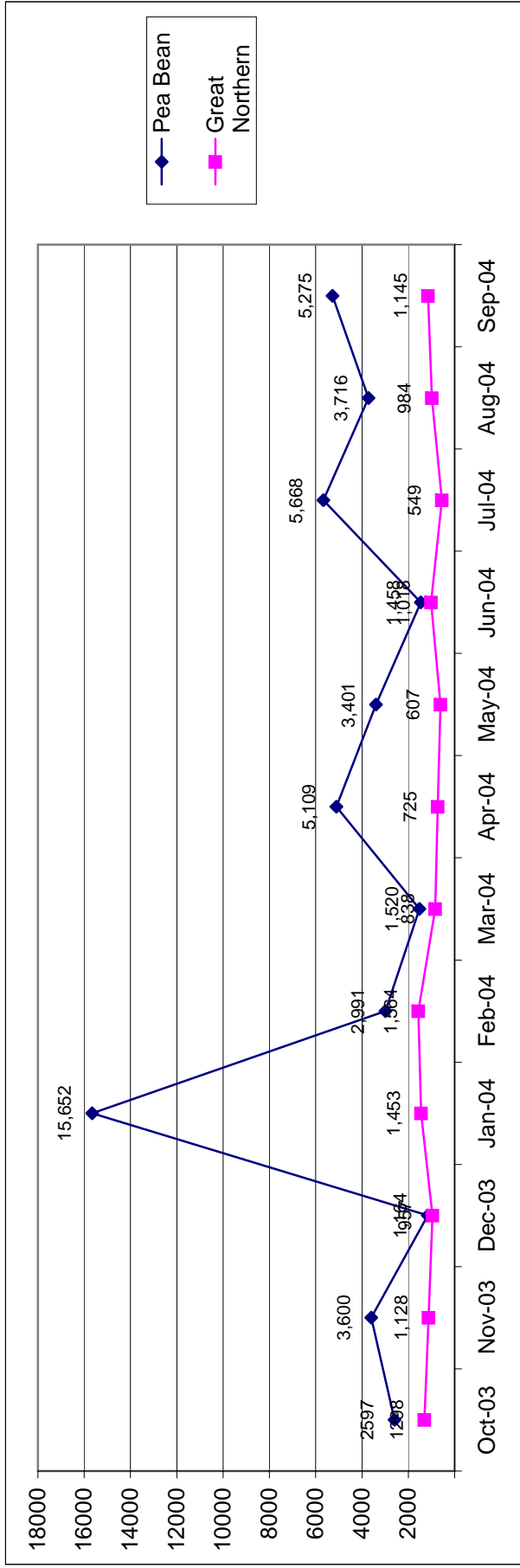
## U.S. Exports, Dry Ripe Peas (cwt)

PEAS	Oct 03-Sep 04	Oct 02-Sep 03	Oct 01-Sep 02	Oct 00-Sep 01	Oct 99-Sep 00	Oct 98-Sep 99
AUSTRIAN WINTER	11,977	17,808	23,105	48,885	17,169	14,414
BLACKEYE	19,810	32,639	90,952	98,012	138,565	97,196
GREEN	1,601,358	1,558,988	1,058,129	1,223,969	1,034,381	1,337,630
LENTIL	2,005,953	1,996,072	2,541,141	1,727,143	1,810,762	1,679,426
OTHER N.E.C.	476,157	382,224	506,640	297,342	296,526	812,637
SEED	378,292	330,029	229,388	232,720	475,271	707,330
YELLOW	850,951	292,109	293,736	147,580	204,024	341,818
<b>TOTAL</b>	<b>5,344,497</b>	<b>4,609,871</b>	<b>4,743,092</b>	<b>3,775,650</b>	<b>3,976,699</b>	<b>4,990,451</b>

# BEANS, DRY: U.S. EXPORTS BY MONTH

## October 2003-September 2004

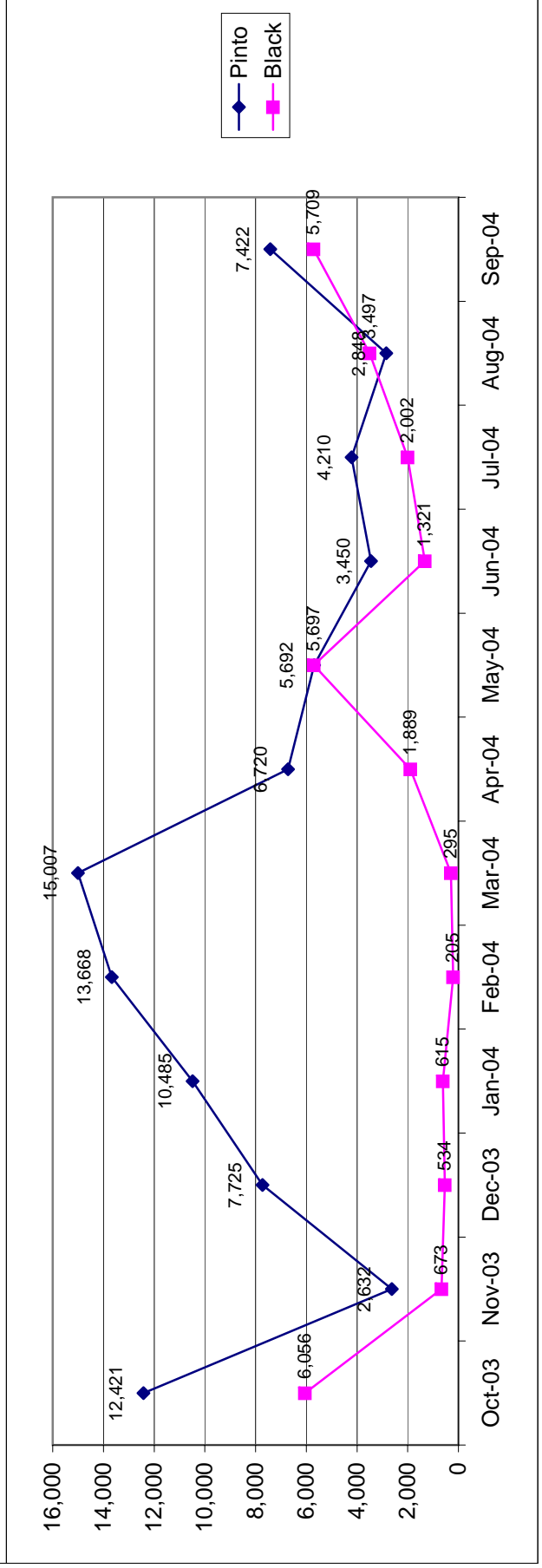
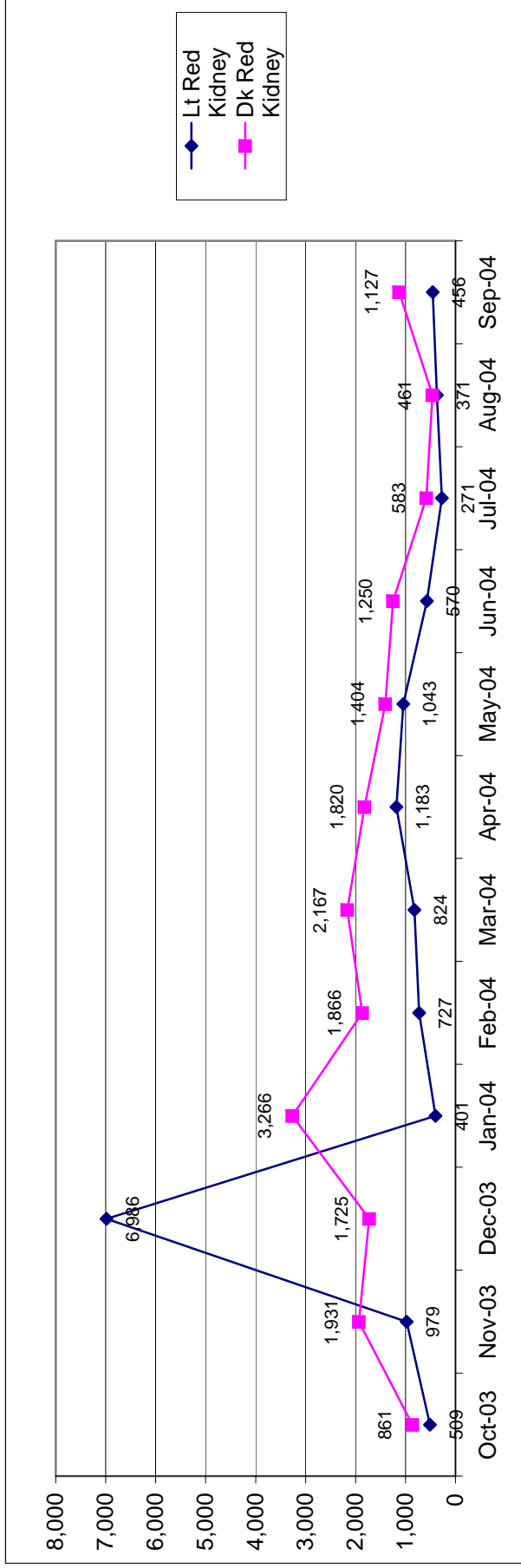
Data in Metric Tons



# BEANS, DRY: U.S. EXPORTS BY MONTH

## October 2003-September 2004

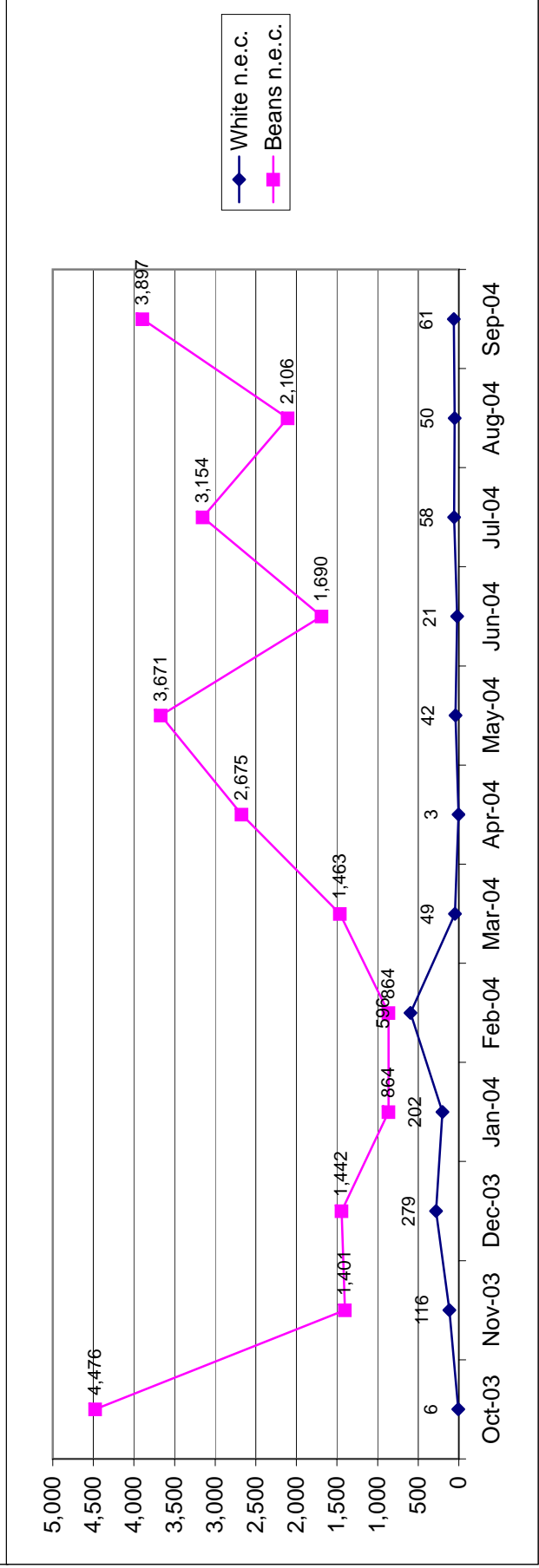
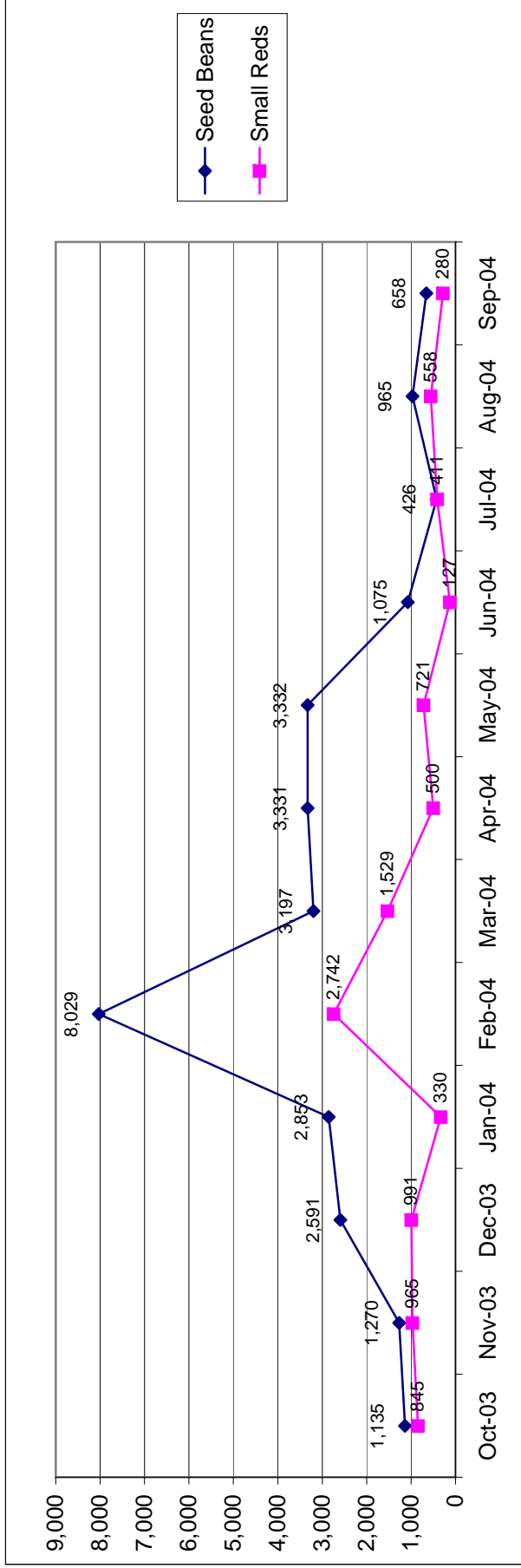
Data in Metric Tons



# BEANS, DRY: U.S. EXPORTS BY MONTH

## October 2003-September 2004

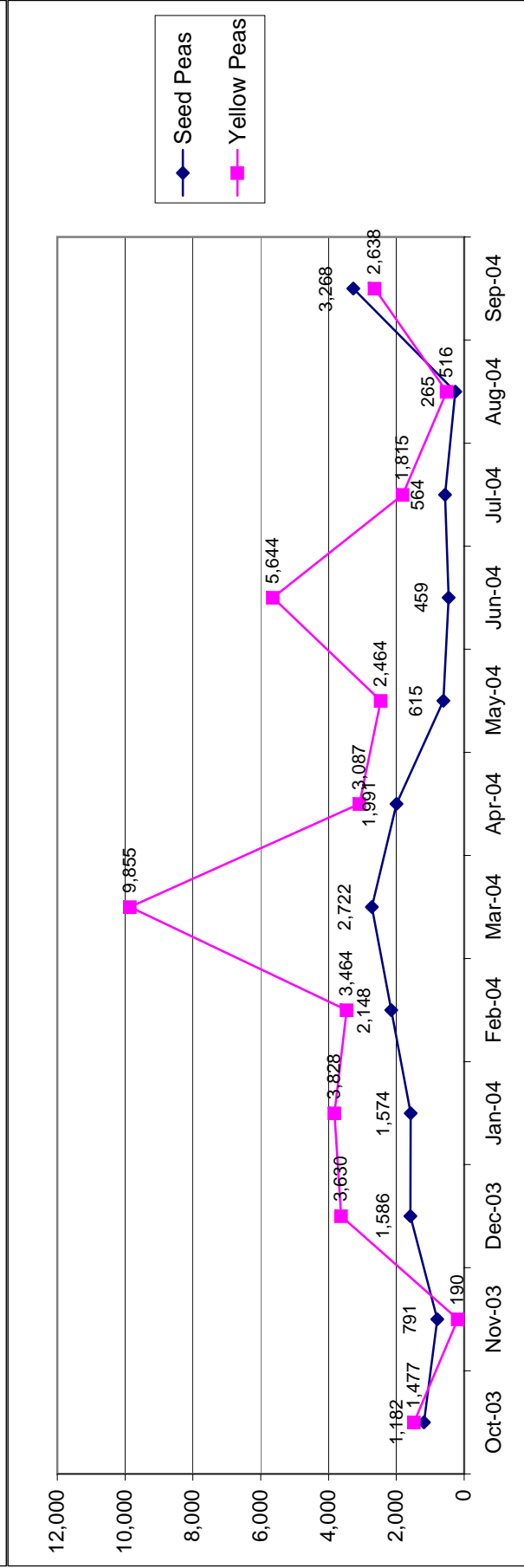
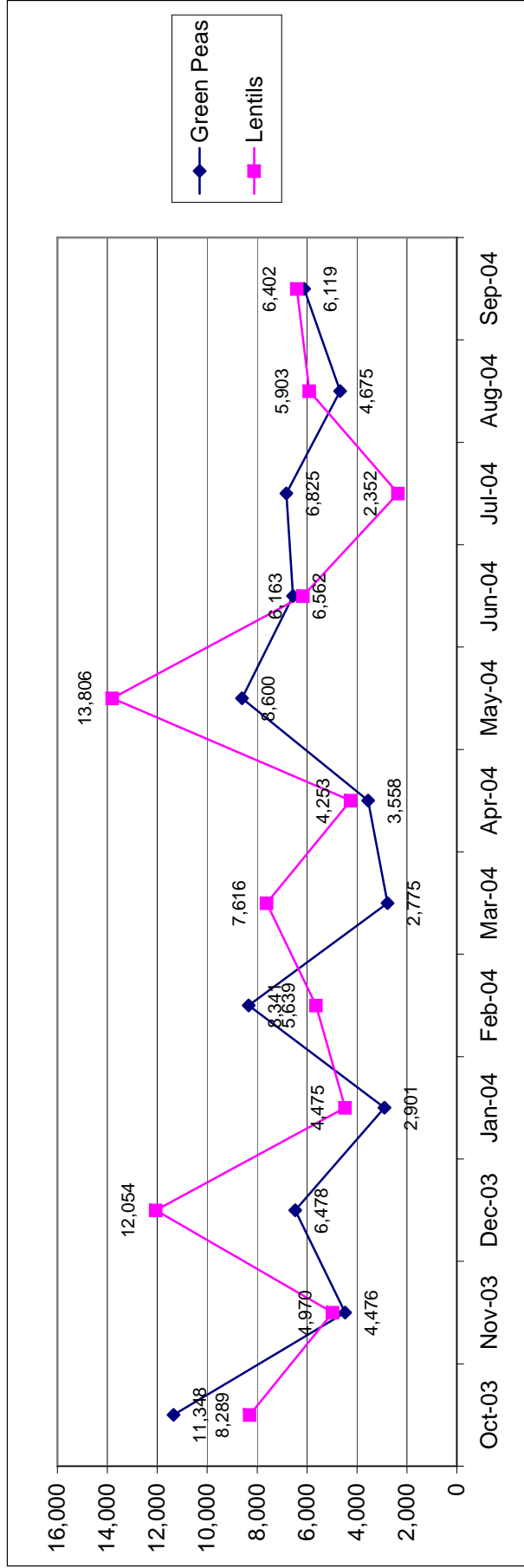
Data in Metric Tons



# PEAS, DRY: U.S. EXPORTS BY MONTH

## October 2003-September 2004

Data in Metric Tons



# CANADIAN EXPORTS BY COUNTRY OF DESTINATION

(Data in 1,000 KGM, Calendar Year)

COUNTRY	LENTILS		DRY PEAS		DRY BEANS		CHICKPEAS	
	2004	2003	2004	2003	2004	2003	2004	2003
<b>NORTH AMERICA</b>								
Costa Rica	1528		27	21127	1034			
Cuba					266			
Dominican Rep.						10696		
Guatemala		1876				1452		
Haiti						1974		
Honduras								
Jamaica & Dep.								
Mexico	2634	22916	388	3307		2117		1757
Nicaragua								
Panama	174	1524				1675		
Trinidad & Tobago	218	1679	267	4376			474	704
United States	776	7823	3036	28512		74517	577	3517
<b>SOUTH AMERICA</b>								
Argentina	522	4598						
Brazil	466	12250	323	10890		20559		2486
Chile	1825	9030	191	2952		3159		889
Colombia	4429	40020	1583	26282		49265		2785
Ecuador	1418	8412		2555		8413		
Guyana			224	2609		1524		
Peru	1403	7147	735	9437		6769		
Surinam								
Uruguay	529	3047						
Venezuela	2047	6728	2233	3702		9441		2275
<b>EUROPE</b>								
Austria	1059	10213						
Belgium & Luxembourg			176	17323		3868		283
Bulgaria								
Croatia					105	914		
Cyprus	99	2525						
Czech Republic	1077	6759						
France								
Georgia, Republic of								
Germany	1307	8006						
Greece	1960	6482						
Ireland					461	3580		4971
Italy	2074	17576	208	19632		7915		6392
Netherlands	163	3186	42			1545		1054
Poland								
Portugal	483	1362			80	3700		1252
Romania								
Russian Federation			298	3841		1919		
Slovakia								
Slovenia								
Spain	936	12831	17845	230155		7314		3082
Sweden								
Switzerland								
Turkey	5198	12993	547					
United Kingdom	256	1680	62	2240		1554		1297
<b>ASIA</b>								
Bangladesh	2810	9290	34990			32708		
China (Mainland)			18829	27565		65195		6350
Hong Kong								
India	915	10609	35822	271037		217939		28873
Indonesia			1096	7440		2394		43443
Israel			750	1836		2004		1955
Iraq	1082	2347			255	1079		3993

cont.



# CANADIAN EXPORTS BY COUNTRY OF DESTINATION

(Data in 1,000 KGM, Calendar Year)

COUNTRY	LENTILS		DRY PEAS		DRY BEANS		CHICKPEAS	
	2004	2003	2004	2003	2004	2003	2004	2003
Japan								
Jordan		1079	797	6110	25862	368	11753	2027
Korea								5116
Kuwait								2527
Lebanon	226	2176						1581
Malaysia								
Nepal								
Pakistan	206	12945	2546	10009	2487			6868
Philippines			330	5388	5603			14312
Saudi Arabia	809	1290	135	4023	3285			1535
Sri Lanka	166	9290	78	1934	3352			1142
Taiwan			1739	8119	7592			
Thailand								
United Arab Emirates	1497	3983	628	10981	7340			232
Yemen			173					1571
<b>OCEANIA</b>								
Australia								
New Zealand								
Other Pacific Is.						4123		
<b>AFRICA</b>								
Algeria	10759	50899	782	2048	5485	24	6571	3337
Angola						25	2699	1694
Congo (Brazzaville)								
Egypt	2414	16713		1836				1699
Eritrea								
Kenya								
Liberia								
Mauritius								
Morocco	906	5052	1029	1658				
Mozambique								
Sierra Leone								
So. Africa, Rep of	47		170	12367	3330			
Tanzania				2720	10250			
Tunisia								
Zimbabwe								
<b>OTHERS</b>								
	1134	8607	2865	23844	14240	1437	3218	670
<b>TOTAL</b>	55552	367142	130942	865851	631143	13151	157023	3062
								7846
								87385
								108674

## USDA/CCC Purchases of Dry Edible Beans, Peas, & Lentils Under PL480 Program for Export Distribution (MT)

CLASS	FY04	FY03	FY02	FY01	FY00	FY99
PEA BEAN	30,370	190	0	889	19,329	5,070
PINTO	34,400	60,900	21,000	18,440	24,560	9,220
GREAT NORTHERN	160	1,120	8,580	8,989	3,810	230
SMALL RED	760	3,870	2,180	2,558	6,060	4,120
BLACK	2,380	1,970	1,450	1,170	1,740	370
LIGHT RED KIDNEY	0	700	0	680	0	610
DARK RED KIDNEY	880	2,520	4,470	4,000	2,160	2,390
LENTIL	36,760	78,350	47,410	31,089	27,300	17,510
GREEN PEA	31,960	12,280	19,050	28,490	28,490	41,420
SPLIT GREEN PEAS	16,980	12,450	3,790	3,360	0	0
YELLOW PEA	24,970	800	4,600	8,300	12,060	8,900
SPLIT YELLOW PEAS	9,610	7,030	12,560	1,210	0	0
<b>TOTAL</b>	189,230	182,180	125,090	109,175	125,509	89,840

## USDA Purchases of Canned Dry Beans, Peas and Lentils for Use in Various Domestic Feeding Programs (1,000 pounds)

CLASS	Oct 03-Sep 04	Oct 02-Sep 03	Oct 01-Sep 02	Oct 00-Sep 01	Oct 99-Sep 00	Oct 98-Sep 99
BABY LIMA	315	665	420	420	0	700
BLACKEYE	3,612	3,358	1,085	16,746	4,665	1,365
BLACK	175	140	175	140	0	350
GARBANZO	350	1,260	1,400	560	595	175
GREAT NORTHERN	175	350	770	595	175	840
PEAS	11,342	10,419	11,117	11,111	8,316	7,217
RED KIDNEY	876	1,225	840	1,155	350	1,855
PINK	735	2,274	2,239	1,225	1,330	1,540
PINTO	3,534	5,144	5,564	6,579	3,079	5,984
REFRIED BEAN	6,168	7,954	7,734	8,313	5,697	9,615
SMALL RED	840	2,589	2,554	2,239	1,470	1,680
VEGETARIAN BEAN	10,603	12,655	11,314	13,465	11,733	14,070
<b>TOTAL</b>	<b>38,725</b>	<b>48,033</b>	<b>45,212</b>	<b>62,548</b>	<b>37,410</b>	<b>45,391</b>

## USDA Purchases of Dry Edible Beans, Peas and Lentils for Use in Various Domestic Feeding Programs (1,000 pounds)

CLASS	Oct 03-Sep 04	Oct 02-Sep 03	Oct 01-Sep 02	Oct 00-Sep 01	Oct 99-Sep 00	Oct 98-Sep 99
BABY LIMA	1,371	1,452	847	2,580	1,089	403
BLACKEYE	1,855	1,331	1,895	2,903	3,871	1,008
GARBANZO	0	0	0	0	0	0
GREAT NORTHERN	4,596	4,354	3,104	7,337	3,869	2,458
GREEN PEA	0	0	0	0	0	0
SPLIT GREEN PEA	0	0	0	1,693	0	0
LENTIL	0	0	0	1,210	0	0
PEA BEAN	0	0	0	1,450	80	80
PINK	0	0	0	927	0	0
PINTO	13,220	14,389	10,477	23,566	12,495	18,076
RED KIDNEY	5,080	3,709	2,460	4,153	2,097	726
SMALL RED	0	0	0	1,530	0	0
SMALL WHITE	0	0	0	0	0	0
<b>TOTAL</b>	<b>26,122</b>	<b>25,235</b>	<b>18,783</b>	<b>47,349</b>	<b>23,501</b>	<b>22,751</b>

# WORLD PULSE PRODUCTION (1,000 Metric Tons)\*\*

COUNTRY	2004	2003	2002	2001	2000	COUNTRY	2004	2003	2002	2001	2000
<b>WORLD</b>	61310	57707	56470	53284	54862	<b>ASIA</b>	28961	27003	27117	23203	25024
<b>AFRICA</b>						Afghanistan	0	50	50	0	0
Angola	9390	9461	9280	9422	8493	Bangladesh	352	345	344	367	383
Benin	128	124	119	94	104	China	5669	5209	6020	5122	4696
Burkina Faso	391	391	439	439	175	India	14600	13003	12707	10611	13478
Burundi	256	280	280	269	253	Indonesia	318	318	336	289	291
Cameroon	266	266	266	269	253	Iran	600	581	658	558	562
Chad	121	121	121	126	94	Japan	83	83	101	96	104
Congo	194	193	191	194	200	Korea, DPR	300	300	300	300	290
Egypt	519	519	519	516	425	Lebanon	15	15	15	12	13
Ethiopia	487	491	492	1160	996	Myanmar	2792	2792	2613	2141	1665
Eritrea	41	37	39	55	48	Nepal	265	262	250	226	221
Guinea	60	60	60	55	55	Pakistan	953	1073	763	770	935
Kenya	370	370	415	387	453	Philippines	56	56	56	56	56
Madagascar	90	90	89	94	94	Syria	240	325	290	276	174
Malawi	247	278	262	228	226	Thailand	305	302	274	294	282
Mali	108	108	92	157	153	Turkey	1648	1569	1648	1455	1316
Morocco	252	252	263	201	113	Vietnam	256	254	239	256	245
Mozambique	205	205	205	205	205	Yemen	61	61	61	64	63
Niger	570	570	421	369	288						
Nigeria	2250	2250	2224	2222	2200	<b>EUROPE</b>	8085	7800	8138	7958	7210
Rwanda	215	257	263	258	231	Albania	27	28	27	24	28
Senegal	35	35	13	32	48	Austria	113	113	113	104	70
Sierra Leone	56	56	56	55	52	Belarus	451	332	279	281	291
South Africa	101	80	86	135	111	Bosnia Herzg	18	17	20	17	12
Sudan	272	272	273	265	268	Bulgaria	25	25	23	24	18
Tanzania	445	445	445	445	433	Croatia	20	17	23	12	14
Togo	50	50	47	47	47	Czech Rep	55	65	66	91	85
Tunisia	61	61	59	55	63	Denmark	121	124	150	113	139
Uganda	698	698	696	671	585	France	2069	1949	2035	1877	2066
Zimbabwe	53	53	53	53	52	Germany	438	461	478	641	471
						Greece	42	42	41	42	42
						Hungary	39	34	54	70	55
						Ireland	8	14	8	10	8
<b>NORTH/CENTRAL AMERICA</b>	8680	7030	6615	6770	7928	Italy	125	121	129	127	121
Canada	4602	3067	2292	3344	4443	Lithuania	48	49	63	52	73
Dominican Rep	50	52	53	54	46	Macedonia	29	29	28	25	28
El Salvador	84	78	83	74	68	Moldova Rep	31	29	48	76	30
Guatemala	132	130	129	129	127	Netherlands	16	16	16	16	13
Haiti	68	68	71	71	75	Poland	272	275	127	315	314
Honduras	70	69	50	59	85	Portugal	21	21	22	22	22
Mexico	1752	1752	1893	1495	1230	Romania	54	62	55	61	37
Nicaragua	224	230	197	177	173	Russian Fed	1529	1600	1797	1581	1173
USA	1530	1406	1700	1224	1533	Slovakia	54	42	47	57	56
						Spain	566	533	485	303	385
<b>SOUTH AMERICA</b>	3955	4256	4016	3377	3984	Sweden	80	80	85	77	69
Argentina	277	277	336	314	346	UK	968	968	908	959	794
Brazil	3064	3328	3082	2466	3058	Ukraine	663	567	802	827	652
Chile	96	96	81	105	92						
Colombia	170	170	153	156	156						
Ecuador	65	68	62	39	34	<b>OCEANIA</b>	2240	2156	1305	2555	2224
Paraguay	67	67	67	65	47	Australia	2200	2116	1267	2507	2152
Peru	135	169	170	168	183	New Zealand	32	32	30	40	65

\*\*\*Latest information available  
Source: FAO United Nations

**WORLD DRY BEAN PRODUCTION (1,000 Metric Tons)\*\***

COUNTRY	2004	2003	2002	2001	2000	COUNTRY	2004	2003	2002	2001	2000
<b>WORLD</b>	18725	19736	18859	16601	17134	<b>ASIA</b>	8561	9038	7890	7271	7431
<b>AFRICA</b>	2601	2676	2693	2773	2525	Bangladesh	49	48	49	53	54
Angola	58	66	58	89	75	Cambodia	24	24	24	17	15
Benin	105	101	100	78	86	China	2009	1908	2158	1806	1658
Burundi	220	245	245	249	187	India	3000	3600	2200	2200	2700
Cameroon	170	170	170	170	170	Indonesia	317	317	335	288	290
Chad	78	78	78	18	72	Iran	175	170	210	144	181
Congo	114	112	111	117	125	Japan	82	82	100	95	104
Egypt	53	55	53	40	33	Kazakhstan	3	4	4	9	7
Ethiopia	116	116	116	211	147	Korea DPR	300	300	300	300	290
Kenya	255	255	300	280	330	Korea Rep	20	20	20	22	21
Madagascar	70	70	70	75	74	Myanmar	1650	1650	1600	1467	1285
Malawi	79	110	94	60	58	Nepal	30	30	29	27	25
Morocco	12	12	12	12	12	Pakistan	170	166	168	143	130
Rwanda	198	239	247	242	215	Philippines	28	28	28	28	27
Somalia	0	16	16	16	15	Sri Lanka	10	10	10	10	12
South Africa	87	68	67	112	87	Thailand	225	222	216	238	226
Sudan	30	30	25	25	31	Turkey	260	250	250	225	230
Tanzania	270	270	270	270	260	Viet Nam	160	158	144	161	145
Togo	45	45	45	41	42						
Uganda	535	535	535	511	420	<b>EUROPE</b>	645	583	594	589	511
Zimbabwe	50	50	50	50	49	Albania	25	26	25	22	25
	3223	3461	3931	2835	2952	Belarus	271	222	188	178	168
<b>NORTH / CENTRAL AMERICA</b>						Bosnia Herzg	9	8	11	10	11
Belize	4	5	4	6	5	Bulgaria	10	9	8	11	8
Canada	290	347	407	289	261	Croatia	16	13	19	8	19
Costa Rica	11	15	13	16	16	France	9	9	8	9	8
Cuba	130	127	107	99	106	Greece	23	23	22	23	22
Dominican Rep	26	29	29	30	22	Ireland	6	12	6	8	6
El Salvador	84	83	83	75	68	Italy	15	12	20	20	20
Guatemala	95	95	95	95	91	Lithuania	4	5	4	4	3
Haiti	34	34	33	33	33	Macedonia	16	15	14	12	14
Honduras	70	69	50	59	85	Moldova	20	19	22	37	14
Mexico	1400	1400	1549	1063	888	Netherlands	5	5	5	5	3
Nicaragua	224	230	197	177	173	Poland	34	34	46	41	47
USA	848	1021	1360	888	1198	Portugal	5	5	6	6	6
	3656	3929	3712	3084	3678	Romania	29	37	34	36	22
	216	216	278	263	297	Russian Fed	12	9	6	6	6
Argentina	32	32	20	14	13	Slovenia	1	1	1	1	1
Bolivia	3054	3310	3064	2454	3038	Spain	18	14	16	18	19
Brazil	48	48	45	60	44	Ukraine	61	53	69	93	56
Chile	135	136	120	124	125		40	50	39	39	37
Colombia	50	49	48	30	26		40	50	39	39	37
Ecuador	54	54	54	53	37						
Paraguay	43	59	63	61	70						
Peru	21	21	17	22	25						
Venezuela						<b>OCEANIA</b>					
						Australia	40	50	39	39	37

\*\*\*!Latest information available  
Source: FAO United Nations

**WORLD GARBANZO (CHICK-PEA) PRODUCTION (1,000 Metric Tons)\*\***

COUNTRY	2004	2003	2002	2001	2000	COUNTRY	2004	2003	2002	2001	2000
<b>WORLD</b>	8572	7110	8286	6815	7886	<b>ASIA</b>	7673	6148	7266	5333	6718
<b>AFRICA</b>	373	372	381	353	314	Bangladesh	10	11	11	14	14
Algeria	15	15	15	12	7	China	10	8	7	5	4
Egypt	11	12	14	13	15	India	5770	4130	5473	3855	5118
Eritrea	5	1	2	8	3	Iran	260	255	290	269	242
Ethiopia	181	181	180	176	165	Israel	16	17	17	13	14
Kenya	19	19	19	18	19	Jordan	2	2	3	1	2
Malawi	35	35	35	35	35	Kazakhstan	3	4	2	2	1
Morocco	43	43	51	32	15	Lebanon	3	3	3	2	2
Sudan	30	30	30	23	21	Myanmar	200	200	212	119	84
Tanzania	25	25	25	25	24	Nepal	11	12	11	12	12
Tunisia	6	6	6	7	8	Pakistan	548	675	362	397	565
Uganda	3	3	3	3	3	Syria	45	87	89	60	65
						Turkey	650	600	600	535	548
						Yemen	36	36	36	37	37
<b>NORTH/CENTRAL AMERICA</b>	295	308	391	781	621		86	98	104	78	62
Canada	55	68	157	455	387	<b>EUROPE</b>					
Mexico	240	240	235	326	234	Bosnia Herzg	3	3	4	2	2
						Bulgaria	3	5	5	4	2
<b>SOUTH AMERICA</b>	5	7	8	11	9	Greece	2	2	2	2	2
Argentina	1	1	1	1	1	Italy	7	6	7	7	4
Chile	3	3	3	4	3	Portugal	1	1	1	1	1
Peru	1	2	3	6	4	Russian Federation	12	16	12	8	5
						Spain	57	65	73	53	46
							140	178	136	258	162
						<b>OCEANIA</b>					
						Australia	140	178	136	258	162

\*\*\*Latest information available  
Source: FAO United Nations

## WORLD PEA PRODUCTION (1,000 Metric Tons)\*\*\*

COUNTRY	2004	2003	2002	2001	2000	COUNTRY	2004	2003	2002	2001	2000
<b>WORLD</b>	12145	10170	9981	10447	10628	Myanmar	170	170	150	100	28
<b>AFRICA</b>	376	377	372	349	313	Pakistan	55	53	57	61	78
Algeria	4	4	4	4	2	Turkey	3	4	4	3	3
Burundi	34	34	33	33	30	Turkmenistan	10	10	10	8	8
Congo	73	73	73	70	68	Yemen	2	2	2	2	2
Ethiopia	155	155	153	147	118		4927	4606	5139	5324	4771
Lesotho	3	3	3	3	6	<b>EUROPE</b>					
Libyan	6	6	6	6	6	Austria	104	104	104	96	62
Madagascar	7	7	7	7	8	Belarus	180	110	91	103	123
Morocco	22	23	22	13	6	Belgium	9	9	5	0	0
Rwanda	17	18	16	16	15	Bosnia	4	3	4	2	2
South Africa	1	1	1	1	1	Bulgaria	10	10	9	9	5
Tanzania	28	28	28	28	28	Czech Rep	45	55	56	83	75
Tunisia	5	5	5	4	3	Denmark	110	106	139	11	137
Uganda	18	18	16	15	20	Estonia	5	5	5	5	5
						Finland	10	10	11	12	12
<b>NORTH / CENTRAL AMERICA</b>	3838	2401	1595	2232	3066	France	1674	1620	1663	1660	1937
Canada	3308	2124	1366	2023	2864	Germany	370	401	413	560	409
Jamaica	3	3	2	1	2	Hungary	35	30	49	64	48
Mexico	4	4	4	4	3	Ireland	2	2	2	2	2
USA	520	266	220	200	193	Italy	30	30	26	18	12
						Latvia	3	4	3	3	3
<b>SOUTH AMERICA</b>	72	96	93	83	86	Lithuania	22	22	37	30	50
Argentina	32	32	30	25	23	Macedonia	2	2	2	2	3
Bolivia	5	5	5	5	5	Moldova Rep	10	10	25	38	15
Brazil	0	8	8	4	4	Netherlands	7	7	7	7	6
Chile	1	1	1	3	2	Poland	24	27	40	40	46
Ecuador	2	2	3	2	2	Romania	23	23	20	22	14
Guyana	1	1	1	1	1	Russian Fed	1100	1052	1268	1272	815
Paraguay	3	3	3	3	3	Slovakia	32	21	25	23	18
Peru	26	41	40	38	45	Spain	181	146	91	49	57
Uruguay	3	3	3	3	3	Sweden	79	79	84	76	67
						Switzerland	24	18	16	11	9
						UK	288	288	292	369	309
						Ukraine	492	371	613	619	499
<b>ASIA</b>	2435	2252	2576	2034	1873		497	438	207	455	519
Bangladesh	14	15	16	17	18	Australia	466	407	178	416	455
China	1350	1230	1500	1120	1020	New Zealand	31	31	29	39	64
India	800	730	800	700	700						
Kazakhstan	21	27	27	14	9						
Lebanon	3	3	3	3	2						

\*\*\*Latest information available  
Source: FAO United Nations





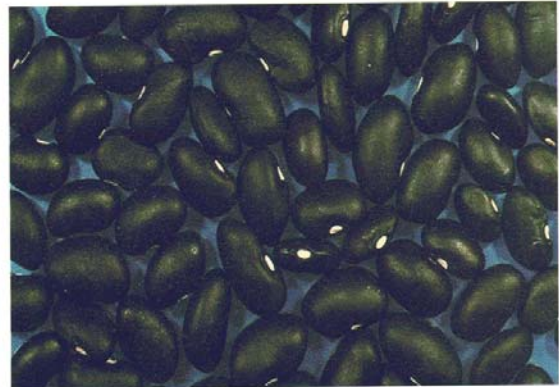
Pinto



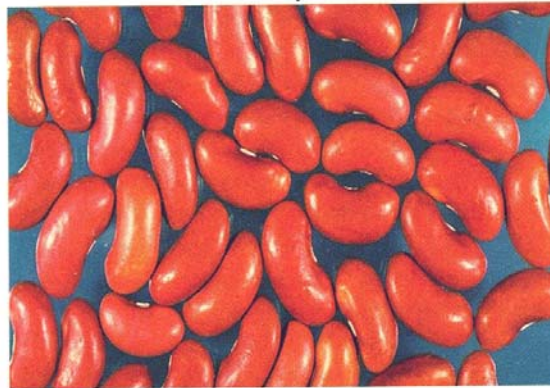
Great Northern



Navy



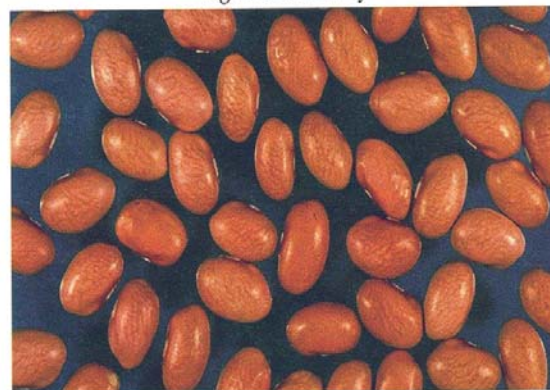
Black



Light Red Kidney



Anasazi



Pink



Small Red