

BEAN SUMMARY

1993

MARKET NEWS

USDA Agricultural Marketing Service

711 "O" Street, Greeley, Colorado USA 80631

Telephone: 303-353-9750 Fax: 303-353-9790



Released September 1994



USDA - AMS LIVESTOCK AND GRAIN MARKET NEWS

711 "O" Street
Greeley, Colorado USDA 80631
Telephone: 303-353-9750 Fax: 303-353-9790

TABLE OF CONTENTS

Dealer Price Trends - Graphs	Page
Pinto Northern Colo	1
Pink Southern Idaho	2
Pea Bean Michigan	3
Great Northern Western Nebraska, Eastern Wyoming	4
*Monthly Average Prices - By Crop Year - FOB Dealer	
Pinto, Great Northern, Small Red, Pink	5
Black Turtle Soup, Cranberry, Light Red Kidney	7
Light Red Kidney, Baby Lima, Blackeye, Pink (California)	9
Garbanzo, Small White, Pea Bean	10
*Monthly Average Prices - By Crop Year - FOB Grower	
Pinto, Great Northern, Small Red, Pink	6
Black Turtle Soup, Cranberry, Light Red Kidney	8
*Monthly Average Prices Peas & Lentils- By Crop Year - FOB Dealer and Grower	11-12
Dry Edible Beans, Production by Commercial Class and Canada Crop Production	13
Dry Edible Beans - Production by Commercial Class	14-15
Dry Pea and Lentil Production - ADPLA	16
Dry Pea and Lentil Production - USDA NASS	17
Dry Beans, U.S. Exports by Country of Destination	18-20
U.S. Exports of Dried Peas by Country of Destination	21-23
U.S. Exports, Dry Beans and Dry Ripe Peas	24
U.S.D.A. Purchases for Domestic Feeding Programs	25
U.S. Exports Shelled Beans Other Than Canned Dried, Beans Other Than Shelled, and Shelled Canned Dry Beans	26-27
World Pulse, Dry Bean, Garbanzo and Pea Production	28-31
Canadian Exports/Imports	32-34

**Average monthly prices are assembled by selected areas to give an indication of market trends rather than to provide a complete history of each area reported weekly. Average prices are numerical averages and are not weighted to reflect sales volume.*

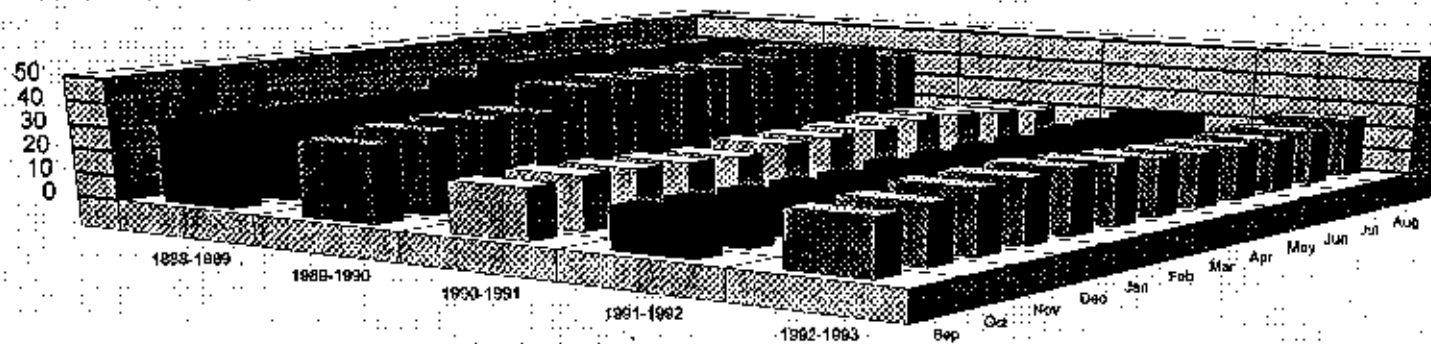
Monthly Average Prices Per Cwt. by Crop Year fob Dealer

Year	Sep	Oct	Nov	Dec	Jan	Feb	Mar	Apr	May	June	Jul	Aug	Avg
PINTO - Northern Colorado													
1988-1989	33.88	34.25	33.70	33.50	34.23	37.56	41.56	40.88	40.90	40.75	40.06	40.38	37.64
1989-1990	31.19	33.65	35.13	35.19	43.25	43.81	43.44	43.50	45.35	47.06	45.15	39.38	40.51
1990-1991	20.88	21.95	21.25	20.42	19.50	21.50	21.31	21.65	23.25	22.69	20.70	19.13	21.19
1991-1992	17.50	17.25	16.69	16.33	16.13	17.81	17.93	17.94	18.22	18.88	19.63	20.56	17.91
1992-1993	23.10	24.13	26.06	26.13	26.44	25.00	23.45	22.38	21.63	21.45	21.88	24.55	23.85

NQ-No Quote

NE-Not Established

Pintos Northern Colorado



Dealer - Prices Per Cwt. by Crop Year.

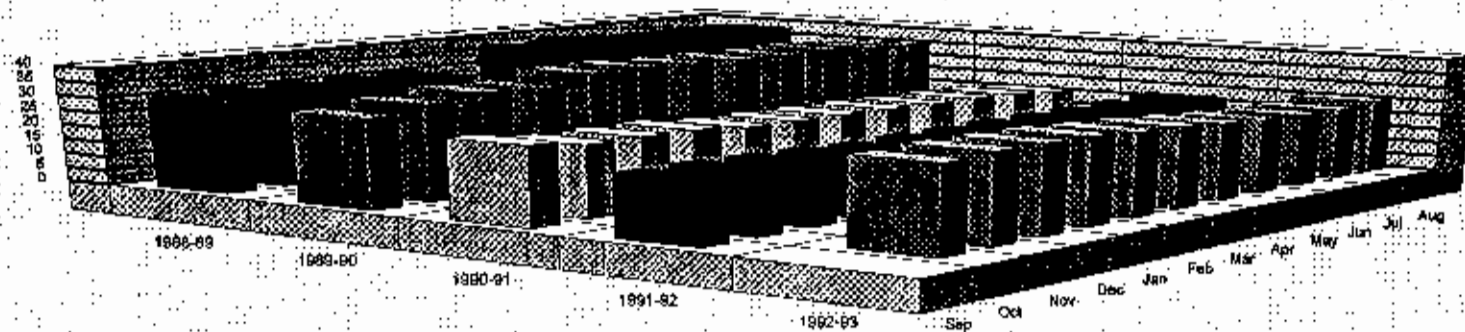
Monthly Average Prices Per Cwt. by Crop Year fob Dealer

Year	Sep	Oct	Nov	Dec	Jan	Feb	Mar	Apr	May	June	Jul	Aug	Avg
PINK - Southern Idaho													
1988-1989	31.00	31.69	31.80	31.58	31.65	N.Q.	38.00	38.50	38.25	37.63	37.63	37.56	35.03
1989-1990	30.33	32.60	34.50	34.00	37.05	37.31	36.63	36.50	36.25	36.63	35.75	34.33	35.16
1990-1991	26.50	24.30	24.47	24.33	22.95	22.81	22.75	22.69	22.75	22.38	21.75	20.75	23.16
1991-1992	20.56	20.90	20.56	20.33	19.56	20.06	20.15	20.50	20.63	20.63	21.00	21.75	20.55
1992-1993	N.E.	28.58	29.56	29.50	29.25	28.25	27.65	26.38	25.38	24.85	24.50	25.40	27.21

NQ - No Quote

NE - Not Established

Pinks Southern Idaho



Dealer - Prices Per Cwt. by Crop Year

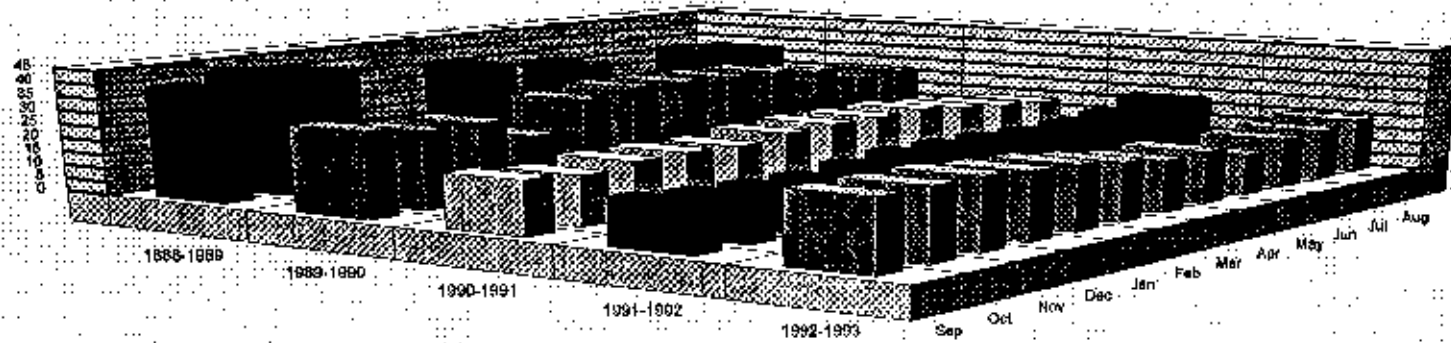
Monthly Average Prices Per Cwt. by Crop Year fob Dealer

Year	Sep	Oct	Nov	Dec	Jan	Feb	Mar	Apr	May	June	Jul	Aug	Avg
PEA BEAN - Michigan No. 1's													
1988-1989	40.17	43.33	42.38	N.E.	N.E.	37.94	N.E.	34.00	N.E.	N.E.	33.38	32.33	37.65
1989-1990	31.17	28.45	28.56	21.44	31.78	33.81	33.44	33.06	32.80	30.58	26.13	26.63	29.82
1990-1991	19.69	18.35	20.13	20.33	19.80	21.56	22.31	22.18	22.63	20.75	19.15	18.00	20.41
1991-1992	17.25	15.93	15.53	15.33	16.72	18.31	18.30	17.94	17.53	17.70	19.08	22.88	17.71
1992-1993	25.38	25.67	25.81	24.31	23.50	21.25	18.83	19.19	15.13	18.05	18.38	19.68	21.27

NC - No Quote

NE - Established

Pea Beans Michigan No. 1's



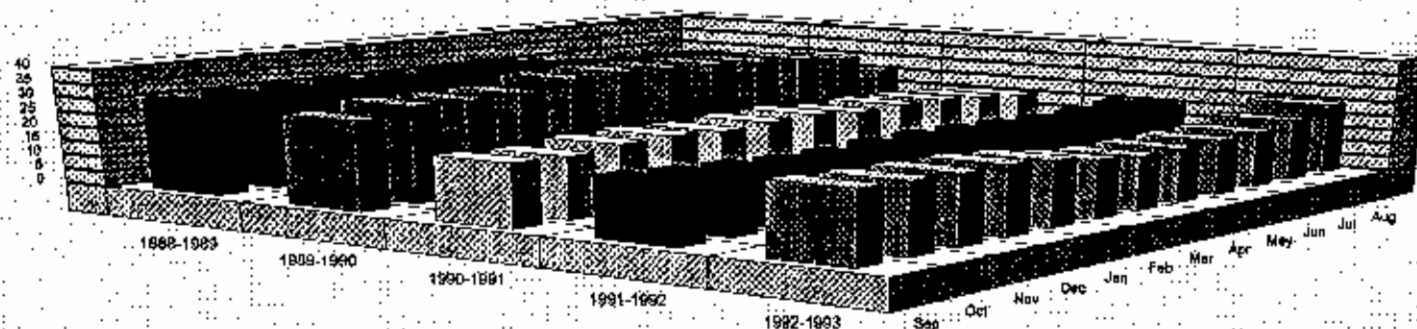
Dealer - Prices Per Cwt. by Crop Year

Monthly Average Prices Per Cwt. by Crop Year fob Dealer

Year	Sep	Oct	Nov	Dec	Jan	Feb	Mar	Apr	May	June	Jul	Aug	Avg
GREAT NORTHERN - Western Nebraska - Eastern Wyoming													
1988-1989	30.92	31.56	31.65	31.33	31.65	32.69	32.88	30.81	29.35	28.31	27.31	27.35	30.48
1989-1990	30.06	32.60	32.31	32.63	35.60	36.19	35.69	35.25	34.30	33.66	31.70	25.38	32.95
1990-1991	21.19	20.70	22.25	22.75	21.95	22.81	23.38	22.00	27.56	22.31	21.25	20.08	21.94
1991-1992	20.13	19.40	18.72	18.08	17.97	18.75	19.70	19.00	18.75	18.55	18.69	19.91	18.93
1992-1993	24.00	23.44	23.13	23.13	21.88	19.38	18.10	18.25	18.69	19.25	21.06	24.63	21.75

NO - No Quote NE - Not Established

Great Northerns Western Nebraska/Eastern Wyoming



Dealer - Prices Per Cwt. by Crop Year

Monthly Average Prices Per Cwt. by Crop Year fob Dealer

Year	Sep	Oct	Nov	Dec	Jan	Feb	Mar	Apr	May	June	Jul	Aug	Avg
PINTO - Northern Colorado													
1988-1989	33.88	34.25	33.70	33.50	34.23	37.56	41.56	40.88	40.90	40.75	40.06	40.38	37.64
1989-1990	31.19	33.65	35.13	35.19	43.25	43.81	43.44	43.50	45.35	47.06	45.15	39.38	40.51
1990-1991	20.88	21.95	21.25	20.42	19.50	21.50	21.31	21.65	23.25	22.69	20.70	19.13	21.19
1991-1992	17.50	17.25	16.69	16.33	16.13	17.81	17.93	17.94	18.22	18.88	19.63	20.56	17.91
1992-1993	23.10	24.13	26.06	26.13	26.44	25.00	23.45	22.38	21.63	21.45	21.88	24.55	23.85
PINTO - North Dakota/Minnesota													
1988-1989	33.58	34.00	32.50	32.38	33.73	37.50	40.25	40.25	39.88	39.75	38.88	38.56	36.73
1989-1990	N.E.	34.17	34.38	33.63	44.38	N.E.	42.00	42.38	42.92	45.88	41.50	34.25	39.55
1990-1991	19.44	20.05	20.00	19.75	18.63	20.00	19.88	19.92	22.19	N.E.	N.E.	16.25	19.61
1991-1992	14.88	15.30	15.16	14.83	14.25	16.31	16.23	15.69	15.78	16.78	17.59	18.91	15.98
1992-1993	20.75	21.31	24.16	24.13	24.06	22.88	21.25	18.63	17.31	16.80	17.75	21.65	20.89
GREAT NORTHERN - Western Nebraska - Eastern Wyoming													
1988-1989	30.92	31.56	31.65	31.33	31.65	32.69	32.88	30.81	29.35	28.31	27.31	27.35	30.48
1989-1990	30.06	32.60	32.31	32.63	35.60	36.19	35.69	35.25	34.30	33.66	31.70	25.38	32.95
1990-1991	21.19	20.70	22.25	22.75	21.95	22.81	23.38	22.00	22.56	22.31	21.25	20.08	21.94
1991-1992	20.13	19.40	18.72	18.08	17.97	18.75	19.20	19.00	18.75	18.55	18.69	19.91	18.93
1992-1993	24.00	23.44	23.13	23.13	21.88	19.38	18.10	18.25	18.69	19.25	21.06	24.63	21.25
SMALL RED - Southern Idaho													
1988-1989	29.75	31.21	31.38	31.33	31.50	35.13	N.Q.	N.Q.	37.83	37.69	37.38	37.44	34.06
1989-1990	29.75	29.38	29.50	28.75	34.40	36.00	35.63	35.88	35.94	36.13	35.80	34.50	33.45
1990-1991	28.67	28.60	30.67	30.50	30.80	31.67	32.38	32.15	32.44	32.88	32.00	N.Q.	31.16
1991-1992	25.58	25.00	21.88	21.92	21.38	24.25	24.85	26.50	28.92	28.95	29.28	28.88	25.62
1992-1993	29.83	30.75	31.13	30.50	30.50	30.06	29.15	28.38	27.88	29.94	30.67	31.50	30.02
PINK - Southern Idaho													
1988-1989	31.00	31.69	31.80	31.58	31.65	N.Q.	38.00	38.50	38.25	37.63	37.63	37.56	35.03
1989-1990	30.33	32.60	34.50	34.00	37.05	37.31	36.63	36.50	36.25	36.63	35.75	34.33	35.16
1990-1991	26.50	24.30	24.42	24.33	22.95	22.81	22.75	22.69	22.25	22.38	21.75	20.75	23.16
1991-1992	20.56	20.90	20.56	20.33	19.56	20.06	20.15	20.50	20.63	20.63	21.00	21.75	20.55
1992-1993	N.E.	28.58	29.56	29.50	29.25	28.25	27.65	26.38	25.38	24.85	24.50	25.40	27.21

NQ - No Quote

NE - Not Established

Monthly Average Prices Per Cwt. by Crop Year fob Bid to Growers

Year	Sep	Oct	Nov	Dec	Jan	Feb	Mar	Apr	May	June	Jul	Aug	Avg
PINTO - Northern Colorado													
1988-1989	29.75	29.88	29.00	29.00	29.00	31.50	34.00	N.O.	35.30	36.00	36.00	33.75	32.11
1989-1990	24.88	26.20	27.75	28.13	33.30	35.63	36.75	37.00	38.20	40.00	38.80	29.00	32.97
1990-1991	15.75	15.00	15.00	14.67	14.10	15.75	15.88	16.10	17.63	17.75	16.40	14.38	15.70
1991-1992	13.69	13.10	12.56	12.25	11.50	13.25	13.50	13.75	14.00	14.30	15.06	15.88	13.57
1992-1993	18.30	19.00	20.00	20.00	20.00	19.88	18.60	17.75	17.00	17.00	17.00	19.50	18.67
PINTO - North Dakota/Minnesota													
1988-1989	29.75	30.00	28.25	28.00	28.00	30.50	33.63	N.O.	34.00	34.00	34.00	34.00	31.29
1989-1990	24.50	26.60	27.75	28.00	32.30	34.63	35.00	35.00	36.00	40.00	40.00	N.E.	32.71
1990-1991	14.75	14.20	15.00	14.83	14.10	14.38	14.75	15.10	16.75	16.88	15.30	12.69	14.89
1991-1992	11.13	11.35	11.06	10.42	10.19	11.38	12.00	12.00	12.00	12.30	13.13	14.44	11.78
1992-1993	16.70	17.13	18.88	21.02	19.25	18.00	16.80	15.47	14.00	13.60	13.50	13.75	16.51
GREAT NORTHERN - Western Nebraska - Eastern Wyoming													
1988-1989	25.00	N.O.	24.00	24.00	24.60	25.75	26.00	N.O.	24.00	N.O.	22.00	22.00	24.15
1989-1990	22.50	22.00	22.00	22.00	24.20	25.00	25.00	25.00	25.00	25.00	23.20	N.O.	23.72
1990-1991	16.00	14.70	15.00	15.83	15.60	16.31	16.88	16.20	17.63	17.50	16.20	14.50	16.03
1991-1992	14.88	13.95	13.38	13.08	12.50	13.38	13.90	13.94	14.00	14.00	14.00	14.00	13.75
1992-1993	19.40	18.00	18.00	18.00	17.50	15.75	13.70	13.50	13.50	13.65	14.44	15.80	15.94
SMALL RED - Southern Idaho													
1988-1989	24.75	24.88	24.50	24.00	24.00	27.13	30.00	30.75	30.20	30.25	30.00	30.00	27.54
1989-1990	24.13	24.10	24.00	24.00	26.20	28.00	28.00	28.00	28.00	28.00	28.00	N.O.	26.40
1990-1991	20.38	20.40	22.00	22.67	23.00	23.00	23.00	23.20	23.38	25.00	24.60	22.25	22.74
1991-1992	19.00	18.50	15.00	15.00	15.00	15.50	16.40	18.00	19.25	20.00	20.25	21.00	17.74
1992-1993	22.20	23.00	23.00	23.00	23.00	22.75	22.00	22.00	22.00	22.00	22.25	23.00	22.48
PINK - Southern Idaho													
1988-1989	25.63	26.00	26.00	26.00	26.00	27.50	30.25	31.00	31.00	31.50	31.50	31.00	28.62
1989-1990	24.50	25.70	27.88	27.75	29.60	30.00	30.75	31.00	31.00	31.00	30.90	N.O.	29.10
1990-1991	19.50	17.60	17.75	18.00	17.20	17.50	17.50	17.00	17.13	17.50	16.60	15.67	17.41
1991-1992	15.25	15.40	15.00	14.33	13.25	13.63	14.00	15.00	15.63	16.00	16.00	16.25	14.98
1992-1993	19.50	22.50	23.00	21.75	23.00	21.50	20.70	19.75	18.50	17.80	16.75	18.30	20.25

NO - No Quote

NE - Not Established

Monthly Average Prices Per Cwt. by Crop Year fob Dealer

Year	Sep	Oct	Nov	Dec	Jan	Feb	Mar	Apr	May	June	Jul	Aug	Avg
BLACK TURTLE SOUP - Michigan													
1988-1989	N.A.	N.A.	N.A.	N.A.	N.A.	N.A.	N.A.	N.A.	N.A.	N.A.	N.A.	N.A.	N.A.
1989-1990	N.A.	N.A.	N.A.	N.A.	N.A.	N.A.	N.A.	40.00	40.75	40.75	N.A.	N.A.	40.50
1990-1991	22.67	22.00	24.38	23.50	21.75	21.94	21.50	24.80	27.31	26.88	25.50	N.A.	23.84
1991-1992	20.08	19.28	19.16	19.00	18.56	21.00	21.20	20.53	N.A.	19.81	19.81	20.41	19.89
1992-1993	22.55	23.81	25.06	24.75	25.25	24.88	24.00	22.75	22.44	23.44	24.50	27.66	24.26
BLACK TURTLE SOUP - New York													
1988-1989	N.A.	N.A.	N.A.	N.A.	N.A.	N.A.	N.A.	N.A.	N.A.	N.A.	N.A.	N.A.	N.A.
1989-1990	N.A.	N.A.	N.A.	N.A.	N.A.	N.A.	N.A.	N.A.	N.A.	N.A.	N.A.	N.A.	N.A.
1990-1991	N.A.	21.55	22.50	22.50	21.17	21.50	22.00	22.67	N.A.	N.A.	N.A.	N.A.	21.98
1991-1992	N.A.	N.A.	20.50	N.A.	N.A.	N.A.	20.50	N.A.	21.25	21.19	N.A.	N.A.	20.86
1992-1993	22.63	24.00	26.00	25.50	25.50	25.67	24.67	24.00	24.00	N.A.	24.25	26.67	N.A.
CRANBERRY - Michigan													
1988-1990	N.A.	N.A.	N.A.	N.A.	N.A.	N.A.	N.A.	N.A.	N.A.	N.A.	N.A.	N.A.	N.A.
1989-1990	N.A.	N.A.	N.A.	N.A.	43.88	N.A.	44.25	44.00	43.50	N.A.	N.A.	N.A.	43.91
1990-1991	37.00	28.38	32.63	35.08	35.83	35.50	35.83	36.15	35.69	N.A.	N.A.	N.A.	34.12
1991-1992	25.31	24.55	28.69	29.42	31.75	32.25	31.13	N.A.	N.A.	N.A.	N.A.	N.A.	29.01
1992-1993	37.50	41.08	50.41	57.25	51.50	N.A.	N.A.	31.75	32.50	N.A.	32.67	29.75	39.93
LIGHT RED KIDNEY - Michigan													
1988-1989	N.A.	N.A.	N.A.	N.A.	N.A.	N.A.	N.A.	N.A.	N.A.	N.A.	N.A.	N.A.	N.A.
1989-1990	N.A.	N.A.	N.A.	N.A.	N.A.	N.A.	N.A.	N.A.	N.A.	N.A.	N.A.	N.A.	N.A.
1990-1991	26.58	23.00	23.38	N.A.	23.56	23.67	23.38	23.65	23.33	23.44	23.75	N.A.	23.77
1991-1992	30.63	30.90	31.38	31.17	30.75	30.13	30.00	29.50	N.A.	N.A.	24.50	N.A.	29.88
1992-1993	30.94	37.13	37.81	37.88	37.17	37.38	36.13	35.17	33.75	32.25	31.25	30.94	34.82
LIGHT RED KIDNEY - New York													
1989-1990	N.A.	N.A.	N.A.	N.A.	40.83	39.75	39.25	39.17	39.25	40.00	N.A.	N.A.	39.71
1990-1991	25.50	21.70	22.31	22.00	21.81	21.75	22.00	21.88	22.13	21.83	N.A.	N.A.	22.29
1991-1992	30.50	30.50	30.63	30.42	29.75	29.17	28.53	28.50	N.A.	25.88	24.83	N.A.	28.87
1992-1993	29.00	36.83	37.88	38.06	36.88	36.67	N.A.	N.A.	33.50	N.A.	31.33	30.00	34.46

NO - No Quote

NA - Not Available

NE - Not Established

Monthly Average Prices Per Cwt. by Crop Year fob Bid to Growers

Year	Sep	Oct	Nov	Dec	Jan	Feb	Mar	Apr	May	June	Jul	Aug	Avg
BLACK TURTLE SOUP - Michigan													
1988-1989	N.A.	N.A.	N.A.	N.A.	N.A.	N.A.	N.A.	N.A.	N.A.	N.A.	N.A.	N.A.	N.A.
1989-1990	N.A.	N.A.	N.A.	N.A.	32.00	32.00	N.A.	N.A.	N.A.	N.A.	N.A.	N.A.	32.00
1990-1991	17.00	15.40	17.88	17.83	16.00	16.25	N.E.	20.00	B.I.	B.I.	B.I.	B.I.	17.19
1991-1992	15.00	14.50	14.31	14.08	13.81	15.19	15.50	16.00	B.I.	B.I.	B.I.	B.I.	14.80
1992-1993	17.55	20.00	20.13	20.25	20.50	20.50	19.90	19.50	18.56	18.35	18.50	18.50	19.35
BLACK TURTLE SOUP - New York													
1988-1989	N.A.	N.A.	N.A.	N.A.	N.A.	N.A.	N.A.	N.A.	N.A.	N.A.	N.A.	N.A.	N.A.
1989-1990	N.A.	N.A.	N.A.	N.A.	32.00	32.00	N.A.	N.A.	N.A.	N.A.	N.A.	N.A.	32.00
1990-1991	N.A.	15.00	16.00	16.00	15.00	16.00	15.88	17.50	19.00	18.00	B.I.	B.I.	16.49
1991-1992	15.00	15.00	15.00	15.00	14.88	14.88	15.30	16.00	15.75	15.70	16.00	16.25	15.40
1992-1993	17.56	17.75	18.00	18.00	18.00	18.00	18.00	18.00	18.00	18.00	18.75	19.13	18.10
CRANBERRY - Michigan													
1988-1989	N.A.	N.A.	N.A.	N.A.	N.A.	N.A.	N.A.	N.A.	N.A.	N.A.	N.A.	N.A.	N.A.
1989-1990	N.A.	N.A.	N.A.	N.A.	32.00	N.A.	N.A.	N.A.	N.A.	N.A.	N.A.	N.A.	32.00
1990-1991	25.67	20.38	24.50	25.83	N.A.	N.A.	N.A.	N.A.	N.A.	N.A.	N.A.	N.A.	24.10
1991-1992	20.38	19.00	19.75	N.A.	N.A.	N.A.	N.A.	N.A.	N.A.	N.A.	N.A.	N.A.	19.71
1992-1993	28.67	N.A.	N.A.	N.A.	N.A.	N.A.	N.A.	N.A.	N.A.	N.A.	N.A.	N.A.	28.67
LIGHT RED KIDNEY - Michigan													
1988-1989	N.A.	N.A.	N.A.	N.A.	N.A.	N.A.	N.A.	N.A.	N.A.	N.A.	N.A.	N.A.	N.A.
1989-1990	N.A.	N.A.	N.A.	N.A.	31.75	32.00	N.A.	N.A.	N.A.	N.A.	N.A.	N.A.	31.88
1990-1991	21.25	16.80	17.13	17.50	17.25	17.50	17.13	17.20	17.00	16.88	B.I.	B.I.	17.56
1991-1992	24.50	24.90	25.00	25.00	25.00	25.00	25.00	24.88	24.50	B.I.	B.I.	B.I.	24.86
1992-1993	27.38	30.13	30.00	31.00	31.00	31.00	30.00	27.25	27.00	27.00	N.A.	N.A.	29.18
LIGHT RED KIDNEY - New York													
1988-1989	N.A.	N.A.	N.A.	N.A.	N.A.	N.A.	N.A.	N.A.	N.A.	N.A.	N.A.	N.A.	N.A.
1989-1990	N.A.	N.A.	N.A.	N.A.	32.00	32.00	32.00	32.00	32.00	B.I.	B.I.	B.I.	32.00
1990-1991	17.50	15.00	15.00	15.00	15.00	15.38	15.13	15.40	15.38	15.00	15.00	B.I.	15.34
1991-1992	24.83	25.00	25.00	23.00	21.00	21.00	21.00	18.75	18.50	18.10	18.00	18.50	21.06
1992-1993	22.20	26.25	28.50	29.00	29.00	29.00	29.00	29.00	29.00	28.20	28.00	N.A.	22.20

NO - No Quote NF - Not Established NA - Not Available BI - Bought In

Monthly Average Prices Per Cwt. by Crop Year fob Dealer

Year	Sep	Oct	Nov	Dec	Jan	Feb	Mar	Apr	May	June	Jul	Aug	Avg
LIGHT RED KIDNEY - California													
1988-1989	34.88	40.67	47.05	48.50	48.31	48.44	49.18	50.00	52.16	59.25	63.62	63.00	50.12
1989-1990	42.50	43.85	46.56	46.16	44.12	44.00	44.00	44.00	42.90	41.88	40.50	35.00	42.95
1990-1991	30.12	27.10	26.25	25.75	25.68	26.00	26.50	26.50	26.50	26.50	27.95	29.25	27.01
1991-1992	29.44	31.40	31.50	31.92	32.88	32.67	32.00	31.88	30.75	29.10	29.31	30.13	31.08
1992-1993	31.38	36.94	36.38	37.00	36.56	35.63	34.79	33.63	32.81	32.55	31.88	31.88	34.29
BABY LIMA - California													
1988-1989	42.32	42.00	39.70	38.25	38.75	45.88	46.81	46.16	N.Q.	34.54	33.75	33.60	40.16
1989-1990	33.75	35.40	34.62	34.16	33.44	33.50	33.50	32.88	33.25	33.44	33.50	33.18	33.67
1990-1991	34.06	35.15	33.81	33.75	33.75	38.62	43.50	41.50	41.12	40.00	39.15	36.88	37.61
1991-1992	33.75	N.Q.	21.58	21.25	20.56	20.44	20.50	20.50	20.44	20.30	20.50	20.31	21.83
1992-1993	20.78	20.75	22.88	23.75	23.44	23.00	22.44	21.50	20.94	21.05	25.00	26.88	22.70
LARGE LIMA - California													
1988-1989	47.60	49.00	47.80	46.58	45.12	44.88	45.56	45.62	44.95	44.44	44.31	43.90	45.81
1989-1990	43.25	43.45	43.31	43.08	42.88	43.25	43.25	42.88	42.65	43.00	42.85	42.87	43.06
1990-1991	43.62	44.30	44.06	44.25	45.62	47.12	47.94	47.80	47.37	47.06	46.65	45.94	45.98
1991-1992	45.25	44.35	43.50	43.33	42.81	41.69	37.75	39.13	37.00	33.35	30.69	28.34	38.93
1992-1993	26.25	26.13	26.25	26.33	26.38	35.63	25.22	25.50	25.31	25.75	29.56	31.50	26.65
BLACKEYE - California													
1988-1989	31.00	31.38	29.95	28.50	28.25	27.25	28.12	28.31	27.35	26.50	26.38	26.45	28.28
1989-1990	27.06	29.35	29.62	29.33	29.62	30.68	31.75	33.12	33.90	33.68	32.90	32.75	31.14
1990-1991	33.12	32.35	32.00	32.00	31.88	32.06	32.25	31.80	31.31	31.75	30.63	30.19	31.73
1991-1992	29.63	29.15	27.19	26.00	23.88	22.50	21.75	21.00	20.38	22.70	19.56	20.38	23.68
1992-1993	21.20	22.63	26.69	26.67	26.50	26.25	26.28	26.19	26.19	26.00	26.75	28.19	25.80
PINK - California													
1988-1989	31.00	32.00	32.00	32.00	32.00	34.75	40.50	N.Q.	N.Q.	N.Q.	N.Q.	N.Q.	33.39
1989-1990	35.00	31.50	33.66	33.50	N.Q.	40.00	39.87	35.16	36.90	N.Q.	N.Q.	N.Q.	35.69
1990-1991	N.Q.	25.75	25.50	25.50	25.00	24.50	24.50	23.00	N.Q.	N.Q.	N.Q.	N.Q.	24.87
1991-1992	N.Q.	N.Q.	N.Q.	N.Q.	N.Q.	N.Q.	N.Q.	N.Q.	N.Q.	N.Q.	20.83	N.Q.	20.83
1992-1993	N.A.	N.A.	N.A.	N.A.	N.A.	N.A.	N.A.	26.75	26.25	25.63	25.21	N.A.	25.84

NC - Not Established

NA - Not Available

NQ - No Quote

Monthly Average Prices Per Cwt. by Crop Year fob Dealer

Year	Sep	Oct	Nov	Dec	Jan	Feb	Mar	Apr	May	June	Jul	Aug	Avg
GARBANZO - California													
1988-1989	24.50	24.50	24.55	26.25	24.81	25.31	27.31	29.88	32.30	33.81	34.38	34.00	28.46
1989-1990	34.75	38.20	39.87	41.00	43.00	43.00	35.50	32.00	31.85	31.00	31.40	31.25	36.06
1990-1991	32.00	31.65	32.00	31.83	32.62	36.75	36.88	35.10	36.56	37.00	36.60	36.50	34.62
1991-1992	36.63	37.40	38.50	38.67	37.63	38.25	39.90	40.00	40.13	44.19	43.81	42.81	39.83
1992-1993	40.94	42.67	42.50	41.25	41.00	44.50	43.93	37.50	40.13	N.A.	N.A.	N.A.	41.60
SMALL WHITE - Idaho Washington													
1988-1989	N.E.	41.08	42.49	39.92	39.30	37.75	37.25	34.75	33.33	N.E.	28.25	27.75	36.17
1989-1990	28.63	29.10	28.75	28.25	28.92	29.58	30.19	29.92	29.75	29.38	N.E.	N.E.	29.25
1990-1991	27.17	24.69	24.50	24.50	24.33	25.13	25.92	25.88	26.44	N.O.	26.75	26.33	25.60
1991-1992	25.03	24.13	23.75	23.00	22.17	22.17	22.45	22.33	23.13	23.75	25.08	27.75	23.65
1992-1993	29.67	33.00	31.83	31.00	31.00	30.00	28.25	N.E.	N.E.	N.E.	24.50	25.38	29.40
PEA BEAN - Michigan No. 1's													
1988-1989	40.17	43.33	42.38	N.E.	N.E.	37.94	N.E.	34.00	N.E.	N.E.	33.38	37.33	37.65
1989-1990	31.17	28.45	28.56	21.44	31.78	33.81	33.44	33.06	32.80	30.58	26.13	26.63	29.82
1990-1991	19.69	18.35	20.13	20.33	19.80	21.56	22.31	22.18	22.63	20.75	19.15	18.00	20.41
1991-1992	17.25	15.93	15.53	15.33	16.72	18.31	18.30	17.94	17.53	17.70	19.08	22.88	17.71
1992-1993	25.38	25.67	25.81	24.31	23.50	21.25	18.83 20.33	19.19	15.15 18.53	18.05	18.38	19.68	21.27
PEA BEAN - North Dakota/Minnesota													
1988-1989	N.E.	N.E.	N.E.	N.E.	N.E.	N.E.	N.E.	N.E.	25.75	N.E.	24.50	N.E.	25.13
1989-1990	N.E.	N.E.	N.E.	N.E.	N.E.	N.E.	N.E.	28.75	N.E.	N.E.	N.E.	N.E.	28.75
1990-1991	18.50	16.75	18.88	18.88	18.58	19.88	20.38	N.E.	21.25	N.E.	N.E.	16.75	18.87
1991-1992	15.50	15.10	14.97	N.E.	N.E.	16.75	16.75	16.06	15.83	16.56	N.E.	N.E.	15.94
1992-1993	23.00	23.75	24.17	23.50	21.50	19.50	20.30	17.50	16.81	16.96	17.00	19.25	20.27

NO - No Quote NE - Established

Monthly Average Prices Per cwt. by Crop Year fob Dealer

Year	Sep	Oct	Nov	Dec	Jan	Feb	Mar	Apr	May	June	Jul	Aug	Avg
AUSTRIAN WINTER PEAS - Idaho/Washington													
1988-1989	16.94	16.56	16.25	N.E.	16.13	15.79	15.72	15.56	15.30	N.E.	N.E.	N.E.	16.03
1989-1990	13.47	13.08	12.41	12.50	16.44	16.56	N.E.	N.E.	N.E.	N.E.	N.E.	17.75	14.60
1990-1991	18.25	18.65	19.13	20.75	22.00	21.81	N.E.	N.E.	N.E.	N.E.	25.00	25.17	21.35
1991-1992	22.60	22.06	21.08	20.33	19.84	19.44	19.25	18.50	N.E.	16.25	14.63	14.17	18.92
1992-1993	14.25	14.25	14.13	14.25	14.50	13.42	12.98	12.63	12.63	11.75	11.75	11.40	13.16
LENTILS - Idaho/Washington													
1988-1989	22.63	22.30	22.44	21.50	20.05	18.81	19.56	19.16	19.15	18.75	18.60	18.81	20.15
1989-1990	21.31	21.73	21.88	22.44	22.58	21.69	20.94	20.20	19.84	20.16	20.85	21.19	21.23
1990-1991	20.78	20.15	21.75	29.75	35.25	39.25	35.92	29.15	25.81	25.06	21.66	21.06	27.13
1991-1992	19.25	18.28	18.14	18.94	18.41	18.38	18.88	18.25	17.58	18.00	20.75	19.25	18.68
1992-1993	23.97	24.19	25.13	25.23	25.00	22.29	19.65	18.06	18.81	19.25	19.69	18.65	21.66
GREEN SPLITS - Idaho/Washington													
1988-1989	13.23	13.25	13.34	13.63	13.73	13.56	13.49	13.44	13.38	13.38	13.43	13.16	13.42
1989-1990	13.09	12.78	12.63	12.63	12.80	12.88	12.97	13.68	14.69	15.00	15.15	17.06	13.78
1990-1991	17.53	17.68	17.91	18.13	18.65	21.13	23.81	23.45	22.16	19.75	15.20	14.13	19.13
1991-1992	13.58	13.31	13.16	13.29	13.11	13.19	13.23	13.13	13.03	13.45	13.50	13.33	13.28
1992-1993	13.91	14.53	14.90	14.75	14.66	14.44	14.28	14.06	14.19	14.20	14.03	13.55	14.29
WHOLE GREEN PEAS - Idaho/Washington													
1988-1989	10.58	10.62	10.81	10.96	10.98	10.91	10.88	10.90	10.95	10.91	10.85	10.44	10.82
1989-1990	10.31	10.10	10.10	10.18	10.25	10.28	10.47	11.18	12.34	12.61	12.85	14.44	11.26
1990-1991	14.75	14.78	14.84	15.13	15.53	17.66	19.56	19.15	17.19	14.71	11.47	11.19	15.50
1991-1992	10.77	10.50	10.22	10.38	10.28	10.44	10.50	10.38	10.19	10.43	10.75	10.63	10.46
1992-1993	11.13	11.84	12.13	11.71	11.64	11.54	11.30	11.21	11.28	11.33	11.06	10.29	11.37
WHOLE YELLOW PEAS - Idaho/Washington													
1988-1989	12.63	13.00	N.E.	N.E.	15.69	N.E.	N.E.	N.E.	N.E.	N.E.	11.88	N.E.	13.30
1989-1990	12.36	10.40	12.96	N.E.	N.E.	14.38	N.E.	N.E.	N.E.	N.E.	N.E.	N.E.	12.53
1990-1991	11.46	11.28	11.19	11.50	11.53	13.13	16.00	16.25	N.E.	N.E.	N.E.	N.E.	12.79
1991-1992	N.E.	10.69	10.06	N.E.	10.00	9.88	10.00	10.00	9.25	9.17	N.E.	N.E.	9.88
1992-1993	N.E.	10.50	11.08	N.E.	10.44	10.38	10.44	N.E.	10.16	N.E.	11.50	10.75	10.66
YELLOW SPLITS - Idaho/Washington													
1988-1989	16.13	16.25	17.09	18.42	19.31	20.59	N.E.	N.E.	N.E.	N.E.	N.E.	14.88	17.52
1989-1990	15.56	16.15	16.34	16.44	17.20	18.06	18.67	18.75	N.E.	N.E.	N.E.	15.00	16.91
1990-1991	14.33	14.25	14.31	14.44	14.88	15.75	19.38	19.44	18.17	17.75	N.E.	N.E.	16.27
1991-1992	13.63	13.31	13.06	13.00	13.00	12.94	13.08	13.04	12.71	13.06	13.13	13.00	13.08
1992-1993	13.34	13.66	13.88	13.88	13.84	13.75	13.50	13.50	13.63	13.78	14.38	14.25	13.78

Monthly Average Prices Per Cwt. by Crop Year fob Bid to Grower

Year	Sep	Oct	Nov	Dec	Jan	Feb	Mar	Apr	May	June	Jul	Aug	Avg
AUSTRIAN WINTER PEAS - Idaho/Washington													
1988-1989	12.00	12.00	12.00	12.00	12.00	12.00	12.00	12.00	12.00	N.E.	N.E.	10.25	11.81
1989-1990	10.19	10.08	10.00	10.00	N.E.	N.E.	N.E.	N.E.	N.E.	N.E.	11.63	12.00	10.65
1990-1991	12.00	12.70	13.38	14.00	N.E.	N.E.	N.E.	N.E.	N.E.	N.E.	17.88	18.00	14.66
1991-1992	16.25	16.25	N.E.	N.E.	N.E.	N.E.	N.E.	N.E.	N.E.	N.E.	10.13	10.50	13.28
1992-1993	10.31	10.56	10.65	10.67	10.38	N.E.	N.E.	N.E.	N.E.	N.E.	N.E.	8.65	10.20
LENTILS - Idaho/Washington													
1988-1989	19.06	18.83	18.94	N.E.	16.95	N.E.	16.38	15.84	16.08	15.63	15.38	15.59	16.87
1989-1990	17.94	18.45	18.56	19.09	19.20	18.34	17.56	17.23	16.75	17.09	17.85	18.03	18.01
1990-1991	17.69	16.98	18.63	26.50	30.00	35.50	27.75	23.95	22.25	22.19	18.50	18.00	23.16
1991-1992	16.28	15.25	15.22	16.00	15.38	15.50	15.68	14.94	14.66	14.78	17.16	15.75	15.55
1992-1993	19.91	20.56	21.70	21.83	21.92	18.81	16.13	14.84	15.81	15.95	16.06	15.00	18.21
WHOLE GREEN PEAS - Idaho/Washington													
1988-1989	7.88	8.00	8.16	8.33	8.50	8.50	8.50	8.50	8.55	8.59	8.48	7.91	8.33
1989-1990	7.88	7.65	7.69	7.66	7.88	8.00	8.22	8.83	9.84	10.09	9.95	11.00	8.72
1990-1991	11.38	11.68	12.03	12.13	12.75	14.69	16.38	15.63	13.06	10.44	8.95	8.66	12.32
1991-1992	8.30	7.94	7.69	8.00	7.97	8.25	8.28	8.03	7.78	8.18	8.25	7.85	8.04
1992-1993	8.50	9.09	9.08	8.88	8.84	9.13	9.00	8.78	8.88	8.78	8.06	7.38	8.70
WHOLE YELLOW PEAS - Idaho/Washington													
1988-1989	9.84	10.00	10.47	11.63	12.20	13.50	14.50	N.E.	N.E.	N.E.	N.E.	9.03	11.40
1989-1990	9.41	9.88	10.13	10.25	10.59	11.78	12.25	N.E.	N.E.	N.E.	9.00	8.83	10.24
1990-1991	8.53	8.30	8.34	8.46	8.73	9.94	12.83	12.80	12.00	9.88	N.E.	N.E.	9.98
1991-1992	7.71	7.50	7.28	7.38	7.22	7.38	7.43	7.28	7.16	7.13	7.25	7.20	7.33
1992-1993	7.56	7.75	7.70	7.75	7.69	7.63	7.48	7.25	7.28	7.43	7.78	7.90	7.60

Dry Edible Beans, U.S. Production by Commercial Class (in Thousand Cwt.)

<i>Class</i>	<i>1989</i>	<i>1990</i>	<i>1991</i>	<i>1992</i>	<i>1993*</i>	<i>5 Year Average</i>
Pea Bean, (Navy)	4,457	6,593	8,268	5,018	5,263	5920
Great Northern	2,122	2,822	2,588	1,416	751	1940
Small White	375	321	353	166	141	271
Pinto	9,439	13,650	13,643	9,172	8,172	10815
Red Kidney	1,717	2,344	2,323	1,964	1,927	2055
Pink	1,235	1,195	822	609	791	930
Small Red	699	648	751	607	784	698
Cranberry	165	330	478	380	603	387
Black Turtle Soup	466	1,092	741	758	1,339	879
Large Lima (Calif.)	618	460	881	615	342	543
Baby Lima (Calif.)	728	570	975	498	335	621
Blackeye (Calif.)	797	936	984	577	624	784
Garbanzo (Calif.)	35	27	26	264	290	128
Other	876	1,391	1,132	571	480	890
Total	23,729	32,379	33,765	22,615	21,842	26,866

Source: USDA, NASS. *Subject to revision.

Canadian Crop Production

Global Economic Data Exchange System (1000 Hectares) (1000 Metric Tons)

<i>Month/Marketing Year</i>	<i>PEAS</i>			<i>LENTILS</i>		
	<i>1991-92</i>	<i>1992-93</i>	<i>1993-94</i>	<i>1991-92</i>	<i>1992-93</i>	<i>1993-94</i>
<i>Crop Year</i>	<i>(1991)</i>	<i>(1992)</i>	<i>(1993)</i>	<i>(1991)</i>	<i>(1992)</i>	<i>(1993)</i>
Area Harvested	198	262	467	238	267	328
Beginning Stocks	37	48	125	22	84	87
Production	410	508	970	343	349	349
Imports	9	8	5	4	2	2
TOTAL SUPPLY	456	564	1100	369	435	438
Exports	274	252	500	209	246	250
Total Dom Consumption	134	186	300	76	102	98
Ending Stocks	48	125	300	84	87	90

Source: Ag Canada

Dry Edible Beans, Production by Commercial Class

in Thousand Hundredweight

Small Red

ST	1989	1990	1991	1992	1993
ID	372	370	447	327	460
WA	327	278	304	280	324
US	699	648	751	607	784

Pea Bean - (Navy)

ST	1989	1990	1991	1992	1993
CO		*	30	8	12
ID		131	52	63	73
KS	60	29	14		30
MI	3045	3545	4940	2970	4060
MN	500	919	749	494	217
NR	58	87	64	13	61
NM	80	60	68	78	45
ND	714	1767	2310	1305	704
OR		55	41	40	40
WY				47	21
US	4457	6593	8268	5018	5263

Pink

ST	1989	1990	1991	1992	1993
CA	258	214		87	90
ID	895	878	697	407	544
MT	30	27	15	6	
ND					24
NM	10	7	18	24	15
WA	42	69	92	85	118
US	1235	1195	822	609	791

Black Turtle Soup

ST	1989	1990	1991	1992	1993
CO					45
ID					32
MI	370	920	642	570	1040
NR					31
NY	96	172	99	90	120
WA				28	33
US	466	1092	741	758	1339

Small White

ST	1989	1990	1991	1992	1993
CO		*			
ID	110	92	118	71	46
MI	120	130	115	24	30
OR		22	26	29	34
WA	145	77	94	42	31
US	375	321	353	166	141

Baby Lima

ST	1989	1990	1991	1992	1993
CA	728	570	975	498	335
US	728	570	975	498	335

Cranberry

ST	1989	1990	1991	1992	1993
MI	165	330	478	380	575
MN					28
US	169	330	478	380	603

Blackeye

ST	1989	1990	1991	1992	1993
CA	797	906	923	510	550
TX		30	61	67	74
US	797	936	984	577	624

Great Northern

ST	1989	1990	1991	1992	1993
CO			42	27	2
ID	234	180	183	75	52
KS	7	36	15		
NR	1749	2425	2201	1270	690
WA	34	56	43		
WY	98	125	104	44	7
US	2122	2822	2588	1416	751

Large Lima

ST	1989	1990	1991	1992	1993
CA	618	460	681	615	342
US	618	460	681	615	342

* For 1990 the Navy, Great Northern, Small White and Red Kidney Totals in Colorado are grouped together in the "Other" category.

Dry Edible Beans, Production by Commercial Class
in Thousand Hundredweight

<u>All Red Kidney*</u>					<u>Light Red Kidney</u>				<u>Dark Red Kidneys</u>			
ST	1990	1991	1992	1993	ST	1991	1992	1993	ST	1991	1992	1993
CA	754	397	469	545	CA	221	346	405	CA	170	123	140
CO	*	60	153	102	CO	61	153	102	ID	14	12	15
ID	31	47	23	30	ID	14	11	15	MI	182	100	105
MI	310	408	240	220	MI	138	140	115	MN	582	386	283
MN	407	681	505	356	MN	99	119	73	ND			45
NB	230	191	175	173	NB	191	175	173	NY	66	28	60
NY	427	332	194	290	NY	266	155	230	WI	207	158	145
WA				21	WA			21	US	1240	865	793
WI	185	207	158	145	US	990	1099	1134				
US	2344	2323	1917	1927								

Prior to 1991 Light Red Kidney and Dark Red Kidney were combined.

<u>Pinto</u>						<u>Other</u>						<u>Total</u>					
ST	1989	1990	1991	1992	1993	ST	1989	1990	1991	1992	1993	ST	1989	1990	1991	1992	1993
CA	2838	3813	3173	2370	2662	CA	208	154	259	77	121	CA	3357	3058	3235	2445	2194
ID	1722	1830	1322	576	826	CO	270	462*	25	50	8	CO	3108	4275	3330	2608	2831
KS	256	590	504	325	330	ID	94	49	66	27	11	ID	3444	3560	2932	1584	2091
MI	40	150	131	75	110	KS	3	10	11	12	18	KS	326	665	544	350	378
MN	163	371	445	326	196	MI	15	60	39	31	45	MI	3975	5445	6753	4290	6000
MT	100	193	143	175	155	MN	10	71	105	91	39	MN	910	1768	1980	1416	836
NB	1496	2230	1535	1008	837	NB	14	32	18	59	28	MT	130	220	158	181	155
NM	183	159	148	146	127	NM	7	5	6	6	2	NB	3494	5004	4009	2525	1820
ND	1574	2873	4846	3213	2103	NY	36	73	52	32	49	NM	280	231	240	254	189
OR		62	41	15	39	ND	172	365	392	47	50	NY	450	672	483	305	459
TX		170	258	284	204	OR		41	39	18	51	ND	2460	5005	7548	4680	2964
UI	15	13	26	40	27	TX		21	54	71	33	OR		180	147	121	174
WA	299	356	375	135	210	WA	47	49	66	33	9	TX		221	373	422	311
WY	753	840	696	484	346	WY				17	16	UT	15	13	26	40	27
US	9439	13650	13643	9172	8172	US	876	1391	1132	571	480	WA	929	912	1000	644	798
												WI		185	207	158	145
												WY	851	965	800	592	390
												US	23729	32379	33765	22615	21842

Source: USDA, NASS and Annual Crop Summary January 1994

Dry Pea and Lentil Production Data

REGULAR GREENS

Year	Acreage	Average Pounds	Production Pounds
1993	144,185	2,096	302,180,620
1992	150,122	1,467	220,198,154
1991	156,127	2,019	315,269,678
1990	113,200	1,519	171,986,353
1989	132,512	2,426	321,513,180
<i>10 Yr. Average</i>	143,833	1,850	266,162,105

LENTILS

Year	Acreage	Average Pounds	Production Pounds
1993	155,838 ^b	1,319	205,474,833
1992	132,027 ^b	1,160	153,096,575
1991	127,457	1,317	167,894,338
1990	113,818	796	90,599,128
1989	94,384	1,136	107,236,122
<i>10 Yr. Average</i>	119,138	1,089	129,707,817

SMALL SIEVE GREENS

Year	Acreage	Average Pounds	Production Pounds
1993	3,917	2,087	8,175,949
1992	5,288	1,479	7,818,433
1991	6,760	2,009	13,582,862
1990	6,609	1,691	11,178,165
1989	5,551	2,447	13,883,139
<i>10 Yr. Average</i>	8,546	1,854	15,848,302

CHICKPEAS

Year	Acreage	Average Pounds	Production Pounds
1993	6,729	827	5,618,798
1992	6,772 ^a	740	5,008,250
1991	4,440	821	3,644,685
1990	7,246	564	4,085,911
1989	3,455	992	3,427,817
<i>10 Yr. Average</i>	6,110	809	4,944,753

YELLOW PEAS

Year	Acreage	Average Pounds	Production Pounds
1993	4,894	2,594	12,695,981
1992	13,392	1,534	20,542,915
1991	26,057	1,705	44,426,378
1990	37,194	1,201	44,683,810
1989	29,905	1,885	56,369,735
<i>10 Yr. Average</i>	20,451	1,600	32,718,675

AUSTRIAN WINTER PEAS

Year	Acreage	Average Pounds	Production Pounds
1993	11,857	1,276	15,130,100
1992	7,808	1,050	8,198,174
1991	12,767	1,056	13,481,467
1990	10,257	1,163	11,928,395
1989	8,902	1,699	15,123,830
<i>10 Year Average</i>	17,135	1,342	22,986,969

Source: American Dry Pea and Lentil Association

^a/ Adjusted Acreage
^b/ Small Brown Lentils not included

Lentils

State	Area Planted (1,000 Acres)					Area Harvested (1,000 Acres)					Yield (Pounds)					Production (1,000 Cwt.)				
	1989	1990	1991	1992	1993	1989	1990	1991	1992	1993	1989	1990	1991	1992	1993	1989	1990	1991	1992	1993
Idaho	39.0	43.0	47.0	50.0	57.0	38.0	40.0	46.0	49.0	56.0	1,350	700	1,350	1,200	1,500	513	280	621	588	840
Washington	55.0	65.0	76.0	78.0	88.0	54.0	64.0	75.0	77.0	87.0	1,200	930	1,400	1,270	1,340	648	595	1,050	978	1,116
United States	94.0	108.0	123.0	128.0	145.0	92.0	104.0	121.0	126.0	143.0	1,262	841	1,381	1,243	1,403	1,161	875	1,671	1,566	2,006

Dry Edible Peas

State	Area Planted (1,000 Acres)					Area Harvested (1,000 Acres)					Yield (Pounds)					Production (1,000 Cwt.)				
	1989	1990	1991	1992	1993	1989	1990	1991	1992	1993	1989	1990	1991	1992	1993	1989	1990	1991	1992	1993
Idaho	60.0	58.0	80.0	57.0	50.0	60.0	55.0	79.0	55.0	47.0	2,330	1,400	1,900	1,700	2,000	1,398	770	1,501	935	940
Washington	115.0	108.0	110.0	102.0	99.0	114.0	104.0	108.0	100.0	98.0	2,180	1,540	2,050	1,600	2,400	2,485	1,602	2,214	1,600	2,352
United States	175.0	166.0	190.0	159.0	149.0	174.0	159.0	187.0	155.0	145.0	2,232	1,492	1,987	1,635	2,270	3,883	2,372	3,715	2,535	3,292

Austrian Winter Peas

State	Area Planted (1,000 Acres)					Area Harvested (1,000 Acres)					Yield (Pounds)					Production (1,000 Cwt.)				
	1989	1990	1991	1992	1993	1989	1990	1991	1992	1993	1989	1990	1991	1992	1993	1989	1990	1991	1992	1993
Idaho	9.7	12.0	12.0	10.0	12.0	8.7	11.0	11.0	8.0	10.0	1,700	1,100	1,200	1,100	1,500	148	121	132	88	150
Oregon	2.5	1.5	1.0	1.2	1.0	1.5	0.5	0.5	0.7	.5	1,200	1,200	1,400	1,500	1,000	18	6	7	11	5
United States	12.2	13.5	13.0	11.2	13.0	10.2	11.5	11.5	8.7	10.5	1,627	1,104	1,209	1,138	1,476	166	127	139	99	155

Wrinkled Seed Peas

Production (1,000 Cwt.)

State	1989	1990	1991	1992	1993
Idaho	655	596	639	397	577
Washington	595	326	286	140	272
United States	1,250	922	925	537	849

Source: Agricultural Statistics Board, NASS, USDA

Dried Beans, U.S. Exports by Country of Destination October 1992-September 1993

Metric Tons

Country	Navy or Pea	Great Northern	Large Lima	Baby Lima	White n.e.c.	Lt Red Kidney	Dk Red Kidney	Pinto	Black	Beans n.e.c.	Seed Beans	Small Reds	TOTAL
NORTH AMERICA:													
Bahamas				16				21		18	17		72
Bermuda										18			18
Belize						121	20			142			283
Canada	61					624	1051			3014	2896	175	7821
Cayman Is.							8						8
Costa Rica		6	6		5	21	7	48	24	35	107		259
Dominican Rep.							5	1891				729	2625
El Salvador								3069		9	18	237	3333
French W. Indies	88					1494	117			138	73		1914
Guatemala								1882	433	30	5		2150
Haiti			227					11636		15			11878
Honduras			6			18		7		19		1219	1269
Jamaica & Dep.	41		5	38			80				19		183
Leeward-Windward Is.	47					2	251			28	20		348
Mexico	614	19	85	11			189	10921	6561	750	2285	39	21474
Netherlands-Antilles							53		4		11		68
Nicaragua								119				2038	2157
Panama	4		18	54		182	264	25		266		17	830
Trinidad & Tobago				9		163	597	7	129	61			966
SOUTH AMERICA:													
Argentina				19							164		183
Brazil	304					6		199	54				563
Chile							5				193		198
Colombia										4	13	22	39
Ecuador											9		9
French Guiana						615	18			72			705
Peru			589				18			18	2	4435	5062
Uruguay											3		3
Venezuela	190	623	18		145	155	115		37	707	2	35	2027
EUROPE:													
Albania								500		110			610
Austria						38					55		93
Belgium & Luxembourg	387	406	36		36		2977		68	58	174	91	4233
Bosnia-Herzegovina								1478					1478

Dried Beans, U.S. Exports by Country of Destination October 1992-September 1993

Metric Tons

Country	Navy or Pea	Great Northern	Large Lima	Baby Lima	White n.e.c.	Lt Red Kidney	Dk Red Kidney	Pinto	Black	Beans n.e.c.	Seed Beans	Small Reds	TOTAL
Byelarus, Rep. of									1244				1244
Croatia		651											651
Czechoslovakia								38					38
Czech Republic								57		7			64
Cyprus	15	18							36	36			105
Denmark		50					35		36				121
Finland	16										50		66
France	375	2389	108			80	1491		36	152	3087	22	7740
Georgia, Republic of		120											120
Germany	413	1337			211		678	42	26	149	415	50	3321
Greece	85	130			109				407	90	38		859
Ireland	853		20										873
Italy	4612	199		37	164	37	6676	127	278	8992	1218	13	22351
Macedonia (Skopje)		200											200
Netherlands	810	938	18	314	18		1232	918	55	15747	3321	52	23423
Norway												41	41
Portugal	130	178				531	1110	10	756	1880	230	251	5076
Russian Federation	18								36	14			68
Slovenia								51		23			74
Spain	711	418	72		204	36	652	24	479	2417	623	71	5707
Sweden		73	4				8	33	30		177		325
Switzerland	6			20			170	5		95	7		303
Turkey							147				2		149
United Kingdom	68030	282	2219	331	275		11773	321	543	33	1191	60	85058
ASIA:													
Bahrain									18	110			128
China (Mainland)									17		160	13	190
Hong Kong					48	10	44		309	105		36	552
India									36				36
Indonesia									29	7			36
Israel		20						500			311		831
Japan	101	3706	299	14576	4740	35	929	100	388	105	1324	1175	27478
Jordan										38	78		116
Korea	1048	267		593			37		91	55	213		2304
Kuwait	20								72				92
Lebanon								17		38			55
Malaysia		1265			38		19		31				1351
Oman										20	7		27
Philippines		981			21								1002

Dried Beans, U.S. Exports by Country of Destination October 1992-September 1993

Metric Tons

<i>Country</i>	<i>Navy or Pea</i>	<i>Great Northern</i>	<i>Large Lima</i>	<i>Baby Lima</i>	<i>White n.e.c.</i>	<i>Lt Red Kidney</i>	<i>Dk Red Kidney</i>	<i>Pinto</i>	<i>Black</i>	<i>Beans n.e.c.</i>	<i>Seed Beans</i>	<i>Small Reds</i>	<i>TOTAL</i>
Qatar											49		49
Saudia Arabia	1460	75		14			2		179	58	151		1939
Singapore		15			630		2						647
Sri Lanka										99			99
Syria											32		32
Taiwan	61			27			13		204	37	16		358
Thailand					9			89			54		152
United Arab Emirates	19		128	126		9	238		695	40	22	41	1318
OCEANIA:													
Australia	639	854	275	184	144	82	253	359	20	383	501	962	4656
French Pacific Is.		3			46		5			90	36	83	283
Micronesia, Fed. of													
New Zealand	319	6	6	5	18	20	76	20		45	181	193	889
AFRICA:													
Angola								2336		2867			5203
Burkina								2927					2927
Egypt											5		5
Ethiopia								299					299
Fr. Indian Ocean Areas			18										18
Kenya								3778					3778
Liberia								4812					4812
Mauritius			344	144							19		507
Mozambique								3935					3935
Rwanda								4090					4090
Sierra Leone								50					50
So. Africa, Rep of	701	227		54					18		478		1478
Total	82178	15456	4501	16576	6859	4279	31365	56541	13377	39244	20062	12100	302538
Crop Year Total	81608	15125	4551	16319	6974	4052	31072	47056	13054	41807	20770	14128	296514
Sept '92 Aug '93													

Source: Bureau of Census, Compiled by USDA Bean Market News

Peas, Dried: U.S. Exports by Country of Destination - October 1992-September 1993- Metric Tons

Country	Lentils	Yellows	Green	Other n.e.c.	Austrian Winter	Blackeye	Seed	Total Season
WESTERN HEMISPHERE:								
Argentina							190	190
Bahamas				4				4
Barbados	32	54	27			82		195
Belize	139	46						185
Bermuda								
Bolivia								
Brazil			1062				13	1075
Canada	147			512			6182	6841
Chile							168	168
Colombia		122	701				35	858
Costa Rica			149	50			9	208
Dominican Republic			12	51			3	66
Ecuador								
El Salvador			17					17
French Guiana								
French W. Indies	127		4					131
Guatemala							135	135
Guyana						19		19
Haiti	99		5280	14				5393
Honduras								
Jamaica & Dep			139			5		144
Leeward-Windward	2		12			17		31
Mexico	651	1755	1349	379		14	1556	5704
Netherlands Ant.								
Nicaragua	630							630
Panama	14	38						52
Peru	7799		8807	277			811	17694
Surinam						147		147
Trinidad-Tobago			41			327		368
Uruguay							4	4
Venezuela	18	165	3106	174			22	3485
EUROPE:								
Austria			7					7
Belgium-Lux.	41							41
Croatia	2879		694					3773
Cyprus						196		196
Denmark	2						918	920

Peas, Dried: U.S. Exports by Country of Destination - October 1992-September 1993- Metric Tons

Country	Lentils	Yellows	Green	Other n.e.c.	Austrian Winter	Blackeye	Seed	Total Season
Finland							135	135
France						206	1836	2042
Germany	127			20			307	454
Greece	1573		40			351		1964
Hungary			108					108
Iceland			90					90
Ireland						5	54	59
Italy	2509		749	56		123	1370	4807
Macedonia (Skopje)	201							201
Malta & Gozo							5	5
Netherlands	110			8	20	18	23	179
Norway		41	216				97	354
Portugal			55	160		2021	88	2324
Russian Federation	220		1223					1443
Spain	16617		460	243		320	457	18097
Sweden	98			10		18	1503	1629
Switzerland	22						19	41
Turkey	46		122				58	226
United Kingdom		1863	1871	24		1276	3001	8035
USSR								
Yugoslavia								
ASIA:								
Bahrain	27					44		71
Bangladesh								
China (Mainland)							39	39
Egypt								
Gaza								
Hong Kong	5	97	74	74		745	104	1099
India	1724	848	14741					17113
Iraq	1953		309					2262
Israel			81			90	127	298
Japan	117	108	977	824	364	480	620	3490
Jordan							36	36
Korea			268			35	35	338
Kuwait	4					24		28
Lebanon								
Malaysia			148			18	4	170
Oman								
Pakistan	41		122				40	203
Philippines		126	17719					17845

Peas, Dried: U.S. Exports by Country of Destination - October 1992-September 1993- Metric Tons

Country	Lentils	Yellows	Green	Other n.e.c.	Austrian Winter	Blackeye	Seed	Total Season
Qatar								
Saudi Arabia	67			133		142	20	362
Singapore							2	2
Syria							18	18
Taiwan		1570	1242	4	1698	106	137	4757
Thailand			38					38
Turkey								
United Arab Em.	40			5		162		207
Yemen(Sanaa)								
OCEANIA:								
Australia	60					137	875	1072
Fr. Pacific Is.	427		5	14				446
New Zealand			6	52			387	445
AFRICA:								
Algeria								
Angola	67							67
Botswana								
Ethiopia	1824							1824
Ghana						18		18
Guinea								
Kenya	4175						10	4185
Lesotho								
Liberia								
Morocco								
Mozambique								
Senegal								
Sierra Leone								
Somalia	6686							6686
So. Africa, Rep. of	170					73	51	294
Sudan	9015							9015
Swaziland								
Western Africa, NEC	446							446
Zimbabwe							37	37
Total	60951	6633	62271	3088	2082	7219	21541	163785
Crop Year Sep '92-Aug '93	59493	5591	63697	4117	1570	6865	2170	163033

Source: Bureau of Census, Compiled by USDA Bean Market News

U.S. Exports, Dry Beans (Yearly Totals in CWT.)

<i>Beans</i>	<i>Oct 1988- Sep 1989</i>	<i>Oct 1989- Sep 1990</i>	<i>Oct 1990- Sep 1991</i>	<i>Oct 1991- Sep 1992</i>	<i>Oct 1992- Sep 1993</i>
Beans n.e.c.	1,228,425	1,447,011	1,389,714	1,505,896	865,173
Black	91,162	312,216	510,563	238,868	294,909
Great Northern	1,694,742	1,300,317	1,227,169	612,989	340,743
Lima Beans	561,952	480,008	471,167	517,508	464,664
Navy or Pea	1,667,934	1,937,226	2,668,227	2,039,387	1,811,696
Pinto	1,406,182	2,475,942	4,138,056	2,176,822	1,248,503
Red Kidney	527,384	558,138	482,543	966,761	785,808
Seed Beans	284,838	338,649	355,558	453,057	442,287
Small Red	*	*	*	*	266,757
White n.e.c.	81,482	49,273	124,913	99,119	151,214
Total	7,524,101	8,898,780	11,367,910	8,610,417	6,669,753

*Included with Beans nec prior to 1992-93

U.S. Exports, Dry Ripe Peas (Yearly Totals in CWT.)

<i>Peas</i>	<i>Oct 1988- Sep 1989</i>	<i>Oct 1989- Sep 1990</i>	<i>Oct 1990- Sep 1991</i>	<i>Oct 1991- Sep 1992</i>	<i>Oct 1992- Sep 1993</i>
Austrian Winter	82,210	100,001	26,654	23,479	45,900
Blackeye	91,689	79,277	149,759	88,581	159,150
Green	2,147,743	2,333,106	1,245,136	1,531,447	1,372,826
Lentils	1,078,270	1,404,639	919,450	792,730	1,343,725
Other n.e.c.	139,220	125,375	159,216	146,981	68,078
Seed All Types	480,343	627,231	499,761	494,734	474,893
Yellow	194,931	413,032	113,801	129,454	146,231
Total	4,194,406	5,082,661	3,113,777	3,207,406	3,610,803

Source: Bureau of the Census

**USDA Purchases of Canned Dry Beans for Use
In Various Domestic Feeding Programs (1,000 pounds)**

Class	Oct '88 Nov '89*	Nov '89 Sep '90	Oct '90 Sep '91	Oct '91 Sep '92	Oct '92 Sep '93
Baby Lima	375				1,108
Blackeye	1,049	1,536			1,182
Dry Edible Beans, Misc		3,920			259**
Great Northern	758	300			1,071
Light Red Kidney	2,758	1,986			2,216
Pink	1,040				2,696
Pintos	9,724	6,518		4,395	5,984
Refried Beans	4,079	4,666	3,748	6,909	15,888
Small Red	1,573	1,199			1,847
Small White	40				
Vegetarian Bean	11,276	28,980	47,829	19,736	22,367
Total	32,672	49,105	51,577	31,130	44,168

*Normal Fall Purchase delayed due to budget constraints.

**Garbanzo

**USDA Purchases of Dry Edible Beans, Peas & Lentils
for Use In Various Domestic Feeding Programs (1,000 pounds)**

Class	Oct '88 Nov '89*	Nov '89 Sep '90	Oct '90 Sep '91	Oct '91 Sep '92	Oct '92 Sep '93
Baby Lima	400	280	280	885	242
Blackeye	320	360	480	1,407	202
Great Northern	1,360	2,841	560	2,332	4,636
Green Pea	1,445			2,400	
Green Split Pea	1,440	160		120	40
Lentil	3,400	160		142	81
Pea Bean	160				40
Pink	1,600	4,601			
Pinto	4,880	440	4,760	10,420	9,144
Red Kidney	640		380	281	1,732
Small Red	40	1,680	40		242
Small White				40	
Vegetarian Bean	10,573	26,040			
Total	26,258	36,562	6,500	18,027	16,359

Source: Fruit and Vegetable Division, USDA

U.S. Exports Shelled Beans Other Than Canned Dried (Metric Tons)

COUNTRY	1990	1991	1992	1993	COUNTRY	1990	1991	1992	1993
Australia	58	127	114	319	Kenya				4
Bahamas			18		Korea, Rep of	175	217	386	88
Bahrain				9	Kuwait		5	86	5
Barbados				18	Leeward-Windward Islands		1		
Belgium-Luxembourg		87			Marshall Islands				17
Bermuda			4		Mexico	1479	784	182	460
Bolivia	2	41			Netherlands Antilles	62	85	68	48
Brazil				2	Netherlands		77	33	42
Canada	75	175	936	1022	Nicaragua				9
Cayman Islands			6	11	Norway				12
Colombia			339		Oman			16	
Costa Rica			26		Panama		21	36	195
Cyprus				6	Philippines	3	10	2	
Czechoslovakia			67		Portugal		442		
Finland		7	3	17	Saudia Arabia		624	425	34
French Pacific Islands			23	56	Singapore	34	13	89	15
French West Indies				16	Spain	6	14	17	21
France	5	52	56	42	Sweden	97	4	13	1
Germany	3	364	6	400	Taiwan		17	3	62
Guatemala				4	Trinidad & Tobago		20		
Hong Kong	77	182	135	101	United Arab Emirates		6	40	52
Indonesia				6	United Kingdom	20	128	42	28
Italy	8	10	6	15	Venezuela		5	21	40
Japan	35	152	17	9	TOTAL	2230	3679	2747	3187

U.S. Exports of Beans Other Than Shelled (Metric Tons)

COUNTRY	1990	1991	1992	1993	COUNTRY	1990	1991	1992	1993
Angola	68	85	31		Kuwait	59	92	191	49
Argentina	43	20			Lebanon	26	42		17
Australia	44	69	471	284	Leeward-Windward Is.	387	215	140	
Bahamas	48	1	5		Marshall Islands	18		28	
Barbados		15		8	Mauritius			31	
Belgium-Luxembourg	44		488		Mexico	211	196	598	756
Belize		3			Nepal	52			
Canada	652	893	598	772	Netherlands	57	18	245	61
Cameroon	60	116			Netherlands Antilles	59	116	94	44
Cayman Islands			5		New Zealand		17	52	39
Chile	56	37	11		Oman	70	164		132
China (Mainland)		21			Panama	747	693	534	418
Costa Rica	4		31		Peru			116	
Denmark		352			Philippines	5	58	25	229
Dominican Republic	11	7	8	75	Poland				11
Ecuador				91	Qatar				12

El Salvador				7	Russian Federation				339
Finland		13			Saudia Arabia	489	1689	957	590
France	154	110			Singapore	35	27	16	10
French Pacific Islands	609	330	103	251	South Africa, Rep. of	71		77	79
Germany		4942	841	81	Spain			35	
Greece			53		Sweden		112		
Haiti		36			Taiwan	50		7	15
Hong Kong	94	7	29	61	Turks & Caicos Is.				2
Iceland			3		United Arab Emirates	208	266		75
Ireland				128	United Kingdom	46	154	37	7
Israel	75	269	116		Venezuela	2	3	20	61
Italy			555		Yemen		18		
Japan	109	146			TOTAL	5127	11367	6405	4779
Korea, Rep of	39	35	8	74					

U.S. Exports of Shelled Canned Dry Beans (In Cases of 24/303)*

COUNTRY	1990	1991	1992	1993	COUNTRY	1990	1991	1992	1993
Angola			5.0		Kuwait	16.3	32.0	85.3	147.7
Argentina				6.3	Lebanon			5.7	1.3
Australia			4.3	1.0	Leeward-Windward Is.				84.3
Bahamas	2.3	1.3	1.7	31.3	Malaysia				6.3
Bahrain	2.7	23.3	11.7	19.0	Mexico	290.7	158.0	61.0	90.3
Belgium-Lux		1.3	33.3	1.0	Netherlands	15.0	13.3	27.3	17.7
Brunei				1.0	Netherlands/Antilles	6.0	16.7	14.0	25.3
Canada	903.0	1,294.3	1,853.3	1,808.8	New Zealand				6.3
Colombia				2.7	Norway	11.3	20.3	22.0	32.3
Costa Rica			6.3	3.3	Oman			34.3	21.3
Czechoslovakia			1.7		Panama	13.7	32.3	112.0	36.3
Denmark	6.0	30.0	13.3	28.0	Philippines	40.3	6.7	11.3	1.7
Egypt			7.3		Qatar	10.0	12.3	24.7	
Finland			6.7	14.0	Russian Federation			4.7	5.7
France	58.0	71.7	49.0	83.3	Saudia Arabia	247.0	460.3	470.3	274.0
French Guiana		33.3	5.3		Singapore	44.0	74.6	52.7	62.7
French Pacific Islands	2.7	1.3		26.0	Sweden	78.0	89.3	58.0	68.7
Germany	1.3	33.3	10.3	14.7	Switzerland	7.3	10.7		
Greece	15.7	61.0	42.0	55.0	Taiwan	0.7	55.0	21.3	
Guatemala				36.3	Trinidad Tobago				13.7
Hong Kong	35.0	41.0	77.7	134.7	United Arab Emirates	91.7	191.6	159.3	319.0
Indonesia				31.3	United Kingdom	25.3	15.7	238.0	16.0
Israel			1.0		Venezuela	1.3	5.0		4.7
Japan	70.7	83.0	98.7	192.0					
Jordan				24.3					
Korea, Rep of	9.0		20.3	10.0	Total World	2,093.3	2,867.7	3,651.7	3,758.3

*24 lbs. net weight canned beans per case is equivalent to about 8 lbs. dry beans per case. For continuity of export data, figures shown are dry bean equivalent in metric ton.
Source: USDA, Foreign Agricultural Service and Bureau of Census

World Pulse Production (1,000 Metric Tons)

Country	1979-1981	1990	1991	1992	1993	Country	1979-1981	1990	1991	1992	1993
World	40718	57866	56122	54299	56283						
Africa						Europe					
Burkina Faso	5143	6652	7285	6810	7105		2556	7762	7157	7038	7254
Burundi	43	43F	120	120F	120F	Bulgaria	68	81	73	65	66F
Egypt	324	183	377	386	390F	Czechoslovakia	137	254	308	351	
Ethiopia	288	580	514	455	489	Czech Rep**			191	199	199
Kenya	962	711	824	815F	815F	Slovakia**			117	152	128
Morocco	185	235*	189	215	240F	France	340	3718	3257	3433	3566
Niger	229	345	437	163	164F	Greece	94	47	53	51	51F
Nigeria	292	413	441	508F	508F	Hungary	127	318	384	265	312F
Rwanda	647	1463	1559	1600F	1650F	Italy	321	199	255	241	241F
South Africa	221	238F	226F	218F	208F	Poland	216	609	630	598	639
Sudan	110	149	139	53	70	Portugal	76	68	63	62F	62F
Tanzania	99	100	110	113F	113F	Spain	365	250	215	186	191
Tunisia	315	406F	424F	312F	407F	UK	240	749	740	711	737
Uganda	89	57	98	102	104	Yugoslavia	204	159	228	168	119F
Zaire	252	502	492	512	556						
	155	191F	193	195F	196F	Oceania					
							258	1420	1910	1795	1769
North and Central America						Australia	192	1351	1835	1707	1680
Canada	3369	4366	4924	3743	473	New Zealand	63	63	70	82	85F
Dominica Rep	194	594	883	918	1384						
Guatemala	73	89	88	78	79F	Former USSR					
Mexico	77	131	116	140	137F		4649	89554	5136F	6482F	6298F
USA	1311	1508	1613	1040	937	Developed Countries					
	1437	1672	1832	1220	1374F		9337	20708	17199	17612	18255
South America						North America	1650	2265	2716	2138	2758
Argentina	3025	3035	3619	3710	3398	Europe	2556	7762	7157	7038	7254
Brazil	239	179	219	276F	277F	Oceania	255	1415	1904	1789	1765
Chile	2206	2271	2774	2829	2566	Former USSR	4649	8954	5136	6482	6298
Colombia	171	122	157	147	94	Other Dev. Ctry	226	312	286	165	181
Peru	128	184	169	181	181F	Developing Countries					
	97	97	111	97F	97F		31382	37158	38923	36687	38028
Asia						Africa	4643	5860	6479	6177	6419
China	21717	25678	26092	24722	25185	Lat America	4745	5136	5826	5314	4913
India	6648	613F	5812F	6073F	5114F	Near East	1329	3528	3499	3323	3454
Indonesia	10509	12931	13694	12153	14436	Far East	20152	22629	23114	21868	23231
Iran IR	352	464F	508F	524F	504F	Other Dev Ctry.	3	5	5	5	5
Japan	247	353	576	628F	542F						
Korea D P RP	108	154	136	106	104F						
Pakistan	280	325F	330F	310F	290F						
Syria	595	773	727	710	530						
Thailand	180	178	134	198	221						
Turkey	342	461	455	390	440						
Yemen	817	2186	1972	1822	1881F						
	80	76	43	75	79F						

**Czechoslovakia data not available separately prior to 1991.

Source: FAO, United Nations

* - Unofficial estimate

F - FAO estimate

World Dry Bean Production (1,000 Metric Tons)

Country	1979-1981	1990	1991	1992	1993	Country	1979-1981	1990	1991	1992	1993
World	13506	16286	16632	15903	15973	Asia	5846	7777	7156	7752	7920
Africa	1518	1795	2000	1850	1960	Bangladesh	107	85F	85*	87*	88F
Angola	42	40F	36	36	36F	China	1748	1817F	1519F	2013F	1514F
Benin	31	48	55	62	52F	India	2561	3958	3614	3615*	4140*
Burundi	286	149	338	346	350F	Iran	62	150	188	190F	195F
Cameroon	98	60F	67F	70F	70F	Japan	102	150	133	102	101F
Ethiopia	19	83	130F	130F	130F	Korea Rep	38	23	27	21F	20F
Madagascar	45	37	40F	47F	50F	Myanmar	239	262	351	417	500F
Rwanda	185	220F	210F	200F	190F	Pakistan	65	100*	88	91*	90*
South Africa	84	129	120	34	52*	Philippines	32	31F	32F	32F	32F
Tanzania	251	260F	270F	195F	245F	Thailand	265	303	305	250	310
Togo	17	20	17	22	22F	Turkey	163	210	214	200	210F
Uganda	203	396	383	402	441	Vietnam	52	105F	110F	112F	115F
Zimbabwe	22	47F	48F	40F	45F	Europe	726	506	581	494	456
North & Central America	2619	3348	3485	2316	2443	Bulgaria	52	23	38	33	33F
Canada	78	107	113	53	120F	France	30	12F	12F	12F	12F
Costa Rica	12	34	33	36	32*	Greece	41	24	27*	27*	27F
Dominican Rep	50	53	26	37	37F	Italy	78	36	35	34	34F
El Salvador	41	53	67	75	69	Poland	98	116	132	99	107
Guatemala	68	120	103	127	125F	Portugal	41	41	37	36F	35F
Haiti	51	56F	45F	40F	40F	Romania	97	58	46	41	50F
Honduras	38	74	82	46	64F	Spain	86	53	49	43	40
Mexico	1015	1287	1379	804	700*	Yugoslav	144	102	161*	114*	80F
Nicaragua	39	63	72	64	73	Oceania	3	3	22	19	23
USA	1210	1469	1532	1000	1150F	Former USSR	60	100F	60F	62F	58F
South America	2733	2758	3328	3410	3113	Developed Countries	2263	2463	2561	1765	1960
Argentina	202	125	165	220F	220F	N. America	1288	1576	1645	1053	1270
Brazil	2165	2234	2745	2799	2536*	Europe	726	506	1581	494	456
Chile	113	87	117	91	53	Oceania	3	3	22	19	23
Colombia	77	132	108	120	120F	Former USSR	60	100	60	62	58
Ecuador	26	26	26	28	27F	Oth Dev Ctry	186	279	253	137	153
Paraguay	55	39	40	41	41F	Developing Countries	11243	13822	14071	14139	14013
Peru	55	46	53	47F	47F	Africa	1421	1639	1845	1792	1878
Venezuela	32	52	59*	50*	52*	Lat America	4064	4530	5168	4673	4286
						Near East	255	399	452	433	456
						Far East	5503	7255	6606	7240	7394

Source: FAO, United Nations

* - Unofficial estimate

F - FAO estimate

World Garbanzo Production (1,000 Metric Tons)

Country	1979-1981	1990	1991	1992	1993	Country	1979-1981	1990	1991	1992	1993
World	6070	6695	8061	6667	7513	Asia Continued					
Africa	251	282	313	285	285	Myanmar	79	101	104	128	162
Algeria	16	15	24*	21F	21F	Pakistan	396	562	531	518	329
Egypt	11	10	10	10	14*	Syria	49	36	26	74	75F
Ethiopia	126	101	120F	120F	120F	Turkey	243	860	655	770	800F
Moroc	38	59	67	26	26F	Europe					
Tanzania	7	23F	24F	16F	25F		98	73	63	54	54
Tunisia	29	26	23	32	36	Bulgaria	15	4	6*	4*	4F
						Greece	16	4	5	5	5F
						Italy	12	12	12	12F	13F
						Portugal	53	52	39	33	32
						Spain					
North & Central America						Oceania		191	221	172	162
Mexico	218	180	195	195	196	Developed Countries					
	218	180	195	195F	196F		102	271	292	231	220
South America						Europe	98	73	63	54	54
	26	22	25	36	27	Oceania		191	221	172	162
Argentina	4	2*	2*	2F	2F	Other Dev	4	8	8	5	5
Chile	9	6	9	19	11	Developing Countries					
Peru	2	3F	3F	3F	3F		5967	6423	7770	6436	7293
Asia						Africa	238	270	301	253	269
	5476	5947	7246	5946	6789	Lat America	244	202	219	230	223
Bangladesh	87	70	71	65	68F	Near East	418	984	1170	1077	1120
India	4474	4218	5366	4155	5106	Far East	5066	4967	6079	4877	5680
Iran	93	63*	266	203F	210F						
Iraq	12	5	1	8*	9*						
Israel	4	8	8	5	5F						
Jordan	1	1	1	2F	2F						
Lebanon	3	7F	8	9F	9F						

Source: FAO, United Nations

* - Unofficial Estimate

F - FAO Estimate

World Pea Production (1,000 Metric Tons)

Country	1979-1981	1990	1991	1992	1993	Country	1979-1981	1990	1991	1992	1993
World	8125	16549	12718	14173	14475	Europe	653	5325	4709	4836	5047
Africa	354	331	360	301	313	Austria	16	90F	90F	83F	87F
Algeria	3	2	3*	4F	4F	Bel-Lux	3	11	18	12	14F
Burundi	28	36	37	37	38F	Bulgaria	13	200	33	31	31F
Egypt	5	3	1	3	4F	Czechoslovakia (Czech Rep) (Slovakia)	63	542	252	321	184F 112*
Ethiopia	183	97	110F	110F	110F	Denmark	10	9	154	184	314F
Lesotho	4	4F	2F	2F	2F	Finland	13	3593	98	137	29
Morocco	24		68	10	10F	France	224		412	301	3475
Rwanda	36	18F	16F	18F	18F	Germany		45*	28	29	47F
South Africa	7	7F	6	7	5F	Germany NL	42		3155	3346	
Tanzania	7	23F	24F	16F	25F	Greece	2		9*	47F	
Uganda	5	12	15	15	16	Hungary	96	305	269	242	300F
						Italy	5	34	44	50	50F
North & Central America	260	426	633	656	1056	Netherlands	15	61	30	30F	35F
Canada	88	264	410	505	901	Romania	17	49	32	33	40F
Dominican Rep	1	1F	1F	1F	1F	Spain	5	11	11	9	8
Mexico	4	3	2	2F	3F	Sweden	8	11	9	10F	10F
USA	163	155	217	144	148F	UK	106	284	280	261	287
						Yugoslavia	15	18	26	18*	12F
South America	102	96	95	97	95	Oceania	139	375	538	499	512
Argentina	15	20*	12*	12F	12F	Australia	77	318	473	421	432
Bolivia	5	5F	6F	6F	6F	New Zealand	62	57	65	78	80F
Chile	13	7	5	8	5						
Colombia	33	35F	44F	44F	44F	Former USSR	3906	7580*	4255F	5520F	5369F
Ecuador	7	4	3F	3	3F						
Paraguay	3	1	2F	2	2F	Developed Countries	4960	13708	10136	11511	11984
Peru	22	18F	18F	18F	18F	N America	251	419	627	649	1049
Uruguay	2	3F	3F	3F	3F	Europe	653	5325	4709	4836	5047
Venezuela	2	2	2F	2F	2F	Oceania	139	375	538	499	512
						Former USSR	3906	7580	4255	5520	5369
						Other	11	9	7	8	7
Asia	2710	2415	2084	2264	2084	Developing Countries	3165	2841	2851	2662	2491
China	2267	1770F	1400F	1600F	1400F	Africa	340	320	351	289	301
India	295	461	550*	539	550*	Latin America	111	103	101	104	102
Iran IR		63*				Near East	15	74	9	11	12
Israel	1		1F	1F	1F	Far East	2699	2344	2120	2257	2076
Japan	2	2	1	1	1F						
Myanmar	16	13	14	16	22						
Syria	1										
Turkey	7	4	7	4	4F						

Source: FAO, United Nations

* - Unofficial Estimate

F - FAO estimate

Canadian Exports/Imports

Crop Year July/June

Country	Canadian Exports			Metric Ton			Canadian Imports			Metric Ton		
	Lentils 91-92	Lentils 92-93	Peas 91-92	Peas 92-93	Beans 91-92*	Beans 92-93	Lentils 91-92	Lentils 92-93	Peas 91-92	Peas 92-93	Beans 91-92	Beans 92-93
North America					Not Available						Not Available *	
Barbados	87	67	175	131		28						
Belize		86	60			20						
Costa Rica	169	608	198	228		107						
Cuba		1	9341			1						
Dominica	41	102										
Dominican Republic	203	215	220	273		122			42			
Grenada	10	14	32	86		11						
Guatemala		9				38						
Haiti			325	209		292						
Honduras	55											
Jamaica		1				54				1		
Marinique		161		620		1127						
Mexico	7433	3896	1901	1961		272						
Nicaragua						180						
Panama	1372	1879	333	669		107						
Saint Lucia		152										
St. Vincent Grenadines	41	32				20						
Trinidad Tobago	1142	933	4973	2274		154						
Turks Caicos Is.						1						
United States	3980	3444	14616	18938		20038	2073		7142			
South America												
Argentina	312	179										
Brazil	2471	4506	287	881		572						
Chile	2112	2691	960	1287								
Colombia	41554	28204	32015	21782		441						
Ecuador	4691	6501	564	2080		240						
Guyana			19	20								
Peru	10144	10735	243	2020		107			8			
Suriname			20	136								
Uruguay	454	577										
Venezuela	9981	8628	11931	9896		663						
Europe												
Armenia						19						
Belgium	10592	46506	59760	50332		1540			13			
Bulgaria		4004										
Cyprus	593	511		21								
Czechoslovakia	957	146										
Denmark	20	61	145	41		18						
Estonia		5										
Finland		102										

Canadian Exports/Imports

Crop Year July/June

Country	Canadian Exports			Metric Ton			Canadian Imports			Metric Ton		
	Lentils 91-92	Lentils 92-93	Peas 91-92	Peas 92-93	Beans 91-92*	Beans 92-93	Lentils 91-92	Lentils 92-93	Peas 91-92	Peas 92-93	Beans 91-92	Beans 92-93
Former USSR	846	18	18		Not Available	10					Not Available	
France	7727	16661	41	13		958	4					
Germany	11251	16907	4810	456		2600			8			
Greece	7393	7960	140	64		833						
Hungary	2689		285									
Ireland			3628	7343		1606						
Italy	12548	11656	519	93865		3102						
Malta			5	64		57						
Netherlands	4227	16420	36577	33943		1906			192			
Norway		20		42								
Poland	2204			140								
Portugal	102	43	450	750		1157						
Romania		80										
Spain	22273	28857	24802	62801		2328						
Sweden	1342	1485		41		59						
Switzerland	141											
Turkey	731						366			203		
United Kingdom	1049	1513	3766	2915		24665	177			219		
Yugoslavia	61	4315	20	885		61						
Asia												
China, P. Rep.	105		42	20						15		
Guam				20								
Hong Kong			1006	598						7		
India			16752	9320			454			369		
Indonesia			96									
Israel	1672	2033	142	232		117						
Iran Islamic Rep.		18										
Japan	428	82	11999	11252		1100				19		
Jordan				61		173						
Korea, South			61	80		1687						
Kuwait		20	60									
Lebanon	231	1675	15				1					
Malaysia			1640	1004						11		
Nepal				62								
Pakistan			228	409		400						
Philippines		41	328	933						2		
Singapore			474	41		36						
Sri Lanka			1000									
Syrian Arab R.			144									
Taiwan			4059	3278								
Thailand			363	712			70			82		

Canadian Exports/Imports

Crop Year July/June

Country	Canadian Exports		Metric Ton			Canadian Imports		Metric Ton				
	Lentils 91-92	Lentils 92-93	Peas 91-92	Peas 92-93	Beans 91-92*	Beans 92-93	Lentils 91-92	Lentils 92-93	Peas 91-92	Peas 92-93	Beans 91-92	Beans 92-93
United Arab Emirates	151	447	164	62	Not Available							
Yemen			494	511							Not Available	
Oceania												
Australia	798	481	17	64		2434	520		377			
New Zealand	20					526			143			
Tokelau							21					
Africa												
Algeria	2002	22000	8171	525								
Angola	24					73						
Benin		176										
Cameroon						90						
Cape Verde	132											
Congo						54						
Djibouti			1267									
Egypt	5560											
Ethiopia			3227									
Guinea	44											
Kenya	3012					143						
Malawi								90				
Mauritania		123										
Mauritius	123	1262		228								
Morocco		2880	200									
Mozambique	4023	4344	3884	8427		4490						
Nambia						253						
Niger			64									
Reunion-Africa		243				20						
Rwanda						1503						
Sao Tome Principe						40						
Somalia				22		50						
South Africa	21	472	1560	5225		3347						
Sudan	477	523	1150	300								
Swaziland						79						
Tanzania						40						
Togo	80		20			60						
Zambia		230				46						
Zimbabwe						947						
Others	0	0	0	0	0	0	0	0	0	0	0	0
Total	191901	265739	271805	358393	0	83222	3706	2223*	8943	7642*	0	587*

Source: Ag Canada

*Breakdown by individual countries not available