

USDA Update

Dr. Craig Morris
Deputy Administrator



Ag Exports=Success Story

- Strongest 5-year stretch in U.S. history for agricultural exports. In FY 2013:
 - Total value \$141 billion
 - Up \$5 billion over FY 2012
 - Supported nearly a million U.S. jobs

AMS Facilitates Exports

- For U.S. exporters, AMS helps:
 - meet importing countries' requirements,
 - maintain market access,
 - open new markets,

U.S./Canadian Regulatory Cooperation Council (RCC)

- AMS co-chairs RCC's initiative to harmonize U.S. and Canadian poultry and meat cut nomenclature.
 - Allows U.S. producers to ship their products with U.S. cut names. No need to uniquely label or re-box product in accordance with Canadian poultry terms.
 - Common trade language benefits both sides of the border, enhances trade opportunities.

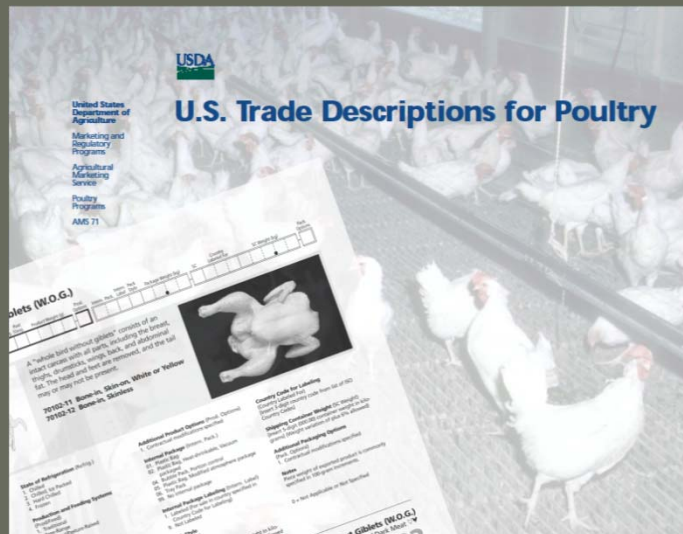
U.S./Canadian Regulatory Cooperation Council (RCC)

- AMS worked with industry, CFIA and NAMA
 - Updating the poultry and meat products in the Meat Buyers Guide.



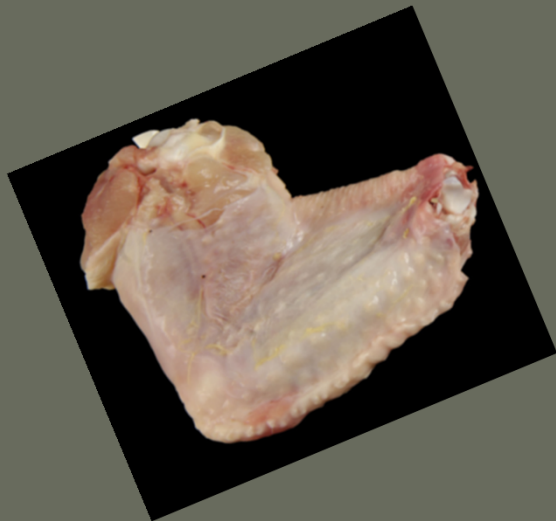
U.S./Canadian Regulatory Cooperation Council (RCC)

- Conducted side-by-side comparison of poultry cuts in CFIA's meat cuts manual and the U.S. Trade Descriptions for Poultry.



U.S./Canadian Regulatory Cooperation Council (RCC)

- February 24: CFIA pilot project began
 - Applicable poultry cut names include chicken tenderloin, turkey tenderloin, broiler V-wing and turkey V-wing.



U.S./Canadian Regulatory Cooperation Council (RCC)

- Consumers will not be impacted by this pilot as it only applies to poultry cuts traded in wholesale.



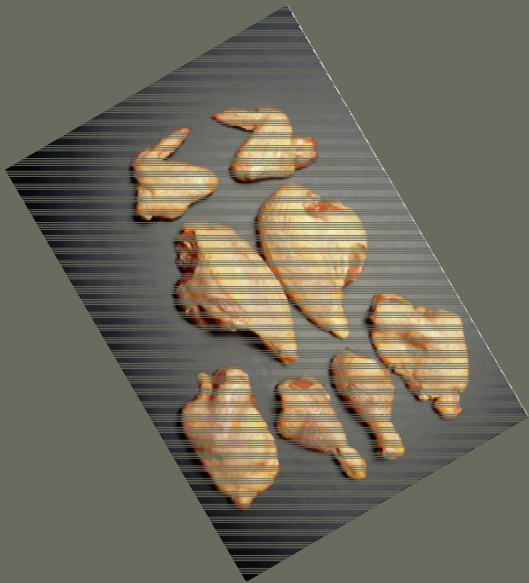
Export Certification FDA Regulated Egg Foods

- Agreement signed in 2013
- Negotiated Certificates with:
 - Mexico, UAE, EU, Trinidad & Tobago
- Outreach to:
 - China, Singapore, Indonesia, Israel, & Barbados
- To Date –
 - 350 certificates issued
 - 38 Registered Facilities



United Nations Economic Commission for Europe

- Specialized Section on Meat
 - Revisions and Updates on Chicken and Turkey Carcasses and Cuts in 2012




United Nations Economic Commission for Europe

- Proposed Standard for Processed Poultry in 2013
 - Additional Sections include type of meat, meat preparations, and thermal processing
 - Types of items included in this section
 - chicken nuggets, glazed wings, grilled strips, patties, goose and duck cuts



USDA Fowl Meat Verification Program

- Procedure Complete
 - QAD 1036 Procedure dated February 16, 2014

	United States Department of Agriculture	Agricultural Marketing Service	Livestock Poultry and Seed Program Quality Assessment Division Washington, DC 20250	QAD 1036 Procedure February 16, 2014 Page 1 of 3
---	---	--------------------------------------	---	--

USDA Fowl Meat Verification Program

I. GENERAL
The USDA Fowl Meat Verification (FMV) Program services are provided by the United States Department of Agriculture (USDA), Agricultural Marketing Service (AMS), Livestock Poultry and Seed (LPS) Program, Quality Assessment Division (QAD) under the authority of the Agricultural Marketing Act (AMA) of 1946, as amended, and the Code of Federal Regulations (CFR) 7, Part 70, in cooperation with the Food Safety Inspection Service (FSIS).

This document specifies the requirements for the USDA-FMV Program. The USDA-FMV Program is a voluntary, user-fee service available to fowl producers and processors to provide third-party verification that fowl meat has been produced and/or processed from fowl and properly labeled.

USDA-FMV Program Manuals are submitted by clients for approval, and are monitored by the Quality Assessment Division in accordance with the USDA Quality System Assessment (QSA) Program and the USDA-FMV Program.

All requirements of the USDA-FMV Program are generic and are intended to be applicable to all clients, regardless of type, size, and product provided. Any requirement(s) of this Program that cannot be applied due to the nature of the client and its product can be considered for exclusion.


2. SCOPE
These requirements apply to the auditing and approval of production facilities, slaughter and/or processing facilities and any other entities in the process requesting that fowl meat be verified as fowl; specifically, that fowl being produced and processed is fowl meat and does not contain broiler meat. Fowl meat products shall be derived from mature fowl chickens as defined in AMS 70.201. (f) and (g).

3. REFERENCES
The following referenced documents are indispensable for the application of this document. For dated references, only the edition cited applies. For undated references, the latest edition of the referenced document (including any amendments) applies.

- 3.1 *GVD 1000, QSVF General Policies and Procedures*
- 3.2 *QAD 1036 Checklist, USDA FMV Program*
- 3.3 *GVD 1002 USDA Quality System Assessment Program*
- 3.4 *USDA-FMV Program Website:*
<http://www.ams.usda.gov/AMSV1.0/VerifiedOperationsRegistry>
- 3.5 *Official Listing USDA-FMV Program Suppliers at:*
<http://www.ams.usda.gov/AMSV1.0/gefile?dDocName=STELPRDC5094182>

The U.S. Department of Agriculture (USDA) prohibits discrimination in all its programs and activities on the basis of race, color, national origin, age, disability, and where applicable sex, marital status, parental status, religion, sexual orientation, genetic information, political beliefs, reprisal, or because all or part of an individual's income is derived from any public assistance program (not all prohibited bases apply to all programs). Persons with disabilities who require alternative means for communication of program information (Braille, large print, audiotape, etc.) should contact USDA's TARGET Center at (202) 726-2600 (voice and TDD). To file a complaint of discrimination, write USDA, Director, Office of Civil Rights, 1400 Independence Avenue, S.W., Washington, D.C. 20250-9410, or call (800) 795-5272 (voice) or (202) 726-2815 (TDD). USDA is an equal opportunity provider and employer. (Revised July 18, 2009)

Date Issued: February 16, 2014
Date Revised: NA

Approved:  JLR

USDA Fowl Meat Verification Program

- Scope
 - Applies to production facilities, slaughter and/or processing facilities.
 - Fowl being produced and processed is fowl meat. It does not contain broiler meat. Fowl meat products are derived from mature fowl chickens as defined in AMS70.201. (f) and (g).



USDA Fowl Meat Verification Program

- Applicant Status

- 2 facilities approved, 2 waiting on corrective actions, 2 to be scheduled.



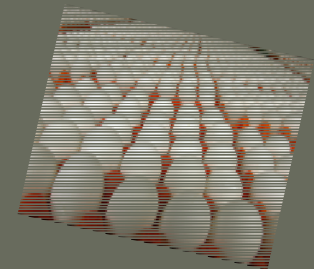
International Trade Data System (ITDS)

- On February 19, 2014, President Barack Obama signed an Executive Order focusing on reducing processing and approval times for small businesses that import products and export American-made goods and services by completing the International Trade Data System (ITDS) by December 2016.
- ITDS objective: Transition from paper to electronic transmission of information required by the U.S. Government to import cargo and, in the near future, transmit export documents including certificates.



International Trade Data System (ITDS)

- AMS facilitates importing fresh shell eggs for retail sales; hatching eggs; and restricted eggs not for human food as required by the Regulations Governing the Inspection of Eggs.
- These regulations require importers to submit an application for inspection (LPS-222) to AMS.
- To meet the December 2016 deadline for implementing ITDS, AMS harmonized the language on form LPS-222 with the language of other government agencies involved with admitting imported eggs.



International Trade Data System (ITDS)

- During transition to ITDS, importers must submit a hard copy of form LPS-222 until ITDS has been completed.
- Upon completion, stakeholders will be provided detailed information and instructions for electronic data entry in the Automated Customs Environment system maintained by the Department of Homeland Security's Customs and Border Protection.



International Trade Data System (ITDS)

The updated form LPS-222, Import Request (Shell Eggs), can be downloaded at: <http://www.ams.usda.gov/AMSV1.0/getfile?dDocName=STELDEV3004641>

FORM APPROVED - OMB NO. 0381-0113

U.S. DEPARTMENT OF AGRICULTURE AGRICULTURAL MARKETING SERVICE LIVESTOCK, POULTRY AND SEED PROGRAM		PERMIT NUMBER: SEA -
IMPORT REQUEST (SHELL EGGS)		
<small>Instructions: See reverse for completion or hyperlink for electronic filing in the Automated Commercial Environment (ACE).</small>		
Section A - Application for Import Inspection		Section D - Agreement for Temporary Transfer
1. Name and Address of Consignor:	Date:	1. Name and Address for Location of Product for AMS Inspection:
2. Name and Address of Importer:		2. Name and Telephone Number for Contact at the Location:
Section B - Notice of Product Shipped Under Seal(s)		
1. Point of Entry:	2. Estimated Date of Arrival:	
Section C - Identification of Shipment		Section E - Product Disposition
1. Country of Origin:	2. U.S. Customs Entry Number:	1. Import Document Correct: Yes No
3. Name and Address of Consignee:		2. Labeling Correct: Yes No
4. Type of Product:		Ambient Transport Temperature: _____ °F
* Non-Restricted Eggs (Table Eggs)	Number of Containers:	Quantity Eggs: Dozens
Restricted Eggs (De-characterized Inedible)		Product Released to Enter Commerce (LPS Signature and Date):
Hatching Eggs		Quantity: Dozens
I hereby attest that I have acquired an Import Permit from the Animal and Plant Health Inspection Service (APHIS), USDA to import hatching eggs and inedible egg products.		
Section D - Agreement for Temporary Transfer		Refused Entry - Cause and Disposition:
<p><small>IN CONSIDERATION of the U.S. Collector of Customs granting me (us) permission to transfer temporarily the products described in Section "C" which are offered for entry into the United States, I (WE) AGREE, under bond filed with said Collector of Customs and subject to the penalties prescribed in laws enacted by Congress and regulations issued thereunder by the Secretary of the Treasury, to hold the said products intact at the location indicated to the right until they have been inspected and passed by a Livestock, Poultry and Seed Program Representative or have been otherwise disposed of under the supervision of a U.S. Customs Officer or a Livestock, Poultry and Seed Program Representative.</small></p>		Number of Containers: _____
		Quantity: _____

LPS-222 (04-14)

International Poultry and Egg Market News Reports

- Canadian shell egg prices
- U.S. and Canadian shell egg and egg products, import and export quantities
- Live poultry quantities slaughtered in Mexico City markets
- U.S. imported poultry and meat quantities by country

Market News Reports Online

- <http://www.ams.usda.gov/AMSpv1.0/LPSMarketNewsPage>

The screenshot shows the USDA Agricultural Marketing Service website. At the top, there is a banner with the USDA logo and the text "United States Department of Agriculture Agricultural Marketing Service". Below the banner is a navigation menu with links: Home, About AMS, Newsroom, Opportunities, Online Forms, Help, and Contact Us. The main content area is titled "Market News" and features a sub-section for "Livestock, Poultry, and Grain Market News". This section includes a paragraph describing the primary function of the Livestock, Poultry, and Grain Market News Division (LPGMN) and another paragraph explaining the new LPGMN Division's mission. To the left of the main content is a search bar and a "Browse by Subject" menu. To the right are sections for "I Want To" (with links to subscribe to reports and find new reports) and "Resources" (with links to various market news portals and reports).

USDA United States Department of Agriculture
Agricultural Marketing Service

Home About AMS Newsroom Opportunities Online Forms Help Contact Us

You are here: Home

Search AMS

Go

Advanced Search
Search Tips
Market News Search

Browse by Subject

- Market News
- Commodity Areas
- Grading, Certification and Verification
- Science and Laboratories
- National Organic Program
- Commodity Purchasing
- Agricultural Transportation
- Farmers Markets and Local Food Marketing
- Regulatory Programs
- Research and Promotion Programs
- Marketing Orders and Agreements
- Grant Programs
- International Marketing

Market News

Livestock, Poultry, and Grain Market News

The primary function of the Livestock, Poultry, and Grain Market News Division (LPGMN) of the Livestock, Poultry, and Seed Program (LPS) is to compile and disseminate information that will aid producers, consumers, and distributors in the sale and purchase of livestock, meat, poultry, eggs, grains, and their related products regionally, nationally and internationally.

The new LPGMN Division will continue the long established traditions of its two predecessors in providing current and unbiased, price and sales information to assist in the orderly marketing and distribution of farm commodities. Your familiar reports and personnel will remain the same. The only thing that is changing is our name.

Browse by Commodity

Reports

- Cattle
- Goats
- Sheep
- Swine
- Meat
- Feedstuffs
- Grains
- Hay
- Bioenergy
- International
- Organic
- Other
- Poultry & Eggs

Publications

- Livestock & Grain

I Want To

- Subscribe to Reports
- Subscribe to Mobile Reports
- Find New Reports
- Need help finding a report or with our website?

Resources

- Livestock and Grain Market News Portal
- Poultry and Egg Market News Portal
- All LPGMN Reports
- All LPGMN Reports by Office
- Reference Room / Glossary of Terms

Thank You and Questions?



Dr. Craig Morris

Deputy Administrator

AMS Livestock, Poultry and Seed Program

202-720-5705

craig.morris@ams.usda.gov