

**THE VISUAL AIDS ON THE FOLLOWING  
PAGES ARE FOR REFERENCE ONLY AND  
NOT INTENDED FOR OFFICIAL USE.**

**TO PURCHASE OFFICIAL VISUAL AIDS PLEASE CONTACT  
THE SPECIALTY CROPS INSPECTION DIVISION'S  
EQUIPMENT AND FORMS DEPOT**

**USDA, AMS, FVP, SCI  
831 MITTEN ROAD, ROOM 200  
BURLINGAME, CA 94010  
PHONE: 650-552-9073  
FAX: 650-552-9147**

**[EQUIPMENT CATALOG](#)**

Aspergillus flavus Mold  
(A. flavus)

Other Molds

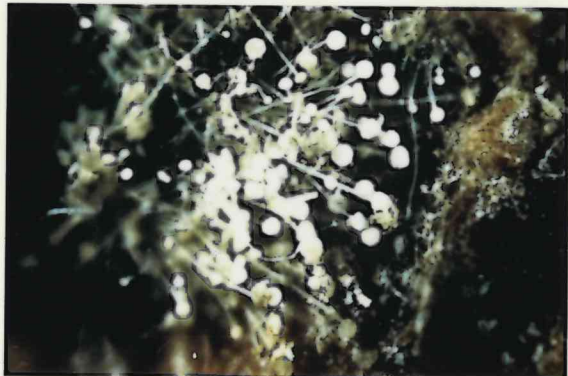
1.



2.



3.



4.



5.



4. Kernel magnified to show characteristic of *A. Niger* (black conidial heads).

5. Kernel magnified to show other types of mold.

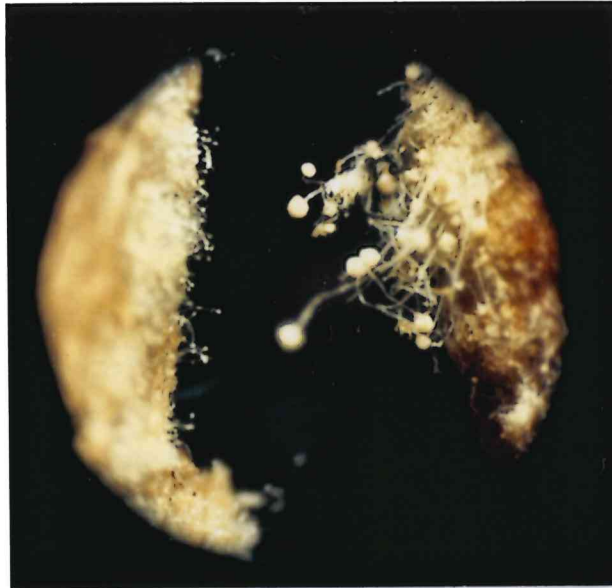
1. Kernel slightly magnified to show fuzzy or beady appearance of A. flavus.
2. Kernel magnified to show conidial heads indicating A. flavus.
3. Kernel under higher magnification to show pronounced characteristics of A. flavus.

Aspergillus flavus Mold  
Identification

PEN - CP - 3 . Revised 9/82

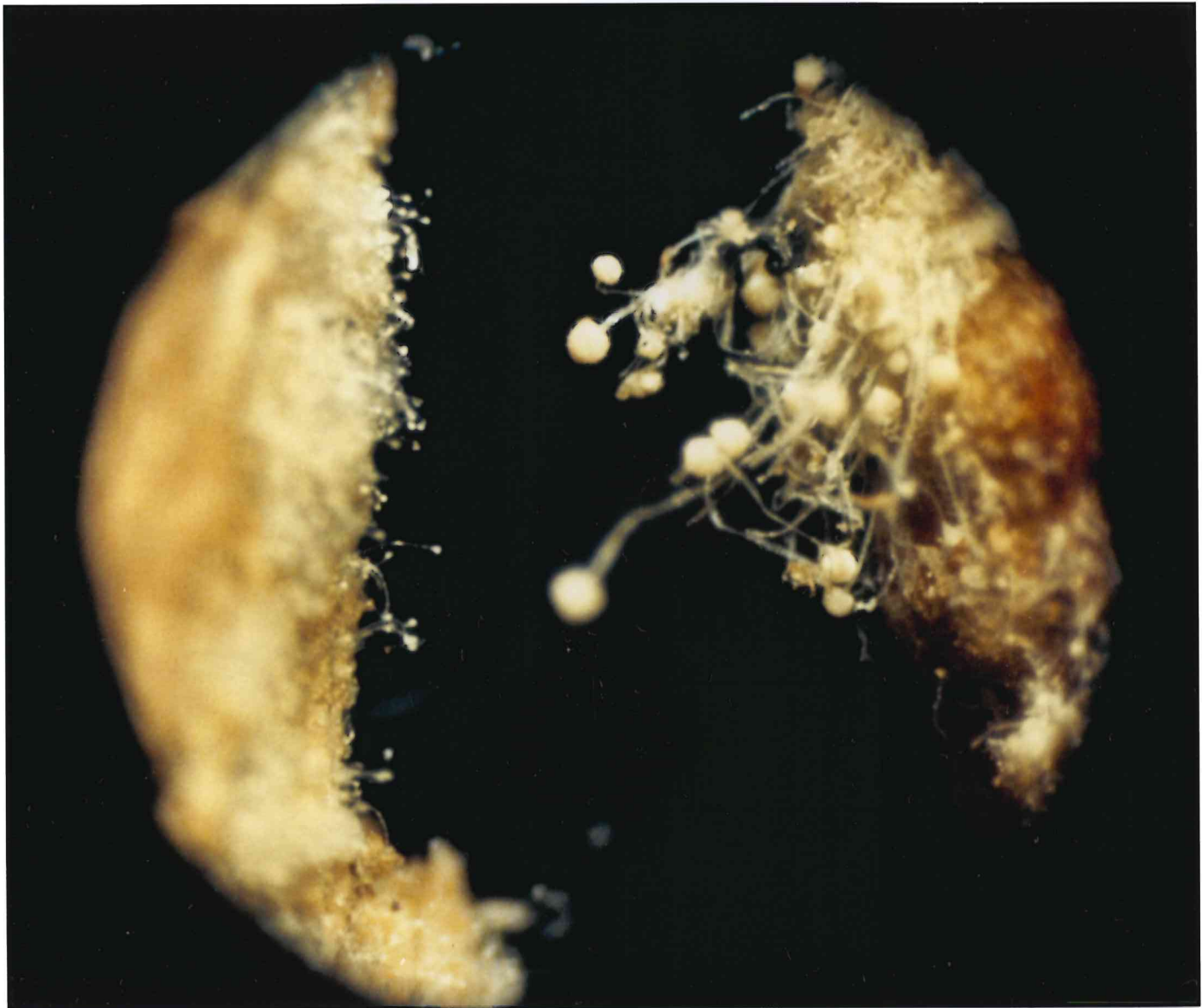
Top photo shows comparison of “mini-mold” (left) and A-flavus (right) under 4X magnification.

The small stems and cone shaped heads of “mini-mold” compared to the large stems and round conidial heads of A-flavus are more apparent in the enlargement below.



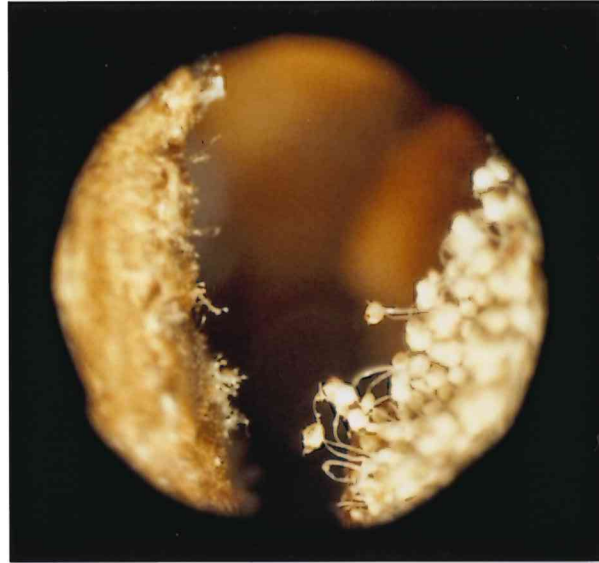
“Mini-Mold” /A-Flavus  
Comparison

Identification  
PEN-CP-3-A-6/89



Top photo shows comparison of “mini-mold” (left) and A-flavus (right) under 4X magnification.

The small stems and cone shaped heads of “mini-mold” compared to the large stems and round conical heads of A-Flavus are more apparent in the enlargement below.



“Mini-mold” /A-flavus  
Comparison

Identification  
PEN-CP-3-B-6/89



**Not Damage**



**Damage**

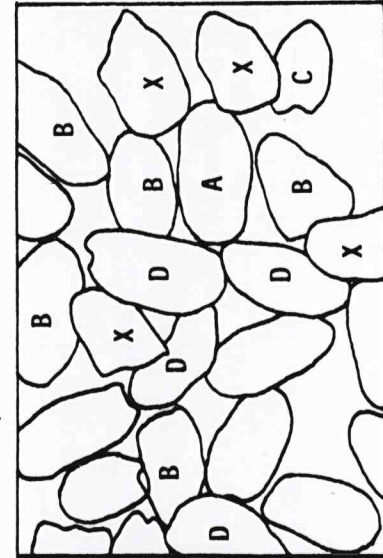
Freeze damaged peanuts have a slightly dull and faded skin color with the veins often becoming dark and conspicuous. The flesh has a glassy or an abnormal dull appearance and may also show a noticeable yellow, brown or gray discoloration on the oval side of the kernel.

**Not Damage**

The kernels must be split, the skins removed, and both the flat and round sides examined when determining freeze damage. The flesh of the half kernel must have an indication of freeze damage to be scored. Do not confuse surface discoloration not penetrating the flesh with freeze damage. Any peanut with a definitely rancid flavor is damaged, regardless of skin or flesh color.

**Damage**

**PEANUT KERNELS SHOWING CHARACTERISTICS OF FREEZE DAMAGE**



X Indicates kernels not having definite characteristics of freeze damage and are not scorable.

Remaining kernels show one or more of the following definite characteristics of freeze damage and are scorable.

- A Vein discoloration with glassy appearance.
- B Yellow to mustard discoloration accompanied by glassy appearance.
- C Yellow to brown discoloration accompanied by glassy appearance.
- D & Unmarked kernels -- Kernels which have a glassy appearance but do not have the discoloration as described in A, B & C shall be scored as damage only if hard, brittle and/or have a distinctly objectionable taste.

PEANUT KERNELS - FREEZE DAMAGE  
Pen-CP-6  
(Revised 9/89)



SURFACE DISCOLORATION



MINOR DEFECTS



PN-CP-1-8/86

ADHERING DIRT ON PEANUTS



MINOR DEFECTS

DAMAGE

PN-CP-2-8/86

# ADHERING MATERIAL ON PEANUT KERNELS



## Minor Defects

Whole or half kernels with adhering material in equal or greater amounts than shown are scored as minor defects.

**USDA**

**PN - CP - 5  
Adhering Material  
on Peanut Kernels  
November 1995**

GREEN FLESH DISCOLORATION



Maximum allowed before minor.

PNT-CP-10  
February 2003

GREEN FLESH DISCOLORATION



Maximum allowed before minor.

PNT-CP-10  
February 2003

GREEN FLESH DISCOLORATION



Maximum allowed before minor.

PNT-CP-10  
February 2003

GREEN FLESH DISCOLORATION



Maximum allowed before minor.

PNT-CP-10  
February 2003

GREEN FLESH DISCOLORATION



Maximum allowed before minor.

PNT-CP-10  
February 2003

GREEN FLESH DISCOLORATION



Maximum allowed before minor.

PNT-CP-10  
February 2003

GREEN FLESH DISCOLORATION



Maximum allowed before minor.

PNT-CP-10  
February 2003

GREEN FLESH DISCOLORATION



Maximum allowed before minor.

PNT-CP-10  
February 2003



# High Moisture Foreign Material For Peanuts



**Citron**



**Horse Nettle (Briarball or Treadsatter Ball)**



**Pieces of Citron**



**Gherkins**



**Small Citrons**



**Maypops**

PURPLE FLESH DISCOLORATION



Maximum allowed before minor.

PNT-CP-9  
July 2000

PURPLE FLESH DISCOLORATION



Maximum allowed before minor.

PNT-CP-9  
July 2000

PURPLE FLESH DISCOLORATION



Maximum allowed before minor.

PNT-CP-9  
July 2000

PURPLE FLESH DISCOLORATION



Maximum allowed before minor.

PNT-CP-9  
July 2000

PURPLE FLESH DISCOLORATION



Maximum allowed before minor.

PNT-CP-9  
July 2000

PURPLE FLESH DISCOLORATION



Maximum allowed before minor.

PNT-CP-9  
July 2000

PURPLE FLESH DISCOLORATION



Maximum allowed before minor.

PNT-CP-9  
July 2000

PURPLE FLESH DISCOLORATION



Maximum allowed before minor.

PNT-CP-9  
July 2000

PURPLE FLESH DISCOLORATION



Maximum allowed before minor.

PNT-CP-9  
July 2000

PURPLE FLESH DISCOLORATION



Maximum allowed before minor.

PNT-CP-9  
July 2000