

Bean Market News

1996 Summary

USDA Agricultural Marketing Service

711 'O' Street

Greeley, Colorado USA 80631

Phone 970-353-9750

Fax 970-353-9790

Released May 1997



USDA - AMS LIVESTOCK AND GRAIN MARKET NEWS

711 "O" Street
 Greeley, Colorado USDA 80631
 Telephone: 970-353-9750 Fax: 970-353-9790

TABLE OF CONTENTS

	Page
Dealer Price Trends - Graphs	
Pinto - Northern Colorado	1
Pinto - North Dakota/Minnesota	2
Pea Bean - Michigan	3
Great Northern - Western Nebraska/Eastern Wyoming	4
*Monthly Average Prices - By Crop Year - FOB Dealer	
Pinto, Great Northern, Small Red , Pink	5
Black, Cranberry, Light Red Kidney	7
Small White, Pea Bean, Dark Red Kidney	9
Light Red Kidney , Baby Lima, Blackeye, Pink, Garbanzo (California)	13
*Monthly Average Prices - By Crop Year - FOB Grower	
Pinto, Great Northern, Small Red, Pink	6
Black, Cranberry, Light Red Kidney	8
Small White, Pea Bean, Dark Red Kidney	10
*Monthly Average Prices Peas & Lentils- By Crop Year - FOB Dealer and Grower	11-12
Dry Edible Beans, Production by Commercial Class and Canada Crop Production	14
Dry Edible Beans - Production by Commercial Class	15-16
Dry Pea and Lentil Production - USADPLC	17
Dry Pea and Lentil Production - USDA, NASS	18
Dry Beans, U.S. Exports by Country of Destination	19-21
Dried Peas, U.S. Exports by Country of Destination	22-24
USDA/CCC Purchases of Dry Edible Beans, Peas & Lentils	24
USDA/ F&V Purchases for Domestic Feeding Programs	25
U.S. Exports, Dry Beans and Dry Ripe Peas	26
U.S. Exports Shelled Beans Other Than Canned Dried, Beans Other Than Shelled, and Shelled Canned Dry Beans	27-28
World Pulse, Dry Bean, Garbanzo and Pea Production	29-32
Canadian Exports/Imports	33-35

**Average monthly prices are assembled by selected areas to give an indication of market trends rather than to provide a complete history of each area reported weekly. Average prices are numerical averages and are not weighted to reflect sales volume.*

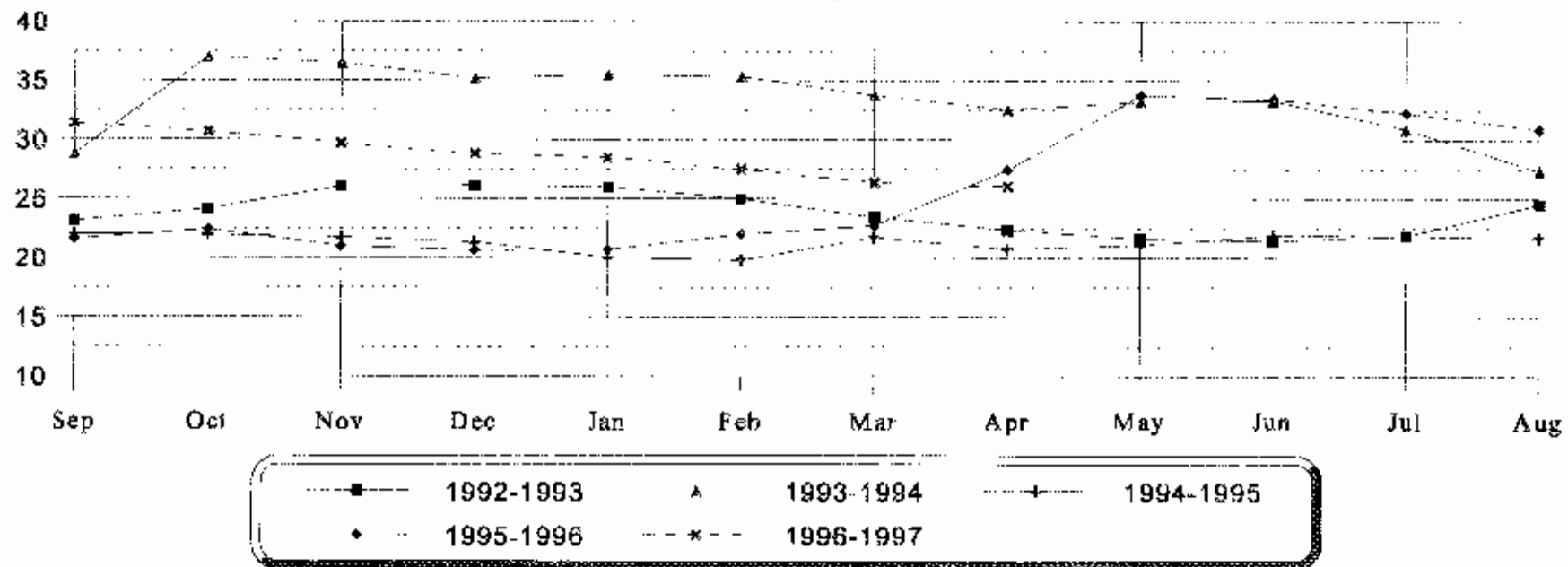
Monthly Average Prices Per Cwt. by Crop Year fob Dealer

PINTO - Northern Colorado

Year	Sep	Oct	Nov	Dec	Jan	Feb	Mar	Apr	May	Jun	Jul	Aug	Avg
1992-1993	23.10	24.13	26.06	26.13	26.00	25.00	23.45	22.38	21.63	21.45	21.88	24.55	23.81
1993-1994	28.81	37.00	36.50	35.17	35.50	35.31	33.75	32.56	33.19	33.30	30.88	27.35	33.28
1994-1995	22.00	21.94	21.75	21.33	20.05	19.81	21.75	20.75	21.10	21.94	21.88	21.70	21.33
1995-1996	21.56	22.40	21.00	20.67	20.70	22.00	22.75	27.45	33.75	33.44	32.25	30.88	25.74
1996-1997	31.38	30.70	29.69	28.83	28.50	27.50	26.38	26.05					

PINTO - Northern Colorado

Dealer Prices Per Cwt by Crop Year



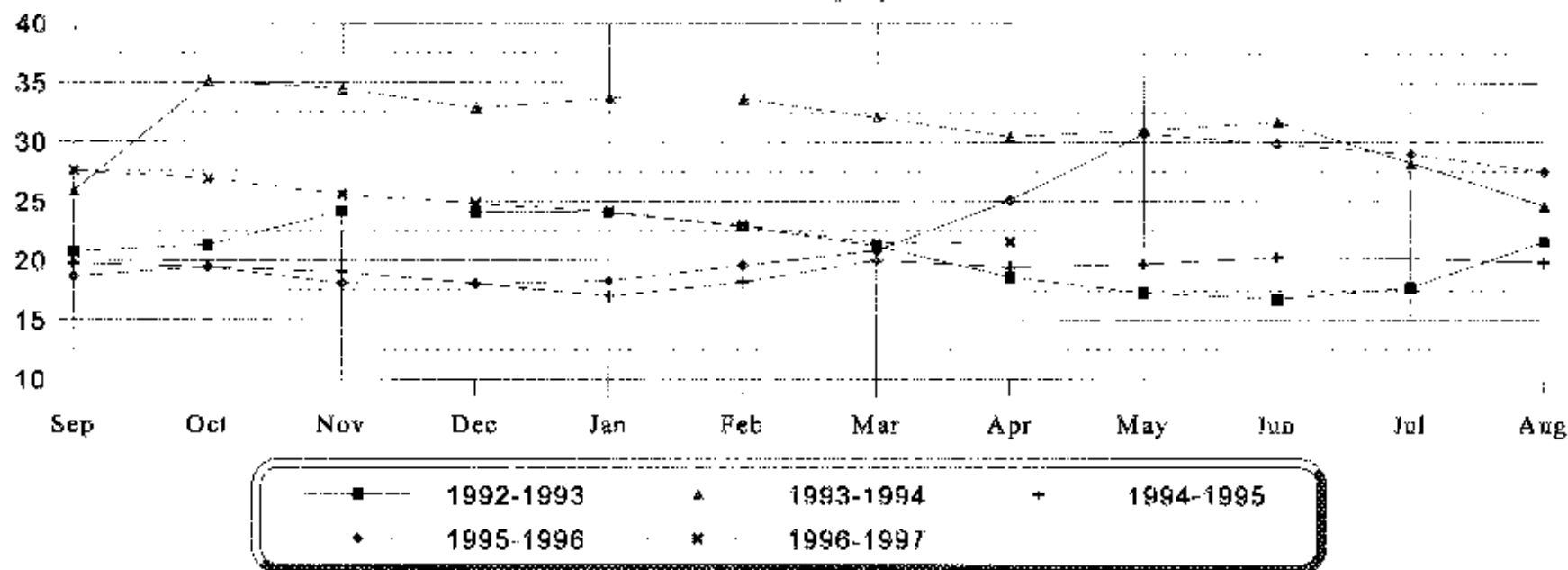
Monthly Average Prices Per Cwt. by Crop Year fob Dealer

PINTO - North Dakota/Minnesota

Year	Sep	Oct	Nov	Dec	Jan	Feb	Mar	Apr	May	Jun	Jul	Aug	Avg
1992-1993	20.75	21.31	24.16	24.13	24.06	22.88	21.25	18.63	17.31	16.80	17.75	21.65	20.89
1993-1994	25.88	35.13	34.45	32.83	33.69	33.63	32.06	30.44	31.00	31.68	28.25	24.65	31.14
1994-1995	19.75	19.44	19.00	18.08	17.00	18.19	20.05	19.47	19.73	20.31	20.25	19.85	19.26
1995-1996	18.66	19.43	18.06	18.00	18.30	19.59	20.88	25.10	30.69	29.88	28.98	27.50	22.92
1996-1997	27.56	26.90	25.56	24.83	24.13	23.00	21.50	21.60					

PINTO - North Dakota/Minnesota

Dealer Prices For Cwt by Crop Year



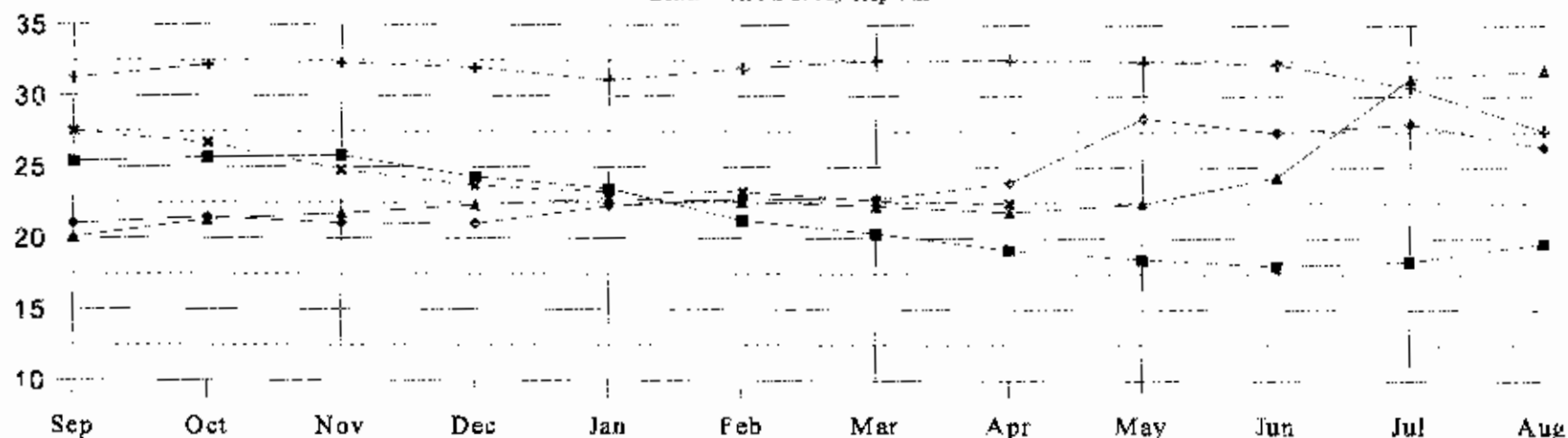
Monthly Average Prices Per Cwt. by Crop Year fob Dealer

PEA BEAN - Michigan No. 1's

Year	Sep	Oct	Nov	Dec	Jan	Feb	Mar	Apr	May	Jun	Jul	Aug	Avg
1992-1993	25.38	25.67	25.81	24.31	23.50	21.25	20.33	19.19	18.53	18.05	18.38	19.68	21.67
1993-1994	20.06	21.31	21.75	22.33	22.78	22.56	22.25	21.84	22.44	24.33	31.25	31.85	23.73
1994-1995	31.25	32.19	32.35	32.00	31.10	31.94	32.50	32.56	32.45	32.25	30.63	27.60	31.45
1995-1996	21.00	21.50	21.06	21.00	22.25	22.75	22.75	23.90	28.44	27.44	28.05	26.44	23.88
1996-1997	27.50	26.70	24.81	23.67	23.35	23.25	22.63	22.45					

PEA BEAN - Michigan No. 1's

Dealer Prices Per Cwt by Crop Year



■	1992-1993	▲	1993-1994	+	1994-1995
◆	1995-1996	★	1996-1997		

Monthly Average Prices Per Cwt. by Crop Year for Dealer

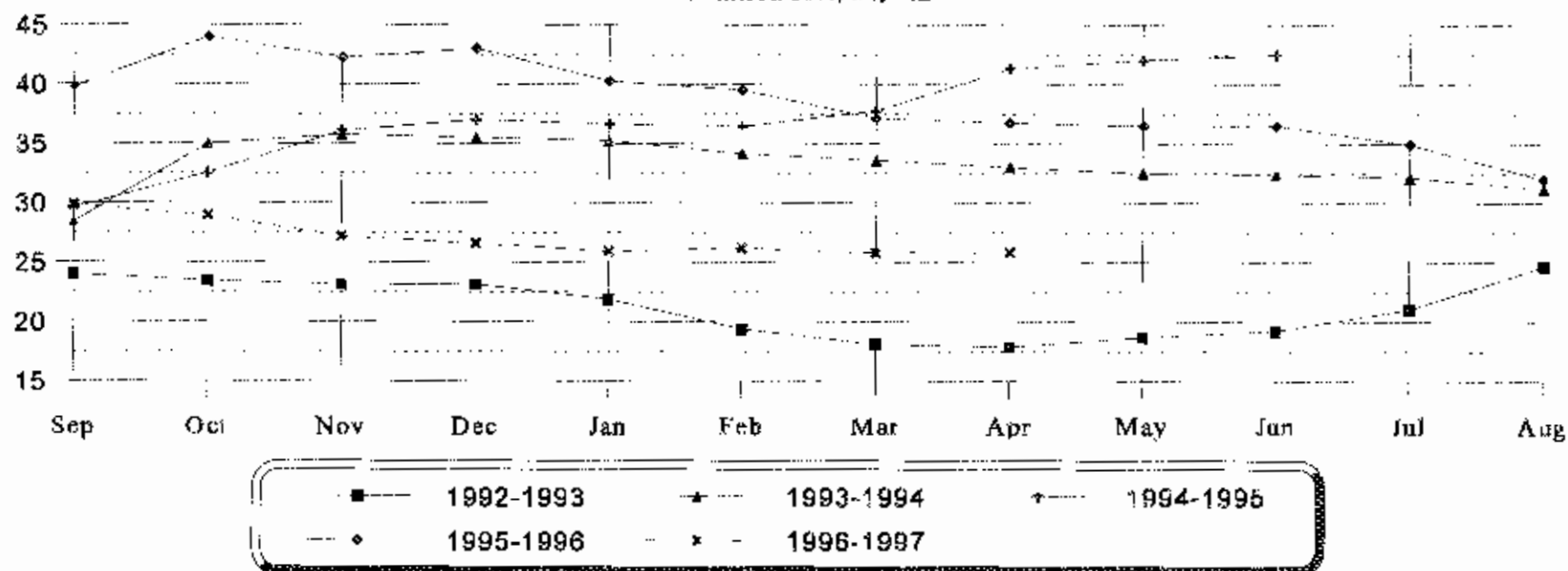
GREAT NORTHERN - Western Nebraska/Eastern Wyoming

Year	Sep	Oct	Nov	Dec	Jan	Feb	Mar	Apr	May	Jun	Jul	Aug	Avg
1992-1993	24.00	23.44	23.13	23.13	21.88	19.38	18.10	17.88	18.69	19.25	21.06	24.63	21.21
1993-1994	28.42	35.00	35.75	35.50	35.25	34.13	33.60	33.00	32.50	32.40	32.13	31.20	33.24
1994-1995	29.56	32.56	36.05	37.00	36.65	36.44	37.78	41.31	42.05	42.50	NE	NE	37.19
1995-1996	39.81	44.00	42.25	43.00	40.25	39.50	37.13	36.75	36.50	36.50	34.95	32.00	38.55
1996-1997	29.84	28.95	27.19	26.58	25.94	26.19	25.81	25.85					

NE - Not Established

GREAT NORTHERN - Western Nebraska - Eastern Wyoming

Dealer Prices Per Cwt by Crop Year



Monthly Average Prices Per Cwt. by Crop Year fob Dealer

Year	Sep	Oct	Nov	Dec	Jan	Feb	Mar	Apr	May	June	Jul	Aug	Avg
PINTO - Northern Colorado													
1992-1993	23.10	24.13	26.06	26.13	26.00	25.00	23.45	22.38	21.63	21.45	21.88	24.55	23.81
1993-1994	28.81	37.00	36.50	35.17	35.50	35.31	33.75	32.56	33.19	33.30	30.88	27.35	33.28
1994-1995	22.00	21.94	21.75	21.33	20.05	19.81	21.75	20.75	21.10	21.94	21.88	21.70	21.33
1995-1996	21.56	22.40	21.00	20.67	20.70	22.00	22.75	27.45	33.75	33.44	32.25	30.88	25.74
1996-1997	31.38	30.70	29.69	28.83	28.50	27.50	26.38	26.05					
PINTO - North Dakota/Minnesota													
1992-1993	20.75	21.31	24.16	24.25	24.06	22.88	21.25	18.63	17.31	16.80	17.75	21.65	20.90
1993-1994	25.88	35.13	34.45	32.83	33.89	33.63	32.06	30.44	31.00	31.68	28.25	24.65	31.14
1994-1995	19.75	19.44	19.00	18.08	17.00	18.19	20.05	19.47	19.73	20.31	20.25	19.85	19.26
1995-1996	18.66	19.43	18.06	18.00	18.30	19.59	20.88	25.10	30.69	29.88	28.98	27.50	22.92
1996-1997	27.56	26.90	25.56	24.83	24.13	23.00	21.50	21.60					
PINTO - Idaho													
1992-1993	24.00	25.42	26.50	26.50	26.44	25.50	24.08	22.56	21.75	21.60	22.19	24.85	24.28
1993-1994	27.75	36.89	36.88	35.67	35.75	35.50	34.13	33.00	34.06	34.33	31.56	27.40	33.56
1994-1995	22.69	23.00	22.55	21.83	20.95	20.81	22.25	21.63	21.95	22.31	22.63	22.60	22.10
1995-1996	21.69	22.90	22.25	21.83	21.75	22.63	23.25	27.45	34.13	33.94	33.30	31.50	26.39
1996-1997	31.75	31.40	30.50	30.00	29.06	29.13	28.56	27.85					
GREAT NORTHERN - Western Nebraska/Eastern Wyoming													
1992-1993	22.80	23.44	23.13	23.13	21.88	19.38	18.10	17.88	18.69	19.25	21.06	24.63	21.11
1993-1994	28.42	35.00	35.75	35.50	35.25	34.13	33.60	33.00	32.50	32.40	32.13	31.20	33.24
1994-1995	29.56	32.56	36.05	37.00	36.65	36.44	37.78	41.31	42.05	42.50	NE	N.E.	37.19
1995-1996	39.81	44.00	42.25	43.00	40.25	39.50	37.13	36.75	36.50	36.50	34.95	32.00	38.55
1996-1997	29.84	28.95	27.19	26.58	25.94	26.19	25.81	25.85					
SMALL RED - Southern Idaho													
1992-1993	29.83	30.75	31.13	30.50	30.50	30.06	29.15	28.38	27.88	29.94	30.67	31.50	30.02
1993-1994	29.50	31.13	31.42	31.17	30.63	30.50	29.20	28.13	27.25	27.25	27.69	28.10	29.33
1994-1995	28.83	29.00	29.40	29.17	28.85	28.25	27.63	27.75	27.50	27.44	27.25	27.20	28.19
1995-1996	26.94	26.55	26.63	26.50	27.00	26.75	26.44	28.25	31.50	32.50	33.40	34.00	28.87
1996-1997	34.63	36.60	38.44	38.75	40.38	40.19	40.19	40.35					
PINK - Southern Idaho													
1992-1993	22.75	28.58	29.56	29.50	29.25	28.25	27.85	26.38	25.38	24.85	24.50	25.40	26.84
1993-1994	26.83	30.17	31.30	31.00	30.42	30.00	28.05	27.06	26.94	27.10	26.69	26.81	28.53
1994-1995	26.25	26.50	26.65	26.33	26.50	26.19	26.00	26.00	26.20	26.33	25.75	26.00	26.23
1995-1996	24.88	25.80	25.75	25.75	25.95	25.88	25.88	28.20	31.50	32.25	32.95	33.50	28.19
1996-1997	33.75	33.50	33.63	33.25	32.94	32.50	31.88	30.95					

NE Not Established

Monthly Average Prices Per Cwt. by Crop Year fob Bid to Growers

Year	Sep	Oct	Nov	Dec	Jan	Feb	Mar	Apr	May	June	Jul	Aug	Avg
PINTO - Northern Colorado													
1992-1993	18.30	19.00	20.00	20.00	20.00	19.88	18.60	17.75	17.00	17.00	17.00	19.50	18.67
1993-1994	22.75	29.00	29.50	29.00	29.63	30.00	28.20	28.00	28.13	27.75	23.00	20.70	27.14
1994-1995	16.38	17.00	17.00	16.00	15.10	15.00	15.75	16.00	16.60	17.00	16.75	15.90	16.21
1995-1996	16.25	16.60	15.00	15.00	15.20	16.50	18.00	21.80	26.88	27.00	25.80	24.75	19.90
1996-1997	25.75	22.80	22.50	21.33	20.25	20.00	19.25	18.50					
PINTO - North Dakota/Minnesota													
1992-1993	16.70	17.13	18.88	19.25	19.25	18.00	16.80	15.47	14.00	13.60	13.50	13.75	16.36
1993-1994	21.00	28.25	28.00	27.00	27.75	29.00	27.00	N.Q.	27.75	27.25	21.00	19.40	25.76
1994-1995	15.38	15.38	15.05	13.83	13.30	14.31	15.50	15.63	15.90	16.00	15.88	15.80	15.16
1995-1996	14.13	15.10	14.00	14.00	14.10	15.38	16.44	20.00	24.88	25.00	25.00	24.63	18.56
1996-1997	22.88	22.20	20.50	20.33	19.25	18.50	17.88	16.50					
PINTO - Idaho													
1992-1993	19.40	20.25	20.00	20.13	21.00	19.88	18.80	18.00	17.13	16.90	16.63	18.70	18.90
1993-1994	21.75	28.50	29.30	29.00	29.50	30.00	28.00	28.00	28.00	28.25	22.00	21.20	26.96
1994-1995	18.00	18.00	18.00	17.00	16.00	16.00	16.88	16.88	17.00	17.50	18.00	18.00	17.27
1995-1996	17.13	17.00	16.50	16.00	16.20	17.50	18.50	22.00	26.75	27.00	27.00	25.00	20.55
1996-1997	25.00	25.20	23.00	22.83	23.00	23.00	21.13	20.50					
GREAT NORTHERN - Western Nebraska/Eastern Wyoming													
1992-1993	16.40	18.00	18.00	18.00	17.50	15.75	13.70	13.50	13.50	13.65	14.44	15.80	15.69
1993-1994	18.50	20.50	22.00	22.00	22.83	23.00	23.00	23.00	23.00	23.00	23.25	22.60	22.21
1994-1995	20.88	23.00	25.80	26.83	27.00	27.00	27.25	30.00	30.00	30.00	30.00	30.00	27.31
1995-1996	27.75	30.00	29.00	29.00	29.00	29.00	26.00	25.70	26.00	26.00	24.80	24.00	27.19
1996-1997	22.75	19.60	18.88	18.17	17.13	17.00	18.00	18.40					
SMALL RED - Southern Idaho													
1992-1993	22.20	23.00	23.00	23.00	23.00	22.25	22.00	22.00	22.00	22.00	22.25	23.00	22.48
1993-1994	22.13	22.75	23.00	23.00	23.00	23.00	21.50	21.25	21.00	21.00	20.88	21.00	21.96
1994-1995	21.00	21.38	22.00	22.00	21.80	21.50	21.63	21.50	21.20	21.00	21.50	21.50	21.50
1995-1996	19.63	19.90	19.75	19.50	19.40	19.38	19.75	20.30	22.88	24.63	25.00	25.00	21.26
1996-1997	25.50	26.00	26.38	27.50	28.00	29.50	30.50	29.40					
PINK - Southern Idaho													
1992-1993	19.50	22.50	23.00	22.00	23.00	21.50	20.70	19.75	18.50	17.80	16.75	18.30	20.28
1993-1994	19.75	22.00	22.00	22.17	22.25	21.88	19.00	19.00	19.00	19.00	19.00	19.00	20.34
1994-1995	19.00	19.00	19.00	18.17	18.00	18.00	18.00	18.13	18.20	18.00	18.00	18.00	18.29
1995-1996	18.00	18.00	18.00	18.00	18.00	18.38	18.75	20.10	22.88	23.88	24.00	24.25	20.19
1996-1997	25.33	25.60	26.00	26.00	26.00	26.00	26.00	25.10					

NQ - No Quote

Monthly Average Prices Per Cwt. by Crop Year fob Dealer

Year	Sep	Oct	Nov	Dec	Jan	Feb	Mar	Apr	May	June	Jul	Aug	Avg
BLACK - Michigan													
1992-1993	22.55	23.81	25.06	24.75	25.25	24.88	24.00	22.75	22.44	23.44	24.50	27.66	24.26
1993-1994	22.25	24.24	27.45	27.00	26.33	25.00	24.60	25.31	31.75	33.28	34.13	34.25	27.97
1994-1995	27.31	33.25	34.03	33.75	33.70	33.97	34.25	33.50	33.10	32.88	32.00	29.30	32.59
1995-1996	20.25	20.20	19.19	19.00	18.55	19.00	20.13	22.45	29.88	28.81	28.85	28.00	22.86
1996-1997	27.50	27.05	26.81	26.50	26.81	28.25	28.19	28.25					
BLACK - New York													
1992-1993	22.63	24.00	26.00	25.50	25.50	25.67	24.67	24.00	24.00	N.A.	24.25	26.67	24.81
1993-1994	22.08	24.63	26.70	26.50	26.00	24.63	25.25	25.00	30.75	33.00	34.50	N.A.	27.19
1994-1995	27.75	32.00	33.15	33.58	32.80	32.75	33.69	33.13	32.90	33.00	32.50	30.20	32.29
1995-1996	20.88	20.65	20.50	20.50	19.70	20.00	20.25	22.65	29.56	28.75	28.85	27.94	23.35
1996-1997	27.50	27.35	27.13	26.92	27.31	27.72	27.94	27.76					
CRANBERRY - Michigan													
1992-1993	37.50	41.08	50.41	52.25	51.50	N.A.	N.A.	31.75	32.50	N.A.	32.67	29.75	39.93
1993-1994	29.04	32.81	30.95	30.63	28.50	27.42	25.75	25.92	27.44	31.50	35.00	34.83	29.98
1994-1995	35.38	34.44	34.48	34.83	34.75	34.69	34.50	34.38	34.40	34.50	34.50	34.50	34.61
1995-1996	30.00	29.50	29.81	29.92	29.88	29.56	29.38	29.50	30.75	31.38	31.50	N.A.	30.11
1996-1997	38.88	39.30	38.13	36.58	34.59	33.19	32.25	31.50					
LIGHT RED KIDNEY - Michigan													
1992-1993	35.50	37.13	37.81	37.88	37.17	37.38	36.13	35.17	33.75	32.25	31.25	30.94	35.20
1993-1994	28.33	30.25	31.20	31.00	31.50	30.83	31.05	30.50	30.83	30.63	30.75	30.00	30.57
1994-1995	29.50	28.84	28.80	28.92	28.50	28.94	29.06	29.00	28.40	28.50	28.00	28.80	28.77
1995-1996	27.63	27.70	27.88	27.33	27.00	27.00	27.19	27.50	29.56	32.25	33.70	33.50	29.02
1996-1995	36.00	39.00	39.00	39.00	39.13	39.44	39.13	38.80					
LIGHT RED KIDNEY - New York													
1992-1993	29.00	36.83	37.88	38.06	36.88	36.67	N.A.	N.A.	33.50	N.A.	31.33	30.00	34.46
1993-1994	28.17	29.88	30.60	30.50	31.00	30.33	30.50	30.25	29.25	28.25	N.A.	N.A.	29.87
1994-1995	28.00	28.17	27.40	27.75	27.75	27.31	27.00	27.00	27.00	27.13	27.25	28.00	27.48
1995-1996	27.50	27.50	27.38	27.46	27.50	27.06	26.25	27.15	29.63	32.25	33.45	33.88	28.92
1996-1997	36.88	39.00	39.22	39.33	39.38	39.50	39.25	38.35					
LIGHT RED KIDNEY - Colorado													
1992-1993	36.88	37.44	37.94	38.25	38.50	37.69	35.50	35.13	34.17	33.67	34.00	33.83	36.08
1993-1994	30.17	33.17	34.00	33.50	34.50	34.50	34.10	34.00	34.06	34.25	34.18	31.81	33.52
1994-1995	29.88	30.44	29.80	29.75	29.20	29.50	29.25	28.63	28.95	28.50	28.75	29.00	29.30
1995-1996	28.38	28.95	28.75	28.92	28.55	28.13	27.75	29.35	31.88	33.00	33.55	33.88	30.09
1996-1997	37.00	39.40	39.94	40.08	40.00	40.00	40.00	40.00					

NA - Not Available

NE - Not Established

Monthly Average Prices Per Cwt. by Crop Year fob Bid to Growers

Year	Sep	Oct	Nov	Dec	Jan	Feb	Mar	Apr	May	June	Jul	Aug	Avg
BLACK - Michigan													
1992-1993	17.55	20.00	20.13	20.25	20.50	20.50	19.90	19.50	18.56	18.35	18.50	18.60	19.35
1993-1994	16.25	18.75	21.50	22.00	22.00	21.75	21.00	21.13	23.50	24.00	24.00	N.A.	21.44
1994-1995	22.00	28.13	29.30	29.50	29.80	30.00	30.00	30.00	30.00	30.00	29.50	29.00	29.02
1995-1996	15.38	15.30	14.63	13.83	13.40	13.88	14.00	15.70	22.63	21.88	23.60	23.25	17.29
1996-1997	23.38	22.90	22.50	22.50	21.25	22.36	22.88	22.90					
BLACK - New York													
1992-1993	17.56	17.75	18.00	18.00	18.00	18.00	18.00	18.00	18.00	18.00	18.75	19.13	18.10
1993-1994	15.25	16.00	17.00	18.00	18.00	17.50	17.00	17.00	18.50	19.67	N.A.	N.A.	17.39
1994-1995	18.88	21.63	22.50	23.00	23.80	24.50	24.00	24.00	24.50	24.00	24.00	24.00	23.23
1995-1996	16.00	15.80	15.13	15.00	14.10	14.00	14.00	15.10	19.75	20.00	20.20	20.50	16.63
1996-1997	20.75	20.90	20.13	20.00	20.00	20.00	20.00	20.00					
CRANBERRY - Michigan													
1992-1993	28.67	N.A.	N.A.	N.A.	N.A.	N.A.	N.A.	N.A.	N.A.	N.A.	N.A.	N.A.	28.67
1993-1994	21.50	25.00	24.20	24.25	N.A.	22.00	N.A.	N.A.	22.83	N.A.	N.A.	N.A.	23.30
1994-1995	28.88	28.88	28.60	29.00	29.00	29.00	29.00	29.00	29.00	28.50	28.00	28.00	28.74
1995-1996	24.25	23.80	24.00	24.00	24.00	24.00	23.75	24.00	24.38	24.00	24.00	N.A.	24.00
1996-1997	32.81	33.30	31.13	29.33	29.00	27.38	25.63	25.50					
LIGHT RED KIDNEY - Michigan													
1992-1993	27.38	30.13	30.00	31.00	31.00	31.00	30.00	27.25	27.00	27.00	N.A.	N.A.	29.18
1993-1994	21.75	23.75	24.20	24.50	24.13	23.50	23.60	24.00	24.00	N.A.	N.A.	N.A.	23.71
1994-1995	23.88	23.75	23.40	23.50	23.50	23.50	23.25	23.00	23.40	23.63	22.50	22.30	23.30
1995-1996	22.25	22.60	22.38	22.00	21.70	21.50	21.50	22.10	22.25	22.50	23.00	23.00	22.23
1996-1997	29.63	32.50	31.25	32.17	32.00	32.13	31.13	31.00					
LIGHT RED KIDNEY - New York													
1992-1993	22.20	26.25	28.50	29.00	29.00	29.00	29.00	29.00	29.00	28.20	28.00	N.A.	27.92
1993-1994	20.25	21.00	21.00	21.00	21.00	21.00	21.00	21.00	21.00	21.00	N.A.	N.A.	20.93
1994-1995	21.13	19.50	18.20	18.00	18.00	18.25	18.00	18.00	18.00	18.00	22.00	22.00	19.09
1995-1996	20.50	20.50	20.25	20.00	19.70	19.00	19.00	19.40	20.88	21.00	21.60	22.25	20.34
1996-1997	28.25	31.00	31.38	31.00	31.00	31.13	31.50	31.40					
LIGHT RED KIDNEY - Colorado													
1992-1993	27.55	30.25	30.00	30.00	30.00	30.06	30.00	30.00	30.00	B.I.	B.I.	B.I.	29.73
1993-1994	23.17	24.13	25.50	26.00	26.00	26.00	26.00	26.00	26.00	26.00	B.I.	B.I.	25.48
1994-1995	24.00	23.13	23.00	23.00	23.00	23.38	22.63	22.50	21.70	21.50	21.63	22.00	22.62
1995-1996	22.63	22.80	22.00	21.33	20.00	20.38	20.50	23.05	25.75	26.00	26.00	26.00	23.04
1996-1997	29.63	31.70	32.00	32.00	31.88	31.75	32.00	32.00					

NA - Not available BI - Bought in

Monthly Average Prices Per Cwt. by Crop Year for Dealer

Year	Sep	Oct	Nov	Dec	Jan	Feb	Mar	Apr	May	June	Jul	Aug	Avg
SMALL WHITE - Idaho/Washington													
1992-1993	29.67	33.00	31.83	31.00	31.00	30.00	28.25	N.E.	N.E.	N.E.	24.50	25.38	29.40
1993-1994	26.00	29.50	29.06	29.33	29.31	29.00	28.75	27.00	25.50	27.00	31.42	32.75	28.72
1994-1995	32.75	33.19	34.44	34.50	34.80	35.38	35.13	34.92	35.00	35.13	34.38	33.00	34.39
1995-1996	28.00	N.E.	28.00	28.00	29.00	N.E.	N.E.	N.E.	31.50	N.E.	N.E.	N.E.	28.90
1996-1997	N.E.	36.92	38.75	N.E.	40.25	N.E.	N.E.	N.E.					
PEA BEAN - Michigan No. 1's													
1992-1993	25.38	25.67	25.81	24.31	23.50	21.25	20.33	19.19	18.53	18.05	18.38	19.68	21.67
1993-1994	20.06	21.31	21.75	22.33	22.78	22.56	22.25	21.84	22.44	24.33	31.28	31.85	23.73
1994-1995	31.25	32.19	32.35	32.00	31.10	31.94	32.50	32.56	32.45	32.25	30.63	27.60	31.45
1995-1996	21.00	21.50	21.06	21.00	22.25	22.75	22.75	23.90	28.44	27.44	28.05	26.44	23.88
1996-1997	27.50	26.70	24.81	23.67	23.25	23.25	22.63	22.45					
PEA BEAN - North Dakota/Minnesota													
1992-1993	23.00	23.75	24.17	23.50	21.50	19.50	16.83	17.50	16.81	16.96	17.00	19.25	20.15
1993-1994	18.25	20.13	20.38	20.75	21.63	21.94	21.00	21.31	20.04	22.67	27.25	N.E.	21.40
1994-1995	30.25	31.25	31.15	30.92	30.30	30.56	31.13	31.19	31.60	31.50	29.75	28.50	30.68
1995-1996	19.88	19.85	19.09	18.33	20.70	21.44	21.63	23.10	27.81	26.44	26.95	25.50	22.56
1996-1997	26.31	25.30	22.88	21.67	22.00	23.25	21.08	20.55					
DARK RED KIDNEY - Michigan													
1992-1993	37.50	41.50	42.50	42.00	41.63	41.13	39.75	39.81	38.75	37.00	34.19	35.58	39.28
1993-1994	36.33	38.94	39.55	38.25	37.75	38.63	35.84	34.94	33.75	33.65	32.81	30.67	35.76
1994-1995	25.81	26.47	26.95	26.67	25.60	25.56	25.88	25.63	26.65	27.75	29.38	30.63	26.92
1995-1996	30.81	32.00	32.00	31.50	30.80	30.00	30.13	31.05	33.75	34.13	33.75	35.06	32.08
1996-1997	36.50	36.20	34.58	33.50	33.00	32.63	31.38	29.20					
DARK RED KIDNEY - Minnesota/Wisconsin													
1992-1993	38.63	41.25	42.00	42.00	41.62	41.58	38.75	38.00	37.25	36.75	N.E.	35.94	39.43
1993-1994	36.25	40.25	40.25	38.17	38.00	37.17	35.96	33.63	33.50	33.45	32.44	27.33	35.53
1994-1995	25.81	26.34	26.60	26.08	26.00	26.00	26.08	27.00	28.00	29.25	29.75	30.75	27.30
1995-1996	31.00	33.50	32.75	32.25	32.25	32.00	N.E.	N.E.	36.00	36.50	35.90	36.00	33.82
1996-1997	38.00	36.25	34.83	34.50	33.06	31.92	30.00	28.13					

NE - Not Established

Monthly Average Prices Per Cwt. by Crop Year fob Grower

Year	Sep	Oct	Nov	Dec	Jan	Feb	Mar	Apr	May	June	Jul	Aug	Avg
SMALL WHITE - Idaho/Washington													
1992-1993	24.80	26.00	26.00	25.00	24.00	22.50	28.25	20.00	19.00	18.00	17.63	18.00	22.43
1993-1994	20.38	21.25	21.10	21.00	21.00	21.00	21.50	21.13	21.00	21.00	23.50	25.50	21.61
1994-1995	27.00	27.25	26.45	26.50	26.50	26.50	26.50	27.63	26.80	28.38	26.63	24.75	26.74
1995-1996	23.00	23.00	23.00	23.00	23.10	23.25	23.50	24.20	24.88	25.25	26.70	27.50	24.20
1996-1997	26.67	27.40	28.25	28.67	28.88	30.13	30.00	29.40					
PEA BEAN - Michigan No. 1's													
1992-1993	22.00	21.75	21.63	21.25	20.00	17.50	16.60	15.66	15.13	14.70	14.63	14.95	17.98
1993-1994	15.75	16.44	17.35	18.17	18.75	18.44	18.30	18.50	18.63	19.80	25.38	27.60	19.43
1994-1995	27.56	29.50	29.65	29.83	29.15	28.25	29.00	29.25	29.25	29.13	27.38	23.30	28.44
1995-1996	16.69	16.55	17.00	17.00	17.80	17.75	18.00	18.80	21.86	21.88	24.00	23.25	19.22
1996-1997	23.50	22.70	20.38	18.83	18.63	18.36	18.13	16.70					
PEA BEAN - North Dakota/Minnesota													
1992-1993	18.80	18.36	18.88	18.88	17.88	15.50	15.00	13.56	13.25	13.05	12.75	13.10	15.76
1993-1994	14.50	15.06	16.40	16.50	16.81	17.00	17.00	17.00	17.25	18.10	N.E.	26.00	17.42
1994-1995	25.50	27.25	27.55	27.75	27.25	26.50	27.44	27.75	27.75	27.50	25.88	24.00	26.84
1995-1996	14.88	14.70	14.50	15.00	15.80	17.25	18.00	18.80	21.75	21.50	22.50	22.50	18.10
1996-1997	22.31	20.70	18.88	17.50	17.50	17.50	17.13	15.50					
DARK RED KIDNEY - Michigan													
1992-1993	31.67	33.75	33.13	33.00	32.00	31.00	31.00	B.I.	B.I.	B.I.	B.I.	B.I.	32.22
1993-1994	30.25	31.25	32.00	31.17	30.75	30.00	N.E.	28.67	N.E.	27.63	N.E.	N.E.	30.22
1994-1995	20.75	21.13	20.80	20.50	19.70	19.00	18.50	18.88	19.50	19.75	20.63	22.00	20.10
1995-1996	25.13	26.10	26.25	25.50	25.00	25.00	25.00	25.00	25.00	25.50	26.80	27.50	25.65
1996-1997	28.63	28.90	29.38	29.00	28.13	25.88	25.50	24.40					
DARK RED KIDNEY - Minnesota/Wisconsin													
1992-1993	31.67	33.75	34.00	34.88	34.88	34.50	N.E.	N.E.	N.E.	N.E.	N.E.	N.E.	33.95
1993-1994	31.00	33.12	34.30	34.00	31.50	30.00	W	W	28.00	27.75	N.E.	N.E.	31.21
1994-1995	20.50	19.88	19.50	19.50	19.40	19.19	19.19	18.88	19.40	21.38	22.00	22.50	20.11
1995-1996	26.56	27.85	26.88	26.50	26.25	26.38	26.44	26.60	28.38	29.75	30.00	30.25	27.65
1996-1997	31.00	29.70	29.25	29.67	28.13	25.38	25.50	22.67					

W - Withdrawn N.E. - Not Established B.I. - Bought In

Monthly Average Prices Per Cwt. by Crop Year fob Dealer

Year	Sep	Oct	Nov	Dec	Jan	Feb	Mar	Apr	May	June	Jul	Aug	Avg
AUSTRIAN WINTER PEA - Idaho/Washington													
1992-1993	14.25	14.25	14.13	14.25	14.50	13.42	12.98	12.63	12.63	11.75	11.75	11.40	13.16
1993-1994	11.50	11.25	11.33	11.33	11.13	11.38	N.E.	N.E.	N.E.	13.25	N.E.	17.50	12.33
1994-1995	16.75	16.13	16.00	16.08	16.00	16.21	N.E.	16.29	16.13	16.22	16.25	16.25	16.21
1995-1996	16.28	16.25	16.13	16.25	16.25	16.25	16.28	16.25	16.69	17.44	17.38	17.50	16.58
1996-1997	17.83	18.56	17.78	17.50	17.63	17.92	17.97	18.46					
LENTIL - Idaho/Washington													
1992-1993	23.97	24.19	25.13	25.23	25.00	22.29	19.65	18.06	18.81	19.25	19.69	18.65	21.66
1993-1994	20.81	20.00	20.58	20.25	18.68	18.92	18.88	17.50	17.15	16.78	16.31	16.73	18.55
1994-1995	16.16	16.73	16.31	16.38	16.60	16.28	16.28	16.53	16.70	16.70	18.88	19.97	16.96
1995-1996	19.66	18.78	18.88	18.67	18.60	18.41	18.25	18.35	20.22	22.13	22.85	23.50	19.86
1996-1997	23.03	20.88	21.28	20.71	20.31	19.25	20.50	19.95					
GREEN SPLIT - Idaho/Washington													
1992-1993	13.91	14.53	14.90	14.75	14.66	14.44	14.28	14.06	14.19	14.20	14.03	13.56	14.29
1993-1994	13.34	13.06	12.78	12.67	12.48	12.28	12.38	12.31	12.48	12.59	12.81	13.16	12.70
1994-1995	13.31	14.53	16.38	17.04	18.40	19.50	20.44	20.63	20.60	20.56	18.13	15.06	17.88
1995-1996	15.06	14.85	14.81	14.67	14.28	14.44	14.91	15.20	15.69	16.88	17.78	18.41	15.58
1996-1997	18.65	18.00	17.47	17.29	17.66	19.27	20.59	20.15					
WHOLE GREEN PEA - Idaho/Washington													
1992-1993	11.13	11.84	12.13	11.71	11.64	11.54	11.30	11.21	11.28	11.33	11.06	10.29	11.37
1993-1994	10.02	9.75	9.50	9.54	9.25	9.22	9.31	9.35	9.63	10.09	10.38	10.80	9.74
1994-1995	10.92	12.05	13.53	14.54	15.53	16.63	17.31	17.63	17.80	17.23	15.30	12.41	15.07
1995-1996	12.16	11.78	11.66	11.42	11.35	11.72	12.41	12.58	12.81	13.88	14.53	15.53	12.66
1996-1997	15.60	14.89	14.38	14.04	14.47	16.46	17.50	16.98					
WHOLE YELLOW PEA - Idaho/Washington													
1992-1993	N.E.	10.50	11.08	N.E.	10.44	10.38	10.44	N.E.	10.16	N.E.	11.50	10.75	10.66
1993-1994	11.94	11.78	12.08	12.46	12.33	12.19	12.38	N.E.	9.25	11.56	11.25	11.10	11.67
1994-1995	10.88	12.10	13.03	13.50	13.50	13.31	13.31	13.56	14.25	14.59	12.75	12.69	13.12
1995-1996	12.47	12.50	12.69	12.58	12.50	13.41	12.75	12.75	12.81	13.75	14.69	15.00	13.16
1996-1997	15.40	14.69	14.38	13.96	14.47	16.46	17.25	16.40					
YELLOW SPLIT - Idaho/Washington													
1992-1993	13.34	13.66	13.88	13.88	13.84	13.75	13.50	13.50	13.63	13.78	14.38	14.25	13.78
1993-1994	15.19	15.31	15.43	15.50	15.48	15.47	15.47	15.13	15.08	14.91	14.66	14.33	15.16
1994-1995	14.25	14.70	15.94	15.96	16.15	15.94	16.31	16.38	16.90	17.31	16.66	16.69	16.02
1995-1996	15.56	15.75	15.75	15.75	15.55	15.44	15.59	15.75	15.86	16.88	17.69	18.00	16.13
1996-1997	18.33	17.88	17.44	17.29	17.86	19.19	20.25	19.00					

NE - Not Established

Monthly Average Prices Per Cwt. by Crop Year fob Bid to Grower

Year	Sep	Oct	Nov	Dec	Jan	Feb	Mar	Apr	May	June	Jul	Aug	Avg
AUSTRIAN WINTER PEA - Idaho/Washington													
1992-1993	10.31	10.56	10.65	10.67	10.38	N.E.	N.E.	N.E.	N.E.	N.E.	N.E.	8.65	10.20
1993-1994	8.81	8.69	8.73	8.75	8.75	8.97	9.75	10.00	10.00	10.00	10.00	10.40	9.40
1994-1995	12.00	12.00	12.00	12.00	12.00	12.00	12.00	12.00	12.00	12.00	12.20	12.25	12.04
1995-1996	12.13	12.10	12.25	12.08	12.00	12.00	12.00	12.00	12.00	12.00	12.10	13.00	12.14
1996-1997	13.00	13.00	12.88	12.83	13.00	13.00	13.19	13.50					
LENTIL - Idaho/Washington													
1992-1993	19.91	20.56	21.70	21.83	21.92	18.81	16.13	14.84	15.81	15.95	16.06	15.00	18.21
1993-1994	17.50	16.56	16.35	15.17	14.88	15.25	15.44	14.50	13.85	13.38	13.00	13.33	14.93
1994-1995	12.88	13.65	13.38	13.33	13.30	13.22	13.31	13.56	13.83	13.56	15.60	16.81	13.87
1995-1996	16.66	15.78	15.75	15.71	15.50	15.41	15.44	15.68	16.91	18.88	19.80	20.59	16.84
1996-1997	19.75	18.81	18.25	17.33	17.13	17.38	17.31	17.15					
WHOLE GREEN PEA - Idaho/Washington													
1992-1993	8.50	9.09	9.08	8.88	8.84	9.13	9.00	8.78	8.88	8.78	8.06	7.38	8.70
1993-1994	7.03	6.97	6.88	6.67	6.48	6.63	6.97	7.06	7.28	7.69	7.97	8.25	7.16
1994-1995	8.28	8.98	10.16	11.33	12.13	12.75	13.38	13.44	13.40	13.00	9.43	9.28	11.30
1995-1996	8.91	8.40	8.31	8.25	8.45	9.00	9.56	9.78	10.03	10.91	11.55	12.50	9.64
1996-1997	12.20	11.19	10.97	11.00	11.44	12.58	14.38	13.80					
WHOLE YELLOW PEA - Idaho/Washington													
1992-1993	7.56	7.75	7.70	7.75	7.69	7.63	7.48	7.25	7.28	7.43	7.78	7.90	7.60
1993-1994	8.47	8.66	8.73	8.75	8.73	8.75	8.63	8.50	8.30	8.25	8.13	8.10	8.50
1994-1995	8.25	8.85	9.56	9.88	9.75	9.66	9.63	9.66	9.85	9.63	9.48	9.59	9.48
1995-1996	9.22	8.78	8.91	8.75	8.58	8.81	9.00	9.23	9.53	10.41	11.15	12.06	9.54
1996-1997	12.18	11.00	10.91	11.00	11.44	12.58	13.63	12.65					

NE - Not Established

Monthly Average Prices Per Cwt. by Crop Year fob Dealer

Year	Sep	Oct	Nov	Dec	Jan	Feb	Mar	Apr	May	June	Jul	Aug	Avg
LIGHT RED KIDNEY - California													
1992-1993	31.38	36.94	36.38	37.00	36.56	35.63	34.79	33.63	32.81	32.55	31.88	31.88	34.29
1993-1994	32.25	N.A.	34.63	33.83	34.00	33.83	32.44	34.00	32.81	33.03	32.63	31.50	33.18
1994-1995	31.33	31.19	32.20	31.50	31.80	31.75	30.92	30.75	30.50	30.31	30.16	30.05	31.04
1995-1996	29.66	30.00	30.00	30.00	29.75	29.75	29.69	30.55	32.84	35.50	N.E.	35.00	31.16
1996-1997	35.00	40.00	40.25	42.75	42.00	42.00	42.00	41.05					
BABY LIMA - California													
1992-1993	20.78	20.75	22.88	23.75	23.44	23.00	22.44	21.50	20.94	21.05	25.00	26.88	22.70
1993-1994	29.75	33.19	36.13	36.25	35.50	34.97	34.98	34.56	34.25	35.00	35.50	35.75	34.65
1994-1995	34.31	32.81	32.95	33.00	33.90	34.00	33.94	34.00	34.00	34.00	33.75	34.95	33.80
1995-1996	35.81	36.85	36.75	36.92	38.50	41.88	41.75	41.45	41.38	41.56	41.50	41.50	39.65
1996-1997	41.50	42.50	43.56	46.00	47.50	47.50	47.50	46.75					
LARGE LIMA - California													
1992-1993	26.25	26.13	26.25	26.33	26.38	35.63	25.22	25.50	25.31	25.75	29.56	31.50	26.65
1993-1994	32.50	42.38	45.33	45.08	44.75	43.69	43.10	41.31	41.06	40.88	41.25	41.10	41.87
1994-1995	41.38	43.38	43.95	44.25	44.80	44.75	44.63	44.75	45.05	45.25	46.16	47.50	44.65
1995-1996	47.94	48.35	49.19	49.58	49.80	49.75	49.75	49.78	50.53	51.56	51.70	51.50	49.95
1996-1997	51.31	52.65	53.94	54.92	55.00	56.56	58.50	60.40					
BLACKEYE - California													
1992-1993	21.20	22.63	26.69	26.67	26.50	26.25	26.28	26.19	26.19	26.00	26.75	28.19	25.80
1993-1994	32.75	35.25	36.81	37.67	44.50	44.50	45.25	46.92	47.31	48.45	50.50	N.A.	42.72
1994-1995	36.00	33.25	35.55	41.67	42.20	42.06	42.06	41.88	42.00	42.00	43.00	41.30	40.25
1995-1996	33.83	30.10	28.00	27.16	26.25	25.13	25.13	27.60	31.56	31.88	31.60	31.55	29.14
1996-1997	33.00	34.00	34.38	34.50	34.38	33.69	33.31	31.00					
PINK - California													
1992-1993	N.A.	N.A.	N.A.	N.A.	N.A.	N.A.	N.A.	26.25	26.25	25.63	25.21	N.A.	25.84
1993-1994	N.A.	N.A.	N.A.	31.00	N.A.	N.A.	N.A.	N.A.	27.88	30.00	30.00	N.A.	29.72
1994-1995	28.00	27.00	N.A.	28.00	27.33	N.A.	N.A.	N.A.	26.33	28.00	N.A.	N.A.	27.42
1995-1996	N.A.	N.A.	N.A.	26.00	26.75	25.50	N.A.	27.83	31.13	N.A.	N.A.	N.A.	27.41
1996-1997	N.A.	35.00	34.75	34.13	N.A.	34.00	N.A.	32.25					
GARBANZO - California													
1992-1993	40.94	42.67	42.50	41.25	41.00	44.50	43.93	37.50	40.13	N.A.	N.A.	N.A.	41.60
1993-1994	N.A.	N.A.	N.A.	N.A.	34.38	34.00	33.75	30.75	N.A.	N.A.	N.A.	29.31	32.44
1994-1995	32.09	41.50	44.25	45.00	45.00	44.63	42.50	42.75	43.25	N.A.	N.A.	N.A.	42.33
1995-1996	49.00	51.30	56.25	59.00	56.25	52.38	51.25	50.00	N.E.	N.E.	35.00	34.67	
1996-1997	33.00	32.75	32.08	32.00	33.00	33.50	33.50	31.00					

NQ - No Quote NE - Not Established NA - Not Available

Dry Edible Beans, U.S. Production by Commercial Class (1,000 Cwt.)

Class	1992	1993	1994	1995	1996*	5 Year Average
Pea Bean, (Navy)	5,018	5,283	5,291	7,319	5,846	5,751
Great Northern	1,416	858	1,645	2,176	2,220	1,863
Small White	168	131	164	163	113	147
Pinto	9,172	8,059	12,741	11,349	11,912	10,647
Red Kidney	1,964	2,049	2,808	2,241	1,846	2,202
Pink	609	791	815	652	535	680
Small Red	607	784	773	745	405	663
Cranberry	380	558	419	575	501	487
Black Turtle Soup	758	1,270	1,462	2,305	1,368	1,433
Large Lima (Calif.)	615	350	429	415	395	441
Baby Lima (Calif.)	498	351	609	510	510	496
Blackeye (Calif.)	577	622	842	1,091	576	742
Garbanzo (Calif.)	264	301	328	473	507	375
Other	571	506	702	798	520	479
Total	22,615	21,913	29,028	30,812	27,354	26,206

Source: USDA, NASS. *Subject to revision

Canadian Crop Production

PROVINCE	PEA BEANS								COLORED BEANS							
	HARVESTED ACRES (1,000)				PRODUCTION (1,000)				HARVESTED ACRES (1,000)				PRODUCTION (1,000)			
	1993	1994	1995	1996	1993	1994	1995	1996	1993	1994	1995	1996	1993	1994	1995	1996
Alberta					95.0	350.0	520.0	441.0	30.0	25.0	30.0	20.0	450.0	800.0	600.0	400.0
Manitoba	15.0	20.0	35.0	35.0					18.0	25.0	30.0	20.0	120.0	400.0	490.0	270.0
Ontario	99.0	85.0	115.0	75.0	1600.0	1500.0	2000.0	900.0	30.0	35.0	35.0	30.0	500.0	600.0	600.0	420.0
Quebec	1.5	1.2	2.0	1.5	19.8	19.8	33.1	28.7	5.9	5.2	8.9	7.4	99.2	95.0	176.4	137.0
TOTAL	115.5	106.2	152.0	111.5	1714.8	1869.8	2553.1	1369.7	83.9	90.2	103.9	77.4	1169.2	1895.0	1866.4	1227.0
PROVINCE	DRY PEAS								LENTILS							
	HARVESTED ACRES (1,000)				PRODUCTION (1,000)				HARVESTED ACRES (1,000)				PRODUCTION (1,000)			
	1993	1994	1995	1996	1993	1994	1995	1996	1993	1994	1995	1996	1993	1994	1995	1996
Alberta	280	390	445	340	11000	13750	15150	78540	30	40	38	25	20,700	43,000	47,500	18,500
British Columbia			30	5			1000	300								
Manitoba	150	200	180	145	3150	6200	5400	3019	80	115	50		53,200	110,000	62,900	
Saskatchewan	725	1100	1300	880	21500	33000	31900	54912	700	800	720	710	695,000	840,000	842,000	846,320
TOTAL	1155	1690	1955	1370	35650	52950	53450	136771	810	955	808	735	768,900	993,000	952,400	864,820

Source: Statistics Canada, Field Crop Reports

Dry Edible Beans, Production by Commercial Class (1,000 cwt)

Small Red

State	1992	1993	1994	1995	1996
ID	327	460	508	335	263
MI				160	33
WA	280	324	265	250	107
Total	607	784	773	745	405

Small White

State	1992	1993	1994	1995	1996
ID	71	46	64	62	57
MI	24	20	10	15	
OR	29	34	53	36	10
WA	42	31	37	50	46
Total	166	131	164	163	113

Great Northern

State	1992	1993	1994	1995	1996
CO	27	2	14	64	21
ID	75	52	73	158	167
KS				28	37
MN				67	16
NE	1270	797	1478	1723	1817
WA				40	52
WY	44	7	80	96	110
Total	1416	858	1645	2176	2220

Pink

State	1992	1993	1994	1995	1996
CA	87	90	151	98	130
ID	407	544	462	301	167
MN				66	68
MT	6				
ND		24	87	59	96
NM	24	15	28	18	8
WA	85	118	87	110	66
Total	609	791	815	652	535

Cranberry

State	1992	1993	1994	1995	1996
CA				42	45
ID				19	24
MI	380	530	360	470	400
MN		28	59	44	32
Total	380	558	419	575	501

Baby Lima

State	1992	1993	1994	1995	1996
CA	498	351	609	510	510
Total	498	351	609	510	510

Black

State	1992	1993	1994	1995	1996
CA			34	28	17
CO		45	10	19	
ID		32	40	55	21
MI	570	970	990	1700	940
MN			43	83	59
NE		32	32	17	18
ND		38	87	298	213
NY	90	120	146	135	100
WA	26	33	80	60	
Total	158	1270	1462	2305	1368

Blackeye

State	1992	1993	1994	1995	1996
CA	510	548	771	970	520
TX	67	74	71	121	56
Total	577	622	842	1091	576

Large Lima

State	1992	1993	1994	1995	1996
CA	615	350	429	415	395
Total	615	350	429	415	395

Pea Bean (Navy)

State	1992	1993	1994	1995	1996
CO	8	17	36	14	
ID	63	73	70	139	152
KS		30	26	17	
MI	2970	4060	2750	3950	2800
MN	494	217	678	845	631
NE	13	76	66	110	95
NM	78	45	93	85	110
ND	1305	704	1524	2086	1929
OR	40	40	19	43	42
WY	47	21	29	30	87
Total	5018	5283	5291	7319	5846

Garbanzo

State	1992	1993	1994	1995	1996
CA		222	262	288	355
ID		17	9	63	37
OR		10	13	20	34
WA		52	44	102	81
Total		301	328	473	507

Dry Edible Beans, Production by Commercial Class (1000 cwt)

All Red Kidney*

State	1992	1993	1994	1995	1996
CA	469	523	388	281	275
CO	153	99	154	263	114
ID	23	30	22	38	29
MI	240	340	400	410	260
MN	505	356	897	499	634
NE	175	200	241	234	199
ND	58	45	93	43	50
NY	194	290	376	356	241
WA		21			
WI	158	145	237	117	144
Total	1917	2004	2808	2241	1946

Light Red Kidney

State	1992	1993	1994	1995	1996
CA	346	402	263	209	190
CO	153	99	154	263	114
ID	11	15	11	18	17
MI	140	180	170	200	140
MN	119	73	205	100	141
NE	175	200	241	234	199
NY	155	230	303	292	203
WA		21			
Total	1099	1220	1347	1316	1004

Dark Red Kidney

State	1992	1993	1994	1995	1996
CA	123	121	125	72	85
ID	12	15	11	20	12
MI	100	160	230	210	120
MN	386	283	692	399	493
ND	58	45	93	43	50
NY	28	60	73	64	38
WI	158	145	237	117	144
Total	865	829	1461	925	942

Prior to 1991 Light Red Kidney and Dark Red Kidney were combined

Pinto

State	1992	1993	1994	1995	1996
CO	2370	2438	2912	2158	2112
ID	576	826	1414	971	976
KS	325	330	508	410	370
MI	75	95	60	70	120
MN	326	196	295	433	336
MT	175	155	220	205	235
NE	1008	966	1719	1414	1560
NM	146	127	155	140	146
ND	3213	2103	4280	4704	5138
OR	15	39	76	40	40
TX	284	204	121	23	8
UT	40	24	24	32	10
WA	135	210	273	250	311
WY	484	346	684	499	550
Total	9172	8059	12741	11349	11912

Other

State	1992	1993	1994	1995	1996
CA	77	126	127	180	90
CO	50	8	14	40	3
ID	27	11	29	19	14
KS	12	18	26	26	37
MI	31	65	110	155	85
MN	91	39	107	18	24
NE	59	29	36	90	16
NM	6	2	7	8	
NY	32	49	63	47	36
ND	47	50	39	82	98
OR	18	51	36	69	32
TX	71	33	26	81	20
WA	33	9	54	40	47
WY	17	16	28	15	18
Total	571	506	702	870	520

Total

State	1992	1993	1994	1995	1996
CA	2445	2210	2771	2740	2337
CO	2608	2609	3140	2558	2250
ID	1584	2091	2691	2160	1907
KS	350	378	560	481	444
MI	4290	6080	4680	6930	4640
MN	1416	836	2079	2055	1800
MT	181	155	220	205	235
NE	2525	2100	3572	3588	3705
NM	254	189	283	251	264
NY	305	459	585	538	377
ND	4680	2964	6110	7182	7524
OR	121	174	197	208	158
TX	422	311	218	225	84
UT	40	24	24	32	10
WA	644	798	840	902	710
WI	158	145	237	117	144
WY	592	390	821	640	765
Total	22615	21913	29028	30812	27354

Source: USDA, NASS and Annual Crop Summary - January 1997

Dry Pea and Lentil Production Data 1992-1996*

REGULAR GREEN

Year	Acreage	Average lbs.	Production lbs.
1996	141,097	1,141	161,033,931
1995	159,249	2,255	359,127,907
1994	107,074	1,701	182,138,971
1993	144,185	2,096	302,180,620
1992	150,122	1,467	220,198,154
<i>10 Yr Avg</i>	139,826	1,845	257,932,265

LENTIL

Year	Acreage	Average lbs.	Production lbs.
1996	88,232	894	78,905,656
1995	129,395	1,250	161,804,536
1994	174,677	917	160,189,216
1993	155,838/b	1,319	205,474,833
1992	132,027/b	1,160	153,096,575
<i>10 Yr Avg</i>	124,117	1,110	137,758,278

SMALL SIEVE GREEN

Year	Acreage	Average lbs.	Production lbs.
1996	10,302	1,077	11,092,055
1995	7,839	2,645	19,327,020
1994	7,615	1,784	13,586,278
1993	3,917	2,087	8,175,949
1992	5,288	1,479	7,818,433
<i>10 Yr Avg</i>	7,032	1,909	13,426,408

YELLOW PEA

Year	Acreage	Average lbs.	Production lbs.
1996	25,957	1,034	26,833,781
1995	23,192	1,683	34,291,888
1994	9,789	1,571	15,381,632
1993	4,894	2,594	12,695,981
1992	13,392	1,534	20,542,915
<i>10 Yr Avg</i>	21,224	1,600	33,956,196

CHICKPEA

Year	Acreage	Average lbs.	Production lbs.
1996	17,760	666	11,832,620
1995	13,137	1,369	17,978,008
1994	4,165	513	2,136,373
1993	6,729	827	5,618,798
1992	6,777/a	821	5,008,250
<i>10 Yr Avg</i>	7,987	795	6,351,084

AUSTRIAN WINTER PEA

Year	Acreage	Average lbs.	Production lbs.
1996	6,893	1,406	10,531,800
1995	8,224	1,406	11,563,195
1994	4,931	1,154	5,690,485
1993	11,857	1,276	15,130,100
1992	7,808	1,050	8,198,174
<i>10 Yr Avg</i>	10,540	1,458	15,369,229

* Figures include U.S. dry pea and lentil figures as reported by member processors and WA & ID Chickpeas

** Acres Represent Harvested Acres

*a/ Adjusted Acreage
of Small Brown Lentils not included
Source: USA Dry Pea and Lentil Council*

Lentil

State	Area Planted (1,000 Acres)					Area Harvested (1,000 Acres)					Yield (Pounds)					Production (1,000 Cwt.)				
	1992	1993	1994	1995	1996	1992	1993	1994	1995	1996	1992	1993	1994	1995	1996	1992	1993	1994	1995	1996
Idaho	50.0	57.0	56.0	71.0	56.0	49.0	56.0	85.0	70.0	55.0	1,200	1,500	1,100	1,450	800	588	840	935	1,015	440
Washington	78.0	88.0	94.0	79.0	63.0	77.0	87.0	93.0	75.0	62.0	1,270	1,340	990	1,400	1,100	978	1,166	921	1,050	682
United States	128.0	145.0	180.0	150.0	119.0	126.0	143.0	178.0	145.0	117.0	1,243	1,403	1,043	1,389	969	1,566	2,006	1,856	2,065	1,122

Dry Edible Pea

State	Area Planted (1,000 Acres)					Area Harvested (1,000 Acres)					Yield (Pounds)					Production (1,000 Cwt.)				
	1992	1993	1994	1995	1996	1992	1993	1994	1995	1996	1992	1993	1994	1995	1996	1992	1993	1994	1995	1996
Idaho	57.0	50.0	49.0	70.0	61.0	55.0	47.0	47.0	68.0	59.0	1,700	2,000	1,800	2,300	1,000	935	940	846	1,564	590
Washington	102.0	99.0	82.0	112.0	109.0	100.0	98.0	81.0	111.0	108.0	1,600	2,400	1,704	2,500	1,300	1,600	2,352	1,409	2,475	1,404
United States	59.0	149.0	131.0	182.0	170.0	155.0	145.0	128.0	179.0	167.0	1,635	2,270	1,762	2,376	1,247	2,535	3,292	2,255	4,339	1,994

Austrian Winter Pea

State	Area Planted (1,000 Acres)					Area Harvested (1,000 Acres)					Yield (Pounds)					Production (1,000 Cwt.)				
	1992	1993	1994	1995	1996	1992	1993	1994	1995	1996	1992	1993	1994	1995	1996	1992	1993	1994	1995	1996
Idaho	10.0	12.0	6.0	10.0	8.0	8.0	10.0	4.0	7.0	7.0	1,100	1,500	1,100	1,500	1,400	88	150	44	105	98
Oregon	1.2	1.0	1.0	0.9	0.6	0.7	.5	.6	0.7	0.3	1,500	1,000	1,170	2,000	1,670	11	5	7	14	5
United States	11.2	13.0	7.0	10.9	8.6	8.7	10.5	4.6	7.7	7.3	1,138	1,476	1,109	1,545	1,411	99	155	51	119	103

Wrinkled Seed Pea

State	Production (1,000 cwt)						
	1990	1991	1992	1993	1994	1995	1996
Idaho	596	639	397	577	368	493	316
Washington	326	286	140	272	386	555	232
United States	922	925	537	849	754	1,048	548

Dried Beans, U.S. Exports by Country of Destination, October 1995-September 1996

Metric Tons

<i>Country</i>	<i>Navy or Pea</i>	<i>Great Northern</i>	<i>Large Lima</i>	<i>Baby Lima</i>	<i>White n.e.c.</i>	<i>La Red Kidney</i>	<i>Ok Red Kidney</i>	<i>Pinto</i>	<i>Black</i>	<i>Beans n.e.c.</i>	<i>Seed Beans</i>	<i>Small Red</i>	<i>TOTAL</i>
NORTH AMERICA:													
Barbados							3						3
Bermuda													
Canada	1458		390			983	457			1587	1680	539	7094
Cayman Is.													
Costa Rica	220						7		170	81	82	203	763
Dominican Rep.	38		9	10			18	3896		27	6	281	4285
French W Indies	5		81			963	209			17	14		1289
Guatemala								387	473		19		288
Haiti			77					11963	736	86			947
Honduras										20		2473	2493
Jamaica & Dep.	19		4	18					19	18	14		403
Leeward-Windward Is.							77						77
Mexico	1593	79	64		299	1987	2425	36447	18906	3230	1957	37	67024
Netherlands-Antilles	38												38
Nicaragua												510	510
Panama	2		14	25		108	36			187	29		401
Trinidad & Tobago						91	72		34	112			309
SOUTH AMERICA:													
Argentina		40		38							39	2	117
Bolivia									258				258
Brazil	19								770	265		251	1306
Chile											64		64
Colombia				?		222	14			1223	5	738	2209
Ecuador										106		130	236
French Guiana						421							421
Guyana										58			58
Peru	9										3	21	33
Surinam													
Uruguay										18	1		19
Venezuela	345	975			18	112			29	104	5	262	1850
EUROPE:													
Armenia, Rep. of								214				239	453
Azerbaijan								168				350	518
Belgium & Luxembourg	1827	1914			19		481	80	35	55		16	4407

Dried Beans, U.S. Exports by Country of Destination, October 1995-September 1996

Metric Tons

Country	Navy or Pea	Great Northern	Large Lima	Baby Lima	White n.e.c.	Lt Red Kidney	Dk Red Kidney	Pinto	Black	Beans n.e.c.	Seed Beans	Small Red	TOTAL
Bosnia-Herzegovina	1565							4700				40	6305
Croatia	65												65
Czech Republic	76												76
Cyprus		25								298	2		325
France	1422	10425				448	3511			154	677		16637
Georgia, Republic of							1456	485				649	2571
Germany	593	84	69		21	21	472	45	48	44	88	46	1531
Greece		1779			18				16	485	53		2351
Hungary	19										4		23
Ireland	439	25	39				57				3		563
Italy	6198	1779	67		233	24	4452	108	184	3017	1102	1	17165
Malta & Gozo													
Netherlands	902	462	36	73		18	574		2	3189	2363	806	8425
Norway										17		41	58
Poland	64						236						300
Portugal	127					915	33	18	176	590			1859
Russian Federation					3			684	66			3	756
Slovakia	124							155					279
Slovenia													
Spain	665	2460	36	9		54	210	437	65	1188	621		5745
Sweden	9	97					54		19	20	8	20	227
Switzerland		74		18			368						460
Turkey							40				127		167
Ukraine													
United Kingdom	63115	80	2772	36		16	7551	348	56	343	203	44	74564
ASIA:													
Bahrain						17				36			53
China (Mainland)													
Hong Kong						81	71		29	218			399
India													
Israel	19	1208								61	33		1321
Japan	95	2296	954	12009			2012	30	11	370	559	1616	19952
Jordan	20									36	336		392
Korea	208	1160	174							144		35	1721
Kuwait		47											280
Lebanon	34					20			20	193			280
Malaysia	77	860			168	20	100			76			1301
Oman									16		34		84
Philippines	123	1803						140		77	5		82
										137			2203

Dried Beans, U.S. Exports by Country of Destination, October 1995-September 1996

Metric Tons

Country	Navy or Pea	Great Northern	Large Lima	Baby Lima	White n.e.c.	Lt Red Kidney	Dk Red Kidney	Pinto	Black	Beans n.e.c.	Seed Beans	Small Red	TOTAL
Saudi Arabia	87	18				5	41		106	609	296		1162
Singapore	51								18	36			105
Sri Lanka											54		54
Taiwan	21	50	36						3	105			215
Thailand								30		10			40
United Arab Emirates						187	77	5	303	679			1251
Yemen													
OCEANIA:													
Australia	248	980	330	266	288	144	285	222	25	65	978	737	4568
French Pacific Is.		2			82		2			36		96	218
New Zealand	18	79		21			68	4		169	91	140	590
Other Pacific Is.											3		3
AFRICA:													
Algeria	7913	1090						103	38	350	35		9529
Angola	1307							12797				190	14294
Benin								1936					1936
Burkina Faso								129					129
Burundi											12		12
Ethiopia								5029					5029
Kenya										18			287
Liberia													610
Morocco	205	64											3890
Mozambique	55							555					610
Rwanda								3890					3890
Senegal													
Sierra Leone													
So. Africa, Rep of	293			18					127		111		549
Tanzania													
Togo													
W. Africa, NEC								270					270
Zaire													
Total	91728	29955	5152	12546	1149	6857	25780	85236	22758	19965	11716	11749	324581
Crop Year (Sep-Aug)	86399	28291	5361	12279	1147	6960	25420	82042	23483	21503	33415	11149	337448

Source: Bureau of Census. Compiled by USDA Bean Market News

Dried Peas, U.S. Exports by Country of Destination, October 1995-September 1996

Metric Tons

Country	Lentil	Yellow	Green	Other n.a.c.	Austrian Winter	Blackeye	Seed	Total Season
WESTERN HEMISPHERE:								
Argentina			188				111	299
Barbados	19	50	78					147
Belize			36					36
Bolivia	2524							2524
Brazil	21		3835	8			271	4133
Canada	901			3001			7207	11109
Chile	21		597				463	1081
Colombia		314	1046			109	166	1635
Costa Rica	43							43
Dominican Republic	5		188					193
Ecuador			20				4	24
El Salvador							20	20
French Guiana	8							8
Guatemala							78	78
Guyana		100					40	140
Haiti	59		5286			254		5599
Leeward-Windward	11		19			19		49
Mexico	2072	1017	2037	457		18	1268	6869
Netherlands Ant.						4		4
Panama	61		4					65
Peru	13119	42	15094				1055	29310
Surinam								
Trinidad-Tobago	21		61					82
Venezuela			212	106				318
EUROPE:								
Armenia, Rep. of	772		557					1329
Belgium-Lux.	156	41		40			81	318
Bulgaria	313							313
Bosnia-Herzegovina	346		1994					2340
Croatia			1001					1001
Cyprus						89		89
Denmark				24			283	307
Finland							173	173
France	16			1		72	1830	1919
Germany	1010		1	107			1625	2743
Greece	607		10	24		91	164	896

Dried Peas, U.S. Exports by Country of Destination, October 1995-September 1996

Metric Tons

Country	Lentil	Yellow	Green	Other n.e.c.	Austrian Winter	Blackeye	Seed	Total Season
Hungary							37	37
Iceland							30	30
Ireland							70	70
Italy	1963		398			54	1446	3861
Malta Gozo								
Netherlands				19		4	509	532
Norway	2		184				103	289
Portugal							31	86
Spain	15373		590	26		55	1052	17075
Sweden	121					34	36	1347
Switzerland	11		60				1190	71
Turkey			459	3			162	624
United Kingdom			519			517	3120	4156
ASIA:								
Bahrain	18					37		55
China (Mainland)			44				17	61
Hong Kong		181	412	72	44	491	453	1653
India		281	4941	62		37		5321
Indonesia							4	4
Israel						18	932	950
Japan	155	11	1834	164	960	18	849	3991
Jordan						78		78
Korea	486		1282	64		36	25	1893
Kuwait	7					18	6	31
Lebanon								
Malaysia			63				3	66
Pakistan	124		20				78	222
Philippines			9143				76	9219
Saudi Arabia	78		61			113	67	319
Singapore			21					21
Syria								
Taiwan	20	1244	1821		1285	199	80	4649
United Arab Em.	347					457		804
OCEANIA:								
Australia	103		29	88		144	101	465
Fr. Pacific Is.	522					3		525
New Zealand			15				47	62

Dried Peas, U.S. Exports by Country of Destination, October 1995-September 1996

Metric Tons

Country	Lentil	Yellow	Green	Other n.s.c.	Austrian Winter	Blackeye	Seed	Total Season
AFRICA:								
Algeria								
Angola	697							697
Egypt								
Ethiopia								
Ghana						13		13
Kenya								
Morocco	403						30	433
Rwanda	6359	3292	34712					44363
Somalia	1999							1999
So. Africa, Rep. of			16				112	128
Sudan	1986							1986
Tanzania								
Zimbabwe							11	11
Total	52879	6573	88888	4264	2289	3018	25480	183391
Crop Year (Sep '95- Aug '96)	62374	7818	93163	4425	4530	2966	26799	202075

Source: Bureau of Census, Compiled by USDA Bean Market News

USDA/CCC Purchases of Dry Edible Beans, Peas & Lentils Under PL480 Program for Export Distribution *(metric tons)*

CLASS	FY93	FY94	FY95	FY96
Pea Bean	4,110	28,270	1,290	2,050
Pinto	24,930	55,320	64,422	21,688
Great Northern	5,170			
Small Red	4,500	7,185	2,542	4,983
Black	6,960	1,390	460	420
Light Red Kidney		1,020	1,080	420
Dark Red Kidney		1,214	2,133	1,261
Lentil	37,060	37,780	33,660	20,640
Green Pea, Whole	13,500	27,600	41,045	48,400
Yellow Pea, Split	1,890			
Yellow Pea, Whole			5,570	3,510
Small White			710	
Pink				120
TOTAL	98,660	159,779	152,412	103,492

**USDA Purchases of Canned Dry Beans, Peas and Lentils for Use
in Various Domestic Feeding Programs (1,000 pounds)**

Class	Oct '91 Sep '92	Oct '92 Sep '93	Oct '93 Sep '94	Oct '94 Sep '95	Oct '95 Sep '96
Baby Lima		1,108	435	524	315
Blackeye		1,182	665	755	140
Black				140	
Garbanzo		259	3,079	245	70
Great Northern		1,071	1,465	315	385
Green Pea	23,151	18,499	9,964	12,110	15,959
Red Kidney		2,216	1,680	1,750	2,449
Pigeon Pea		784	356		
Pink		2,696	1,865	1,715	1,190
Pinto	4,595	5,964	6,459	7,738	7,278
Refried Bean	6,999	15,888	7,198	5,080	4,935
Small Red		1,847	2,869	3,079	980
Vegetarian Bean	19,736	22,367	16,949	16,528	20,475
Total	54,281	75,791	52,024	49,949	52,176

**USDA Purchases of Dry Edible Beans, Peas & Lentils
for Use in Various Domestic Feeding Programs (1,000 pounds)**

Class	Oct '91 Sep '92	Oct '92 Sep '93	Oct '93 Sep '94	Oct '94 Sep '95	Oct '95 Sep '96
Baby Lima	885	242	645	564	726
Blackeye	1,407	202	161	1,971	868
Garbanzo	40			40	
Great Northern	2,332	4,636	5,386	2,136	1,813
Green Pea	2,400			40	40
Green Split Pea	120	40	161	282	40
Lentil	142	81		81	40
Pea Bean		40	81	363	
Pink					160
Pinto	10,420	9,144	7,784	12,692	14,500
Red Kidney	261	1,732	4,636	1,613	1,048
Small Red		242	645	40	
Small White	40			40	40
Total	18,027	16,959	17,651	19,265	18,770

Source: Fruit and Vegetable Division, USDA

U.S. Exports, Dry Beans (cwt)

Beans	Oct 1991-Sep 1992	Oct 1992-Sep 1993	Oct 1993-Sep 1994	Oct 1994-Sep 1995	Oct 1995-Sep 1996
Beans n.e.c.**	1,505,896	865,173	742,245	596,719	326,369
Black	238,868	294,909	198,612	236,554	513,716
Garbanzo	118,652	45,679	54,230	213,880	122,157
Great Northern	612,989	340,743	361,488	784,375	660,388
Lima	517,508	464,664	483,667	450,069	390,214
Navy or Pea	2,039,387	1,811,696	1,576,532	2,035,265	2,026,534
Pinto	2,176,822	1,246,503	1,860,264	2,504,514	1,898,668
Red Kidney	966,761	785,808	776,196	788,299	719,405
Seed	453,067	442,287	239,552	243,079	261,620
Small Red	*	266,757	389,928	391,030	264,045
White n.e.c.	99,119	151,214	35,406	160,781	25,331
TOTAL	8,729,069	6,715,432	6,718,120	8,404,565	7,208,447

*Included with Beans nec prior to 1992-93

** Includes broad beans and miscellaneous beans

NA - Not Available

U.S. Exports, Dry Ripe Peas (cwt)

Peas	Oct 1991-Sep 1992	Oct 1992-Sep 1993	Oct 1993-Sep 1994	Oct 1994-Sep 1995	Oct 1995-Sep 1996
Austrian Winter	23,479	45,900	69,842	28,858	50,463
Blackeye	88,581	159,150	68,739	81,482	66,998
Green	1,531,447	1,372,826	1,710,285	1,549,856	2,000,763
Lentils	792,730	1,343,725	1,978,011	1,512,069	1,233,738
Other n.e.c.	146,981	68,078	118,056	265,897	94,158
Seed All Types	494,734	474,893	571,895	626,790	578,509
Yellow	129,454	146,231	220,504	101,279	144,908
TOTAL	3,207,406	3,610,803	4,737,332	4,166,231	4,169,537

Source: Bureau of the Census

U.S. EXPORTS SHELLED BEANS OTHER THAN CANNED DRIED, OCTOBER/SEPTEMBER (Metric Tons)

COUNTRY	1992/93	1993/94	1994/95	1995/96	COUNTRY	1992/93	1993/94	1994/95	1995/96
Australia	281	422	800	763	Israel				36
Bahamas			6		Indonesia	6		55	25
Bahrain	9		12	35	Italy	9	17	29	22
Barbados	18		11		Japan	9	9	211	373
Belgium-Luxembourg			7	7	Jordan				16
Bermuda					Korea, Rep. of	139	195	226	114
Brazil		2	9	27	Kuwait	13		47	15
Brunei			3	16	Lebanon			26	42
Canada	946	899	1127		Malaysia		38	4	16
Cayman Islands	13				Marshall Islands	8	9		
Chile					Mexico	360	757	380	497
China			25		Netherlands Antilles	38	71	75	133
Colombia		4	18	11	Netherlands	40	38	129	112
Costa Rica	26		14		New Zealand		21	29	68
Cyprus	6				Nicaragua	9			
Czechoslovakia					Norway	9	22	86	159
Denmark			41	61	Oman			7	2
Dominican Republic		43			Panama	76	269	123	286
El Salvador			6		Philippines			14	117
Egypt			1	4	Qatar				19
Finland	17		39	58	Russian Federation			92	30
French Pacific Islands	56		87	189	Saudi Arabia	32	34	91	79
French West Indies		16			Singapore	13	92	199	236
France	46	49	153	220	Slovenia			6	3
Germany	313	143	108	23	Spain	21	24	37	52
Greece			48	98	Sweden	1	6	239	399
Guatemala	4			130	Taiwan	2	105	5	17
Guyana				136	Thailand			29	4
Honduras			32		United Arab Emirates	41	31	11	91
Hong Kong	131	132	405	653	United Kingdom	47	73	67	76
Iceland			2		Venezuela	59	19	157	14
					Yemen			14	15
					TOTAL	2803	3620	5345	5499

U.S. EXPORTS OF BEANS OTHER THAN SHELLED, OCTOBER/SEPTEMBER (Metric Tons)

COUNTRY	1992/93	1993/94	1994/95	1995/96	COUNTRY	1992/93	1993/94	1994/95	1995/96
Angola					El Salvador	7			
Australia	381	431			Korea, Rep. of	74		21	
Bahamas	5	18		36	Kuwait	67	15	5	47
Barbados	8		18		Lebanon			15	45
Belgium-Luxembourg	220			8	Leeward-Windward Is.	63		18	44
Bolivia		4			Marshall Islands				
Brazil			18		Malaysia				11
Canada	948	388	560	771	Mexico	826	1103	1228	1079
Cameroun			19		Morocco				74
China, Peoples Rep				15	Netherlands Antilles	77	110	32	32
Chile	11				New Zealand	56	33		16
Colombia			13	14	Nicaragua				6
Costa Rica					Norway			18	
Czech Republic		20		19	Oman	132		20	229
Dominican Republic		39		3	Panama	436	741	594	14
Ecuador	91	18			Peru				
Egypt		5			Philippines	208	21		

Poland	11				Romania			14	28
Qatar	12			9	Russian Federation	342	124	76	
Finland		9		15	Saudi Arabia	605	4	20	8
France		9			Singapore	9	14		6
French Pacific Islands	193	277	291	188	South Africa, Rep of	115	61	80	102
Ghana				12	Sweden			15	
Germany	280			76	Switzerland				1
Greece	45				Taiwan		15		
Guatemala			24		Turks & Caicos Is.	2	2		52
Haiti			29		United Arab Emirates	35	67	20	8
Hong Kong	61	6		6	United Kingdom	33	39		24
Iceland				4	Venezuela	60	1	13	19
Ireland	128				W. Africa, nec			18	
Israel	15			3	Yemen		9		
Italy	555	2		49	TOTAL	6432	3589	3345	3070
Jamaica & Dep.			22	49					
Japan		4		36					

U.S. EXPORTS OF SHELLED CANNED DRY BEANS, OCTOBER/SEPTEMBER (In Cases of 24/303)*

COUNTRY	1992/93	1993/94	1994/95	1995/1996	COUNTRY	1992/93	1993/94	1994/95	1995/1996
Angola	5				Korea, Rep of	10	28	27	11
Argentina	6				Kuwait	97	95	23	
Australia		1			Latvia			57	
Bahamas	27	14	1	120	Lebanon	1		5	
Bahrain	14	17	6		Leeward-Windward Islands	71	79	17	19
Barbados			1	12	Malaysia	6	4	3	
Belgium-Luxembourg	33		1	1	Mexico	58	129	124	150
Brunei	1				Netherlands	28	20	5	1
Canada	1889	1403	1461	1842	Netherlands Antilles	17	20	4	
Colombia		3		74	New Zealand	6	1	2	4
Costa Rica	2	5			Norway	49	19	10	
Czechoslovakia					Oman	21	4		
Denmark	19	22	13		Panama	39	20	3	
Dominican Republic			54		Philippines	2			
Egypt					Qatar	25	25		
El Salvador		3			Russian Federation	10	5	7	
Finland	12	8	5		Saudi Arabia	220	341	31	162
France	68	72	37		Singapore	65	54	43	
French Guiana	5				Sudan			13	
French Pacific Islands	26			24	Sweden	62	69	38	
Germany	13	2		5	Switzerland				
Greece	60	63	15		Taiwan		1		
Guatemala	1	139	81	86	Trinidad Tobago	14	6		
Hong Kong	142	73	39	12	United Arab Emirates	329	98	16	1
Iceland			3	2	United Kingdom	22	12	8	97
Indonesia	18	25	4	48	Venezuela	5	2	5	
Israel					Yemen		7		
Japan	139	207	102	163	TOTAL	3650	3111	2266	2834
Jordan		18							

*24 lbs net weight canned beans per case is equivalent to about 8 lbs dry beans per case. For continuity of export data, figures shown are dry bean equivalent in metric ton.

Source: USDA, Foreign Agricultural Service and Bureau of Census

WORLD PULSE PRODUCTION (1,000 Metric Tons)***

COUNTRY	1989-1991	1992	1993	1994	1995	COUNTRY	1989-1991	1992	1993	1994	1995
WORLD	55949	54284	56886	57782	55987	Korea D P Rep	325	310F	290F	200F	300F
AFRICA	6625	6454	6608	6933	7257	Pakistan	719	709	553	624	781
Burkina Faso	60	62F	80	74	62F	Syria	131	200	199	188	259
Burundi	333	386	378	259	358	Tajikistan**		10	5	6F	6F
Egypt	423	280	321	386	362	Thailand	476	401	361	381	365F
Ethiopia PDR**	720	815F				Turkey	1946	1822	1946	1679	1824
Eritrea**			25F	38	45F	Yemen	64	76	76	68	70F
Ethiopia**			872F	954F	1108F	EUROPE	7439	6972	7345	6970	5811
Kenya	219	215	113	254	270F	Belarus**		164F	150F	140F	173F
Morocco	386	163	130	285	118	Bosnia Herzg**		23	17F	16F	17
Niger	330	458F	433	433F	433F	Bulgaria	89	64	37	45	52F
Nigeria	1421	1575	1625	1721	1850F	Croatia**		20	22	24	23F
Rwanda	216	163	148F	132F	130	Czechoslovak**	256	351			
South Africa	135	53	94	87	72	Czech Rep *			220	163	137
Sudan	103	102	85	115F	107F	Estonia**					
Tanzania	437	312F	337F	302F	378F	France	3310	3444	3748	3850	2792
Tunisia	73	96	100	77	79	Greece	51	51	44	44	41
Uganda	493	512	543	498	510	Hungary	347	255	149	144	130F
Zaire	191	195F	196F	198F	200F	Italy	221	226	192	168	174
NORTH AND CENTRAL AMERICA						Latvia**		8	5	6F	6F
Canada	4134	3687	4746	5697	5797	Lithuania**		27	33F	30F	35F
Dominican Rep	828	933	1460	2077	2090	Macedonia, FYR**		34	26	25	26F
Guatemala	119	127	84	90	79	Moldova Rep**		122	122	70	65
Mexico	1290	949	1436	1509	1428	Poland	635	598	411	215	250
St Kitts Nev**						Portugal	66	50	46	44	44
USA	1621	1244	1285	1551	1724	Russian Fed**		3078	2891	2673	1435
SOUTH AMERICA						Slovakia**			150	187	147
Argentina	244	317	244	265	307	Slovenia**		7	6	9	6F
Brazil	2471	2820	2505	3396	3941	Spain	238	162	157	212	155
Chile	128	147	94	91	92	UK	750	711	943	721	721F
Colombia	167	182	179	194	217	Ukraine*		2986	2898	2636	1516
Peru	105	93	109	122	126	Yugoslav SFR	210				
ASIA	25263	24835	26150	26977	27481	Yugoslavia, FR†		110	84	107	113
Armenia**		3	3	4	4	OCEANIA	1596	2088	2520	1287	2464
China	5589	6071F	5957F	6113F	5511F	Australia	1530	2003	2446	1216	2361
India	13427	12078	13517	14317	14820	New Zealand	61	80	69	66	76
Indonesia	455	524F	403F	259	310	USSR	5136F				
Iran	398	670	643	640	650F	* - Unofficial Estimate					
Japan	145	106	75	112	103	** - Data not Available					
Kazakhstan**		124	100	80F	55	*** - Latest Information Available					
						F - FAP Estimate					
						Source: FAO United Nations					

WORLD DRY BEAN PRODUCTION (1,000 Metric Tons)***

COUNTRY	1989-1991	1992	1993	1994	1995	COUNTRY	1989-1991	1992	1993	1994	1995
WORLD	15910	15905	16502	17938	17944	China	1549	2011F	1910F	2011F	1811F
AFRICA	1928	1828	1936	1813	2068	India	3780	3615*	4140*	4140F	4140F
Angola	35	36	36F	34F	34F	Iran	136	218*	154	150	150F
Benin	51	62	58	63	63F	Japan	142	102	72	109	100
Burundi	297	346	337*	332	319	Korea Rep	33	28	24	19	19F
Cameroon	62	70F	70F	72F	72F	Myanmar	275	484	611	612	966
Ethiopia PDR**	95	130F				Pakistan	93	90	98	107	110F
Ethiopia**			200F	270F	390F	Philippines	31	32F	32F	32F	32F
Madagascar	49	73	52	50	50F	Thailand	321	261	231	256	240F
Rwanda	203	150	130F	120F	118	Turkey	206	200	200	180	225
South Africa	117	34	75	64	57	Viet Nam	97	112F	106	110	115
Tanzania	290	195F	205F	190F	230F	EUROPE	600	487	451	420	474
Togo	20	24	39	22	29	Belarus**		13F	7F	12F	20F
Uganda	389	402	428	378	387	Bosnia Herzg**		19F	14F	13F	14
Zimbabwe	47	40F	45F	46F	40F	Bulgaria	36	33	18	30	35F
NORTH AND CENTRAL AMERICA	3008	2263	2867	3306	3317	Croatia**		16	18	21	20F
Canada	95	68	131	171	191	Estonia**					
Costa Rica	34	36	33	40F	45	France	9	11	11	10	10
Dominican Rep	33	37	43	37	37	Greece	25	27	22	24	23
El Salvador	55	62	62	61	51	Italy	38	34	37	28	27
Guatemala	107	115	100	100	109	Latvia**			1	1F	1F
Haiti	53	56	50F	50F	50F	Lithuania**					
Honduras	81	47	55	41	38	Macedonia, FYR**		13	10	12	12F
Mexico	1066	719	1288	1364	1278	Poland	123	99	107	66	101
Nicaragua	69	64	77	84	80	Portugal	41	24	17	15	16
USA	1359	1026	994	1324	1406	Romania	62	41	48	37	42
SOUTH AMERICA	3013	3421	2996	3959	3565	Russian Fed**		7	6	5	4
Argentina	191	250F	166	198	240	Slovenia		5	4	7	4F
Brazil	2430	2797	2478	3368	2913	Spain	53	36	30	33	34
Chile	92	91	55	54	56	Ukraine**		39	38	32	42
Colombia	113	120	122	137	160	Yugoslav SFR	146				
Ecuador	28	28	36	39	33	Yugoslavia, FR**		73	48	62	70
Paraguay	42	41	46	46	46F	OCEANIA	18	19	32	23	50
Peru	54	42	54	63	60	USSR	69				
Venezuela	50	38	30	42	42F						
ASIA	7156	7826	8448	8641							
Armenia**		2	3	4	4						
Bangladesh	83	69*	82*	85F	87F						

* - Unofficial Estimate

** - Data not Available

*** - Latest Information Available

F - FAP Estimate

Source: FAO United Nations

WORLD GARBANZO (CHICK-PEA) PRODUCTION (1,000 Metric Tons)^{*}**

<i>COUNTRY</i>	<i>1989-1991</i>	<i>1992</i>	<i>1993</i>	<i>1994</i>	<i>1995</i>	<i>COUNTRY</i>	<i>1989-1991</i>	<i>1992</i>	<i>1993</i>	<i>1994</i>	<i>1995</i>
WORLD	7340	6766	6751	7055	8016	EUROPE	72	51	51	77	48
AFRICA	274	263	267	283	265	Bulgaria**	4	4	2	2F	2F
Algeria	20	21F	25	15	16F	Greece	4	5	3	2	2F
Egypt	11	10	16	11	12	Italy	5	12F	5	4	4
Ethiopia PDR	102	120F				Portugal	12	30	13F	13F	13F
Eritrea**			2F	3F	4F	Spain**	46		26	55	27
Ethiopia**			119F	122F	126.5	OCEANIA	174	175	170	65	258
Morocco	56	26	22	47	12	Australia	174		170	65	258
Tanzania	25	16F	20F	15F	22F						
Tunisia	20	30	36	27	31						
NORTH AND CENTRAL AMERICA	163	195	108	103	110						
Mexico	163	195F	107	103	110F						
SOUTH AMERICA	23	35	26	25	26						
Argentina	3	2F	2F	2F	2F						
Chile	6	19	11	10	11						
Peru	3	3F	3F	3F	3F						
ASIA	6634	6046	6114	6502	7307						
Bangladesh	69	65	67	62	60F						
India	4901	4121	4417	4904	5406						
Iran	161	309*	296	299	340F						
Iraq	2	8*	9*	9F	9F						
Israel	8	5	10	8	6						
Jordan	1	2	3	2F	2F						
Lebanon	7	9	10F	10F	10F						
Myanmar	92	112	101	60	77						
Pakistan	516	513	347	411	559						
Syria	26	74	55	36	53						
Turkey	799	770	740	650	730						

* - Unofficial Estimate

** - Data not Available

*** - Latest Information Available

F - FAO Estimate

Source: FAO United Nations

WORLD PEA PRODUCTION (1,000 Metric Tons)* -**

<i>COUNTRY</i>	<i>1989-1991</i>	<i>1992</i>	<i>1993</i>	<i>1994</i>	<i>1995</i>	<i>COUNTRY</i>	<i>1989-1991</i>	<i>1992</i>	<i>1993</i>	<i>1994</i>	<i>1995</i>
WORLD	14878	14230	15063	14654	11535	EUROPE	4890	4789	5241	5177	4017
AFRICA	322	296	336	309	335	Austria	90	83F	107	134	80
Algeria	3*	4F	1	3	3F	Belarus**		50F	57F	58F	78F
Burundi	34	37	37*	24	37	Bel-Lux	12	14	24	15	15F
Egypt	4	3	2	3F	4F	Bulgaria	44	30	16	12	14F
Ethiopia PDR**	95	110F				Croatia**		1			
Eritrea**			1F	1F		Czechoslovak**	210	321			
Ethiopia**			109F	120F	150F	Czech Rep **			206	149	130
Lesotho	2	2F	1	1	2F	Denmark	471	301	451	377	400
Morocco	57	10	50	29	4	Estonia**			30	14	11
Rwanda	13	13	18F	13F	12F	Finland	14	29			
South Africa	4	7	5	4	3	France	3191	3346	3664	3777	2719
Tanzania	25	16F	20F	15F	22F	Germany	34	18F	14	12	21
Uganda	13	15	16	17	17	Germany NL	3155				
						Greece			1		
NORTH AND CENTRAL AMERICA						Hungary	327	242	140	134	120F
	513	656	1172	1587	1687	Italy	36	35	29	23	28
Canada	303	505	970	1441	1455	Latvia**		7	4	5F	5F
Dominican Rep	1	1F	1F	1F	1F	Lithuania**		14	16F	15F	20F
Mexico	2	2F	3	3	3F	Macedonia, FYR**		1	1	2	1F
USA	204	144	195	139	223	Moldova Rep***		104	93	52	38
						Netherlands	55	18*	14	11	11F
SOUTH AMERICA	106	116	125	112	116	Romania	50	33	36	38	54
Argentina	18	30F	40F	28F	28F	Russian Fed**		2607	2526	2287	1212
Bolivia	5	6F	6F	6F	6F	Slovakia**			123	160	106
Chile	6	8	5	4	4F	Slovenia**				1	1F
Colombia	36	44F	40F	40F	40F	Spain	10	8	12	8	4
Ecuador	4	3	7	4	3	Sweden	12	10F	10F	10	22
Paraguay	2	2	2	2	2F	UK	292	261	332	267	267F
Peru	17	19F	18	20	25	Ukraine**		2776	2731	2470	1376
Uruguay	3	3F	3F	3F	3F	Yugoslav SFR	22				
Venezuela	2	2F	2F	2F	2F	Yugoslavia, FR**		24	21	22	20F
ASIA	2180	2180	2067	2247	2068	OCEANIA	450	532	617	276	537
Armenia**						Australia	393	456	554	215*	465
China	1562	1500F	1380F	1550F	1380F	New Zealand	57	75	63	60	72
India	494	552	550	561	561F						
Israel		1	1	1	1	USSR	6417				
Japan	2	1	1	1	1	* - Unofficial Estimate					
Kazakhstan**		104*	80*	60F	45	** - Data not Available					
Myanmar	12	16	22	25*	16	*** - Latest Information Available					
Syria		1	1	1	1	F - FAP Estimate					
Tajikistan		1	1	1F	1F	Source: FAO United Nations					
Turkey	5	4	4	4*	4						

CANADIAN EXPORTS (Metric Ton) (Calendar Year)

COUNTRY	LENTILS			PEAS			PEA BEANS			OTHER BEANS*		
	1994	1995	1996	1994	1995	1996	1994	1995	1996	1994	1995	1996
NORTH AMERICA												
Costa Rica	348	192	202	172	273	224	169	168	63	209		587
Cuba				53268	27063	81619			114			179
Dominican Republic	172	162	168	1337	877	348						1042
Guatemala							21			515		
Haiti							181			444	2390	2492
Honduras										380		
Jamaica											100	113
Martinique							3100			40		
Mexico	5594	7020	9097	2041	3736	3259				68		340
Nicaragua							269			749		
Panama	2708	6722	3692	14	7697	149				60		277
St. Lucia	107	159	107									
Trinidad Tobago	1556	1973	1969	4952	871	253	63	42	43	174	62	43
United States	2914	2787	5203	4557	14367	6372	4748	7938	5134	8456	7934	11292
SOUTH AMERICA												
Argentina	478	5677	4803		259	458						
Brazil	7813	7888	6878	13598	2416		20		304	944	297	560
Chile	6721	10243	8697	1050	1183	767	70	191				
Colombia	35487	32647	30661	26291	21590	29000			157	3938	6080	7838
Ecuador	6944	8326	9407	5792	3301	4483				63		
Paraguay							19			39		
Peru	8810	6779	8020	1076	3608	3802					41	85
Surinam					417							
Uruguay	1247	3186	2354	299	107	175						
Venezuela	9150	13862	10390	6251	10740	8481				1266	1358	223
EUROPE												
Armenia												
Austria												
Belgium	24200	18600	17839	143398	209111	147041	383	57	81	883	449	525
Bulgaria												
Cyprus	594	721	572									
Czech Republic	210	2017	2084									
Czechoslovakia, FR												
Denmark	20	260	30							14	120	78
Finland							38					

CANADIAN EXPORTS (Metric Ton) (Calendar Year)

COUNTRY	LENTILS			PEAS			PEA BEANS			OTHER BEANS *		
	1994	1995	1996	1994	1995	1996	1994	1995	1996	1994	1995	1996
France	20839	16561	16054	34308	91799	38550		214	607	1678	875	711
Germany	9505	14335	12466	22982	4111	2871	2742	2285	2020	580	2458	694
Greece	9889	10084	8471	43			129	160	30	937	739	660
Hungary	21	61										
Ireland				12933	18082	29171	765	727	1897			
Italy	15331	15500	18935	3536	21438	13997	4007	7301	5538	4214	10690	5958
Kyrgyzstan							96					
Luxembourg	592	927	673									
Malta							38	19	43			
Netherlands	11235	5375	8127	32180	109624	17591	780	3132	1012	806	953	1582
Poland	188	142	147		379	234			21	18	82	42
Portugal				633	1355	730		38		1880	2563	
Russia							20		19			2717
Spain	35962	41600	26190	176819	203596	168928	700	1641	315	2818	4460	2871
Sweden	1481	109	139	181	139	116				20	244	119
Switzerland	301	3927	338		500	250	38	495			162	
Turkey	4018	5746	448		42	213		38		59	314	
United Kingdom	1647	1641	1939	2221	5833	2772	37592	32253	33647	674	1665	1415
Former Yugoslavia	42									291	19	97
ASIA												
Bangladesh				3313								
China, P. Rep.				86	234	38257						
Guam										63		
Hong Kong				490	250	147	26	38				70
India				89172	58295	73406					14	
Indonesia				1460	1238	1115						
Israel	3425	1955	1419	193				83	21	216	563	354
Iran Islamic Rep					7456							
Japan				10068	11045	27738	1022	665	1006	1397	2372	3319
Jordan				42	422	105		38			21	
Korea, South				233	441	270	2828	2051	3313	191	156	316
Kuwait	86	300	171								64	
Lebanon	2174	3140	1643								399	99
Malaysia				2003	4734	1732	38					
Nepal				257								
Pakistan				31871	59662	14533					375	
Philippines				1368	10056	3947			64			
Saudi Arabia	247	425	318	600	86	910	812	1317	1745	1047	3482	702

CANADIAN EXPORTS (Metric Ton) (Calendar Year)

COUNTRY	LENTILS			PEAS			PEA BEANS			OTHER BEANS*		
	1994	1995	1996	1994	1995	1996	1994	1995	1996	1994	1995	1996
Singapore							38					
Sri Lanka				370	478	256						
Taiwan				4258	10535	4416						
Thailand				960	985	1061						
United Arab Emirates	356	668	427	1258	36859	470		64	38		570	
Yemen				146	647	256					507	508
OCEANIA												
Australia	445	528	21	450	287	22	1833	262	427	57	19	151
New Zealand							2164	2605	781			171
AFRICA												
Algeria	12982	4021	20427	10887	8800		618	607	2151	2390		218
Angola	2332						1671		630	1048		323
Benin	132						380			100		
Cameroon					248	384						
Egypt	224	1168	3439					333				
Kenya	5710		2138			544				820	200	
Libyan Arab. Jam												
Malawi											711	20
Mauritius	761	1726	740	123	205	31		21	83		107	85
Morocco	3662	21964	1645	18	1337	20		914	19	240		
Mozambique	21	21					40	76		760	3170	1680
Reunion-Africa	368	559	576							123	126	20
Rwanda											309	
Senegal												
South Africa	63	242	1266	5337	6985	3381	857	848	502	67	93	1134
Sudan	4296											
Swaziland												
Tanzania			720	20	3415		57			813		
Togo				204								
Tunisia	225	63										
Zaire	747	1303	1541									
Zambia								164				
Zimbabwe											542	
Others	2407	2130		617	2475		28	102		175	1018	
TOTAL	266681	281165	252591	715716	974761	734799	68330	66962	62044	41505	59041	73436

* Includes Chickpeas, broad, adzuki, mung, black or green gram, and kidney beans

Source: Ag Canada

Dried Peas, U.S. Exports by Country of Destination, October 1995-September 1996

Metric Tons

Country	Lentil	Yellow	Green	Other n.a.c.	Austrian Winter	Blackeye	Seed	Total Season
AFRICA:								
Algeria								
Angola	697							697
Egypt								
Ethiopia								
Ghana						13		13
Kenya								
Morocco	403						30	433
Rwanda	6359	3292	34712					44363
Somalia	1999							1999
So. Africa, Rep. of			16				112	128
Sudan	1986							1986
Tanzania								
Zimbabwe							11	11
Total	52879	6573	88888	4264	2289	3018	25480	183391
Crop Year (Sep '95- Aug '96)	62374	7818	93163	4425	4530	2966	26799	202075

Source: Bureau of Census, Compiled by USDA Bean Market News

USDA/CCC Purchases of Dry Edible Beans, Peas & Lentils Under PL480 Program for Export Distribution (metric tons)

CLASS	FY93	FY94	FY95	FY96
Pea Bean	4,110	28,270	1,290	2,050
Pinto	24,930	55,320	64,422	21,688
Great Northern	5,170			
Small Red	4,500	7,185	2,542	4,983
Black	6,960	1,390	460	420
Light Red Kidney		1,020	1,080	420
Dark Red Kidney		1,214	2,133	1,261
Lentil	37,060	37,780	33,660	20,640
Green Pea, Whole	13,500	27,600	41,045	48,400
Yellow Pea, Split	1,890			
Yellow Pea, Whole			5,570	3,510
Small White			210	
Pink				120
TOTAL	98,660	159,779	152,412	103,492