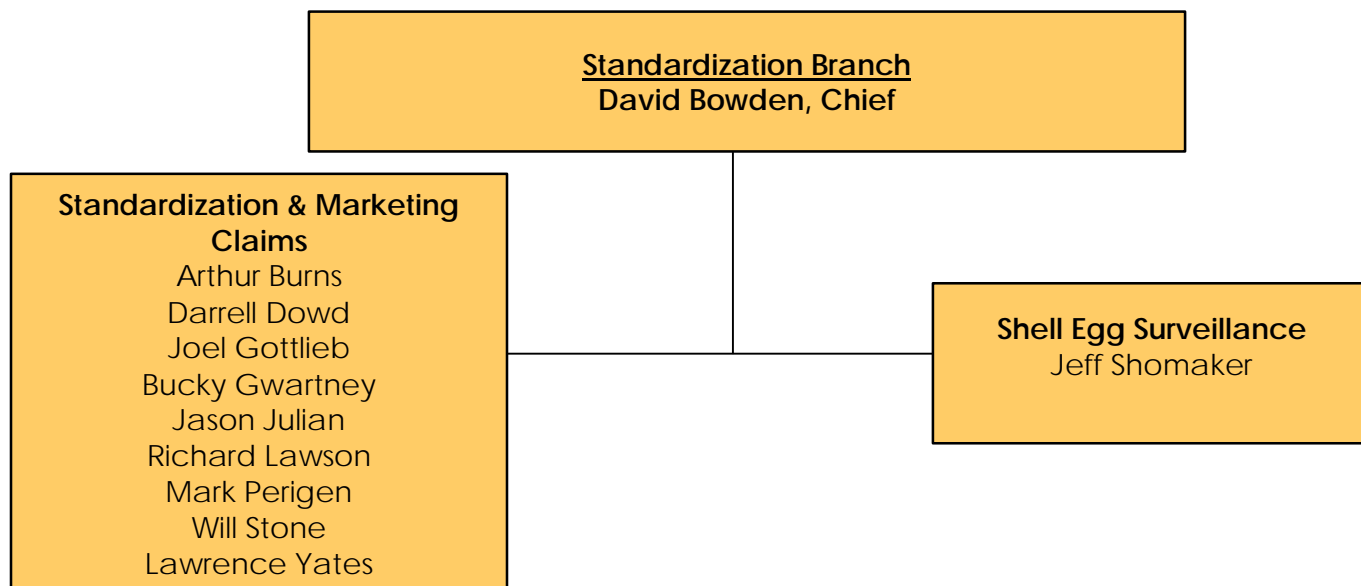


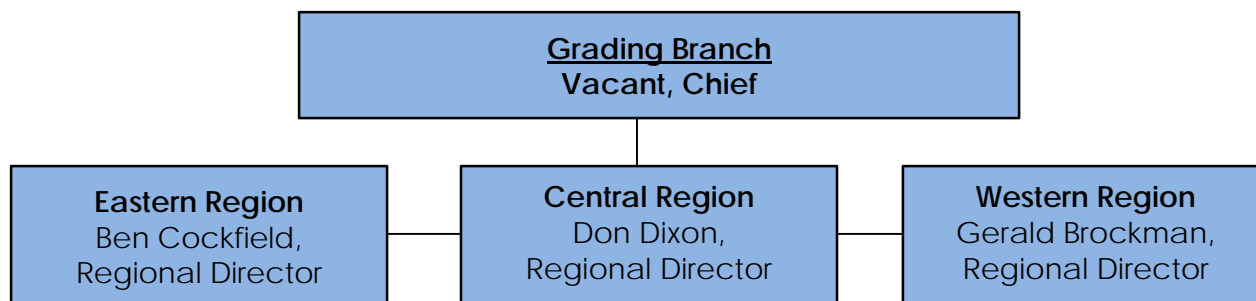
**Livestock, Poultry, and Seed Program
Quality Assessment Division (QAD)
1400 Independence Ave, SW
Room 3932-S
Washington, DC 20250**

Jennifer Porter
Director
202-690-3147
Jennifer.Porter@ams.usda.gov

	Responsibilities	E-Mail	Phone
Jennifer Siedel	Program Assistant: Conference Package; Foreign Travel Review; Weekly; Catch All	Jennifer.Siedel@ams.usda.gov	202-205-9910
Michelle Degenhart	Assistant to the Director: FOIA; Hot Topics; Rulemaking	Michelle.Degenhart@ams.usda.gov	202-260-8417

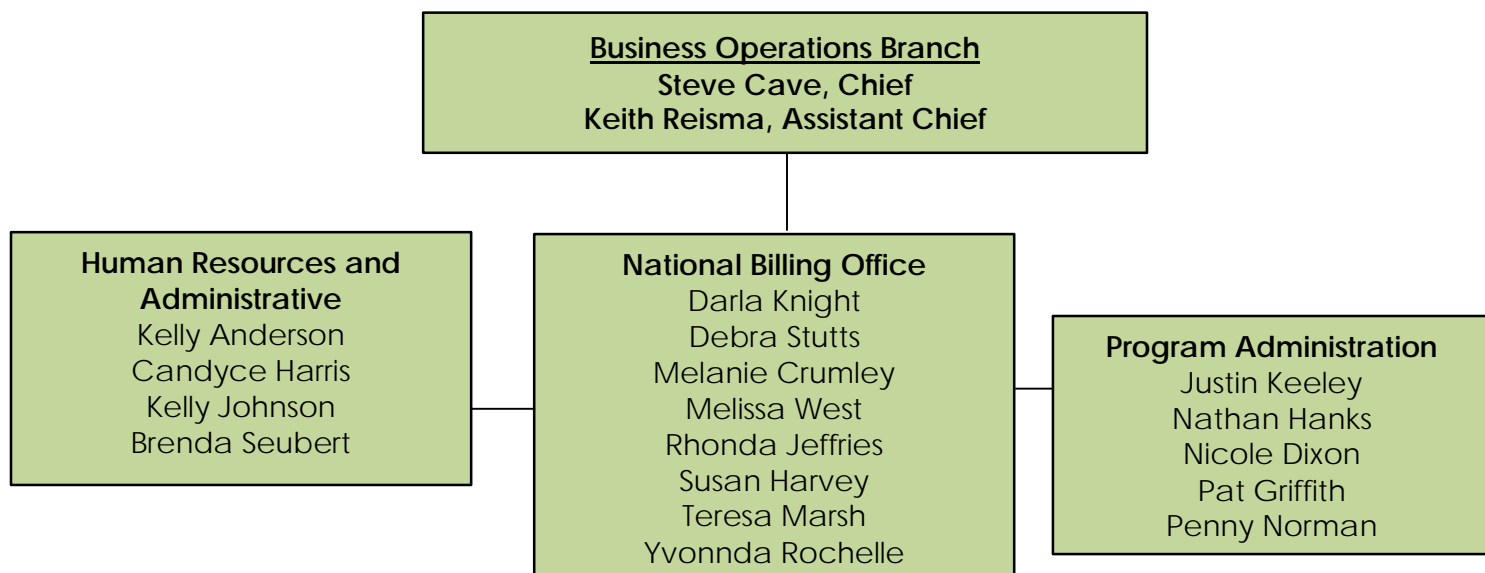


Staff Member	Responsibilities	E-mail	Phone
Bowden, David	Chief; Oversees Branch activities	David.bowden@ams.usda.gov	202-690-3148
Standards & Marketing Claims			
Burns, Arthur	Agricultural marketing research	Arthur.burns@ams.usda.gov	301-938-0313
Dowd, Darrell	Commodity Reprocessing	Darrell.dowd@ams.usda.gov	303-246-9849
Gottlieb, Joel	National Meat Supervisor (application of beef, lamb, veal standards)	Joel.Gottlieb@ams.usda.gov	202-253-1379
Gwartney, Bucky	Beef, lamb, livestock standards (domestic and international); IMPS	Bucky.gwartney@ams.usda.gov	202-720-1424
Julian, Jason	Egg label review, egg standards	Jason.julian@ams.usda.gov	202-731-2149
Lawson, Richard	National Poultry Supervisor (application of poultry standards), Commodity Reprocessing, Child Nutrition Labeling	Richard.lawson@ams.usda.gov	202-690-3166
Perigen, Mark	National Shell Egg Supervisor (application of shell egg standards), Egg further processing	Mark.Perigen@ams.usda.gov	209-522-5251
Stone, Will	International poultry standards; egg, poultry, and feed commodity export programs	William.stone@ams.usda.gov	202-720-3100
Yates, Lawrence	Instrument Grading (beef, lamb)	Lawrence.yates@ams.usda.gov	402-621-0836
Shell Egg Surveillance			
Shomaker, Jeff	Shell Egg Surveillance program manager	Jeff.shomaker@ams.usda.gov	202-720-2153



Staff Members	Responsibilities	E-mail	Phone
Vacant	Branch Chief		202-720-3271
EASTERN REGION			
Cockfield, Ben	Regional Director	Ben.Cockfield@ams.usda.gov	704-860-1372
Attia, Atef	FSS – PA	Atef.Attia@ams.usda.gov	717-787-4212
Camper, Don	FSS—NY, VT, NH, ME, RI, CT, NJ	Don.Camper@ams.usda.gov	518-459-5487
Caceres, Mike	Auditor – FL, GA	Miguel.Caceres@ams.usda.gov	202-731-1908
Covault, Doug	FSS—OH, MI, IN	Douglas.Covault@ams.usda.gov	614-861-7404
Delmaine, Jim	FSS—NC, SC	Jim.Delmaine@ams.usda.gov	919-733-7506
Friend, Byron	FSS—MD, WV, VA, DE	Byron.Friend@ams.usda.gov	410-543-6629
Saxton, Eric	Assistant Regional Director	Eric.Saxton@ams.usda.gov	770-519-7304
Ramos, Elsie	Assistant Regional Director	Elsie.Ramos@ams.usda.gov	860-604-6936
Hendricks, Jeffrey	Assistant FSS—GA, FL	Jeffrey.Hendricks@ams.usda.gov	770-519-9572
Schoop, Jamie	PA, MD	Jamie.Schoop@ams.usda.gov	202-302-6373
Stonebraker, Joe	Staff Officer	Joseph.Stonebraker@ams.usda.gov	704-685-3621
CENTRAL REGION			
Dixon, Don	Regional Director	Don.Dixon@ams.usda.gov	501-224-9201
Anderson, Harold	TX Panhandle (Amarillo, Dumas)	Harold.Anderson@ams.usda.gov	806-341-2392
Anderson, Robert	FSS—AR, LA	RobertW.Anderson@ams.usda.gov	501-425-8400
Barksdale, Joe	TX Panhandle (Hereford, Friona), Liberal, KS	Joe.Barksdale@ams.usda.gov	202-714-0975
Dobernecker, Mike	Eastern NE	Mike.Dobernecker@ams.usda.gov	605-235-2305
Goodman, Charles	IA, IL (except Chicago), MN	Charles.Goodman@ams.usda.gov	202-580-9727
Hanson, Mark	Assistant Regional Director (Meat)	Mark.Hanson@ams.usda.gov	202-538-5902
	NE		
Harmon, Randy	FSS—KY, TN, AL, MS, MO, IL	Randy.Harmon@ams.usda.gov	618-997-6820
Keener, Sue	Western KS (Garden City)	Sue.Keener@ams.usda.gov	303-956-3915
Laird, Gerald	Assistant Regional Director (Poultry)	Gerald.Laird@ams.usda.gov	501-224-9201
Friesenhahn, Marty	Auditor - TX	Martin.Friesenhahn@ams.usda.gov	972-765-0377
Montgomery, Janet	Eastern KS	Janet.Montgomery@ams.usda.gov	202-680-2092
Nelson, Chad	Eastern NE and Western IA	Chad.Nelson@ams.usda.gov	402-352-8227
Szabo, Dave	MI, WI, IL (Chicago)	David.Szabo@ams.usda.gov	720-409-9476
Thorp, Scott	FSS—MN, ND, SD, WI, IA, NE	Scott.Thorp@ams.usda.gov	651-482-0781
Malone, Wade	Auditor – KS, OK	Wade.Malone@ams.usda.gov	620-342-7116
Vacant	FSS—TX, OK, KS	Buda, TX Federal-State Office	512-295-5851
WESTERN REGION			
Brockman, Gerald	Regional Director	Gerald.Brockman@ams.usda.gov	209-522-5251
Anderson, Kellie	FSS—NM, CO, WY, UT, AZ	Kellie.Anderson@ams.usda.gov	303-288-2451
Bonner, Jim	CA	James.Bonner@ams.usda.gov	202-680-2094
Keener, Sue	CO, AZ	Sue.Keener@ams.usda.gov	303-956-3915
Lemon, Mark	FSS—MT, ID, WA, OR, AK	Mark.Lemon@ams.usda.gov	360-705-0330
Matejovsky, Kathy	WA	Kathy.Matejovsky@ams.usda.gov	509-388-5308
Nicholas, Ron	FSS—Northern CA	Ron.Nicholas@ams.usda.gov	209-522-5253

Ross, Aaron	Staff Officers (Red Meat)	Aaron.Ross@ams.usda.gov	209-522-5251
Ramirez, Mario	FSS—Southern CA, NV, HI	Mario.Ramirez@ams.usda.gov	951-369-0110
Strauss, Brett	Staff Officers (Poultry)	Brett.Strauss@ams.usda.gov	209-522-5251
Woody, Leonard	CO, UT	Leonard.Woody@ams.usda.gov	202-302-7265



Staff Members	Responsibilities	E-mail	Phone
Cave, Stephen	Chief; oversees branch operations	Stephen.Cave@ams.usda.gov	501-224-9201
Reisma, Keith	Assistant Chief	Keith.Reisma@ams.usda.gov	501-224-9201
Human Resources and Administrative			
Anderson, Kelly	Administrative Officer-personnel, administrative, and related activities	Kelly.Anderson@ams.usda.gov	209-522-5251
Harris, Candyce	Administrative Officer-personnel, administrative, and related activities	Candyce.Harris@ams.usda.gov	501-224-9201
Johnson, Kelly	Management and program analyst	Kelly.Johnson@ams.usda.gov	501-224-9201
Seubert, Brenda	Management and program analyst	Brenda.Seubert@ams.usda.gov	501-224-9201
National Billing Office			
Crumley, Melanie	Billing Technician	MelanieE.Crumley@ams.usda.gov	501-312-2962
Harvey, Susan	Billing Technician	Susan.Harvey@ams.usda.gov	501-312-2962
Jeffries, Rhonda	Billing Technician	Rhonda.Jeffries@ams.usda.gov	501-312-2962
Knight, Darla	Financial Specialist	Darla.Knight@ams.usda.gov	501-312-2962
Marsh, Teresa	Billing Technician	Teresa.Marsh@ams.usda.gov	501-312-2962
Rochelle, Yvonnda	Billing Technician	Yvonnda.Rochelle@ams.usda.gov	501-312-2962
Stutts, Debra	Supervisor; manages billing function	Debra.Stutts@ams.usda.gov	501-312-2962
West, Melissa	Billing Technician	Melissa.West@ams.usda.gov	501-312-2962
Program Administration			
Dixon, Nicole	CAMS	Nicole.Dixon@ams.usda.gov	202-507-2095
Griffith, Pat	Budget and financial reporting	Pat.Griffith@ams.usda.gov	720-409-9484
Hanks, Nathan	Customer Service/Staffing	Nathan.Hanks@ams.usda.gov	512-657-0305
Keeley, Justin	Employee Relations	Justin.Keeley@ams.usda.gov	202-697-3776
Norman, Penny	Training officer	Penny.Norman@ams.usda.gov	704-685-3322

Auditing Services Branch
Jeff Waite, Chief

Staff Members	Responsibilities	E-mail	Phone
Waite, Jeff	Chief; oversees branch activities	Jeffrey.Waite@ams.usda.gov	202-720-4411
Audit and Verification			
Adams, Nikki	Auditor	Edith.Adams@ams.usda.gov	202-623-8979
Caceres, Mike	Auditor	Miguel.Caceres@ams.usda.gov	202-731-1908
Carney, William	Ag Marketing Specialist	William.Carney@ams.usda.gov	202-744-8875
Ellis, Carrie	Ag Marketing Specialist	Carrie.Ellis@ams.usda.gov	770-371-4467
Friesenhahn, Marty	Auditor	Martin.Friesenhahn@ams.usda.gov	972-765-0377
Gebel, Kelley	Reports Manager	Kelley.Gebel@ams.usda.gov	815-715-6135
Gilbert, Corey	Auditor	Corey.Gilbert@ams.usda.gov	202-731-2088
Heckart, Patty	Auditor	Patricia.Heckart@ams.usda.gov	402-613-6205
Heddlesten, Lacey	Auditor	Lacey.Heddlesten@ams.usda.gov	620-717-3834
Hildreth, David	Auditor	David.Hildreth@ams.usda.gov	202-657-3039
Horne, Willy	Auditor	Willy.Horne@ams.usda.gov	202-841-2974
Kohles, Alan	Auditor	Alan.Kohles@ams.usda.gov	402-218-6768
Lopez, Mike	Manager of Field Operations	Mike.Lopez@ams.usda.gov	501-766-4782
Malone, Wade	Auditor	Wade.Malone@ams.usda.gov	620-342-7116
Matejovsky, Kathy	Ag Marketing Specialist	Kathy.Matejovsky@ams.usda.gov	509-388-5308
Ross, Steve	Manager of Field Operations	Steve.Ross@ams.usda.gov	202-309-1506
Schoop, Jamie	Ag Marketing Specialist	Jamie.Schoop@ams.usda.gov	202-302-6373
Skinner, Rick	Auditor	Rick.Skinner@ams.usda.gov	202-731-8082
Turnbull, Diana	Export Program Manager	Diana.Turnbull@ams.usda.gov	804-752-7597
Stahl, Dana	Program Management Analyst	Dana.Stahl@ams.usda.gov	202-690-3169
Wilson, Darrell	Auditor	Darrell.Wilson@ams.usda.gov	202-657-2581