

Bean Market News 2005 Summary



USDA Agricultural Marketing Service



USDA - AMS, LIVESTOCK AND GRAIN MARKET NEWS

711 "O" Street

Greeley, Colorado 80631

Telephone: (970) 353-9750 FAX: (970) 353-9790

Internet Access: WWW.AMS.USDA.GOV



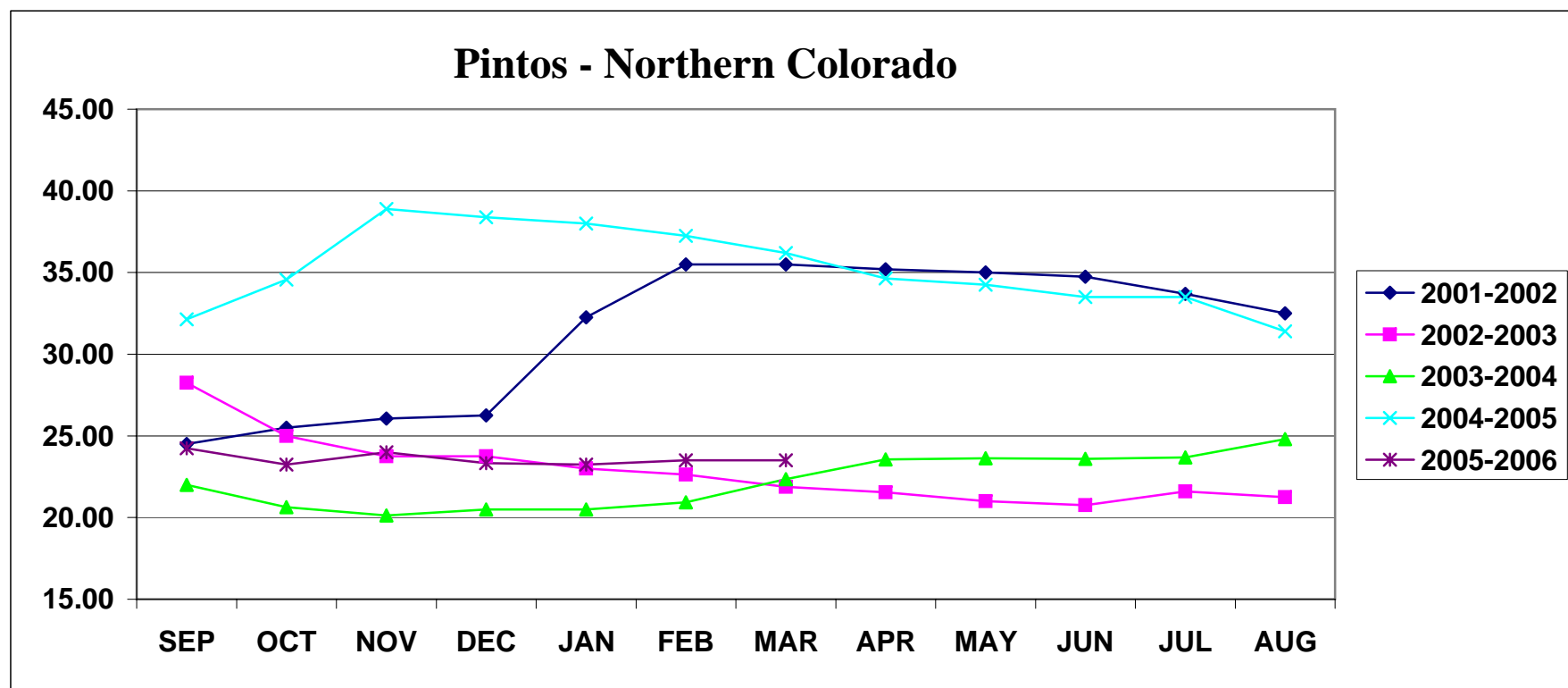
TABLE OF CONTENTS

Dealer Price Trends - Graphs.....	1 - 4
Pinto - Northern Colorado.....	1
Pinto - North Dakota/Minnesota.....	2
Pea Bean - Michigan.....	3
Great Northern - Western Nebraska/Eastern Wyoming.....	4
Monthly Average Prices.....	5 - 14
Dealer - Pinto, Great Northern, Small Red, Pink.....	5
Grower - Pinto, Great Northern, Small Red, Pink.....	6
Dealer - Black, Cranberry, Light Red Kidney.....	7
Grower - Black, Cranberry, Light Red Kidney.....	8
Dealer - Small White, Pea Bean, Dark Red Kidney.....	9
Grower - Small White, Pea Bean, Dark Red Kidney.....	10
Dealer - Austrian Winter Pea, Lentil, Green Pea Split and Whole, Yellow Pea Split and Whole.....	11
Grower - Austrian Winter Pea, Lentil, Green Pea Split and Whole, Yellow Pea Split and Whole.....	12
Dealer - Light Red Kidney, Baby Lima, Large Lima, Blackeye, Pink, Garbanzo (California).....	13
Grower - Light Red Kidney, Baby Lima, Large Lima, Blackeye, Pink, Garbanzo (California).....	14
Dry Edible Beans, U.S. Production by Commercial Class FY Total and Canadian Crop Production.....	15
Dry Edible Beans, Production by Commercial Class by State.....	16 - 17
Dry Bean, Pea, and Lentil Production - USDA, NASS.....	18
Dry Pea and Lentil Production - USADPLC.....	19
Dry Bean, U.S. Exports by Country of Destination.....	20 - 21

Dry Pea, U.S. Exports by Country of Destination.....	22 - 23
U.S. Exports, Dry Beans and Dry Ripe Peas FY Totals.....	24
U.S. Exports, by Month, Dry Beans - Graphs.....	25 - 28
Pea Bean, Great Northern, Large Lima, Baby Lima.....	25
Light Red Kidney, Dark Red Kidney, Pinto, Black.....	26
Seed Beans, Small Reds, White n.e.c., Beans n.e.c.....	27
Green Pea, Lentil, Seed Pea, Yellow Pea.....	28
Canadian Exports by Country of Destination.....	29 - 30
USDA/CCC Purchases of Dry Edible Beans, Peas, and Lentils.....	30
USDA/F&V Purchases for Domestic Feeding Programs.....	31
World Pulse Production.....	32
World Dry Bean Production.....	33
World Garbanzo Production.....	34
World Pea Production.....	35

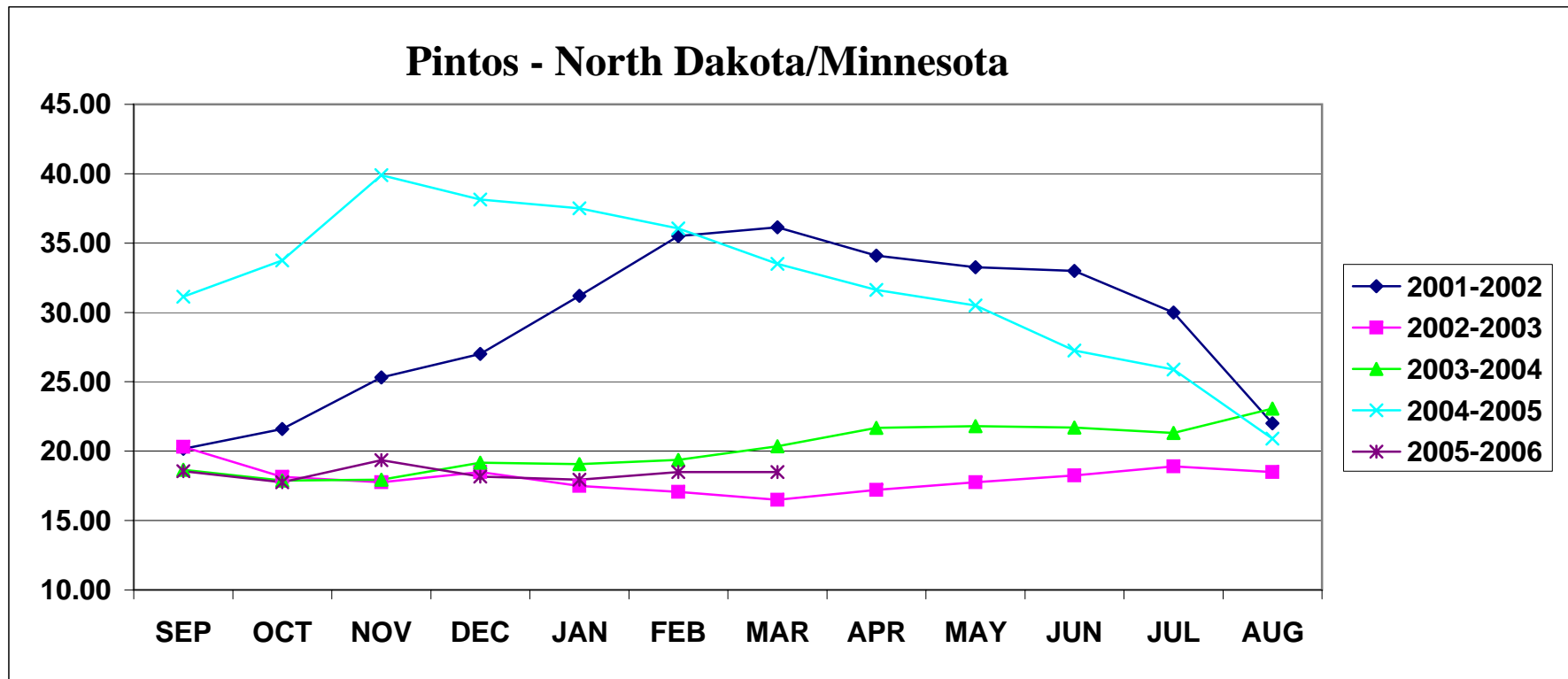
Dealer Monthly Average Price
Per Cwt By Crop Year Fob
PINTOS - NORTHERN COLORADO

	SEP	OCT	NOV	DEC	JAN	FEB	MAR	APR	MAY	JUN	JUL	AUG	AVG
2001-2002	24.50	25.50	26.06	26.25	32.25	35.50	35.50	35.20	35.00	34.75	33.70	32.50	31.39
2002-2003	28.25	25.00	23.75	23.75	23.00	22.63	21.88	21.55	21.00	20.75	21.60	21.25	22.87
2003-2004	22.00	20.63	20.13	20.50	20.50	20.94	22.35	23.56	23.63	23.60	23.69	24.80	22.19
2004-2005	32.13	34.56	38.90	38.38	38.00	37.25	36.20	34.63	34.25	33.50	33.50	31.40	35.23
2005-2006	24.25	23.25	24.00	23.33	23.25	23.50	23.50						23.58



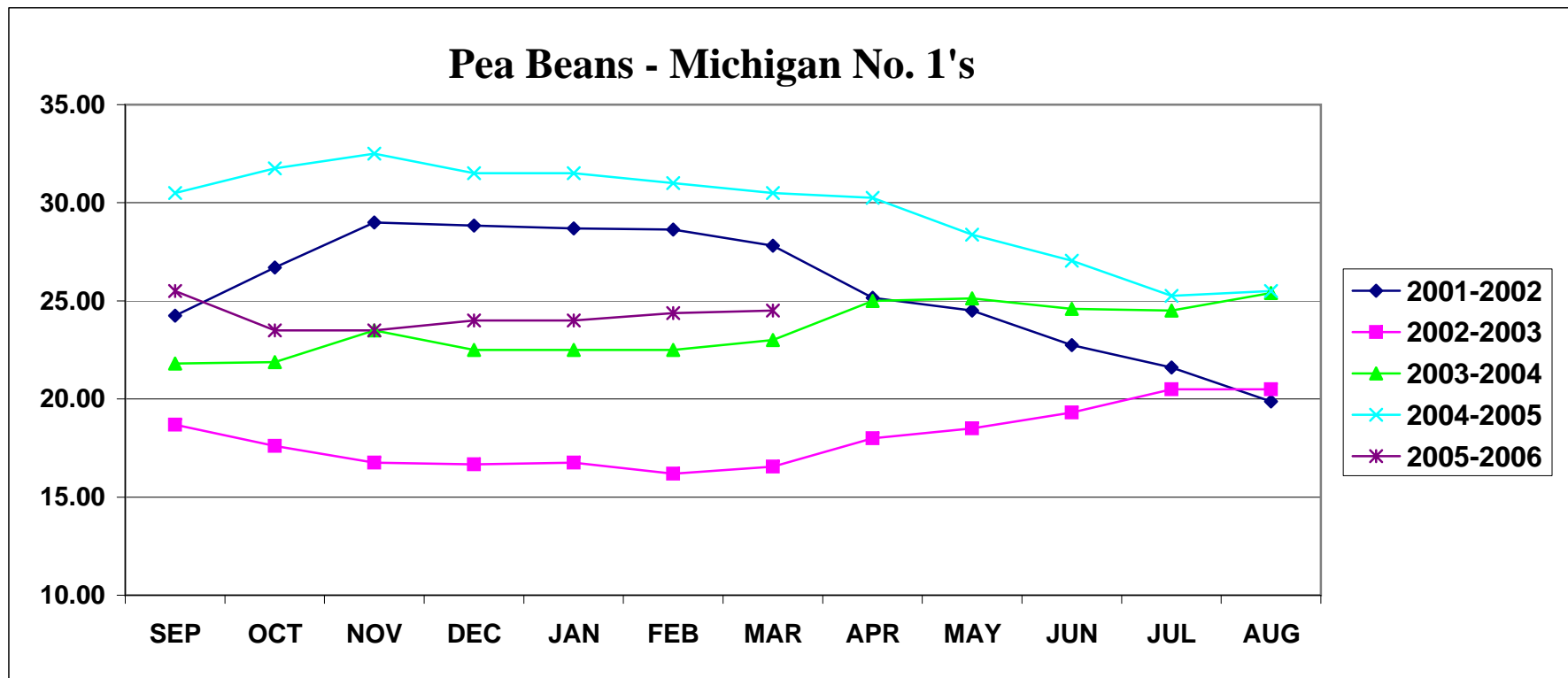
Dealer Monthly Average Price
Per Cwt By Crop Year Fob
PINTOS - NORTH DAKOTA/MINNESOTA

	SEP	OCT	NOV	DEC	JAN	FEB	MAR	APR	MAY	JUN	JUL	AUG	AVG
2001-2002	20.17	21.60	25.31	27.00	31.19	35.50	36.13	34.10	33.25	33.00	30.00	22.00	29.10
2002-2003	20.31	18.15	17.75	18.50	17.50	17.06	16.50	17.20	17.75	18.25	18.90	18.50	18.03
2003-2004	18.65	17.88	17.94	19.17	19.06	19.38	20.35	21.69	21.81	21.70	21.31	23.06	20.17
2004-2005	31.13	33.75	39.90	38.13	37.50	36.06	33.50	31.63	30.50	27.25	25.88	20.90	32.18
2005-2006	18.56	17.75	19.35	18.17	17.94	18.50	18.50						18.40



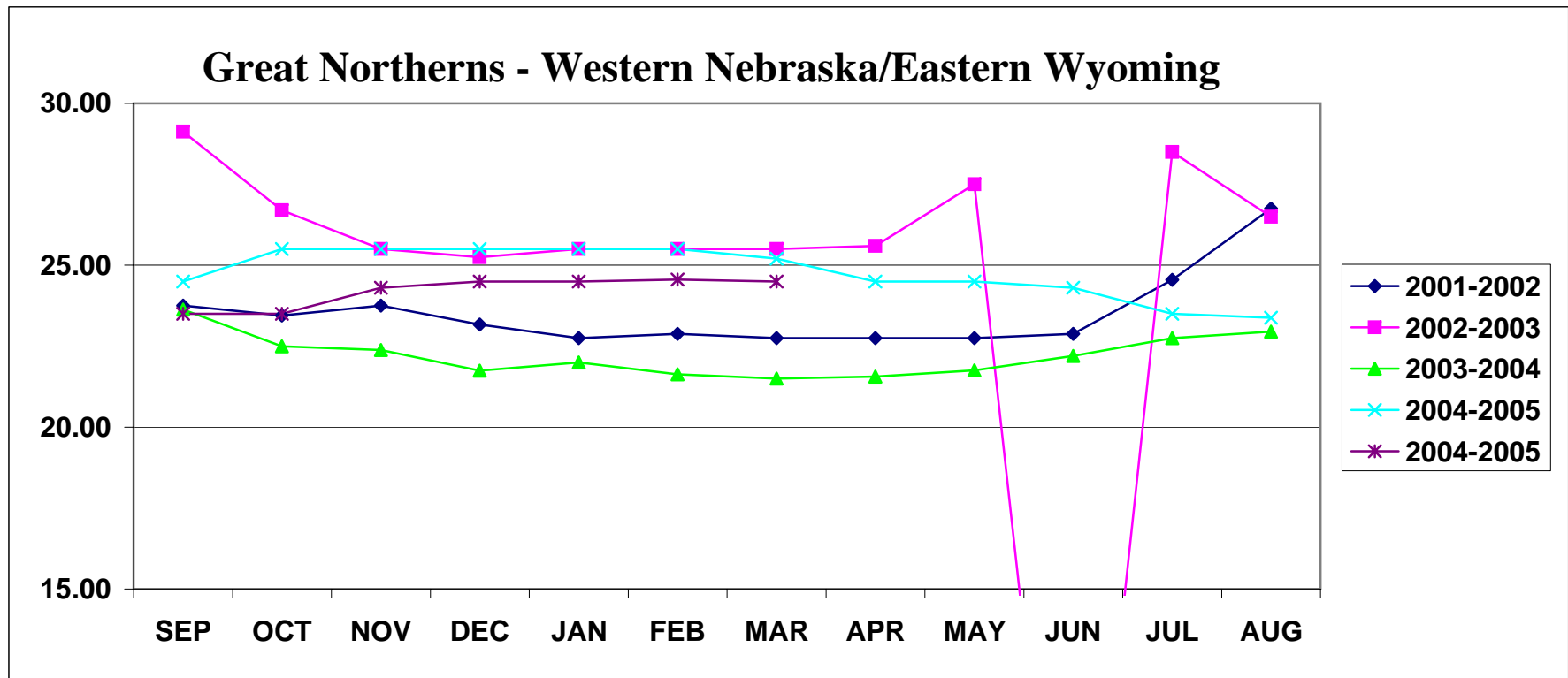
**Dealer Monthly Average Price
Per Cwt By Crop Year Fob
PEA BEANS - MICHIGAN No. 1's**

	SEP	OCT	NOV	DEC	JAN	FEB	MAR	APR	MAY	JUN	JUL	AUG	AVG
2001-2002	24.25	26.70	29.00	28.83	28.69	28.63	27.81	25.15	24.50	22.75	21.60	19.88	25.65
2002-2003	18.69	17.60	16.75	16.67	16.75	16.19	16.56	18.00	18.50	19.31	20.50	20.50	18.00
2003-2004	21.80	21.88	23.50	22.50	22.50	22.50	23.00	25.00	25.13	24.60	24.50	25.40	23.53
2004-2005	30.50	31.75	32.50	31.50	31.50	31.00	30.50	30.25	28.38	27.05	25.25	25.50	29.64
2005-2006	25.50	23.50	23.50	24.00	24.00	24.38	24.50						24.20



Dealer Monthly Average Price
Per Cwt By Crop Year Fob
GREAT NORTHERNS - WESTERN NEBRASKA/EASTERN WYOMING

	SEP	OCT	NOV	DEC	JAN	FEB	MAR	APR	MAY	JUN	JUL	AUG	AVG
2001-2002	23.75	23.45	23.75	23.17	22.75	22.88	22.75	22.75	22.75	22.88	24.55	26.75	23.52
2002-2003	29.13	26.70	25.50	25.25	25.50	25.50	25.50	25.60	27.50	NE	28.50	26.50	26.47
2003-2004	23.63	22.50	22.38	21.74	22.00	21.63	21.50	21.56	21.75	22.20	22.75	22.95	22.22
2004-2005	24.50	25.50	25.50	25.50	25.50	25.50	25.20	24.50	24.50	24.30	23.50	23.38	24.78
2004-2005	23.50	23.50	24.30	24.50	24.50	24.56	24.50						24.19



**Dealer Monthly Average Price
Per Cwt By Crop Year Fob**

	SEP	OCT	NOV	DEC	JAN	FEB	MAR	APR	MAY	JUN	JUL	AUG	AVG
PINTO - Northern Colorado													
2001-2002	24.50	25.50	26.06	26.25	32.25	35.50	35.50	35.20	35.00	34.75	33.70	32.50	31.39
2002-2003	28.25	25.00	23.75	23.75	23.00	22.63	21.88	21.55	21.00	20.75	21.60	21.25	22.87
2003-2004	22.00	20.63	20.13	20.50	20.50	20.94	22.35	23.56	23.63	23.60	23.69	24.80	22.19
2004-2005	32.13	34.56	38.90	38.38	38.00	37.25	36.20	34.63	34.25	33.50	33.50	34.10	35.45
2005-2006	24.25	23.25	24.00	23.33	23.25	23.50	23.50						23.58
PINTO - North Dakota/Minnesota													
2001-2002	20.17	21.60	25.31	27.00	31.19	35.50	36.13	34.10	33.25	33.00	30.00	22.00	29.10
2002-2003	20.31	18.15	17.75	18.50	17.50	17.06	16.50	17.20	17.75	18.25	18.90	18.50	18.03
2003-2004	18.65	17.88	17.94	19.17	19.06	19.38	20.35	21.69	21.81	21.70	21.31	23.06	20.17
2004-2005	31.13	33.75	39.90	38.13	37.50	36.06	33.50	31.63	30.50	27.25	25.88	20.90	32.18
2005-2006	18.56	17.75	19.35	18.17	17.94	18.50	18.50						18.40
PINTO - Idaho													
2001-2002	25.17	26.00	27.25	27.50	33.13	36.00	36.38	36.70	36.88	36.13	35.10	33.38	32.47
2002-2003	29.63	28.40	27.00	26.83	26.50	26.50	26.38	25.50	25.00	24.13	23.75	23.88	26.13
2003-2004	24.25	23.38	22.50	22.50	22.50	22.63	23.60	24.38	24.50	24.50	24.50	24.50	23.65
2004-2005	33.50	35.13	40.10	39.75	39.50	38.75	37.90	37.50	37.25	36.00	36.00	34.50	37.16
2005-2006	26.63	24.75	25.50	25.50	25.00	24.81	24.75						25.28
GREAT NORTHERN - Western Nebraska/Eastern Wyoming													
2001-2002	23.75	23.45	23.75	23.17	22.75	22.88	22.75	22.75	22.75	22.88	24.55	26.75	23.52
2002-2003	29.13	26.70	25.50	25.25	25.50	25.50	25.50	25.60	27.50	NE	28.50	26.50	26.47
2003-2004	23.63	22.50	22.38	21.75	22.00	21.63	21.50	21.56	21.75	22.20	22.75	22.95	22.22
2004-2005	24.50	25.50	25.50	25.50	25.50	25.50	25.20	24.50	24.50	24.30	23.50	23.38	24.78
2005-2006	23.50	23.50	24.30	24.50	24.50	24.56	24.50						24.19
SMALL RED - Idaho/Washington													
2001-2002	26.42	28.40	32.25	32.58	34.63	35.50	35.75	35.90	35.63	35.00	35.00	33.25	33.36
2002-2003	26.00	28.83	29.00	29.00	29.00	29.00	29.00	29.00	29.50	29.38	28.75	29.25	28.81
2003-2004	28.60	28.50	28.50	28.50	28.50	28.50	28.50	28.50	28.50	28.50	28.50	28.70	28.53
2004-2005	30.88	31.75	32.50	32.50	32.50	32.50	32.50	32.50	32.38	31.60	31.50	31.13	32.02
2005-2006	27.63	27.50	27.50	27.50	27.50	27.50	27.50						27.52
PINK - Idaho/Washington													
2001-2002	26.58	28.50	31.63	32.25	33.56	34.50	34.63	35.30	34.75	34.50	34.50	33.25	32.83
2002-2003	26.00	29.00	28.50	28.50	28.50	28.50	28.50	28.50	28.50	28.50	28.50	28.50	28.33
2003-2004	28.38	28.00	28.00	28.00	28.00	28.00	28.40	28.50	28.50	28.50	28.50	28.65	28.29
2004-2005	30.88	31.75	32.30	32.50	32.50	32.50	32.40	32.50	32.38	32.00	32.00	31.13	32.07
2005-2006	27.75	27.50	27.50	27.50	27.50	27.50	27.50						27.54

NE=Not Established
NA=Not Available
W=Withdrawn

Grower Monthly Average Price Per Cwt By Crop Year Fob

	SEP	OCT	NOV	DEC	JAN	FEB	MAR	APR	MAY	JUN	JUL	AUG	AVG
PINTO - Northern Colorado													
2001-2002	20.33	19.50	19.38	19.00	23.88	25.00	27.00	28.00	28.00	28.00	25.90	23.00	23.92
2002-2003	20.38	16.60	15.00	15.00	15.00	14.88	14.00	14.00	16.00	16.00	16.00	16.00	15.74
2003-2004	15.60	14.00	14.63	14.50	15.00	15.00	16.20	17.00	17.50	17.50	17.50	17.90	16.03
2004-2005	26.38	26.56	28.20	28.50	28.25	28.00	28.00	27.38	27.00	27.00	26.50	24.00	27.15
2005-2006	17.63	15.56	15.50	15.50	15.50	15.50	15.50						15.81
PINTO - North Dakota/Minnesota													
2001-2002	16.17	17.15	20.25	22.33	25.75	29.75	31.50	30.60	30.50	30.75	27.10	20.25	25.18
2002-2003	15.38	14.50	14.00	13.83	13.00	12.63	12.63	13.00	13.50	13.75	14.60	14.63	13.79
2003-2004	14.40	14.00	14.00	14.33	14.63	15.13	16.00	17.00	17.94	17.70	17.50	17.50	15.84
2004-2005	23.75	28.88	33.40	32.00	32.00	31.00	28.80	25.75	23.63	23.50	21.88	17.50	26.84
2005-2006	14.75	13.50	13.70	13.83	13.38	13.50	13.50						13.74
PINTO - Idaho													
2001-2002	19.83	20.00	20.38	21.00	24.38	27.75	29.75	29.50	29.50	29.50	29.50	29.50	25.88
2002-2003	21.00	19.60	18.50	18.50	18.00	18.38	17.50	17.50	18.00	18.00	18.00	18.06	18.42
2003-2004	19.13	17.75	16.50	16.50	17.50	18.00	18.50	19.00	19.13	19.50	19.50	19.50	18.38
2004-2005	25.25	26.13	29.40	30.00	30.00	30.00	29.50	29.00	28.75	28.00	28.00	28.00	28.50
2005-2006	19.38	18.13	18.40	18.00	18.00	18.00	18.00						18.27
GREAT NORTHERN - Western Nebraska/Eastern Wyoming													
2001-2002	16.50	16.50	16.38	16.33	16.00	16.00	16.00	16.00	16.00	16.00	17.20	19.00	16.49
2002-2003	20.00	18.70	18.00	18.00	18.00	18.00	18.00	18.30	19.38	21.00	21.80	20.00	19.10
2003-2004	17.20	15.88	15.00	15.00	15.00	15.00	15.00	15.00	15.00	15.00	15.00	15.00	15.26
2004-2005	16.42	17.50	17.50	17.50	17.50	17.50	17.50	16.50	16.50	16.50	16.50	16.50	16.99
2005-2006	16.31	15.56	15.60	16.00	16.00	16.00	16.00						15.92
SMALL RED - Idaho/Washington													
2001-2002	18.00	19.20	21.13	24.00	25.00	25.50	25.50	25.50	25.50	25.50	25.50	25.50	23.82
2002-2003	20.50	20.00	20.00	20.00	20.00	19.63	19.50	19.50	20.00	20.00	20.00	20.00	19.93
2003-2004	21.40	21.00	21.00	21.00	21.00	21.00	20.60	20.50	20.50	20.70	20.88	20.50	20.84
2004-2005	22.33	22.50	22.50	22.50	22.50	22.50	22.80	22.88	22.38	22.00	22.00	22.40	22.44
2005-2006	21.63	19.75	19.90	19.50	19.50	19.50	19.50						19.90
PINK - Idaho/Washington													
2001-2002	18.83	19.10	21.63	24.50	24.75	25.50	25.63	26.00	25.88	25.50	25.50	25.50	24.03
2002-2003	20.50	20.00	20.00	20.00	20.00	19.63	19.50	19.80	20.00	20.00	20.00	20.00	19.95
2003-2004	20.50	20.50	20.00	20.00	20.00	20.00	20.40	20.50	20.50	20.50	20.50	20.50	20.33
2004-2005	22.33	22.63	20.95	22.50	22.50	22.50	22.60	22.50	22.38	22.00	22.00	22.40	22.27
2005-2006	21.50	20.38	19.90	19.50	19.50	19.50	19.50						19.97

NE=Not Established

NA=Not Available

W=Withdrawn

**Dealer Monthly Average Price
Per Cwt By Crop Year Fob**

	SEP	OCT	NOV	DEC	JAN	FEB	MAR	APR	MAY	JUN	JUL	AUG	AVG
BLACK - Michigan													
2001-2002	33.50	36.60	37.63	38.00	39.84	40.56	41.16	40.60	38.88	38.00	36.50	28.00	37.44
2002-2003	19.75	17.75	17.56	18.00	18.50	18.00	17.69	17.80	18.13	20.13	23.75	23.81	19.24
2003-2004	22.50	22.63	23.50	23.50	23.50	23.50	24.30	26.94	27.38	26.50	25.63	25.80	24.64
2004-2005	28.56	28.00	26.50	26.50	26.88	27.50	27.50	26.63	25.75	24.70	24.63	25.00	26.51
2005-2006	24.50	24.63	27.17	28.00	29.25	29.75	30.38						27.67
BLACK - New York													
2001-2002	NE	35.25	37.50	35.83	37.00	38.00	37.31	36.85	36.00	35.38	34.25	31.50	35.90
2002-2003	20.88	19.85	19.50	19.50	19.25	19.25	19.25	19.25	19.25	19.94	22.90	23.13	20.16
2003-2004	22.38	22.50	23.25	23.50	23.50	23.50	23.95	25.38	25.31	25.50	25.38	24.63	24.07
2004-2005	28.00	26.31	26.50	26.50	26.50	26.50	26.50	26.38	25.63	24.60	24.50	24.40	26.03
2005-2006	24.38	24.50	25.33	26.83	28.00	28.50	29.88						26.77
CRANBERRY - Michigan													
2001-2002	32.50	35.10	36.31	36.50	36.50	36.50	36.50	NE	34.50	34.50	34.50	NE	35.34
2002-2003	26.50	25.70	25.50	25.50	24.50	24.31	24.25	24.40	23.75	23.69	23.50	23.38	24.58
2003-2004	28.50	28.50	28.50	28.50	28.50	28.50	28.40	28.38	28.88	28.90	28.69	27.83	28.51
2004-2005	33.63	33.63	34.80	34.50	34.25	33.75	34.10	34.38	34.00	NE	NE	NE	34.12
2005-2006	28.00	29.19	31.00	NE	NE	NE	NE						29.40
LIGHT RED KIDNEY - Michigan													
2001-2002	26.50	30.30	35.88	35.67	36.00	36.13	36.00	35.55	35.50	34.88	32.10	34.00	34.04
2002-2003	29.13	27.70	27.50	28.08	28.50	28.69	30.00	30.50	31.50	31.50	31.50	31.50	29.68
2003-2004	29.10	28.50	29.00	36.50	29.50	29.50	29.50	29.88	30.25	30.60	30.50	30.67	30.29
2004-2005	37.25	37.00	36.60	36.50	37.25	37.50	36.50	36.50	36.25	35.50	35.00	33.00	36.24
2005-2006	28.38	28.25	28.50	28.50	28.38	28.00	28.00						28.29
LIGHT RED KIDNEY - New York													
2001-2002	26.50	30.48	35.06	35.92	36.50	37.38	37.00	36.50	35.94	34.44	33.00	31.88	34.22
2002-2003	31.00	28.55	28.50	28.50	28.50	29.13	30.44	30.70	31.00	31.38	31.50	31.50	30.06
2003-2004	29.10	28.50	28.88	29.50	29.50	29.50	29.50	29.88	30.25	30.30	30.50	31.00	29.70
2004-2005	NE	36.50	36.50	36.50	36.50	36.50	36.50	36.00	35.38	35.00	35.00	33.75	35.83
2005-2006	28.25	28.50	28.50	28.50	28.38	28.00	28.00						28.30
LIGHT RED KIDNEY - Colorado													
2001-2002	26.75	30.20	33.25	34.67	35.69	36.00	36.38	36.20	36.13	36.25	36.25	36.00	34.48
2002-2003	32.00	33.30	32.50	32.50	32.33	32.13	32.38	31.70	31.50	31.25	31.00	31.00	31.97
2003-2004	30.50	29.50	29.25	29.50	29.50	29.50	29.50	29.50	29.56	30.25	30.50	31.10	29.85
2004-2005	36.25	37.50	37.50	38.50	38.50	38.50	37.80	37.50	37.38	36.60	36.50	34.20	37.23
2005-2006	29.13	28.50	28.50	28.50	28.50	28.50	28.13						28.54

NE=Not Established
NA=Not Available
W=Withdrawn

Grower Monthly Average Price Per Cwt By Crop Year Fob

	SEP	OCT	NOV	DEC	JAN	FEB	MAR	APR	MAY	JUN	JUL	AUG	AVG
BLACK - Michigan													
2001-2002	25.75	28.65	31.50	33.00	33.38	35.00	35.00	35.00	35.00	35.00	33.38	NE	32.79
2002-2003	14.00	12.00	11.50	11.50	11.50	11.50	11.50	12.20	12.50	13.63	16.90	17.50	13.02
2003-2004	17.50	17.63	18.25	18.25	18.25	18.13	19.55	21.00	21.38	20.10	20.00	20.00	19.17
2004-2005	21.00	19.13	18.50	18.50	18.88	20.63	20.60	19.75	19.31	18.55	18.88	18.80	19.38
2005-2006	18.50	18.50	19.90	20.50	21.50	21.50	21.88						20.33
BLACK - New York													
2001-2002	25.50	25.50	29.00	27.50	27.25	27.00	27.00	29.00	29.00	28.75	28.00	NE	27.59
2002-2003	NE	13.83	13.50	13.50	13.50	13.50	13.50	13.80	14.00	14.25	16.90	17.50	14.34
2003-2004	17.25	17.25	17.50	17.50	17.50	17.50	18.40	19.25	20.00	19.80	19.50	19.50	18.41
2004-2005	NE	19.50	19.50	19.50	19.13	19.50	19.50	19.50	19.38	19.00	19.00	18.90	19.31
2005-2006	18.25	18.00	18.30	18.50	19.38	19.38	20.50						18.90
CRANBERRY - Michigan													
2001-2002	26.50	27.50	28.00	28.00	28.00	28.00	28.00	NE	NE	NE	NE	NE	27.71
2002-2003	20.50	17.70	17.50	17.50	17.00	17.00	17.00	17.00	NE	NE	NE	NE	17.65
2003-2004	23.00	23.00	21.00	20.50	20.63	21.00	21.30	21.75	22.00	22.00	NE	NE	21.62
2004-2005	25.75	24.50	24.50	24.50	24.88	25.00	25.00	25.00	25.00	NE	NE	NE	24.90
2005-2006	20.00	20.88	23.75	NE	NE	NE	NE						21.54
LIGHT RED KIDNEY - Michigan													
2001-2002	20.50	23.30	25.25	25.67	25.00	28.00	28.00	28.00	27.75	27.00	27.00	27.00	26.04
2002-2003	22.00	22.00	21.50	21.50	21.50	22.00	21.50	21.70	22.00	NE	NE	NE	21.74
2003-2004	22.63	23.31	22.75	22.75	22.75	22.50	22.50	23.00	23.25	24.20	24.38	24.00	23.17
2004-2005	28.25	27.50	27.50	27.50	27.50	27.50	27.50	27.50	27.38	27.00	27.00	26.00	27.34
2005-2006	22.75	21.63	21.50	21.50	21.88	21.63	21.25						21.73
LIGHT RED KIDNEY - New York													
2001-2002	19.75	22.30	23.75	24.83	24.75	25.00	25.75	26.80	27.00	27.00	26.00	26.00	24.91
2002-2003	21.50	22.30	21.88	21.50	21.50	22.13	22.50	22.50	22.75	23.00	23.00	23.00	22.30
2003-2004	22.50	22.25	22.50	22.50	22.50	22.50	22.60	23.00	23.00	22.80	22.50	22.63	22.61
2004-2005	NE	28.63	28.20	28.25	28.00	28.00	27.70	27.50	27.38	27.00	27.00	27.00	27.70
2005-2006	22.00	22.00	22.00	22.00	21.88	21.50	21.13						21.79
LIGHT RED KIDNEY - Colorado													
2001-2002	19.50	21.00	22.00	22.50	26.13	24.00	27.00	28.00	28.00	28.00	28.00	28.00	25.18
2002-2003	23.00	22.50	21.50	21.50	21.50	21.50	21.50	21.50	21.50	21.50	22.40	23.75	21.97
2003-2004	21.90	21.38	21.00	21.00	21.00	21.00	21.00	21.00	21.25	21.50	21.50	22.10	21.30
2004-2005	25.75	28.00	28.00	28.00	28.00	28.00	28.00	28.00	28.00	28.00	28.00	26.75	27.71
2005-2006	22.88	20.50	20.00	20.00	20.00	20.00	20.00						20.48

NE=Not Established

NA=Not Available

W=Withdrawn

Dealer Monthly Average Price

Per Cwt By Crop Year Fob

	SEP	OCT	NOV	DEC	JAN	FEB	MAR	APR	MAY	JUN	JUL	AUG	AVG
SMALL WHITE - Idaho/Washington													
2001-2002	26.83	27.90	30.50	30.50	32.00	33.50	33.50	NE	NE	NE	NE	NE	30.68
2002-2003	NE	26.00	26.19	26.08	26.00	26.00	25.88	25.50	25.50	NE	NE	NE	25.89
2003-2004	26.56	26.56	26.75	26.75	26.81	27.00	27.00	27.00	27.00	27.00	NE	NE	26.84
2004-2005	NE	34.13	34.00	NE	NE	33.00	33.30	NE	NE	NE	NE	NE	33.61
2005-2006	29.13	29.38	29.50	NE	NE	NE	29.00						29.25
PEA BEAN - Michigan No 1's													
2001-2002	24.25	26.70	29.00	28.83	28.69	28.63	27.81	25.15	24.50	22.75	21.60	19.88	25.65
2002-2003	18.69	17.60	16.75	16.67	16.75	16.19	16.56	18.00	18.50	19.31	20.50	20.50	18.00
2003-2004	21.80	21.88	23.50	22.50	22.50	22.50	23.00	25.00	25.13	24.60	24.50	25.40	23.53
2004-2005	30.50	31.75	32.50	31.50	31.50	31.00	30.50	30.25	28.38	27.05	25.25	25.50	29.64
2005-2006	25.50	23.50	23.50	24.00	24.00	24.38	24.50						24.20
PEA BEAN - North Dakota/Minnesota													
2001-2002	23.13	24.90	28.00	27.17	27.63	27.00	26.50	23.00	21.63	20.38	19.70	18.00	23.92
2002-2003	17.13	15.70	15.38	15.50	15.50	15.19	15.38	16.50	17.00	17.75	19.40	19.63	16.67
2003-2004	19.80	19.75	20.63	20.50	20.50	20.50	21.05	22.56	22.50	22.50	22.50	22.50	21.27
2004-2005	29.75	30.50	30.70	30.50	29.63	29.50	29.00	27.38	27.25	25.60	23.00	23.25	28.01
2005-2006	23.81	22.88	22.80	23.67	23.63	22.50	22.50						23.11
DARK RED KIDNEY - Michigan													
2001-2002	27.17	35.50	43.25	41.00	41.25	41.50	41.38	40.90	37.50	37.00	37.00	28.17	37.64
2002-2003	27.81	25.90	24.88	24.50	24.50	24.50	25.19	26.10	27.38	29.75	30.70	30.13	26.78
2003-2004	28.25	27.50	27.50	28.50	28.50	28.79	29.00	30.50	30.63	31.00	31.13	31.50	29.40
2004-2005	36.50	36.25	35.50	35.50	35.50	36.00	35.10	35.00	34.75	34.00	34.00	32.30	35.03
2005-2006	28.38	28.25	28.50	28.50	27.63	27.50	27.80						28.08
DARK RED KIDNEY - Minnesota/Wisconsin													
2001-2002	26.67	35.25	41.50	42.00	41.38	41.50	41.00	39.60	37.13	36.75	35.00	NE	37.98
2002-2003	25.19	23.00	22.50	22.67	22.50	22.75	23.94	25.60	27.50	29.50	30.00	30.25	25.45
2003-2004	27.30	26.50	26.50	27.50	27.75	28.50	29.05	30.50	30.75	31.40	31.50	31.50	29.06
2004-2005	37.00	36.44	35.60	35.25	34.81	34.56	34.25	34.31	34.25	33.10	32.50	31.00	34.42
2005-2006	27.13	26.94	26.50	26.50	25.50	25.50	25.63						26.24
GARBANZO - Idaho/Washington													
2001-2002	22.58	23.00	23.31	22.33	21.81	22.13	21.33	21.50	21.38	21.00	21.13	NE	21.95
2002-2003	22.75	24.35	25.13	24.50	NE	24.33	25.00	24.50	24.63	25.33	25.50	26.50	24.77
2003-2004	27.80	26.88	27.50	27.50	29.00	29.38	30.00	31.33	30.81	31.50	32.25	32.00	29.66
2004-2005	35.38	39.38	39.40	38.75	39.50	39.17	NE	NE	NE	NE	38.00	39.50	38.64
2005-2006	37.25	38.38	39.75	42.00	NE	42.00	NE						39.88

NE=Not Established

NA=Not Available

W=Withdrawn

Grower Monthly Average Price

Per Cwt By Crop Year Fob

	SEP	OCT	NOV	DEC	JAN	FEB	MAR	APR	MAY	JUN	JUL	AUG	AVG
SMALL WHITE - Idaho/Washington													
2001-2002	19.33	19.60	20.13	20.50	22.38	24.00	24.00	NE	NE	NE	NE	NE	21.42
2002-2003	20.00	20.00	20.00	19.83	20.00	19.88	20.00	20.00	20.00	19.88	19.70	20.00	19.94
2003-2004	19.13	19.50	20.00	20.00	20.00	20.00	20.00	20.00	19.75	19.83	NE	NE	19.82
2004-2005	NE	23.67	24.00	NE	NE	24.00	24.00	NE	NE	NE	NE	22.00	23.53
2005-2006	22.00	22.00	22.33	NE	NE	NE	NE						22.11
PEA BEAN - Michigan No 1's													
2001-2002	18.25	19.50	21.75	23.17	23.63	23.75	23.00	20.55	20.00	20.00	18.20	17.00	20.73
2002-2003	13.75	12.50	11.00	11.00	11.00	10.44	10.25	11.60	12.00	12.75	15.00	15.50	12.23
2003-2004	16.00	16.50	17.75	17.67	17.50	17.50	18.60	19.75	20.00	20.20	20.50	20.33	18.53
2004-2005	25.13	26.38	26.30	26.00	26.00	26.00	26.00	25.88	25.38	24.60	21.00	20.00	24.89
2005-2006	20.13	18.50	18.50	18.50	18.50	18.50	19.25						18.84
PEA BEAN - North Dakota/Minnesota													
2001-2002	17.25	18.33	21.00	21.50	21.94	22.25	21.81	17.90	17.00	17.00	15.90	15.50	18.95
2002-2003	12.75	10.60	10.00	10.00	10.00	9.13	9.25	10.60	11.50	12.00	13.60	14.00	11.12
2003-2004	14.80	15.38	15.50	15.50	15.50	15.50	16.60	17.88	18.50	18.50	18.50	18.50	16.72
2004-2005	24.50	25.50	25.50	25.50	24.75	24.50	24.80	24.63	24.38	23.60	NE	20.00	24.33
2005-2006	19.75	18.13	17.80	18.00	18.00	18.00	18.00						18.24
DARK RED KIDNEY - Michigan													
2001-2002	20.17	24.67	29.75	28.00	28.00	28.00	28.00	28.00	28.00	28.00	28.00	NA	27.14
2002-2003	20.00	18.80	17.00	17.00	17.00	18.75	20.00	20.00	22.50	22.75	23.00	23.00	19.98
2003-2004	22.50	22.13	21.75	22.00	22.13	22.50	22.70	23.00	23.25	24.00	24.00	24.00	22.83
2004-2005	28.75	28.38	27.50	27.50	27.50	26.50	26.20	26.00	26.00	NE	NE	23.00	26.73
2005-2006	23.00	22.63	22.50	22.50	22.13	21.50	21.00						22.18
DARK RED KIDNEY - Minnesota/Wisconsin													
2001-2002	19.83	24.67	29.50	29.50	29.25	29.50	29.50	29.10	29.00	29.00	29.00	NE	27.99
2002-2003	20.33	18.50	17.00	17.00	17.00	17.00	17.63	18.00	21.50	22.50	23.00	23.00	19.37
2003-2004	22.20	21.38	21.00	21.50	21.75	22.50	22.90	24.00	24.50	24.50	24.50	24.50	22.94
2004-2005	29.25	29.13	28.90	28.50	28.50	27.75	26.00	25.00	25.00	NE	NE	26.00	27.40
2005-2006	22.63	21.50	21.20	20.50	20.50	20.50	20.75						21.08
GARBANZO - Idaho/Washington													
2001-2002	17.50	17.50	17.19	16.17	15.50	15.25	15.00	15.30	15.50	15.50	16.00	NE	16.04
2002-2003	17.00	17.80	18.75	18.25	NE	NE	18.00	18.00	18.50	19.33	19.67	20.50	18.58
2003-2004	21.40	21.50	20.75	21.25	21.00	22.88	23.60	24.06	24.13	24.75	24.75	24.63	22.89
2004-2005	26.75	29.75	29.90	29.50	29.38	29.50	NE	NE	NE	NE	25.00	26.50	28.29
2005-2006	27.38	28.25	30.00	NE	NE	30.00	NE						28.91

NE=Not Established

NA=Not Available

W=Withdrawn

Dealer Monthly Average Price Per Cwt By Crop Year Fob

	SEP	OCT	NOV	DEC	JAN	FEB	MAR	APR	MAY	JUN	JUL	AUG	AVG
AUSTRIAN WINTER PEA - Idaho/Washington													
2001-2002	16.75	NE	NE	NE	NE	NE	NE	NE	NE	NE	NE	14.00	15.38
2002-2003	14.56	14.83	17.75	17.25	NE	18.75	19.38	NE	18.00	18.00	18.00	18.00	17.45
2003-2004	18.05	18.06	17.97	18.00	NE	NE	NE	18.50	18.44	NE	18.06	14.50	17.70
2004-2005	14.92	14.75	14.88	15.25	15.13	14.56	14.00	14.00	NE	13.50	NE	14.88	14.59
2005-2006	12.88	NE	NE	NE	NE	NE	NE						12.88
LENTIL - Idaho/Washington													
2001-2002	13.83	13.75	13.75	13.67	13.06	12.88	12.91	13.60	13.50	13.47	13.33	13.47	13.44
2002-2003	15.25	17.63	18.63	19.46	21.92	24.00	25.16	25.30	24.88	25.38	21.10	18.56	21.44
2003-2004	20.55	22.50	22.38	22.50	23.38	24.38	25.70	26.75	26.38	20.65	18.75	18.10	22.67
2004-2005	20.94	22.50	21.95	20.63	19.50	18.75	18.35	17.56	16.44	15.85	15.69	15.60	18.65
2005-2006	15.75	16.06	15.80	15.75	15.56	15.25	15.38						15.65
GREEN SPLIT PEA - Idaho/Washington													
2001-2002	11.83	12.68	13.16	13.25	13.41	13.75	13.53	13.63	13.53	13.63	13.55	13.41	13.28
2002-2003	14.03	15.85	16.50	16.75	17.67	17.81	18.38	18.70	18.63	18.63	14.19	14.00	16.76
2003-2004	14.80	15.56	16.25	16.25	16.56	17.38	17.95	18.25	18.63	15.05	13.75	13.20	16.14
2004-2005	13.56	13.69	13.55	13.50	13.38	13.16	12.50	13.00	12.69	12.15	11.81	11.60	12.88
2005-2006	11.00	10.88	10.75	10.75	10.88	11.44	11.75						11.06
WHOLE GREEN PEA - Idaho/Washington													
2001-2002	9.58	9.80	10.13	10.25	10.44	10.59	10.91	11.20	11.25	11.16	10.85	10.75	10.58
2002-2003	11.13	12.83	13.50	13.75	14.58	14.63	15.69	15.50	15.75	15.75	14.70	12.16	14.16
2003-2004	12.25	12.75	13.81	14.00	14.31	14.88	15.25	15.75	15.63	12.50	11.34	10.55	13.59
2004-2005	10.58	10.53	10.45	10.25	10.25	10.19	9.85	9.69	9.25	8.73	8.53	8.40	9.73
2005-2006	8.03	7.81	7.68	7.67	8.09	8.50	8.75						8.08
YELLOW SPLIT PEA - Idaho/Washington													
2001-2002	11.83	12.63	13.50	13.92	14.25	14.28	14.38	14.35	14.38	14.25	14.25	13.54	13.80
2002-2003	13.81	15.15	15.56	14.92	16.83	17.06	17.25	17.25	17.25	17.25	NE	12.75	15.92
2003-2004	13.60	14.00	14.81	15.00	15.50	15.88	16.05	16.25	16.25	14.40	13.00	12.20	14.75
2004-2005	12.38	12.38	12.75	12.25	12.25	12.44	12.10	11.75	11.56	11.25	11.25	11.25	11.97
2005-2006	11.00	10.75	10.75	10.75	10.83	11.00	11.06						10.88
WHOLE YELLOW PEA - Idaho/Washington													
2001-2002	9.50	9.83	10.38	10.50	11.31	11.53	11.56	12.10	12.06	11.75	11.85	11.06	11.12
2002-2003	10.88	12.20	12.56	13.83	13.42	13.50	13.94	14.20	14.19	13.75	NE	10.25	12.97
2003-2004	11.30	11.75	12.00	12.25	12.56	13.19	13.55	13.50	14.00	11.70	10.50	9.92	12.19
2004-2005	9.69	9.75	10.00	9.75	9.69	9.69	9.20	8.75	8.44	8.35	8.25	8.20	9.15
2005-2006	7.75	7.75	7.50	7.50	8.00	8.00	8.13						7.80

NE=Not Established
NA=Not Available
W=Withdrawn

Grower Monthly Average Price Per Cwt By Crop Year Fob

	SEP	OCT	NOV	DEC	JAN	FEB	MAR	APR	MAY	JUN	JUL	AUG	AVG
AUSTRIAN WINTER PEA - Idaho/Washington													
2001-2002	11.00	11.00	11.00	11.00	11.00	11.00	11.00	NA	11.00	11.00	NE	9.00	10.80
2002-2003	9.59	9.20	9.83	10.50	10.50	11.00	11.00	11.00	11.00	10.00	10.00	11.00	10.39
2003-2004	11.00	11.00	11.00	11.00	11.00	NE	NE	11.00	11.00	10.20	9.50	9.50	10.62
2004-2005	10.00	10.00	9.90	9.50	9.75	9.38	8.20	8.00	NE	NE	NE	NE	9.34
2005-2006	NE	NE	NE	NE	NE	6.75	6.75						6.75
LENTIL - Idaho/Washington													
2001-2002	9.83	9.75	9.72	9.71	9.44	9.06	9.03	9.75	9.59	9.44	9.40	9.50	9.52
2002-2003	10.75	12.85	13.81	14.25	15.42	17.63	18.63	18.70	18.63	18.56	15.20	14.50	15.74
2003-2004	14.85	16.50	16.88	16.50	17.13	19.00	20.90	21.25	20.38	15.80	14.19	13.25	17.22
2004-2005	14.38	15.56	15.95	15.38	14.69	14.19	13.45	12.56	12.19	11.40	11.25	11.25	13.52
2005-2006	11.34	11.25	10.78	10.08	10.38	10.31	10.25						10.63
WHOLE GREEN PEA - Idaho/Washington													
2001-2002	6.21	6.35	6.56	6.88	7.04	7.06	7.13	7.40	7.25	7.25	7.25	7.13	6.96
2002-2003	7.38	7.68	7.91	8.33	9.08	9.81	10.88	10.60	10.44	10.13	9.30	7.56	9.09
2003-2004	7.63	8.09	8.84	9.08	9.56	9.94	10.50	10.94	11.25	8.43	7.38	6.45	9.01
2004-2005	6.41	6.66	6.93	6.69	6.63	6.56	6.03	5.69	5.47	5.38	5.31	5.15	6.08
2005-2006	4.84	4.81	4.80	4.75	4.97	5.31	5.50						5.00
WHOLE YELLOW PEA - Idaho/Washington													
2001-2002	6.17	6.25	6.56	6.79	7.04	7.25	7.31	7.68	7.66	7.59	7.38	6.50	7.02
2002-2003	6.72	7.10	7.34	7.58	7.42	7.94	8.03	8.50	8.75	8.67	8.44	6.63	7.76
2003-2004	6.43	6.75	7.53	7.75	7.91	8.72	9.03	9.25	9.42	7.73	7.13	6.08	7.81
2004-2005	5.97	6.25	6.43	6.25	6.00	6.00	5.73	5.56	5.59	5.55	5.25	5.15	5.81
2005-2006	4.66	4.63	4.63	4.63	4.75	4.97	5.00						4.75

NE=Not Established
NA=Not Available
W=Withdrawn

**Dealer Monthly Average Price
Per Cwt By Crop Year Fob**

	SEP	OCT	NOV	DEC	JAN	FEB	MAR	APR	MAY	JUN	JUL	AUG	AVG
BABY LIMA - California													
2001-2002	25.96	25.73	31.16	31.17	32.00	32.69	36.38	37.18	37.88	37.94	38.25	38.44	33.73
2002-2003	38.75	33.48	32.17	31.50	31.50	31.50	31.75	31.50	31.38	31.50	31.20	31.13	32.28
2003-2004	31.55	31.38	31.19	31.25	31.13	31.25	31.15	31.19	30.94	32.65	35.00	39.38	32.34
2004-2005	42.00	42.00	41.20	41.00	41.06	41.31	41.50	41.69	42.00	42.00	42.00	42.10	41.66
2005-2006	37.83	36.25	36.85	37.25	37.38	36.88	37.13						37.08
LARGE LIMA - California													
2001-2002	35.67	39.60	42.56	42.67	42.13	42.00	42.38	42.63	42.50	42.72	42.55	42.44	41.65
2002-2003	42.75	42.55	42.38	42.58	42.50	42.50	42.50	42.50	42.31	42.06	41.80	41.50	42.33
2003-2004	42.25	43.06	42.25	42.58	42.31	42.25	42.10	42.25	42.13	42.35	42.31	42.90	42.40
2004-2005	43.19	43.00	43.10	43.38	43.50	43.81	43.80	43.50	43.50	43.55	43.81	44.00	43.51
2005-2006	44.38	45.38	45.95	46.25	46.88	46.75	47.38						46.14
BLACKEYE - California													
2001-2002	26.17	28.05	28.92	29.17	30.06	30.56	30.81	30.70	31.19	31.31	31.30	30.94	29.93
2002-2003	31.31	32.90	33.31	33.33	33.63	35.50	35.81	35.44	35.75	36.25	NE	36.00	34.48
2003-2004	36.00	30.50	30.00	30.00	29.88	29.81	29.90	29.50	28.81	28.40	29.00	29.60	30.12
2004-2005	29.81	30.00	28.45	30.25	30.50	31.17	31.50	31.75	32.50	32.50	33.31	33.65	31.28
2005-2006	34.75	35.13	36.48	41.50	41.88	43.25	45.75						39.82
GARBANZO - California													
2001-2002	27.50	27.50	27.00	27.00	26.00	27.00	25.00	27.00	NE	NE	NE	NE	26.75
2002-2003	25.00	25.00	NE	NE	NE	NE	NE	NE	NE	NE	NE	30.33	26.78
2003-2004	29.75	NE	NE	30.00	NE	NE	NE	NE	NE	NE	31.50	32.00	30.81
2004-2005	NE	NE	NE	NE	NE	NE	NE	41.50	NE	NE	36.50	37.13	38.38
2005-2006	36.50	39.50	39.50	NE	NE	NE	NE						38.50

NE=Not Established
NA=Not Available
W=Withdrawn

Grower Monthly Average Price Per Cwt By Crop Year Fob

	SEP	OCT	NOV	DEC	JAN	FEB	MAR	APR	MAY	JUN	JUL	AUG	AVG
BABY LIMA - California													
2001-2002	24.00	26.70	29.38	29.33	30.25	31.75	34.88	35.40	36.44	36.75	37.00	37.00	32.41
2002-2003	31.75	31.20	30.25	29.92	30.00	30.06	31.38	29.95	30.00	30.00	30.00	30.00	30.38
2003-2004	30.00	30.00	30.00	30.00	30.00	30.00	30.00	30.00	30.25	31.30	33.50	37.25	31.03
2004-2005	39.50	39.50	39.00	39.00	39.13	39.63	39.60	40.00	40.00	40.00	40.00	39.95	39.61
2005-2006	36.17	34.00	34.50	34.67	35.00	35.00	35.25						34.94
LARGE LIMA - California													
2001-2002	33.33	37.95	40.25	40.00	40.13	40.00	40.00	40.60	41.25	41.00	41.00	41.00	39.71
2002-2003	40.88	41.00	41.00	40.67	40.50	40.75	41.13	41.00	40.94	41.00	41.00	41.00	40.91
2003-2004	41.50	41.69	41.00	41.00	41.00	41.00	41.00	41.00	41.00	41.00	41.00	41.90	41.17
2004-2005	41.50	41.50	41.80	41.75	42.00	42.00	41.90	42.00	42.00	42.00	42.00	42.30	41.90
2005-2006	42.75	43.25	43.60	44.33	45.00	45.00	45.25						44.17
BLACKEYE - California													
2001-2002	24.50	25.70	27.33	27.33	28.13	28.38	28.38	28.50	28.88	29.00	28.50	28.50	27.76
2002-2003	29.75	31.45	31.38	31.33	32.08	33.25	34.67	34.06	34.25	34.50	35.50	NE	32.93
2003-2004	NE	29.00	28.25	28.00	28.00	28.00	28.00	28.00	28.00	27.90	27.63	28.00	28.07
2004-2005	28.00	28.06	28.45	28.50	28.50	28.50	28.50	29.50	30.50	30.50	31.38	31.75	29.35
2005-2006	32.83	33.19	34.00	40.00	40.00	40.25	NE						36.71
GARBANZO - California													
2001-2002	25.50	25.20	25.50	NE	22.00	NE	NE	NE	NE	NE	NE	NE	24.55
2002-2003	22.50	22.50	NE	21.00	NE	NE	NE	28.00	NE	NE	NE	25.00	23.80
2003-2004	27.38	NE	28.00	28.00	NE	NE	28.00	NE	NE	NE	29.50	30.25	28.52
2004-2005	33.75	NE	38.00	NE	NE	NE	39.00	NE	NE	NE	NE	32.50	35.81
2005-2006	33.25	NE	NE	NE	NE	NE	NE						33.25

NE=Not Established
NA=Not Available
W=Withdrawn

Dry Edible Beans, U.S. Production by Commercial Class (1,000 Cwt.)

Class	2005	2004	2003	2002	2001	5 Year Average
Pea Bean, (Navy)	3,951	2,142	2,514	5,389	2,311	3,261
Great Northern	1,560	951	2,216	1,558	2,108	1,679
Small White	47	66	55	68	39	55
Pinto	13,110	7,814	10,453	13,188	8,721	10,657
Red Kidney	2,062	1,488	1,940	2,343	1,503	1,867
Pink	662	521	612	596	326	543
Small Red	903	601	581	592	172	570
Cranberry	162	180	190	359	147	208
Black	1,797	1,870	1,263	3,120	783	1,767
Large Lima	310	307	369	334	326	329
Baby Lima	368	267	325	501	235	339
Blackeye	400	384	785	543	553	533
Garbanzo	1,098	593	417	861	1,612	916
Other	754	604	772	860	747	747
Total	27,184	17,788	22,492	30,312	19,583	23,472

Source: USDA, NASS. *Subject to revision.

Canadian Crop Production

Dry White Beans

PROVINCE	Harvested Acres (1,000)				Production (1,000MT)			
	2005	2004	2003	2002	2005	2004	2003	2002
Alberta	0.00	0.00	15.07	15.07	0.00	0.00	17.20	13.60
Manitoba	80.06	55.10	109.96	170.00	34.00	20.40	124.70	124.70
Ontario	89.94	60.05	55.10	85.00	83.90	51.70	49.90	71.40
Quebec	0.00	0.00	3.95	6.67	0.00	0.00	3.20	5.80
TOTAL	170.00	115.15	184.09	276.75	117.90	72.10	195.00	215.50

Colored Beans

PROVINCE	Harvested Acres (1,000)				Production (1,000MT)			
	2005	2004	2003	2002	2005	2004	2003	2002
Alberta	58.81	46.95	37.07	24.96	57.80	43.10	43.10	18.10
Manitoba	79.57	55.10	109.96	140.11	29.80	18.10	106.60	106.60
Ontario	100.08	64.99	49.91	75.17	95.30	60.30	47.60	54.40
Quebec	20.26	19.77	19.77	14.83	18.20	20.00	20.00	12.80
TOTAL	258.71	186.81	216.71	255.06	201.10	141.50	217.30	191.90

Dry Peas

PROVINCE	Harvested Acres (1,000)				Production (1,000MT)			
	2005	2004	2003	2002	2005	2004	2003	2002
Alberta	530.03	655.06	604.90	440.09	617.50	698.10	507.90	221.60
British Columbia	4.94	3.95	9.88	4.94	5.80	3.40	9.50	3.50
Manitoba	105.02	144.80	134.92	199.66	62.50	160.00	137.40	176.90
Saskatchewan	2620.00	2519.93	2389.95	1949.87	2414.00	2476.70	1469.60	963.50
TOTAL	3259.99	3323.74	3139.65	2594.55	3099.80	3338.20	2124.40	1365.50

Lentils

PROVINCE	Harvested Acres (1,000)				Production (1,000MT)			
	2005	2004	2003	2002	2005	2004	2003	2002
Alberta	19.77	17.79	14.83	5.93	14.10	11.30	6.90	1.90
British Columbia	0.00	0.00	0.00	0.00	0.00	0.00	0.00	0.00
Manitoba	0.00	4.94	3.95	0.00	0.00	0.80	2.70	0.00
Saskatchewan	2109.99	1830.02	1304.94	950.10	1263.80	948.90	510.30	351.90
TOTAL	2129.75	1852.76	1323.71	956.03	1277.90	961.00	519.90	353.80

Chickpeas

PROVINCE	Harvested Acres (1,000)				Production (1,000MT)			
	2005	2004	2003	2002	2005	2004	2003	2002
Alberta	29.90	15.07	24.96	29.90	19.60	8.60	13.20	15.90
Saskatchewan	149.99	80.06	129.97	349.89	84.30	42.60	54.40	140.60
TOTAL	179.89	95.13	154.93	379.79	103.90	51.20	67.60	156.50

Source: Statistics Canada, Field Crop Reports

Dry Edible Beans, Production by Commercial Class (1,000 cwt)

SMALL RED

State	2005	2004	2003	2002	2001
ID	193	192	200	226	83
MI	540	261	280	208	27
MN	29	13	15	28	0
ND	63	54	0	0	0
WA	78	81	86	130	62
Total	903	601	581	592	172

SMALL WHITE

State	2005	2004	2003	2002	2001
ID	24	50	39	38	20
OR	9	0	10	12	11
WA	14	16	6	18	8
Total	47	66	55	68	39

GREAT NORTHERN

State	2005	2004	2003	2002	2001
ID	51	58	79	65	88
MI	30	16	134	60	20
MN	0	0	25	12	13
NE	1360	827	1743	1286	1786
ND	70	29	137	74	128
WA	15	0	20	33	27
WY	34	21	78	28	46
Total	1560	951	2216	1558	2108

BABY LIMAS

State	2005	2004	2003	2002	2001
CA	368	267	325	501	235
Total	368	267	325	501	235

LARGE LIMA

State	2005	2004	2003	2002	2001
CA	310	307	369	334	326
Total	310	307	369	334	326

PINK

State	2005	2004	2003	2002	2001
CA	3	4	9	0	0
ID	280	258	244	220	109
MN	128	71	128	142	59
ND	163	78	130	124	59
OR	8	0	0	0	0
WA	80	110	101	110	99
Total	662	521	612	596	326

CRANBERRY

State	2005	2004	2003	2002	2001
CA	13	23	25	23	30
ID	9	27	23	46	40
MI	140	130	142	290	70
MN	0	0	0	0	7
Total	162	180	190	359	147

GARBANZO

State	2005	2004	2003	2002	2001
CA	219	115	85	288	342
ID	329	179	97	212	412
MT	70	33	22	73	171
ND	114	42	74	91	231
NE	8	14	14	0	48
OR	55	45	24	27	63
SD	70	51	17	25	141
WA	233	114	84	145	204
Total	1098	593	417	861	1612

BLACK

State	2005	2004	2003	2002	2001
CA	7	10	7	0	0
ID	50	57	25	76	13
MI	1130	1290	680	2030	335
MN	124	57	78	139	16
NE	55	46	20	38	22
ND	254	250	277	689	288
NY	128	93	142	91	59
OR	12	0	0	0	0
WA	37	67	34	57	50
Total	1797	1870	1263	3120	783

BLACKEYE

State	2005	2004	2003	2002	2001
CA	191	256	395	313	290
TX	209	128	390	230	263
Total	400	384	785	543	553

PEA BEAN (NAVY)

State	2005	2004	2003	2002	2001
ID	136	98	71	119	63
MI	1310	970	592	1620	170
MN	914	330	612	1128	713
NE	76	41	23	68	0
ND	1343	650	1164	2340	1327
OR	14	10	8	0	0
SD	119	33	24	96	25
WA	18	0	0	0	0
WY	21	10	20	18	13
Total	3951	2142	2514	5389	2311

Dry Edible Beans, Production by Commerical Class (1000 cwt)

ALL RED KIDNEY*

State	2005	2004	2003	2002	2001
CA	61	63	84	117	130
CO	170	90	86	162	135
ID	81	75	31	51	44
MI	350	292	359	390	115
MN	842	473	620	846	550
NE	257	174	292	315	209
ND	10	15	20	27	68
NY	181	193	323	259	122
OR	24	0	0	0	0
WA	46	0	0	26	20
WI	0	113	124	150	110
Total	2,022	1,488	1,939	2,343	1,503

LIGHT RED KIDNEY

State	2005	2004	2003	2002	2001
CA	40	43	68	76	90
CO	170	90	86	162	135
ID	45	42	17	25	10
MI	240	212	239	260	85
MN	183	117	140	152	115
NE	257	174	292	315	209
NY	134	128	253	191	112
OR	11	0	0	0	0
WA	24	0	0	26	20
Total	1,104	806	1,095	1,207	776

DARK RED KIDNEY

State	2005	2004	2003	2002	2001
CA	21	20	16	41	40
ID	36	33	14	26	34
MI	110	80	120	130	30
MN	659	356	480	694	435
ND	10	15	20	27	68
NY	47	65	70	68	10
OR	13	0	0	0	0
WA	22	0	0	0	0
WI	0	113	124	150	110
Total	918	682	844	1,136	727

PINTO

State	2005	2004	2003	2002	2001
CA	0	0	6	0	0
CO	1,665	895	1,031	1,282	1,530
ID	658	593	649	833	521
KS	263	153	231	256	234
MI	280	111	150	183	23
MN	327	160	329	322	156
MT	239	252	209	290	200
NE	1,950	1,196	1,019	1,709	1,050
NM	139	156	186	153	300
ND	6,584	3,561	5,864	7,184	4,050
OR	20	36	30	30	46
SD	57	55	38	73	45
TX	0	0	8	29	15
UT	23	14	16	5	17
WA	249	153	161	295	94
WY	656	479	526	544	440
Total	13,110	7,814	10,447	13,188	8,721

OTHER

State	2005	2004	2003	2002	2001
CA	109	107	75	186	143
CO	145	54	51	75	120
ID	51	51	38	21	31
KS	0	0	0	24	25
MI	130	75	138	122	20
MN	66	46	63	49	61
MT	0	0	2	4	5
NE	62	78	40	49	70
NY	10	11	31	24	13
ND	26	21	84	56	49
OR	14	25	27	77	52
SD	47	25	54	67	59
TX	24	12	115	56	70
WA	22	68	33	16	14
WY	48	31	21	34	15
Total	754	604	772	860	747

TOTAL

State	2005	2004	2003	2002	2001
CA	1,281	1,152	1,380	1,762	1,496
CO	1,980	1,039	1,168	1,519	1,785
ID	1,862	1,638	1,497	1,907	1,424
KS	263	153	231	280	259
MI	3,910	3,145	2,475	4,903	780
MN	2,430	1,150	1,870	2,666	1,575
MT	309	285	233	367	376
NE	3,808	2,376	3,151	3,465	3,185
NM	139	156	186	153	300
NY	282	247	446	333	194
ND	8,664	4,750	7,800	10,626	6,200
OR	156	116	99	146	172
SD	293	164	133	261	270
TX	233	140	513	315	348
UT	23	14	16	5	17
WA	792	609	525	830	578
WI	0	113	124	150	110
WY	759	541	645	624	514
Total	27,184	17,788	22,492	30,312	19,583

USDA Dry Bean, Pea, and Lentil Production Data 2001-2005

LENTIL

STATE	Area Planted (1,000 Acres)					Area Harvested (1,000 Acres)					Yield (Pounds)					Production (1,000 Cwt.)				
	2005	2004	2003	2002	2001	2005	2004	2003	2002	2001	2005	2004	2003	2002	2001	2004	2004	2003	2002	2001
Idaho	65	72	68	68	54	63	70	66	66	53	900	1,100	950	1,200	1,500	567	770	627	792	795
Montana	150	78	30	25	22	139	72	26	21	21	1,300	1,400	1,050	710	1,200	1,807	1,008	273	149	252
North Dakota	150	100	55	53	45	146	94	54	47	44	1,350	1,370	1,170	1,100	1,370	1,971	1,288	632	517	603
Washington	85	95	93	75	80	84	93	91	75	64	900	1,200	1,000	1,700	2,000	756	1,116	910	1,275	1,280
United States	450	345	246	221	201	432	329	237	209	182	1,181	1,271	1,030	1,308	1,610	5,101	4,182	2,442	2,733	2,930

DRY EDIBLE PEA

STATE	Area Planted (1,000 Acres)					Area Harvested (1,000 Acres)					Yield (Pounds)					Production (1,000 Cwt.)				
	2005	2004	2003	2002	2001	2005	2004	2003	2002	2001	2005	2004	2003	2002	2001	2005	2004	2003	2002	2001
Idaho	48	57	55	41	24	46	55	54	40	23	1,300	1,700	1,200	1,600	2,000	598	935	648	640	460
Montana	135	68	33	32	25	118	63	31	27	18	1,700	2,010	1,452	759	1,423	2006	1266	450	205	249
North Dakota	540	310	160	155	90	515	296	155	138	86	1,900	2,340	1,770	1,450	2,020	9785	6926	2744	2001	1737
Oregon	5	7	7	5	5	5	7	7	5	5	2,000	3,000	2,000	1,404	1,604	98	204	130	66	77
Washington	80	88	83	70	62	78	87	82	70	62	1,700	2,400	1,500	1,900	2,000	1326	2088	1230	1330	1240
United States	808	530	338	303	206	762	508	329	280	193	1,813	2,249	1,584	1,517	1,947	13813	11419	5202	4242	3763

AUSTRIAN WINTER PEA

STATE	Area Planted (1,000 Acres)					Area Harvested (1,000 Acres)					Yield (Pounds)					Production (1,000 Cwt.)				
	2005	2004	2003	2002	2001	2005	2004	2003	2002	2001	2005	2004	2003	2002	2001	2005	2004	2003	2002	2001
Idaho	10.0	15.5	10.0	11.0	4.5	8.0	12.0	8.0	7.5	4.0	1,100	1,400	1,400	1,800	1,700	88	168	112	135	68
Montana	21.0	14.0	9.5	9.5	9.9	16.0	11.0	7.0	3.5	2.5	1,100	900	800	571	800	176	99	56	20	20
Oregon	7.5	3.0	1.6	1.0	1.5	3.5	1.5	0.6	0.6	0.6	1,714	1,600	1,000	1,500	1,500	60	24	6	9	9
United States	38.5	32.5	21.1	21.5	15.9	27.5	24.5	15.6	11.6	7.1	1,178	1,188	1,115	1,414	1,366	324.0	291.0	174.0	164.0	97.0

WRINKLED SEED PEA

STATE	Production (1,000 cwt)					
	2005	2004	2003	2002	2001	2000
Idaho	140	174	163	157	202	331
Washington	615	725	510	442	438	349
United States	755	899	673	599	640	680

Dry Pea and Lentil Production Data 1996-2005*

REGULAR GREEN

Year	Acreage	Avg lbs.	Production lbs.
2005	391,664	1,676	656,522,845
2004	276,456	2,467	682,052,193
2003	232,007	1,590	368,843,629
2002	179,014	1,608	287,940,114
2001	145,159	1,699	246,629,930
2000	139,195	1,948	271,141,272
1999	206,645	1,945	401,892,562
1998	197,365	2,142	422,687,215
1997	156,861	2,303	361,229,941
1996	141,097	1,141	161,033,931
10 Yr Avg	206,546	1,852	385,997,363

YELLOW PEAS

Year	Acreage	Avg lbs.	Production lbs.
2005	403,762	1,945	785,322,022
2004	226,383	1,706	386,248,087
2003	72,580	1,790	129,912,434
2002	114,325	1,452	166,010,666
2001	64,033	2,143	137,196,533
2000	50,417	2,182	109,987,107
1999	60,313	1,849	111,511,553
1998	98,258	2,016	198,075,267
1997	37,481	2,038	76,383,732
1996	25,957	1,034	26,833,781
10 Yr Avg	115,351	1,816	212,748,118

SMALL SIEVE GREEN

Year	Acreage	Avg lbs.	Production lbs.
2005	3,652	1,859	6,788,589
2004	4,754	2,365	11,241,771
2003	3,566	1,480	5,278,705
2002	3,409	2,178	7,423,431
2001	4,680	1,704	7,976,863
2000	742	3,389	2,514,500
1999	2,109	2,324	4,901,311
1998	6,354	1,827	11,611,921
1997	10,865	1,725	18,741,852
1996	10,302	1,077	11,092,055
10 Yr Avg	5,043	1,993	8,757,100

LARGE CHICKPEAS

Year	Acreage	Avg lbs.	Production lbs.
2005	75,738	966	73,134,649
2004	32,518	1,241	40,365,641
2003	28,546	953	27,209,441
2002	67,664	866	58,583,988
2001	82,142	1,359	111,612,349
2000	82,819	1,146	94,877,844
1999	35,200	917	32,282,960
1998	22,056	1,106	24,390,500
1997	12,168	1,635	19,900,000
1996	17,760	666	11,832,620
10 Yr Avg	45,661	1,086	49,418,999

AUSTRIAN WINTER PEAS

Year	Acreage	Avg lbs.	Production lbs.
2005	7,170	1,145	8,210,131
2004	17,486	1,565	27,357,702
2003	18,650	1,280	23,879,468
2002	14,964	1,164	17,413,840
2001	7,178	1,865	13,386,160
5 Yr Avg	13,090	1,404	18,049,460

MEDIUM LENTILS

Year	Acreage	Avg lbs.	Production lbs.
2005	303,043	1,267	384,090,129
2004	259,598	1,191	309,240,698
2003	76,671	861	65,996,436
2002	54,280	991	53,795,357
2001	69,857	1,295	90,477,725
2000	60,083	1,554	93,396,014
1999	58,000	1,226	71,129,746
1998	58,096	1,239	72,002,949
1997	88,026	1,323	116,446,926
1996	88,232	894	78,905,656
10 Yr Avg	111,589	1,184	133,548,164

SMALL LENTILS

Year	Acreage	Avg lbs.	Production lbs.
2005	68,808	866	59,614,078
2004	72,702	1,037	75,364,122
2003	158,983	1,115	177,343,425
2002	146,263	1,155	168,924,643
2001	152,630	1,159	176,943,127
5 Yr Avg	119,877	1,066	131,637,879

SMALL CHICKPEAS

Year	Acreage	Avg lbs.	Production lbs.
2005	10,760	1,427	15,357,975
2004	3,429	542	1,858,738
2 Yr Avg	7,095	985	8,608,357

LARGE LENTILS

Year	Acreage	Avg lbs.	Production lbs.
2005	44,329	1,084	48,040,039
2004	5,319	2,225	11,832,954
2 Yr Avg	24,824	1,655	29,936,497

*Figures include US dry pea and lentil figures as reported by member processors, the Farm Service Agency, and the National Agriculture Statistics Service
Source: USA Dry Pea and Lentil Council

BEANS, DRY: U.S. EXPORTS BY COUNTRY OF DESTINATION October 2004-September 2005

(Data in Metric Tons)

COUNTRY	NAVY OR PEA	GREAT NORTHERN	LARGE LIMA	BABY LIMA	WHITE N.E.C.	LT. RED KIDNEY	DK. RED KIDNEY	PINTO	BLACK	BEANS N.E.C.	SEED BEANS	SMALL REDS	TOTAL
NORTH AMERICA													
Antigua & Barbuda													
Bahamas, The		15		74				11			20		119
Barbados					22						10		33
Bermuda						4			2				6
Canada	6437		276			989	1419			6432	10192	151	25896
Costa Rica									921	18	109	227	1274
Dominican Republic		714			1043	60		7672	339	1087	274		11188
El Salvador								60			9		69
French W.Indies				231		751				438	9		1429
Guatemala							106	1156	1252		217	730	3461
Haiti	134				96			9076	1215		67		10587
Honduras								978			4	1485	2727
Jamaica & Dep.	39		220	92		237	711	68	27	26	164	157	1741
Leeward-Windward	20					46					84		149
Mexico	2377							19540	23142	11538	4636	114	61347
Netherlands-Antillies						5	35			7		420	467
Nicaragua								528			61	194	783
Panama	2		14			33		135			15		198
SOUTH AMERICA													
Argentina								38		80	88	18	224
Brazil										33	7		39
Chile											180		180
Colombia										545	37		582
Ecuador	78										6		84
French Guiana						27							27
Peru										25	105		130
Surinam										3			3
Trinidad-Tobago						113				73			186
Uruguay											1		1
Venezuela		399	60	20	242	231	117				196		1265
EUROPE													
Belgium & Lux.		1831				39	735	67		41	43		2757
Cyprus											3		3
Denmark		3					108			947	134		1191
Finland										22			22
France		3793	48	103		56	564	136			2229	72	7001
Germany	20		211				981		4		625		1840
Greece		1860					167				243		2269
Hungary											1		1
Ireland	196						20						216
Italy	799	623	80	118			20	20		297	99		2056
Moldova, Rep. Of								1787					1787
Netherlands	83	601				7	283	480	8	287	764		2512
Norway					4		228		20	349	73	10	684
Portugal				99					40		16		155
Spain	312	878			22		225		30	2181	1433		5080
Sweden		42					21	41	39	221	120		483
United Kingdom	27329	18	2107	69			467	47	93	187	570	10	30896

BEANS, DRY: U.S. EXPORTS BY COUNTRY OF DESTINATION October 2004-September 2005

(Data in Metric Tons)

COUNTRY	NAVY OR PEA	GREAT NORTHERN	LARGE LIMA	BABY LIMA	WHITE N.E.C.	LT. RED KIDNEY	DK. RED KIDNEY	PINTO	BLACK	BEANS N.E.C.	SEED BEANS	SMALL REDS	TOTAL
ASIA													
Afghanistan						99							99
China(Mainland)	120									96	36	65	318
Hong Kong			3			11	18		36	90	113		272
India										73	496		569
Indonesia	18												18
Israel										37	97		134
Japan		1580	2666	4803	40		134	26	36	85	666	607	10644
Jordan											264		264
Korea, DPR	6650										659		7310
Korea	2561	78					41			541	25		3245
Kuwait			19										19
Lebanon										130	7		137
Malaysia	20	1315			64				277	148			1823
Pakistan											92		92
Philippines		943								93		11	1047
Saudi Arabia									3	20	155		178
Singapore							15		5	5			25
Sri Lanka											16		16
Syria											113		113
Taiwan									19	268	20	585	891
Tajikistan, Rep.								393					393
Thailand	10							10			4		24
Turkey		627									105		732
United Arab Emirates									59	90	24		172
OCEANIA													
Australia	1309	771	160	128		92	99	311	45	129	217	784	4044
French Pacific Is.					17					2	10	104	132
New Zealand		30		19			43		2	363	59		516
Other Pacific Is.											1		1
AFRICA													
Algeria										988	235		1223
Angola		280						3515					3795
Congo								498					498
Congo DR (Zaire)								1587					1587
Djibouti											20		20
Egypt		207									73		280
Cote D'Ivoire	397												397
Kenya								1315			103	269	1687
Lesotho								895					895
Malawi								2249			927	70	3245
Mauritius											15		15
Morocco											151		151
Rwanda								1105					1105
Senegal									52				52
So. Africa, Rep of				18							131		149
Uganda								2815					2815
Western Africa								85					85
Zambia								2483					2483
Zimbabwe								496					496
Others	179						41					698	918
Oct-04 Sep-05	49087	16817	5653	5774	1550	2798	6858	59621	27667	27992	27669	6780	238266

Source: Foreign Agricultural Service, Compiled by USDA Market News

Note: Bean, N.E.C. includes Beans Other Kidney, Broad Beans, Chickpeas, Cranberry, and Mung Beans

PEAS, DRY: U.S. EXPORTS BY COUNTRY OF DESTINATION
October 2004-September 2005 (Data in Metric Tons)

COUNTRY	LENTIL	YELLOW	GREEN	OTHER N.E.C.	AUSTRIAN WINTER	BLACKEYE	SEED	TOTAL
NORTH AMERICA								
Bahamas, The			2					2
Barbados	13		6	40				60
Belize				18				18
Bermuda			3					3
Canada	5242	5199	35444	14254			3917	64057
Costa Rica			445					445
Cuba	2506	18890	2387	10000			17378	51161
Dominican Republic				58				58
El Salvador	3			18				22
French W.Indies	14							14
Guatemala		5	1775	147		161	199	2286
Haiti	4146							4146
Jamaica & Dep.		4		57				61
Leeward-Windward	32			109				141
Mexico	3841	20	1940	1151	10		4385	11347
Netherlands-Antillies				5		4		10
Nicaragua	731							731
Panama	2		51	36			20	109
SOUTH AMERICA								
Argentina				25		10	11	46
Bolivia	789		2031					2820
Chile							150	150
Colombia	862	219	858	7				1947
Ecuador							105	105
French Guiana	27							27
Peru	7110		600	2965			201	10875
Venezuela	318		254					572
EUROPE								
Belgium & Lux.	103			5130	40			5272
Cyprus						271		271
Denmark							153	153
Finland							37	37
France	22					36	210	268
Germany	508		20	20			61	610
Greece	1174					324	2	1500
Hungary	208						200	409
Iceland							102	102
Italy	2740	149	459	216		36	216	3816
Netherlands	372			20		127	372	891
Norway	20		112					132
Poland							14	14
Portugal						420		420
Russian Federation			152	87				239
Spain	26657			39531		10	1	66199
Sweden	298					21	430	749
Switzerland		159						159
United Kingdom	28					666	1259	1952
OCEANIA								
Australia	11			197		122	17	346
French Pacific Is.	508							508
New Zealand	6			17		25	39	86

PEAS, DRY: U.S. EXPORTS BY COUNTRY OF DESTINATION
October 2004-September 2005 (Data in Metric Tons)

COUNTRY	LENTIL	YELLOW	GREEN	OTHER N.E.C.	AUSTRIAN WINTER	BLACKEYE	SEED	TOTAL
ASIA								
Afghanistan	1211	329						1540
Bangladesh		270		339				609
China(Mainland)				23			43	66
Hong Kong	16	21	11	92		67	6	213
India	1581		30178	1215		73	529	33576
Indonesia	1130		276	453				1859
Israel			287					287
Japan	460		529	94	218	5	298	1603
Jordan						17	41	58
Korea			4576	573				5148
Kuwait							14	14
Lebanon	75					2	64	140
Malaysia	105		44	278				426
Nepal	200							200
Pakistan	109		426				292	827
Philippines	306	377	13806	184				14673
Saudi Arabia	129			7				136
Singapore	5					117		122
Sri Lanka	350			91				440
Syria							839	839
Taiwan	104	642	994	780	235		25	2779
Tajikistan, Rep.	519		350					869
Thailand			30	14			1	45
Turkey	393		85				77	555
United Arab Emirates	8116	766	368	998				10248
Yemen			1637					1637
AFRICA								
Algeria							20	20
Angola		929	12774					13703
Burkina Faso	2457	30						2487
Burundi		5818						5818
Central Africa Rep.		100						100
Chad	1474		882					2356
Congo		674						674
Congo, DPR		2668	398					3066
Egypt			22				1	23
Ethiopia	6854	1749		469				9072
Eritrea	5732							5732
Guinea		449	40					489
Cote D'Ivoire		200						200
Kenya		11575	6514				9	18097
Liberia	228	1754						1983
Mali		80						80
Mauritania		957						957
Mozambique		299		994				1293
Rwanda		390						390
Senegal	211							211
Sierra Leone	389	199	230					818
Somalia	3693	200						3892
So. Africa, Rep of		2829	451				94	3373
Sudan	15529	6582	9342	2156				33608
Swaziland		438						438
Tanzania		560						560
Uganda	110	9416	1470					10996
Zambia		737						737
Others	460							1603
Oct-04 Sep-05	110023	76716	132256	82865	502	2513	31839	436715

Source: Foreign Agricultural Service, Compiled by USDA Market News Note: Other n.e.c. consists of Peas other ex seed and Split Peas.

Note: Annual Totals are adjusted monthly to reflect current data and adjustments to previous data

U.S. Exports, Dry Beans (cwt)

BEANS	Oct 04-Sep 05	Oct 03-Sep 04	Oct 02-Sep 03	Oct 01-Sep 02	Oct 00-Sep 01	Oct 99-Sep 00
PEA BEAN	1,081,877	1,149,421	1,458,753	1,400,783	1,884,420	1,559,969
GREAT NORTHER	370,647	270,365	1,050,382	1,079,446	1,129,109	828,660
LIMA	251,851	284,713	388,896	335,585	313,078	417,261
WHITE N.E.C.	34,162	32,773	264,216	19,869	31,583	32,553
KIDNEY	212,818	239,024	721,700	442,041	710,966	602,992
PINTO	1,314,047	2,033,829	1,134,509	1,947,049	1,869,411	1,513,421
BLACK	609,781	628,010	1,083,775	431,061	706,624	607,863
BEANS N.E.C.**	616,944	610,530	697,808	953,018	1,365,290	683,835
SEED	609,825	614,078	527,109	679,903	574,847	304,813
SMALL RED	149,431	220,356	167,901	97,562	141,254	203,099
TOTAL	5,251,383	6,083,100	7,495,048	7,386,318	8,726,584	6,754,467

** Bean, N.E.C. includes Beans Other, Beans other Ex Seed, Beans Misc, Chickpeas, Cranberry, and Mung Beans

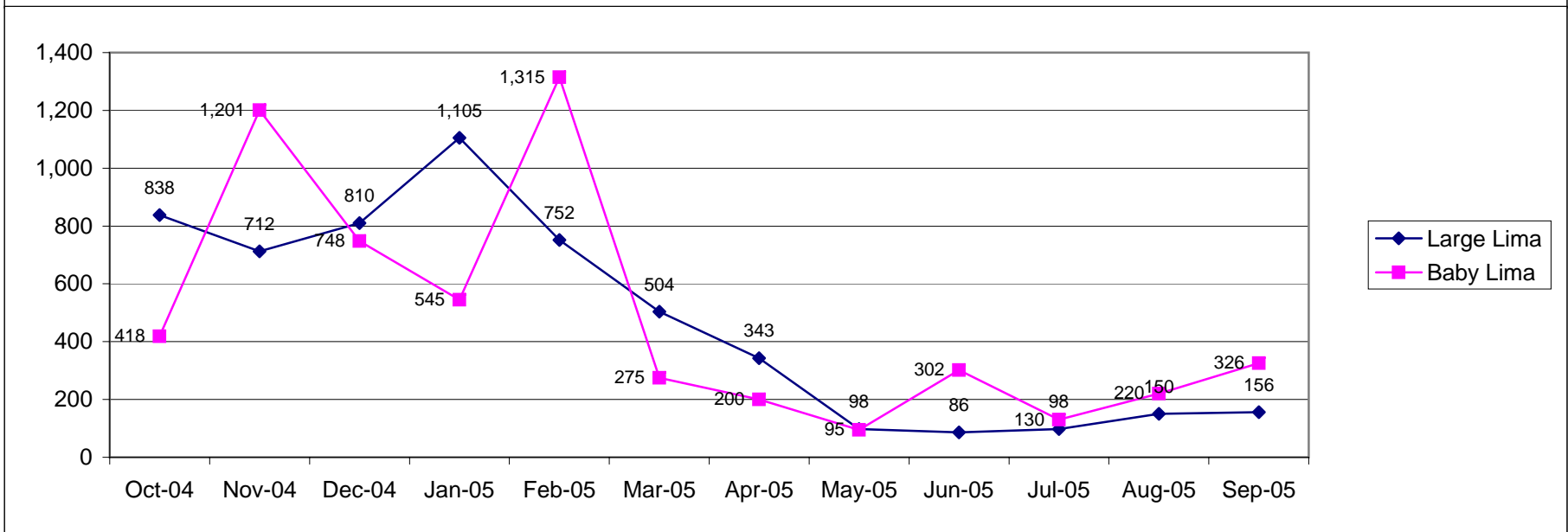
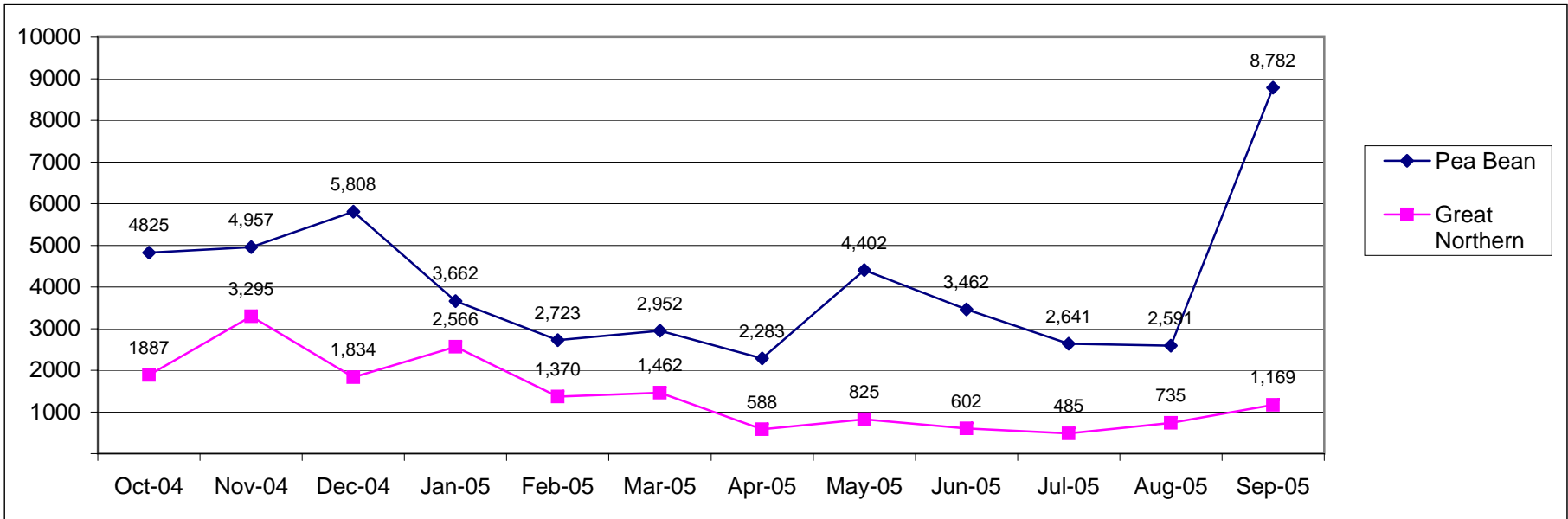
U.S. Exports, Dry Ripe Peas (cwt)

PEAS	Oct 04-Sep 05	Oct 03-Sep 04	Oct 02-Sep 03	Oct 01-Sep 02	Oct 00-Sep 01	Oct 99-Sep 00
AUSTRIAN WINTER	11,064	11,977	17,808	23,105	48,885	17,169
BLACKEYE	55,387	19,810	32,639	90,952	98,012	138,565
GREEN	2,914,922	1,601,358	1,558,988	1,058,129	1,223,969	1,034,381
LENTIL	2,424,907	2,005,953	1,996,072	2,541,141	1,727,143	1,810,762
OTHER N.E.C.	1,826,345	476,157	382,224	506,640	297,342	296,526
SEED	701,732	378,292	330,029	229,388	232,720	475,271
YELLOW	1,690,821	850,951	292,109	293,736	147,580	204,024
TOTAL	9,625,177	5,344,497	4,609,871	4,743,092	3,775,650	3,976,699

BEANS, DRY: U.S. EXPORTS BY MONTH

October 2004-September 2005

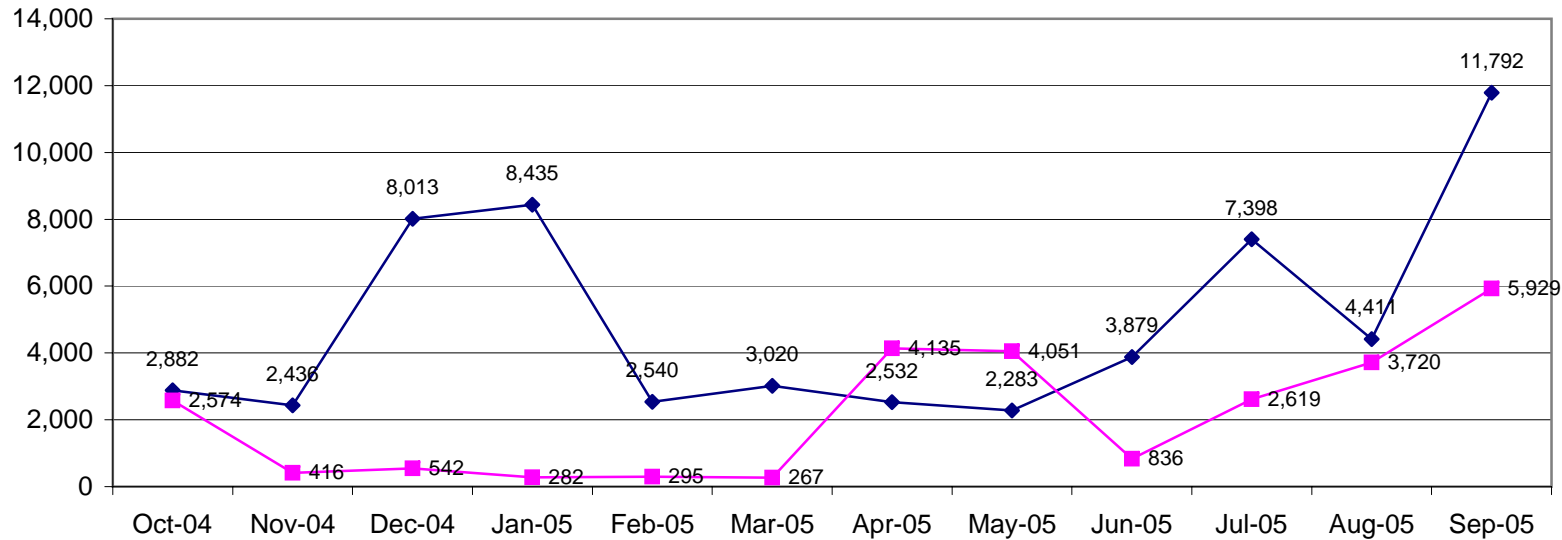
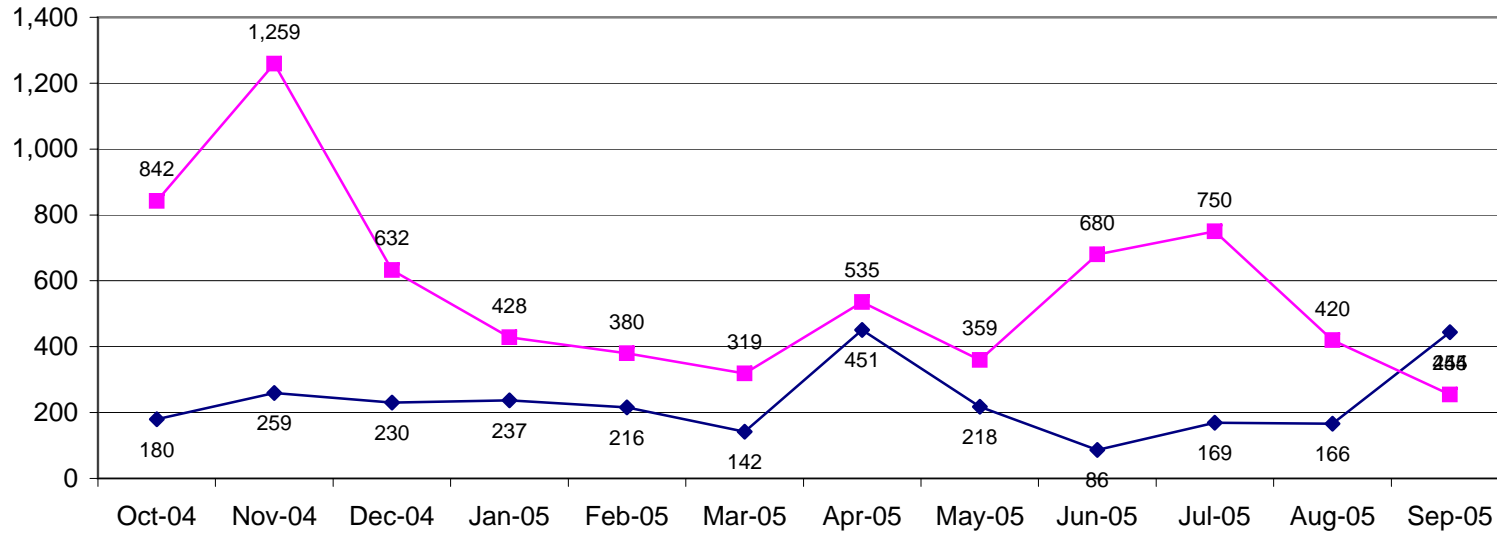
Data in Metric Tons



BEANS, DRY: U.S. EXPORTS BY MONTH

October 2004-September 2005

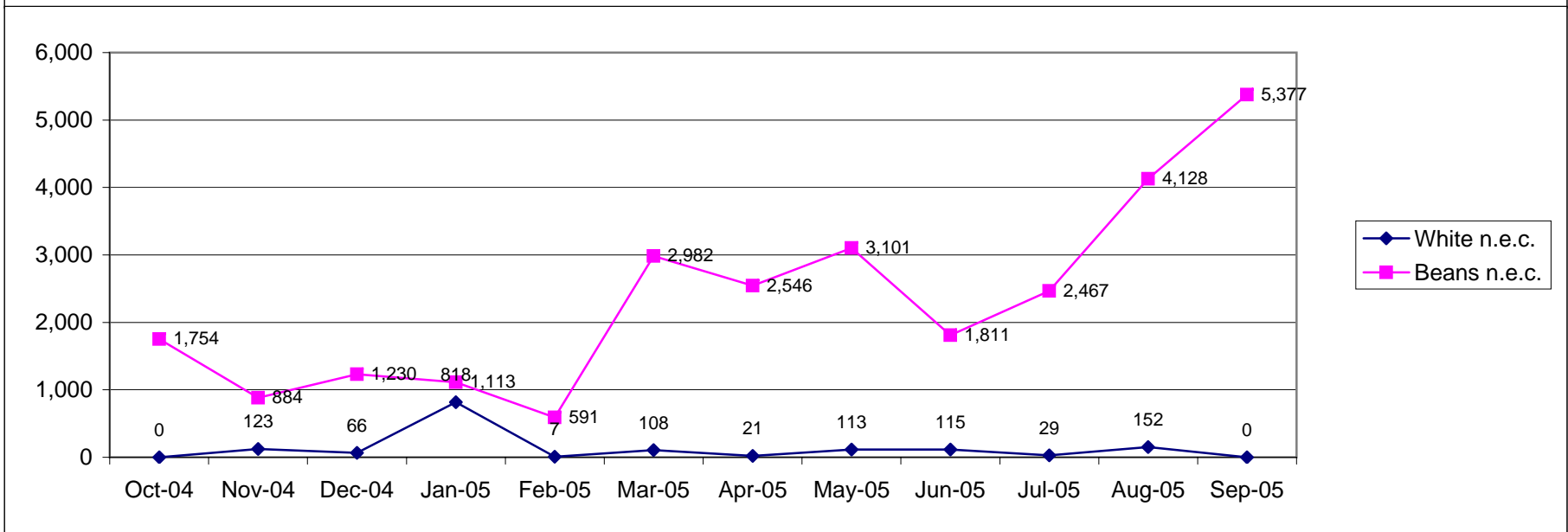
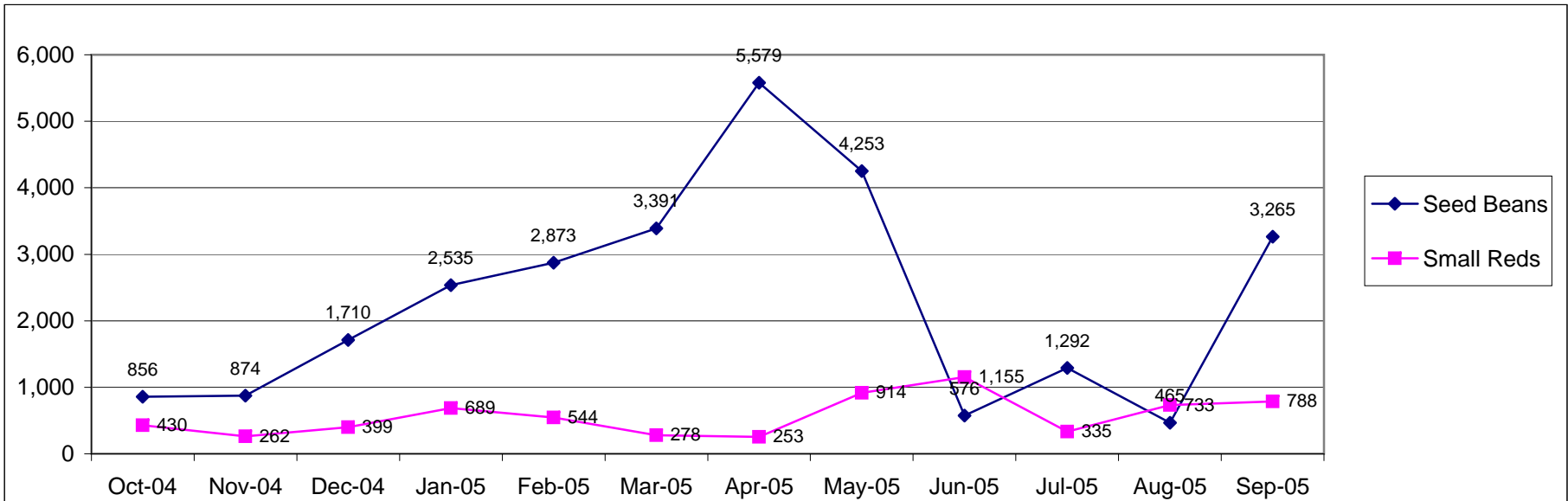
Data in Metric Tons



BEANS, DRY: U.S. EXPORTS BY MONTH

October 2004-September 2005

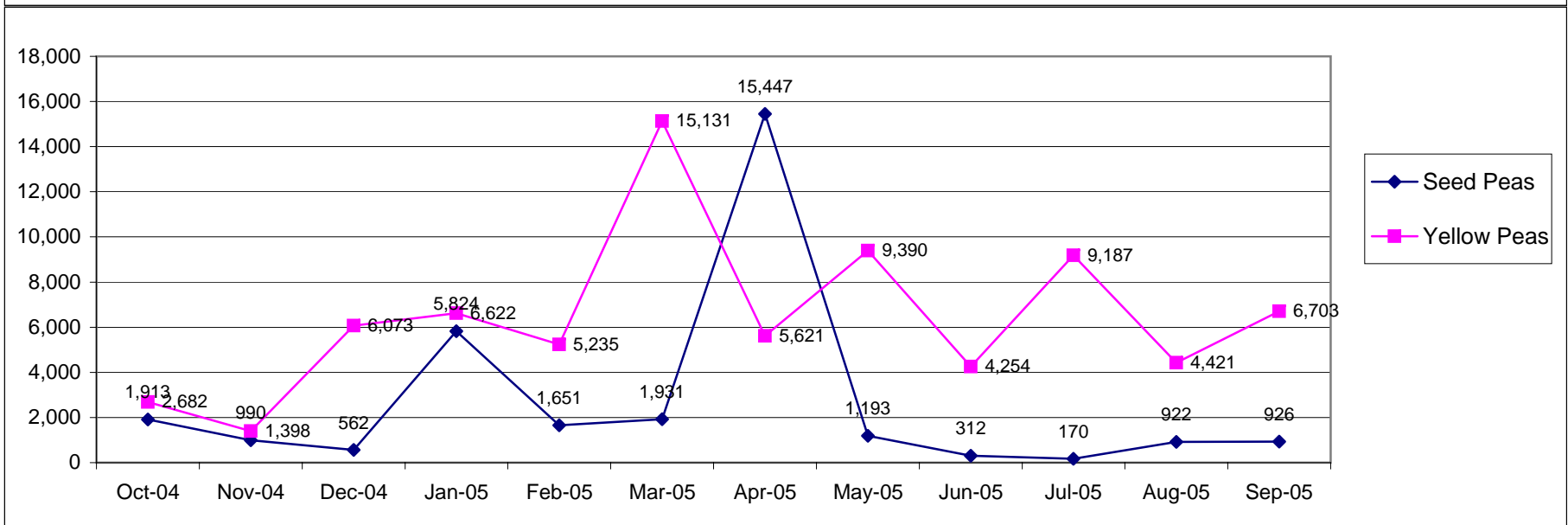
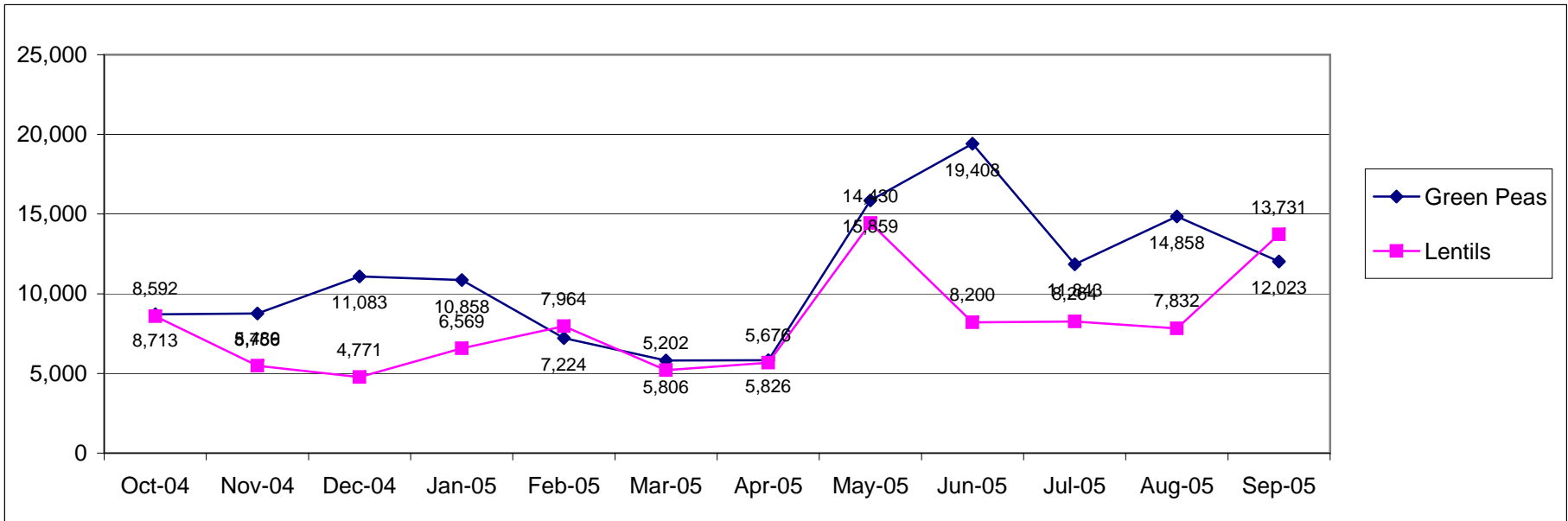
Data in Metric Tons



PEAS, DRY: U.S. EXPORTS BY MONTH

October 2004-September 2005

Data in Metric Tons



CANADIAN EXPORTS BY COUNTRY OF DESTINATION

(Data in 1,000 KGM, Calander Year)

COUNTRY	LENTILS			DRY PEAS			DRY BEANS			CHICKPEAS		
	2005	2004	2003	2005	2004	2003	2005	2004	2003	2005	2004	2003
NORTH AMERICA												
Cuba		1528		22859	27	21127		1034				
Dominican Rep.							15504	266	10696			
Guatemala							1276		1452			
Haiti									1974			
Mexico	25665	2634	22916	7172	388	3307			2117			
Panama	5334	174	1524						1675			
Trinidad & Tobago	2027	218	1679	4720	267	4376	1167			961	474	
United States	7277	776	7823	42467	3036	28512	60016	5575	74517	3684	577	3517
SOUTH AMERICA												
Argentina	7675	522	4598									
Brazil	11407	466	12250	7839	323	10890				712		2486
Chile	14889	1825	9030	5302	191	2952						
Colombia	52961	4429	40020	27361	1583	26282				3177	53	1358
Ecuador	16110	1418	8412	4606		2555						
Guyana				2436	224	2609						
Peru	13872	1403	7147	41101	735	9437						
Uruguay	2181	529	3047									
Venezuela	28226	2047	6728	13744	2233	3702			2001			
EUROPE												
Belgium & Luxembourg	8086	1059	10213	39386	176	17323	3094	753	1288	1230	283	
Bulgaria	2937											
Croatia							2480	105	914			
Cyprus	1116											
Czech Republic	3292	99	2525									
France	7911	1077	6759				2471		3822			
Germany	13107	1307	8006									
Greece	7622	1960	6482				5624	461	3580			
Italy	20732	2074	17576	4794	208	19632	3606	754	5728	1586		849
Netherlands	2056	163	3186		42			317	2003			
Poland			1362									
Portugal	3246	483					3890	80	3700	1212	151	
Russian Federation				790283	298	3841						
Slovenia							703	576				
Spain	36130	936	12831		17845	230155	4865	526	3460	5117	234	2096
Turkey	55980	5198	12993		547		769					
United Kingdom	4708	256	1680	2736	62	2240	863			1766	168	
ASIA												
Bangladesh	5149	2810	9290	73515	34990				70894		200	6350
China (Mainland)				249837	18829	27565						
India	18285	915	10609	770416	35822	271037				3946		43443
Indonesia				8758	1096	7440						
Israel	5554	1082	2347	3114	750	1836		255				
Iraq												3993

cont.

CANADIAN EXPORTS BY COUNTRY OF DESTINATION

(Data in 1,000 KGM, Calander Year)

COUNTRY	cont.	LENTILS			DRY PEAS			DRY BEANS			CHICKPEAS		
		2005	2003	2002	2005	2004	2003	2005	2004	2003	2005	2004	2003
Japan					9868	797	6110	8898	368	11753			
Jordan			1079								2197		
Kuwait													2527
Lebanon		3152	2176	1474									
Malaysia					2329								
Nepal					4327								
Pakistan		17679	12945	11584	41830	2546	10009				23979		6868
Philippines					10042	330	5388						
Saudi Arabia		4966	1290	2394	6106	135	4023						
Sri Lanka		2635	9290	3948		78	1934						1142
Taiwan					10914	1739	8119						
Thailand					1754								
United Arab Emirates		9516	3983	2162	6340	628	10981					232	1571
Yemen					3004	173							
OCEANIA													
Other Pacific Is.					3735					4123			
AFRICA													
Algeria		71504	50899	46564	5879	782	2048	972	24			21	3337
Angola								6927	25	16251			
Burundi					1850								
Egypt		1225	16713	13633									
Eritrea							1836						
Ethiopia					5606								
Kenya					4668								
Malawi					2522								
Morocco		2261	5052	5979	6138	1029							
Mozambique					4117		1333						
So. Africa, Rep of					11873	170	12367						
Sudan					16527								
Tanzania							2720						
Uganda					2733								
Zimbabwe										3218			
OTHERS		10657	8607	8400	30019	2865	23844	8166	1437	10091	9010	670	7846
TOTAL		575515	367142	313339	348727	130942	865851	131290	13151	157023	58577	3062	87385

USDA/CCC Purchases of Dry Edible Beans, Peas, & Lentils Under PL480 Program for Export Distribution (MT)

CLASS	FY05	FY04	FY03	FY02	FY01	FY00
PEA BEAN	730	30,370	190	0	889	19,329
PINTO	17,020	34,400	60,900	21,000	18,440	24,560
GREAT NORTHERN	1,000	160	1,120	8,580	8,989	3,810
SMALL RED	3,170	760	3,870	2,180	2,558	6,060
BLACK	400	2,380	1,970	1,450	1,170	1,740
LIGHT RED KIDNEY	0	0	700	0	680	0
DARK RED KIDNEY	1,710	880	2,520	4,470	4,000	2,160
LENTIL	102,710	36,760	78,350	47,410	31,089	27,300
GREEN PEA	19,730	31,960	12,280	19,050	28,490	28,490
SPLIT GREEN PEAS	6,150	16,980	12,450	3,790	3,360	0
YELLOW PEA	51,420	24,970	800	4,600	8,300	12,060
SPLIT YELLOW PEAS	21,180	9,610	7,030	12,560	1,210	0
TOTAL	225,220	189,230	182,180	125,090	109,175	125,509

USDA Purchases of Canned Dry Beans, Peas and Lentils for Use in Various Domestic Feeding Programs (1,000 pounds)

CLASS	Oct 04-Sep 05	Oct 03-Sep 04	Oct 02-Sep 03	Oct 01-Sep 02	Oct 00-Sep 01	Oct 99-Sep 00
BABY LIMA	0	315	665	420	420	0
BLACKEYE	4,190	3,612	3,358	1,085	16,746	4,665
BLACK	0	175	140	175	140	0
GARBANZO	595	350	1,260	1,400	560	595
GREAT NORTHERN	35	175	350	770	595	175
PEAS	13,408	11,342	10,419	11,117	11,111	8,316
RED KIDNEY	1,202	876	1,225	840	1,155	350
PINK	1,960	735	2,274	2,239	1,225	1,330
PINTO	4,234	3,534	5,144	5,564	6,579	3,079
REFRIED BEAN	6,505	6,168	7,954	7,734	8,313	5,697
SMALL RED	3,044	840	2,589	2,554	2,239	1,470
VEGETARIAN BEAN	9,494	10,603	12,655	11,314	13,465	11,733
TOTAL	44,667	38,725	48,033	45,212	62,548	37,410

USDA Purchases of Dry Edible Beans, Peas and Lentils for Use in Various Domestic Feeding Programs (1,000 pounds)

CLASS	Oct 04-Sep 05	Oct 03-Sep 04	Oct 02-Sep 03	Oct 01-Sep 02	Oct 00-Sep 01	Oct 99-Sep 00
BABY LIMA	1,048	1,371	1,452	847	2,580	1,089
BLACKEYE	1,411	1,855	1,331	1,895	2,903	3,871
GARBANZO	0	0	0	0	0	0
GREAT NORTHERN	4,838	4,596	4,354	3,104	7,337	3,869
GREEN PEA	0	0	0	0	0	0
SPLIT GREEN PEA	0	0	0	0	1,693	0
LENTIL	0	0	0	0	1,210	0
PEA BEAN	0	0	0	0	1,450	80
PINK	0	0	0	0	927	0
PINTO	12,738	13,220	14,389	10,477	23,566	12,495
RED KIDNEY	2,943	5,080	3,709	2,460	4,153	2,097
SMALL RED	0	0	0	0	1,530	0
SMALL WHITE	0	0	0	0	0	0
TOTAL	22,978	26,122	25,235	18,783	47,349	23,501

Source: Fruit and Vegetable Division, USDA

WORLD PULSE PRODUCTION (1,000 Metric Tons)***

COUNTRY	2005	2004	2003	2002	2001	COUNTRY	2005	2004	2003	2002	2001
WORLD	60730	61210	57088	57002	54172	ASIA	28816	28264	26056	27208	23824
AFRICA	9548	9610	9705	9597	9437	Azerbaijan	17	20	17	15	14
Angola	108	76	66	58	89	Bangladesh	334	334	345	344	370
Benin	119	119	100	119	94	China	5491	5304	5892	5915	5122
Burkina Faso	189	329	517	391	439	India	14600	14500	11680	12177	11221
Burundi	256	256	280	280	284	Indonesia	311	311	311	336	289
Cameroon	266	266	266	266	270	Iran	695	695	685	668	558
Chad	121	121	121	121	126	Japan	119	119	83	101	96
Congo	186	185	183	180	186	Korea, DPR	310	310	300	300	300
Egypt	484	483	489	492	516	Lebanon	14	14	14	16	13
Ethiopia	1050	1044	869	1088	1160	Myanmar	2447	2447	2410	2344	2044
Eritrea	35	36	35	35	52	Nepal	267	261	253	250	226
Guinea	60	60	60	60	55	Pakistan	1242	998	1074	763	770
Kenya	463	440	607	671	482	Philippines	55	55	54	54	56
Madagascar	102	102	94	89	94	Syria	280	241	325	290	306
Malawi	256	254	285	266	236	Thailand	300	298	295	274	294
Mali	113	113	108	92	106	Turkey	1558	1579	1558	1641	1455
Morocco	262	262	260	263	188	Vietnam	255	253	254	239	256
Mozambique	205	205	205	205	205	Yemen	64	61	61	61	64
Niger	572	572	571	422	370	EUROPE	7942	8837	7690	8238	8057
Nigeria	2367	2367	2278	2224	2222	Albania	25	25	20	27	24
Rwanda	219	215	257	263	258	Austria	112	112	113	113	104
Senegal	12	12	35	13	32	Belarus	350	426	333	279	281
Sierra Leone	59	59	60	56	55	Bosnia Herzg	25	25	17	21	17
South Africa	95	97	81	82	129	Bulgaria	21	21	24	25	26
Sudan	272	272	272	273	240	Croatia	20	20	17	23	12
Tanzania	484	473	470	451	447	Czech Rep	75	82	62	65	91
Togo	50	50	50	50	47	Denmark	67	96	125	150	113
Tunisia	94	91	93	59	55	France	1754	2083	1945	2035	1877
Uganda	711	711	646	700	673	Germany	528	528	462	478	641
Zimbabwe	55	55	55	53	53	Greece	41	38	39	40	40
NORTH/CENTRAL AMERICA	9399	8651	7029	6653	6792	Hungary	22	39	34	54	70
Canada	4753	4580	3065	2292	3366	Ireland	14	14	14	8	10
Dominican Rep	51	47	53	53	54	Italy	163	126	121	125	127
El Salvador	84	84	83	83	74	Lithuania	57	62	57	63	52
Guatemala	132	132	130	129	129	Macedonia	28	28	29	28	25
Haiti	63	63	68	71	71	Moldova Rep	52	150	30	48	78
Honduras	86	79	70	89	59	Netherlands	17	17	17	16	16
Mexico	1752	1752	1752	1893	1495	Poland	280	270	238	229	211
Nicaragua	206	173	230	197	177	Portugal	19	21	21	22	22
USA	2097	1569	1406	1700	1224	Romania	88	113	61	55	61
SOUTH AMERICA	3977	3807	4234	3992	3332	Russian Fed	1938	1900	1601	1797	1796
Argentina	215	174	258	319	301	Slovakia	54	54	42	48	45
Brazil	3087	2984	3318	3082	2466	Spain	327	589	522	489	310
Chile	113	105	96	81	105	Sweden	67	89	80	85	77
Colombia	132	131	137	121	125	UK	860	922	934	924	957
Ecuador	60	56	57	61	39	Ukraine	753	814	872	810	827
Paraguay	80	79	77	66	65	OCEANIA	2047	2042	2374	1315	2730
Peru	201	185	199	196	168	Australia	2006	2002	2334	1277	2684
						New Zealand	33	32	32	30	39

***Latest information available

Source: FAO United Nations, February 2005 Database

WORLD DRY BEAN PRODUCTION (1,000 Metric Tons)***

COUNTRY	2005	2004	2003	2002	2001	COUNTRY	2005	2004	2003	2002	2001
WORLD	18725	18725	19736	18859	16601	ASIA	8265	8233	7718	8176	7273
AFRICA	18992	18368	18572	19369	16663	Bangladesh	49	49	48	49	53
Angola	58	58	66	58	89	Cambodia	50	45	32	24	17
Benin	105	105	101	100	78	China	1909	1858	2080	2058	1806
Burundi	220	220	245	245	249	India	2900	2900	2230	2670	2200
Cameroon	170	170	170	170	170	Indonesia	310	310	310	335	288
Chad	78	78	78	78	18	Iran	185	185	180	210	144
Congo	114	114	112	111	117	Japan	118	118	82	100	95
Egypt	53	53	55	53	40	Kazakhstan	4	3	4	4	9
Ethiopia	116	116	116	116	211	Korea DPR	310	310	300	300	300
Kenya	255	255	255	300	280	Korea Rep	9	9	8	10	13
Madagascar	70	70	70	70	75	Myanmar	1550	1550	1538	1527	1467
Malawi	79	79	110	94	60	Nepal	30	30	30	29	27
Morocco	12	12	12	12	12	Pakistan	148	148	165	168	143
Rwanda	198	198	239	247	242	Philippines	27	27	26	26	28
Somalia	0	0	16	16	16	Sri Lanka	11	11	11	10	10
South Africa	87	87	68	67	112	Thailand	220	218	215	216	238
Sudan	30	30	30	25	25	Turkey	225	250	250	250	225
Tanzania	270	270	270	270	270	Viet Nam	158	157	158	144	161
Togo	45	45	45	45	41	EUROPE	662	775	592	590	585
Uganda	535	535	535	535	511	Albania	22	22	18	25	22
Zimbabwe	50	50	50	50	50	Belarus	250	316	239	188	178
NORTH / CENTRAL AMERICA	3560	3063	3460	3969	2835	Bosnia Herzg	14	14	8	11	10
Belize	4	4	6	4	6	Bulgaria	9	9	11	8	11
Canada	287	214	344	407	289	Croatia	16	16	13	19	8
Costa Rica	15	13	15	13	16	France	8	9	9	9	9
Cuba	135	133	127	107	99	Greece	23	21	22	22	22
Dominican Rep	27	23	29	29	30	Ireland	10	10	9	6	8
El Salvador	84	84	83	83	75	Italy	19	14	13	19	20
Guatemala	97	97	95	95	95	Lithuania	1	1	1	1	0
Haiti	33	33	34	33	33	Macedonia	15	15	15	14	12
Honduras	86	79	70	88	59	Moldova	35	80	19	22	37
Mexico	1400	1400	1400	1549	1063	Netherlands	5	5	5	5	5
Nicaragua	206	173	230	197	177	Poland	31	38	34	46	41
USA	1184	807	1021	1360	888	Portugal	3	5	5	6	6
SOUTH AMERICA	3683	3523	3959	3738	3083	Romania	50	54	37	34	36
Argentina	171	130	216	278	263	Russian Fed	12	11	10	6	6
Bolivia	22	22	32	20	14	Slovenia	1	1	0	1	1
Brazil	3076	2965	3302	3064	2454	Spain	18	19	15	13	15
Chile	45	49	48	45	60	Ukraine	42	44	53	67	93
Colombia	131	130	136	120	124	OCEANIA	50	60	47	39	50
Ecuador	40	36	40	48	30	Australia	50	60	47	39	50
Paraguay	67	65	65	54	53						
Peru	90	83	88	88	61						
Venezuela	38	39	28	17	22						

***Latest information available

Source: FAO United Nations, February 2005 Database

WORLD GARBANZO (CHICK-PEA) PRODUCTION (1,000 Metric Tons)***

COUNTRY	2005	2004	2003	2002	2001	COUNTRY	2005	2004	2003	2002	2001
WORLD	9173	8626	7113	8284	6894	ASIA	8262	7776	6230	7274	5415
AFRICA	328	324	305	372	345	Bangladesh	10	10	11	11	14
Algeria	15	15	19	15	12	China	12	10	8	7	5
Egypt	11	11	12	14	13	India	6000	5770	4130	5473	3855
Eritrea	4	3	1	1	8	Iran	310	310	310	300	269
Ethiopia	135	136	114	187	176	Israel	15	14	15	17	13
Kenya	30	29	47	59	49	Jordan	2	1	2	3	1
Malawi	35	35	35	35	35	Kazakhstan	4	3	4	1	2
Morocco	42	42	43	51	32	Lebanon	2	2	2	3	2
Sudan	30	30	30	30	23	Myanmar	230	230	228	212	119
Tanzania	27	30	32	32	32	Nepal	10	8	8	11	12
Tunisia	20	15	15	6	7	Pakistan	868	611	675	362	397
Uganda	1	1	1	1	1	Syria	55	45	87	89	60
						Turkey	610	620	600	650	535
						Yemen	36	36	36	36	37
NORTH/CENTRAL AMERICA	338	291	308	392	781		49	89	86	102	83
Canada	98	51	68	157	455	EUROPE					
Mexico	240	240	240	235	326	Bosnia Herzg	4	4	3	4	2
						Bulgaria	4	4	5	5	4
SOUTH AMERICA	7	7	7	8	12	Greece	2	2	2	2	2
Argentina	1	1	1	1	1	Italy	6	7	6	6	7
Chile	3	3	3	3	4	Portugal	1	1	1	1	1
Peru	3	2	2	3	6	Russian Federation	12	12	16	12	8
						Spain	18	57	51	70	53
							189	140	178	136	258
						OCEANIA					
						Australia	189	140	178	136	258

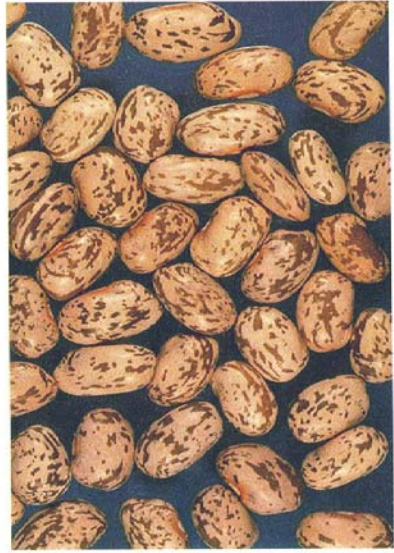
***Latest information available

Source: FAO United Nations, February 2005 Database

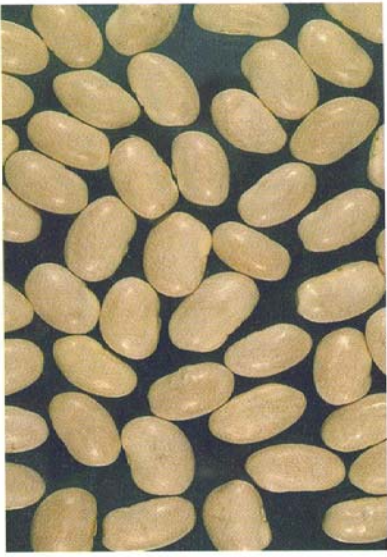
WORLD PEA PRODUCTION (1,000 Metric Tons)***

COUNTRY	2005	2004	2003	2002	2001	COUNTRY	2005	2004	2003	2002	2001
WORLD	11565	12250	10102	9860	10467						
AFRICA	347	344	311	365	303	Myanmar	36	36	35	33	30
Algeria	6	6	6	4	4	Pakistan	49	58	54	57	61
Burundi	34	34	34	33	33	Turkey	3	4	4	4	3
Congo	6	6	6	5	5	Turkmenistan	12	10	15	10	8
Ethiopia	172	170	140	200	147	Yemen	2	2	2	2	2
Lesotho	3	3	3	3	4	EUROPE	4688	5285	4572	5150	5319
Libyan	5	5	5	5	5	Austria	104	104	104	104	96
Madagascar	7	7	7	7	7	Belarus	100	110	94	91	103
Morocco	26	26	23	22	13	Belgium	4	6	9	5	0
Rwanda	19	17	18	16	16	Bosnia	4	4	3	4	2
South Africa	1	1	1	1	1	Bulgaria	5	5	4	9	9
Tanzania	30	30	30	28	28	Czech Rep	65	72	54	56	83
Tunisia	5	5	5	5	4	Denmark	54	83	106	139	11
Uganda	15	15	14	16	15	Estonia	4	3	5	5	5
NORTH / CENTRAL AMERICA	3847	3907	2401	1594	2254	Finland	9	6	10	11	12
Canada	3170	3338	2124	1366	2045	France	1332	1671	1617	1663	1660
Jamaica	3	3	3	2	1	Germany	464	464	401	413	560
Mexico	4	4	4	4	4	Hungary	19	35	30	49	64
USA	667	559	266	220	200	Ireland	4	5	5	2	2
SOUTH AMERICA	84	89	86	85	78	Italy	33	32	30	25	18
Argentina	26	26	24	22	20	Latvia	3	3	4	3	3
Bolivia	5	5	5	5	5	Lithuania	23	23	22	37	30
Brazil	0	8	7	8	4	Macedonia	1	1	2	2	2
Chile	1	1	1	1	3	Moldova Rep	15	67	10	25	38
Ecuador	3	3	2	3	2	Netherlands	10	10	10	7	7
Guyana	1	1	1	1	1	Poland	36	33	27	40	40
Paraguay	4	5	2	3	3	Romania	37	58	24	20	22
Peru	42	38	41	40	38	Russian Fed	1290	1243	1052	1268	1272
Uruguay	3	3	3	3	3	Slovakia	31	31	19	25	23
ASIA	2167	2128	2294	2459	1963	Spain	120	195	148	100	52
Bangladesh	17	17	15	16	17	Sweden	66	88	79	84	76
China	1200	1160	1230	1500	1120	Switzerland	18	17	18	16	11
India	800	800	730	800	700	UK	200	242	288	292	361
Kazakhstan	36	32	29	27	14	Ukraine	600	636	371	613	619
Lebanon	2	2	2	2	3	OCEANIA	433	497	438	207	550
						Australia	401	466	407	178	512
						New Zealand	32	31	31	29	38

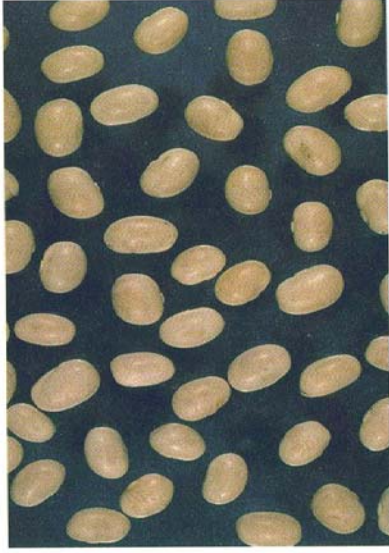
***Latest information available
Source: FAO United Nations, February 2005 Database



Pinto



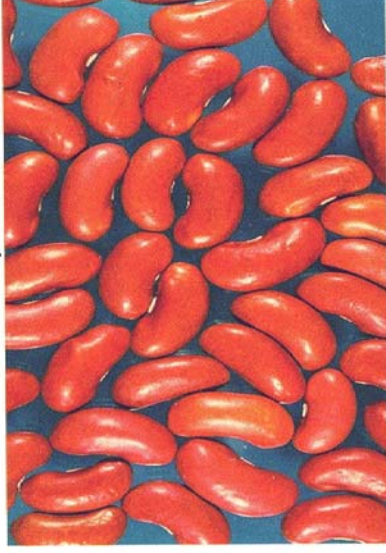
Great Northern



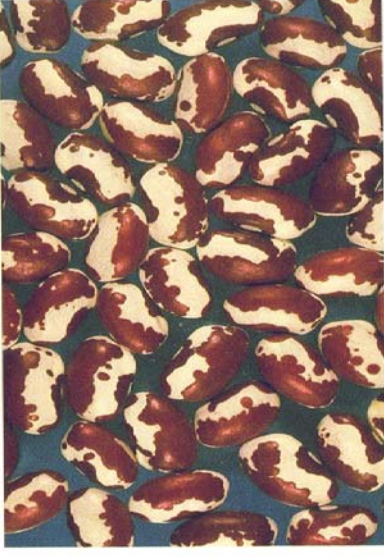
Navy



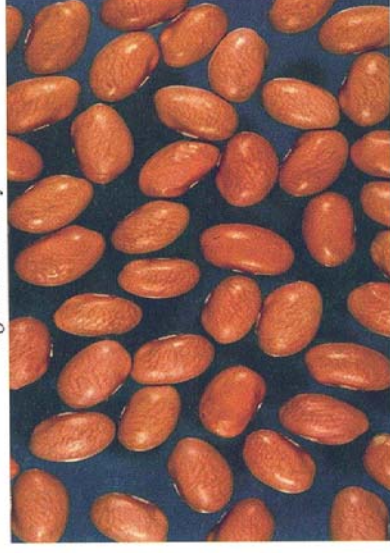
Black



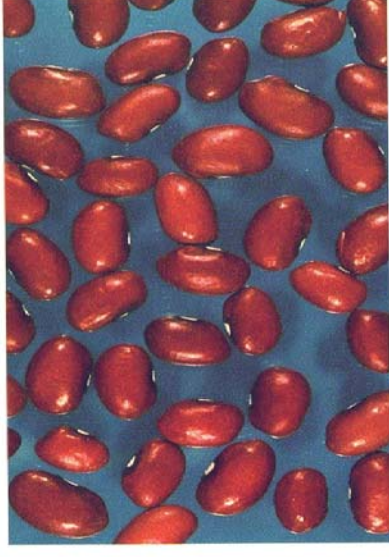
Light Red Kidney



Anasazi



Pink



Small Red