



Bean Market News 2011 Summary



USDA Agricultural Marketing Service



USDA - AMS, LIVESTOCK AND GRAIN MARKET NEWS

800 8th Avenue, Suite 209

Greeley, Colorado 80631

Telephone: (970) 353-9750 FAX: (970) 353-9790

Internet Access: WWW.AMS.USDA.GOV/LSMARKETNEWS

Reporter: Devin Murnin

Market Reporting Assistant/Editor: Randall Bisel



TABLE OF CONTENTS

	Page
Table of Contents	i - iii
Terms of Use/Copyright Information	iii-iii
Dealer Price Trends - Graphs	1 - 4
Pinto - Northern Colorado	1
Pinto - North Dakota/Minnesota	2
Pea Bean - Michigan	3
Great Northern - Western Nebraska/Eastern Wyoming	4
Monthly Average Prices	5 - 18
Dealer - Pinto, Great Northern	5
Grower - Pinto, Great Northern	6
Dealer - Black, Pink, Garbanzo	7
Grower - Black, Pink, Garbanzo	8
Dealer - Pea Bean, Light Red Kidney	9
Grower - Pea Bean, Light Red Kidney	10
Dealer - Dark Red Kidney, Small Red	11
Grower - Dark Red Kidney, Small Red	12
Dealer - Brewer Lentil, Pardina Lentil, Green Pea Split and Whole	13
Grower - Brewer Lentil, Pardina Lentil, Whole Green Pea	14
Dealer - Austrian Winter Peas, Richlea Lentil, Yellow Pea Split and Whole	15
Grower - Austrian Winter Pea, Richlea Lentil, Whole Yellow Pea	16
Dealer - Baby Lima, Large Lima, Blackeye, Garbanzo (California)	17
Grower - Baby Lima, Large Lima, Blackeye, Garbanzo (California)	18
Dry Beans, U.S. Production by Commercial Class, USDA/KCCC Purchases of Dry Edible Beans, Peas, and Lentils	19
Dry Edible Beans, Production by Commercial Class by State	20 - 21
Dry Bean, Pea, and Lentil Production 2006-2010, USDA, NASS	22

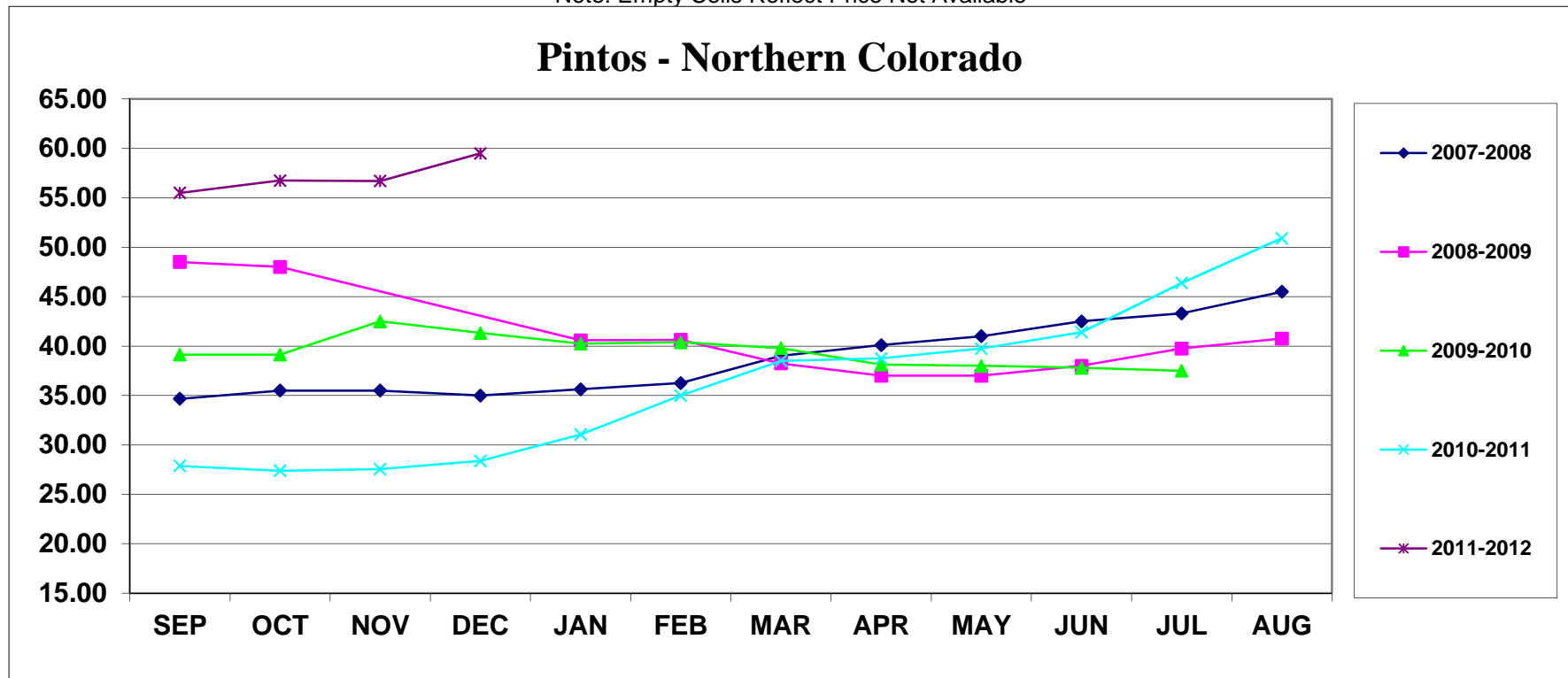
Dry Pea and Lentil Production, USADPLC	23
Dry Bean, U.S. Exports by Country of Destination	24 - 25
Dry Pea, U.S. Exports by Country of Destination	26 - 27
U.S. Exports, Dry Beans and Dry Ripe Peas FY Totals, 2005-2010	28
U.S. Exports, by Month, Dry Beans and Peas - Graphs	29 - 33
Pea Bean, Great Northern, Large Lima, Baby Lima	29
Light Red Kidney, Dark Red Kidney, Pinto, Black	30
Legume Seed, Small Reds, Other Kidney, Beans NESOI	31
Green Pea, Lentil, Seed Pea, Yellow Pea	32
Garbanzo, Blackeye, Peas NESOI, Split Peas	33
USDA/F&V Purchases for Domestic Feeding Programs	34
World Pulse Production	35
World Dry Bean Production	36
World Garbanzo Production	37
World Pea Production	38
World Lentil and Lupine Production	39
European Crop Production - Broad and Field Beans	40
European Crop Production - Peas	41
European Crop Production - Kidney Beans, Sweet Lupines	42
European Crop Production - Other Dried Pulses	43
Canadian Pulses Supply and Disposition, European Crop Production - Lentils	44
Selected special crop data, Canada, by crop year, Dry Peas and Dried Beans	45
Selected special crop data, Canada, by crop year, Lentils and Chickpeas	46

Exports of Special Crops, by country of final destination, Canada, Dried Peas	47
Exports of Special Crops, by country of final destination, Canada, Chickpeas	48
Exports of Special Crops, by country of final destination, Canada, Lentils	49
Exports of Special Crops, by country of final destination, Canada, Dried Beans	50
November 2010 estimates of production of principal field crops — Imperial, Canada	51
Australian Crop Production, Production by Province	52
Australian Supply and Disposition of Pulses, Australian Field Pea Production	53
South African Dry Bean Production, Production by Province, Consumption and Producer Price	54
Brazil and Chile, Harvest Area, Yield, Production	55

Dealer Monthly Average Price
Per Cwt By Crop Year Fob
PINTOS - NORTHERN COLORADO

	SEP	OCT	NOV	DEC	JAN	FEB	MAR	APR	MAY	JUN	JUL	AUG	AVG
2007-2008	34.67	35.50	35.50	35.00	35.63	36.25	39.00	40.10	41.00	42.50	43.30	45.50	38.66
2008-2009	48.50	48.00			40.58	40.63	38.25	37.00	37.00	38.00	39.75	40.75	40.85
2009-2010	39.13	39.13	42.50	41.33	40.25	40.38	39.80	38.13	38.00	37.80	37.50		39.45
2010-2011	27.88	27.38	27.55	28.38	31.06	35.00	38.50	38.75	39.75	41.40	46.38	50.90	36.08
2011-2012	55.50	56.75	56.70	59.50									57.11

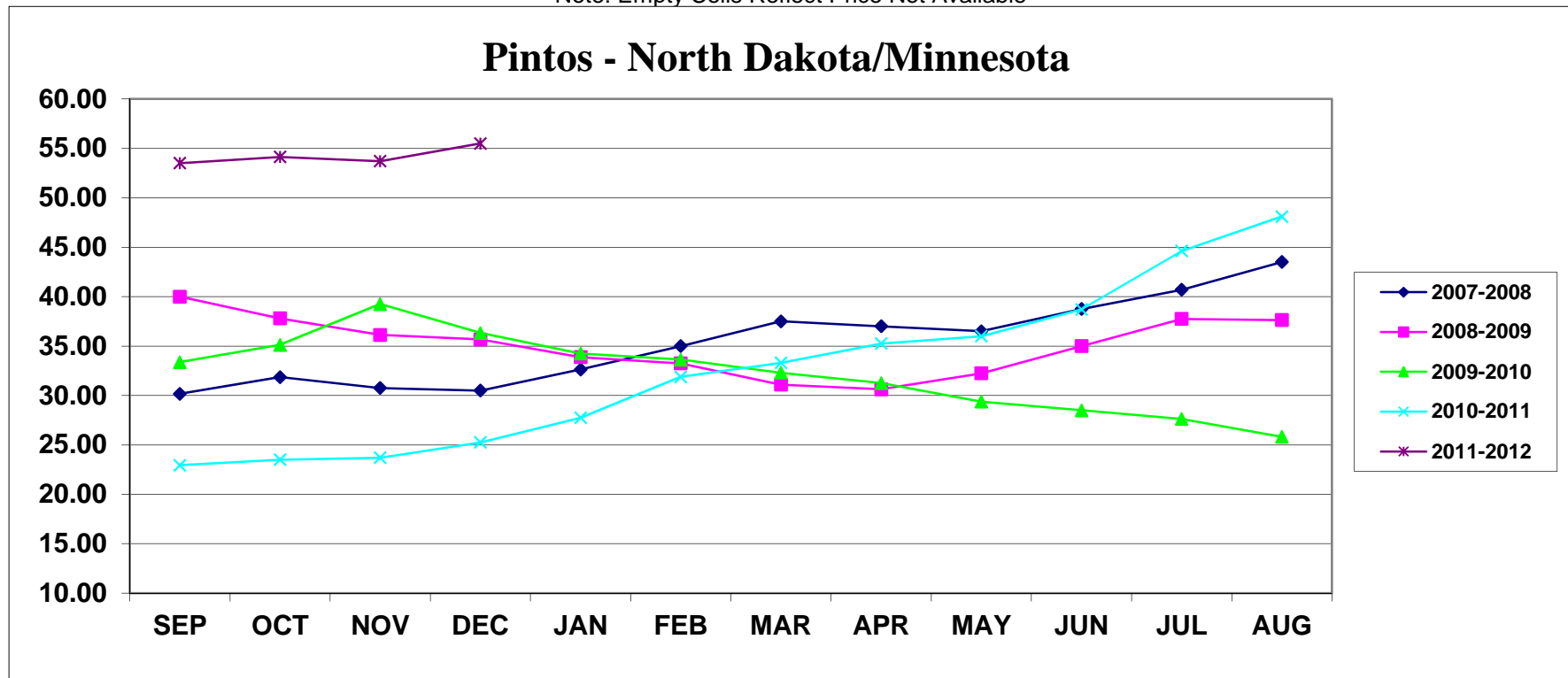
Note: Empty Cells Reflect Price Not Available



Dealer Monthly Average Price
Per Cwt By Crop Year Fob
PINTOS - NORTH DAKOTA/MINNESOTA

	SEP	OCT	NOV	DEC	JAN	FEB	MAR	APR	MAY	JUN	JUL	AUG	AVG
2007-2008	30.17	31.85	30.75	30.50	32.63	35.00	37.50	37.00	36.50	38.75	40.70	43.50	35.40
2008-2009	40.00	37.81	36.13	35.67	33.88	33.25	31.10	30.63	32.25	35.00	37.75	37.63	35.09
2009-2010	33.38	35.13	39.25	36.33	34.25	33.63	32.30	31.25	29.38	28.50	27.63	25.83	32.24
2010-2011	22.94	23.50	23.70	25.25	27.75	31.88	33.30	35.25	36.00	38.70	44.63	48.10	32.58
2011-2012	53.50	54.13	53.70	55.50									54.21

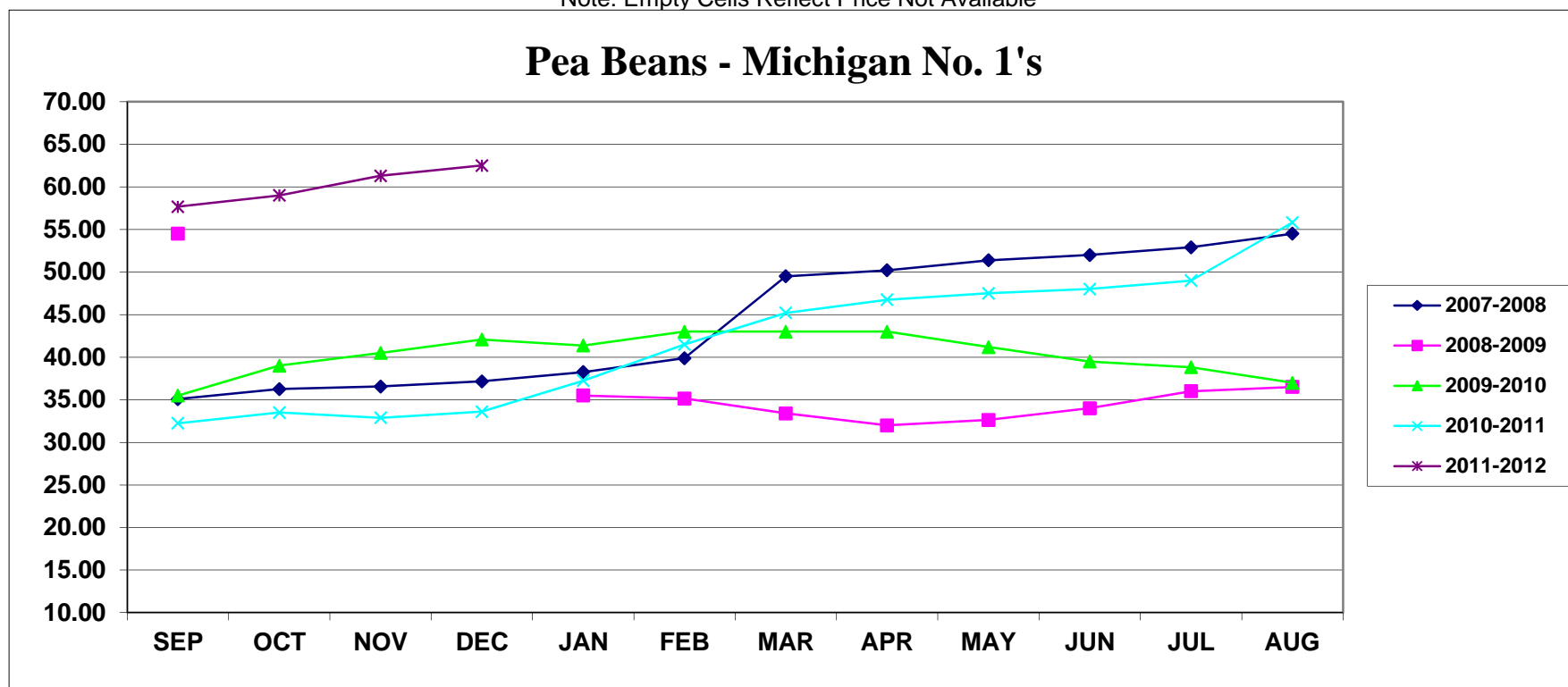
Note: Empty Cells Reflect Price Not Available



Dealer Monthly Average Price
Per Cwt By Crop Year Fob
PEA BEANS - MICHIGAN No. 1's

	SEP	OCT	NOV	DEC	JAN	FEB	MAR	APR	MAY	JUN	JUL	AUG	AVG
2007-2008	35.08	36.25	36.56	37.17	38.25	39.88	49.50	50.20	51.38	52.00	52.90	54.50	44.47
2008-2009	54.50				35.50	35.15	33.40	32.00	32.63	34.00	36.00	36.50	36.63
2009-2010	35.50	39.00	40.50	42.08	41.38	43.00	43.00	43.00	41.19	39.50	38.83	37.00	40.33
2010-2011	32.25	33.50	32.88	33.60	37.25	41.50	45.20	46.75	47.50	48.00	49.00	55.83	41.94
2011-2012	57.67	59.00	61.30	62.50									60.12

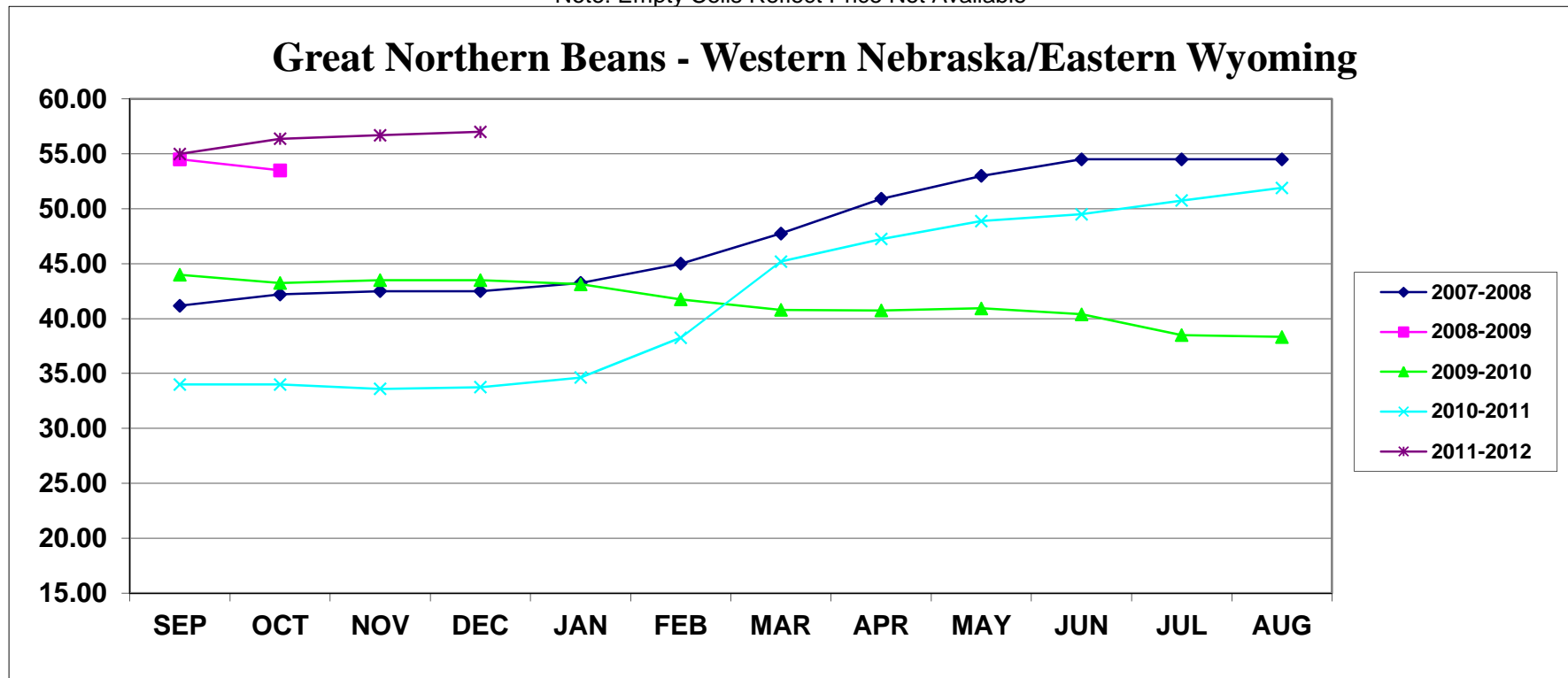
Note: Empty Cells Reflect Price Not Available



Dealer Monthly Average Price
Per Cwt By Crop Year Fob
GREAT NORTHERN - WESTERN NEBRASKA/EASTERN WYOMING

	SEP	OCT	NOV	DEC	JAN	FEB	MAR	APR	MAY	JUN	JUL	AUG	AVG
2007-2008	41.17	42.20	42.50	42.50	43.25	45.00	47.75	50.90	53.00	54.50	54.50	54.50	47.65
2008-2009	54.50	53.50											54.00
2009-2010	44.00	43.25	43.50	43.50	43.13	41.75	40.80	40.75	40.94	40.40	38.50	38.33	41.57
2010-2011	34.00	34.00	33.60	33.75	34.63	38.25	45.20	47.25	48.88	49.50	50.75	51.90	41.81
2011-2012	55.00	56.38	56.70	57.00									56.27

Note: Empty Cells Reflect Price Not Available



Dealer Monthly Average Price Per Cwt By Crop Year Fob

	SEP	OCT	NOV	DEC	JAN	FEB	MAR	APR	MAY	JUN	JUL	AUG	AVG
PINTO - Northeast Colorado													
2007-2008	34.67	35.50	35.50	35.00	35.63	36.25	39.00	40.10	41.00	42.50	43.30	45.50	38.66
2008-2009	48.50	48.00	NA	NA	40.58	40.63	38.25	37.00	37.00	38.00	39.75	40.75	40.85
2009-2010	39.13	39.13	42.50	41.33	40.25	40.38	39.80	38.13	38.00	37.80	37.50		39.45
2010-2011	27.88	27.38	27.55	28.38	31.06	35.00	38.50	38.75	39.75	41.40	46.38	50.90	36.08
2011-2012	55.50	56.75	56.70	59.50									57.11
PINTO - North Dakota/Minnesota													
2007-2008	30.17	31.85	30.75	30.50	32.63	35.00	37.50	37.00	36.50	38.75	40.70	43.50	35.40
2008-2009	40.00	37.81	36.13	35.67	33.88	33.25	31.10	30.63	32.25	35.00	37.75	37.63	35.09
2009-2010	33.38	35.13	39.25	36.33	34.25	33.63	32.30	31.25	29.38	28.50	27.63	25.83	32.24
2010-2011	22.94	23.50	23.70	25.25	27.75	31.88	33.30	35.25	36.00	38.70	44.63	48.10	32.58
2011-2012	53.50	54.13	53.70	55.50									54.21
PINTO - Idaho/Washington													
2007-2008	34.17	35.50	35.88	36.25	37.19	38.00	39.75	40.50	41.75	43.00	43.90	45.50	39.28
2008-2009	NA	NA	NA	NA	48.33	45.38	45.00	NA	43.50	43.50	43.50	NA	44.87
2009-2010	43.17	43.00	44.63	44.50	43.50	42.38	41.85	41.69	41.00	39.70	38.25	37.50	41.76
2010-2011		32.00	31.70	31.50	31.50	34.13	38.10	38.63	39.00	40.40	46.38	50.80	37.65
2011-2012	56.50	57.88	58.20	59.33									57.98
PINTO - North Wyoming/Montana													
2007-2008	NA	NA	NA	NA	NA	NA	NA	NA	NA	NA	NA	NA	NA
2008-2009	NA	NA	NA	NA	NA	NA	NA	NA	NA	NA	NA	NA	NA
2009-2010	NA	NA	NA	NA	NA	NA	NA	NA	NA	NA	NA	NA	NA
2010-2011	NA	29.00	29.50	29.50	31.67	33.00	38.00	39.00	39.50	40.40	45.53	51.60	36.97
2011-2012	55.00	57.00	57.00	57.00									56.50
GREAT NORTHERN - Western Nebraska/Eastern Wyoming													
2007-2008	41.17	42.20	42.50	42.50	43.25	45.00	47.75	50.90	53.00	54.50	54.50	54.50	47.65
2008-2009	54.50	53.50	NA	NA	NA	NA	NA	NA	NA	NA	NA	NA	54.00
2009-2010	44.00	43.25	43.50	43.50	43.13	41.75	40.80	40.75	40.94	40.40	38.50	38.33	41.57
2010-2011	34.00	34.00	33.60	33.75	34.63	38.25	45.20	47.25	48.88	49.50	50.75	51.90	41.81
2011-2012	55.00	56.38	56.70	57.00									56.27
GREAT NORTHERN - North Dakota/Minnesota													
2007-2008	38.00	39.65	39.50	39.50	39.50	40.13	43.13	46.83	NA	NA	NA	NA	40.78
2008-2009	NA	NA	NA	NA	40.00	NA	NA	NA	NA	NA	NA	NA	40.00
2009-2010	41.00	39.38	39.63	39.83	40.00	39.50	39.20	38.50	37.50	37.50	NA	NA	39.20
2010-2011	NA	29.00	29.50	29.50	30.50	36.25	NA	NA	NA	NA	NA	NA	30.95
2011-2012	NA	54.50	NA	NA									54.50

NA=Not Available

W=Withdrawn

Grower Monthly Average Price Per Cwt By Crop Year Fob

	SEP	OCT	NOV	DEC	JAN	FEB	MAR	APR	MAY	JUN	JUL	AUG	AVG
PINTO - Northeast Colorado													
2007-2008	27.00	28.00	27.00	26.50	26.75	29.50	31.75	31.20	32.13	32.50	33.60	36.00	30.16
2008-2009	38.63	34.00	NA	NA	30.33	29.00	28.40	27.50	27.50	28.30	30.25	31.00	30.49
2009-2010	29.00	26.50	29.25	30.00	30.00	30.00	30.00	28.13	27.50	27.50	25.88	23.63	28.12
2010-2011	18.75	19.50	19.50	19.50	20.88	26.25	27.20	28.50	30.00	30.00	33.38	37.80	25.94
2011-2012	42.33	44.50	44.00	44.50									43.83
PINTO - North Dakota/Minnesota													
2007-2008	24.33	25.40	24.13	24.00	25.50	27.75	29.75	29.30	29.50	30.38	31.50	34.38	27.99
2008-2009	32.50	27.17	27.00	27.00	26.25	26.25	24.00	24.25	24.50	26.60	28.75	29.00	26.94
2009-2010	25.63	25.50	30.33	28.00	27.33	26.63	24.70	23.50	23.00	23.00	22.63	20.38	25.05
2010-2011	17.50	18.00	18.00	18.00	20.38	24.38	25.33	26.13	27.00	28.70	32.38	38.40	24.52
2011-2012	42.33	45.00	42.33	43.00									43.17
PINTO - Idaho/Washington													
2007-2008	25.67	27.90	28.00	28.00	28.75	30.00	31.50	32.10	32.50	33.00	33.10	34.25	30.40
2008-2009	38.75	39.50	38.00	38.00	37.88	37.50	37.50	NA	NA	NA	NA	NA	38.16
2009-2010	32.00	31.00	31.75	31.33	31.25	30.75	30.70	30.38	30.00	29.20	28.50	27.17	30.34
2010-2011	NA	23.00	23.00	23.00	23.25	25.25	28.90	29.38	30.00	30.00	34.13	39.00	28.08
2011-2012	43.17	45.00	45.00	45.00									44.54
PINTO - North Wyoming/Montana													
2007-2008	NA	NA	NA	NA	NA	NA	NA	NA	NA	NA	NA	NA	NA
2008-2009	NA	NA	NA	NA	NA	NA	NA	NA	NA	NA	NA	NA	NA
2009-2010	NA	NA	NA	NA	NA	NA	NA	NA	NA	NA	NA	NA	NA
2010-2011	20.50	18.00	18.00	18.50	19.75	24.00	27.00	27.00	27.25	28.60	31.88	36.50	24.75
2011-2012	42.67	44.00	44.00	44.00									43.67
GREAT NORTHERN - Western Nebraska/Eastern Wyoming													
2007-2008	31.33	32.00	32.00	32.00	32.00	32.75	35.75	38.00	40.00	40.00	40.00	41.50	35.61
2008-2009	41.50	NA	NA	NA	NA	NA	NA	NA	26.00	26.80	30.50	32.00	31.36
2009-2010	31.50	30.00	30.00	30.00	30.00	30.00	30.00	30.00	30.00	29.60	28.00	28.00	29.76
2010-2011	25.00	25.00	25.00	25.00	25.63	29.75	34.40	35.00	35.00	35.00	36.25	40.00	30.92
2011-2012	41.33	42.00	42.00	42.00									41.83
GREAT NORTHERN - North Dakota/Minnesota													
2007-2008	30.00	30.00	30.00	30.00	30.25	31.25	33.00	NA	NA	NA	NA	NA	30.64
2008-2009	40.33	NA	NA	NA	34.00	NA	NA	NA	NA	NA	NA	NA	37.17
2009-2010	29.67	29.00	29.00	30.00	30.00	30.00	30.00	30.00	NA	NA	NA	NA	29.71
2010-2011	20.00	20.00	NA	22.75	25.63	29.75	29.50	31.50	31.50	31.50	NA	38.00	28.01
2011-2012	40.67	41.00	41.00	41.00									40.92

NA=Not Available

W=Withdrawn

Dealer Monthly Average Price Per Cwt By Crop Year Fob

	SEP	OCT	NOV	DEC	JAN	FEB	MAR	APR	MAY	JUN	JUL	AUG	AVG
BLACK - Michigan													
2007-2008	35.17	36.50	37.13	36.17	38.50	40.13	42.83	49.25	49.75	50.00	51.70	54.50	43.47
2008-2009	52.25	50.00	43.00	42.00	45.00	45.13	43.50	44.13	46.67	49.75	49.50	49.50	46.70
2009-2010	45.50	44.75	47.75	47.92	47.94	48.38	47.60	47.50	47.50	46.50	42.00	39.13	46.04
2010-2011	32.75	33.25	35.40	37.50	37.88	42.50	49.00	49.00	49.00	49.00	49.00	52.30	43.05
2011-2012	54.83	57.00	56.90	56.50									56.31
BLACK - North Dakota/Minnesota													
2007-2008	30.67	31.90	32.50	33.17	34.75	36.63	39.13	42.38	42.75	44.50	46.20	47.50	38.51
2008-2009	47.50	50.00	36.50	37.00	40.00	39.88	37.38	40.75	42.25	43.50	43.50	49.50	42.31
2009-2010	NA	39.50	43.00	42.25	42.00	48.50	NA	NA	44.50	44.50	40.50	39.33	42.68
2010-2011	29.00	30.13	34.00	35.00	35.75	39.17	43.80	45.00	46.25	47.30	48.50	51.50	40.45
2011-2012	54.00	55.25	55.00	55.00									54.81
PINK - Idaho/Washington													
2007-2008	35.17	35.70	36.50	36.50	36.56	38.06	39.75	NA	NA	NA	NA	NA	36.89
2008-2009	NA	NA	NA	NA	50.00	50.00	51.06	50.17	49.83	49.50	49.50	NA	50.01
2009-2010	45.83	45.50	44.50	44.33	44.13	44.67	44.60	44.25	43.25	42.50	41.13	40.17	43.74
2010-2011	NA	38.81	39.00	39.00	39.00	39.75	43.00	43.50	44.88	47.50	51.63	53.10	43.56
2011-2012	NA	56.50	58.20	59.58									58.09
PINK - North Dakota/Minnesota													
2007-2008	NA	31.88	32.50	32.50	32.63	34.00	35.17	NA	NA	NA	NA	NA	33.11
2008-2009	NA	NA	NA	NA	NA	NA	NA	NA	NA	NA	NA	NA	NA
2009-2010	36.75	NA	NA	NA	NA	NA	NA	NA	NA	35.00	35.38	33.81	35.24
2010-2011	31.50	32.25	33.80	34.50	36.50	39.00	44.00	44.00	45.00	47.40	49.75	52.10	40.82
2011-2012	NA	55.50	56.40	57.33									56.41
GARBANZO - Idaho/Washington													
2007-2008	38.33	40.70	41.00	39.67	39.38	39.81	41.42	45.17	46.25	51.00	51.30	52.25	43.86
2008-2009	52.50	NA	NA	NA	39.50	37.63	36.40	35.25	34.75	35.50	36.94	38.63	38.57
2009-2010	38.50	38.75	40.69	40.33	40.38	39.50	39.10	39.50	38.63	37.80	37.50	39.50	39.18
2010-2011	39.63	41.08	41.90	42.00	43.75	47.25	51.00	55.13	59.50	61.90	63.50	NA	49.69
2011-2012	66.00	65.75	62.00	61.00									63.69
GARBANZO - North Dakota/Montana													
2007-2008	NA	NA	NA	NA	NA	NA	NA	NA	NA	NA	NA	NA	NA
2008-2009	NA	NA	NA	NA	NA	NA	NA	NA	NA	NA	NA	NA	NA
2009-2010	NA	NA	NA	NA	NA	NA	NA	NA	NA	NA	NA	NA	NA
2010-2011	NA	NA	NA	NA	30.13	33.50	33.50	NA	NA	NA	NA	45.00	35.53
2011-2012	NA	NA	NA	62.00									62.00

NA=Not Available

W=Withdrawn

Grower Monthly Average Price Per Cwt By Crop Year Fob

	SEP	OCT	NOV	DEC	JAN	FEB	MAR	APR	MAY	JUN	JUL	AUG	AVG
BLACK - Michigan													
2007-2008	26.50	30.00	30.13	30.50	30.56	31.75	33.69	35.42	NA	NA	NA	NA	31.07
2008-2009	42.25	NA	NA	NA	32.50	32.50	32.00	30.63	32.88	33.00	33.50	NA	33.66
2009-2010	30.00	35.00	35.00	36.00	37.33	39.00	39.25	39.25	39.81	40.06	NA	NA	37.07
2010-2011	NA	NA	28.75	29.19	29.19	29.63	NA	NA	NA	NA	NA	NA	29.19
2011-2012	47.75	48.81	49.00	49.00									48.64
BLACK - North Dakota/Minnesota													
2007-2008	22.83	23.50	24.50	24.50	25.50	27.75	29.50	31.40	29.50	NA	NA	NA	26.55
2008-2009	35.00	NA	NA	NA	28.88	30.00	29.90	29.50	29.75	30.00	30.00	NA	30.38
2009-2010	27.67	28.25	29.25	30.00	30.00	30.00	30.00	30.00	30.00	30.00	30.00	29.67	29.57
2010-2011	19.50	20.38	22.60	23.00	24.13	27.88	31.60	32.50	32.50	32.90	34.00	37.60	28.22
2010-2011	43.33	45.00	45.00	45.00									44.58
PINK - Idaho/Washington													
2007-2008	25.50	26.30	26.50	26.50	26.88	29.63	31.67	32.00	NA	NA	NA	NA	28.12
2008-2009	37.50	37.50	37.50	37.50	38.50	38.63	38.00	34.00	34.00	NA	NA	NA	37.01
2009-2010	32.67	31.00	31.00	31.00	30.67	30.50	30.60	30.50	30.00	30.00	29.50	30.00	30.62
2010-2011	NA	24.50	24.50	24.50	24.75	26.50	29.40	30.25	31.00	31.00	31.00	NA	27.74
2010-2011	43.50	45.00	45.00	45.00									44.63
PINK - North Dakota/Minnesota													
2007-2008	23.50	23.50	23.50	23.50	23.50	24.63	26.00	NA	NA	NA	NA	NA	24.02
2008-2009	NA	NA	NA	NA	NA	28.50	28.50	NA	NA	NA	NA	NA	28.50
2009-2010	28.00	25.00	NA	NA	NA	NA	28.00	28.00	NA	28.00	28.00	28.00	27.57
2010-2011	NA	NA	21.00	21.00	21.63	26.00	28.40	30.00	30.00	30.00	30.00	NA	26.45
2011-2012	40.00	40.50	41.00	41.00									40.63
GARBANZO - Idaho/Washington													
2007-2008	30.50	32.50	32.50	31.17	29.88	31.38	32.83	34.60	35.50	40.50	40.50	42.50	34.53
2008-2009	42.50	40.00	40.00	NA	29.00	28.75	27.00	25.00	25.38	25.80	27.25	30.50	31.02
2009-2010	28.70	28.88	30.75	31.67	30.75	30.50	29.40	31.00	30.50	29.20	28.00	27.50	29.74
2010-2011	28.00	29.25	31.00	31.50	31.88	33.13	35.30	37.75	40.50	41.70	42.50	44.20	35.56
2011-2012	49.00	49.00	47.75	46.17									47.98
GARBANZO - North Dakota/Montana													
2007-2008	NA	NA	NA	NA	NA	NA	NA	NA	NA	NA	NA	NA	NA
2008-2009	NA	NA	NA	NA	NA	NA	NA	NA	NA	NA	NA	NA	NA
2009-2010	NA	NA	NA	NA	NA	NA	NA	NA	NA	NA	NA	NA	NA
2010-2011	NA	NA	29.00	29.00	30.13	33.50	33.50	NA	NA	NA	NA	NA	31.03
2011-2012	NA	44.50	44.50	45.00									44.67

NA=Not Available

W=Withdrawn

Dealer Monthly Average Price Per Cwt By Crop Year Fob

	SEP	OCT	NOV	DEC	JAN	FEB	MAR	APR	MAY	JUN	JUL	AUG	AVG
PEA BEAN - Michigan No 1's													
2007-2008	35.08	36.25	36.56	37.17	38.25	39.88	49.50	50.30	51.38	52.00	52.90	54.50	44.48
2008-2009	54.50	NA	NA	NA	35.50	35.13	33.40	32.00	32.63	34.00	36.00	36.50	36.63
2009-2010	35.50	39.00	40.50	42.08	41.83	43.00	43.00	43.00	41.19	39.50	38.83	37.00	40.37
2010-2011	32.25	33.50	32.88	33.60	37.25	41.50	45.20	46.75	47.50	48.00	49.00	55.83	41.94
2011-2012	57.67	59.00	61.30	62.50									60.12
PEA BEAN - North Dakota/Minnesota													
2007-2008	30.83	31.50	32.44	33.42	35.13	36.50	42.00	47.75	48.50	49.50	50.50	50.50	40.71
2008-2009	50.50	NA	NA	NA	35.50	32.88	30.80	29.00	29.00	29.00	30.50	32.00	33.24
2009-2010	32.25	32.00	NA	38.50	38.50	39.38	39.50	39.25	37.00	36.50	35.83	34.50	36.66
2010-2011	29.00	29.50	30.80	31.75	34.67	39.00	41.50	43.88	44.63	46.00	49.00	52.70	39.37
2011-2012	55.50	58.88	59.70	59.67									58.44
LIGHT RED KIDNEY - Michigan													
2007-2008	48.25	52.40	54.25	54.83	55.50	57.00	NA	NA	NA	NA	NA	NA	53.71
2008-2009	NA	NA	NA	NA	NA	57.83	57.50	NA	NA	NA	NA	NA	57.67
2009-2010	45.17	44.50	NA	NA	NA	38.50	43.50	42.50	42.00	40.90	40.25	39.38	41.86
2010-2011	NA	41.00	41.00	41.00	43.50	46.63	49.00	NA	NA	NA	NA	NA	43.69
2011-2012	62.75	65.50	65.50	65.50									64.81
LIGHT RED KIDNEY - Eastern Colorado/Southwest Nebraska													
2007-2008	46.17	52.70	54.38	54.83	56.00	57.00	60.00	65.00	NA	54.50	NA	NA	55.62
2008-2009	NA	NA	NA	63.50	NA	NA	60.50	NA	NA	49.00	48.50	48.00	53.90
2009-2010	45.75	45.00	45.63	45.17	44.63	44.50	44.40	43.50	41.67	41.50	40.75	40.17	43.56
2010-2011	40.00	40.25	41.20	42.00	42.38	46.13	50.00	51.75	52.50	53.70	57.63	61.50	48.25
2011-2012	NA	65.50	65.50	65.50									65.50
LIGHT RED KIDNEY -Minnesota/Wisconsin													
2007-2008	48.25	51.90	53.25	53.83	55.25	57.00	NA	NA	NA	NA	NA	NA	53.25
2008-2009	NA	NA	NA	NA	59.50	57.00	NA	NA	NA	NA	NA	NA	58.25
2009-2010	NA	NA	44.50	44.25	NA	44.44	43.90	42.50	41.00	40.00	39.38	39.00	42.11
2010-2011	40.00	39.25	39.00	39.00	40.88	44.50	49.40	51.38	52.63	54.30	57.38	61.10	47.40
2011-2012	NA	66.00	66.50	66.50									66.33

NA=Not Available

W=Withdrawn

**Grower Monthly Average Price
Per Cwt By Crop Year Fob**

	SEP	OCT	NOV	DEC	JAN	FEB	MAR	APR	MAY	JUN	JUL	AUG	AVG
PEA BEAN - Michigan No 1's													
2007-2008	27.00	30.50	30.50	30.50	31.50	34.00	35.63	38.50	38.50	NA	NA	40.13	33.68
2008-2009	NA	NA	NA	NA	25.00	25.00	24.80	24.00	23.75	26.90	27.50	NA	25.28
2009-2010	29.75	30.25	30.50	30.50	35.00	35.00	35.00	34.00	33.00	33.00	29.00	29.00	32.00
2010-2011	24.00	25.38	26.50	26.50	28.50	30.00	NA	NA	NA	NA	NA	NA	26.81
2011-2012	47.83	48.75	49.00	49.00									48.65
PEA BEAN - North Dakota/Minnesota													
2007-2008	24.67	24.00	24.00	24.00	25.50	27.88	32.50	35.00	35.00	35.88	NA	NA	28.84
2008-2009	36.50	24.50	24.50	24.50	22.00	22.00	22.00	21.63	21.50	23.40	24.25	24.50	24.27
2009-2010	25.25	24.75	27.00	27.00	30.00	29.25	29.80	29.13	29.38	27.80	27.50	26.38	27.77
2010-2011	21.38	21.13	21.50	21.75	22.81	26.00	30.50	31.00	32.00	32.00	33.88	39.30	27.77
2011-2012	43.00	45.00	45.00	45.00									44.50
LIGHT RED KIDNEY - Michigan													
2007-2008	35.50	40.00	40.00	40.00	40.38	40.50	NA	NA	NA	NA	NA	NA	39.40
2008-2009	52.00	NA	NA	NA	NA	NA	NA	NA	NA	NA	NA	NA	52.00
2009-2010	35.00	NA	NA	NA	NA	NA	NA	NA	NA	NA	NA	NA	35.00
2010-2011	NA	31.50	31.50	31.50	31.50	31.50	NA	NA	NA	NA	NA	NA	31.50
2011-2012	NA	53.50	53.50	53.50									53.50
LIGHT RED KIDNEY - Eastern Colorado/Southwest Nebraska													
2007-2008	37.17	42.00	42.00	42.00	44.63	45.00	45.00	45.90	46.50	46.50	46.50	46.50	44.14
2008-2009	54.33	NA	NA	NA	NA	NA	NA	NA	NA	NA	NA	40.00	47.17
2009-2010	37.00	35.00	35.00	35.00	35.00	35.00	35.00	33.50	32.63	32.20	32.00	32.00	34.11
2010-2011	29.88	29.50	29.50	29.50	30.75	33.88	36.20	36.50	38.00	38.00	40.50	47.60	34.98
2011-2012	50.00	50.00	50.00	50.00									50.00
LIGHT RED KIDNEY -Minnesota/Wisconsin													
2007-2008	NA	NA	NA	NA	NA	NA	NA	NA	NA	NA	NA	NA	NA
2008-2009	NA	NA	NA	NA	NA	NA	NA	NA	NA	NA	NA	NA	NA
2009-2010	NA	NA	NA	NA	NA	NA	NA	NA	NA	NA	NA	NA	NA
2010-2011	NA	NA	NA	NA	31.25	34.88	37.60	38.00	38.00	38.00	38.33	NA	36.58
2011-2012	51.17	51.00	53.60	54.50									52.57

NA=Not Available

W=Withdrawn

Dealer Monthly Average Price Per Cwt By Crop Year Fob

	SEP	OCT	NOV	DEC	JAN	FEB	MAR	APR	MAY	JUN	JUL	AUG	AVG
DARK RED KIDNEY - Michigan													
2007-2008	41.00	NA	NA	NA	NA	57.50	NA	NA	NA	NA	NA	NA	49.25
2008-2009	NA	NA	NA	NA	NA	58.50	58.50	NA	49.00	49.00	49.00	NA	52.80
2009-2010	NA	NA	NA	NA	NA	NA	NA	43.69	41.83	41.50	41.25	40.50	41.75
2010-2011	NA	NA	NA	NA	NA	50.50	NA	NA	NA	NA	NA	NA	50.50
2011-2012	NA	NA	NA	68.00									68.00
DARK RED KIDNEY - Minnesota/Wisconsin													
2007-2008	41.00	49.33	50.50	51.00	NA	51.00	NA	NA	NA	NA	NA	NA	48.57
2008-2009	NA	NA	NA	NA	NA	57.50	57.50	NA	NA	NA	NA	NA	57.50
2009-2010	NA	NA	45.50	45.00	NA	44.63	NA	43.75	41.67	41.10	40.50	40.50	42.83
2010-2011	NA	41.00	42.20	44.50	46.50	50.63	54.00	55.50	56.63	57.50	60.00	62.40	51.90
2011-2012	NA	67.00	67.00	67.67									67.22
SMALL RED - Idaho/Washington													
2007-2008	35.17	38.40	41.63	43.17	47.00	49.00	50.25	51.50	NA	NA	NA	NA	44.52
2008-2009	58.00	58.00	58.00	NA	50.00	50.63	50.40	48.00	48.67	NA	NA	NA	52.71
2009-2010	43.50	44.25	44.38	44.50	43.88	44.50	44.10	43.63	42.88	42.50	41.25	40.50	43.32
2010-2011	39.00	41.00	43.40	44.00	45.88	48.50	53.60	54.00	54.00	54.00	NA	NA	47.74
2011-2012	60.17	60.63	60.50	61.17									60.62
SMALL RED - Michigan													
2007-2008	36.17	41.05	43.75	45.67	48.00	49.63	NA	NA	NA	NA	NA	NA	44.05
2008-2009	NA	NA	NA	NA	45.00	43.75	42.30	41.33	41.67	NA	NA	NA	42.81
2009-2010	35.83	35.00	38.00	37.00	37.00	36.88	37.00	NA	35.33	35.83	35.50	35.00	36.22
2010-2011	36.88	40.88	44.30	45.00	45.00	49.17	53.60	54.00	54.00	54.00	NA	NA	47.68
2011-2012	NA	63.63	64.60	65.00									64.41
SMALL RED - North Dakota/Minnesota													
2007-2008	NA	39.00	37.38	38.67	40.38	42.88	43.67	NA	NA	NA	NA	NA	40.33
2008-2009	NA	NA	58.00	NA	NA	NA	NA	38.50	38.83	NA	NA	NA	45.11
2009-2010	36.75	NA	NA	NA	NA	34.50	34.50	34.50	NA	32.50	33.00	32.00	33.96
2010-2011	NA	NA	NA	NA	NA	47.50	NA	NA	NA	NA	NA	NA	47.50
2011-2012	NA	NA	NA	NA									

NA=Not Available

W=Withdrawn

Grower Monthly Average Price Per Cwt By Crop Year Fob

	SEP	OCT	NOV	DEC	JAN	FEB	MAR	APR	MAY	JUN	JUL	AUG	AVG
DARK RED KIDNEY - Michigan													
2007-2008	35.00	NA	NA	NA	NA	NA	NA	NA	NA	NA	NA	NA	35.00
2008-2009	35.00	NA	NA	NA	NA	NA	NA	NA	NA	NA	NA	NA	35.00
2009-2010	NA	NA	NA	NA	NA	NA	NA	NA	NA	NA	NA	NA	NA
2010-2011	NA	NA	NA	NA	NA	NA	NA	NA	NA	NA	NA	NA	NA
2011-2012	NA	NA	NA	NA									NA
DARK RED KIDNEY - Minnesota/Wisconsin													
2007-2008	34.00	37.00	37.00	37.00	37.00	NA	NA	NA	NA	NA	NA	NA	36.40
2008-2009	NA	NA	NA	NA	NA	NA	NA	NA	NA	NA	NA	NA	NA
2009-2010	NA	NA	34.25	33.50	33.50	34.00	34.00	34.00	NA	NA	NA	NA	33.88
2010-2011	32.38	32.50	32.90	32.00	37.50	41.00	43.60	44.25	44.50	44.50	47.13	48.00	40.02
2011-2012	51.50	53.50	53.50	53.50									53.00
SMALL RED - Idaho/Washington													
2007-2008	25.50	27.90	29.75	30.00	34.63	37.88	41.00	41.00	40.50	NA	NA	NA	34.24
2008-2009	42.50	43.13	41.50	41.50	41.00	39.38	39.00	NA	NA	NA	NA	NA	41.14
2009-2010	33.33	31.00	31.00	31.00	31.00	30.25	30.40	30.25	30.00	30.00	30.00	30.00	30.69
2010-2011	NA	25.13	26.40	28.00	28.25	29.25	30.50	NA	NA	NA	NA	NA	27.92
2011-2012	43.67	45.13	45.50	45.67									44.99
SMALL RED - Michigan													
2007-2008	NA	29.50	30.00	30.00	36.00	36.75	NA	NA	NA	NA	NA	NA	32.45
2008-2009	44.50	NA	NA	NA	26.00	26.00	26.00	26.00	26.00	26.00	26.25	26.50	28.14
2009-2010	26.50	26.50	26.50	26.50	26.50	29.00	29.50	29.63	30.00	30.00	30.00	NA	28.24
2010-2011	NA	27.63	29.20	30.00	30.00	NA	NA	NA	NA	NA	NA	NA	29.21
2011-2012	48.50	55.00	55.00	55.00									53.38
SMALL RED - North Dakota/Minnesota													
2007-2008	23.50	24.20	24.25	24.50	25.13	25.50	26.00	NA	NA	NA	NA	NA	24.73
2008-2009	NA	NA	NA	NA	NA	30.50	30.50	NA	NA	NA	NA	NA	30.50
2009-2010	NA	NA	NA	NA	NA	NA	28.00	28.00	NA	28.00	28.00	28.00	28.00
2010-2011	NA	NA	21.00	21.00	NA	NA	NA	NA	NA	NA	NA	NA	21.00
2011-2012	NA	NA	40.00	40.00									40.00

NA=Not Available

W=Withdrawn

Dealer Monthly Average Price
Per Cwt By Crop Year Fob

	SEP	OCT	NOV	DEC	JAN	FEB	MAR	APR	MAY	JUN	JUL	AUG	AVG
BREWER LENTIL - Idaho/Washington													
2007-2008	21.00	30.50	35.25	37.50	38.19	38.50	39.50	40.40	40.50	40.50	40.50	NA	36.58
2008-2009	NA	NA	NA	NA	35.67	37.50	38.35	40.06	41.00	41.30	41.00	34.50	38.67
2009-2010	31.75	30.75	29.63	34.75	36.25	37.25	36.50	36.25	36.25	36.50	NA	NA	34.59
2010-2011	32.08	39.13	40.70	41.00	42.13	45.50	45.50	45.13	45.00	NA	44.00	44.00	42.20
2011-2012	44.50	44.50	44.50	NA									44.50
PARDINA LENTIL - Idaho/Washington													
2007-2008	30.58	27.70	39.75	40.50	40.25	40.06	40.88	41.50	41.00	40.75	41.10	NA	38.55
2008-2009	NA	52.00	NA	40.00	35.75	37.63	38.95	40.75	40.88	41.90	42.50	34.50	40.49
2009-2010	31.95	29.75	29.63	31.00	35.83	35.75	36.55	37.13	37.00	36.50	NA	NA	34.11
2010-2011	35.00	37.06	36.70	36.50	36.50	37.75	37.30	37.00	37.00	37.50	37.88	38.00	37.02
2011-2012	40.00	40.25	40.10	38.50									39.71
GREEN SPLIT PEA - Idaho/Washington													
2007-2008	20.50	24.10	26.63	27.33	27.88	28.38	30.50	32.50	32.50	32.00	31.20	31.50	28.75
2008-2009	31.50	NA	NA	26.00	24.00	24.63	25.44	26.13	25.88	25.50	25.00	20.50	25.46
2009-2010	20.15	20.50	19.81	20.50	20.94	21.06	20.90	20.50	20.25	20.00	19.50	18.58	20.22
2010-2011	NA	19.94	20.93	21.50	21.88	22.25	23.00	24.06	23.33	23.50	25.81	26.63	22.98
2011-2012	27.19	28.38	28.50	28.50									28.14
WHOLE GREEN PEA - Idaho/Washington													
2007-2008	16.06	18.40	20.41	21.08	22.88	24.63	26.69	27.95	27.63	27.63	27.55	27.50	24.03
2008-2009	26.00	21.75	20.00	19.00	19.94	21.19	21.65	22.69	22.88	22.30	21.50	15.83	21.23
2009-2010	15.30	15.59	16.22	17.17	17.50	16.83	NA	NA	15.38	15.50	NA	15.00	16.05
2010-2011	14.67	16.25	16.80	17.00	17.44	17.88	17.80	18.06	18.50	19.38	21.00	21.20	18.00
2011-2012	22.00	22.75	23.00	23.00									22.69
WHOLE GREEN PEA - North Dakota/Montana													
2007-2008	NA	17.50	17.75	19.50	19.50	21.25	NA	23.00	NA	NA	NA	NA	19.75
2008-2009	NA	NA	NA	NA	NA	18.33	18.06	16.50	16.19	17.63	NA	12.83	16.59
2009-2010	NA	13.00	14.25	NA	NA	NA	NA	10.20	NA	12.19	NA	NA	12.41
2010-2011	NA	NA	14.75	15.08	15.21	16.93	NA	NA	16.05	16.05	18.27	NA	16.05
2011-2012	NA	NA	20.50	NA									20.50

NA=Not Available
W=Withdrawn

Grower Monthly Average Price Per Cwt By Crop Year Fob

	SEP	OCT	NOV	DEC	JAN	FEB	MAR	APR	MAY	JUN	JUL	AUG	AVG
BREWER LENTIL - Idaho/Washington													
2007-2008	20.38	24.40	28.00	30.00	30.38	30.13	32.38	34.38	33.88	34.00	34.20	34.50	30.55
2008-2009	36.38	38.00	NA	NA	27.75	28.75	29.00	31.50	32.38	32.10	30.00	25.75	31.16
2009-2010	23.90	23.00	23.63	25.83	28.67	29.25	29.00	29.00	28.50	28.00	27.50	22.50	26.57
2010-2011	25.00	29.00	31.00	31.00	31.00	32.50	35.50	35.50	35.17	35.00	35.00	35.40	32.59
2011-2012	35.25	35.00	NA	NA									35.13
PARDINA LENTIL - Idaho/Washington													
2007-2008	24.06	30.40	31.00	32.17	31.38	31.63	32.75	33.80	33.88	34.00	34.20	NA	31.75
2008-2009	38.00	38.00	NA	30.00	29.00	29.00	29.40	31.50	32.38	32.50	30.67	25.75	31.47
2009-2010	23.90	23.00	22.75	25.17	26.38	28.25	28.80	29.00	28.50	28.00	27.17	22.00	26.08
2010-2011	24.50	29.00	30.50	30.50	30.50	30.63	30.60	29.75	29.75	30.00	29.88	31.20	29.73
2011-2012	32.00	32.50	32.70	31.00									32.05
WHOLE GREEN PEA - Idaho/Washington													
2007-2008	11.78	13.00	13.50	14.08	15.56	17.31	18.44	18.90	18.75	18.75	18.70	18.33	16.43
2008-2009	17.25	14.75	14.75	13.50	13.63	13.81	14.45	14.88	15.25	15.90	14.50	10.63	14.44
2009-2010	9.50	9.50	9.38	9.83	10.00	9.75	9.75	9.75	9.75	9.75	9.50	9.17	9.64
2010-2011	9.38	10.13	10.40	10.50	10.75	11.50	12.50	12.50	12.50	12.50	13.00	13.70	11.61
2011-2012	15.00	15.44	15.50	15.50									15.36
WHOLE GREEN PEA -North Dakota/Montana													
2007-2008	10.50	13.06	14.27	16.63	17.14	18.42	19.83	18.15	NA	NA	NA	NA	16.00
2008-2009	19.00	NA	NA	NA	NA	14.14	12.81	12.06	13.13	13.08	12.13	10.93	13.41
2009-2010	7.26	7.92	9.48	10.50	10.63	9.58	9.33	8.34	8.13	7.57	8.15	7.66	8.71
2010-2011	8.40	9.32	10.46	10.71	11.47	12.98	12.23	11.98	11.98	12.65	14.37	14.05	11.72
2011-2012	14.06	15.73	15.84	15.70									15.33

NA=Not Available
W=Withdrawn

Dealer Monthly Average Price

Per Cwt By Crop Year Fob

	SEP	OCT	NOV	DEC	JAN	FEB	MAR	APR	MAY	JUN	JUL	AUG	AVG
AUSTRIAN WINTER PEA - Idaho/Washington													
2007-2008	19.50	19.50	NA	NA	NA	NA	30.00	30.00	NA	NA	NA	NA	24.75
2008-2009	NA	39.50	NA	NA	NA	NA	NA	NA	NA	NA	NA	NA	39.50
2009-2010	30.60	31.00	32.00	32.00	NA	NA	NA	NA	NA	NA	24.00	NA	29.92
2010-2011	23.50	NA	24.50	24.50	24.50	24.50	24.88	24.88	24.50	24.50	24.50	NA	24.48
2011-2012	26.00	26.00	25.80	25.00									25.70
RICICLEA LENTIL - North Dakota/Montana													
2007-2008	NA	NA	32.50	33.33	34.50	35.00	NA	NA	NA	NA	NA	NA	33.83
2008-2009	NA	NA	NA	NA	NA	35.50	37.00	37.75	39.38	41.00	NA	31.50	37.02
2009-2010	32.50	29.83	32.50	NA	NA	35.50	NA	NA	NA	NA	NA	NA	32.58
2010-2011	NA	NA	39.00	39.00	39.13	39.50	NA	NA	36.00	36.00	NA	35.50	37.73
2011-2012	NA	NA	32.00	27.00									29.50
YELLOW SPLIT PEA - Idaho/Washington													
2007-2008	19.44	20.25	25.50	26.00	26.50	27.75	29.00	30.20	30.00	NA	30.33	NA	26.50
2008-2009	NA	NA	NA	NA	23.00	23.50	NA	NA	NA	NA	NA	NA	23.25
2009-2010	NA	NA	NA	20.13	NA	NA	18.79	19.00	NA	NA	NA	NA	19.31
2010-2011	NA	18.75	NA	NA	21.50	21.50	21.50	NA	NA	NA	NA	NA	20.81
2011-2012	NA	NA	NA	NA									
WHOLE YELLOW PEA - Idaho/Washington													
2007-2008	15.06	16.81	20.00	20.25	21.25	21.50	25.50	26.75	NA	NA	26.50	25.50	21.91
2008-2009	NA	NA	NA	NA	NA	NA	NA	NA	NA	NA	NA	NA	NA
2009-2010	NA	NA	NA	16.75	NA	NA	NA	NA	NA	NA	NA	NA	16.75
2010-2011	NA	18.25	NA	NA	16.50	16.50	NA	NA	NA	NA	NA	NA	17.08
2010-2011	NA	NA	NA	NA									NA
WHOLE YELLOW PEA - North Dakota/Montana													
2007-2008	15.00	15.00	16.75	18.00	18.25	NA	20.13	19.44	NA	NA	NA	NA	17.51
2008-2009	NA	NA	NA	NA	NA	15.00	NA	NA	14.60	13.63	NA	NA	14.41
2009-2010	NA	12.00	11.50	NA	NA	NA	NA	NA	NA	NA	NA	NA	11.75
2010-2011	NA	NA	NA	12.80	13.30	15.65	NA	NA	NA	NA	NA	NA	13.92
2010-2011	NA	NA	NA	NA									NA

NA=Not Available
W=Withdrawn

Grower Monthly Average Price Per Cwt By Crop Year Fob

	SEP	OCT	NOV	DEC	JAN	FEB	MAR	APR	MAY	JUN	JUL	AUG	AVG
AUSTRIAN WINTER PEA - Idaho/Washington													
2007-2008	13.00	13.00	13.00	13.00	NA	NA	NA	NA	NA	NA	18.00	NA	14.00
2008-2009	25.00	25.00	13.00	NA	NA	NA	NA	NA	NA	NA	NA	NA	21.00
2009-2010	18.00	18.00	18.00	18.00	18.00	18.00	18.00	18.00	18.00	18.00	18.00	18.00	18.00
2010-2011	17.00	18.00	18.00	18.00	18.00	18.00	18.00	18.00	18.00	18.00	18.00	NA	17.91
2011-2012	21.00	21.00	20.60	18.50									20.28
RICHLEA LENTIL - North Dakota/Montana													
2007-2008	14.75	23.82	24.50	24.50	25.50	27.75	29.75	31.90	NA	NA	33.00	33.00	26.85
2008-2009	NA	NA	NA	NA	NA	27.33	27.20	28.50	31.00	31.67	30.50	26.13	28.90
2009-2010	31.30	22.00	28.88	31.00	30.88	29.13	27.55	29.63	28.50	28.00	28.00	20.50	27.95
2010-2011	29.17	31.00	31.50	31.50	31.50	32.13	30.00	27.13	26.00	28.30	30.00	28.40	29.72
2011-2012	28.00	27.25	26.00	21.50									25.69
WHOLE YELLOW PEA - Idaho/Washington													
2007-2008	10.69	11.80	13.00	13.33	14.81	16.06	17.44	17.90	17.50	NA	17.63	14.75	14.99
2008-2009	13.15	11.63	11.75	10.75	10.75	10.75	10.75	NA	9.75	9.80	9.26	9.50	10.71
2009-2010	8.80	8.75	8.75	9.50	9.19	10.00	9.70	9.50	9.50	9.50	9.25	8.00	9.20
2010-2011	7.75	8.50	9.06	9.25	9.50	10.19	11.00	11.50	11.63	12.00	12.75	13.70	10.57
2011-2012	14.25	14.25	14.65	14.75									14.48
WHOLE YELLOW PEA - North Dakota/Montana													
2007-2008	10.06	11.83	13.33	15.12	16.12	17.29	17.19	15.57	14.73	NA	NA	13.46	14.47
2008-2009	13.00	NA	NA	NA	NA	9.66	9.37	8.38	8.49	9.27	8.88	7.78	9.35
2009-2010	6.54	6.50	7.88	8.50	8.57	8.04	7.34	6.95	6.79	6.39	6.88	6.67	7.25
2010-2011	6.91	7.75	8.61	9.40	10.56	12.25	11.94	12.08	12.39	14.58	15.84	15.15	11.46
2011-2012	14.79	16.15	16.25	16.53									15.93

NA=Not Available
W=Withdrawn

**Dealer Monthly Average Price
Per Cwt By Crop Year Fob**

	SEP	OCT	NOV	DEC	JAN	FEB	MAR	APR	MAY	JUN	JUL	AUG	AVG
BABY LIMA - California													
2007-2008	41.50	41.50	41.88	42.00	42.25	43.63	44.00	NA	NA	NA	NA	NA	42.39
2008-2009	65.50	65.50	NA	NA	59.00	58.19	58.25	NA	NA	NA	54.00	51.67	58.87
2009-2010	50.33	50.00	NA	44.50	44.00	40.75	40.75	NA	NA	NA	NA	37.50	43.98
2010-2011	NA	40.00	40.00	40.00	40.00	40.25	40.50	NA	NA	NA	NA	NA	40.13
2011-2012	NA	NA	NA	NA									
LARGE LIMA - California													
2007-2008	62.50	62.50	62.50	62.50	62.63	63.50	64.88	65.40	NA	75.00	75.00	NA	65.64
2008-2009	NA	NA	75.00	74.17	73.50	73.44	73.30	73.00	73.06	73.00	73.00	72.38	73.39
2009-2010	72.17	72.50	72.13	73.00	72.19	70.81	70.38	NA	NA	69.50	NA	NA	71.59
2010-2011	NA	NA	61.00	61.00	60.25	59.00	59.00	59.00	59.00	59.00	59.00	59.00	59.53
2011-2012	NA	NA	NA	NA									
BLACKEYE - California													
2007-2008	40.50	40.50	40.00	40.33	40.50	40.63	40.13	43.50	NA	44.50	44.50	NA	41.51
2008-2009	NA	NA	NA	NA	51.50	51.25	51.50	NA	53.25	NA	NA	52.33	51.97
2009-2010	53.50	NA	42.50	43.50	43.33	43.75	43.75	NA	NA	NA	NA	45.50	45.12
2010-2011	NA	41.00	41.30	43.00	43.00	43.00	43.00	43.00	NA	NA	NA	NA	42.47
2011-2012	NA	NA	NA	NA									
GARBANZO - California													
2008-2009	NA	50.00	NA	NA	NA	NA	NA	NA	NA	46.00	NA	NA	48.00
2009-2010	NA	NA	NA	NA	NA	NA	NA	NA	NA	NA	46.00	NA	46.00
2010-2011	NA	NA	NA	NA	NA	NA	NA	NA	NA	NA	NA	NA	NA
2010-2011	NA	NA	NA	NA	NA	NA	NA	NA	NA	NA	NA	NA	NA
2010-2011	NA	NA	NA	NA									NA

NA=Not Available
W=Withdrawn

Grower Monthly Average Price Per Cwt By Crop Year Fob

	SEP	OCT	NOV	DEC	JAN	FEB	MAR	APR	MAY	JUN	JUL	AUG	AVG
BABY LIMA - California													
2007-2008	40.00	40.00	40.00	40.00	40.00	40.75	41.50	NA	NA	NA	NA	NA	40.32
2008-2009	NA	60.50	55.00	NA	55.00	55.25	54.75	53.00	53.00	NA	49.83	49.00	53.93
2009-2010	49.00	44.50	43.50	42.50	40.50	39.00	39.17	NA	35.00	35.13	34.50	35.13	39.81
2010-2011	36.17	36.75	37.20	37.50	37.50	38.00	39.60	40.00	40.67	43.00	NA	NA	38.64
2011-2012	NA	NA	51.13	52.67									51.90
LARGE LIMA US No 1- California													
2007-2008	60.00	60.00	60.13	60.00	60.00	61.25	62.50	NA	NA	NA	NA	NA	60.55
2008-2009	NA	70.00	70.00	70.00	70.00	70.00	70.00	70.00	70.00	NA	70.00	70.00	70.00
2009-2010	70.00	72.63	70.00	70.00	69.25	68.00	68.00	NA	NA	69.50	NA	NA	69.67
2010-2011	NA	61.00	61.00	56.50	55.38	55.38	55.00	55.00	55.00	55.00	54.50	55.17	56.27
2011-2012	NA	NA	NA	55.00									55.00
LARGE LIMA Canner Quality - California													
2007-2008	NA	NA	NA	NA	NA	NA	NA	NA	NA	NA	NA	NA	NA
2008-2009	NA	NA	NA	NA	NA	NA	NA	NA	NA	NA	NA	NA	NA
2009-2010	NA	NA	NA	NA	NA	NA	NA	NA	NA	NA	NA	NA	NA
2010-2011	NA	NA	84.00	84.00	84.00	84.00	84.00	84.00	NA	NA	NA	NA	84.00
2011-2012	NA	NA	84.00	84.00									84.00
BLACKEYE - California													
2007-2008	38.50	38.50	38.50	38.50	38.50	38.50	38.50	NA	NA	NA	NA	NA	38.50
2008-2009	NA	45.00	45.00	45.00	45.00	45.00	NA	NA	NA	NA	NA	NA	45.00
2009-2010	NA	39.00	39.00	39.00	39.00	39.00	39.25	NA	NA	NA	NA	NA	39.04
2010-2011	NA	38.75	39.00	39.25	39.63	39.75	40.00	40.00	NA	NA	NA	NA	39.48
2011-2012	NA	NA	64.00	64.00									64.00
GARBANZO - California													
2008-2009	44.63	45.00	NA	NA	NA	NA	NA	NA	NA	40.00	NA	NA	43.21
2009-2010	NA	NA	NA	NA	NA	NA	NA	NA	NA				NA
2008-2009	44.63	45.00	NA	NA	NA	NA	NA	NA	NA	40.00	NA	NA	43.21
2009-2010	NA	NA	NA	NA	NA	NA	NA	NA	NA	NA	NA	45.00	45.00
2011-2012	43.50	NA	NA	NA									43.50

NA=Not Available

W=Withdrawn

Dry Edible Beans, U.S. Production by Commercial Class (1,000 Cwt.)

Class	2011	2010	2009	2008	2007	5 Year Average
Pea Bean, (Navy)	3,245	4,766	3,332	4,542	3,832	3,943
Great Northern	1,202	1,403	999	1,598	1,186	1,278
Small White	29	71	71	0	10	36
Pinto	5,911	13,814	10,914	10,257	11,778	10,535
Dark Red Kidney	780	833	850	992	663	824
Light Red Kidney	628	966	967	1,023	813	879
Pink	408	586	497	557	578	525
Small Red	738	478	703	816	535	654
Cranberry	59	66	84	141	124	95
Black	2,994	4,661	3,010	2,923	2,803	3,278
Large Lima	209	399	333	317	302	312
Baby Lima	256	304	352	239	377	306
Blackeye	346	585	771	394	497	519
Garbanzo	2,031	1,939	1,444	1,118	1,515	1,609
Other	893	930	1,033	641	571	814
Total	19,729	31,801	25,360	25,558	25,584	25,606

Source: USDA, NASS. *Subject to revision.

USDA/KCCC Purchases of Dry Edible Beans, Peas, & Lentils Under PL480 Program for Export Distribution (MT)

CLASS	FY11	FY10	FY09	FY08	FY07	FY06
PEA BEAN	0	0	0	7,790	6,570	760
PINTO	25,580	25,580	37,900	33,660	24,700	10,840
GREAT NORTHERN	1,320	1,320	750	420	530	920
SMALL RED	1,280	1,280	370	1,210	2,950	2,080
BLACK	2,980	2,980	500	520	3,900	1,930
LIGHT RED KIDNEY	70	70	3,040	0	1,150	350
DARK RED KIDNEY	0	0	0	1,010	3,140	3,140
PINK	0	0	0	810	1,190	0
GARBANZO	180	180	1,260	3,660	1,410	0
LENTIL	27,450	27,450	39,180	74,870	49,310	49,310
GREEN PEA	8,630	8,630	14,110	15,150	15,850	17,140
SPLIT GREEN PEAS	0	0	9,860	9,450	4,010	4,870
YELLOW PEA	9,560	9,560	26,090	31,740	17,370	44,080
SPLIT YELLOW PEAS	92,190	92,190	100,940	71,690	66,990	25,040
TOTAL	169,240	169,240	234,000	251,980	199,070	160,460

Source: USDA Kansas City Commodities Corporation

Dry Edible Beans, Production by Commercial Class 2007-2011 (1,000 cwt)

SMALL RED					
State	2011	2010	2009	2008	2007
ID	207	219	176	215	104
MI	351	173	404	425	253
MN	24	20	23	29	29
ND	30	17	35	85	74
WA	126	49	65	62	75
Total	738	478	703	816	535

PINK					
State	2011	2010	2009	2008	2007
ID	174	221	170	140	146
MN	75	93	104	143	134
ND	159	158	150	211	234
OR	0	9	0	0	11
WA	0	105	73	63	53
Total	408	586	497	557	578

BLACK					
State	2011	2010	2009	2008	2007
CA	0	12	0	0	8
ID	57	109	69	38	46
MI	1602	2304	1770	1691	1540
MN	338	420	288	201	378
NE	42	123	79	69	0
ND	775	1450	610	731	652
NY	70	126	97	133	114
OR	32	29	31	14	12
WA	78	88	66	46	53
Total	2994	4661	3010	2923	2803

SMALL WHITE					
State	2011	2010	2009	2008	2007
ID	0	9	13	0	10
OR	29	25	23	0	0
WA	0	37	35	0	0
Total	29	71	71	0	10

CRANBERRY					
State	2011	2010	2009	2008	2007
CA	8	0	18	21	18
ID	0	9	11	12	18
MI	51	57	55	108	88
Total	59	66	84	141	124

BLACK EYE					
State	2011	2010	2009	2008	2007
AZ	25	39	52	0	0
CA	201	331	324	125	269
TX	120	215	395	269	228
Total	346	585	771	394	497

GREAT NORTHERN					
State	2011	2010	2009	2008	2007
ID	65	91	94	59	49
NE	1046	1186	779	1369	991
ND	12	81	113	110	113
WY	79	45	13	60	33
Total	1202	1403	999	1598	1186

GARBANZO					
State	2011	2010	2009	2008	2007
CA	206	271	284	116	114
ID	775	658	415	362	432
MT	143	84	18	17	86
ND	44	250	194	119	248
OR	12	7	6	9	51
SD	49	58	27	29	44
WA	802	611	500	466	540
Total	2031	1939	1444	1118	1515

PEA BEAN (NAVY)					
State	2011	2010	2009	2008	2007
ID	101	133	84	79	88
MI	1040	1290	976	1162	990
MN	869	1240	906	1124	999
NE	20	19	0	0	0
ND	1142	1958	1263	2087	1636
SD	50	71	86	69	86
WA	14	38	0	0	0
WY	9	17	17	21	20
Total	3245	4766	3332	4542	3819

BABY LIMAS					
State	2011	2010	2009	2008	2007
CA	256	304	352	239	377
Total	256	304	352	239	377

LARGE LIMA					
State	2011	2010	2009	2008	2007
CA	209	399	400	317	302
Total	209	399	400	317	302

Source: USDA, NASS Crop Production Report - 2011

Dry Edible Beans, Production by Commercial Class 2007-2011 (1000 cwt)

ALL RED KIDNEY*					
State	2011	2010	2009	2008	2007
CA	36	32	51	34	27
CO	60	103	202	133	143
ID	34	82	73	62	46
MI	164	185	161	146	117
MN	720	909	870	984	676
NE	152	179	226	297	243
ND	31	33	31	39	22
NY	57	111	70	161	120
OR	15	18	28	27	8
WA	14	0	0	25	0
WI	110	133	127	136	92
Total	1,393	1,785	1,839	2,044	1,494

LIGHT RED KIDNEY					
State	2011	2010	2009	2008	2007
CA	20	20	42	26	22
CO	60	103	160	116	127
ID	14	37	51	33	28
MI	137	153	139	117	99
MN	176	355	277	274	199
NE	152	179	226	297	243
NY	39	96	51	141	95
OR	15	9	21	19	0
WA	15	14	0	0	0
Total	628	966	967	1,023	813

DARK RED KIDNEY					
State	2011	2010	2009	2008	2007
CA	16	12	9	8	5
ID	20	45	42	17	16
MI	27	32	22	29	18
MN	544	554	593	710	477
ND	31	33	31	39	22
NY	18	15	19	20	25
OR	0	9	7	8	8
WA	14	0	0	25	0
WI	110	133	127	136	92
Total	780	833	850	992	663

PINTO					
State	2011	2010	2009	2008	2007
AZ	51	106	140	0	0
CO	432	1,034	628	496	562
ID	425	958	783	465	620
KS	108	229	210	105	138
MI	52	78	63	32	58
MN	202	309	270	274	367
MT	122	275	224	174	192
NE	787	1,650	1,305	1,075	1,132
NM	279	322	275	196	175
ND	2,683	7,534	6,106	6,660	7,760
OR	0	28	19	15	10
SD	0	62	62	40	49
UT	0	0	0	7	5
WA	182	330	260	160	230
WY	588	899	569	558	480
Total	5,911	13,814	10,914	10,257	11,778

OTHER					
State	2011	2010	2009	2008	2007
AZ	72	98	130	0	0
CA	74	113	146	108	97
CO	84	117	60	48	47
ID	42	57	72	42	45
KS	6	5	14	11	0
MI	100	143	81	43	74
MN	53	71	59	73	27
MT	21	0	0	0	0
NE	53	36	72	75	52
NM	0	0	0	18	6
NY	25	27	14	11	17
ND	12	10	36	25	29
OR	66	33	40	29	44
SD	60	39	57	15	27
TX	10	14	30	14	15
WA	99	104	141	63	69
WY	116	63	81	66	22
Total	893	930	1,033	641	571

TOTAL					
State	2011	2010	2009	2008	2007
AZ	243	243	322	0	0
CA	1,386	1,386	1,508	960	1,212
CO	1,122	1,122	848	660	736
ID	2,479	2,479	1,980	1,462	1,602
KS	225	225	224	116	138
MI	4,212	4,212	3,510	3,607	3,120
MN	3,062	3,062	2,520	2,828	2,610
MT	371	371	242	191	278
NE	3,107	3,107	2,461	2,885	2,418
NM	299	299	275	214	181
NY	292	292	193	324	248
ND	11,399	11,399	8,526	10,048	10,773
OR	149	149	147	94	149
SD	228	228	232	153	206
TX	241	241	425	283	243
UT	0	0	0	7	5
WA	1,360	1,360	1,140	885	1,020
WI	123	123	127	136	92
WY	997	997	680	705	555
Total	31,295	31,295	25,360	25,558	25,586

Source: USDA, NASS Crop Production Report - 2011

USDA Dry Pea and Lentil Production Data 2007-2011

LENTIL																				
STATE	Area Planted					Area Harvested					Yield					Production				
	(1,000 Acres)					(1,000 Acres)					(Pounds)					(1,000 Cwt.)				
	2011	2010	2009	2008	2007	2011	2010	2009	2008	2007	2011	2010	2009	2008	2007	2011	2010	2009	2008	2007
Idaho	28	55	53	38	38	27	54	52	37	37	1,300	950	1,250	951	1,151	351	513	650	352	426
Montana	260	260	122	83	87	270	247	116	79	85	1,000	1,360	1,380	770	1,151	2,700	3,359	1,601	608	978
North Dakota	80	265	165	95	110	77	255	164	90	106	1,070	1,540	1,560	920	1,360	824	3,927	2,558	828	1,442
Washington	60	78	75	55	68	60	78	75	55	67	1,400	1,100	1,400	1,100	1,200	840	858	1,050	605	804
United States	428	658	415	271	303	434	634	407	261	295	1,086	1,365	1,440	917	1,237	4,715	8,657	5,859	2,393	3,650

DRY EDIBLE PEA																				
STATE	Area Planted					Area Harvested					Yield					Production				
	(1,000 Acres)					(1,000 Acres)					(Pounds)					(1,000 Cwt.)				
	2011	2010	2009	2008	2007	2011	2010	2009	2008	2007	2011	2010	2009	2008	2007	2011	2010	2009	2008	2007
Idaho	16	31	42	37	25	15	30	41	36	24	1,800	1,600	1,900	1,500	1,700	270	480	779	540	408
Montana	190	220	240	245	235	180	207	226	231	217	1,300	2,000	1,330	1,080	1,700	2340	4140	3006	2495	3689
North Dakota	85	430	490	520	515	80	400	480	500	500	1,450	2,030	2,400	1,580	2,170	1160	8120	11520	7900	10850
Oregon	5.0	7.0	6.3	5.5	5.5	4.8	6.4	5.9	5.3	4.3	3,188	2,953	2,237	2,547	2,000	153	189	132	135	86
Washington	70	68	85	75	67	70	68	85	75	66	2,100	1,900	2,000	1,600	1,900	1470	1292	1700	1200	1254
United States	366	756	863	883	848	350	711	838	847	811	1,542	1,999	2,045	1,448	2,008	5393	14221	17137	12270	16287

AUSTRIAN WINTER PEA																				
STATE	Area Planted					Area Harvested					Yield					Production				
	(1,000 Acres)					(1,000 Acres)					(Pounds)					(1,000 Cwt.)				
	2011	2010	2009	2008	2007	2011	2010	2009	2008	2007	2011	2010	2009	2008	2007	2011	2010	2009	2008	2007
Idaho	6.0	11.0	8.0	5.0	6.0	5.0	9.0	6.0	4.0	5.0	1,700	1,100	1,600	1,400	1,300	85	99	96	56	65
Montana	10.0	16.0	10.0	10.0	20.0	5.0	7.0	6.0	3.0	4.0	1,900	1,571	933	967	900	95	110	56	29	36
Oregon	2.0	4.2	2.5	2.5	3.0	1.1	1.9	1.7	1.0	1.0	1,727	1,474	1,765	1,900	1,700	19	28	30	19	17
United States	18.0	31.2	20.5	17.5	29.0	11.1	17.9	13.7	8.0	10.0	1,793	1,324	1,328	1,300	1,180	199.0	237.0	182.0	104.0	118.0

WRINKLED SEED PEA						
STATE	Production (1,000 cwt)					
	2011	2010	2009	2008	2007	2006
Idaho	135	190	180	160	135	80
Washington	374	390	694	420	406	510
United States	509	580	874	580	541	590

* TBA - To Be Announced

Source: Agricultural Statistics Board, NASS, USDA

Dry Pea and Lentil Production Data 2002-2011*

REGULAR GREEN			
Year	Acreage	Avg lbs.	Production lbs.
2011	156,594	1,850	289,740,598
2010	332,188	1,783	592,445,370
2009	378,118	2,308	872,660,790
2008	308,429	1,475	454,848,250
2007	331,247	1,798	595,666,181
2006	382,406	1,542	589,801,822
2005	391,664	1,676	656,522,845
2004	276,456	2,467	682,052,193
2003	232,007	1,590	368,843,629
2002	179,014	1,608	287,940,114
10 Yr Avg	296,812	1,810	539,052,179

YELLOW PEA			
Year	Acreage	Avg lbs.	Production lbs.
2011	190,650	1,645	313,662,500
2010	382,032	2,161	825,504,900
2009	420,070	2,397	1,006,778,310
2008	528,089	1,285	678,631,812
2007	548,600	1,955	1,072,502,616
2006	581,134	1,434	833,541,060
2005	403,762	1,945	785,322,022
2004	226,383	1,706	386,248,087
2003	72,580	1,790	129,912,434
2002	114,325	1,452	166,010,666
10 Yr Avg	346,763	1,777	619,811,441

SMALL LENTILS			
Year	Acreage	Avg lbs.	Production lbs.
2011	78078	1175	91,758,738
2010	114844	1326	152,226,606
2009	103587	1475	152,758,800
2008	72,756	1,094	79,603,188
2007	91168	1229	112,047,206
2006	104,986	950	99,737,766
2005	68,808	958	65,939,078
2004	72,702	1,037	75,364,122
2003	158,983	1,115	177,343,425
2002	146,263	1,155	168,924,643
10 Yr Avg	101,218	1,151	117,570,357

LARGE CHICKPEA			
Year	Acreage	Avg lbs.	Production lbs.
2011	86,898	1,571	136,530,548
2010	100,297	1,372	137,628,763
2009	64,320	1,405	90,390,205
2008	65,327	1,396	91,196,956
2007	115,997	983	114,002,016
2006	112,751	1,048	118,211,146
2005	85,738	982	84,194,649
2004	20,198	1,277	25,787,441
2003	28,546	953	27,209,441
2002	67,664	866	58,583,988
10 Yr Avg	74,774	1,185	88,373,515

AUSTRIAN WINTER PEA			
Year	Acreage	Avg lbs.	Production lbs.
2011	11,550	1,764	20,368,500
2010	18,100	1,313	23,760,000
2009	7,750	1,812	14,041,675
2008	11,504	1,271	14,621,871
2007	25,220	1,253	31,606,527
5 Yr Avg	14,825	1,483	20,879,715

MEDIUM LENTILS			
Year	Acreage	Avg lbs.	Production lbs.
2011	298,601	1,157	345,419,563
2010	368,954	1,517	559,687,258
2009	196,394	1,534	301,242,150
2008	143,047	986	140,979,638
2007	186,635	1,293	241,381,853
2006	295,209	1,174	346,914,397
2005	303,043	1,267	384,090,129
2004	259,598	1,191	309,240,698
2003	76,671	861	65,996,436
2002	54,280	991	53,795,357
10 Yr Avg	218,243	1,197	274,874,748

SMALL CHICKPEAS			
Year	Acreage	Avg lbs.	Production lbs.
2011	30,152	1,544	46,549,303
2010	24,860	1,352	33,600,992
2009	17,313	1,416	24,514,000
2008	8,398	1,730	14,526,035
2007	15065	1110	16726000
5 Yr Avg	19,158	1,430	27,183,266

LARGE LENTILS			
Year	Acreage	Avg lbs.	Production lbs.
2011	6,350	1,187	7,537,500
2010	28,900	1,416	40,921,250
2009	30,799	1,396	43,008,900
2008	32,322	822	26,557,024
2007	35,298	1,319	46,567,997
5 Yr Avg	26,734	1,228	32,918,534

RED LENTILS			
Year	Acreage	Avg lbs.	Production lbs.
2011	42,864	1,133	48,581,408
2010	81,725	1,473	120,384,793
2009	37,660	1,472	55,424,400
2008	25,840	822	23,171,053
4 Yr Avg	47,022	1,225	61,890,414

Source: USA Dry Pea and Lentil Council, * - Figures include US dry pea and lentil figures as reported by member processors, the Farm Service Agency, and the National Agricultural Statistics Service

BEANS, DRY: U.S. EXPORTS BY COUNTRY OF DESTINATION

October 2010-September 2011 (Data in Metric Tons)

(Data in Metric Tons)

COUNTRY	NAVY OR PEA	GREAT NORTHERN	LARGE LIMA	BABY LIMA	LT. RED KIDNEY	DK. RED KIDNEY	OTHER KIDNEY	PINTO BEANS	BLACK BEANS	BEANS NESOI	LEGUME SEED	SMALL REDS	TOTAL BEANS
NORTH AMERICA	22868	721	435	294	4601	2149	7632	51247	99608	11445	19468	3963	224431
Bahamas, The	2		2				3		3	79	18		107
Barbados					8					13	4		25
Bermuda					11					1			12
Canada	19387		299		850	942	3041			9187	8421	2030	44156
Cayman Isl.												4	4
Costa Rica					21			67		5	686	439	1218
Cuba									11502				11502
Dominican Republic		279	12		40			32201	290	298			33121
El Salvador									311	3	1		314
French W. Indies				237	1770					20	32		2059
Guatemala				57	39	598		3727	1866	101	194		6582
Haiti							127	4533	663	21	6	373	5723
Honduras	39								1	1	466		508
Jamaica & Dep.	103		110		517	38	102	20		136	995	972	2994
Leeward-Windward					16	29	15			175	43		277
Mexico	3337	441			441	492	4340	9455	84919	1313	8595	145	113037
Netherlands-Antilles			13		113	9		15	46	81			603
Nicaragua					776	42	5	1178		10	9		1295
Panama								51	6				895
SOUTH AMERICA				396	352	11	164	1153	54	175	1136	80	3521
Argentina										22	211		233
Brazil											288		288
Chile								158	17		150		325
Colombia				218	19	9	14	875	32		216		1384
Ecuador								120				80	200
French Guiana				155			22				81		258
Guyana						2	57						59
Peru					160						114		274
Surinam							63			64	15		142
Trinidad-Tobago				13	174		7		5	69			268
Uruguay											6		6
Venezuela				10						20	56		86
EUROPE	52347	7432	697	67	487	7745	104	1790	943	1829	8012	83	81447
Austria		49					40						89
Belgium & Lux.	64	1801		9		1700		20		41	209		3843
Cyprus										54	86		140
Denmark		3				50		18		48	70		189
France	70	4415	20		21	1244	21	295		13	838		6937
Germany	107				5	812		41	7	145	190	59	1366
Greece						200					137		336
Italy	12622	201	46	58	171	3255		91		730	1357	20	18550
Netherlands		366	26		101	42		104	6	13	4817		5475
Norway			24		188	35			18	369			634
Poland						21							21
Portugal		110	20					1197			20		1348
Russia		425	18										443
Slovenia							20						20
Spain	716					83		22		88	84		991
Sweden												4	4
United Kingdom	38769	63	543			305	24	2	912	329	206		41151
Yugoslavia													

BEANS, DRY: U.S. EXPORTS BY COUNTRY OF DESTINATION

October 2010-September 2011 (Data in Metric Tons)

(Data in Metric Tons)

COUNTRY	NAVY OR	GREAT	LARGE	BABY	LT. RED	DK. RED	OTHER	PINTO	BLACK	BEANS	LEGUME	SMALL	TOTAL
	PEA	NORTHERN	LIMA	LIMA	KIDNEY	KIDNEY	KIDNEY	BEANS	BEANS	NESOI	SEED	REDS	BEANS
ASIA	810	3421	3020	6417	28	1045	343	1994	1107	5363	4834	764	29147
Bahrain										62			62
Bangladesh										159			159
China(Mainland)				109		40	4				41		194
Hong Kong	18	30		20	8		18	72	406	95			744
India					9					751			896
Israel		133			11					74			485
Japan	61	1298	3020	5472		641	299		133	1921	1656	522	15022
Jordan										103			351
Korea	526	20		167		197				394			1384
Kuwait								18	7	5		3	33
Laos									369				369
Lebanon										17	868		885
Malaysia		1126				87		36		122	127		1498
Oman											35		35
Pakistan									2	465	66		533
Philippines		816							37	3			856
Qatar								4				1	5
Saudi Arabia											263		263
Singapore								36		19	58		113
Sri Lanka											96		96
Syria											309		309
Taiwan				650					120	208	162	242	1382
Thailand							20			549	72		641
Turkey						81		42		65	243		431
United Arab Emirates							2	56	33	352	26		467
Yemen	205							1730					1935
OCEANIA	5688	577	115	65	25	151	81	104	107	2260	3175	31	12378
Australia		558	97	65	25	110	81	104	107	2033	2732		5911
French Pacific Is.										165	7	31	203
New Zealand	5688	20	18			41				61	419		6247
Other Pacific Is.											17		17
AFRICA	1724	970	617	14	21	60	2	18468		190	903		22968
Algeria	1419	970									133		2522
Angola								9070					9070
Cameroon											87		87
Congo (Brazzaville)								1042					1042
Egypt							2	1130			10		1142
Gabon				14									14
Ghana								2					2
Kenya											112		112
Liberia	188					60							248
Malawi								948					948
Mauritius			617							100	86		802
Morocco										65			65
Rwanda								2560					2560
So. Africa, Rep of	117				21					25	438		601
Tanzania											37		37
Togo								1100					1100
Zimbabwe								2617					2617
Others										7	25		32
Total	27808	13121	4884	8252	5517	11160	8202	81637	101866	22744	37470	4922	327582

Source: Foreign Agricultural Service, Compiled by USDA Market News

Note: Bean, NESOI (Not Elsewhere Specified Or Indicated) includes Beans NESOI, Broad Beans, White, Pink, Cranberry, and Mung Beans

Note: Countries not displayed had no activity or less than .5 MT.

PEAS, DRY: U.S. EXPORTS BY COUNTRY OF DESTINATION

October 2010-September 2011 (Data in Metric Tons)

COUNTRY	LENTILS	YELLOW PEAS	GREEN PEAS	SPLIT PEAS	PEAS NESOI	AUSTRIAN WINTER	BLACK EYE	GARBONZO BEANS	SEED PEAS	TOTAL PEAS
NORTH AMERICA	37643	3094	10286	2422	8972		431	7356	15024	
Bahamas, The					2			1		3
Barbados	133	7	11	195	20		68	20		453
Belize							283			283
Bermuda			8						2	10
Canada	26748	2599	9203	1204	4975			6798	7237	2652
Costa Rica	11		72	8				117	10	218
Dominican Republic	261	20	66					66		414
El Salvador								163		163
French W.Indies	1226									1226
Guatemala	127		45						525	697
Haiti	1522	440	52		1746					3760
Honduras	803							2	25	830
Jamaica & Dep.	6	18	12		28			6		70
Leeward-Windward Islands	64		3		505					572
Mexico	6520	10	816	985	1696			128	7216	17371
Netherlands-Antilles	30			30			81	13		153
Nicaragua									9	9
Panama	190							42		233
SOUTH AMERICA	23487	841	5436	8711	945		15	4202	1587	45224
Argentina									155	155
Brazil									53	53
Chile	270		24						495	788
Colombia	7812	841	3484		433			2989		15558
Ecuador	451								167	619
French Guiana	164									164
Guyana			2							2
Peru	14581		1624	8480	512			957	676	26830
Trinidad-Tobago	138			231			15	254		638
Uruguay									41	41
Venezuela	71		303					3		376
EUROPE	48708	185	3758	1719	1218		342	23553	5535	85017
Belgium & Lux.	3430							409		3838
Bulgaria	765									765
Croatia					20					20
Cyprus	50		71		36					157
Czech Republic	346							39		384
Denmark					931					931
France	395								767	1161
Germany	5900	51	1515	24	33			441	552	8516
Greece	3587						54	22		3663
Italy	4619		22	94				5326	293	10353
Netherlands	1567		308	405	59		233	767	2744	6082
Norway			126					180		306
Poland	71		385		46					502
Portugal	391						54	131		576
Romania	65									65
Russia	1248	134	905	986				71		3343
Spain	26033		324	9	44			15417	73	41899
Sweden	28							16	479	523
United Kingdom	215		103	200	49			737	629	1932
OCEANIA	1259		195	87	87			703	315	2645
Australia	143		54	87	83				4	370
French Pacific Is.	1115		3							1118
New Zealand					4			703	312	1019
Other Pacific Is.			139							139

PEAS, DRY: U.S. EXPORTS BY COUNTRY OF DESTINATION
October 2010-September 2011 (Data in Metric Tons)

COUNTRY	LENTILS	YELLOW PEAS	GREEN PEAS	SPLIT PEAS	PEAS NESOI	AUSTRIAN WINTER	BLACK EYE	GARBONZO	SEED PEAS	TOTAL PEAS
ASIA	62472	44843	82083	27468	43321	1234	785	18674	2701	
Afghanistan				4176	1195					5371
Bangladesh	901		44	1706						2651
Cambodia				758						758
China(Mainland)		20345	6909		4362			4173	71	35860
Hong Kong	96			82	4		33	297	206	718
India	22186	4629	47461		19685		267	6598		100827
Indonesia	947	7883	1746		908					11484
Israel	64		163	133	130			804	81	1374
Japan	407		50	10	68	150	6	823	621	2134
Jordan	42		24				52	1203	50	1370
Korea	193		2388	65	2063		58	83		4849
Lebanon	385		46					1272	115	1819
Malaysia			1318	70	200		93	44	15	1740
Nepal	628				937			36		1601
Pakistan	8598	7996	778	10213	4341			844		32770
Philippines		375	14975	161	5128	72		392	879	21982
Saudi Arabia	169		298					154	5	625
Singapore			24				32	1		57
Sri Lanka	3055	628	498	7648						11829
Syria									173	173
Taiwan	78	1706	1988	505	499	1012	32	221	194	6235
Thailand	22	82	431	144						678
Turkey	8502		1494	1296	1467			1462	291	14513
United Arab Emirates	16200		1426		2335		211	152		20324
Vietnam			23					93		116
Yemen		1200		501						1701
AFRICA	13038	27064	3972	211284	22940			2320	609	281226
Algeria	4138		476					2280	335	7229
Burkina Faso	413									413
Burundi		269		889						1158
Cameroon		830		4680						5510
Central Africa Rep.				470						470
Chad				866						866
Congo (Kinshasa)				1908						1908
Djibouti Afars-Issas		150		5562	10155					15867
Egypt	4951	5536	2761		786					14034
Ethiopia	1521	1120		169793	2292					174725
Cote D'Ivoire				60	160					220
Kenya		11148		12041	6468				232	29889
Liberia				1711	555					2266
Mali			132	488						620
Morocco									25	25
Mozambique				749						749
Niger	590	120			270					980
Senegal			270							270
Sierra Leone	180				546					726
Somalia				2369						2369
So. Africa, Rep of	45	3898	333	4015	75				18	8384
Sudan				999						999
Tanzania				2634						2634
Tunisia								39		39
Togo	1200			330	1635					3165
Uganda		2655		1070						3724
Zimbabwe		1338		650						1988
Total	185811	76007	105731	98872	77482	1234	1572	56807	25771	1140921

Source: Foreign Agricultural Service, Compiled by USDA Market News Note: Peas NESOI (Not Elsewhere Specified Or Indicated)
Note: Countries not displayed had no activity or less than .5 MT.

U.S. Exports, Dry Beans (cwt)

BEANS	Oct 10-Sep 11	Oct 09-Sep 10	Oct 08-Sep 09	Oct 07-Sep 08	Oct 06-Sep 07	Oct 05-Sep 06
PEA BEAN	612,880	1,674,833	1,685,881	1,087,696	1,101,713	1,081,877
GREAT NORTHERN	289,196	449,226	766,110	374,151	509,697	370,647
LIMA	289,524	233,375	318,125	351,340	402,494	251,851
KIDNEY	548,309	663,177	749,453	758,705	901,745	212,818
PINTO	1,799,273	3,023,304	1,961,304	1,959,643	2,763,904	1,314,047
BLACK	2,245,135	2,283,388	1,042,459	1,134,818	797,209	609,781
BEANS NESOI**	501,271	408,719	175,328	314,753	281,054	616,944
SEED	825,830	2,004,906	665,537	599,069	975,072	609,825
SMALL RED	108,490	86,238	74,350	97,880	170,744	149,431
TOTAL	7,219,907	7,438,548	7,438,548	6,678,054	7,903,632	5,217,221

Note: Bean, NESOI (Not Elsewhere Specified Or Indicated) includes Beans NESOI, Broad Beans, White, Pink, Cranberry, and Mung Beans

U.S. Exports, Dry Peas (cwt)

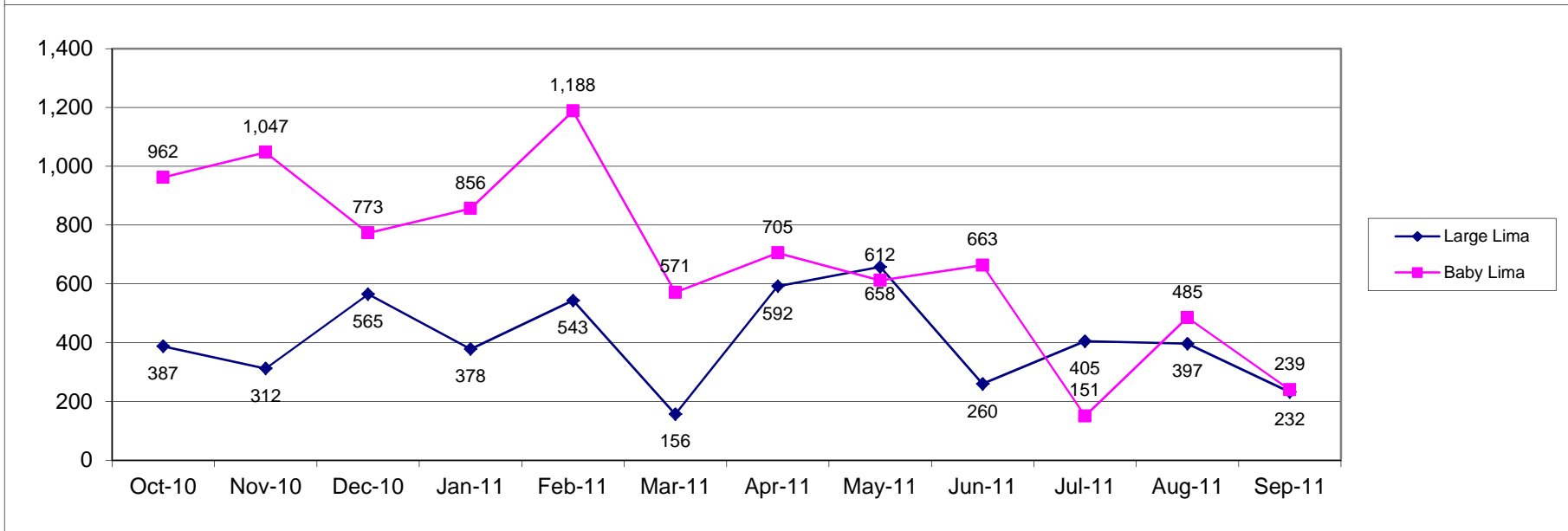
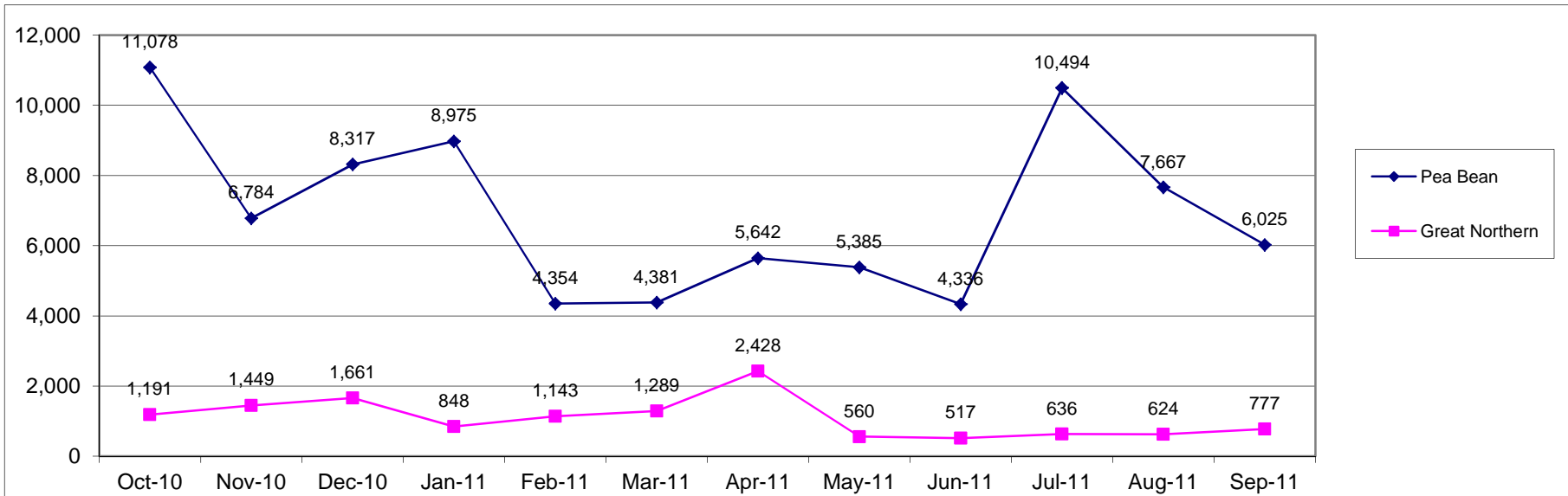
PEAS	Oct 10-Sep 11	Oct 09-Sep 10	Oct 08-Sep 09	Oct 07-Sep 08	Oct 06-Sep 07	Oct 05-Sep 06
LENTIL	4,095,263	2,747,130	2,715,835	2,424,907	3,392,044	2,424,907
YELLOW PEAS	1,675,196	4,281,246	4,541,540	1,690,821	2,922,195	1,690,821
GREEN PEAS	2,330,302	3,354,843	4,025,915	2,914,922	3,361,298	2,914,922
SPLIT PEAS	2,179,128	857,790	625,032	197,368	205,104	197,368
PEAS NESOI**	1,707,699	1,248,449	2,159,545	1,826,345	1,876,750	1,826,345
AUSTRIAN WINTER	27,204	6,744	30,680	11,064	40,510	11,064
BLACKEYE	34,642	20,021	21,092	55,387	31,760	55,387
GARBANZO	1,252,022	466,825	499,603	198,669	403,663	198,669
SEED	567,997	464,295	763,730	701,732	847,769	701,732
TOTAL	13,869,455	15,382,972	15,382,972	10,021,213	13,081,093	10,021,213

Note: Peas NESOI (Not Elsewhere Specified Or Indicated)

BEANS, DRY: U.S. EXPORTS BY MONTH

October 2010-September 2011

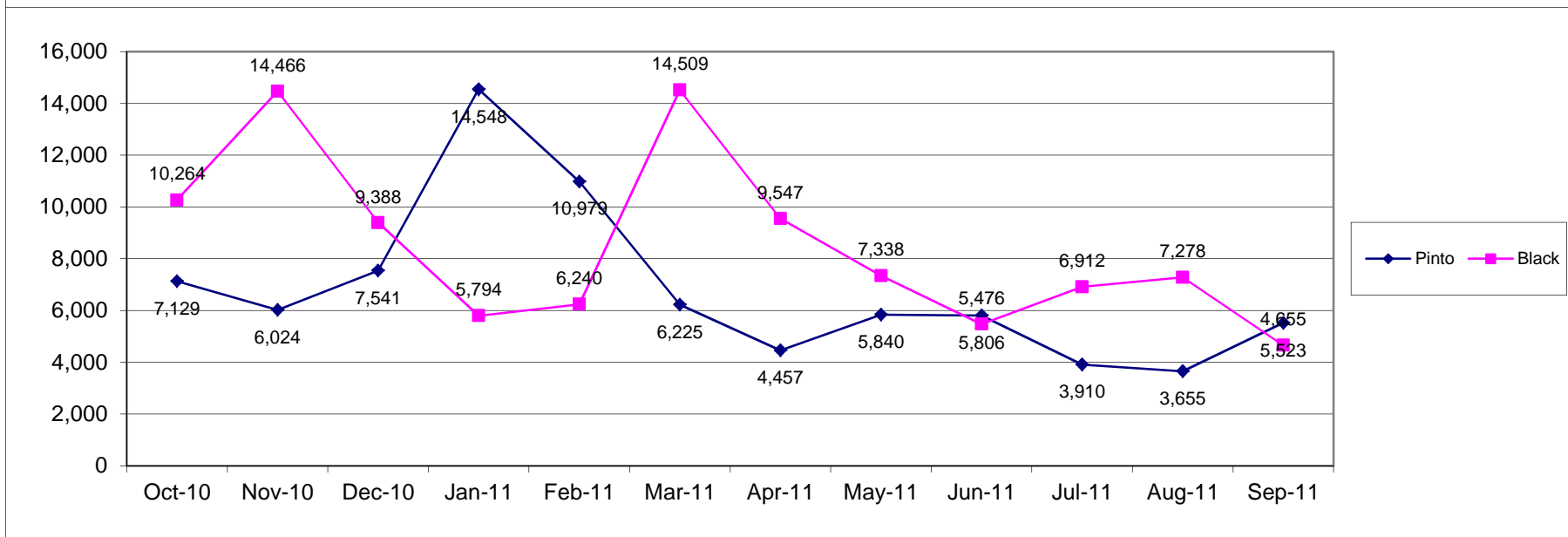
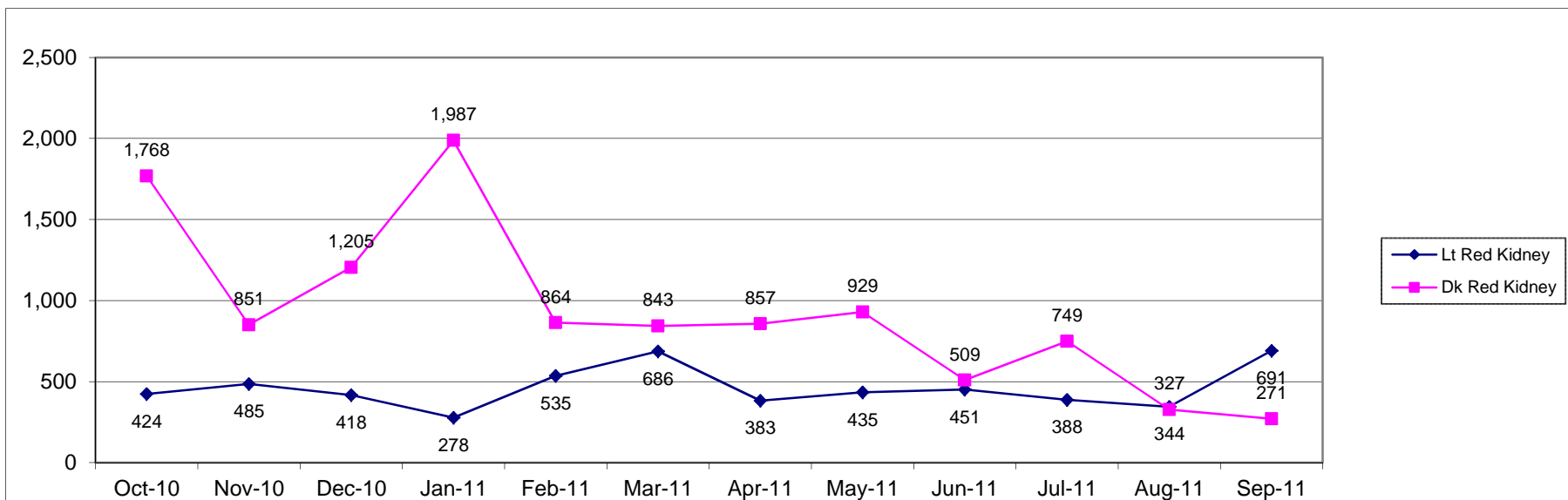
Data in Metric Tons



BEANS, DRY: U.S. EXPORTS BY MONTH

October 2010-September 2011

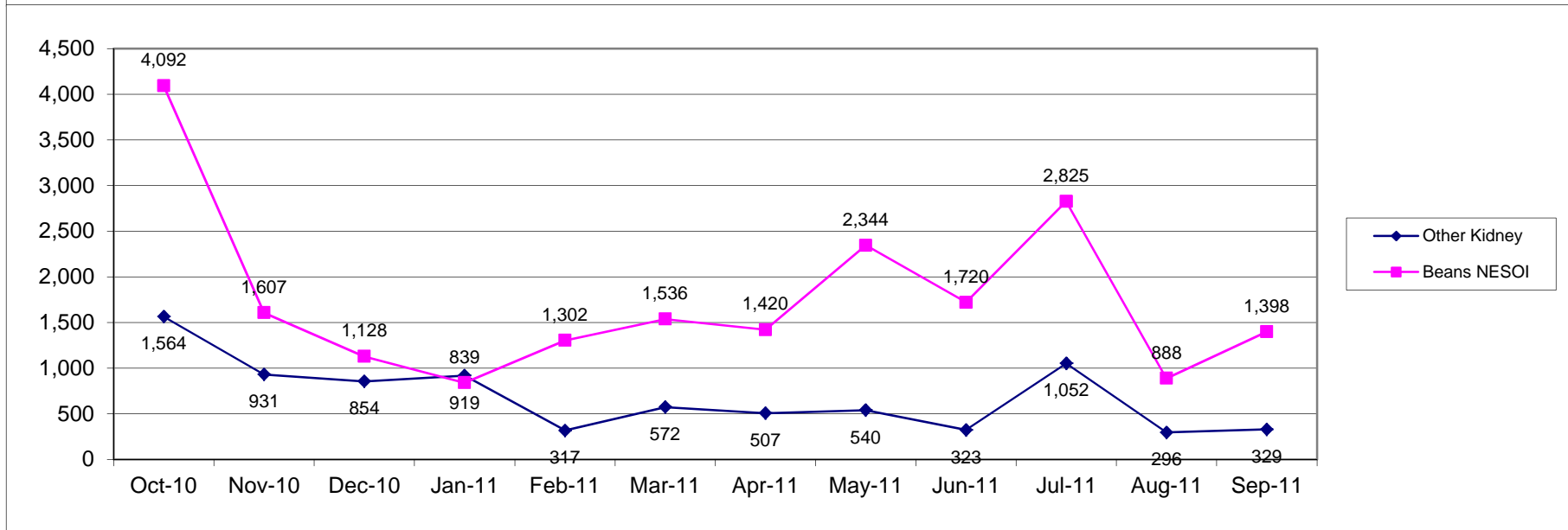
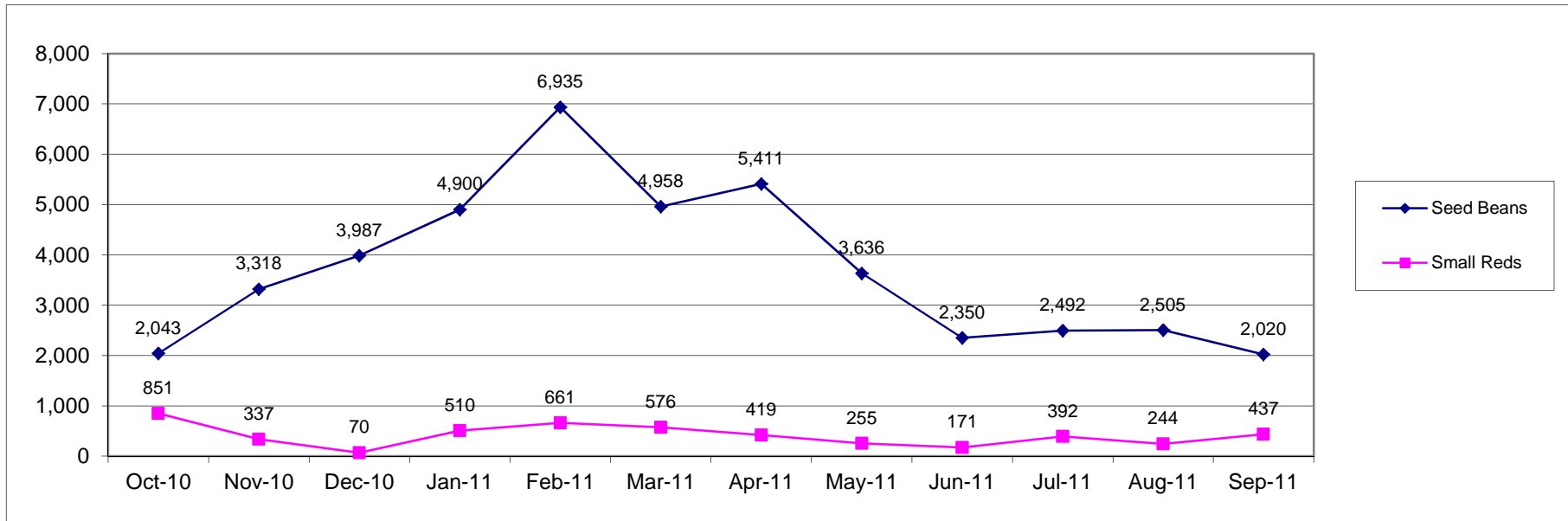
Data in Metric Tons



BEANS, DRY: U.S. EXPORTS BY MONTH

October 2010-September 2011

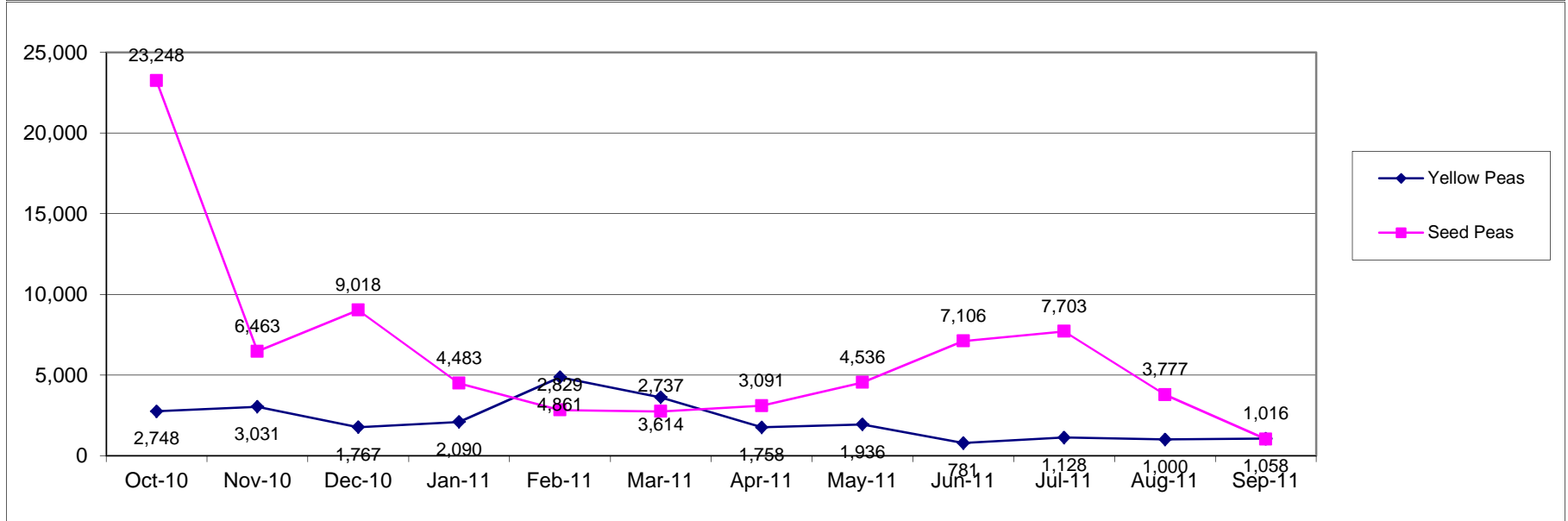
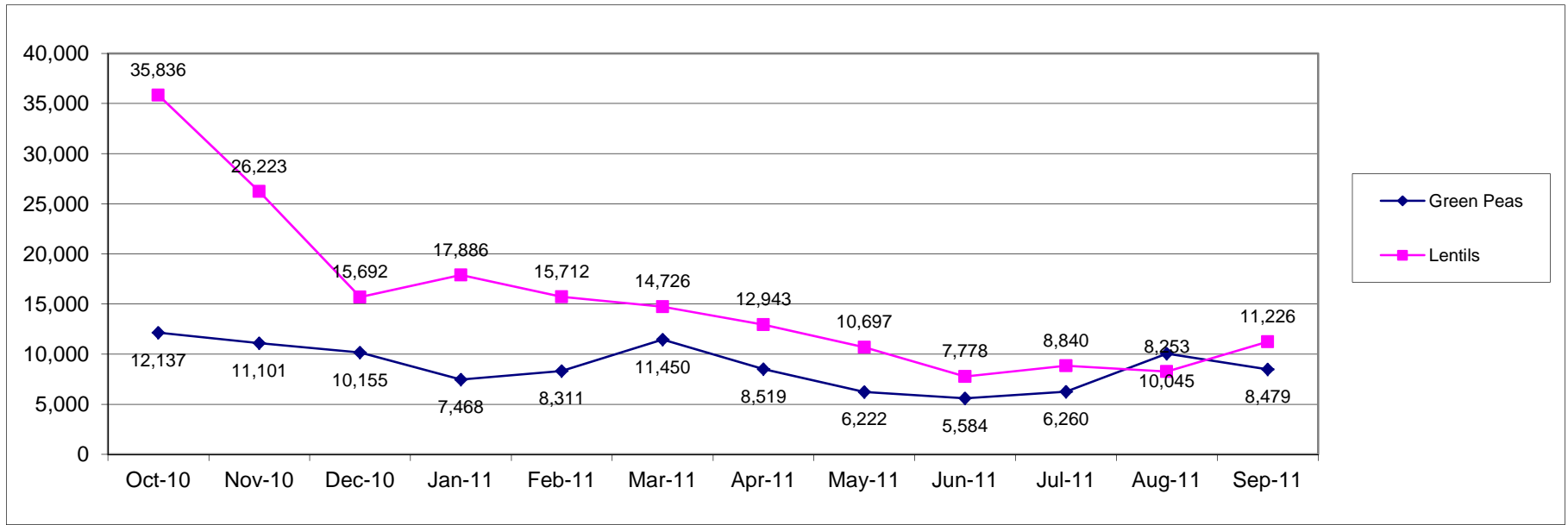
Data in Metric Tons



PEAS, DRY: U.S. EXPORTS BY MONTH

October 2010-September 2011

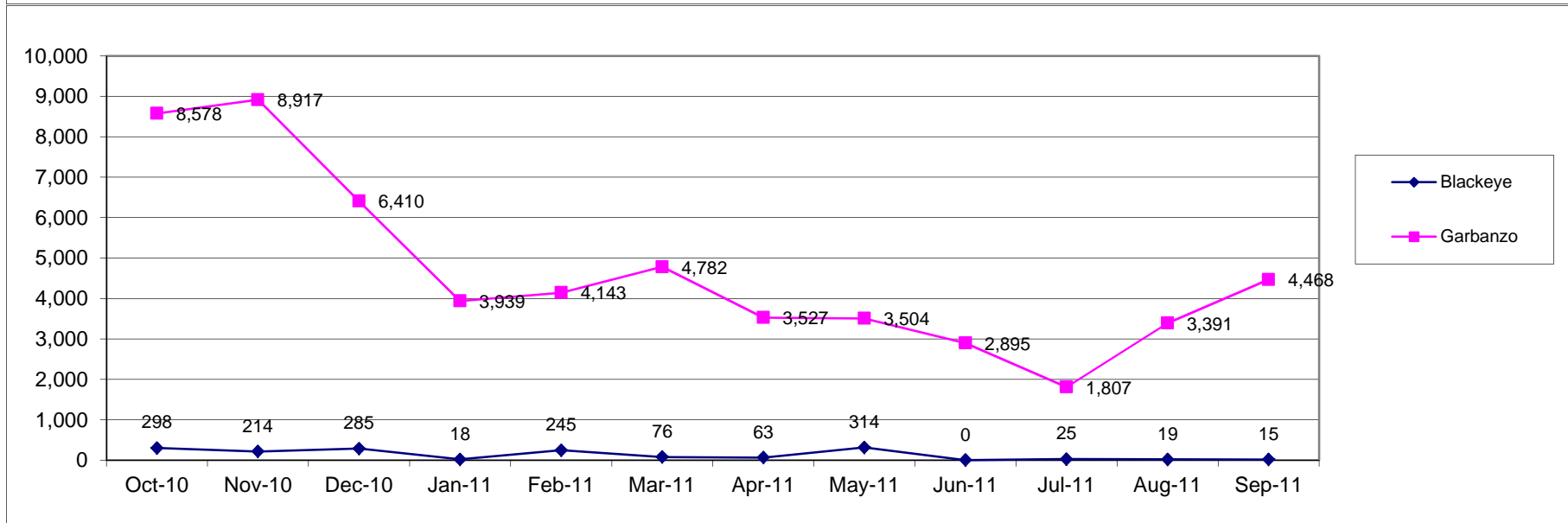
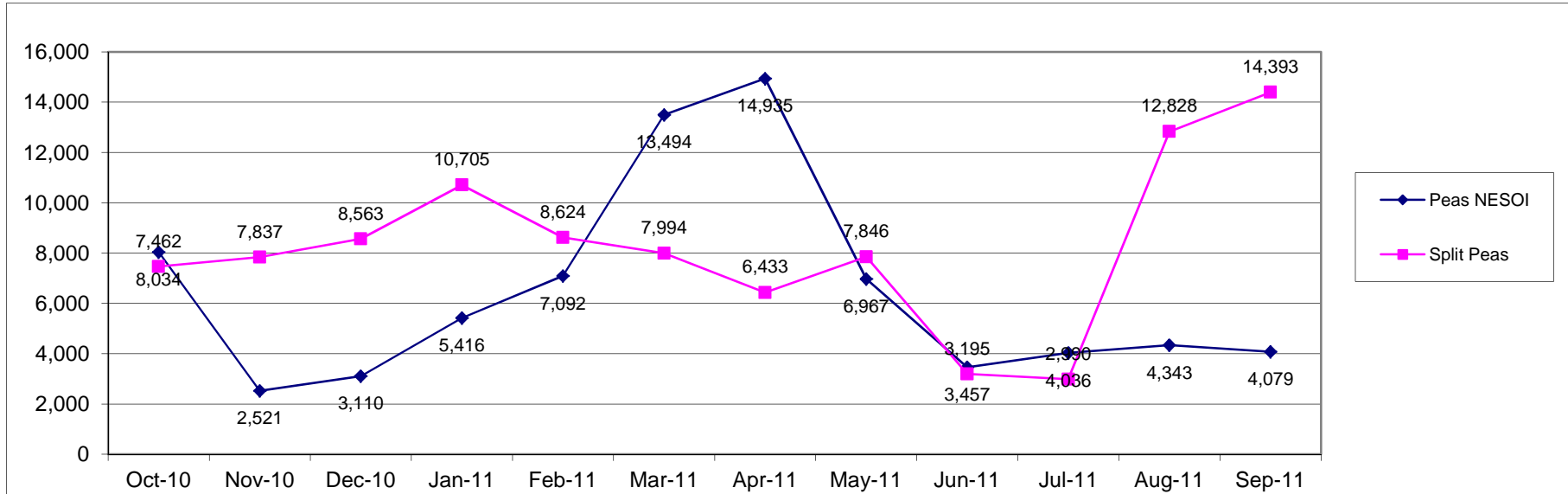
Data in Metric Tons



PEAS, DRY: U.S. EXPORTS BY MONTH

October 2010-September 2011

Data in Metric Tons



USDA Purchases of Canned or Frozen Dry Beans, Peas and Lentils for Use in Various Domestic Feeding Programs (1,000 pounds)

CLASS	FY11	FY10	FY09	FY08	FY07	FY06
BABY LIMA	945	350	490	210	70	70
BLACKEYE	4,716	5,565	7,273	4,650	2,664	3,369
BLACK	878	352	105	140	70	315
GARBANZO	1,260	700	805	735	980	280
GREAT NORTHERN	315	70	105	0	70	35
CANNED PEAS	11,684	13,344	20,614	22,068	13,133	12,150
FROZEN PEAS	6,653	4,000	4,039	3,960	5,504	2,178
RED KIDNEY	5,348	6,596	8,090	5,774	2,260	948
PINK	1,190	630	1,365	2,135	2,694	210
PINTO	6,373	5,846	8,753	6,998	7,803	3,884
REFRIED BEAN	6,783	9,064	8,231	7,328	8,495	6,279
SMALL RED	1,960	1,435	1,890	2,414	2,659	1,120
VEGETARIAN BEAN	13,760	14,784	14,005	13,025	11,314	8,800
TOTAL	61,865	62,736	75,765	69,437	57,716	39,638

USDA Purchases of Dry Edible Beans, Peas and Lentils for Use in Various Domestic Feeding Programs (1,000 pounds)

CLASS	FY11	FY10	FY09	FY08	FY07	FY06
BABY LIMA	1,049	968	1,452	766	847	3,185
BLACKEYE	0	1,129	2,016	1,452	403	524
GREAT NORTHERN	3,911	3,548	53,727	4,918	2,258	8,583
GARBANZO	0	40	0	0	0	0
SPLIT PEAS	0	0	0	0	0	1,650
LENTIL	1,532	1,169	0	0	0	0
PEA BEAN	0	0	40	40	0	1,247
PINK	0	0	0	0	0	887
PINTO	14,310	14,631	18,623	24,309	11,527	19,862
RED KIDNEY	1,895	2,379	1,855	0	887	7,096
SMALL RED	0	0	0	0	0	0
SMALL WHITE	0	0	0	0	0	0
TOTAL	22,697	23,864	77,713	31,485	15,922	43,034

WORLD PULSE (Not Elsewhere Specified) PRODUCTION (1,000 Metric Tons)*

COUNTRY	2010	2009	2008	2007	2006
WORLD	3369	3497	3297	3202	3119
AFRICA	1012	941	987	987	883
Benin	43	39	48	48	10
Botswana	2	3	2	5	7
Burkina Faso	21	16	20	26	24
Cameroon	3	3	3	3	2
Cape Verde	3	3	3	4	4
Central African Rep	31	31	29	28	27
Chad	49	45	46	46	45
Comoros	17	17	16	16	15
Congo DR	11	10	10	10	10
Cote d'Ivoire	13	12	12	11	11
Egypt	8	8	8	8	7
Ethiopia	69	69	46	45	40
Eritrea	24	24	22	22	25
Gambia	3	3	3	3	4
Ghana	23	22	22	22	19
Guinea	56	50	63	62	61
Guinea-Bissau	2	2	2	2	2
Kenya	11	11	10	16	15
Liberia	4	3	4	4	3
Madagascar	11	11	10	10	10
Mauritania	20	19	20	20	17
Morocco	16	12	24	18	19
Mozambique	158	155	151	165	150
Namibia	19	19	18	18	17
Niger	16	16	15	15	13
Nigeria	47	43	53	53	51
Sierra Leone	80	75	77	76	66
Sudan	91	68	99	83	80
Swaziland	1	1	1	1	1
Tanzania	102	96	95	100	80
Tunisia	19	15	23	17	19
Togo	7	8	5	5	3
Zambia	27	26	24	24	23
Zimbabwe	4	4	4	3	4
AMERICAS	30	31	31	30	29
Barbados	1	1	1	1	1
Guatemala	22	23	23	21	21
Mexico					1
Panama	3	3	4	4	4
Peru	5	5	2	2	2
OCEANIA	12	9	9	8	7
New Zealand	4	1	2		
Papua New Guinea	3	3	3	3	3
Solomon Islands	3	4	4	4	4

COUNTRY	2010	2009	2008	2007	2006
ASIA	1471	1460	1410	1426	1477
Afghanistan	46	43	43	40	42
Azerbaijan	1	1	1	1	
Bangladesh	82	76	72	83	107
Bhutan	1	1	1	2	1
China	108	104	128	110	110
India	700	70	670	700	759
Indonesia	1	1	1	1	1
Iran	53	33	36	54	44
Korea	8	8	7	6	7
Kyrgyzstan	1	2	3	1	1
Lao, PDR	15	15	16	14	13
Mongolia	1	1	2	1	1
Nepal	26	25	25	25	25
Pakistan	101	158	102	121	121
Philippines	32	32	30	28	28
Saudi Arabia	13	8	11	9	9
Syria	12	7	11	8	6
Tajikistan	43	35	24	16	11
Thailand	51	44	47	42	42
Turkey	7	10	21	22	20
Uzbekistan	14	15	11	10	8
Vietnam	145	127	136	121	108
Yemen	10	10	11	11	10
EUROPE	844	950	903	759	768
Albania	1	1	1	1	1
Austria	4	4	3	4	5
Bulgaria	2				
Czech Rep	8	8	6	9	16
Denmark	6	4	3	6	6
France	13	10	9	10	9
Germany	9	8	11	5	8
Greece	1	2	2	3	3
Lithuania	13	18	20	18	10
Poland	205	226	237	174	150
Romania	1	1			
Russian Federation	57	45	99	51	32
Slovakia	3	2	3	1	4
Spain	21	17	11	14	16
Ukraine	11	16	9	8	6
United Kingdom	493	588	488	455	500

Source: FAO United Nations, ProdSTAT Database, 2011

WORLD DRY BEAN PRODUCTION (1,000 Metric Tons)*

COUNTRY	2010	2009	2008	2007	2006
WORLD	23229	20691	21245	21180	20750
AFRICA	4020	4010	3615	3665	3554
Angola	250	247	124	104	85
Benin	163	116	144	131	80
Burundi	202	203	190	205	209
Cameroon	285	271	271	259	248
Chad	73	80	63	65	90
Congo, DR	115	112	113	112	111
Cote d'Ivoire	34	33	33	26	25
Egypt	53	66	96	61	54
Ethiopia	263	285	241	223	138
Kenya	391	465	265	430	532
Madagascar	82	82	81	80	79
Malawi	152	165	125	129	117
Niger	13	13	13	11	10
Rwanda	327	327	308	329	283
Somalia	19	20	17	18	19
South Africa	52	67	59	40	67
Sudan	16	12	17	16	16
Tanzania	950	949	900	872	850
Togo	76	72	67	63	53
Uganda	460	452	440	435	424
Zimbabwe	22	33	27	30	21
AMERICAS	7497	7447	7487	7061	7682
Argentina	338	313	337	328	323
Belize	5	5	4	5	4
Bolivia	52	54	36	39	36
Brazil	3523	3523	3461	3169	3458
Canada	254	223	266	277	372
Chile	24	28	20	19	50
Colombia	149	154	161	156	137
Costa Rica	13	9	8	8	11
Cuba	80	111	97	97	71
Dominican Rep	33	31	21	29	30
Ecuador	15	11	15	12	18
El Salvador	88	80	95	71	91
Guatemala	182	189	188	190	140
Haiti	62	78	65	70	40
Honduras	69	71	67	68	61
Mexico	1156	1041	1123	994	1386
Nicaragua	138	213	177	170	180
Panama	3	3	4	4	5
Paraguay	49	43	45	70	70
Peru	93	98	86	82	83
USA	1442	1150	1159	1161	1096
Uruguay	3	4	4	3	3
Venezuela	48	50	48	37	19

COUNTRY	2010	2009	2008	2007	2006
ASIA	11244	8648	9699	10086	9080
Armenia	4	6	6	5	4
Azerbaijan	10	11	11	10	9
Bangladesh	53	49	40	41	37
Cambodia	71	45	39	54	60
China	1540	1489	1708	1532	1559
Georgia	6	10	12	11	8
India	4870	2430	3010	3930	3270
Indonesia	292	314	298	322	316
Iran	194	181	183	223	208
Iraq	3	3	3	4	7
Japan	77	69	94	88	83
Kazakhstan	1	1	1	1	1
Korea DPR	224	216	250	225	228
Korea Rep	6	7	8	8	6
Kyrgyzstan	71	68	67	71	56
Myanmar	3030	3000	3218	2814	2502
Nepal	27	26	28	29	29
Pakistan	88	129	171	195	154
Philippines	27	28	30	29	26
Sri Lanka	12	9	9	9	8
Thailand	117	103	110	113	112
Turkey	213	181	155	154	196
Viet Nam	231	210	224	197	177
EUROPE	425	446	398	339	398
Albania	24	23	22	21	24
Belarus	150	174	133	86	83
Bosnia Herzegovina	13	15	13	10	14
Bulgaria	1	2	2	7	5
Croatia	2	2	3	3	4
France	6	5	6	7	8
Greece	14	13	13	18	20
Hungary	1	1	2	1	2
Ireland	14	14	8	9	15
Italy	13	12	12	12	13
Lithuania	5	5	4	3	3
Moldova	13	10	16	5	27
Netherlands	5	3	2	4	2
Poland	33	29	30	39	28
Portugal	4	3	3	4	4
Romania	21	22	25	18	35
Russia	6	7	6	10	11
Serbia	43	46	42	31	44
Spain	15	13	10	11	14
Sweden	1	1	1	1	1
Ukraine	29	31	32	31	32
Yugoslavia	7	11	9	7	7
OCEANIA	44	51	45	29	36
Australia	44	51	45	29	36

Source: FAO United Nations, ProdSTAT Database, 2011

WORLD GARBANZO (CHICK-PEA) PRODUCTION (1,000 Metric Tons)*

COUNTRY	2010	2009	2008	2007	2006
WORLD	10943	10455	8598	9748	8459
AFRICA	516	506	449	416	399
Algeria	21	18	11	14	13
Egypt	8	6	8	10	13
Eritrea	7	7	3	4	5
Ethiopia	310	312	288	254	211
Malawi	48	52	38	40	35
Morocco	57	52	38	33	66
Sudan	13	11	17	12	12
Tanzania	37	36	34	31	31
Tunisia	11	8	11	13	9
Uganda	5	4	4	4	4
AMERICAS	359	284	293	453	410
Argentina	5	4	5	5	5
Bolivia	1	1	1	1	1
Canada	128	76	67	225	163
Chile	3	2	3	3	3
Mexico	132	132	165	148	163
Peru	3	3	2	3	5
USA	88	65	51	69	70
EUROPE	78	94	71	63	55
Bosnia Herzegovina	4	4	4	4	4
Bulgaria	5	5	2	0	0
Greece	3	3	3	3	3
Italy	9	8	6	6	6
Moldova	2	1	1	1	4
Portugal	1	1	1	1	1
Russia	28	50	31	15	15
Spain	25	21	21	30	20
Yugoslavia	1	1	1	1	1

COUNTRY	2010	2009	2008	2007	2006
ASIA	9388	9126	7343	8504	7362
Bangladesh	6	7	7	10	10
China	9	8	10	7	7
India	7480	7060	5749	6334	5575
Iran	240	209	113	329	325
Iraq	1	1	2	5	15
Israel	8	9	11	12	12
Jordan	4	1	1	1	2
Kazakhstan	13	9	10	4	3
Lebanon	2	2	1	1	1
Myanmar	402	398	348	330	260
Nepal	7	7	7	8	8
Palestine/Gaza	2	2	2	2	2
Pakistan	562	741	475	438	480
Syria	68	57	27	50	52
Turkey	531	563	518	505	552
Uzbekistan	4	4	3	4	3
Yemen	52	51	58	63	54
OCEANIA	602	445	443	313	232
Australia	605	445	443	313	232

Source: FAO United Nations, ProdSTAT Database, 2011

WORLD DRY PEA PRODUCTION (1,000 Metric Tons)*

COUNTRY	2010	2009	2008	2007	2006
WORLD	10202	10501	10034	9362	9813
AFRICA	459	468	417	389	380
Algeria	6	6	4	6	5
Burundi	32	37	31	33	33
Congo	6	6	6	5	6
Congo, DR	1	1	1	1	1
Eritrea	2	2	1	1	1
Ethiopia	232	236	232	210	182
Lesotho	1	1	1	1	2
Libyan	6	5	5	5	5
Madagascar	21	21	19	18	18
Malawi	6	7	5	5	15
Mauritania	10	12	11	10	9
Morocco	26	28	16	12	24
Niger	1	1	1	1	1
Rwanda	38	34	22	20	18
Sierra Leone	3	3	2	2	2
South Africa	1	1	1	1	1
Tanzania	39	38	35	32	31
Tunisia	13	12	10	10	9
Uganda	17	17	16	16	16
AMERICAS	3692	4337	4305	3841	3284
Argentina	52	48	51	50	55
Belize	4	4	3	2	2
Bolivia	6	6	6	6	5
Brazil	7	7	5	4	4
Canada	2862	3379	3571	2935	2520
Chile	3	3	2	2	2
Columbia	50	50	54	46	38
Ecuador	1	1	1	1	2
Guyana	1	1	1	0	0
Jamaica	1	1	1	1	1
Mexico	2	2	2	4	4
Paraguay	5	4	3	4	4
Peru	51	50	47	43	45
USA	645	777	557	739	599
Uruguay	3	3	3	3	3
Venezuela	1	1	1	0	0
ASIA	1926	1953	2065	2161	1917
Azerbaijan	9	9	11	8	8
Bangladesh	13	12	10	10	12
Bhutan	1	1	2	2	3
China	991	960	1100	1080	1013
India	700	750	750	850	710
Japan	1	1	1	1	1
Kazakhstan	55	58	35	49	32

COUNTRY	2010	2009	2008	2007	2006
Kyrgyzstan	1	1	1	2	1
Lebanon	2	3	2	2	2
Myanmar	63	62	60	56	45
Pakistan	54	60	64	71	52
Syria	7	7	6	6	10
Tajikistan	6	5	4	5	4
Turkey	3	4	4	4	4
Turkmenistan	15	15	11	11	14
Uzbekistan	2	2	2	1	1
Yemen	3	3	3	3	2
EUROPE	3808	3366	2989	2682	4060
Austria	33	35	45	57	90
Belarus	36	49	39	30	47
Belgium	5	5	4	3	3
Bosnia Herzegovina	4	3	4	5	6
Bulgaria	4	2	4	3	1
Croatia	0	1	1	1	1
Czech Rep	48	52	41	55	72
Denmark	28	19	11	14	26
Estonia	12	7	3	9	5
Finland	13	11	7	11	9
France	110	547	451	594	1016
Germany	177	166	141	177	288
Greece	1	1	1	1	1
Hungary	37	33	46	51	49
Ireland	5	5	3	3	5
Italy	31	29	28	41	43
Latvia	3	3	1	1	1
Lithuania	40	50	29	24	16
Luxembourg	1	1	1	1	1
Yugoslavia	3	3	2	2	2
Moldova Rep	21	15	18	9	34
Netherlands	5	6	4	3	5
Poland	33	25	23	32	29
Romania	40	30	36	17	36
Russia	1218	1349	1257	863	1151
Serbia	37	39	42	35	37
Slovakia	15	12	14	19	23
Slovenia	1	1	4	5	10
Spain	194	160	138	160	190
Sweden	54	49	29	38	51
Switzerland	15	15	17	18	18
Ukraine	452	494	455	268	653
UK	147	151	91	130	145
OCEANIA	317	377	258	290	172
Australia	280	356	238	268	140
New Zealand	37	21	20	22	32

Source: FAO United Nations, ProdSTAT Database, 2011

WORLD LENTIL PRODUCTION (1,000 Metric Tons)*

COUNTRY	2010	2009	2008	2007	2006
WORLD	4641	3932	2827	3300	3338
AFRICA	164	157	111	97	99
Algeria	4	3	1	1	1
Egypt	2	1	1	2	1
Ethiopia	123	124	94	81	58
Kenya	1	1	1	1	1
Madagascar	1	1	1	1	1
Malawi	3	3	2	2	2
Morocco	28	23	9	9	34
Tunisia	2	0	1	1	1
AMERICAS	2354	1793	1171	919	857
Argentina	2	2	2	2	2
Canada	1947	1510	1043	734	693
Chile	1	1	1	1	1
Columbia	1	1	1	1	1
Ecuador	2	2	2	2	2
Martinique	1	1	1	1	1
Mexico	3	6	8	9	7
Peru	4	4	3	3	3
USA	393	266	109	166	147
ASIA	1935	1797	1446	2116	2299
Azerbaijan	1	1	2	2	2
Bangladesh	71	61	72	117	115
China	125	120	150	134	126
India	900	950	810	910	946
Iran	79	84	56	105	101
Iraq	3	2	2	3	17
Lebanon	1	1	1	1	1
Myanmar	1	1	1	1	1
Nepal	148	148	161	165	158
Pakistan	11	14	15	21	18
Syria	133	102	34	109	181
Turkey	447	302	131	535	623
Uzbekistan	1	1	1	1	1
Yemen	8	8	9	9	8
EUROPE	45	39	32	33	45
Bulgaria	3	2	1	2	2
France	16	13	8	10	1
Greece	3	3	3	3	2
Italy	1	1	1	1	1
Russia	5	7	6	3	11
Spain	15	13	13	14	12
OCEANIA	143	146	67	134	39
Australia	140	143	64	131	36
New Zealand	3	3	3	3	3

Source: FAO United Nations, ProdSTAT Database, 2011

WORLD LUPINE PRODUCTION (1,000 Metric Tons)*

COUNTRY	2010	2009	2008	2007	2006
World	934	919	1001	966	801
Africa	19	24	21	16	24
Egypt	3	3	2	3	3
Morocco	7	0	0	0	0
South Africa	16	21	18	13	14
Americas	52	24	42	62	80
Chile	40	12	32	51	70
Ecuador	2	1	2	2	1
Peru	10	10	9	8	8
Asia	1	1	1	1	1
Lebanon	1	1	1	1	1
Europe	234	257	231	226	226
Austria	1	1	1	1	2
Belarus	39	74	81	47	54
France	16	8	7	11	17
Germany	65	60	50	65	85
Greece	0	1	1	0	0
Hungary	0	1	0	0	1
Italy	6	5	5	5	6
Lithuania	6	11	7	8	5
Poland	26	57	40	56	28
Russia	10	9	22	17	12
Slovakia	2	0	0	0	0
Spain	4	5	4	6	7
Ukraine	60	27	14	8	7
Oceania	629	614	708	662	470
Australia	629	614	708	662	470

EUROPEAN CROP PRODUCTION

Broad and Field Beans

(Data in 1,000 Tons, Calendar Year)

COUNTRY	Area in Production 1,000 ha				Harvested Production 1,000 t				Yield 100kg/ha			
	2011	2010	2009	2008	2011	2010	2009	2008	2011	2010	2009	2008
Albania				15.0				25.0				16.6
Austria	6.0	4.2	2.8	3.7	16.7	10.1	6.7	8.1	27.7	24.3	23.9	22.0
Belgium		0.8	0.5	0.4			3.5	1.8		43.5	63.4	46.0
Bosnia-Herzegovina			9.5	9.4			14.9	12.9			15.7	13.8
Bulgaria		2.4	1.7	2.1			1.6	3.3		14.8	10.2	11.9
Croatia		1.3	1.9	2.1			0.0	3.3		12.9	12.6	15.2
Cyprus	0.5	0.5	0.5	0.8	0.7	0.9	0.8	0.7	13.6	17.2	15.2	9.6
Czech Republic	1.7	2.1	1.9	0.9	2.2	2.6	2.6	1.3	12.9	12.2	13.7	14.5
Denmark		1.1	0.0	0.0			0.0	0.0				
Estonia	0.0	0.4	0.1	0.1		0.5	0.1	0.1				0.0
Finland	9.7	9.4	2.3	0.7				0.0		0.0	0.0	0.0
France		152.5	90.5	63.0		443.9	443.6	320.6		29.1	49.0	50.9
Germany		16.9	12.0	11.1		56.2	47.5	38.4		33.3	39.6	34.6
Greece	0.0	0.0	0.8	0.8			12.8	12.8			16.0	16.0
Hungary	0.7	0.6	0.6	0.9			1.1	2.1			17.1	23.4
Italy			56.1	60.3			97.8	118.1			17.4	19.6
Latvia			1.2	0.8			2.4	1.7			20.0	21.3
Lithuania	4.1	3.0	2.1	2.6	6.1	4.5	5.1	4.3	14.9	15.0	24.3	16.5
Luxembourg		0.1	0.1	0.1			0.3	0.1		35.2	35.2	28.2
Netherlands		0.6	2.0	1.5			6.3	3.9			32.0	26.0
Poland		26.8	20.6	20.9		53.4	44.0	43.1		19.9	21.3	20.6
Portugal		3.5	3.6	6.3			2.0	3.2		5.7	5.6	5.1
Romania	16.2	24.9	30.0	36.2	21.5	20.9	22.3	25.2	13.2	8.4	7.5	7.0
Slovakia	0.3	0.3	0.2	0.2			0.2	0.2			9.6	10.6
Slovenia							0.7	0.4				
Spain			26.2	28.4			41.0	38.5				
Sweden		13.7	8.5	6.8						0.0	0.0	0.0
Switzerland				0.2				0.7				29.1
Turkey		0.0	0.0	0.0			165.0	155.0		0.0	0.0	0.0
United Kingdom			186.0	118.3		580.0	688.2				37.0	
Yugoslavia			14.0	13.6				12.8				9.4
Total	39.2	265.1	475.7	407.2	47.2	1180.4	1613.5	837.6	Avg 16.5	Avg 16.0	Avg 19.5	Avg 16.7

Source: Eurostat Database (See Copyright Information)

Blank Space indicates data is not available

Note: 2011 entries are provisional values

EUROPEAN CROP PRODUCTION

Peas

(Data in 1,000 Tons, Calendar Year)

COUNTRY	Area in Production 1,000 ha				Harvested Production 1,000 t				Yield 100kg/ha			
	2011	2010	2009	2008	2011	2010	2009	2008	2011	2010	2009	2008
Austria	11.7	13.6	15.2	22.3	36.3	32.8	34.7	45.4	31.0	24.2	22.9	20.3
Belgium		1.1	1.0	0.8		4.6	5.4	3.5		41.8	53.0	44.1
Bosnia-Herzegovina			1.4	1.6			3.2	4.0			22.5	24.5
Bulgaria		2.0	3.1	3.7		3.6	9.7	6.5		18.2	30.9	17.6
Croatia		0.8	1.0	0.7		1.5	2.4	2.0		19.3	23.6	28.0
Cyprus	0.1	0.1	0.1	0.0	0.2	0.1	0.1	0.1	27.4	25.5	18.3	51.7
Czech Republic	17.2	24.4	21.1	17.4	48.9	48.2	51.9	40.9	28.4	19.8	24.5	23.5
Denmark		8.5	6.8	4.4			22.4	14.0			32.9	31.8
Estonia	9.3	6.9	4.8	4.7		12.1	7.5	3.2		17.5	15.5	6.8
Finland	4.8	6.1	4.2	3.3	12.0	12.0	11.2	7.2	25.0	19.7	26.5	21.8
France		250.0	113.7	100.2		547.9	543.0	446.9		21.9	47.8	44.6
Germany		58.7	48.3	48.0		176.7	165.9	140.6		30.1	34.3	29.3
Greece			3.8	4.4			5.5	6.1			14.3	13.9
Hungary	19.0	17.8	19.1	20.7		40.2	32.5	46.0		22.5	17.1	22.2
Italy			10.8	10.4			28.7	26.8			26.7	25.8
Latvia			1.3	0.7			2.6	1.1			20.0	15.7
Lithuania	27.0	28.8	25.2	15.3	48.6	49.0	50.3	29.1	18.0	17.0	20.0	19.0
Luxembourg		0.2	0.2	0.2		0.9	0.9	1.0		41.9	41.9	59.9
Netherlands		0.9	1.2	0.9		4.5	5.6	4.2		48.0	46.0	45.6
Poland		19.6	14.5	13.8		43.0	37.2	29.0		21.9	22.6	21.0
Romania	25.5	23.6	22.7	18.0	43.8	36.9	30.0	36.9	17.2	15.7	13.2	20.6
Slovakia	6.3	9.8	7.5	7.1	14.6	15.0	11.7	13.6	23.1	15.3	15.6	19.2
Slovenia						1.4	1.4	3.8				
Spain			185.1	122.6			169.4	158.1			9.1	12.9
Sweden		22.6	16.3	10.7		54.0	48.9	29.1		23.9	30.0	27.2
Switzerland				4.3				16.2				37.8
Turkey				1.0			4.0	4.0				40.0
United Kingdom			42.0	30.1		147.0	151.2	91.0			36.0	30.3
Yugoslavia			1.1	1.0				2.4				25.4
Total	120.9	495.5	571.5	468.3	204.4	1231.4	1437.3	1212.7	Avg 24.3	Avg 18.5	Avg 21.5	Avg 23.0

Source: Eurostat Database (See Copyright Information)

Blank Space indicates data is not available

Note: 2011 entries are provisional values

EUROPEAN CROP PRODUCTION - Kidney Beans

(Data in 1,000 Tons, Calendar Year)

COUNTRY	Area in Production 1,000 ha				Harvested Production 1,000 t				Yield 100kg/ha			
	2011	2010	2009	2008	2011	2010	2009	2008	2011	2010	2009	2008
Albania				15.0				25.0				16.6
Belgium		0.2	0.1	0.1		0.9	0.7	0.3		38.1	49.3	33.0
Bulgaria		0.0		2.1		0.0		2.4				11.4
Czech Republic		2.1				2.6				12.2		
Croatia		1.3	1.9	2.1		1.6	2.5	3.3		12.9	12.6	15.2
Cyprus	0.2	0.2	0.3	0.2	0.2	0.2	0.2	0.1	7.6	8.7	7.4	5.6
France		2.2	2.5	2.3		5.5	6.3	5.9		25.2	25.5	25.6
Greece			6.5	6.5			10.3	10.3			15.9	15.9
Hungary			0.5	0.7			0.9	1.6			17.4	24.9
Italy			6.4	6.0			12.8	11.6			20.0	19.4
Latvia			1.1	0.8			2.4	1.7			21.8	21.3
Netherlands			0.0	0.9				2.2				24.1
Poland		17.7	14.3	15.1		33.2	28.5	29.8		18.8	20.0	19.8
Portugal		3.5	3.6	6.3		2.0	2.0	3.2		5.7	5.6	5.1
Slovenia			0.0	0.0				0.4				14.1
Spain			8.0	7.2			13.2	11.0			16.5	15.4
Sweden		0.7	0.5	0.5		0.0						
Turkey				0.3				3.0				10.0
									Avg	Avg	Avg	Avg
Total	0.2	28.4	46.2	66.6	0.2	46.0	79.8	111.8	7.6	17.4	19.3	17.3

EUROPEAN CROP PRODUCTION - Sweet Lupines

(Data in 1,000 Tons, Calendar Year)

COUNTRY	Area in Production 1,000 ha				Harvested Production 1,000 t				Yield 100kg/ha			
	2011	2010	2009	2008	2011	2010	2009	2008	2011	2010	2009	2008
Austria		0.2	0.2	0.2		0.4	0.6	0.5		22.7	30.0	30.1
Bulgaria		0.0				2.3				32.4		
Denmark						2.6	2.2		0.0			
France		6.6	3.2	2.7		8.3	8.2	6.8		12.7	25.9	25.3
Germany		24.1	19.4	19.9		30.6				12.7		
Greece		0.2	0.3	0.3		0.4	0.7	0.7		23.3	20.3	20.3
Hungary		0.3	0.4	0.3		0.4	0.6	0.4		12.2	14.4	14.0
Lithuania		9.1	10.4	7.5		5.8	10.6	7.3		6.4	10.2	9.7
Poland		19.5	35.7	30.7		25.9	57.0	39.7		13.3	16.0	12.9
Romania		0.1	0.0	0.0		0.1				0.9		
Slovakia		0.0	0.0	0.1		0.0	0.0	0.0		3.2		6.6
Spain		6.0	6.8	5.1		3.7	4.5	3.9		6.2	6.8	7.7
Switzerland				0.1				0.2				29.2
									Avg	Avg	Avg	Avg
Total	0.0	66.1	76.4	66.9	0.0	80.5	84.4	59.5	0.0	13.3	17.7	17.3

Source: Eurostat Database (See Copyright Information)

Blank Space indicates data is not available

Note: 2011 entries are provisional values

EUROPEAN CROP PRODUCTION Other Dried Pulses

(Data in 1,000 Tons, Calendar Year)

COUNTRY	Area in Production 1,000 ha				Harvested Production 1,000 t				Yield 100kg/ha			
	2011	2010	2009	2008	2011	2010	2009	2008	2011	2009	2008	2007
Austria	5.0	4.1	3.6	2.7	11.7		7.4	5.6	23.5		20.6	20.6
Belgium		0.1	0.1	0.2		0.0						
Bosnia-Herzegovina			0.3	0.3			0.7	1.0		9.8	8.6	11.5
Bulgaria		3.8	2.3	1.5		3.7	2.0	1.5		0.0	8.6	11.5
Croatia		0.0	0.0	0.0		0.0	0.1	0.0		18.1	18.0	10.0
Cyprus	0.1	0.1	0.1	0.2	0.1	0.1	0.1	0.1	11.6	10.7	9.0	4.2
Czech Republic	6.1	6.9	7.9	4.0	8.5	9.9	10.2	5.7	13.9	14.3	13.0	14.2
Denmark		0.8	0.0	0.0		0.0		0.0				
Estonia	0.0	0.0				11.4	7.5	3.2				
Finland	0.0		0.1	0.0	0.0			0.0				
France		18.0	12.0	9.5		21.4	20.1	14.7		11.9	16.8	15.5
Germany			22.7	25.2								
Greece			8.6	8.6			11.2	11.2			13.0	13.0
Hungary	1.6	1.5	0.8	0.4			1.2	0.5			15.6	13.9
Italy			7.8	7.1			9.2	7.6			11.7	10.7
Latvia			0.0	0.1			0.0	0.1				10.0
Lithuania	17.3	24.0	20.4	18.8	24.2	30.5	30.3	28.9	14.0	12.7	14.9	15.4
Luxembourg		0.0	0.0	0.0		0.1	0.1	0.0		30.9	30.9	27.0
Netherlands		2.0	0.0	0.0		0.0	0.0					
Poland		73.9	88.4	80.4		171.3	200.4	163.4		23.2	22.7	20.3
Portugal		10.0	10.0	12.2		0.0	0.0	0.0				
Romania	0.7	0.7	0.7	0.6		0.6	0.6	0.4		8.3	7.8	6.9
Slovakia	6.4	3.3	2.9	2.4			3.0	4.0	8.7		10.6	16.6
Slovenia							0.0	0.0				
Spain			99.1	58.4			75.4	53.4			7.5	9.1
Switzerland				0.1				0.2				29.2
Turkey		0.0	1010.0	716.0			1010.0	716.0				
Yugoslavia			0.1	0.1				0.1				8.9
Total	37.2	149.2	1297.9	948.8	44.5	249.0	1389.5	1017.6	Avg 14.3	Avg 9.3	Avg 10.9	Avg 11.2

Source: Eurostat Database (See Copyright Information)

Blank Space indicates data is not available

Note: 2011 entries are provisional values

EUROPEAN CROP PRODUCTION

Lentils

(Data in 1,000 Tons, Calendar Year)

COUNTRY	Area in Production 1,000 ha				Harvested Production 1,000 t				Yield 1,000 t			
	2011	2010	2009	2008	2011	2010	2009	2008	2011	2010	2009	2008
Bulgaria		0.0	2.0	1.1		0.0	1.6	1.1				10.0
Cyprus	0.0	0.0	0.1	0.1	0.0	0.0	0.0	0.0	1.3	2.1	1.3	0.8
France		11.4	8.8	6.8		13.0	11.9	7.9		11.4	13.5	11.6
Greece			2.1	2.1			2.8	2.8			13.3	13.3
Hungary			0.0	0.0			0.0	0.0			48.0	15.8
Italy			1.9	1.8			1.4	1.3			7.6	7.4
Slovakia		0.8	0.3	0.3			0.3	0.2			9.4	8.6
Spain			23.1	16.9			11.9	12.5			5.2	7.4
Turkey				319.0		0.0	375.0	131.0				4.1
Romania		0.0	0.2	0.0		0.0						
Yugoslavia			0.1	0.1				0.1				8.9
									Avg	Avg	Avg	Avg
Total	0.0	12.3	38.7	348.3	0.0	13.0	404.9	156.9	1.3	6.8	14.0	8.8

Source: Eurostat Database (See Copyright Information)

Blank Space indicates data is not available

Note: 2011 entries are provisional values

Canadian Pulses Supply and Disposition

Commodity/ Crop Year	Area Harvested	Yield	Production	Imports	Total Supply	Exports	Domestic Use	Carry Out Stocks
	1000 ha	t/ha	1000 mt	1000 mt	1000 mt	1000 mt	1000 mt	1000 mt
Dry Peas								
2011-2012f	914	2.31	2116	40	2691	2100	391	200
2010-2011	1322	2.28	3018	33	3951	3012	404	535
2009-2010	1487	2.27	3379	55	3880	2178	802	900
Lentils								
2011-2012f	998	1.53	1532	15	2297	1200	247	850
2010-2011	1336	1.46	1947	29	2020	1105	165	750
2009-2010	963	1.57	1510	9	1551	1387	120	44
Dry Beans								
2011-2012f	66	2.18	145	55	230	190	30	10
2010-2011	127	2.00	254	55	314	240	44	30
2009-2010	114	1.96	224	55	287	256	26	5
Chickpeas								
2011-2012f	50	1.83	91	8	121	50	51	20
2010-2011	77	1.67	128	9	158	86	50	22
2009-2010	30	2.49	76	6	143	66	58	20

f-forecast

Source: Canada Pulse and Special Crops Outlook, 01/17/2012, Agriculture and Agri-Food Canada

Selected special crop data, Canada, by crop year					
	Average 2005/2006 to 2009/2010	Total		August to November	
		2009/2010	2010/2011 ^r	2010/2011 ^r	2011/2012 ^p
Dried beans					
Area harvested					
Thousands of hectares	147.4	114.3	127.2	127.2	66.4
Thousands of acres	364.1	282.6	314.6	314.6	164
Yield					
Kilograms per hectare	1,960.00	2,000.00	2,000.00	2,000.00	2,200.00
Hundredweight per acre	17.6	17.5	17.8	17.8	19.4
thousands of metric tonnes					
Production	289.3	223.8	253.7	253.7	144.6
Imports 1	49.5	55.1	64.4	28.4	23.6
Exports 1	294.3	255.8	237.5	87.6	67
	Average 2005/2006 to 2009/2010	Total		August to November	
		2009/2010	2010/2011 ^r	2010/2011 ^r	2011/2012 ^p
Dry peas					
Area harvested					
Thousands of hectares	1,401.90	1,487.20	1,388.90	1,388.90	914.2
Thousands of acres	3,464.20	3,675.00	3,432.00	3,432.00	2,259.00
Yield					
Kilograms per hectare	2,200.00	2,300.00	2,200.00	2,200.00	2,300.00
Bushels per acre	32.6	33.8	32.3	32.3	34.4
thousands of metric tonnes					
Production	3,079.80	3,379.40	3,018.20	3,018.20	2,115.60
Imports 1	48.6	55	32.9	16.8	2.1
Exports 1	2,348.30	2,177.80	3,012.10	1,151.00	1,024.30
Stocks on farm	242	630	245
In commercial positions	184	270	290
Ending stocks	426	900	535

Source: Cereals and Oilseeds Review, 22-007-x, dated January 2012, Statistics Canada

p - preliminary

r - revised

.. - not available for the referenced period

Selected special crop data, Canada, by crop year					
	Average 2005/2006 to 2009/2010	Total		August to November	
		2009/2010	2010/2011 ^r	2010/2011 ^r	2011/2012 ^p
Lentils					
Area harvested					
Thousands of hectares	715.9	963.2	1,335.50	1,335.50	998.4
Thousands of acres	1,769.00	2,380.00	3,300.00	3,300.00	2,467.00
Yield					
Kilograms per hectare	1,412.00	1,570.00	1,460.00	1,460.00	1,530.00
Pounds per acre	1,260.40	1,399.00	1,301.00	1,301.00	1,369.00
thousands of metric tonnes					
Production	835.3	1,510.20	1,947.10	1,947.10	1,531.90
Imports 1	9.1	8.7	28.5	14.4	3.9
Exports 1	938.7	1,386.80	1,104.80	403.4	484.9
Stocks on farms	140.2	26	655
In commercial positions	22	18	95
Ending stocks	162.2	44	750
	Average 2005/2006 to 2009/2010	Total		August to November	
		2009/2010	2010/2011 ^r	2010/2011 ^r	2011/2012 ^p
Chickpeas					
Area harvested					
Thousands of hectares	91.4	40.3	76.9	76.9	49.7
Thousands of acres	226	100	190	190	123
Yield					
Kilograms per hectare	1,490.00	1,870.00	1,670.00	1,670.00	1,830.00
Pounds per acre	1,328.60	1,667.00	1,489.00	1,489.00	1,627.00
thousands of metric tonnes					
Production	174	75.5	128.3	128.3	90.8
Imports 1	5.9	5.6	9.3	2.8	2.5
Exports 1	73.3	65.6	85.8	32.3	18
Stocks on farms	31.8	10	12
In commercial positions	8.4	10	10
Ending stocks	40.2	20	22

Source: Cereals and Oilseeds Review, 22-007-x, dated January 2012, Statistics Canada

p - preliminary

r - revised

.. - not available for the referenced period

Exports of Special Crops, by country of final destination, Canada

	Average 2005/2006 to 2009/2010	Total		August to November		November 2011 ^P
		2009/2010	2010/2011 ^r	2010/2011 ^r	2011/2012 ^P	
metric tonnes						
Dry peas						
Belgium	29,786	3,672	2,631	307	129	65
Germany	3,366	2,164	1,177	85	1,008	45
Italy	7,321	5,063	3,324	1,884	1,101	475
Netherlands	3,838	1,170	2,193	1,066	959	755
Portugal	1,109	828	229	111	46	25
Spain	206,855	8,424	95,287	3,620	6,823	2,304
United Kingdom	7,067	5,783	3,523	1,177	716	144
Western Europe total 1	299,977	28,750	109,003	8,411	11,180	3,845
Eastern Europe total 1	8,690	8,370	5,741	1,673	709	63
United Arab Emirates	45,379	13,487	45,285	13,424	3,957	438
Middle East total 1	88,750	49,225	81,121	22,131	7,903	1,553
Algeria	6,381	6,894	5,944	5,008	1,565	222
South Africa	17,324	16,023	9,562	1,641	999	125
Africa total 1	58,036	59,473	33,313	14,136	5,161	772
Bangladesh	266,408	308,638	236,318	124,364	66,831	0
People's Republic of China	300,396	417,798	514,676	141,908	310,163	68,936
India	1,009,743	1,085,218	1,708,418	683,080	510,317	74,072
Indonesia	12,118	22,121	5,451	1,393	21,740	291
Nepal	4,454	1,802	3,626	2,105	3,046	904
Pakistan	51,830	10,149	77,700	73,822	1,045	0
Philippines	12,643	15,174	14,459	3,041	6,882	2,540
Taiwan	11,751	12,496	11,832	4,302	3,755	892
Asia total 1	1,691,043	1,893,911	2,585,769	1,037,831	927,972	148,188
Oceania total 1	2,525	3,014	3,022	660	450	24
Colombia	29,566	21,180	23,271	10,175	11,428	3,900
Ecuador	4,107	3,001	2,992	672	489	75
Peru	12,304	9,222	12,144	4,152	4,937	1,318
Venezuela	14,112	18,842	19,632	8,763	3,592	1,278
South America total 1	78,522	72,706	75,881	31,297	23,475	7,243
Cuba	69,206	21,727	66,091	203,853	22,000	0
Mexico	9,227	8,606	8,916	3,296	2,261	675
Central America and Antilles t	86,940	38,233	83,203	27,483	26,879	1,411
United States	33,834	24,168	35,037	7,421	20,583	5,895
North America total 1	33,834	24,168	35,037	7,421	20,583	5,895
Dry pea exports total	2,348,317	2,177,850	3,012,089	1,151,042	1,024,311	168,994

Exports of Special Crops, by country of final destination, Canada

	Average 2005/2006 to 2009/2010	Total		August to November		November 2011 ^P
		2009/2010	2010/2011 ^r	2010/2011 ^r	2011/2012 ^P	
Chickpeas						
Italy	4,816	5,112	3,616	1,721	601	257
Spain	4,357	3,582	2,678	521	283	92
Western Europe total 1	18,113	14,781	11,877	4,027	2,227	992
Eastern Europe total 1	300	297	295	160	55	55
Egypt	1,916	3,114	6,201	2,647	154	0
Jordan	6,826	5,081	12,221	1,741	750	125
Middle East total 1	15,753	15,511	46,404	18,270	5,201	2,098
Africa total 1	2,947	3,459	2,746	1,384	200	150
India	8,239	7,518	2,822	1,343	3,510	212
Japan	197	232	138	42	0	0
Pakistan	13,106	10,416	7,419	1,677	1,948	1,338
Asia total 1	22,582	18,553	10,493	3,143	6,051	1,551
Oceania total 1	93	192	34	34	0	0
Colombia	3,376	1,080	1,549	798	268	88
South America total 1	4,533	1,285	2,411	1,098	357	88
Central America and Antilles total 1	2,019	2,233	2,149	574	805	422
United States	6,939	9,293	9,430	3,611	3,092	655
North America total 1	6,939	9,293	9,430	3,611	3,092	655
Chickpea exports total	73,279	65,603	85,839	32,301	17,986	6,011

Exports of Special Crops, by country of final destination, Canada

	Average 2005/2006 to 2009/2010	Total		August to November		November 2011 ^P
		2009/2010	2010/2011 ^r	2010/2011 ^r	2011/2012 ^P	
Lentils						
Belgium	9,082	5,400	3,934	1,311	1,466	648
France	9,750	10,668	6,684	1,809	1,686	484
Germany	13,511	15,557	11,652	4,438	3,066	927
Greece	9,863	7,557	8,578	5,132	5,757	1,933
Italy	23,921	25,327	18,921	10,381	1,262	3,952
Spain	26,725	24,862	28,866	9,264	16,164	4,931
United Kingdom	6,537	8,869	10,292	3,362	4,926	946
Western Europe total 1	106,595	103,843	97,622	38,970	46,942	14,456
Eastern Europe total 1	11,429	10,192	10,337	3,863	3,404	1,488
Egypt	47,494	61,729	70,382	26,632	38,384	16,158
Iran	7,576	3,782	4,770	952	2,927	642
Israel	5,455	5,849	5,938	1,912	2,585	1,086
Lebanon	6,817	8,535	4,105	1,002	2,062	647
Turkey	118,683	226,465	239,957	68,547	135,140	29,380
United Arab Emirates	63,557	95,819	69,115	29,283	50,581	16,511
Middle East total 1	262,964	420,726	407,745	133,568	235,972	66,162
Africa total 1	93,624	101,872	88,547	35,173	56,883	10,047
Bangladesh	60,230	129,459	34,231	19,826	5,878	555
India	115,250	283,995	135,103	58,686	23,607	5,500
Pakistan	39,512	41,718	56,743	23,743	19,568	5,458
Sri Lanka	36,341	74,342	52,799	18,821	5,862	1,096
Asia total 1	253,738	531,836	286,392	121,819	60,417	13,152
Oceania total 1	1,519	1,729	1,231	351	236	129
Brazil	12,210	13,743	12,535	5,946	5,393	172
Chile	17,806	18,487	14,230	3,509	1,384	331
Colombia	60,143	64,480	56,162	17,421	24,866	12,805
Ecuador	17,432	17,074	18,605	3,715	3,824	680
Peru	20,634	17,426	20,639	6,278	8,142	1,611
Venezuela	22,330	24,642	36,210	15,703	9,863	5,849
South America total 1	156,288	158,871	160,821	52,081	53,682	21,544
Mexico	31,379	37,115	31,613	11,162	16,753	7,673
Panama	7,044	7,191	5,304	1,809	2,596	1,155
Trinidad and Tobago	2,000	1,918	1,546	503	770	66
Central America and Antilles total 1	42,241	48,120	39,830	13,810	20,741	9,031
United States	10,380	9,582	12,243	3,727	6,588	2,046
Lentil exports total	938,779	1,386,771	1,104,768	403,362	484,864	138,055

Exports of Special Crops, by country of final destination, Canada

	Average 2005/2006 to 2009/2010	Total		August to November		November 2011 ^P
		2009/2010	2010/2011 ^r	2010/2011 ^r	2011/2012 ^P	
Dried beans						
Belgium	1,221	804	356	62	105	83
France	2,866	760	882	377	541	335
Germany	2,080	1,740	3,820	1,401	1,229	391
Greece	6,785	5,371	6,012	3,087	2,648	776
Italy	21,811	21,875	14,820	8,339	3,842	1,931
Netherlands	4,630	2,229	1,262	457	356	141
Portugal	5,721	4,302	4,250	2,420	99	19
Spain	3,957	2,754	3,208	1,648	705	262
United Kingdom	63,215	56,667	58,805	23,450	18,237	3,330
Western Europe total 1	114,947	98,868	95,270	41,770	28,364	7,377
Eastern Europe total 1	7,444	4,427	5,895	2,512	1,117	550
Middle East total 1	7,559	8,710	6,625	4,239	930	368
Angola	15,389	20,071	16,519	3,880	923	224
South Africa	690	0	335	335	0	0
Africa total 1	19,174	22,728	17,506	4,516	923	224
Japan	14,383	10,723	14,217	2,488	2,183	1,435
Asia total 1	21,154	15,561	22,136	4,480	3,555	1,675
New Zealand	3,639	5,826	4,013	1,934	548	0
Oceania total 1	8,082	11,120	8,242	2,535	1,740	868
South America total 1	4,836	2,920	5,343	2,434	223	123
Mexico	7,750	9,718	5,489	1,570	2,280	0
Central America and Antilles total 1	27,521	20,693	12,746	4,002	3,219	378
United States	83,624	70,746	63,707	21,086	26,975	7,464
North America total 1	83,624	70,746	63,707	21,086	26,975	7,464
Dried bean exports total	294,342	255,773	237,470	87,574	67,046	19,027

1. Exports to individual countries are included in the continental totals.

^P preliminary

^r revised

Source(s): Statistics Canada, International Trade Division.

Table 1-2

November 2011 estimates of production of principal field crops — Imperial, Canada

Commodity	Area		Yield on harvested area bushels per acre	Production bushels
	seeded thousands of acres	harvested		
Canada				
Dry peas	2,328.00	2,259.00	34.4	77,735
Dry white beans	55	55	18.5	1,015
Dry coloured beans	115	109	19.9	2,170
Lentils	2,570.00	2,467.00	1,369	3,377,250
Chick peas	125	123	1,627	200,150
Quebec				
	thousands of acres		hundredweight per acre	hundredweight
Total dry beans	11.1	10.6	14.5	154
Ontario				
	thousands of acres		hundredweight per acre	hundredweight
Dry white beans	35	35	20	700
Dry coloured beans	50	50	20	1,000
Manitoba				
	thousands of acres		hundredweight per acre	hundredweight
Dry peas	28	24	30.6	735
Dry white beans	20	20	15.8	315
Dry coloured beans	40	36	16.5	59
Saskatchewan				
	thousands of acres		hundredweight per acre	hundredweight
Dry peas	1,555.00	1,510.00	32.4	48,900
Lentils	2,460.00	2,360.00	1,359	3,207,650
Chick peas	105	103	1,610	165,800
Alberta				
	thousands of acres		bushels per acre	bushels
Dry peas	745	725	38.8	28,100
Dry coloured beans	25	23	25	575
Lentils	110	107	1,585	169,600
Chick peas	20	20	1,718	34,350
Western Canada				
	thousands of acres		bushels per acre	bushels
Dry peas	2,328.00	2,259.00	34.4	77,735

1. The seeded area remaining in June after winterkill.

Source: Field Crop Reporting Series 22-002-x, No. 8, Dated December 2011, Statistics Canada
2010 Bean Market Summary - USDA Market News - Page 51

Australian Crop Production

COMMODITY	Area Planted (1,000 Acres)					Yield (Pounds)					Production (1000 cwt)					
	Crop Year and 5 Year Average	2012	2011	2010	2009	5 Year	2012	2011	2010	2009	5 Year	2012	2011	2010	2009	5 Year
Lupins		1210.79	1934.79	1709.93	1425.77	1749.47	1317.22	973.66	1078.12	1101.33	1115.01	15949	18838	18435	15859	15702
Field Peas		602.92	721.53	704.24	741.30	768.48	1118.28	1347.36	1132.35	867.23	897.45	6742	9722	7974	5331	6429
Chickpeas		699.29	1349.17	1060.06	835.20	941.45	1262.07	629.25	1029.07	992.34	906.52	8826	8490	10909	9923	8288
Broad (Faba) Beans		373.12	358.30	318.76	308.88	355.82	1488.85	1794.28	1524.91	1283.63	1060.62	5555	6429	4861	3024	3965
Lentils		427.48	392.89	256.98	289.11	353.35	1315.23	1744.61	1246.46	1045.98	824.93	5622	6854	3203	1434	3024

Australian Crop Production by Province

PROVINCE	Lupins								Chickpeas							
	Harvested Acres (1,000)				Production (1,000MT)				Harvested Acres (1,000)				Production (1,000MT)			
Crop Year/5 Year Avg	2012	2011	2010	5 Year	2012	2011	2010	5 Year	2012	2011	2010	5 Year	2012	2011	2010	5 Year
New South Wales	168.03	331.11	252.04	214.98	91.00	269.00	84.00	87.00	385.48	827.79	622.69	580.69	181.00	201.00	304.00	232.00
Victoria	106.25	66.72	88.96	101.31	69.00	43.00	33.00	32.00	86.49	61.78	96.37	81.54	45.00	48.00	25.00	23.00
Queensland	0.00	0.00	0.00	0.00	0.00	0.00	0.00	0.00	180.38	415.13	308.88	249.57	138.00	112.00	146.00	105.00
Western Australia	825.31	1336.81	1235.50	1265.15	506.00	407.00	631.00	516.00	27.18	22.24	7.41	9.88	16.00	4.00	3.00	2.00
South Australia	160.62	158.14	130.96	165.56	84.00	96.00	74.00	65.00	22.24	24.71	24.71	17.30	13.00	16.00	9.00	8.00
TOTAL	1260.21	1892.79	1707.46	1747.00	750.00	815.00	822.00	700.00	701.76	1351.64	1060.06	938.98	393.00	381.00	487.00	370.00
PROVINCE	Broad (Faba) Beans								Lentils							
	Harvested Acres (1,000)				Production (1,000MT)				Harvested Acres (1,000)				Production (1,000MT)			
Crop Year/5 Year Avg	2012	2011	2010	5 Year	2012	2011	2010	5 Year	2012	2011	2010	5 Year	2012	2011	2010	5 Year
New South Wales	106.25	98.84	111.20	79.07	73.00	84.00	65.00	49.00	0.00	0.00	0.00	0.00	0.00	0.00	0.00	0.00
Victoria	121.08	111.20	54.36	98.84	73.00	82.00	35.00	36.00	190.27	185.33	128.49	192.74	98.00	132.00	50.00	55.00
Queensland	4.94	7.41	4.94	2.47	3.00	5.00	3.00	2.00	0.00	0.00	0.00	0.00	0.00	0.00	0.00	31.00
Western Australia	7.41	7.41	9.88	7.41	4.00	3.00	5.00	3.00	0.00	0.00	0.00	0.00	0.00	0.00	0.00	3.00
South Australia	135.91	135.91	140.85	165.56	95.00	113.00	110.00	86.00	234.75	205.09	128.49	160.62	152.00	174.00	93.00	80.00
TOTAL	375.59	360.77	321.23	353.35	248.00	287.00	218.00	176.00	425.01	390.42	256.98	353.35	250.00	306.00	143.00	169.00

Note: 2011 data is an ABARE estimate

Source: Australian Bureau of Agriculture and Resource Economics and Sciences, Australian Crop Report dtd 06 Dec 2011

Australian supply and disposal of pulses

COMMODITY	Production (1,000MT)					
	2006-07	2007-08	2008-09	2009-10	2010-11	2011-2012
Lupins	470	662	708	823	841	712
Field Peas	140	268	238	356	434	301
Chickpeas	229	313	443	487	379	394

COMMODITY	Apparent Domestic Use (1,000MT)					
	2006-07	2007-08	2008-09	2009-10	2010-11	2011-2012
Lupins	437.00	665.00	499.00	481.00	328	344
Field Peas	114.00	49.00	204.00	226.00	166	157
Chickpeas	20.00	22.00	28.00	34.00	20	23

COMMODITY	Exports (1,000MT)					
	2006-07	2007-08	2008-09	2009-10	2010-11	2011-2012
Lupins	93.00	77.00	304.00	353.00	290	350
Field Peas	138.00	141.00	137.00	162.00	303	250
Chickpeas	241.00	222.00	506.00	492.00	458	335

PROVINCE	Field Peas								
	Crop Year/5 Yr Avg	Harvested Acres (1,000)				Production (1,000MT)			
		2011	2011	2010	5 Year	2011	2011	2010	5 Year
New South Wales	101.31	140.85	113.67	108.72	59.00	76.00	33.00	28.00	
Victoria	93.90	111.20	128.49	165.56	40.00	76.00	75.00	49.00	
Western Australia	135.91	177.91	148.26	168.03	52.00	50.00	65.00	61.00	
South Australia	271.81	291.58	313.82	326.17	150.00	232.00	183.00	149.00	
TOTAL	602.92	721.53	704.24	768.48	301.00	434.00	356.00	287.00	

Note: 2012 data is an ABARE estimate

Source: Australian Bureau of Agriculture and Resource Economics and Sciences, Australian Crop Report dtd 06 Dec 2011

South African Dry Bean Production and Consumption

Production Year	Gross Value	Marketed by Producers	Consumption	Imports	Exports	Market Year
	R1,000		Tons			Jan-Dec
2009/10	367,439	47,710	132,960	85,250	3,035	2010
2008/09	513,019	63,510	156,643	93,133	1,676	2009
2007/08	473,947	54,100	126,090	60,992	5,880	2008
2006/07	269,435	35,290	129,953	84,113	1,712	2007
2005/06	324,729	61,500	122,226	64,400	1,865	2006

South African Dry Bean Production by Province

Province	1,000 Tons					
	2009/10	2008/09	2007/08	2006/07	2005/06	2004/05
Western Cape	0.30	0.28	0.25	0.34	0.45	0.60
Eastern Cape	0.48	0.30	0.00	0.00	0.00	0.30
Northern Cape	1.20	0.25	0.60	0.22	0.90	0.96
Free State	14.40	28.80	21.45	12.38	19.80	19.60
KwaZulu-Natal	4.50	4.80	5.95	3.00	0.90	1.80
Limpopo	9.35	6.75	6.80	4.90	0.60	0.56
Mpumalanga	12.08	15.75	15.00	13.30	27.50	33.60
Gauteng	4.55	5.10	5.08	3.40	6.30	5.25
Northwest	5.40	5.00	3.85	2.00	10.80	7.15
Total	52.26	67.03	58.98	39.54	67.25	69.82

South African Production and Producer Price

Year	Area Planted	Total Production	Producer Prices			
			R per ton			
	1,000 Acres	1,000 t	Large White Kidney	Small White Beans	Sugar (Lima) Beans	Haricot Beans NESOI
2009/10	108.72	57	R11,250	R5,950	R6,250	R4,500
2008/09	108.72	74	R7,400	R6,000	R6,000	R4,500
2007/08	108.72	65	R9,000	R5,800	R7,500	R6,500
2006/07	126.02	44	R9,500	R5,200	R6,500	R5,000
2005/06	135.91	74	R5,800	R4,200	R4,400	R3,200

Source: Directorate of Agriculture, Republic of South Africa, Abstract of Agricultural Statistics 2011

Brazil Dry Bean Estimated Production by Type 2010-2011

Class	Beans (shelled) 1st Harvest	Beans (shelled) 2nd Harvest	Beans (grain) 3rd Harvest	Beans (grain) Total Harvest
	kt	kt	kt	kt
Common Colored	971.0	714.6	615.4	2,301.0
Common Black	29.2	541.8	167.0	738.0
Black-eyed Pea (Cowpea)	16.4	182.4	500.0	698.8
Total	1,016.6	1,438.8	1,282.4	3,737.8

Brazil Dry Bean Production Yield 2010-2011

Year	Beans (shelled) 1st Harvested Production	Beans (shelled) 2nd Harvested Production	Beans (grain) 3rd Harvested Production	Beans (grain) Total Harvested Production
	kt	kt	kt	kt
2011	1,695.0	1,381.6	660.0	3,736.6
2010	1,556.2	1,192.9	473.8	3,222.9

Source: Brazil Ministry of Agriculture, Livestock, and Supply

Chile Dry Bean Area, Production, and Performance by Crop Year

Commodity	Area		Annual Change (%)	Production		Annual Change (%)	Yield	
	ha			100kg (qqm)			(qqm)100kg/ha	
	2009/10	2010/11	2008/9	2009/10	2008/9	2009/10		
Dry Beans	13,512	12,532	-7.82%	4,313	16,436	73.76%	5.10	13.10
Lentils	1,222	1,321	7.49%	263	972	72.94%	3.60	6.80
Chickpeas	1,885	1,981	4.85%	30	13	-130.77%	3.30	3.30
Dry peas	2,969	1,933	-53.59%	13,205	11,000	-20.05%	15.10	8.10

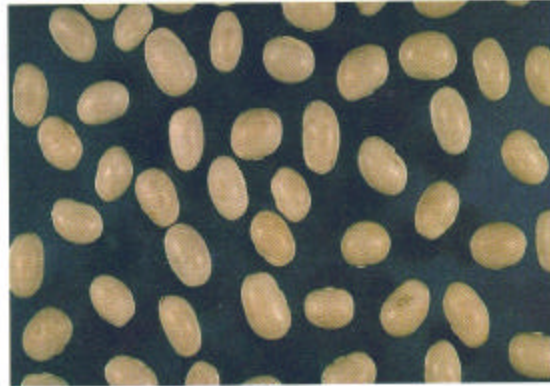
Source: INE, Agricultural Statistics 2010/11 Area is an estimate



Pinto



Great Northern



Navy



Black



Light Red Kidney



Anasazi

